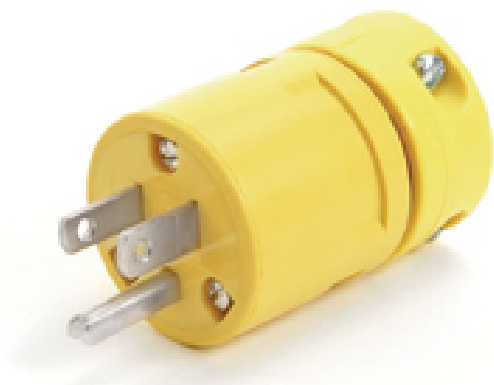




Part Number : 1301410015
Product Description : Super-Safeway Cordset
14 Gauge SJOW, 2 Pole/3 Wire, Cordset
Length 15.24m (50.0'), NEMA 5-15, 125V,
Inline GFCI
Series Number : 130143
Status : Active
Product Category : Wiring Devices
Engineering Number : 1447B143IN



Documents & Resources

Product Environment Compliance

Compliance

China RoHS	Not Reviewed
EU ELV	Not Reviewed
Low-Halogen Status	Not Reviewed
REACH SVHC	Not Reviewed
EU RoHS	Not Reviewed

Multiple Part Product Compliance Statements

- Eu RoHS
- REACH SVHC
- Low-Halogen

Multiple Part Industry Compliance Documents

- IPC 1752A Class C
- IPC 1752A Class D
- Molex Product Compliance Declaration
- IEC-62474
- chemSHERPA (xml)

EU RoHS Certificate of Compliance

Part Details

General

Status	Active
--------	--------

Category	Wiring Devices
Series	130143
Description	Super-Safeway Cordset 14 Gauge SJOW, 2 Pole/3 Wire, Cordset Length 15.24m (50.0'), NEMA 5-15, 125V, Inline GFCI
IP Rating	N/A
NEMA Configuration	NEMA 5-15
Product Family	Heavy-Duty Industrial Wiring Devices
Product Name	Super-Safeway
Specialty	N/A
Type	Cordset
UPC	78678870150

Agency

CSA	LR6837
UL	E38085

Electrical

Current - Maximum per Contact	15.0A
GFCI	Yes-In-line
Voltage - Maximum	125V

Physical

Cord Type	14/3 SJOW
Flange	No
Flip Lid	No
Gender	Male-Female
Length	15.24m (50.0')
Lighted Connector	No
Locking Blade	No
Poles	2-pole/3-wire
Receptacle Type	Single

This document was generated on Oct 11, 2023