



25 Years of

RACK-A-TIERS

2019/2020 CATALOG



Page	Description
55	6.5 Blank Plate
37	AC Sensor
38	Aerial Tool Bin
51	Aircraft Cable & Wire Crimps
14	Alignment Tool
17	All-American Pull Buddies
57	Allen Head Driver Bit Kit
43	Auger - Standard & Tri-Cut
43	Auger Bit File
16	Bag Pipers
36	Bat Flashlight
10	Bend-All
9	Big E-Z
33	Booty Pack
22	Breaker Lok
10	Bulldog Benders, The
43	Bumper Balls
31	Butt Pouches
8	Cable Caddy & Cable Truck
8	Cable Cart & Cable Cart Data
53	Cable Clear
49	Cable Mounts
7	Caddy Mac #1 & 2
40	Carbide Tipped Steel Cutters
45	Chip Catcher
30	Combo Tool Belt & Pouches
40	Co-Pilot
11	Copper Wire Strippers
39	Croc's Needle Nose Wire Strippers & Jr.
50	Crows Feet
45	Dirt Bag
44	Driller's Dust Bowl Original & Pro
44	Drywall Trapper
37	Dual Check Non-Contact Voltage Tester
11	Easy Stripper, The
54	Efergy Products
52	Elasco Products
41	Electrician's Kit Blades
15	ELS - Eye Lag Screw Tool
33	Exploding Garbage Can Classic & Ultra
15	Extendo Nut Driver
54	EZ Generator Switch
9	E-Z Roll & E-Z Roll Multi
25	Ferret Stick, The
24	Ferret, The
27	FFS - Fusion Fish Tape
26	Fiber Rodders & Fibersnakes
25	Fiberfish Attachments
36	Firefly
18	Fish Heads
18	Flex Flyers
16	Flex Puller
16	GD Center Finder
35	GPS LightLock
23	Ground Pounder, The
42	Guide Tool

Page	Description
40	Guide-O, The
49	H2 Homer Helper
36	Head Light
13	Heat Tank, The
58	Holdsabit
44	Hole-In-One - Hole Cutters
9	Hooker - Wrench Adaptor
12	Hoppy Bender, The
57	Impact Driver Socket Adaptor Set
60	Industrial Cord Connector
22	Jack Locks
42	Javelin
37	Jet Level
14	Jimbo, The
6	JK Stud Reels & Floor Units
31	Knee Pads
50	KO Killers
38	Ladder-Mate
28	Laser Plumb Bob
29	Laserline
17	LB Wire Guide
36	LED Safety Headband Light
50	Level Jacks
58	LockHard Bits
14	Locknut Wrench, The
48	Mag Daddy
29	Magnepull
28	Magnespot
59	Magnetic Bit Holder
59	Magnetizer / Demagnetizer
58	Malco Dual Sided Hex Driver
20	Mark My Wire
40	Multi-Bit Step Drills
51	Non-Metallic Cable Support System
47	Nut Blaster XL and XXL
43	OverDrive Bits
36	Owl Eye Flashlight
47	Panel Buddy Knockout Kit
22	Patch Locks
16	Penguin Puller Sr & Jr, The
21	Phase It Right
21	Phazer 3
59	Picquic Screwdrivers
34	Pipe Spinner
13	Pipe Vipers
42	Piranhabits - High Speed Steel
24	Plastic Coated Fiberfish
24	Plastic Coated Glowfish
23	Plate Vise
37	Plug Master
46	Plugfones
27	Polyester Fish Tape & Cases
59	ProGrabit
32	ProJob Pants & Shorts
60	ProLock
19	Puck, The

Page	Description
17	PulLee
41	Q-Bit Drywall Hole Cutter
42	Quattro Flex Auger Bits
2	Rack-A-Tiers
56-57	Racky Driver Bits
50	RAT500 & RAT750
8	Reel Mac & Spindles
3	Reel-End
58	Reemer Bit
59	Robertson Screwdrivers
59	Rolgear Screwdriver
19	Ropematic Pro
34	Rough-In Stick, The
40	Sharp Pog
51	Shim My Box
53	Sidewinders
36	Silver Bullet, The
23	Sluggo-Ox
31	Snap Sack
18	Snatch Strap
7	Spool Mac
9	Spool Mule
39	Staple Shark
38	Stay Pal
21	Steve's Sticky Tags
36	Stick Bug & Jr.
3	Stick, The
12	Stubbees
34	Stud Ball
50	Stud Buddies Connectors
30	Support Belt
31	Suspenders
42	Switch Bits
37	Swivy Level, The
25	Telescopic Rods
53	Temporary Cable Guard
5	Thomas Wheeler
49	Tie Lips
50	Tom Two-Way Connector
30	Tool Carriers
55	Top Hat Cover
35	Tracer Wizard
15	Trik - Threaded Rod Anchor Tool
22	Trunktie
4	Tug Wise Standard and Deluxe
46	Ugly's Electrical Reference Books
37	Ultimate AC Sensor
20	U-Phase Wire Marker
22	USB Locks
48	Van Magnets
39	V-Cutter
6	Wire Pod
4	Wire Spool Hand Cart
5	Wire Tub
17	Wire Vortex
3	X-Dispenser



MADE IN USA



MADE IN CANADA



FOLLOW US ON



WWW.RACK-A-TIERS.COM

SALES@RACK-A-TIERS.COM

TOLL FREE: 1 (800) 939-9999

CHECK OUT WHAT'S NEW

HEAT TANK

THE HEAT TANK IS A SIMPLE AND EFFECTIVE WAY TO BEND YOUR PVC PIPE. USING A STANDARD FORCED AIR HEAT GUN, MEANS NO EXPENSIVE BLANKET OR HEAT BOXES ARE REQUIRED. SIMPLY CONNECT YOUR HEAT GUN TO THE DESIGNATED SLOT, INSERT THE PORTION OF THE PIPE YOU WISH TO BEND AND YOU'RE SET!



PG. 13

CABLE CLEAR

CABLECLEAR IS A PATENTED NEW CABLE MANAGEMENT PRODUCT FOR WALL MOUNTED TV'S. ENABLES YOU TO QUICKLY AND EASILY HIDE EYESORE TV CABLES INSIDE THE STUD WALL WITHOUT ANY SPECIAL DIY SKILLS. ADD CABLES SEAMLESSLY AT ANY POINT AND TIME AFTER THE CABLECLEAR KIT IS INSTALLED.

CABLECLEAR CREATES A 50MM (2") CONDUIT INSIDE THE WALL CAVITY SO THAT YOU CAN FISH THE CABLE THROUGH AND HIDE THEM COMPLETELY.



MALCO BITS

QUICKLY CHANGE BETWEEN 1/4IN. AND 5/16IN. HEX SIZES WITH MALCO'S UNIQUE, EXCLUSIVE, DUAL-SIDED MAGNETIC HEX DRIVERS. THE REVERSIBLE HEX SOCKET FITS OVER A 1/4-INCH MAGNET-TIPPED, BALL LOCKING HEX SHAFT, AND CAN BE QUICKLY REVERSED TO CHANGE SIZES. ELIMINATE TROUBLESOME BUILDUP OF METAL SHAVINGS IN THE HEX TIP WITH THE "EASY CLEAN MAGNE



PG. 58

SHARP POG

OSCILLATING BLADE SHARPENER

QUICKLY & EFFECTIVELY SHARPENS OSCILLATING SAW BLADES WITH THE USE OF A HAND DRILL.



PG. 40

FERRET WIFI

VERSATILE INSPECTION TOOL

THE FERRET IS THE WORLD'S FIRST TRUE WIRELESS RECHARGEABLE INSPECTION CAMERA. THE FERRET LIVE STREAMS VIDEO FOOTAGE DIRECTLY TO YOUR SMARTPHONE.

SIX BRIGHT WHITE LED'S ALLOW YOU TO SEE INTO ANY AREA THAT THE FERRET WILL FIT IN. THE FERRET CAN BE THREADED ON ANY FISH STICK GIVING YOU INCREASED VERSATILITY AND MOBILITY



PG. 24

PROJOB PANTS

NOW AVAILABLE FROM RACK-A-TIERS, PROJOB PANTS! BE EFFICIENT. BE COMFORTABLE. THE HEAVY-DUTY WORK PANTS INCLUDE TWO HOLSTER POCKETS THAT CAN BE TUCKED INTO THE SIDE POCKETS, ONE WITH AN EXTRA POCKET AND ONE WITH TOOL LOOPS.



PG. 32

The Invention That Started It All:



RACK-A-TIERS

ALL-IN-ONE MULTI-USE WIRE DISPENSER

The Rack-A-Tiers Wire Dispenser is the one tool that DOES IT ALL. It's no surprise that we've sold hundreds of thousands of them to electricians everywhere. This genius invention is most commonly used for dispensing wire from spools of various sizes. See for yourself its many other uses!



See it In Action!



Part# 11455

INTERLOCKING PAIRS! VERSATILE! WATERPROOF!



RUSTPROOF! RELIABLE! RUGGED! EASY TO SET UP!

"We saw another contractor with these and we loved them. You can have multiple spools mounted at a time with various sizes. We have used it for CCTV Siamese cable, speaker cable and alarm cable. They do not take up much room, lightweight and durable."

★★★★★

- Fred

"Simple but effective. It's funny how this simple plastic mold is so useful. It's great. On the package it even mentions other uses I never considered!"

★★★★★

- Lamont

"These were purchased to use for overhead crane service. They have exceeded our expectations"

★★★★★

- Mike

"Where has this been all my life?"

★★★★★

- Noyotas

"Smart design. It's strong, easy to carry, easy to use and very versatile for a reasonable price"

★★★★★

Badbedbug74

"Can fit many application needs like fiber optics cable transfer from one reel to another."

★★★★★

- Frank

"What a great help the cable organizer is. Made my job faster and neater. Thanks again"

★★★★★

- E.D

The X-Dispenser

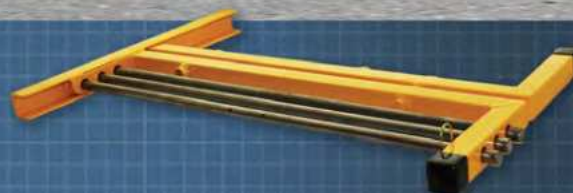
FOLDING WIRE CADDY



FEATURES:

- Folds to 1" wide to easily fit in your van
- Easy to carry: 1" x 23"
- Holds up to six reels of wire

Maximum spool quantity: 6 reels
500' of #10 AWG wire
Maximum spool diameter: 8"
Max spool width: 9"



Part# 11655

THE STICK

STUD MOUNTED WIRE DISPENSER

The Stick installs quickly & easily to any standard stud. Its compact design allows for easy storage once the job is complete.

FEATURES:

Weight capacity: 200 lbs
Maximum 15" reel width

Part# 11555



REEL-END

REUSABLE SPOOL REEL TOOL

FEATURES:

- Pays for itself with the first roll saved and it's reusable
- Organize your wire spools with the reel-end wire spool repair kit
- The Reel-End repairs common plastic spools #10 through #18 gauge.
- 6 1/2" Diameter

Part# 17455





THREE EASY STEPS! 1. SCREW TO BASE OF REEL 2. FLIP OVER REEL 3. PULL WIRE!

TUG WISE

STANDARD MODEL (15" x 15")

- 4 screw holes for easy attachment
 - Works with wooden and plastic reels
 - Standard model can handle up to 1000 lbs
- Part# 11931

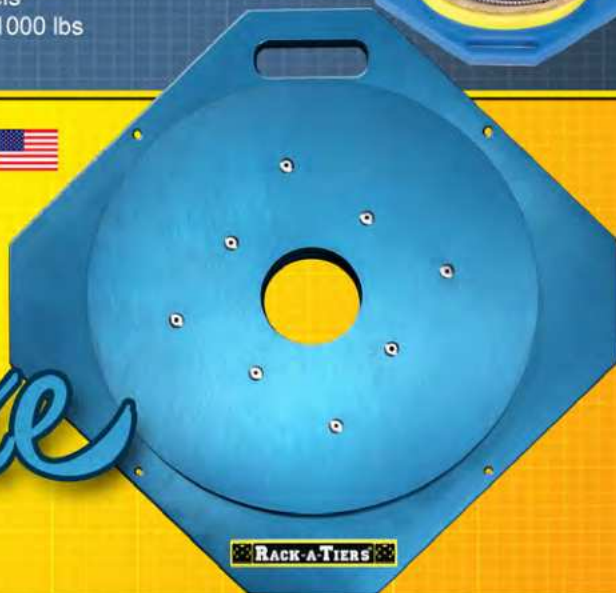


TUG WISE

Deluxe

DELUXE MODEL (21.5" x 21.5")

- 4 screw holes for easy attachment
 - Works with wooden and plastic reels
 - Can handle up to 2000 lbs
 - Made of 3/8" thick aluminum alloy and built to handle anything
- Part# 11932

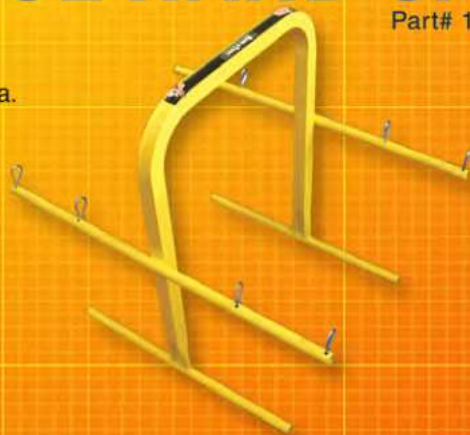


WIRE SPOOL HAND CART

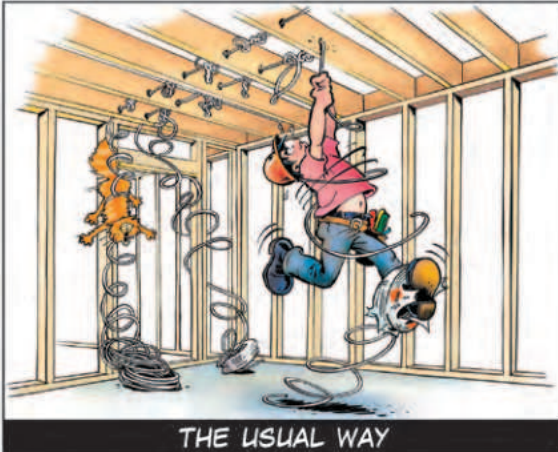
Part# 11700

Finish: Yellow powder coated
Dispenses (8) 5" Wide Reels Or
(4) 6 to 10" Wide Reels, Up to 7" Dia.
80 LB capacity

- Height 20"
- Width 15"
- Length 26"
- Number of Spindles 4
- Material: Steel
- 5.2 lbs. / 2.35 kg.



THOMAS WHEELER



THE USUAL WAY

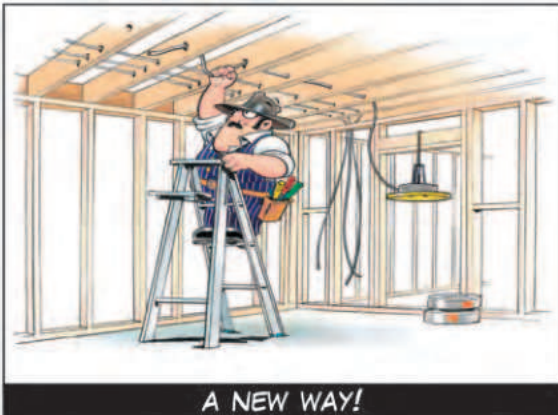
This easy-to-hang wire dispenser allows for fast, twist-free NMSC, MC cable or Flex pulling.

FEATURES:

- No maintenance required
- Affordable
- Dependable
- Saves time
- Eliminates waste
- Collapsible
- Holds up to 150 lbs

MFG NOTE

Most coil dispensers are too big, cumbersome and expensive. Not this one. The Thomas Wheeler knocks down and sets up in seconds, hangs on a 2x4, in trusses, above tee bars, or on a ladder. Light, simple, rugged, and it really works.



A NEW WAY!

Part# 19455



WIRE TUB



Part# 18455

The Wire Tub allows you to easily dispense and rewind wire. Don't waste a single foot of wire - rewind it in the Wire Tub and get ready for installation!

FEATURES:

- 360 degree feed adjusts automatically for easy dispensing
- 3-way adjustable center hub
- Removable top plate has a handle for rewinding wire!
- Large 24" diameter capacity



FOLLOW US ON



WWW.RACK-A-TIERS.COM

SALES@RACK-A-TIERS.COM

TOLL FREE: 1 (888) 939-9991

FOLDABLE STUD REELS

BENEFITS:

- 21" diameter shock absorbing wire tray
- Capacity: 100 lbs
- Grease retaining spindle gives trouble-free service eliminating maintenance over long periods
- Spindle spring adjusts to desirable free spool
- Designed for 14-2, 14-3, 12-2, 12-3 wire and MC wire
- Rotational wire guide allows pulling in any direction
- Raised edges on wire trays prevent wire spill
- Eliminates twisting and kinking of wire
- Constructed of high grade steel, zinc, and aluminum

19FSR24 - Foldable Stud Reel for 2"x4"

19FSR26 - Foldable Stud Reel for 2"x6"

19FSRC - Foldable Stud Reel for 2"x4" and 2"x6"



Combination STUD REEL & FLOOR REEL

BENEFITS:

- Optional 20" or 25.5" shock absorbing wire tray
- Capacity: 100 lbs
- Grease retaining spindle gives trouble-free service eliminating maintenance over long periods
- Spindle spring adjusts to desirable free spool
- Designed for 14-2, 14-3, 12-2, 12-3 wire and MC wire
- Rotational wire guide allows pulling in any direction
- Raised edges on wire trays prevent wire spill
- Eliminates twisting and kinking of wire
- Constructed of high grade steel, zinc, and aluminum
- Combo unit allows mounting on 2x4 and 2x6
- No open walls? No problem! Use it as a floor reel
- Its quick assembly and disassembly give you more time to focus on the job



19CFS20 - 20" Combination Stud Reel
19CFS25 - 25.5" Combination Stud Reel

Heavy Duty STUD REEL



BENEFITS:

- 24" diameter wire tray
- Capacity: 150 lbs
- Grease retaining spindle gives trouble-free service eliminating maintenance over long periods
- Spindle spring adjusts to desirable free spool
- Wire guide also serves as a carrying handle
- Designed for 14-2, 14-3, 12-2, 12-3, 10-2, 10-3 and MC wire
- Rotational wire guide allows pulling in any direction
- Raised edges on wire trays prevent wire spill
- Eliminates twisting and kinking of wire
- Constructed of high grade steel, zinc, and aluminum
- (Some assembly required)

19HDS24 - 24" Heavy Duty Stud Reel

Heavy Duty FLOOR REEL



BENEFITS:

- 24" diameter wire tray
- Capacity: 150 lbs
- Greased retaining spindle gives trouble-free service eliminating maintenance over long periods
- Spring adjusts to desirable free spool
- Wire guide also serves as a carrying handle
- Designed for 14-2, 14-3, 12-2, 12-3, 10-2, 10-3 and MC wire
- Rotational wire guide allows pulling in any direction
- Raised edges on wire trays prevent wire spill
- Eliminates twisting and kinking of wire
- Constructed of high grade steel, zinc, and aluminum

19HDFR - Heavy Duty Floor Reel

WIREFPOD



The Wire-Pod is a compact, portable dispenser designed specifically for coils. This handy device will work with NMSC, AC, and Flex coils. With its light-weight design it can easily be stored in any tool bag or work vehicle when not in use.

FEATURES:

- Opens for use and folds away for easy storage
- Weighs less than 3 lbs
- Compatible with NMSC, AC and Flex
- Made in USA



Part# 19955

CADDY MAC 2

Part# 11902



Caddy Mac #2 holds 16 spools of #10 awg or 24 spools of #12 awg. Hinge design allows easy access to all spools for wire dispensing and folds for compact storage.

Spindles swing out to set position for convenient loading of wire spools.

Inner spindles store in special loops which can hold four pieces and will not fall out during transportation.



Number of Spools	Max Spool Dia	Load Capacity	Weight	Width	Additional Features
16-#10 awg. or 24-#12 awg.	7.5 in 19 cm	400 lbs 180 kg.	72 lb. 33 kg.	26 in 66 cm	Folds up for compact storage.

SPOOL MAC

Part# 11900

*Ships via freight

FEATURES:

- All steel frame construction
- 10" wheels
- Easy set-up for cable dispensing
- No loose pieces
- Compact storage
- Fits through 32" (81 cm) doorways
- 350 lb (160 kg) load capacity
- Priced right – built to last



Max Reel Width	Max Spool Dia	Reel Capacity	Weight	Width	Additional Features
25 in 63.5 cm	40 in 101 cm	350 lbs 160 kg	76 lb. 35 kg.	31.5 in 80 cm	All steel frame, easy set-up for cable dispensing. Compact storage. Ship weight: 150 lbs



CADDY MAC 1

Part# 11901

- Caddy Mac #1 transports spools on spindles and works as a dolly! Wire is dispensed while laying flat.
- 1/2" solid spindles are attached to cart, no loose pieces. Spindles lock in place, even during transportation.
- Spindles swing out to set position for convenient loading of wire spools.

Number of Spools	Max Spool Dia	Load Capacity	Weight	Width	Additional Features
8-#10 awg. or 12-#12 awg.	7.5 in 19 cm	200 lbs 90 kg	72 lb. 33 kg.	26 in 66 cm	Transports spools on spindles and works as a dolly. Wire is dispensed while laying flat.

NEED NEW SOLAR PANELS?
CHECK THE BACK PAGE TO
FIND OUR NEW PRODUCT
SEARCHING SERVICE!



REEL MAC THE REAL JACK



REEL MAC 60

Screw type telescoping reel jack for 26 to 56" diameter reels.

REEL MAC 70

Screw type telescoping reel jack for 46 to 96" diameter reels.

REEL MAC 80

Heavy duty ratchet drive reel jack for reels up to 90" in diameter. Convenient, detachable ratchet handle stores in base when not in use.

Mfg. Note: Reel Macs sold as singles, buy 2 for a set.



Reel Mac 60
Part# 11860



Reel Mac 70
Part# 11870

Reel Mac 80
Part# 11880

REEL MAC SPINDLES

Used with Reel Mac reel jacks. (Sold separately)



REEL MAC & JACK-A-TIER				
Description	Part #	Reel Diameter	Capacity	Weight
Reel Mac #60	11860	26-56"	2500lb	27lbs
Reel Mac #70	11870	46-96"	2500lb	46lbs
Reel Mac #80	11880	up to 90"	3750lb	99lbs

Corresponding SPINDLES				
Description	Part #	Dimensions	Capacity	Weight
#61	11861	2 3/8" x 62"	5000lb	39lbs
#71	11871	2 3/8" x 76"	5000lb	47lbs
#81	11881	3 1/2" x 100"	7500lb	119lbs



Part# CC1200 - Cable Caddy

CABLE TRUCK & CABLE CADDY

- Constructed of rugged 1" steel tubing.
- Both are 43" tall with 7" rubber wheels.
- Both can accommodate spools up to 16" wide on solid steel 1/2" axles.
- Cable Caddy features 6 axle positions for unlimited versatility.
- Cable Truck has 4 axle positions and a solid steel plate for transporting material.



Part# CT1100 - Cable Truck

CABLE CARTS

- Comes with interchangeable 1" and 3/4" axles.
- Holds up to 30 spools of THHN.

- Vertical racks swing forward for easy loading
- Space for plywood work table on top

Dimensions: 40W x 48L x 48H / Shipping weight: 185 lbs

Part# CC2000 - Cable Cart



FOLLOW US ON    

WWW.RACK-A-TIERS.COM

SALES@RACK-A-TIERS.COM

TOLL FREE: 1 (888) 939-9991

EZ ROLL

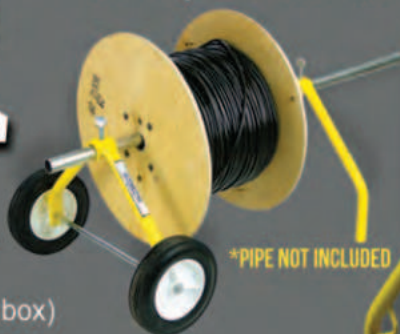


The E-Z Roll Wire Rack is the ultra compact and collapsible wheeled wire dispenser. When you're ready to pull wire, wheel the E-Z Roll into position and dispense wire directly from your pipe bender or 1" EMT.

FEATURES:

- 150 lbs load tested
- Rigid steel construction
- Light-weight design
- Compact (fits in any job box)
- Holds reels up to 24"
- Replacement wheels available

Part# 55455



EZ Roll MULTI

GET THE MOST OUT OF YOUR EZ-ROLL WIRE RACK WITH THE NEW EZ-ROLL MULTI. THIS HANDY ADD-ON EXTENDS THE EZ-ROLL'S USE BY ALLOWING MORE WIRE SPOOLS TO BE ADDED, GIVING IT EVEN MORE FUNCTIONALITY & CAPACITY.



Part# 55456

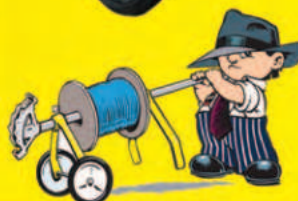
BIG EZ

FEATURES:

- 300 lbs load tested
- Rigid steel construction
- Light-weight design
- Compact (fits in any job box)
- Holds up to 32"



The Big E-Z utilizes the same design and great features as the original EZ Roll while allowing you to dispense larger wire spools.



*PIPE NOT INCLUDED
Part# 55632

SPOOL MULE

Part # 40500

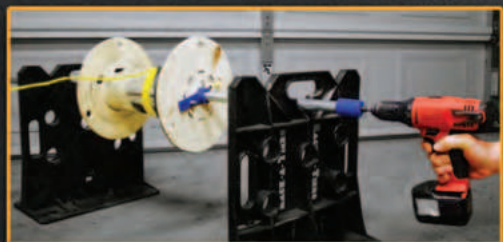
The Spool Mule is a simple, yet effective tool for re-spooling wire, rope, and a variety of other cables. Using only a drill, a 3/4" conduit and the Spool Mule kit you can easily roll up coils of wire or transfer cable from broken spools to an intact empty spool.

KIT INCLUDES:

3/4" conduit to drill attachment, and (2) Spool Mule brackets

FEATURES:

Works with the majority of spool sizes
3/4" conduit and Rack-A-Tiers not included



Hooker



PIPE WRENCH ADAPTER

The Hooker Pipe Wrench Adaptor lets you turn your Rack-A-Tiers Wire Dispensers into a pipe vise.

FEATURES

- Light weight
- Easy to use
- Fast implementation
- Inexpensive
- To be used with an 18" rigid pipe wrench

Part# 10455



WIRE BENDING MADE EASY



The Bulldog Bender is designed and manufactured by an electrician for electricians. Used for bending wire in panels, disconnects, LBs & wireways. The Bulldog Bender will prove to be a valuable tool to add to your arsenal. As with any specialty tool, with practice you will learn how to use the Bender to its full bending potential.

Part# 78600

Part# 78500

Part# 78501

Part# 78502

Part# 78400

NEW! BULLDOG PUP SERIES! 4/0 and under

Hourglass Dowels (smooth)
Part# 78050 – Up to 500MCM
Part# 78060 – Up to 750MCM

PART #	DESCRIPTION	SIZE
78500	BULLDOG ORIGINAL	UP TO 500 MCM
78501	BULLDOG PRO WITH ADAPTOR	UP TO 500 MCM
78502	BULLDOG 3-PIECE SET (ORIGINAL + PRO)	UP TO 500 MCM
78600	BULLDOG BIG DADDY 3-PIECE SET	UP TO 750 MCM
78400	BULLDOG PUP	UP TO 4/0
78402	BULLDOG "PUP PRO" 2 PCS SET	UP TO 4/0
78403	BULLDOG "PUP" 3 PIECE SET	UP TO 4/0

ALL BULLDOGS SHIPPED WITH KNURLED DOWELS EXCEPT THE "PUP" SERIES. SMOOTH DOWELS AVAILABLE.



Bend-All

SAVE YOUR KNUCKLES BY USING OUR BEND-ALL CABLE BENDER! MADE WITH MACHINED AIRCRAFT ALUMINUM, THIS CABLE BENDER IS EXTREMELY STRONG AND DURABLE. IT CONNECTS TO YOUR STANDARD 1/2" RATCHET, MAKING CABLE BENDING A BREEZE FOR YOU.



BENDS UP TO 500 MCM



Part# 77455

COPPER WIRE STRIPPERS

RECOVER COPPER & ALUMINUM WIRE QUICKLY AND EASILY WITH THESE MONEY MAKING MACHINES!

COPPER WIRE STRIPPER 2

The top selling CWS-2 model weighs in at only 45lbs. This wire stripper is compact enough to easily move around, but still has the ability to strip a wide range of wire.



FEATURES:

- Strips from 14 AWG to 750 MCM (1.45" diameter)
- Strips NMSC cable 10-14 AWG
- 1/2 HP Motor
- All aluminum frame
- Hardened one piece blade
- Strips solid core or braided wire
- Blade made from tool steel
- Blade easily re-sharpened
- Fully adjustable wire guide

Part# 47200

COPPER WIRE STRIPPER 1

The CWS-1 is the largest wire stripper available from Rack-A-Tiers. Powered by a 1 HP motor and with the ability to strip up to 3" in diameter, there isn't much this wire stripper can't handle.



FEATURES:

- Strips 14 AWG to up to 3" in diameter
- Strips NMSC cable 10-14 AWG
- 1 HP motor
- All aluminum frame
- Hardened one piece blade
- Strips solid core or braided wire
- Blade made from tool steel
- Blade easily re-sharpened
- Fully adjustable wire guide
- Bench model - anti-slip base
- Made in Canada

Part# 47100

Part# 47030

COPPER WIRE STRIPPER JR.

A low cost alternative to the CWS-2, the Copper Wire Stripper Jr. is the money making tool that you need in your warehouse. Driven by a standard power drill, you'll get more than double the money from your scrap wire. It's that simple!

FEATURES:

- Wire Range: 14 AWG - 4/0
- Strips NMSC cable 10-14 AWG
- All aluminum frame
- Single pass cuts outer jacket & one inner wire
- Hardened one piece blade
- Strips solid core or braided wire
- Blade made from tool steel
- Blade easily re-sharpened
- Fully adjustable wire guide



CWS JR.
SINGLE PASS CUTS
OUTER JACKET AND
1 INNER WIRE



EASY STRIPPER

Strip the cover off your scrap wire in minutes with the Easy Stripper! Increase your earnings on every single job you complete.

FEATURES:

- Less than 10% the price of a standard motorized wire stripper
- Strips 12 to 4/0 wire
- Powered by any normal power drill
- Way easier and faster than using your knife!
- Environmentally friendly - no burning required
- For Light Use Only

Part# 47020



REPLACEMENT PARTS

CWS-1

Replacement Blade - Part# 47100B
Red Feed Guide - Part# 47100G
Replacement Pulling Wheels - Part# 47100W

CWS-2

Replacement Blade - Part# 47200B
Red Feed Guide - Part# 47200G
Replacement Pulling Wheels - Part# 47200W

EASY STRIPPER

Replacement Blade 2nd Edition - Part# 47020B2

CWS JR.

Replacement Blade - Part# 47030B
Red Feed Guide - Part# 47030G
Replacement Pulling Wheels - Part# 47030W
Replacement Shaft - Part# 47030S



EASY AS 1,2,3!



STEP ONE

STEP TWO

STEP THREE

Get Bent



FEATURES:

- Part#

57005 - Replacement Thumb Screw

57077 - 3/4" Replacement Swing-Stop

Stubbees



NEED A BIGGER STUBBEE? CONTACT OUR SALES TEAM!

BEND THIS

MAKE THIS

**CREATE SHORT, RIGID BENDS
EASILY IN MECHANICAL BENDERS
WITH OUR STUBBIES!**

3/4" Stubbee - Part# 59275

PIPE VIPER

COLD BEND RIGID PVC
PIPE WITHOUT PIPE
COLLAPSE OR FRACTURE! 



HOW?

Simply insert the spring into the pipe & bend across your knee!

- **No Heat Guns**
- **No Heat Blankets**
- **Fewer PVC Fittings**

MFG Note:

Needs to be at least 50 degrees Fahrenheit to work effectively

PART#

- 58050 - 1/2" PVC Spring Bender
- 58075 - 3/4" PVC Spring Bender
- 58100 - 1" PVC Spring Bender
- 58125 - 1 1/4" PVC Spring Bender
- 58150 - 1 1/2" PVC Spring Bender
- 58200 - 2" PVC Spring Bender
- 58250 - 2 1/2" PVC Spring Bender
- 58300 - 3" PVC Spring Bender
- 58350 - 3 1/2" PVC Spring Bender
- 58400 - 4" PVC Spring Bender



The HEAT TANK

Features:

- Prevent overheating and burning with the temperature gauge and timer
- Saves time with hands free heating
- Eliminates the need to buy prefab 90's and couplings



The Heat Tank is a simple and effective way to bend your PVC pipe. Using a standard forced air heat gun, means no expensive blanket or heat boxes are required. Simply connect your heat gun to the designated slot, insert the portion of the pipe you wish to bend and you're set!

Part# 59500

New Product!



WILL HOLD UP TO 1 1/2" PVC CONDUIT.



THE JIMBO

WIRE PULL BRACKET

A LITTLE BRACKET THAT MAKES A BIG DIFFERENCE!



FEATURES:

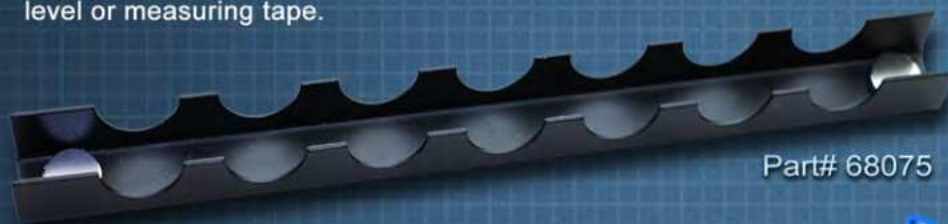
- Set up multiple brackets making a temporary cable raceway to avoid snags or catching
- Pull hard around corners and through structural steel
- Consolidate cables to the best angle for ease of pulling

Part# 40200



ALIGNMENT TOOL

Utilizing rare earth magnets, the alignment tool easily snaps into place and allows you to align all your 3/4" conduit without the need for a level or measuring tape.



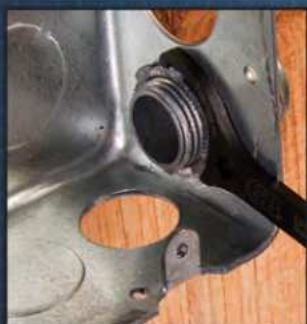
Part# 68075

BEFORE

AFTER



THE LOCKNUT WRENCH



How many locknuts have you bashed with your flat blade screw driver? The Locknut Wrench allows you to tighten locknuts quickly and works great in tight spaces. The patent pending design is available in 3 sizes.

- Offset ends allow access in tight locations. Handle cut away sections are engineered to exact lock nut engagement and rotation
- Singular handle prevents wrist tension
- Clear permanent laser etched markings to ease use
- Comprised of durable steel and strong enough for any job

Available Sizes:

Part# 79050 - 1/2"

Part# 79075 - 3/4"

Part# 79100 - 1"

Part# 79150 - 2 Piece Locknut Wrench Kit (Includes 1/2" & 3/4")

Part# 79200 - 3 Piece Locknut Wrench Kit



EXTENDO NUT DRIVER



Part# NT1050

SEE IT IN ACTION



The Extendo Nut Driver kit is designed to adapt a standard 1/2" conduit into an extension nut driver for threaded rod. Utilizing the concept of a hollow shank nut driver, the Extendo Nut Driver gives you the flexibility to cut the conduit any length you need to drive the nut up the full length of threaded rod. With this tool on hand, you no longer need to buy multiple size hollow shank nut drivers! Save yourself time and money with this complete extension nut driver kit.

- Kit includes: 7/16", 9/16" sockets, and 1/4" adaptor
- No need to buy multiple hollow shank nut drivers
- Drill attachment designed for 3/8" chuck, will fit quick change drills

- Made from hardened steel
- Adaptable to any length nut driver needed
- Extends up to 10'



7/16" nut driver for 1/4" rod
9/16" nut driver for 3/8" rod

Part# NT1258

TRIK

THREADED ROD ANCHOR INSTALLATION TOOL



FEATURES:

- Made in USA
- All pieces fit in a compact portable case.
- 5/8" or 1/2" anchors can be installed using the same tool, just flip the head over.
- Work from the ground, no need for ladders, hoists or lifts.
- Patented design.

The TRIK allows you to install threaded rod anchors from the ground utilizing only a piece of 1/2" EMT. This unique design can be used to install 5/8" and 1/2" wood or steel anchors. Simply flip the adapter over for the size you need.



ELS

EYE LAG SCREW INSTALLATION KIT

Part# 72050



The ELS allows you to easily install any eye lag screw from the ground. Its patented, unique design can be used in wood or steel applications. All you need is a 1/2" EMT conduit and a power drill. Safely install ceiling grid wires or aircraft cable and the anchors at the same time.



IT'S SIMPLE... FOAM LINE CARRIERS ARE EXPENSIVE

BAG PIPERS

ARE CHEAPER AND WORK MUCH BETTER

3 sizes available to fit conduit 1/2" up to 6"



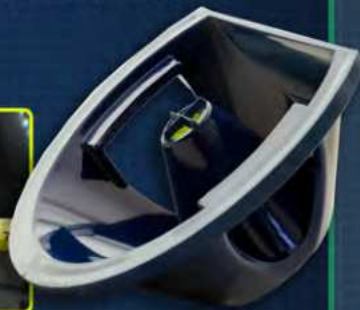
Part#

BP05.125 (sm) 1/2" x 1 1/4" - 10 pack
BP150.40 (med) 1 1/2" x 4" - 5 pack
BP20.60 (lg) 2" x 6" - 3 pack
BP05.600 (multi-pack) 1/2" x 6" - 6 pack

GD CENTER FINDER



The GD Center Finder is a new product that revolutionizes the installation of electrical panels and junction boxes. No need to learn a new installation process. Pull your layout just as you always have, but this time aided with the GD Center Finder. Your center point will always be level and clearly identified. The days of "close enough" are over. Finally a center tool that works!



Part# 67500

THE PENGUIN PULLER



The Penguin Puller Sr. and Penguin Puller Jr. are revolutionary new tools designed to aid in easily pulling large cables. The sleek, bullet shape allows for seamless pulling, no tape or crimps required. Utilizing four slots and allen-key set screws, the Penguin Puller Sr. and Penguin Puller Jr. are rated for 4000 lbs. of pull strength. These tools are the cool new kids on the block and here to stay when it comes to pulling wire!

Part#

69700 - Penguin Puller Sr. For Pipe 2 1/2" and Larger
69705 - Penguin Puller Jr. For Pipe 2" and Larger

Features:

- 4000 LBS. MAX PULL STRENGTH
- Penguin Puller Sr. - 3/0 to 350 MCM Copper or Aluminum
- Penguin Puller Jr. - 2/0 to 4/0 Copper or Aluminum
- No tape, no crimps, no mess
- Reusable

FLEX PULLER



2 Pack
Part# 42620

- Flexible metal conduit pulling tool easily screws onto exterior of MC cable & provides a hook to pull cable.
- No more getting caught up in insulation or other obstacles!
- Can be used on #14, #12, & #10 MC Cable!
- Provides a hook to pull cable through hollow & insulated walls and ceilings.



THE ALL AMERICAN PULL BUDDY

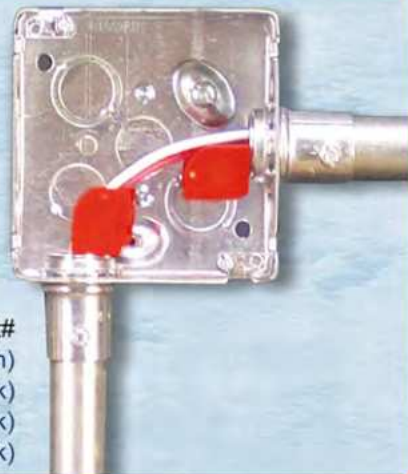
SHOEHORNS FOR YOUR WIRE



FEATURES:

- Reduces Time and Labor
- Reduces the chance of damaging wires
- Turns wire pulling into a one person job

Part#
 42000 - Multi-Pack (6 pack / 2 of each)
 42050 - 1/2" Blue (10 Pack)
 42075 - 3/4" Red (10 Pack)
 42100 - 1" White (10 Pack)



LB Wire Guide

THE LB WIRE GUIDE IS A "SHOE HORN" FOR 2" LB'S.

Part# 42200

FEATURES:

- Assists while working on your own
- For PVC LB fittings and is adaptable to most metal LB's
- Fast for one person conductor installations
- Installs in two positions to fit both "Ends" of the LB

MFG NOTE

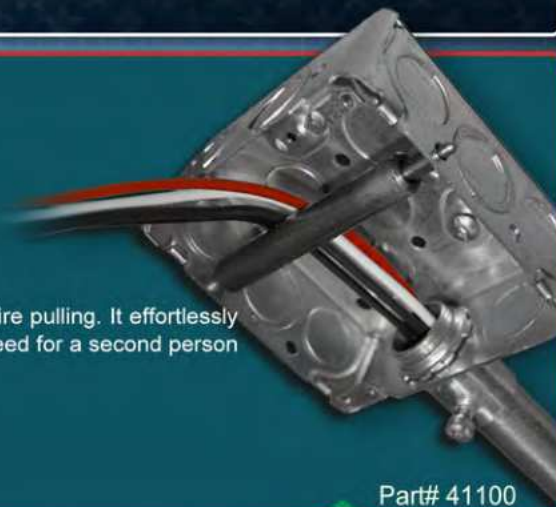
Two hundred amp services (3/0 wire) can be hard on your knuckles. The LB Wire Guide puts the wire in the pipe and leaves the skin on your fingers.



This slim, but strong, steel roller fits in all standard 4x4 boxes for smooth and controlled wire pulling. It effortlessly guides wire and cable into the feeding end of the job at the correct angle, eliminating the need for a second person to manually guide the feeding end.

Features

- Spring loaded tips keep it locked in place
- Stainless steel design for maximum strength



Part# 41100



WIRE VORTEX

If you need an extra pair of hands on the job, try the Wire Vortex. This wire pulling guide fits on 4" square boxes and saves you tons of time when pulling wire.

FEATURES:

- Protects wire from damage when pulling
- Can pull wire in all 4 directions
- Use for standard (shallow) or deep boxes
- Built with durable, impact-resistant plastic
- Easy to slip on and off



Part# 40001

FLEX FLYER

FEATURING "QUICK CHANGE SWIVEL HEAD"

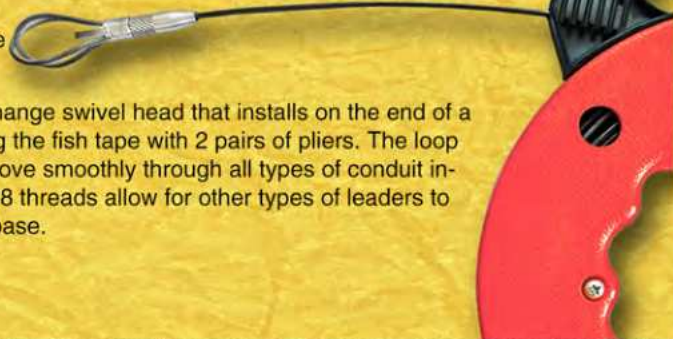
Part#
69050 - Flex Flyer 1/2"
69075 - Flex Flyer 3/4"



- Installs in under 20 seconds using two pairs of pliers, no torch needed
- Flies through those tough conduit runs
- Loop technology allows leader to glide through flex as well as all other types of conduit
- Loops allow leader to be snagged from other end of conduit run when necessary
- Standard 1/4"-28 threads allow for the use of other types of leaders on quick change base



The Flex Flyer features a quick change swivel head that installs on the end of a fish tape in 20 seconds by twisting the fish tape with 2 pairs of pliers. The loop technology allows the leader to move smoothly through all types of conduit including flex. The standard 1/4" - 28 threads allow for other types of leaders to be attached to the quick change base.



FISH-HEADS

Part# 69010

Tired of fish tapes getting snagged or breaking? Try Fish Heads to fix and improve your broken fish tape end.

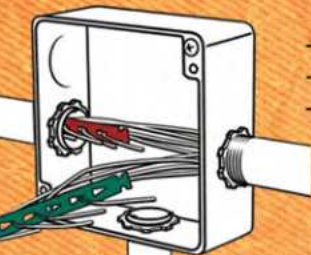
FEATURES:

- Complete spherical head reduces the chance of getting stuck
- Tapered back end
- Tested 500+ pounds
- Reusable



SNATCH STRAPS

Use the Snatch Strap for fast attachment on conduit pulls. No stripping or taping required!

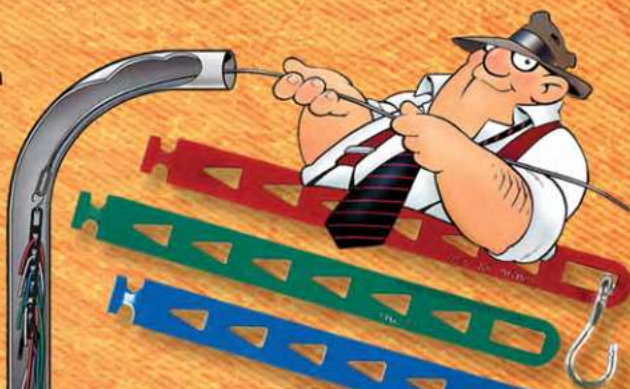


- Pull more conductors with less effort
- Can be chained together
- Color coded for easy circuit and phase identification

MFG Note:

Snatch Strap handles #22 - #12 AWG. If additional wires are required simply add additional straps.

Part# 69455





ROPEMATIC^{PRO}

THE SMART WAY TO PULL



STOP HURTING YOUR HANDS AND WRISTS.

STOP BREAKING EXPENSIVE FISH TAPE.

PULL ROPE AND FISH TAPE THE SMART WAY WITH THE ROPEMATIC.

The Ropematic has a durable latch that grabs rope or fish tape when you are pulling down. As you pull back up, the latch loosens and easily slides up the rope or fish tape. You can then pull down again and the Ropematic will grab the rope or fish tape, pulling it down.

The PUCK

Ground Clamp Socket



A NEW SOLUTION FOR INSTALLING GROUND CLAMPS

Grounding clamps are used to ensure complete discharge of electricity while servicing or maintenance of electrical power systems in substations. There are many varieties of clamps manufactured by different companies, each with different fastening configurations such as an eye-bolt or a T-handle.

Technicians use screwdrivers or channel lock pliers to tighten the grounding clamps. This sometimes produces a poor contact on the bus because of lack of accessibility. The Puck, when used with a standard 1/2 inch drive socket, provides the proper leverage in limited visibility or access areas, ensuring a proper contact on the bus.

Eye-bolts obstructed by cable further complicate turning the bolts with a screwdriver or channel lock pliers

Designed For:
Electricians
Electrical Workers
Linemen
Utility Industry



An "indicating line" for use when working blind.



The Puck fits most brands' T-handles.



The Puck also fits most brands' eye-bolts.

MARK MY WIRE

WIRE MARKING SYSTEM

USE HIGH DENSITY, QUICK DRYING
MARKERS THE OLD FASHIONED WAY OR
THREAD THE WIRE DIRECTLY THROUGH
THE HOLE IN THE MARKER'S TIP!

PAINTS ON 14, 12 & 10 WIRE!

AVAILABLE IN:

Blue

Part# 52480BL

Red

Part# 52480RD

Black

Part# 52480BK



PHASE WIRE MARKER

QUICKLY AND CONVENIENTLY USE THE UPHASE WIRE MARKER TO
COLOR CORDS AND WIRES FOR FAST AND EASY ORGANIZATION



BEFORE AFTER

Part#

52490BK - Black - 4 pack
52490BL - Blue - 4 pack
52490RD - Red - 4 pack
52490WT - White - 4 pack
52490BR - Brown - 4 pack
52490GR - Green - 4 pack
52490GY - Gray - 4 pack
52490OR - Orange - 4 pack
52490VT - Violet - 4 pack
52490YW - Yellow - 4 pack
52491 - 4 pack Kit (blue, red, white, green)
52493 - 4 pack Kit (gray, orange, yellow, brown)
52492 - Replacement tip



See it In Action!

- Electrical Panels
- Colour Coding Wire
- Identifying Wiring Circuits
- CAT-5 Ethernet Cable
- Audio/Video Cable
- HDMI Cable
- Automotive wire



PHASE IT RIGHT

PRE-PRINTED COLOR WIRE MARKERS



Phase marking is more than just a numbers game. Get it right with Rack-A-Tiers' colored phase marking tags

#52600 - Low Voltage Sticker Booklets
#1-45 (BK, RD, BL)

52615 - Low Voltage Sticker Booklets
#46-90 (BK, RD, BL)

#52630 - High Voltage Sticker Booklets
#1-45 (BR, OR, YW)

#52645 - High Voltage Sticker Booklets
#46-90 (BR, OR, YW)



PHAZER III

STICK IT WHERE YOU WANT



The Phazer 3 sticker allows electricians on the job to associate the correct circuit with the corresponding number accurately. The Phazer 3 reference guide, which fits conveniently on your tape measure, will ensure every job is completed as quick as possible, saving time and money.

Durable
Clear Coat

Easy To
Read Lettering

Aggressive
Adhesive

Part# 52700



Part# 52500

DURABLE WATERPROOF ULTRA-FLEXIBLE

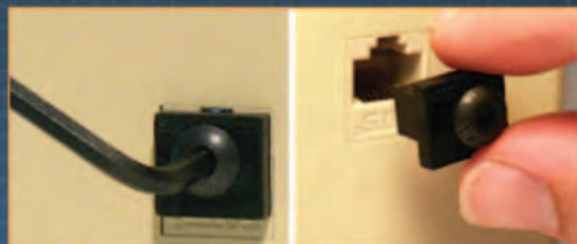
Steve's Sticky Tags all-purpose self-laminating armored cable markers.

- Durable
- Waterproof
- Designed specifically for B/X and MC armored cable
- Includes permanent marker
- 100 Tags per book
- Ultra-Flexible



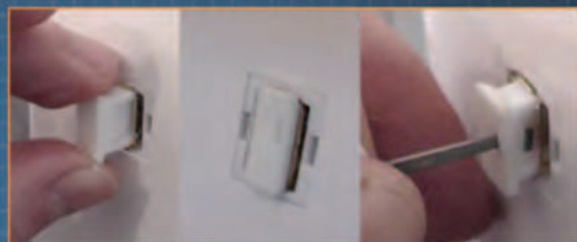
Jack Locks (10 Pack) Part# 75045

Jack Locks can give you the extra physical security that you need. The Jack Locks can be used in a variety of locations. For example, blocking unused ports on a switch to prevent unauthorized access. The RJ45 Jack Lock can prevent damage of an upgrade port on a wide range of devices. POS customers use this device to add security to their network and help prevent tampering with credit card machines. (PCI COMPLIANT)



USB Locks (10 Pack) Part # 75050

The patent pending USB Locks are a lockable port blocker. Install them without any tools, just slide the USB port block fully into the port. To remove the USB port blocker, insert the tool provided then slide it towards the center of the block out device, then pull towards you.



Patch Locks (10 Pack) Part# 75055

The RJ Patch Cord Lock works on patch cords that don't have a strain relief, as well as ones that do. To attach the lock to the modular plug, first slide the lock over the patch cord. Then insert the patch cord into the RJ45 jack. Next, slide the lock forward under the tab. Finally, secure the two outer set screws down onto the modular plug.



Proprietary Jack Locks (10 Pack) Part# 75060

The RJ45JLP-10X are Jack Locks that are color coded with their own key. For example, only the red key will work on the red locks. These are great for networks to identify the ports. Red could mean bad port, yellow could be printers and green could identify a good port but you need to contact head of IT before adding device. Jack Locks don't just stop unauthorized use of ports but can help organize your network.



BREAKER LOK

SECURE ANY CIRCUIT BREAKER IN THE ON POSITION WITH EASE!

- Universal lock fits most breakers & standard toggle switches.
- Set screw and rigid leg prevents lock from slipping off breaker.
- Reusable & corrosion resistant.



Part# 75000 - 5 Pack

TrunkTie

What is Trunktie?

Trunkties are a simple solution designed to hold, hang, or tag things in position relative to an unpopulated port. Their most common use is to hold tags for identifying network ports, but our customers have found countless creative applications for their use.

How it works

Trunkties plug into an unused port, providing a flexible cable that secures into a multipurpose loop. That's all, it's that simple.



Part # 75065 (Pack of 25)

Part# 67119

SLUGGO OX™

THE SLUGGO-OX IS THE ULTIMATE GROUND ROD DRIVING TOOL.

Just one piece and incredibly strong. It delivers the kind of power and strength you need to easily install ground rods, rebar, & other metal objects.



FEATURES:

- Incredibly strong: made of 3" hot-rolled, heat-treated, hardened steel
- 3 1/2" bore to accept 3/4" and 5/8" ground rods
- 80% more striking surface
- Yellow zinc chromate surface to deter rust



The Ground Pounder™

GROUND ROD DRIVER



- Weight: 18 lbs.
- For use on 5/8" and 1/2" Ground Rods
- Safe and easy to use
- No more dragging hydraulic lines

Tired of dragging out the hydraulic hoses to drive a ground rod? The Ground Pounder™ was designed by a lineman who knows about driving ground rods. Quickly and safely drive standard 5/8" and 1/2" ground rods with both feet on the ground.

The Ground Pounder™ handle slides over the ground rod to safely contain the rod while the weighted end drives the rod down. The length of the handle allows for a full striking stroke while the weight does all the work.

Once the handle is flush with the ground, turn the Ground Pounder™ over and use the flat end to finish the drive.

Part# 67150



1" Pipe & Conduit

1 1/4" - 1 1/2" Pipe & Conduit

2"x2", 2"x4", 2"x6" Lumber

3"- 4" Pipe Conduit
4"x4" Lumber & 4" Angle Iron & Tubing

1"x2" Lumber & 7/8" Unistrut

2" - 2 1/2" Pipe & Conduit & 2" angle Iron & Tubing

1/2" - 3/4" Pipe & Conduit



PLATE VISE

Part#13355

I SURE COULD HAVE USED THAT LAST WEEK



- This one size fits all
- Holds many sizes of pipe, lumber, unistrut, and more
- Contact points do not allow materials to move or spin
- Labor and time saving
- Lightweight and portable





EC&M®
Product of the Year
2019 Category Winner



Part# 99300

FERRET™ WiFi

WIRELESS INSPECTION CAMERA AND CABLE PULLING TOOL

The award-winning Ferret WiFi is the world's first true multipurpose miniature 720p wireless inspection camera. The Ferret live streams video footage directly to your smartphone. 6 Bright White LED's allow you to see into any area that the Ferret will fit in. The Ferret can be threaded on most Fish Sticks giving you increased versatility and mobility.

Features:

- Wireless range up to 40'
- 720p HD Streaming
- Built-in WiFi Hotspot
- Adjustable Bright LED's
- Record photos and audio video direct to your smartphone
- Free easy to use app to suit both Android and iOS
- Can be mounted on the Ferret stick (not included) or most Fish Sticks
- Features digital zoom in the Ferret App
- Gets the job done quicker, safer and smarter
- Comes with a range of accessories – gooseneck, short rod, hook and magnet to enhance functionality



Our Fiberfish and Glowfish rods with a durable plastic coating offer the same great performance with no risk of splintering or slivering of the fiberglass.

PLASTIC COATED GLOWFISH

5/32" Diameter luminous rods

Super flexible glow-in-the-dark rods with our new plastic coating process. Great for tight jobs. The handy clear carry case keeps them constantly "charged" and ready.

KITS

- GLF407 Glowfish Kit contains: 1 - 6' B/F, 4 - 6' M/F w/ tips
GLF408 3' Glowfish Kit contains: 1 - 3' B/F, 3 - 3' M/F rods w/ tips

REPLACEMENT RODS

- GLF403 6' Bullnose/Bullnose (B/B) rod
GLF406 6' Bullnose/Female (B/F) rod
GLF410 6' Male/Female (M/F) rod
GLF414 3' Bullnose/Female (B/F) rod
GLF415 3' Male/Female (M/F) rod



PLASTIC COATED FIBERFISH II

3/16" Diameter orange rods

The most versatile of the Fiberfish with our new plastic coating process. Perfect for a wide range of installation situations and challenges.

KITS

- PCF207 Fiberfish Kit contains: 1 - 6' B/F, 4 - 6' M/F w/ tips
PCF208 3' Fiberfish Kit contains: 1 - 3' B/F, 7 - 3' M/F rods w/ tips
PCF230 "FourPack" contains: 1 - 3' B/F, 3 - 3' M/F, tip, and FishHook in vinyl pouch

REPLACEMENT RODS

- PCF206 6' Bullnose/Female (B/F) rod
PCF210 6' Male/Female (M/F) rod
PCF214 3' Bullnose/Female (B/F) rod
PCF215 3' Male/Female (M/F) rod





FIND IT
Locate cables with ease



HOOK IT
Visibility in complete darkness



PULL IT
Pull cable in half the time

FERRET STICK

Part# 99305

EXTRA REACH YOUR FERRET WIFI CAMERA

Introducing the new Ferret Stick, an extendable rod made of high quality materials. The Stick is made of light-weight stainless steel with a non-slip rubber handle and it expands up to 55".

TELESCOPIC RODS

Part# 82016 –Standard Telescoping Pulling Poles 16"
Part# 82026 –Standard Telescoping Pulling Poles 26"

FEATURES:

- Non-conductive, wound filament fiberglass won't rust or corrode
- Polyester resin baked enamel coating
- All purpose hook included



LED TIP ATTACHMENTS

LED Tip Part# FIB555,
for 5/32, 3/16 and 1/4 Rods

Add the LED tip to your Fiberfish Rods to see exactly where your Rod is going.



MISC. ATTACHMENTS

- FishHook - Use to retrieve or snag wire & cable.
- Directional Tool - Offset bend helps guide the Fiberfish around obstructions in walls.
- Magnet Head - Used with Fish Finder or to catch the ball chain inside wall cavities.
- Pull Ring - Used to attach multiple wires for larger pulls.
- Ball Chain - Attach to Fiberfish for interior wall pulls — can be retrieved through small access hole in wall with magnet or Flex-Fish.
- Wisp Head - Use over suspended ceilings — won't catch on T-bars.
- Screw Tip - Screws into the end of small communication wires for faster and easier pulls.

ATTACHMENT KIT CONTAINS:

- FishHook
- Directional Tool
- Magnet Head
- Pull Ring
- Ball Chain
- 2 replacement tips
- Stored in convenient vinyl pouch

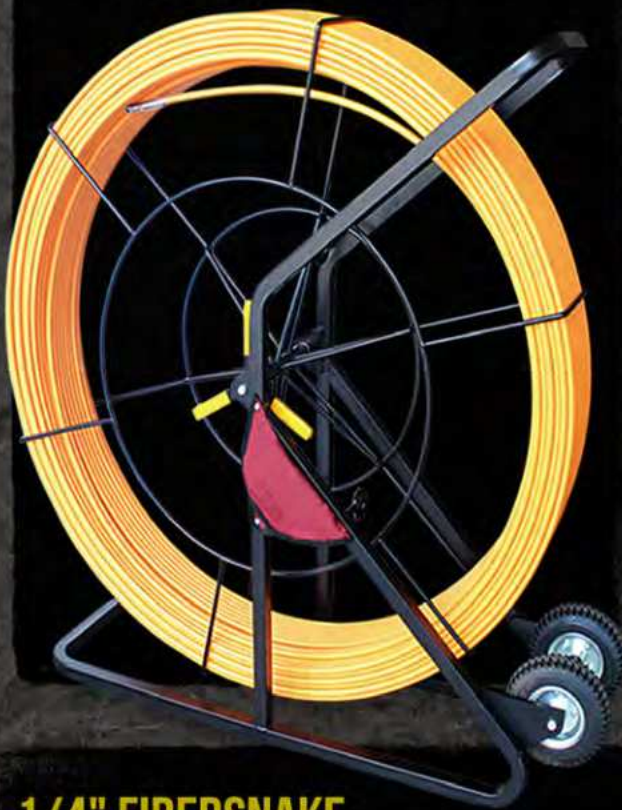


FIB520 Universal Attachment Kit for ALL (3/16" rods) & (5/32" rods)

Fiber Rodders

1/2" Part# FS12657 - 1/2" x 657' Part# FS12985 - 1/2" x 985'

- Fiberglass reinforced plastic with durable plastic surface coating
- Up to 985 ft in length, the 1/2" fish tape is excellent for the big fishing jobs
- Threaded stainless steel ends can be coupled with 4 different end types, including flexible guide, roller guide, pulling eye and clevis.
- High quality, cantilevered frame design provides good leverage and better balance when hoisting onto wheels
- Rubber wheels provide good traction and a smooth ride when transporting from truck to work location



3/16" Part# FS316200 - 3/16" x 200' Part# FS316300 - 3/16" x 300'

- Fiberglass reinforced plastic fish tape with durable low-friction polyamide coating
- Light and durable steel frame with anti-corrosion surface treatment
- Adjustable knob allows for easy control of wheel rotation speed
- Threaded brass ends can be coupled with ridged pulling eye or flexible guide type leads.
- Brass ends affixed with embedded pins for extra strength, holding up to 300 lbs of force.



1/4"

- Fiberglass reinforced plastic with low-friction plastic coating for smooth pulling.
 - Breaking strength of 1400 lbs
 - Available in a variety of lengths
- Sleek brass pulling eye with large eyelet for easier access
- Light and durable steel frame with anti-corrosion surface treatment
- Adjustable knob allows for easy control of wheel rotation speed



Part# FS14200 - 1/4" x 200'
Part# FS14250 - 1/4" x 250'
Part# FS14300 - 1/4" x 300'
Part# FS14400 - 1/4" x 400'
Part# FS14500 - 1/4" x 500'
Part# FS14600 - 1/4" x 600'

FIBER RODDERS SPLICE KIT



FS12.END -End Repair for 1/2" Fibersnake
FS12.EYE -Eye-Loop for 1/2" Fibersnake
FS12.SPL -Splice Repair for 1/2" Fibersnake
FS14.END -End Repair for 1/4" Fibersnake
FS14.SPL -Splice Repair for 1/4" Fibersnake

1/4" FIBERSNAKE

FS14200 RR200 200' Replacement Rodder only
FS14250 RR250 250' Replacement Rodder only
FS14300 RR300 300' Replacement Rodder only
FS14350 RR350 350' Replacement Rodder only
FS14400 RR400 400' Replacement Rodder only
FS14450 RR450 450' Replacement Rodder only
FS14500 RR500 500' Replacement Rodder only
FS14550 RR550 550' Replacement Rodder only
FS14600 RR600 600' Replacement Rodder only

5/16" FIBERSNAKE

Fibersnakes and Replacement Rodders are available in 400'-1000'

Fibersnakes Part# FIBL400-FIBL1000

Replacement Rodder Part# RL400-RL1000

FIBERSNAKES

Fibersnake, Fishtapes and Rodders are designed for use in conduit. The reinforced fiberglass core is jacketed with a plastic coating for superior flexibility and durability. Non-conductive, so it's great for conduit with existing wiring. Rust-proof brass tips and fittings.

3/16" FIBERSNAKE

FIBT50 Fibersnake RT50 50 Replacement Rodder only
FIBT100 Fibersnake RT100 100 Replacement Rodder only
FIBT150 Fibersnake RT150 150 Replacement Rodder only
FIBT200 Fibersnake RT200 200 Replacement Rodder only
FIBT250 Fibersnake RT250 250 Replacement Rodder only
FIBT300 Fibersnake RT300 300 Replacement Rodder only

Rodder Diameter	Recommended Conduit Sizes (inches)	Maximum Length (feet)
(FS316) 3/16"	1/2, 3/4, 1, 1 1/4	300'
(FS14) 1/4"	1, 1 1/4, 1 1/2, 2, 2 1/2	600'
(FIBL) 5/16"	1 1/2, 2, 2 1/2, 3, 3 1/2, 4	1000'
(FS12) 1/2"	4+	985'



FFS: FUSION FISH TAPE

We've combined the strength of a steel fish tape with the smooth flexibility of a nylon fish tape to create the best of both worlds. This fish tape features a twisted steel wire core coated in polyethylene for maximum strength, durability and decreased friction issues.

Part# ESS100

100' Stainless-Steel Wire Rope w Polymer Cover in Yellow Case

Part# ESS200

200' Stainless-Steel Wire Rope w Polymer Cover in Yellow Case

**THE BEST HYBRID STEEL/POLYMER
FISH TAPE ON THE MARKET!
MADE WITH PRECISION IN ITALY**



POLYESTER FISH TAPE IN CASES

THESE NON-CONDUCTIVE, LIGHT-WEIGHT FISH TAPES IN CASES ARE PERFECT FOR LINE OR LOW VOLTAGE FISHING. AVAILABLE IN SINGLE OR THREE STRAND DEPENDING ON THE JOB.

Part# EP515C - 1 strand - 49.2' (15m)

Part# EP530C - 3 strands - 98.4' (30m)

POLYESTER FISH TAPE

4 CORE GREEN & BLACK POLYESTER FISH TAPE:

100ft (30M) The 4 core twisted polyester fish tape is the strongest and most powerful product suitable for long distance electrical work.

Part# EP430G

3 CORE RED & BLACK POLYESTER FISH TAPE:

100ft (30M) 3 core twisted polyester fish tape for increased strength and flexibility.

Part# EP330R

2 CORE POLYESTER FISH TAPE:

165ft (50M) 2 core twisted polyester fish tape coated for reduced friction.

Part# EP250Y

SINGLE CORE POLYESTER FISH TAPE:

100ft (30M) single core twisted polyester fish tape for coated for a light, economical option.

Part# EP130B



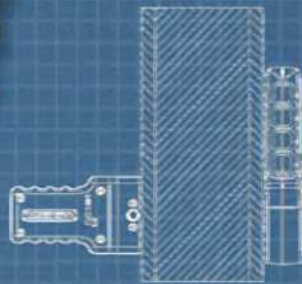
MAGNE SPOT



Part# 42900



The Magnespot is a reference point locator that gives users complete self-assurance before drilling, cutting, or any other task you may previously had to do blindly. Place the Magnespot Transmitter on the wall, ceiling, or floor that you need to drill. On the other side hold the Receiver in the general direction of the transmitter, the red LED arrows on the Receiver will indicate to you which direction to move. When all 4 Arrows illuminate, the Transmitter and Receiver are lined up within a 1/2 inch.



Senses up to 30" through concrete & 60" wood frame wall



NEED A NEW LADDER?
CHECK OUT THE BACK PAGE
FOR MORE INFORMATION

LASER PLUMB BOB

Looking for a better way to lay out complex ceiling and high bays? The Laser Plumb Bob, self leveling vertical laser from Rack-A-Tiers is the answer!

FEATURES:

- Solid brass construction
- Factory aligned laser module calibrated to precise 0.15 accuracy
- Magnetic damping for quick stabilization
- Self leveling and aligning (vertically)
- Durable plastic carry case
- Battery included

MFG NOTE:

For all commercial, industrial, or residential installations. Great for laying out ceiling lights.

PART

88455 -LASER PLUMB BOB

REPLACEMENT PARTS

88-ARM - LASER PLUMB BOB ARM WITH MAGNET ATTACHED

88-BASE - LASER PLUMB BOB BASE

88-BAT - LASER PLUMB BOB BATTERY CR 123

Before



After



MAGNEPULL



Extremely powerful, yet delicate, magnetic wire snake for fishing wire through walls. It even works through insulation! This new version has a much stronger magnet and a smoother rolling surface.

FEATURES:

- Hand roller with powerful magnet & smooth finish to avoid damaging walls
- 6' ball chain included
- Flexible leader with magnet head
- Also makes a great stud finder



MFG NOTE

Any fiberfish can easily be threaded onto the magnet head. This will help push through dense insulation and guide through fire-block drill holes.

Part# 42800



LASERLINE

REDUCE EFFORT IMPROVE PRODUCTION CUT LABOR EXPENSE



FEATURES:

- Accurately install a pull line up to 200ft
- Cuts labor costs and improves production
- Ability to span over heavy and hard to move objects found in many commercial structures
- Replacement line and darts available

MFG NOTE

- The Laserline Kit includes 1 gun, 2 spools of line (1200 ft each), 2 darts and 2 generic CO2 cartridges.

PART #

83000 - LASERLINE KIT

83001 - REPLACEMENT LINE 2-1200FT

83003 - DART 3 PACK

Tired of wiggling through a crawl space just to drag your wire to the other end? Fire the Laserline, attach your wire, then walk around and pull it across while standing. It's that easy!

The CO2 powered gun shoots a foam dart with a line attached to it up to 200ft. Stop climbing your ladder and moving it every ten feet to pull your wire across a t-bar ceiling. Pull your wire the entire distance in one shot with the Laserline!

COMBO TOOL BELT

INCLUDES:

Molded support belt, Electrician's tool pouch, Large 9 pocket tool pouch, Hammer holster and tape holder.

FEATURES:

- Reinforced with bar-tack stitching & heavy duty metal rivets
- 1250 denier DuraTek fabric with high density nylon webbing around pocket openings.



Find Out More!

Part#

- 43241 - Small Combo
- 43242 - Medium Combo
- 43243 - Large Combo
- 43244 - X-Large Combo
- 43245 - XX-Large Combo
- 43246 - XXX-Large Combo
- 43201 - Electrician's Tool Pouch
- 43202 - Lrg 9 Pocket Tool Pouch



MOLDED AIR-CHANNEL SUPPORT BELT

FEATURES:

- The first ever 'Molded Air-Channel Tool Belt' that offers incredible comfort, support, & ventilation for your back.
- The high density nylon 'Web Core' inside the padded belt provides strength to stitching & stress points.
- Metal rings are stitched to the belt's web core with high-density nylon webbing that provides the strongest way possible to attach suspenders.
- All stress points are reinforced with 'bar-tack' stitching along with heavy duty rivets.
- Double metal buckles that add strength and dependability.
- All of our belts and bags are made from double layered 1250 denier DuraTek fabric.
- Available in sizes from 26" to 54"

- 43401 - Small Belt
- 43402 - Medium Belt
- 43403 - Large Belt
- 43404 - X-Large Belt
- 43409 - XX-Large Belt
- 43410 - XXX-Large Belt



SMALL 25 POCKET TRAY TOOL CARRIER

FEATURES:

- 16 exterior pockets
- 9 interior compartments and pockets
- 1 qty 7" x 5.5" 12 compartment plastic tray
- 10.5" W x 10.5" L x 8" H
- Tape holder
- Includes shoulder strap

Part# 43707



LARGE 44 POCKET TRAY TOOL CARRIER

FEATURES:

- 29 exterior pockets
- 1 large clear pocket
- 14 interior compartments and pockets
- 2 qty 7" x 5.5" twelve compartment plastic tray
- Tape holder
- Includes shoulder strap

Part# 43706



SNAP SACK

Part# 43150

NEW CANVAS & LEATHER TOOL APRON



Most tool aprons are just made out of canvas, which is NOT the flimsy material you want full of screws, staples and countless other sharp objects – especially in such a sensitive area! If you want comfort, functionality and durability the Snap Sack is the apron for you. The leather lining will assure that you don't get poked, jabbed or shanked on the job!

Features:

- No strings to tie or untie
- Clip to your belt with snap buttons or use the carabiners on your belt loops
- Leather liner helps protect from damage and poke throughs

MOLDED AIR-CHANNEL SUSPENDERS

INCLUDES:

- Adjustable thick molded foam shoulder pads
- 2" wide adjustable nylon straps
- Leather crossover divider
- Heavy duty spring hooks that attach to the rings on the molded Air-Channel belts

Part# 43606

FEATURES:

Our popular padded suspenders easily clip onto the sturdy metal rings that are built into our tool belts. The padded shoulder straps make these the ideal set of suspenders for your tool belt rig.



GEL IMPLANTED KNEE PADS



FEATURES:

- Sturdy
- Comfortable
- Hook & Loop Straps

Part# 66455



BUTT POUCH POCKET TOOL HOLDERS

FEATURES:

- Quick to put on & COMFORTABLE!
- Tool pouches fit in your pocket
- Made of ballistic nylon
- Lightweight & durable



GRANDE

Part# 43095



PAPA GRANDE

Part# 43100



MINI

Part# 43015



PROJOB

Pants & Shorts



Poly-Cotton Blend Multi-Pocket Protector Pants

FEATURES:

- Two hanging pockets that can be tucked away (One side has extra pockets, one side has tool slots)
- Tool pockets are reinforced with 100% Cordura
- Two adjustable hammer holders, cell phone pocket, two d-rings and pen pocket
- Opening on the inside for knee pads
- Material: 65% polyester, 35% cotton
- Color: Navy



Mid Weight Shorts

FEATURES:

- Two hanging pockets that can be tucked away (One side has extra pockets, one side has tool slots)
- Tool pockets are reinforced with 100% Cordura
- Two adjustable hammer holders, cell phone pocket, two d-rings and pen pocket
- Material: 70% polyamide, 30% cotton
- Color: Grey



Full Weight Multi-Pocket "High Vis" Protector Pants

FEATURES:

- Two hanging pockets that can be tucked away (One side has extra pockets, one side has tool slots)
- Tool pockets are reinforced with 100% Cordura
- Two adjustable hammer holders, cell phone pocket, two d-rings and pen pocket
- Opening on the inside for knee pads
- Material: 100% Cotton
- Color: Grey

Mid-Weight Multi Pocket Pants

FEATURES:

- Contrasting tones construction pants with holster pockets that can be tucked in, one with extra pockets and one with tool loops
- The nail pockets are reinforced with Cordura®
- Deep side pockets with room for the hanging pockets
- Two adjustable hammer holders
- Two D-rings
- Folding rule pocket with tool pocket and knife button
- Height adjustable inside kneepad Cordura® pockets



* FOR PART NUMBERS AND SIZING PLEASE VISIT RACK-A-TIERS.COM

Booty Pack



Booties available in bulk and bags of 6 pairs.

Part#

47099B - Booties (40 Pairs)

47099BB - Six Pack of Booties

Exploding

GARBAGE CAN ULTRA



Part# 51020



NEW!
ULTRA-DURABLE
PLASTIC BOTTOM



The Exploding Garbage Can Ultra is the new and improved pop-open garbage can. Utilizing the same concept as our Classic Exploding Garbage Can but featuring a reinforced hard bottom for increased durability. Perfect for on the job, camping, tailgating or landscaping.



EXPLODING GARBAGE CAN

Classic

One of our classic tools that everybody loves, the Exploding Garbage Can comes in use every single day. This collapsible trash container, featuring an internal support spring that "springs into action", is made of heavy duty, tear resistant 600D Oxford Polyester fabric.



Find Out More!

FEATURES

Size of 19" x 24" when open

Size of 1 1/2" x 24" when collapsed

Part# 51000



STUD BALL

MAGNETIC STUD FINDER

The Stud Ball is a protected magnetic stud finder that will out-perform all other types of magnetic stud finder on the market. Unlike other steel stud finders, the Stud Ball can detect metal through 1/2" or 5/8" drywall or other thicker building materials. Will also work through ceramic tiling and up to 3/4" plywood paneling.

SEE IT IN ACTION



- Rare Earth magnets with 27 lbs of pull
- No batteries required
- Detects screws or nails in wood frame walls

Part# 52300



Part# 40905 - 1/2" thread
40907 - 3/4" thread
40910 - 1" thread

PIPE SPINNER

WRAP A 10 FOOT PIPE IN 10 - 20 SECONDS!

The Pipe Spinner allows you to speed up the process of taping IMC, galvanized conduit or black iron conduit in mil tape for underground applications. Instead of taping the pipe by hand, simply attach The Pipe Spinner to your drill and have your co-worker hold the tape while you spin the pipe.

FEATURES:

- 1/4" drill attachment for quick change drills
- Available in 3 sizes: 1/2", 3/4" and 1"
- Saves time and money



THE ROUGH-IN STICK

The Rough-In Stick allows you to mark out devices conveniently and efficiently by utilizing specifically designed holes to fit your felt marker. The Rod also features a telescopic pole for those tricky fishes.

FEATURES:

- Easily mark stud walls for device installation
- No need to use your tape measure while laying out devices
- Telescopic pole aids in pulling wire above ceiling grids and areas of limited access
- Extends up to 16'

MARK STUDS AT 12", 18", 42", 48" & 60"



Part# 82000





GPS LIGHTLOCK ASTRONOMICAL TIMERS

Onboard GPS does all your programming & maintenance

GPS LightLock automatically sets your date/ time & location, programs the switch times for your location, self-recovers from power outages & keeps the clock timed to the GPS atomic clock. You'll never have to deal with controls maintenance again, and you never pay a fee to use the GPS system!

Pays for itself many times over in servicing costs alone

Servicing controls is very expensive. Electricians perform hazardous work. They are well paid, as they should be. The retail price of GPS LightLock is a fraction of the cost of a single service trip charge to replace a photocell or re-program a timer.

GPS LightLock now offers custom programming to meet your requirements stored in memory forever, and you still won't have to program a timer ever again. Still self-recovers from power outages and still requires no user programming, maintenance or even batteries!



See it In Action!



Twist-Lock Astronomical Timer 120-277VAC

Installs in under a minute!
The world's only fully automatic astronomical timer. Switches lights dusk-to-dawn anywhere in the world. Plug & play. Never needs programming. Self recovers from power outages. Direct replacement for twist-lock photocells.
Part# 85-GPS-MV-T

Wire-In Astronomical Timer 120-277VAC

Our most popular model. Includes twist-lock astronomical timer plus wire-in twist-lock socket with 1/2" standard female thread. Direct replacement for all wire-in photocells and programmable timers.
Part# 85-GPS-MV-W

GPS SATELLITE SIGNAL

GPS LightLock

THE WORLD'S MOST RELIABLE SMART TECHNOLOGY

THE WORLD'S MOST ACCURATE TIME KEEPING SYSTEM

GPS LightLock

- Self-Programming
- Maintenance Free for 15 Years
- Self-Recovers from Power Outages
- No Servers, Software or Network Infrastructure
- Nothing to Learn, Monitor or Maintain

TRACER WIZARD TONER ADAPTOR

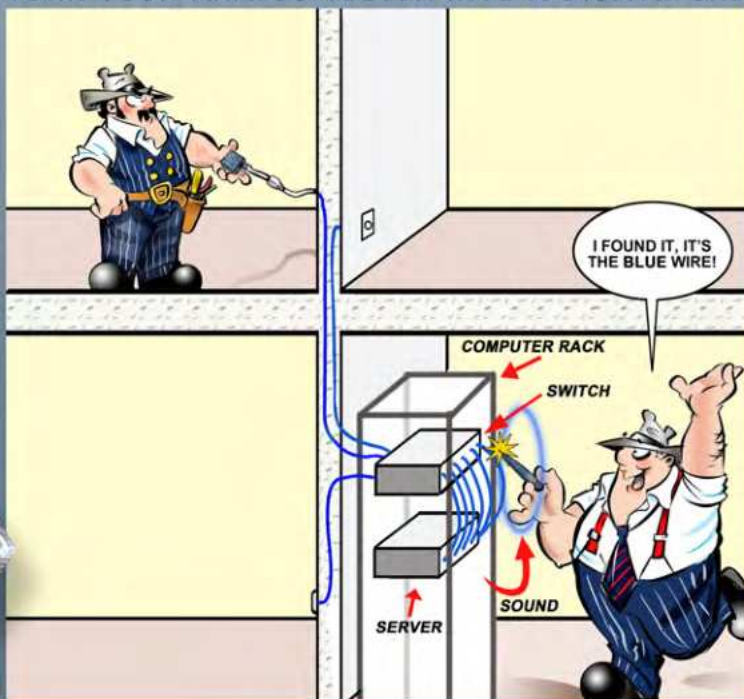
Features:

- Devices do not have to be taken offline to tone out
- Locating cables is fast and easy as long as the Wizard is connected between the tone generator & jack
- A must have tool for a toolbox
- No batteries required



Part# 99060

TURN YOUR ANALOG TESTER INTO A DIGITAL ONE!



FLASHLIGHTS



Part# 53500

STICK BUG JR.

60 lumens

THE STICK BUG

The Pocket Light just got brighter, stronger and better. Some call it supercharged! With the new technology of COB LED technology, it has 150/160 lumens - 2 times the amount of the original pocket light. With the durable and strong pocket clip and improved magnetic base, you'll never be left out in the dark again

FEATURES:

- COB LED
- 160 Lumens
- Operates on (3) AAA batteries
- Up to 7 hours run time
- Water resistant button
- Batteries included



Part# 53600

Stick Bug
160 lumens

HEAD LIGHT

USB RECHARGEABLE

Part# 54075

Bulb: COB LED

Max Output: 150 Lumens

3 Modes: High, Low and Strobe

Runtime: High (4 Hours) Low (12 Hours)

4-hour charge time

Impact and Water Resistance

STANDARD BATTERY OPERATED

Part# 54050

Features:

Bulb: COB LED

3 AAA Batteries Included

Runtime: 5 hours

Max Output: 150 Lumens

BAT LIGHT

The Bat flashlight has a durable, scratch and corrosion resistant anodized aluminum frame.

10" Bat Flashlight

Part# 53700

- 3W Cree LED 300 Lumens

- 3 x AA Batteries Included

12" Bat Flashlight

Part# 53750

- 3W Cree LED 300 Lumens

- 3 x AAA Batteries Included



THE SILVER BULLET

Part# 53800

12-24v Car Charger Flashlight

FEATURES:

- CREE LED 300 Lumen
- Li-ion Battery
- Aluminum Alloy
- Recharge Time 2-3 hours

FIREFLY

Part# 53400

The Fire Fly is a compact aluminum flashlight that features 3 light outputs with and has an output of 120 lumens.

FEATURES:

- 120 lumen output
- Light Modes: High output, low output, flash
- Mechanical zoom function
- 3 AAA batteries included



LED SAFETY HEADBAND LIGHT

The Safety Headband Light attaches to any hard hat and produces a ring of light around the wearer, enabling him or her to be easily seen in all directions.



Part#'s

54000 - Standard

54020 - Rechargeable

FEATURES:

- Shadow-free, panoramic visibility
- Non-slip hard hat attachment
- Only 40 grams (1.4 oz) extra hard hat weight
- Powered by two button cells or rechargeable LED
- Operates up to 24 hours with premium brand batteries or USB Charger



PLUG MASTER

The Plug Master combines a full function dual-outlet circuit tester with 220V detection and multiple direction bubble-levels. Eliminate the need for multiple tools to test and straighten any wall outlets.

FEATURES:

- Acts as horizontal and vertical level
- Use for diagnostics
- Perform quick wiring checks
- Panel identifies conditions shown by LED indicators
- Removable side panels cover outlet during insertion



Part# 99102

AC SENSOR & ULTIMATE AC SENSOR

Prevent electrical shock with this simple tool to locate dangerous defective grounds. This handheld device helps you determine the presence or absence of 50-1000 Volts AC in insulated wires, wall receptacles, fuses, junction boxes, and voltage carrying electrical systems. The bright, red glow indicates AC voltage.

FEATURES:

- Non-contact detection of 50-1000 VAC
- Includes 2 replaceable AAA alkaline batteries
- Senses voltage without metallic contact
- Outstanding safety instrument



Part# 99000 (Red Glow - No Sound)



Part# 99001 (Red Glow - w/Sound)

DUALCHECK™ NON-CONTACT VOLTAGE TESTER

Part# 99150

Save time and money with 2 popular testers in 1 unit - featuring a Non-Contact Voltage Detector on one end and GFCI Outlet Tester on the other.

FEATURES:

- 360 degree LED indication
- Loud beeping audible indication
- Exclusive 1 LED readout. No Charts. Instant results
- On/Off button



JET LEVEL

This convenient and strong pocket level comes with 4 precision vials of 0, 30, 45, and 90 degrees.

FEATURES:

- CNC milled from 6061 aluminum extra large "VD" groove, straddles up to 10" diameter
- Rare Earth magnets for extra holding
- Water and shock resistant



Part# 45404

THE SWIVY: CONDUIT BENDING LEVEL

Part# 45500

Conventional conduit bending levels tend to walk when clamped down. Conventional conduit levels also must be clamped exactly to the horizon of the pipe. If it is not, the pipe has to be rolled to set the bubble level. The Swivy eliminates these problems by allowing the unit to be clamped to the pipe anywhere around the circumference, and then adjusted to level. No more rolling pipe.



FOLLOW US ON    

WWW.RACK-A-TIERS.COM

SALES@RACK-A-TIERS.COM

TOLL FREE: 1 (888) 939-9991

AERIAL TOOL BIN

The Aerial Tool Bin offers a safe and efficient way of storing your tools at waist height while on a variety of Man-Lifts. It is designed to be used on: Aerial Platforms, Scissors Lifts, Boom Lifts, Scaffolding, Swing Stage Railings, and Mast Climbers.



Part# ATB1312



*Tools sold separately

LADDER MATE

MULTI-USE LADDER ORGANIZER

Part# 65300

TOOL HOLDER & PAINT TRAY WITH ADJUSTABLE DIVIDERS

- EASY TO ATTACH
- ADAPTER CLIPS INCLUDED
- WORKS WITH MOST FIBERGLASS, ALUMINUM & WOOD STEP LADDERS

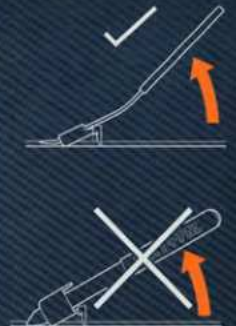
*Tools sold separately



STAY+PAL

ELECTRICAL STAPLE SETTER

The StayPal is a tool used to aid in the installation and removal of electrical staples, making your job easier and preventing injury. Install or remove 1/2" and 9/16" steel staples.



Part# 52460U



NEEDLE NOSE WIRE STRIPPERS

Sometimes referred to as the best wire strippers on the market, the Croc's Needle Nose Wire Strippers will impress even the toughest critics. These strippers have countless features, each designed to make your job easier and more productive.

FEATURES:

- Glow in the dark handles
- Ergonomic handle design for maximum comfort
- Needle nose tips
- Strip from 22-10 AWG
- Barrel Sleeve Crimper
- NMSC cutter near the "nose" of the stripper
- 8-32 and 6-32 bolt cutters

Part# 47000



Introducing the Croc's Jr., A compact and lightweight version of the original. This model serves as an affordable predecessor to the original without skimping on its numerous applications.

FEATURES:

- Glow in the dark handles
- Ergonomic handle design for maximum comfort
- Compact design
- Strip from 22-8 AWG
- 8-32 and 6-32 bolt cutters

Part# 47002

SEE IT IN ACTION



V-CUTTER

ELECTRICIAN'S ADD-ON CABLE STRIPPER

STRIPS CABLE IN OR OUT OF ELECTRICAL BOXES WITH EASY TO PUSH ACTION

One of the smartest inventions to come to market this decade is the V-Cutter. This simple little blade attaches to most wire strippers and allows you to strip cable with a single swipe.

FEATURES:

- A new way to strip NMSC cable
- Easily attaches to most wire strippers
- Strips cable in or out of electrical boxes with action
- Virtually eliminates nicking or cutting the wire insulator

Part# 47010



Part# 52455



FEATURES:

- Includes a handy staple puller and pry bar for multi-purpose use!
- Ruler for quick on the job measurements.
- Use as a quick carpenter's square.
- Holds staples in tight spots and will open a beer bottle at the end of the day.



SEE IT IN ACTION



STAPLE PULLER!



HOLDS STAPLES!



PRY BAR!



RULER!



BEER OPENER!



CO-PILOT

PART# 91720

FEATURES:

- Enlarge any hole while keeping it centered
- Hole enlargement made fast and easy in under 2 min
- Versatile fit works with all arbours
- Can be used for wood, plastic, drywall (limitations set by hole saw)
- Small enough to fit in most hole saw kits
- Accompany with the Dust Bowl for mess free result



MULTI BIT: STEP DRILLS

Hardened stepped bits for clean cuts in sheet metal, electrical boxes, arborite, etc. Handy for creating knockouts. Made from high grade cobalt.



Part#
MLT1 - Size: 1/8" - 1/2" 13 Step
MLT3 - Size: 1/4" - 3/4" 9 Step

MLT4 - Size: 3/16" - 7/8" 12 Step
MLT5 - Size: 7/16" - 1 1/8" 12 Step
MLT7 - Size: 1/4" - 1 1/2" 11 Step

THE GUIDE-O

The Guide-O allows you to enlarge holes utilizing a pilot bit the same size as the existing hole. By using a pilot bit that matches up to the existing hole, the hole cutter will stay centered while drilling the new, larger hole.

FEATURES:

- Fits most standard carbide and bi-metal hole cutters
- Kit includes 1/2", 3/4" and 1" pilot bits
- Made from carbon steel
- *Hole Cutter not included

Part#s

94050 - 1/2"
94075 - 3/4"
94100 - 1"
94200 - Guide-O Kit (1/2", 3/4", 1")
94225 - 2 1/2" Shaft Replacement
94226 - 2" Shaft Replacement
94050B - 1/2" Bi-Metal
94075B - 3/4" Bi-Metal
94100B - 1" Bi-Metal
94200B - Guide-O Bi-Metal Kit
(1/2", 3/4", 1")



SHARP POG OSCILLATING BLADE SHARPENER

Part# H91538

New
Product!



Quickly & effectively sharpens oscillating saw blades with the use of a hand drill.



High Performance CARBIDE TIPPED STEEL CUTTERS

Part#s

92HC4 - Steel Cutters 7/8"
92HC8 - Steel Cutters 1 1/8"
92HC14 - Steel Cutters 1 3/8"
92HC20 - Steel Cutters 1 3/4"
92HC22 - Steel Cutters 2"
92HC24 - Steel Cutters 2 1/2"
92KIT4 - 4-Pc Set: 7/8", 1-1/8", 1-3/8",
extra pilot bit
92KIT8 - 8-Pc Set: 7/8", 1-1/8", 1-3/8",
1-3/4", 2", 2-1/2", 2 extra pilot bits

FEATURES

- Ejector spring
- Tapered center drill
- Carbide tipping allows for repeated regrinding



SDS BITS

Part# 91814 - Masonry Drill Bit SDS 1/4"
Part# 91838 - Masonry Drill Bit SDS 3/8"





ELECTRICIAN'S KIT

4 OF THE MOST POPULAR STYLE MULTI-TOOL CUTTING BLADES



- Includes 2x Bi-Metal Blades and 2x Wood/Plastic Blades
- Cuts very quickly and neatly through wood & drywall
- Notch out joists and studs for cables & pipes
- Cuts out cabinetry for device boxes
- Remove baseboards for heaters and devices
- Creates minimal dust and disturbance
- Cuts easily in awkward access situations



The Electrician's Kit has a great selection of blades that any electrician needs and would use on a regular basis! Featuring coarse and fine-tooth blades as well as bi-metal blades, this kit has everything you need for almost all applications.

Compatible with Milwaukee, DeWalt, Makita, Bosch & More

Made In China

Part# H4EMK - Electrician's Kit (Four Blades)

Part# H32CJ1 - Japanese Tooth Blade - 32mm

Part# H44BM1 - Bi-Metal Blade - 44mm

Part# H63CJ1 - Japanese Tooth Blade - 63mm

Part# H44TN1 - Titanium Alloy Bi-Metal Blade - 44mm

WORK SMARTER NOT HARDER.

JUST ASK ANY MULTI-TOOL USER AND THEY ARE ALMOST GUARANTEED TO SAY "THEY DON'T KNOW HOW THEY GOT BY WITHOUT IT!"

Part# H44TN1



44MM ULTIMATE TITANIUM ALLOY BI-METAL SMART BLADE

The Titanium coated bi-metal blades are a great long-life blade solution. Made for cutting through wood AND nails and screws! The titanium coating helps reduce the heat build up on the blade, preserving the tooth design and maintaining a sharper blade for longer lasting cuts in wood!

Q-BIT: DRYWALL HOLE CUTTER



The Q-Bit is a revolutionary hole cutter that allows you to quickly cut out device holes. The Q-Bit is built to work with any standard oscillating tool



Q-BIT SAW SIZE CHART

PART #	BLADE SIZE						
42710	2 1/8" X 3 5/16"	X	X				
42740	2 1/4" X 3 5/8"			X			
42700	2 3/8" X 3 3/4"				X		
42720	3 3/4" X 4"					X	X

JAVELIN



Part# 95000

ALL IN ONE DRILLING EXTENSION

The Javelin is here to change the way we drill holes. Never get caught in a drilling extension jam again! This all-in-one extension drill can reach up to 10 feet. It comes with a fully adjustable hole cutter and auger bit extension kit. Just cut a 3/8" - 16 threaded rod to any length you need.

FEATURES:

- Holds drivers bits
- Holds nut drivers
- Holds drill bits
- Reaches up to 10 feet long



SWITCH BITS

INTERCHANGEABLE FLEX BITS

Rack-A-Tiers is proud to announce the Switch Bit line, our newest line of flexible installer bits. Quickly and easily customize your own set with these flexible bits featuring interchangeable heads and different shank lengths to fit any job.



ETS31621	SINGLE SHANK	3/16"	21"
ETS31633	SINGLE SHANK	3/16"	33"
ETS31654	SINGLE SHANK	3/16"	51"
ETS31669	SINGLE SHANK	3/16"	69"
ETS1421	SINGLE SHANK	1/4"	21"
ETS1433	SINGLE SHANK	1/4"	33"
ETS1454	SINGLE SHANK	1/4"	51"
ETS1469	SINGLE SHANK	1/4"	69"
ETB38316	INTERCHANGEABLE HEAD	3/8"	
ETB916316	INTERCHANGEABLE HEAD	9/16"	
ETB3414	INTERCHANGEABLE HEAD	3/4"	
ETC38S316	SWITCHBIT COMBO HEAD (3/8") & SHANK (3/16" x 33")		
ETC916S316	SWITCHBIT COMBO HEAD (9/16") & SHANK (3/16" x 33")		
ETC34S14	SWITCHBIT COMBO HEAD (3/4") & SHANK (1/4" x 33")		



QUATTRO FLEX AUGER BITS

Fast and aggressive self feed auger bits, welded to a flexible shaft. Cuts clean holes. Crossbored at both ends for easy wire pulling. Use for wood only.

Part# QTT3824	3/8"x24"	Part# QTT1224	1/2"x24"	Part# QTT91624	9/16"x24"	Part# QTT3424	3/4"x24"
Part# QTT3836	3/8"x36"	Part# QTT1236	1/2"x36"	Part# QTT91636	9/16"x36"	Part# QTT3436	3/4"x36"
Part# QTT3848	3/8"x48"	Part# QTT1248	1/2"x48"	Part# QTT91648	9/16"x48"	Part# QTT3448	3/4"x48"
Part# QTT3854	3/8"x54"	Part# QTT1254	1/2"x54"	Part# QTT91654	9/16"x54"	Part# QTT3454	3/4"x54"
Part# QTT3872	3/8"x72"	Part# QTT1272	1/2"x72"	Part# QTT91672	9/16"x72"	Part# QTT3472	3/4"x72"

More sizes available

HIGH SPEED STEEL

Superior quality M-2 High Speed Steel drill bit welded to a flexible shaft. Cuts both metal and wood. No need to worry about hidden nails or metal studs when drilling.

Part# FLX1424	1/4"x24"	Part# FLX3824	3/8"x24"	Part# FLX1224	1/2"x24"
Part# FLX1436	1/4"x36"	Part# FLX3836	3/8"x36"	Part# FLX1236	1/2"x36"
Part# FLX1448	1/4"x48"	Part# FLX3848	3/8"x48"	Part# FLX1248	1/2"x48"
Part# FLX1454	1/4"x54"	Part# FLX3854	3/8"x54"	Part# FLX1254	1/2"x54"
Part# FLX1472	1/4"x72"	Part# FLX3872	3/8"x72"	Part# FLX1272	1/2"x72"

GUIDE TOOL

Allows the Piranhabits to bend for drilling from outside the wall cavity.



Part# FIB-GUD



OverDRIVE™

FAST BORING AUGER BITS

The Over-Drive boring auger bits are specifically designed to not bog down your battery drill. Designed with a 1/4" chuck and available in 3/4" and 7/8".

Features:

- Available in 7" lengths
- 1/4" drill chuck
- Designed to put less strain on your battery drill

Part# AW34OD-3/4" x 7"
AW78OD-7/8" x 7"

AUGER FILE

DON'T THROW AWAY EXPENSIVE AUGER BITS!

Save those precious auger bits from being another dull tool lying around your shop or work truck. Save time and money by sharpening your bits from the comfort of your own home.

FEATURES:

- Top teeth for auger's main cutters
- Side teeth for sharpening tip

Part# AUFILE

18" AUGER BITS

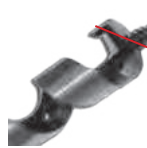
Part# AW3818 3/8"
Part# AW1218 1/2"
Part# AW11618 11/16"
Part# AW3418 3/4"
Part# AW7818 7/8"
Part# AW118 1"
Part# AW1418 1 1/4"

7 1/2" AUGER BITS

Part# AW3807 3/8"
Part# AW1207 1/2"
Part# AW11607 11/16"
Part# AW3407 3/4"
Part# AW7807 7/8"
Part# AW107 1"

NAIL CHIPPER & STANDARD CHIP AUGER

STANDARD SHIP AUGER



Precision ground cutting edge for fast cutting of clean holes in wood.

Burr-free lead screw for easy starts and pull-through without material build-up.

NAIL CHIPPER SHIP AUGER



TRI-CUT design with 3 precision ground edges for fast, smooth cutting without resistance.

REDUCES NAILS TO CHIPS without grabbing and leaves a clean hole with minimal "blowout."

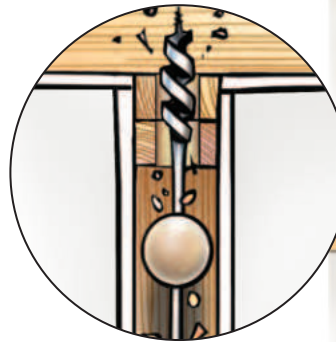
To order Tri-Cut Bits add a 'T' to the part #'s



AUGER SHAFT CENTERING TOOL

- No more bit walking, nail hitting, wall patching or carpet replacing
- Fits all 3/16" shaft auger bits
- Includes 1 each of 1-3/4" & 2-1/4" Balls (Drill Bits not included)

Part# BB3412



BEFORE

AFTER



FOLLOW US ON



WWW.RACK-A-TIERS.COM

SALES@RACK-A-TIERS.COM

TOLL FREE: 1 (888) 939-9991

NO MORE MESS EASY DISPOSAL OF DEBRIS WORKS WITH HOLE SAW UP TO 8" AND DRILL BITS TOO!

Driller's Dustbowl

THE FLEXIBLE DRILLER'S DUST BOWL COMPRESSES AGAINST THE WORK SURFACE AND TRAPS ALL DUST AND DEBRIS AS YOU DRILL. THE BOWL FITS YOUR DRILL AND HOLE SAW WITHOUT ANY ADJUSTMENTS NEEDED.

Mfg Note:

You may enjoy a face full of drywall dust, but your customers might not. Put an end to "unprotected hole sawing" and wrap up with the Driller's Dust Bowl.



Part# 48000

Driller's Dustbowl PRO

NOW AVAILABLE WITH A VACUUM PORT FOR THOSE SUPER DUSTY JOBS.

- The same great Dust Bowl now with a vacuum port for those super dusty jobs
- No more mess
- Works easily with your hole saw



Part# 48020

HOLE-IN-ONE MULTI-FUNCTION HOLE CUTTER

SAVE YOUR LUNGS! CUTTING HOLES WITHOUT PROTECTION CAN BE HAZARDOUS TO YOUR HEALTH.

PROTECT YOU AND YOUR CREW WITH THE HOLE-IN-ONE.



Part No. 90200 - 1 7/8" to 9"
Part No. 90300 - 1 7/8" to 12"
Part No. 90400 - 1 7/8" to 17"

CUTS THROUGH:

- Plywood
- Fiber cement board
- Sheetrock
- Up to 20 GA. sheet metal
- Fiberglass
- Aluminum

PILOT BIT

Part# 90199



CARBIDE REPLACEMENT BLADES

Part# 90-VT



HSS REPLACEMENT BLADES

Part# 90-VH

DRYWALL TRAPPER

Part# 48400



The Drywall Trapper was created to save time and money for AV & electrical contractors. Cutting into a drywall ceiling is an extremely messy task. The Drywall Trapper has changed all of that. Now you can be in and out of retrofit projects in a fraction of the time and stay clean and tidy.

- Traps the fine particles and large pieces while working overhead.
- Heavy duty vinyl provides a clear viewport to the cutting area.
- Large enough to cut holes for large speakers and light fixtures.
- Rugged construction for the most challenging environments.

Width: 20.5cm (8.07inch) / Height 14cm (5.51inch) / Base: 7.5cm (2.95in)



CHIP CATCHER

The Chip Catcher adheres to metal surfaces using rare earth magnets. Metal shavings are attracted to the magnets embedded in the cylinder walls. Makes for easy clean up!



- Increases safety
- Magnet base attaches to metal surfaces & catches metal shavings
- Quick & convenient clean-up

Part# 84100



***NOT TO BE USED ON LIVE PANELS**

DIRT BAG

Electrical Safety Drilling Tool

The Dirt Bag is specifically designed to eliminate metal shavings from spreading throughout a panel while drilling. Utilizing extra strong rare earth magnets in the frame, the Dirt Bag clings to the metal surface to catch all debris caused by drilling.

- Magnet in base of bag attracts filings
 - Increases safety
- Easily attaches to metal surfaces
- Made from non-conductive material
- Removable magnet included in bag pocket
 - Fits most panels



Part# 84000

***NOT TO BE USED ON LIVE PANELS**

PLUGFONES

WHERE EAR PLUGS MEET EARBUDS

AT WORK: Ear plugs certified to the ANSI noise reduction standards up to 30 dB. Head phone volume limiting technology that keeps the volume level of the Plugfones speakers at or below 82 dB per OSHA standards. Built with Tuff Cord tear resistant wires.

AT PLAY: Wireless Bluetooth battery lasts up to 12 hours of play, USB rechargeable. Comfortable design that won't fall out like regular ear buds.

MFG NOTE: Replaceable tips available for all sets in 10 or 100 packs, please visit rack-a-tiers.com for more details.



Compliant with ANSI S3.19-1974 Noise Reduction Standards
 WorkSafe: Volume Limiting Technology - Limits audio input to 85dB, enhances situational awareness
 Bluetooth wireless technology
 Never out battery - Up to 12 Hours of Play
 Fast Charge - 5 Minute Charge = 2 Hours of Play
 ISO Talk - Noise Isolating Mic and Quick Draw Easy Access Control
 TuffCord - Tear Resistant Cables
 Noise reduction Rating of 26dB with included Silicone Plugs
 Premium sound quality

INDUSTRIAL GRADE WIRED & WIRELESS BLUETOOTH PROTECTIVE EARPLUGS & HEADPHONES ALL-IN-ONE.

Part# PIP-BE	Black/Green	Protector- wired earphones, replaceable foam/silicone tips
Part# PIPP-BE	Black/Green	Protector Plus - wired earphones, mic, replaceable tips
Part# PIPP-UY	Blue/Yellow	Protector Plus VL - 82db Volume Limited, wired earphones, mic, replaceable tips
Part# PIF-BE	Black/Green	Freedom - Bluetooth wireless earphones, mic, replaceable tips
Part# PIF-UY	Blue/Yellow	Freedom VL - Bluetooth 82db Volume Limited, mic, replaceable tips

The Original ELECTRICAL REFERENCE BOOKS EVERYONE NEEDS AN UGLY'S ON THE JOB REFERENCE

- Mathematical formulas
- National electrical code
- Wiring configurations
- Conduit bending
- Voltage drops
- Life saving first aid procedures
- Much, much more

Part#

- 73214 - Safety & NFPA 70E
- 73215 - Electrical References
- 73216 - Motors & Controls
- 73218 - Conduit bending



PANEL BUDDY

Knockout System

Tired of trying to remove knockouts? Let the Panel Buddy take care of them for you. This simple but genius tool removes knockouts in half the time, with half the effort.

FEATURES:

- Kit removes knockouts on Electrical, Security, Alarm, and Datacom Panels
- Works with lipped and non-lipped panels



Part# 7WBK100

NUT BLASTER

UNIVERSAL WIRE CONNECTORS

- Fast, easy installation
- Prevents sore fingers and cramping hands
- Available in two sizes

Part#

72101 - XL

(Fits all brands yellow, tan & red twist on wire connectors)

72102 - XXL

(Fits all brands large grey & blue twist on wire connectors)



NUT BLASTER

In-Store Display

Contact us to order this counter display. Other counter displays also available.



FOLLOW US ON



WWW.RACK-A-TIERS.COM

SALES@RACK-A-TIERS.COM

TOLL FREE: 1 (888) 939-9991

MAG DADDY

MAGNETIC FASTENERS



MAG DADDY MAGNETIC FASTENERS UTILIZE ULTRA-STRONG MAGNETS TO STRAP WIRE AND CABLE. MAG DADDY MAGNETS WILL STAY ATTACHED THROUGH OIL, GREASE, PAINT OR DIRT. A VARIETY OF CONFIGURATIONS ARE AVAILABLE TO SUIT YOUR NEEDS.

CABLE HOLDERS



Magnetic Cable Holder (10 Pack)
 Part# RM050BK - 1/2" Black
 Part# RM050WT - 1/2" White
 Part# RM075BK - 3/4" Black
 Part# RM075WT - 3/4" White
 Part# RM100BK - 1" Black
 Part# RM100WT - 1" White

CABLE TIE MOUNTS



Magnetic Cable Tie Mount (10 Pack)
 Holds Standard Zip Ties
 Part# RM110BK - 10 lb Black
 Part# RM110WT - 10 lb White
 Part# RM115BK - 15 lb Black
 Part# RM115WT - 15 lb White

MAGNET MOUNT



Magnet Mounts (10 Pack)
 Part# RM164SL - 19 mm/16 lb Silver
 Part# RM265SL - 23 mm/26 lb Silver
 Part# RM266SL - 26 mm 26 lb Silver



Magnetic Clamp (10 Pack)
 Magnetic Strength: 15 lbs.
 Part# RM051BK - 1/2" Black



Female Magnet Mount
 1/4-20
 Part# RM420FM



3/4" Wide Cable Mount (10 Pack)
 15 lbs Black
 Part# RM215BK



Mini Magnet Cable Tie Mount (10 Pack)
 Color: Black
 Magnetic Strength: 5 lbs
 Part# RM020BK



Top J-Hook (10 Pack)
 360° Rotation
 Part# RMJ075T - 3/4"
 Part# RMJ131T - 1 5/16"
 Part# RMJ200T - 2"



Side J-Hook (10 Pack)
 360° Rotation
 Part# RMJ075S - 3/4"
 Part# RMJ131S - 1 5/16"
 Part# RMJ200S - 2"



Cable Hanger
 Cable Hanging Tool
 Part# RM300HT



Magnetic Bridling Ring
 Part# RM125BR - 1.25" 1/4-20
 Part# RM200BR - 2" 1/4-20



1 x 7/16" Zip-Tie Pipe Mount
 Part # RM1716BK

VAN MAGNETS

Got a disorganized van? Snap some Van Magnets into place to hang tools, material, etc. to keep your vehicle nice and tidy.



*All Van Magnets Include carabiner



10 lbs 4 Pack
 Part# RV010



25 lbs 3 Pack
 Part# RV025



50 lbs 2 Pack
 Part# RV050



CABLE MOUNTS

The Rack-A-Tiers Saddle Support is a saddle where you put a screw through and strap wire with tie wraps. Let's be honest, Rack-A-Tiers didn't reinvent the wheel with this one, but we did reinvent the price.

Another exciting, already available product we're adding are the 4-way adhesive cable tie mounts in 2 different sizes. You know what these are for. Buy them from us if you would like to.

Part# RC215WT

Cable Tie Saddle Support White
1.5" (100 pcs)

Part# RC410WT

Cable Tie Mount 4-Way Adhesive White
1" (100 pcs)

Part# RC4150WT

Cable Tie Mount 4-Way Adhesive White
1 1/2" (100 pcs)



Tie Lips

Features

- Keeps your ties in place
- Quick and easy dispensing
- Holds different types and sizes
- Includes handy belt clip

Spend more time installing and less time picking up. The Tie Lips will hold your cable ties conveniently on your belt.



Part# 43800

NEW!



H/2 homer helper

Features:

- Quickly and easily supports multiple electrical cables.
- Hold up to 24 cables with one support.
- Greatly reduces labor time.
- Innovative design allows multiple cables to be installed in confined areas with ease.
- Rigid plastic injection molded
- US Patent Pending
- Made in the USA

H2 Homer Helper's are intended to support multiple NM-B, MC, and Low Voltage cables in electrical home runs. They will greatly reduce labor time and eliminate the use or need for staples.



Part# H2024

Width: 20.5cm
Height: 14cm
Base: 7.5cm



FILLERS & CONNECTORS

KO KILLERS: PLASTIC KNOCKOUT FILLERS

Fits thin (1/32") and thick (1/8") wall thickness.

Features:

- No tools required
- Snap in and out with ease
- Non-conductive, safer



Part# KOK50 - 1/2" Filler (50/bag)
 Part# KOK75 - 3/4" Filler (50/bag)
 Part# KOK100 - 1" Filler (25/bag)
 Part# KOK125 - 1 1/4" Filler (25/bag)
 Part# KOK150 - 1 1/2" Filler (25/bag)
 Part# KOK200 - 2" Filler (25/bag)
 Part# KOK999 - Assorted Fillers Kit (25/bag)



RAT 500

Rapid Fire NMSC connector (100 Pack)

Suitable for all 1/2" knockouts
 Fast and Easy. No tools required

Features:

- 100/bag
- Single cables
- Two cables
- Install from outside

RAT 750

Rapid Fire NMSC connector (50 pack)

Suitable for all 3/4" knockouts
 Fast and Easy. No tools required

Features:

- 50/bag
- Single cables
- Install from outside

Part#

RAT500 1/2" Connector

RAT750 3/4" Connector



RAT750 - 3/4"	Single Cable:	8/3, 6/3
RAT500 & TT500 - 1/2"	Single Cable:	14/2, 14/3, 12/2, 12/3, 10/2, 10/3
	Two Cables:	14/2, 14/3, 12/2

TT500

NMSC Two Way 1/2" Connector (100 Pack)

Installs from inside and outside the box

Features:

- 100/bag
- Single cables
- Two cables

Part#

TT500



STUD BUDDIES

(100 Pack)

Why Square Bushing? 70%
 More cross sectional area!
 More cables, easier pulls.

- One piece
- One hand installation
- Fits all standard steel studs & punches
- Fire rated V.O.
- Faster, easier to use

Part#

SB220 - ROUND

SB240 - SQUARE



CROWS FEET



3/8" Metal Flange

Crow's Feet are a galvanized steel ceiling flange designed to accommodate 3/8" threaded rod.

Part# SCF38



Part#

LJ50R - 1/2" (30 pack)

LJ100R - 1" (15 Pack)



LEVEL JACK

HOW DOES IT WORK?

Alignment tabs reach across wood/metal studs to level low voltage outlets with A.C. boxes.

NO TAPE MEASURE • NO LEVEL REQUIRED

Available in 1/2" and 1" rise

If you're fussy about your rough-in layout, the Level Jack makes life easy. If you're not, no one will notice because you can't screw up with the Level Jack.

Just clip it on to the AC box and screw it down. No level, no tape measure, no special boxes, no special fittings required. Level Jacks fit most AC boxes.



FOLLOW US ON



WWW.RACK-A-TIERS.COM

SALES@RACK-A-TIERS.COM

TOLL FREE: 1 (888) 939-9991

SHIM MY BOX



Part# S1203
12" Length Tubes for Electrical Switches (3/bag)

Tired of twisting wire into a coil or trying to track down washers to shim your plug or switch? With the Shim My Box all you have to do is cut the length you need from this straw like piece.



AIRCRAFT CABLE & WIRE CRIMPS

- Available in 500 and 1,000 Feet.
- No need to go anywhere else - Buy it from us!
- Diameter of cable: 1/16"

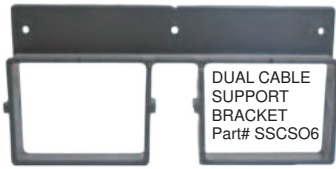
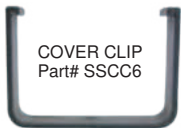
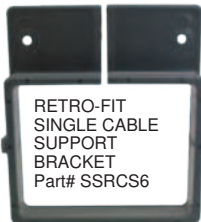
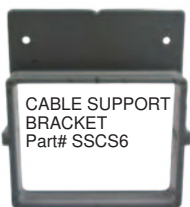
Part# SC500
Aircraft Seismic Cable 500'
Part# SC1000
Aircraft Seismic Cable 1000'
Part# SCC116
Aircraft Seismic Cable Crimps (100 pack)



NON-METALLIC CABLE SUPPORT SYSTEM

QUICK & EASY INSTALLATION

- No structural damage from drilling
- No gluing
- Easily add cables
- Great for new construction
- Add circuits when needed
- Perfect for remodelling
- No more expensive drill bits
- Reduce home run length up to 30%



8 AND 10 FOOT LENGTHS
AVAILABLE!



MAXIMUM NUMBER OF INSTALLED CABLES ALLOWED

CABLE TYPES NMB-UF-SEU	
CABLE WIRE SIZES	MAX NUMBER OF INSTALLED CABLES
14-2	38
12-2	30
10-2	22
8-2	14
6-2	10
4-2	5
2-2	4
2/0-2	2
4/0-2	2

CABLE TYPES NMB-UF-SEU	
CABLE WIRE SIZES	MAX NUMBER OF INSTALLED CABLES
14-3	29
12-3	23
10-3	16
8-3	10
6-3	6
4-3	3
2-3	2
2/0-3	1
4/0-3	1

Note: All cables listed contain an equipment grounding conductor that is bare and covered with the cable sheath. Passed UL temperature test with 80% load of the over-current device. Combinations of cables can be used not exceeding 40% maximum fill. UL Listed for one and two family dwellings.



ELASCO PRODUCTS



EXTREME CABLE PROTECTION

DURABLE

LONG LASTING

LIGHTWEIGHT

EASY TO USE

DROP OVER COLLECTION

Elasco Drop Overs are quick and easy to install, protecting everything from small wires to large pipes. These cable management Drop Overs come with a single channel, but can accommodate a multitude of pipes or wires within their protection.



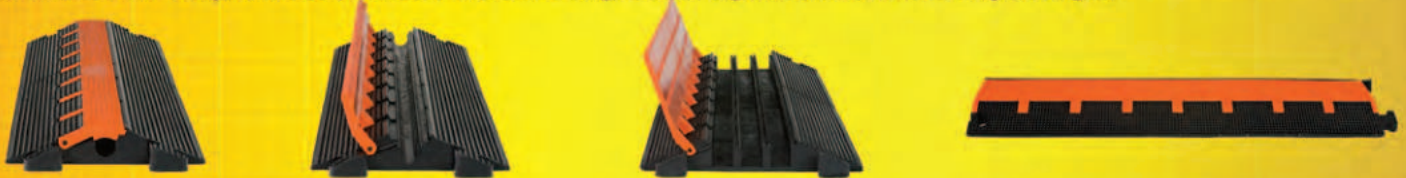
GLOW COLLECTION

Elasco now offers the most visible glow in the dark cable protectors in the industry.



LITEGUARD COLLECTION

Commonly used in vehicle or pedestrian settings, the LiteGuard collection provides invaluable protection. Although smaller in size and weight, these products are still designed for significant load bearing strength.



ULTRAGUARD COLLECTION

The Ultraguard collection offers an extra low profile and push buttons attached to lid, ensuring extra lid closure and cable security.



HEAVY DUTY COLLECTION

The Heavy Duty collection has been protecting cables and wires for over 25 years and is available in one, two, three, and five channel cable guards. Offering extra load bearing capacity, compared to the lighter duty - the MightyGuard collection will stand the test of time.



XTREME DUTY COLLECTION

The XtremeGuard Collection offers multiple channels able to accommodate 4" size hoses, cables, and pipes. With bonus 2" size channels, this patent pending design is the first and only product like it on the market, able to withstand almost any load capacity requirement.



**FOR FULL SIZING CHARTS, PART NUMBERS AND MORE
INFORMATION PLEASE VISIT RACK-A-TIERS.COM**

ULTRA- SIDEWINDER[®] CABLE PROTECTION SYSTEMS



FEATURES:

- ARTICULATION PIECES OFFER FLEXIBLE DESIGN - CURVES, CORNERS & S-CURVES ARE EASILY MADE WHILE MAINTAINING A COMPLETELY FLAT PROFILE.
- SIMPLE INSTALLATION. NO TOOLS REQUIRED.
- AVAILABLE IN BLACK, YELLOW, BROWN, AND GRAY.
- FULLY-CUSTOMIZABLE LENGTH - FROM 4.5" TO AN UNLIMITED LENGTH.

Cavity Size: 3/4" W x 3/8" H

For part numbers visit
www.Rack-A-Tiers.com

TEMPORARY CABLE GUARD

5' LONG X 4.5" WIDE X 1.25" HIGH

Accommodates cable up to .75" in diameter.
Withstands heavy vehicle traffic.
Part# TCG5

5' LONG X 10.5" WIDE X 2.75" HIGH

Accommodates a cable/bundle up to 2.25".
Withstands heavy vehicle traffic.
Part# TPG5

The Temporary Cable Guard withstands heavy vehicle traffic without damaging cable. Easily anchored with concrete screws if needed. The Temporary Cable Guard helps you restore services quickly by allowing you to run temporary cables over most any surface. It reduces truck rolls and eliminates downtime due to cable cuts, storm damage, traffic or roadway activities.

cable
clear

CableClear is a patented new cable management product for wall mounted TV's enables you to quickly and easily hide eyesore TV cables inside the stud wall without any special DIY skills. Add cables seamlessly at any point and time after the CableClear kit is installed. CableClear creates a 50mm (2") conduit inside the wall cavity so that you can fish the cable through and hide them completely. There is no damage to the wall during cable installation so there's no repairing or re-painting afterwards.

FEATURES:

- Kit includes: elbow wall clips, hose, hole saw, plumb bob, and nose cone
- Designed for all stud walls 70mm (2 3/4") and thicker
- Fits plaster/drywall up to 13mm (1/2") thick
- Hose length is fully adjustable
- Additional cables can be added later
- Creates a sealed duct
- Components comply with UL 94V-0 plastics flammability standards

CC001 - Cable Clear Kit
CC002 - Cable Clear Extension Kit
CC003 - Replacement Part - Elbow Fitting
CC004 - Replacement Part - Hose w/ Connectors
CC005 - Replacement Part - Hole Saw
CC006 - Replacement Part - Plumb Bob
CC007 - Replacement Part - Insulation Cone

New
Product!



EFERGY ELITE Classic Wireless Energy Monitor



Save up to 15% on your electricity bill through greater awareness!



See it In Action!

The Elite Classic is our latest and renewed version of our Elite Wireless Power Monitor. It updates every 10 seconds so you can instantly see the impact of turning a light on or off, boiling the kettle or using your tumble dryer. It has an innovative memory function that allows you to see how much you have used today, yesterday and in the last week or month. The Elite Monitor also displays your daily average so you can see when you are using more electricity than normal and see how your average usage reduces as you change the way you do things - Great for sub panels to monitor tenant energy use.



Part# EF003

Accessories

200A Current Sensor

Additional sensor for measuring current up to 200 amperes. Works with the elite or e2. Perfect for whole house applications where a 200 ampere service is installed. Split core design easily fits around wire sizes up to #4/0 AWG without breaking connections.



Part# EF012

Hub Online Accessory Kit

Monitor your home energy use online in real-time engage hub accessory kit. Online platform **FREE** of charge with no subscription or monthly fees Access your energy data anytime, from anywhere



Part# EFH01

EZ GENERATOR SWITCH



EZ Generator Switch is the most affordable & efficient generator connecting manual transfer switch on the market. We are the only company in both the United States & Canada that builds switches that are matched to your exact generator. Our switches are safe and code compliant.



Part# 99215

EFFICIENT

Our switches energize only essential circuits such as; heating circuits, kitchen circuits, lighting circuits, hot water systems, sump pumps and general outlets. Because you are only energizing essential circuits the need for large inefficient generators are not needed. More user friendly, fuel economical generators can be used.

AFFORDABLE

Because we have designed an essential circuit transfer switch that only handles the items you need during power outages we are able to provide you with the lowest cost manual transfer switch on the market. By only powering essential items during power outages, there is no need for larger, more expensive systems which also require larger generators, expensive systems which also require large generators. We conform to CAN/CSA Std. C22.2 #14 and UL standard 1640.

THE TOP HAT

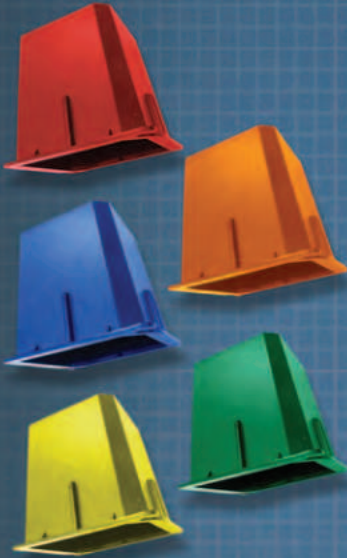


PART# TC1400
*PACKAGED IN 50 & 5 PACKS

As a simple box cover, the Top Hat is used instead of a blank cover with several important advantages. It allows installers to leave wires that enter the junction boxes extending straight. With the depth of the Top Hat there is no need to coil wires and stuff them into the smaller parts of the junction box. This will save time during installation and more importantly during troubleshooting. Additionally, this high volume cover makes it easier to access the contents of any junction box.

FEATURES

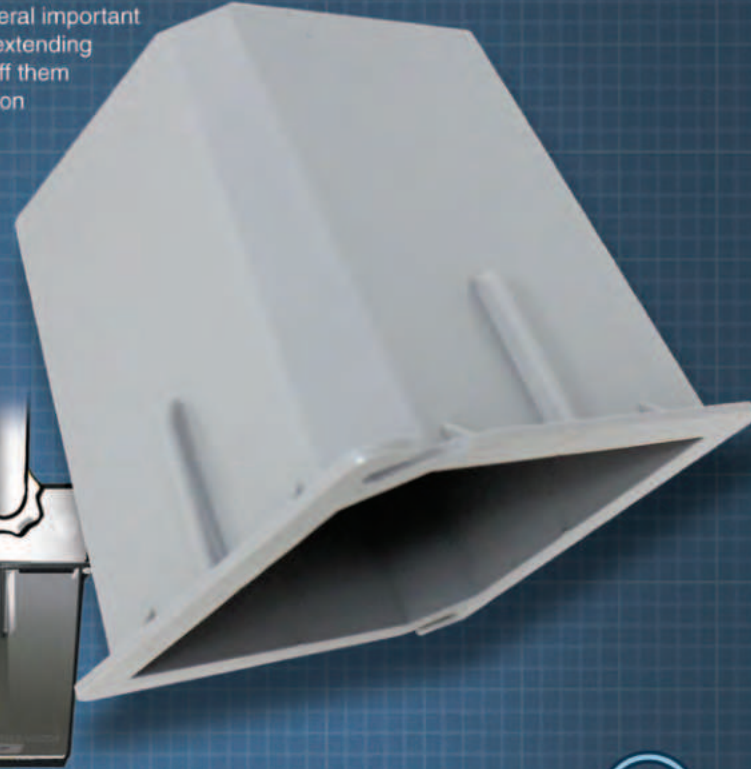
- ULC Approved
- Adds 35.8 cubic inches to the existing junction box
- Plenum Rated
- Patent Pending



Now Available For special order in multiple colors for various applications. Contact **Rack-A-Tiers** for more details.



See it In Action!



BEFORE

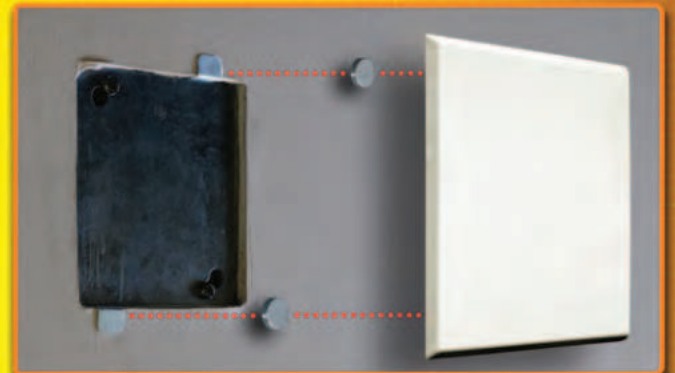


AFTER

6.5 INCH PLATE

FEATURES:

- Installs in seconds with rare earth magnets - snaps in place to metal clips (included)
- White decorative plate covers 5-1/2" square hole or electrical box
- Can also be used to cover a round hole with up to a 5-1/2" diameter
- Visually appealing white decorative plate - no need to paint metal covers



Part# D612

Rack-A-Tiers

COMPLETE LINE OF Driver Bits



PART#	DESCRIPTION	LENGTH	PART#	DESCRIPTION	LENGTH
70226BR	Impact Bit, Double-Ended, Phillips #2 & Robertson #2 (Blue/Red)	6"	70430P	Square #4	3"
70224BR	Impact Bit, Double-Ended, Phillips #2 & Robertson #2 (Blue/Red)	4"	70360BK	Robertson Square #3 (Black)	6"
70216RG	Impact Bit, Double-Ended, Robertson #2 & #1 (Red/Green)	6"	70340BK	Robertson Square #3 (Black)	4"
70214RG	Impact Bit, Double-Ended, Robertson #2 & #1 (Red/Green)	4"	70260R	Robertson Square #2 (Red)	6"
7032RI	Robertson Impact Bit, Square #3 (Black)	2"	70240R	Robertson Square #2 (Red)	4"
7031RI	Robertson Impact Bit, Square #3 (Black)	1"	70230R	Robertson Square #2 (Red)	3"
70266R	Robertson Impact Bit, Robertson #2 (Red)	6"	70220R	Robertson Square #2 (Red)	2"
70244R	Robertson Impact Bit, Robertson #2 (Red)	4"	70160G	Robertson Square #1 (Green)	6"
7022RI	Robertson Impact Bit, Square #2 (Red)	2"	70140G	Robertson Square #1 (Green)	4"
7021RI	Robertson Impact Bit, Square #2 (Red)	1"	70130G	Robertson Square #1 (Green)	3"
70166R	Robertson Impact Bit, Robertson #1 (Green)	6"	70120G	Robertson Square #1 (Green)	2"
70144R	Robertson Impact Bit, Robertson #1 (Green)	4"	70040Y	Square #0 (Yellow)	4"
7012RI	Robertson Impact Bit, Square #1 (Green)	2"	70030Y	Robertson Square #0 (Yellow)	3"
7011RI	Robertson Impact Bit, Square #1 (Green)	1"	70261BL	Phillips #2 (Blue)	6"
70266B	Impact Bit, Phillips #2 (Blue)	6"	70241BL	Phillips #2 (Blue)	4"
70244B	Impact Bit, Phillips #2 (Blue)	4"	70141LB	Phillips #1 (Light Blue)	4"
70166B	Impact Bit, Phillips #1 (Light Blue)	6"	72126GR	Drive Bit, Double-Ended, Square #1 & #2 (Red/Green)	6"
70144B	Impact Bit, Phillips #1 (Light Blue)	4"	72124GR	Drive Bit, Double-Ended, Square #1 & #2 (Red/Green)	4"
7022PI	Impact Bit, Phillips #2	2"	72204BY	Double-Ended, Phillips #2 & 1/4" Slot Bit (Blue/Yellow)	4"
7021PI	Impact Bit, Phillips #2	1"	72133P	LockHard, Square #1 With Wings	3"
7012PI	Impact Bit, Phillips #1	2"			
7011PI	Impact Bit, Phillips #1	1"			

Racky Bits Counter Display

Contact us to get a counter display for your Racky Bits. These compact displays are available in two sizes to best suit your needs. Both displays include an anti-theft lid.

12 Slot: Part# 70SKE12

24 Slot: Part# 70SKE24

PART# DESCRIPTION

LENGTH



70961BK Hex 1/2" (Black)

6"



70931BK Hex 1/2" (Black)

2.5"



70861BR Hex 7/16" (Brown)

6"



70831BR Hex 7/16" (Brown)

2.5"



70761BL Hex 3/8" (Blue)

6"



70731BL Hex 3/8" (Blue)

2.5"



70661Y Hex 5/16" (Yellow)

6"



70631Y Hex 5/16" (Yellow)

2.5"



70561R Hex 1/4" (Red)

6"



70531R Hex 1/4" (Red)

2.5"



70466RY Malco Dual-Sided Magnetic Driver, Hex 1/4" & 5/16"

6"



70464RY Malco Dual-Sided Magnetic Driver, Hex 1/4" & 5/16"

4"



70462RY Malco Dual-Sided Magnetic Driver, Hex 1/4" & 5/16"

2"



72564RY Double-Ended, Hex 1/4" & 5/16 (Red/Yellow)

4"

PART# DESCRIPTION



72000 Magnetic Bit Holder



72030 Wood Lag Driver Bit



72022 Magnetic Sleeve

IMPACT DRIVER SOCKET ADAPTOR SET



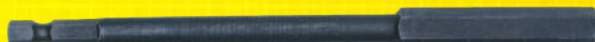
PART# DESCRIPTION LEN.

70325 1/4", 3/8", 1/2" 2.5"

ALLEN HEAD DRIVER BIT KIT

These high quality hex key allen bits are 6" long for increased versatility. Also included in the kit is a 3/8" socket adapter.

The 1/4" shank allows you to use any standard drill or quick change chuck.



PART# DESCRIPTION

72600 Allen Head Driver Bit Kit



FOLLOW US



RACK-A-TIERS.COM

SALES@RACK-A-TIERS.COM

TOLL FREE: 1 (888) 939-9991

MALCO DUAL-SIDED MAGNETIC HEX DRIVERS



Quickly change between 1/4in. and 5/16in. hex sizes with Malco's unique, exclusive, dual-sided magnetic hex drivers. The reversible hex socket fits over a 1/4-inch magnet-tipped, ball locking hex shaft, and can be quickly reversed to change sizes. Eliminate troublesome buildup of metal shavings in the hex tip with the "Easy Clean Magnet". Just swipe with a glove or shop towel to clear any metal shavings. Tested torque of the reversible hex chuck driver design is equal to one-piece drivers.

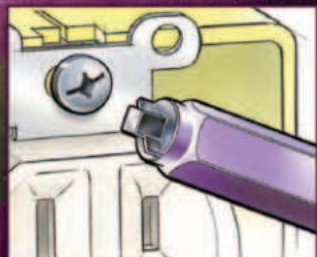


Part#
70462RY - 2" Bit
70464RY - 4" Bit
70466RY - 6" Bit

lockHARD bit

The lockHard bit has two strategically placed wings on the sides of its square bit end. This allows it to lock into place and makes sure you NEVER strip another screw

PART#
72133P - 3" BULK BIT
72133PP1 - 3" PACKAGED BIT



HOLDSaBIT

Every moment during a project that you spend looking for the right tool is wasted time and results in frustration and bad decisions. The ingenious HOLDSaBIT slips on or off a drill in seconds. Simply pull one loop over the front of the drill and pull the second loop to the back of the drill. The HOLDSaBIT will hold any 1/4" hex shank item as well as pencils, nut drivers and hex shank drill bits. Tips and bits are easily inserted and removed.



FEATURES:

- Sold in a kit with bits or sold separately.
- Hold any 1/4" hex shank items as well as pencils, drill bits, etc.
- 4 channels to fit a variety of length bits

Part# 70000 (Bits Not Included)

Part# 700.kit (includes 1-70140G, 1-70240R, 1-70241BL, 1-70531R, 1-70531Y & 1-72133P)



Reemer Bit

Double-Ended #2 Phillips & #2 Robertson Pipe Reaming Bit

- Reams all sizes of conduit
- Tighten your connectors and coupling
- Fits Power Drill chucks and quick release

SHARP ENOUGH EDGES TO
DO THE REAMING BUT WON'T
CUT UP YOUR FINGERS!



Part# 72422RB



FOLLOW US



RACK-A-TIERS.COM

SALES@RACK-A-TIERS.COM

TOLL FREE: 1 (888) 939-9991



PICQUIC®



SIXPAC *plus*

- 7 - 3" LENGTH, 1/4" HEX POWERBITS
- 11.5" TOTAL LENGTH
PART# P88001



DASH 7

- 7 - 2" LENGTH, 1/4" HEX POWERBITS
- COMES IN 4 BRIGHT NEW COLORS
PART# P05001



STUBBY

- SOLID, COMFORTABLE, HIGH TORQUE HANDLE
- 6 HIGH QUALITY 1.3" LENGTH INSERT BITS
- IDEAL FOR WORK IN CLOSE QUARTERS
PART# P91000



Robertson®



GREEN ROBBY

#5-6-7 SQUARE DRIVE
PART# SD110G



RED ROBBY

#8-9-10 SQUARE DRIVE
PART# SD210R



BLACK ROBBY

#12-13-14 SQUARE DRIVE
PART# SD310BK



DEMAGNETIZER

MAGNETIZES OR DEMAGNETIZES DRIVER BITS,
TOOLS AND SMALL STEEL PARTS INSTANTLY!
Part# 70988

MAGNETIC BIT HOLDER



QUICK CHANGE MAGNETIC BIT HOLDER
PART# 72000



proGrabit DAMAGED SCREW REMOVER

Part# 72120

- WORKS ON JAGGED, UNEVEN AND ROUGH BREAKS
- SELF CENTERING TIP, NO WALKING
- COMPATIBLE WITH QUICK CONNECT CHUCK SYSTEMS
- EASY TO USE WITH 3/8" VARIABLE SPEED REVERSIBLE DRILL
- EXTRACTS SCREWS UP TO 4 INCHES



ROLGEAR®

MULTIBIT RATCHET SCREWDRIVER / 15 TIPS (DOUBLE ENDED BITS)

- Slotted: 3/16", 1/4"
- Square: 1, 2, 3, 4
- Phillips: 1, 2, 3, 4
- Torx: 10, 15, 20, 25
- Smooth and silent ratcheting
- Single-handed ratchet adjustments from forward, locked, & backward
- Ergonomic, cushion comfort handle
- Magnetic components for drop-safe bit changing
- Stainless steel bit adapter

PART# SDR14





Industrial

CORD CONNECTOR

Connect and Protect

A construction quality Cord Connection System for protecting your corded power tools and extension cords. The Industrial Cord Connector extends cable life and adds convenience to all your corded tools and extension cords. Simply add a Cord Stop to the ends of both the corded tool and the extension cord, cover the Stops with the Barrel Cover and cinch the straps tight. The snug Barrel Cover protects your electrical connection from the outdoor elements and job site knocks and bangs. The Industrial Cord Connector holds your cords tight and eliminates time wasting disconnects and puts an end to cord wear from knotting and tying.

THE INDUSTRIAL CORD CONNECTOR PROVIDES A SAFE AND EASIER WAY TO CONNECT YOUR ELECTRICAL CORDS TOGETHER

- Protects against arc flashing
- Eliminates the need to knot or tape cords together
- Prevents frustrating cord disconnects and ground plugs from breaking off
- Protects your electrical connections from outdoor elements

Part# 97100 – Industrial Cord Connector Set (barrel & cord stops)

Part# 97110 – Cord Stop #10

Part# 97112 – Cord Stop #12

Part# 97114 – Cord Stop #14

Part# 97116 – Cord Stop #16

Part# 97120 – Barrel Only



PROLOCK

For Secure & Safe Connections

Single End Extension Cord

- Molded ProLock connectors will not pull away from the cord body; offers extra water resistance.
- Automatic locking feature: insert male end into Pro Lock connector and push together to lock. Pull collar down to unlock.
- High impact polycarbonate on both housing & collar guarantees hard service, with extra heavy duty use.
- Lighted Amber Power Check plug & ProLock connector indicates power is running through the cord and connector.
- Special cold weather (-58°F) PVC jacket guarantees flexibility in temperatures well below freezing



Part#
98000 - ProLock Cord Connector Black
98050 - ProLock 50' 12/3 Extension Cord
98100 - ProLock 100' 12/3 Extension Cord



Extension Cord Connector

- Specially designed automatic locking feature: insert male blades and pins into the Pro Lock connector and push together to lock; pull the collar down to unlock.
- We use high impact polycarbonate on both housing & collar to guarantee hard service, extra-heavy duty use.
- Temperature Range: -40°F to +160°F.
- Pull Strength: 80 Lbs horizontally or vertically.

Our patented ProLock mechanical connector was designed to prevent all extension cords with standard straight blade 15A-125V plugs and connectors from pulling apart. It eliminates the problem of accidental disconnects that result in unnecessary power loss. Fits all standard 15A-125V U-Ground ends.

ATTENTION ALL WHOLESALERS!

SPRUCE UP YOUR SHOWROOM WITH A GREAT LOOKING DISPLAY FROM **RACK-A-TIERS**



24" x 48" Paper wall panels
Part# WALLPAPER-BK
(24"x 48")



*Tools Not Included



Pouch Display
Part# MINI-DISPLAY-C



Metal Floor Display
Part# METAL-FLOOR-DISPLAY

MAGPIE

Bilateral Laser Measurer



SIGN UP AT RACK-A-TIERS.COM/MAGPIE
TO BE THE FIRST IN LINE TO GET
YOUR HANDS ON THIS AMAZING TOOL!

PART #45600

FIND THE CENTER OF A ROOM FOR EASY LIGHT INSTALLATION

7FT



Before



9FT



FOLLOW US ON



WWW.RACK-A-TIERS.COM

SALES@RACK-A-TIERS.COM

TOLL FREE: 1 (888) 939-9991

RACK MARKET

**AN ARRAY OF QUALITY
GOODS SOLD AT KILLER PRICES**

**LOOK GOOD IN
RACK-A-TIERS
GEAR**

**SORRY, NO
PINSTRIPE SUITS
AVAILABLE**

VISIT: STORE.RACK-A-TIERS.COM

INVENTOR'S CORNER



Find yourself flipping through the Rack-A-Tiers catalog wishing you had thought of that tool, or frustrated that you thought of that idea first?

Well, here's your chance to put your ideas into action. Rack-A-Tiers launched Inventor's Corner for creative folks like you to pitch ideas and read testimonials from past inventors.

Even if Rack-A-Tiers is unable to add your idea to our product line, we have the experience and knowledge to provide advice for your next move as an inventor.

Check out the Inventor's Corner at RACK-A-TIERS.COM/INVENTORS and who knows maybe in next year's catalog your product could have a full-page spread.



WWW.RACK-A-TIERS.COM/INVENTORS

**Need a specific product?
We'll help you find it!**



Rack-a-tiers has over 25 years experience in the electrical manufacturing industry and if we don't have what you are looking for we will find it for you!

**TEXT: 888-939-9991
OR EMAIL: SALES@RACK-A-TIERS.COM**

