

PRODUCT INFORMATION PACKET



Model No: 114638.00

Catalog No: 114638.00

General Purpose Motor, 1 & 1 HP, 3 Ph, 60 & 50 Hz, 230/460 & 190/380 V, 1800 & 1500 RPM, 56C Frame, TEFC

Operational at 208-230/460 V @60HZ



Regal and Leeson are trademarks of Regal Rexnord Corporation or one of its affiliated companies.

©2023 Regal Rexnord Corporation, All Rights Reserved. MC017097E





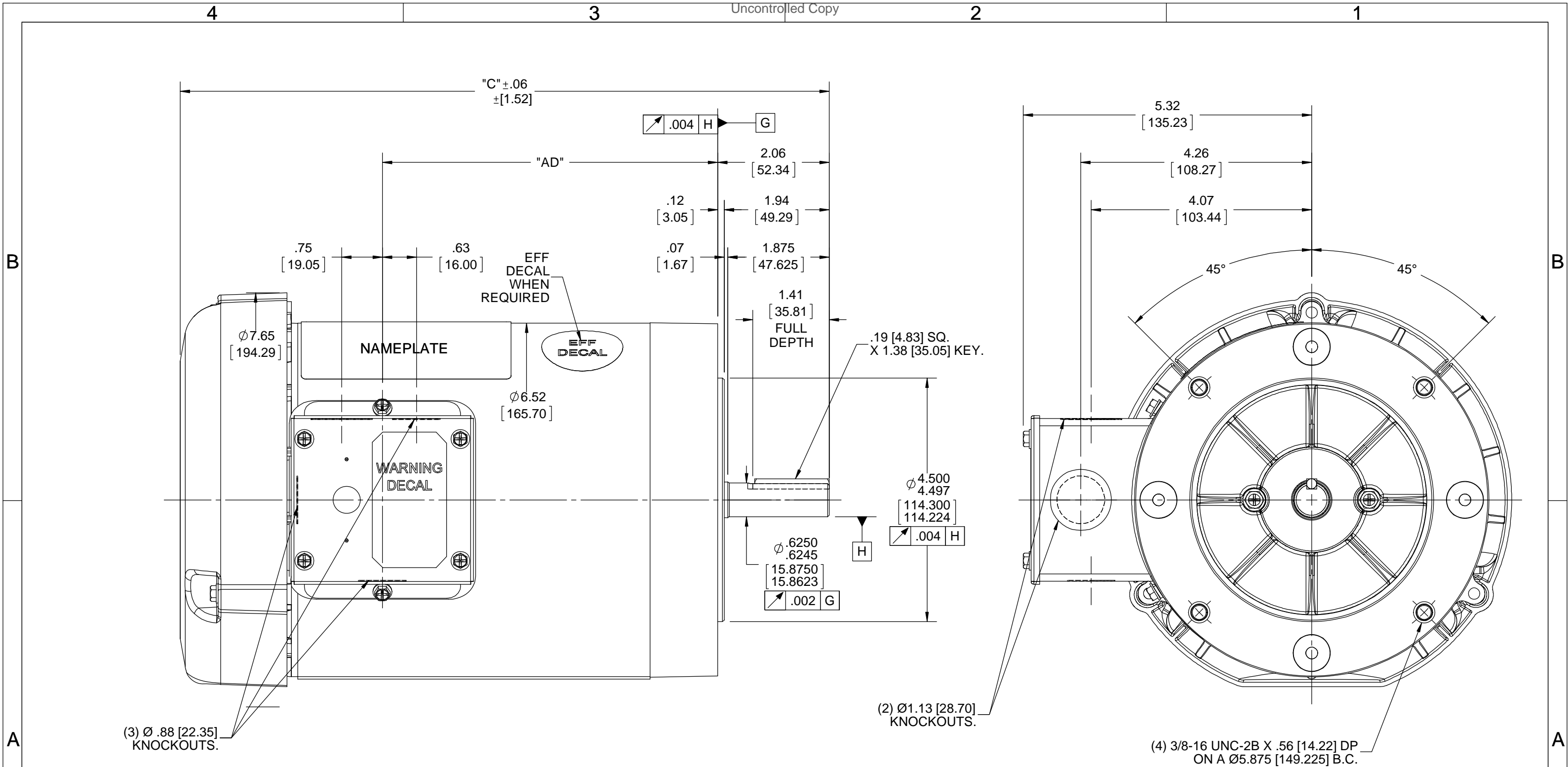
Nameplate Specifications

| | | | |
|------------------------|--------------------------------|----------------------------|------------------------------------|
| Phase | 3 | Output HP | 1 & 1 Hp |
| Output KW | 0.75 & 0.75 kW | Voltage | 230/460 & 190/380 V |
| Speed | 1760 & 1450 rpm | Service Factor | 1.15 & 1.15 |
| Frame | 56C | Enclosure | Totally Enclosed Fan Cooled |
| Thermal Protection | Thermostat | Efficiency | 85.5 & 82.5 % |
| Ambient Temperature | 40 °C | Frequency | 60 & 50 Hz |
| Current | 3.2/1.6 & 3.4/1.7 A | Power Factor | 68.5 |
| Duty | Continuous | Insulation Class | F |
| Design Code | B | KVA Code | N |
| Drive End Bearing Size | 6203 | Opp Drive End Bearing Size | 6203 |
| UL | Recognized | CSA | Y |
| CE | Y | IP Code | 54 |
| Number of Speeds | 1 | | |

Technical Specifications

| | | | |
|-----------------------|-------------------------------------|-----------------------|-------------------------|
| Electrical Type | Squirrel Cage Inverter Rated | Starting Method | Line Or Inverter |
| Poles | 4 | Rotation | Reversible |
| Resistance Main | 12.96 Ohms | Mounting | Round |
| Motor Orientation | Horizontal | Drive End Bearing | Ball |
| Opp Drive End Bearing | Ball | Frame Material | Rolled Steel |
| Shaft Type | NEMA 56 | Overall Length | 12.48 in |
| Frame Length | 7.00 in | Shaft Diameter | 0.625 in |
| Shaft Extension | 1.88 in | Assembly/Box Mounting | F1 ONLY |
| Inverter Load | CONSTANT 10:1 | | |
| Connection Drawing | 005010.20 | Outline Drawing | 029091-700 |

This is an uncontrolled document once printed or downloaded and is subject to change without notice. Date Created:12/13/2023



NOTE:-
1) GASKETS THROUGHOUT.

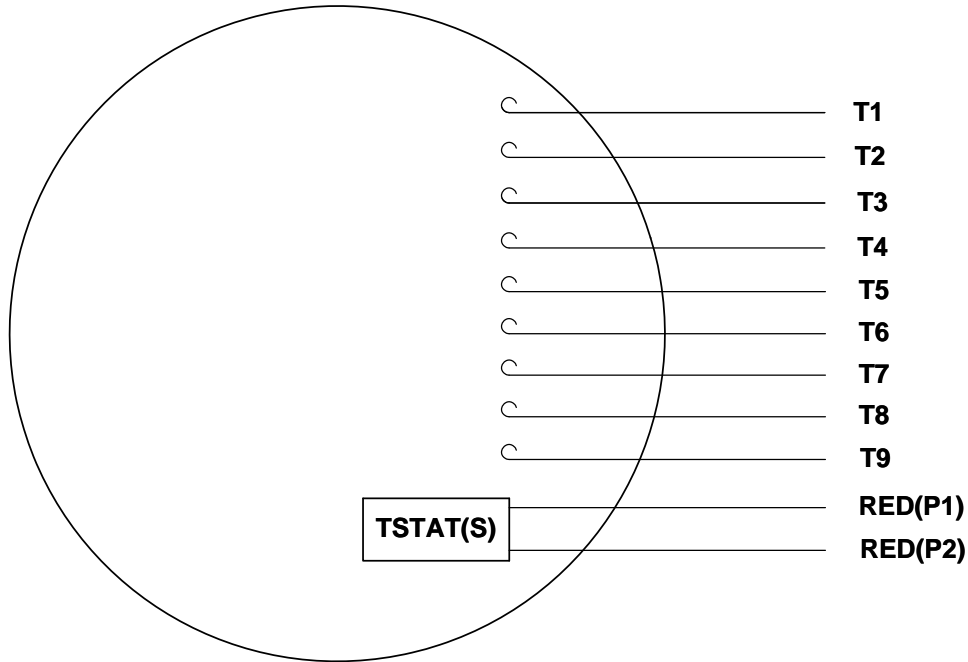
| DASH NO. | "C" | "AD" |
|----------|----------------|---------------|
| 650 | 11.99 [304.55] | 6.19 [157.23] |
| 700 | 12.49 [317.25] | 6.69 [169.93] |
| 750 | 12.99 [329.95] | 7.19 [182.63] |
| 800 | 13.49 [342.65] | 7.69 [195.33] |

| DRAWING REVISION | REVISION BY | DATE |
|---|-------------|------|
| A | | |
| ECO-0140840 | APPROVED BY | DATE |
| ECO DESCRIPTION | | |
| OUTLINE CONVERSION PROJECT COPYRIGHT REGAL BELOIT AMERICA, INC. ALL RIGHTS RESERVED. PROPRIETARY AND CONFIDENTIAL INFORMATION - THIS DOCUMENT IS THE PROPERTY OF REGAL BELOIT AMERICA, INC. ("OWNER") AND CONTAINS OWNER'S PROPRIETARY INFORMATION. ANY PERSON, CORPORATION OR OTHER FIRM RECEIVING IT IS DEEMED, BY RECEIVING IT, TO AGREE THAT IT, AND/OR ANY PART OF IT, SHALL NOT BE DISCLOSED TO ANY PERSON, CORPORATION OR OTHER ENTITY, DUPLICATED, AND/OR USED, EXCEPT AS EXPRESSLY APPROVED IN WRITING IN ADVANCE BY OWNER. THIS DOCUMENT SHALL BE RETURNED TO OWNER UPON REQUEST. IT MAY BE SUBJECT TO CERTAIN RESTRICTIONS UNDER APPLICABLE EXPORT CONTROL LAWS AND REGULATIONS. | | |

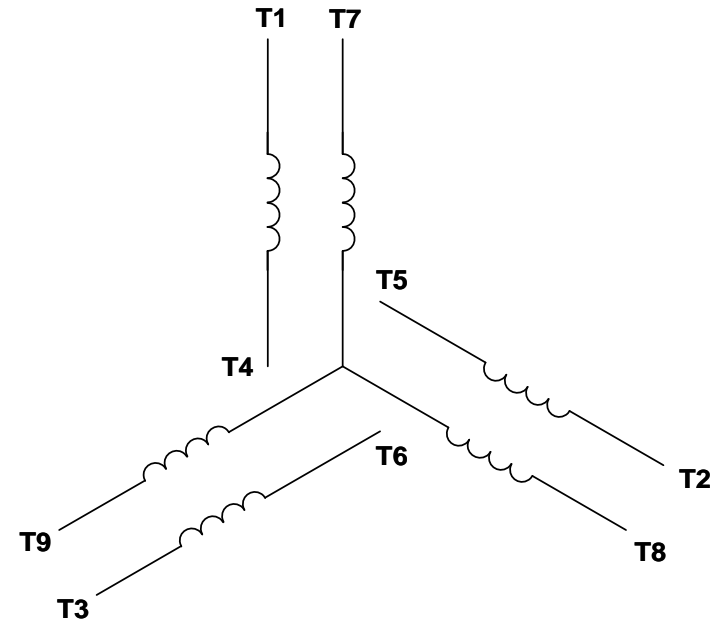
| TOLERANCES UNLESS OTHERWISE SPECIFIED: | | |
|---|---------|-----------|
| DEC. | INCH | mm |
| .X | ±0.1 | [±2.5] |
| .XX | ±0.03 | [±0.76] |
| .XXX | ±0.005 | [±0.127] |
| .XXXX | ±0.0005 | [±0.0127] |
| REMOVE BURRS & BREAK SHARP EDGES: .003/.015 [.076/.381] X 45° CORNER FILLETS: R.02 [.51] MACHINED SURFACES: 125 INCH 3.2 mm SHOWN IN [BRACKETS] | | |

| DRAWN BY | | REGAL™ Regal Beloit America, Inc. | |
|------------------------|------------|-----------------------------------|-----------------|
| A SUPPANAVAR | | DESCRIPTION | |
| DATE | 01/29/2018 | OUTLINE | |
| APPROVED BY | PK | 56C FRAME TEFC-"C" FACE | |
| DATE | 03/08/2018 | MATERIAL | PROCESS/FINISH |
| REFERENCE | 028776 | | GENERAL PURPOSE |
| THIRD ANGLE PROJECTION | | SIZE | DRAWING NUMBER |
| | | B | 029091 |
| | | | SHEET 1 OF 1 |

VIEW FROM OUTSIDE OF MOTOR AT SWITCH END. Uncontrolled Copy



LINE LEADS



| VOLTAGE | L1 | L2 | L3 | JOIN & INSULATE |
|---------|-------|-------|-------|-------------------------------|
| HIGH | T1 | T2 | T3 | (T4,T7) (T5,T8) (T6,T9) |
| LOW | T1,T7 | T2,T8 | T3,T9 | T4,T5,T6 |

DRAWING REVISION **G** REVISION BY **MVG** DATE **04/05/2017**

ECO **ECO-0121253** APPROVED BY **SM** DATE **04/05/2017**

ECO DESCRIPTION
ADDED P1 & P2 FOR TSTAT

COPYRIGHT REGAL BELOIT AMERICA, INC. ALL RIGHTS RESERVED.
PROPRIETARY AND CONFIDENTIAL INFORMATION - THIS DOCUMENT IS THE PROPERTY OF
REGAL BELOIT AMERICA, INC. ("OWNER") AND CONTAINS OWNER'S PROPRIETARY
INFORMATION. ANY PERSON, CORPORATION OR OTHER FIRM RECEIVING IT IS DEEMED,
BY RECEIVING IT, TO AGREE THAT IT, AND/OR ANY PART OF IT, SHALL NOT BE DISCLOSED
TO ANY PERSON, CORPORATION OR OTHER ENTITY, DUPLICATED, AND/OR USED, EXCEPT
AS EXPRESSLY APPROVED IN WRITING IN ADVANCE BY OWNER. THIS DOCUMENT SHALL
BE RETURNED TO OWNER UPON REQUEST. IT MAY BE SUBJECT TO CERTAIN
RESTRICTIONS UNDER APPLICABLE EXPORT CONTROL LAWS AND REGULATIONS.

TOLERANCES UNLESS OTHERWISE SPECIFIED:

| DEC. | INCH | mm | ANGLE |
|-------|---------|-----------|-------|
| .X | ±0.1 | [±2.5] | ±0.5° |
| .XX | ±0.01 | [±0.25] | |
| .XXX | ±0.005 | [±0.127] | |
| .XXXX | ±0.0005 | [±0.0127] | |

REMOVE BURRS & BREAK SHARP EDGES: .003/.015 [.076/.381] X 45°
CORNER FILLETS: R.02 [.51]
MACHINED SURFACES: 125/3.2 INCH/mm
mm SHOWN IN [BRACKETS]

DRAWN BY **DBT 12/16/97**

DATE

APPROVED BY **KH 12/17/97**

DATE

REFERENCE

THIRD ANGLE PROJECTION



DESCRIPTION
CONN DIAGRAM-EXTERNAL
3 PHASE WITH PROTECTOR

MATERIAL **DECAL - 004014 (TSTAT) - 080582** PROCESS/FINISH **STOCK**

SIZE **A** DRAWING NUMBER **00501020** SHEET **1 OF 1**

P.O. BOX 8003
 WAUSAU, WI 54401-8003
 PH. 715-675-3311



DATA VOLTS: 460

CERTIFICATION DATA SHEET

CONN. DIAGRAM: 005010.20
 OUTLINE: 028776-700
 WINDING: T634342

CAT #: 114638.00

FR 3

TYPICAL MOTOR PERFORMANCE DATA

| HP | KW | SYNC RPM | FL RPM | FRAME | ENCLOSURE | TYPE | KVA CODE | DESIGN |
|----|------|----------|--------|-------|-----------|------|----------|--------|
| 1 | 0.75 | 1800 | 1760 | 56C | TEFC | TFR | N | B |

| PH | HZ | VOLTS | AMPS | START TYPE | DUTY | INSL | S.F. | AMB | ELEV. |
|----|-------|-----------------|-------------------|------------------|------|------|------|-----|-------|
| 3 | 60/50 | 230/460#190/380 | 3.1/1.55&3.5/1.75 | LINE OR INVERTER | CONT | F | 1.15 | 40 | 3300 |

| F.L. EFF | 85.5 | 3/4 LD EFF | 85.4 | 1/2 LD EFF | 79.6 | GTD EFF | ELECT. TYPE |
|----------|------|------------|------|------------|------|---------|-------------------|
| F.L. PF | 68.5 | 3/4 LD PF | 61.5 | 1/2 LD PF | 51.5 | 0.0 | SQ CAGE INV RATED |

| F.L. TORQUE | LR AMPS @ 460 V | L.R. TORQUE | B.D. TORQUE | F.L. RISE (°C) |
|-------------|-----------------|-----------------|-----------------|----------------|
| 3.0 LB-FT | 14.0 | 12.0 LB-FT 400% | 15.8 LB-FT 527% | 38 |

| PRESSURE @ 3 | POWER | ROTOR WK² | MAX. LOAD WK² | SAFE STALL TIME | STARTS/HOUR | MOTOR WGT |
|--------------|--------|-------------|---------------|-----------------|-------------|-----------|
| 65 dBA | 74 dBA | 0.12 LB-FT² | 0 LB-FT² | 10 SEC. | 0 | 0 LB. |

*** SUPPLEMENTAL INFORMATION ***

| DE BRACKET TYPE | ODE BRACKET TYPE | MOUNT TYPE | MOTOR ORIENTATION | SEVERE DUTY | HAZARDOUS LOCATION | DRIP COVER | SCREENS | PAINT |
|-----------------|------------------|------------|-------------------|-------------|--------------------|------------|---------|------------------|
| C-FACE | STANDARD | ROUND | HORIZONTAL | NO | NONE | NO | NONE | N - LEESON WATTS |

| BEARINGS | | GREASE | SHAFT TYPE | SPECIAL DE | SPECIAL ODE | SHAFT MATERIAL | FRAME MATERIAL |
|----------|------|------------|-------------|------------|-------------|--------------------------|----------------|
| DE | ODE | POLYREX EM | STANDARD 56 | NONE | NONE | 1144 STRESSPROOF (C-223) | ROLLED STEEL |
| BALL | BALL | | | | | | |
| 6203 | 6203 | | | | | | |

| THERMOSTATS | PROTECTORS | WDG RTD's | BRG RTD's | THERMISTORS | CONTROL | SPACE HEATERS |
|--------------|------------|-----------|-----------|-------------|---------|---------------|
| TSTATS (N/C) | AUTOMATIC | NONE | NONE | NONE | FALSE | NA |

| R1 (ohms/ph) | R2 (ohms/ph) | X1 (ohms/ph) | X2 (ohms/ph) | Xm (ohms/ph) | VIBRATION (in/sec) | FLOAT |
|--------------|--------------|--------------|--------------|--------------|--------------------|-------|
| 0 | 0 | 0 | 0 | 0 | 0.150 | ODE |

| | | | | | | |
|---------------------------------|---|--|--|--|--|--|
| * N O T E S * | INVERTER TORQUE: CONSTANT 10:1 INV. HP SPEED RANGE: 1.5 X BASE SPEED | | | | | |
| | ENCODER: NONE | | | | | |
| | NONE | | | | | |
| | NONE | | | | | |
| | NONE PPR | | | | | |

| | | | | | | |
|-----------------------|-------------|--|--|--|--|--|
| DATE: 1/18/2018 | BRAKE: NONE | | | | | |
| | NONE | | | | | |
| | NONE | | | | | |
| | FT-LB: NA | | | | | |
| VOLTAGE: NONE | | | | | | |
| HZ: | | | | | | |
| UL: Y-(LEESON UL REC) | | | | | | |

Data Sheet

Date: 1/18/2018

114638.00



Data @ 460 V

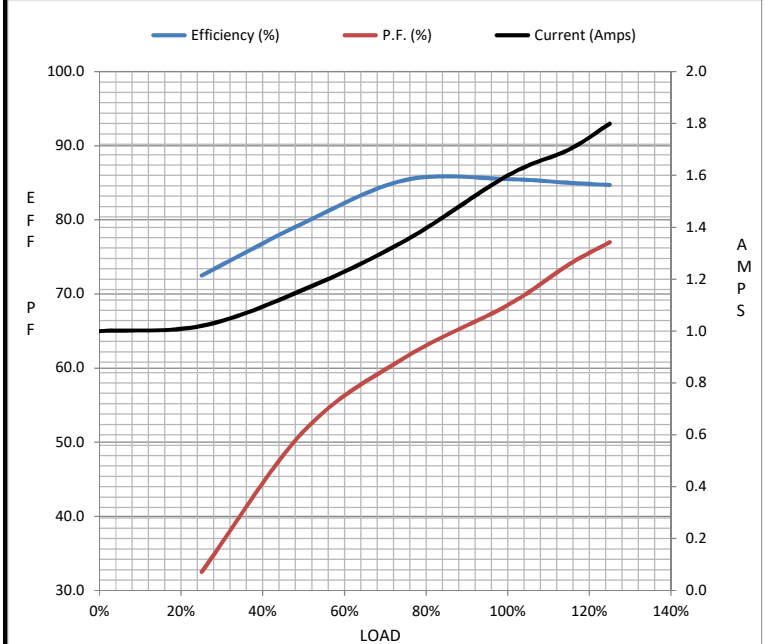
Motor Load Data

| Load | 0% | 25% | 50% | 75% | 100% | 115% | 125% | LR |
|----------------|------|------|------|------|------|-------|------|------|
| Current (Amps) | 1.00 | 1.02 | 1.16 | 1.35 | 1.60 | 1.70 | 1.80 | 14.0 |
| Torque (ft-lb) | 0.00 | 0.75 | 1.50 | 2.25 | 3.0 | 3.5 | 3.8 | 12.0 |
| RPM | 1800 | 1789 | 1779 | 1769 | 1760 | 1.750 | 1745 | 0 |
| Efficiency (%) | | 72.5 | 79.6 | 85.4 | 85.5 | 85.0 | 84.7 | |
| P.F. (%) | 8.0 | 32.5 | 51.5 | 61.5 | 68.5 | 74.0 | 77.0 | 41.0 |

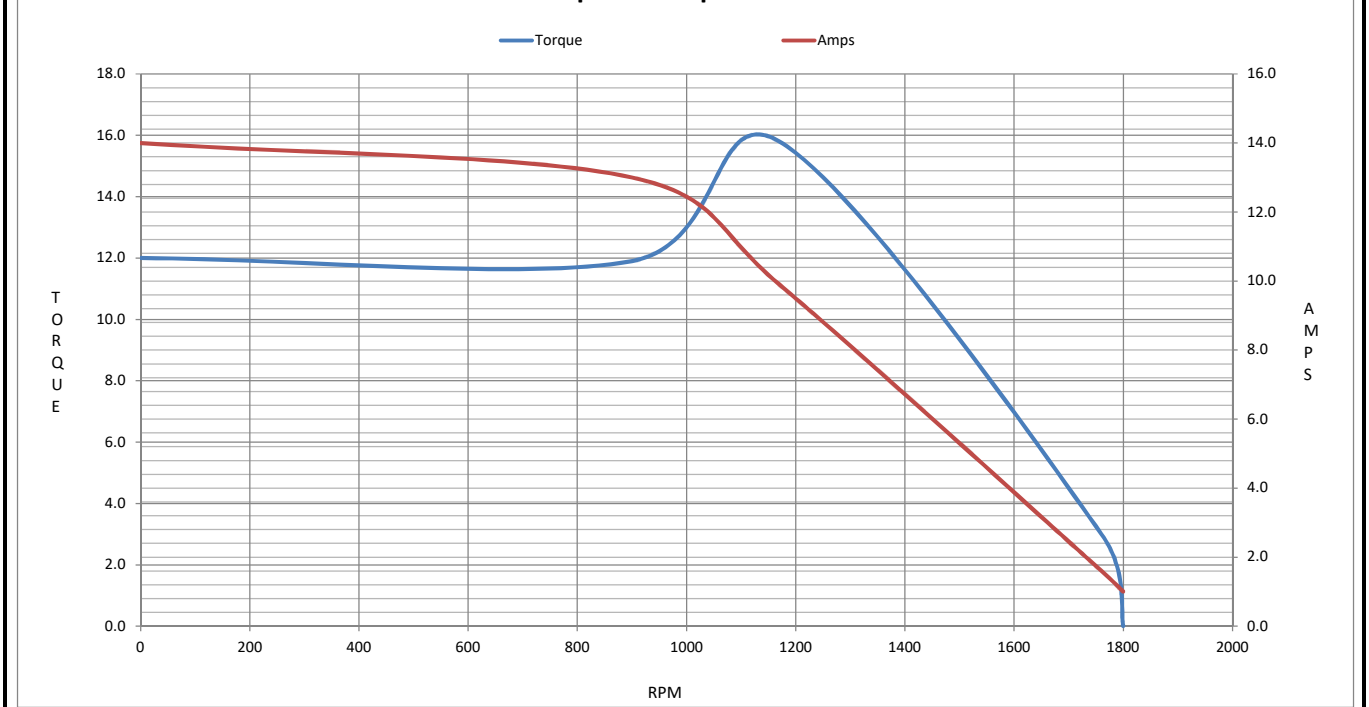
Motor Speed Data

| | LR | Pull-Up | BD | Rated | Idle |
|----------------|------|---------|------|-------|------|
| Speed (RPM) | 0 | 900 | 1170 | 1760 | 1800 |
| Current (Amps) | 14.0 | 13.0 | 9.9 | 1.60 | 1.00 |
| Torque (ft-lb) | 12.0 | 11.9 | 15.8 | 3.0 | 0.00 |

| Information Block | | | | |
|-----------------------------|-------------------------|--------|--------|--------|
| HP | 1.0 | | | |
| Sync. RPM | 1800 | | | |
| Frame | 140 | | | |
| Enclosure | TEFC | | | |
| Construction | TFR | | | |
| Voltage | 230/460#190/380 V | | | |
| Frequency | 60 Hz | | | |
| Design | B | | | |
| LR Code letter | N | | | |
| Service Factor | 1.15 | | | |
| Temp Rise @ FL | 38 °C | | | |
| Duty | CONT | | | |
| Ambient | 40 °C | | | |
| Elevation | 1,000 feet | | | |
| Rotor/Shaft wk ² | 0.12 Lb-Ft ² | | | |
| Ref Wdg | T634342 FR | | | |
| Sound Pressure @ 1M | 65 dBA | | | |
| VFD Rating | CONSTANT 10:1 | | | |
| Outline Dwg | 028776-700 | | | |
| Conn. Diag | 005010.20 | | | |
| Additional Specifications: | | | | |
| 0 | | | | |
| 0 | | | | |
| EQUIV CKT (OHMS / PHASE) | | | | |
| R1 | R2 | X1 | X2 | Xm |
| 0.0000 | 0.0000 | 0.0000 | 0.0000 | 0.0000 |



Speed - Torque Curve



EC Declaration of Conformity

The undersigned representing
the manufacturer:

Regal Beloit America
100 East Randolph St.
Wausau, WI 54401

and the authorized representative
established within the Community:

Marathon Electric UK
6F Thistleton Road Ind. Estate
Market Overton
Oakham, Rutland LE15 7PP UK

are committed to providing customers with products that comply with applicable regulations and international protocols to which they are subject, including the requirements of the European Parliament Directive on the Harmonization of the laws relating to electrical equipment designed for use within certain voltage limits (2014/35/EU).

Regal Beloit America declares that the following product(s), to which this declaration relates, are in conformity with the relevant sections of the EC standards listed below.

This statement supersedes any statements previously issued pertaining to the product(s) listed below and is subject to change without notice.

Model No : 114638.00

(Model No. may contain prefix and/or suffix characters)

Catalog No : 114638.00

Rework No : N/A

Directives :

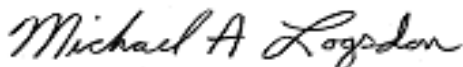
Low Voltage Directive 2014/35/EU

Harmonized Standards Used :

EN 60034-1: 2010 (IEC 60034-1: 2010)

EN 60034-5: 2001/A1:2007 (IEC 60034-5: 2000/A1:2006)

Authorized Representative:



Michael A. Logsdon
Vice President, Technology

Authorized Representative in the Community:



Julian Clark
Marketing Engineer

Created on 09/01/2022

CE 22