

# PRODUCT INFORMATION PACKET



Model No: 110222.00  
Catalog No: 110222.00  
Air Compressor Motor, 3 HP, 1 Ph, 60 Hz, 230 V, 3600 RPM, 56Y Frame, DP



Regal and Leeson are trademarks of Regal Rexnord Corporation or one of its affiliated companies.  
©2022 Regal Rexnord Corporation, All Rights Reserved. MC017097E





### Nameplate Specifications

Output HP	3 Hp	Output KW	2.2 kW
Frequency	60 Hz	Voltage	230 V
Current	15.0 A	Speed	3450 rpm
Service Factor	1.15	Phase	1
Efficiency	76 %	Power Factor	90
Duty	Continuous	Insulation Class	F
Design Code	L	KVA Code	G
Frame	56Y	Enclosure	Drip Proof
Thermal Protection	Manual	Ambient Temperature	40 °C
Drive End Bearing Size	6205	Opp Drive End Bearing Size	6203
UL	Recognized	CSA	Y
CE	N	IP Code	22
Number of Speeds	1		

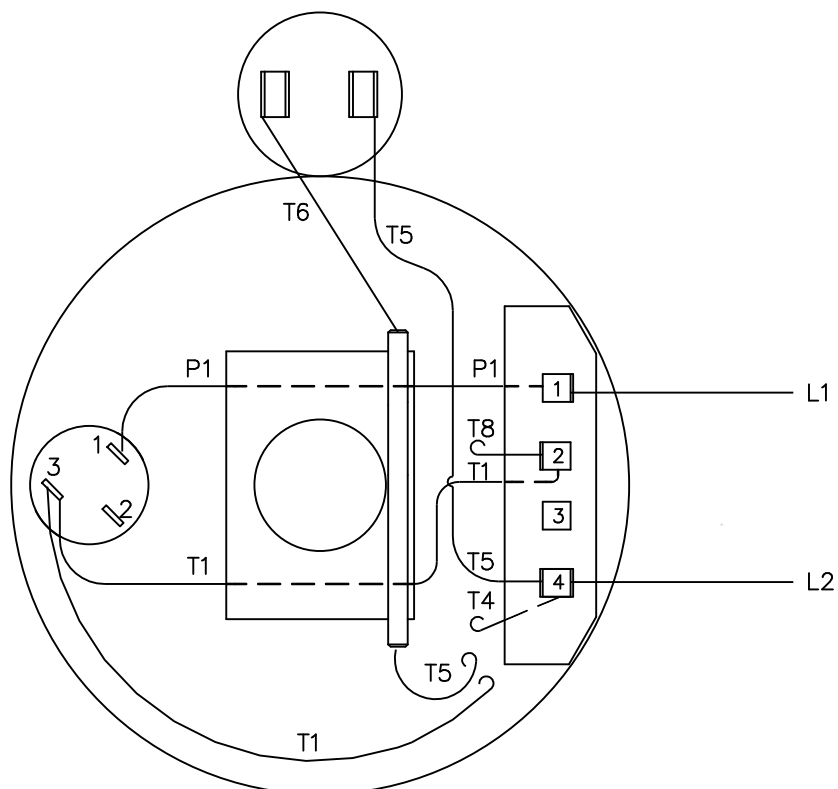
### Technical Specifications

Electrical Type	Capacitor Start Induction Run	Starting Method	Across The Line
Poles	2	Rotation	Selective Counterclockwise
Resistance Main	.86 Ohms	Mounting	Rigid Base
Motor Orientation	Horizontal	Drive End Bearing	Ball
Opp Drive End Bearing	Ball	Frame Material	Rolled Steel
Shaft Type	NEMA 56	Overall Length	12.28 in
Frame Length	7.50 in	Shaft Diameter	0.625 in
Shaft Extension	1.87 in	Assembly/Box Mounting	F1 ONLY
Outline Drawing	029079-750B	Connection Drawing	005028.03

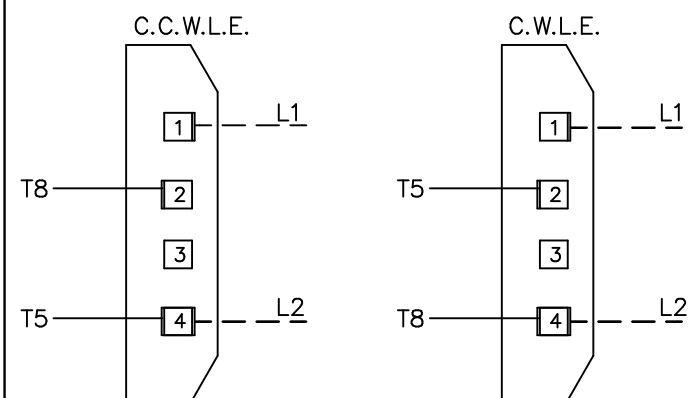
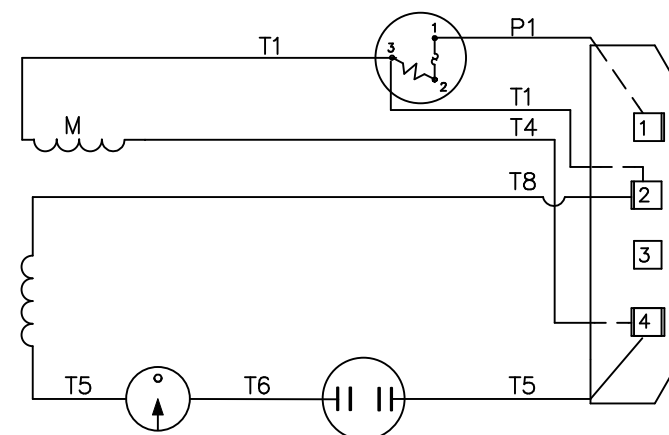
This is an uncontrolled document once printed or downloaded and is subject to change without notice. Date Created:11/28/2022



VIEW FROM OUTSIDE OF MOTOR AT SWITCH END.



## LINE LEADS

TOLERANCES UNLESS  
OTHERWISE SPECIFIED

DECIMALS

.00 ± .01

.000 ± .005

.0000 ± .0005

FRACTIONS ± 1/64

ANGLES ± 1/2°

INCH/MM

**LEESON** ELECTRIC CORPORATION

DRAWN WLW 06/24/77

CH'K'D. TEM

APPR. 06/29/77

SCALE 1=1

REF. C4G

FMF A4C17DR20

TITLE  
EXTERNAL WIRING DIAGRAM  
TYPE "C" W/ PROTECTOR

MAT'L. DECAL - 004112

**BRF**

FINISH

SIZE  
A

DRAWING NO.

005028-03

THIS DRAWING IN DESIGN AND DETAIL IS OUR PROPERTY  
AND MUST NOT BE USED EXCEPT IN CONNECTION WITH OUR WORK  
ALL RIGHTS OF DESIGN AND INVENTION ARE RESERVED



# CERTIFICATION DATA SHEET

**1051 CHEYENNE AVE.  
GRAFTON, WI 53024  
PH. 262-377-8810**

**CONN. DIAGRAM:** 005028.03

**CATALOG #:** 110222.00

**OUTLINE:** 029079-750B

**MOUNTING:** F1 ONLY

**WINDING #:** C632214 2 A

## TYPICAL MOTOR PERFORMANCE DATA

HP	kW	SYNC. RPM	F.L. RPM	FRAME	ENCLOSURE	KVA CODE	DESIGN
3	2.24	3600	3450	56Y	DP	G	L

PH	Hz	VOLTS	AMPS	START TYPE	DUTY	INSL	S.F.	AMB°C
1	60	230	15	ACROSS THE LINE	CONTINUOUS	F4	1.15	40

<b>FULL LOAD EFF:</b> 76	<b>3/4 LOAD EFF:</b> 74.4	<b>1/2 LOAD EFF:</b> 71.4	<b>GTD. EFF</b>	<b>ELEC. TYPE</b>
<b>FULL LOAD PF:</b> 90	<b>3/4 LOAD PF:</b> 82.1	<b>1/2 LOAD PF:</b> 67.7	72	CAP START IND RUN

F.L. TORQUE	LOCKED ROTOR AMPS	L.R. TORQUE	B.D. TORQUE	F.L. RISE°C
4.57 LB-FT	78	8.3 LB-FT 184 %	8.9 LB-FT 198 %	86

SOUND PRESSURE @ 3 FT.	SOUND POWER	ROTOR WK^2	MAX. WK^2	SAFE STALL TIME	STARTS / HOUR	APPROX. MOTOR WGT
0 dBA	10 dBA	0.074 LB-FT^2	0.1 LB-FT^2	0 SEC.	0	41 LBS.

## \*\*\* SUPPLEMENTAL INFORMATION \*\*\*

DE BRACKET TYPE	ODE BRACKET TYPE	MOUNT TYPE	ORIENTATION	SEVERE DUTY	HAZARDOUS LOCATION	DRIP COVER	SCREENS	PAINT
STANDARD	STANDARD	RIGID	HORIZONTAL	FALSE	NONE	FALSE	NONE	BLUE - LEESON (ENAMEL)

BEARINGS		GREASE	SHAFT TYPE	SPECIAL DE	SPECIAL ODE	SHAFT MATERIAL	FRAME MATERIAL
DE	ODE						
BALL	BALL	POLYREX EM	STANDARD 56	NONE	NONE	1144 STRESSPROOF (C-223)	ROLLED STEEL
6205	6203						

THERMO-PROTECTORS				THERMISTORS	CONTROL	SPACE HEATERS
THERMOSTATS	PROTECTORS	WDG RTDs	BRG RTDs			
NONE	MANUAL	NONE	NONE	NONE	FALSE	NONE VOLTS

\*

N

O

T

E

S

**INVERTER TORQUE:** NONE  
**INV. HP SPEED RANGE:** NONE

**ENCODER:** NONE  
NONE NONE  
NONE NONE PPR

**BRAKE:** NONE NONE  
NONE P/N NONE  
NONE NONE  
NONE FT-LB NONE V NONE Hz

