

PRODUCT INFORMATION PACKET



Model No: 108703.00
Catalog No: 108703.00
Parallel Shaft Gearmotor, 0.25 HP, 90 V, 42 RPM, 48Y Frame, TENV



Regal and Leeson are trademarks of Regal Rexnord Corporation or one of its affiliated companies.
©2023 Regal Rexnord Corporation, All Rights Reserved. MC017097E





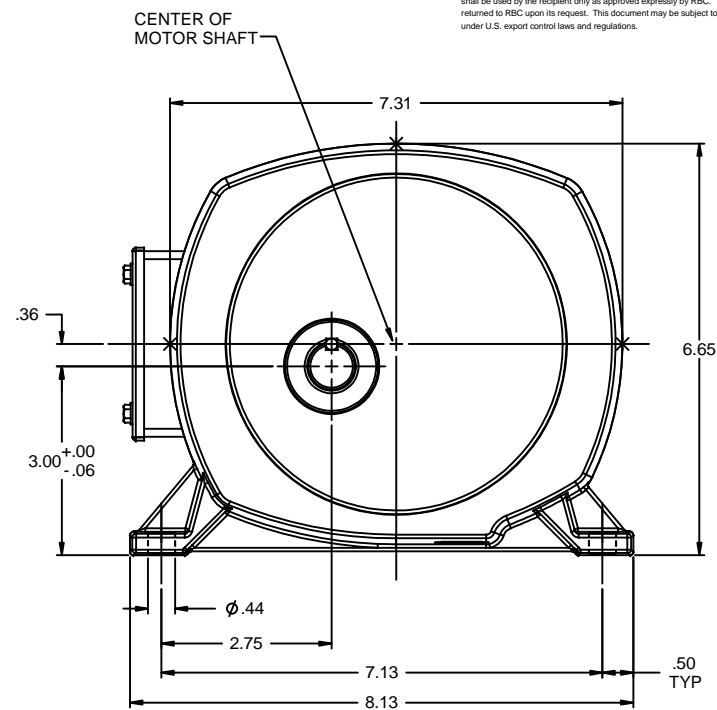
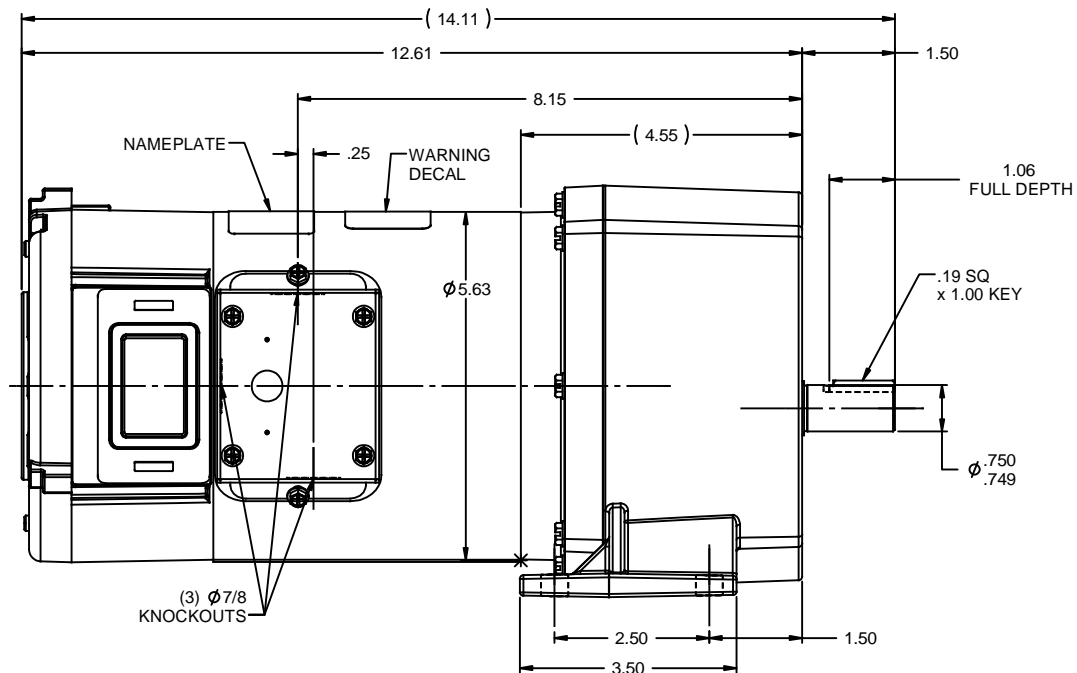
Nameplate Specifications

Output HP	0.25 Hp	Output KW	0.19 kW
Voltage	90 V	Current	2.7 A
Speed	42 rpm	Service Factor	1
Efficiency	64.9 %	Duty	Continuous
Insulation Class	F	Frame	48Y
Enclosure	Totally Enclosed Non Ventilating	Thermal Protection	No Protection
Ambient Temperature	40 °C	Drive End Bearing Size	6203
Opp Drive End Bearing Size	6203	UL	Recognized
CSA	Y	CE	N

Technical Specifications

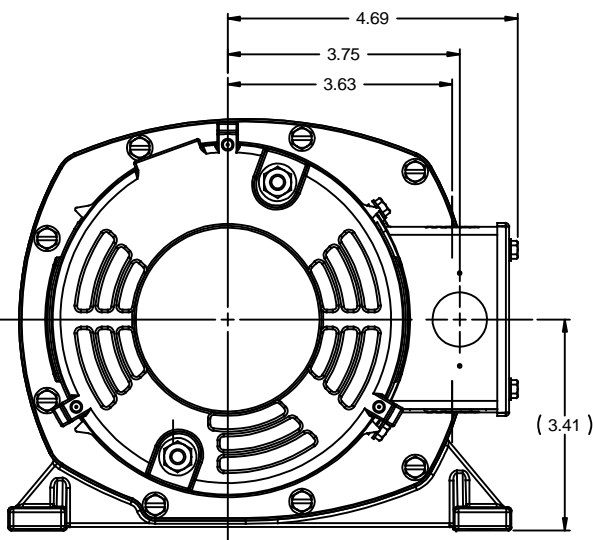
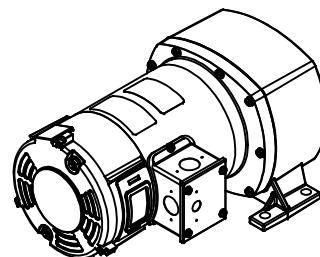
Rotation	Reversible	Mounting	Special
Shaft Type	Parallel	Overall Length	14.11 in
Frame Length	4.97 in	Shaft Diameter	0.750 in
Shaft Extension	1.5 in	Torque	353 LB-IN
Outline Drawing	032033-108703	Connection Drawing	00531901

This is an uncontrolled document once printed or downloaded and is subject to change without notice. Date Created:03/15/2023



NOTES:
1) GEARBOX OIL: MOBIL-MOBIL GEAR 600XP-320

108706.00	90	1/4	13:1	135	105
108705.00	90	1/4	19:1	92	160
108704.00	90	1/4	29:1	60	238
108703.00	90	1/4	42:1	42	353
108702.00	90	1/4	95:1	18	750
108701.00	90	1/4	143:1	12	1030
108700.00	90	1/4	212:1	8	1087
CATALOG No.	VOLTS	INPUT HP	GEAR RATIO	RPM	F.L. TORQUE (LB-IN)



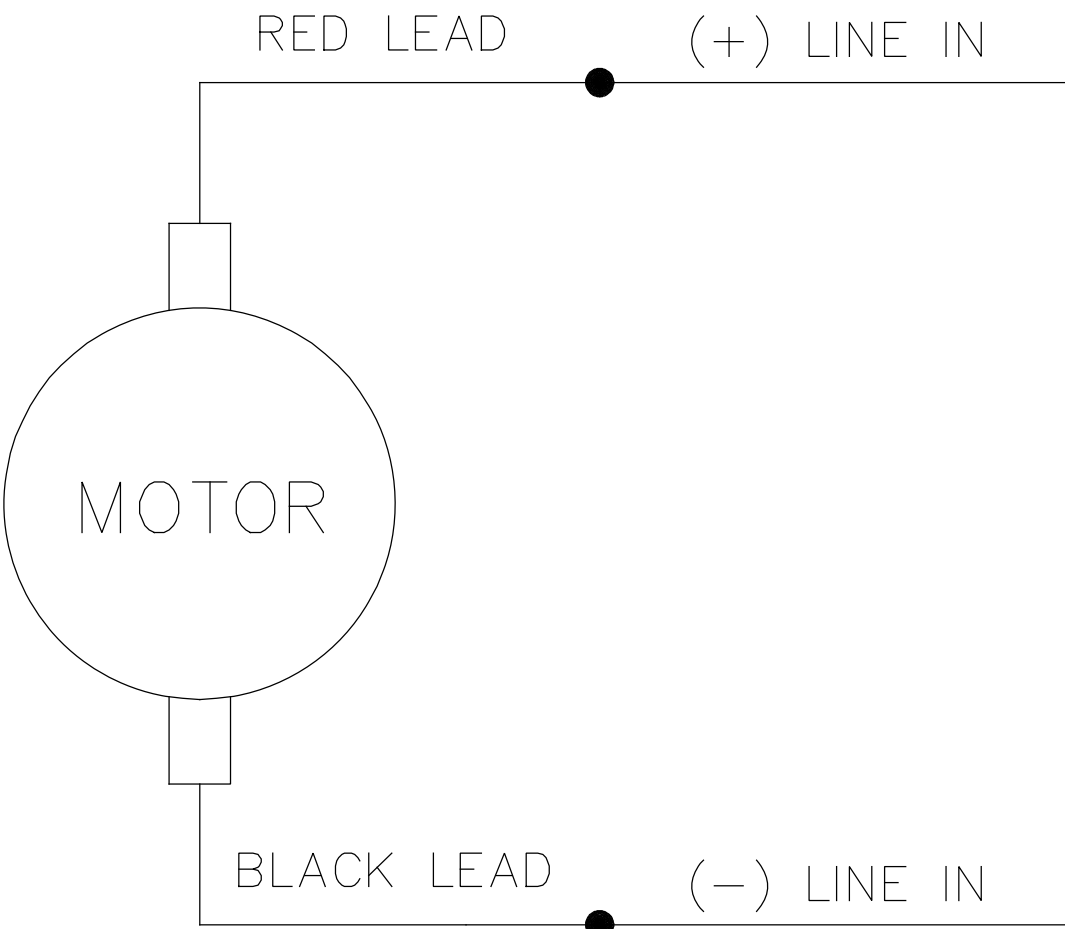
			TOLERANCES UNLESS SPECIFIED		DRAWN IPG 6/9/10	
			DEC	INCHES	CHK	
			X	±.1	APPR	
			XX	±.03	SCALE 1:2	
			XXX	±.005	REF 031210	
			XXXX	±.0005	FMF 108700.00	
RELEASED: REF. 031210 & 032031			IPG	6/9/2010	PAGE OF	
NO			REVISION	BY & DATE	FINISH	
			CHK	ANG ±1/2"	PREV	
			RFP		SIZE	
			THIRD ANGLE PROJECTION		DRAWING NO	
			NETWORK FILE NAME	032033	REV	
					032033	



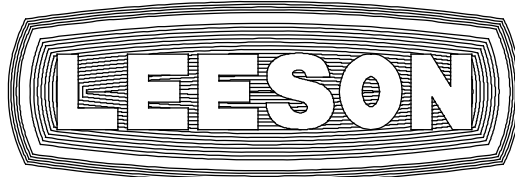
ELECTRIC MOTORS
GEARMOTORS
AND DRIVES

TITLE OUTLINE
48 FRAME DC - P1100 GEARBOX

005319.01



CONNECTIONS SHOWN FOR CCW ROTATION FACING LEAD END OF THE MOTOR
TO REVERSE ROTATION INTERCHANGE LINE LEADS

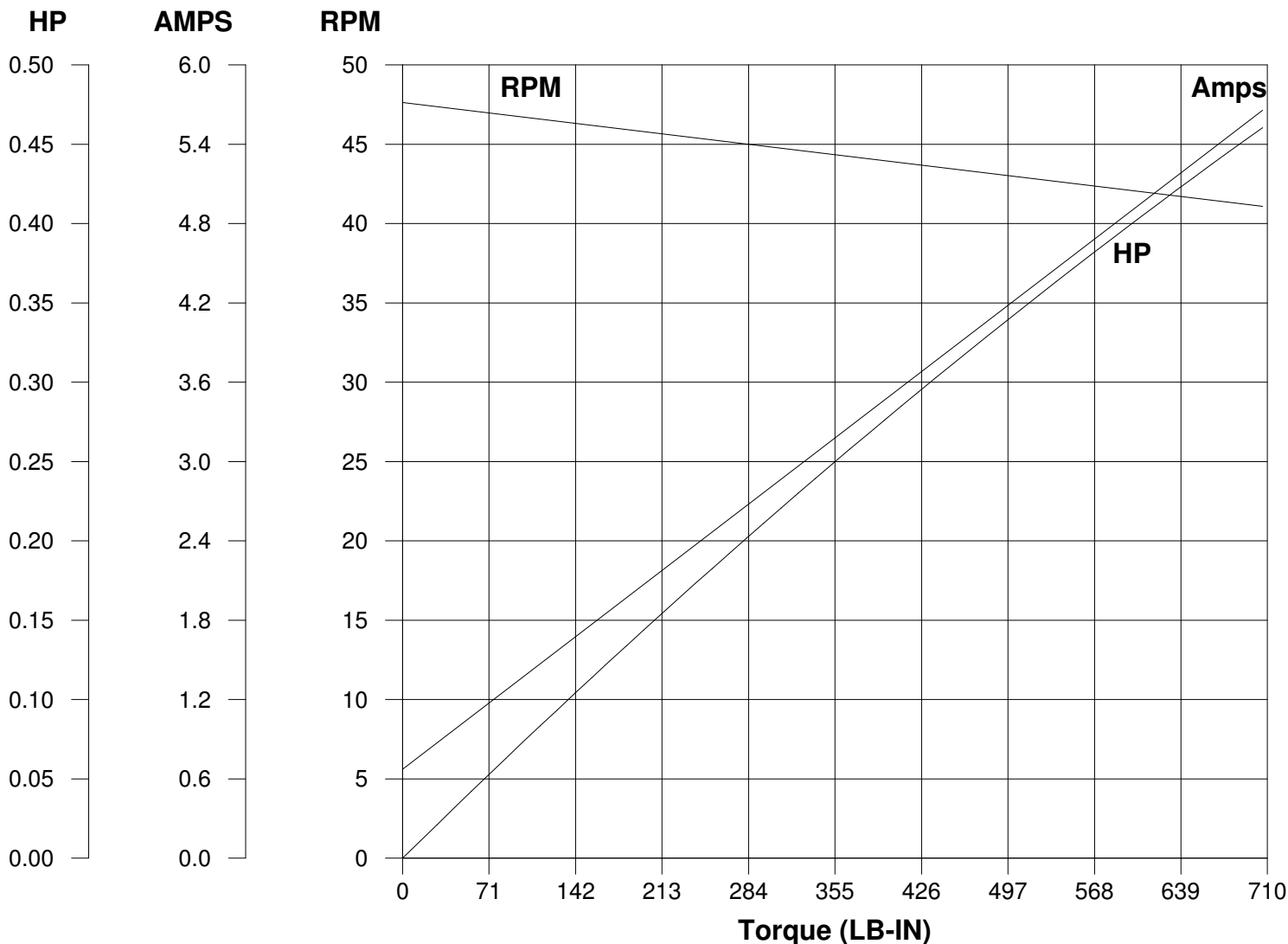
				TOLERANCES UNLESS SPECIFIED		 ELECTRIC MOTORS GEARMOTORS AND DRIVES	DRAWN TJF 11/15/97			
				DEC.	INCHES		CHK			
				.X	±.1		APPD POW 11/15/97			
E	"MOTOR" WAS "ARMATURE", ECO-0163602	IPG 3/14/19		.XX	±.01	TITLE EXTERNAL WIRING DIAGRAM PMDC MOTOR		SCALE 1=2		
D	UPDATED TO MAKE IT GENERIC, ECO-0163547	IPG 3/13/19		.XXX	±.005			REF		
01	REDRAWN ON CAD. REVISED NOTES.	SJB 9/20/2005		.XXXX	±.0005	MAT'L.		FMF		
NO.	REVISION	BY & DATE	CHK	ANG	±1/2"	FINISH		PREV		
THIS DRAWING IN DESIGN AND DETAIL IS OUR PROPERTY AND MUST NOT BE USED EXCEPT IN CONNECTION WITH OUR WORK ALL RIGHTS OF DESIGN AND INVENTION ARE RESERVED THIS IS AN ELECTRONICALLY GENERATED DOCUMENT – DO NOT SCALE THIS PRINT			RFP		CAD FILE 00531901		SIZE	DRAWING NO.		REV.
			DIST				A	005319.01		E

LEESON ELECTRIC CORPORATION

TYPICAL PERFORMANCE CURVE

FOR

DIRECT CURRENT PERMANENT MAGNET MOTOR

Model No. C4D17NZ20Catalog No. 108073.00HP 0.250RPM 42DC Volts 90.0N.P. FLA 2.70F.F. 1.38Encl TENVType DNS.F. 1.00Max. Amb. 40.0 Deg CInsul. FFrame P1102-48Duty Cont

Ra 1.9500 Ohms
 La 15.30 mHenrys
 Ja 5.000 LB-IN²
 Ke 45.75 V/KRPM

Kt 3.867 LB-IN/AMP
 Imax 48.2 AMPS Allowed
 FL Torque 353.0 LB-IN
 FL EFF 65.00 %

Winding W- D552141-1Prepared by V. BoehlenDate 10-27-2005