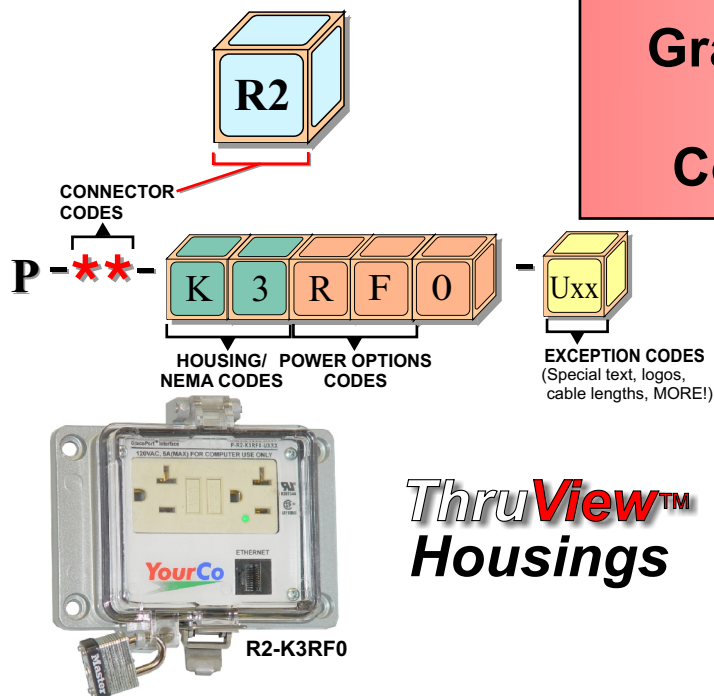


GracePort® Interface Products Computer Port Connector Code Data Sheet



INTERFACE TYPES

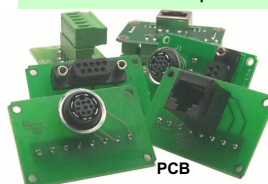
CABLE

Cable extension
Extension cable interfaces consist of fully shielded cable assemblies panel-mounted to the housing allowing a direct and cost effective method of interfacing to computers, printers, modems and networks.

Bulkhead connector
The bulkhead interface method permits standard cable connections on both the front and the rear of the GracePort® unit. Connections are made to and from the interface by way of user-supplied computer cable assemblies.

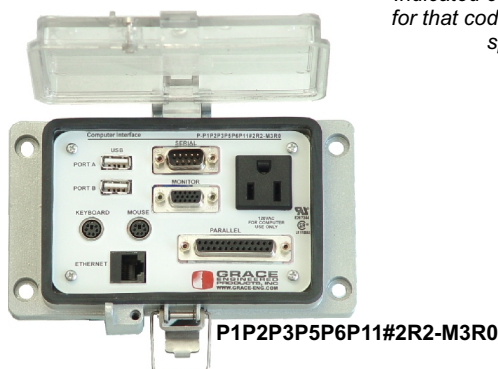


Printed circuit assembly
Low-profile circuit board interfaces simplify installation where backplane clearance is limited. The compact design features a data connector on the front and terminal block connections on the rear for easy wiring.



Indicated cable lengths are default lengths for that code. If alternate length is desired, specify when ordering.

	<u>Use:</u>	<u>Style:</u>
P1	Serial port	Cable, 10'
P2	Parallel port	Cable, 10'
P3	Keyboard (PS/2)	Cable, 6'
P28	Keyboard (USB)	Cable, 10'
P5	Mouse (PS/2)	Cable, 6'
P29	Mouse (USB)	Cable, 10'
P6	VGA Monitor	Cable, 10'
P7	Modem (RJ12)	Bulkhead Includes 20' cable
P11	USB Type A	Cable, 10'
P14	USB Type B	Bulkhead Incl. 3 meter cable
R2	Cat. 5 Ethernet	Bulkhead
R62	Cat. 6 Ethernet	Bulkhead



⚠ INSTALLATION

GracePorts® are intended to be mounted in or on an enclosure product. Installation should be performed by a qualified technician and adhere to applicable regulatory codes. These devices are for mounting on the flat surface of enclosures having the same type of environmental ratings.

SPECIFICATIONS: ELECTRICAL

Low voltage (data), limited to 30 VDC
High voltage supply (for computer use only):
120 VAC, 15A (UL), 5A (CSA)
230-240 VAC, 16A (CE only)

SPECIFICATIONS: MECHANICAL

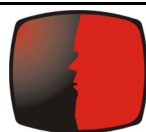
Housing: Cast alloy base, plastic cover
Gasket: NBR UL94
Insert Material: Acrylic UL94HB

APPROVALS



RoHS

UL RECOGNIZED: E207344 (Outdoor Use)
CSA: LR110845 (not for interrupting circuit)
CE: EN61010/EN60950 (Foreign Power Outlets)



GRACE
ENGINEERED
PRODUCTS, INC.
www.GracePort.com

5001 Tremont Avenue
Davenport, IA 52807
(800) 280-9517 Fax: (563) 386-9639

© 2007 Grace Engineered Products, Inc. DataSheets:P1:12/2007
GracePort® is a registered Trademark of Grace Engineered Products, Inc