

BALDOR® • RELIANCE

Product Information Packet

L3351

.08HP, 1725RPM, 1PH, 60HZ, 42, 3310L, TEFC, F1

Part Detail							
Revision:	AK	Status:	PRD/A	Change #:		Proprietary:	No
Type:	AC	Elec. Spec:	33WG0933	CD Diagram:	CD0001A10	Mfg Plant:	
Mech. Spec:		Layout:	33-850-933	Poles:	04	Created Date:	06-25-2007
Base:		Eff. Date:	09-07-2016	Leads:	6#18		

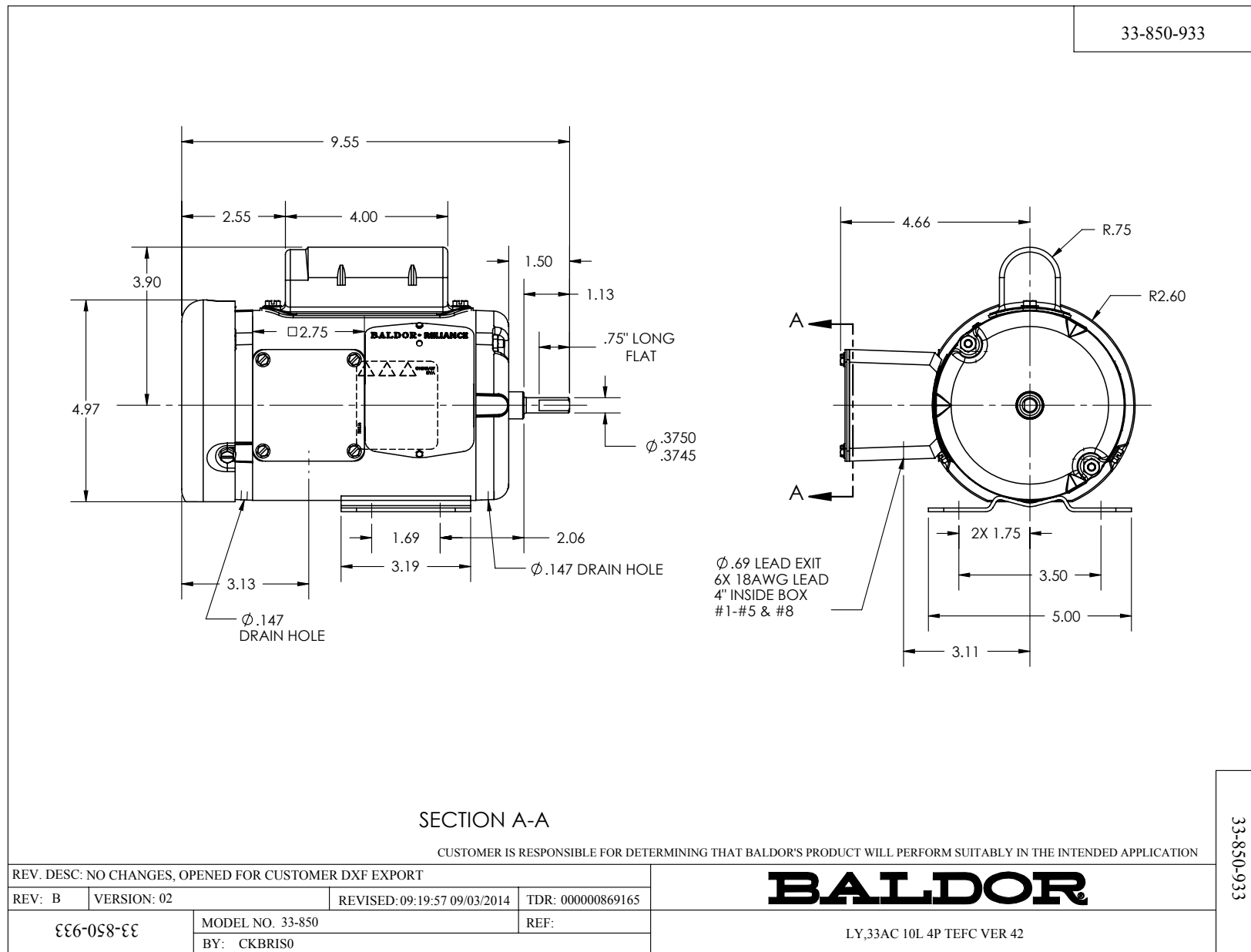
Specs			
Catalog Number:	L3351	Insulation Class:	B
Enclosure:	TEFC	Inverter Code:	Not Inverter
Frame:	42	KVA Code:	M
Frame Material:	Steel	Lifting Lugs:	No Lifting Lugs
Output @ Frequency:	.080 HP @ 60 HZ	Locked Bearing Indicator:	No Locked Bearing
Synchronous Speed @ Frequency:	1800 RPM @ 60 HZ	Motor Lead Quantity/Wire Size:	6 @ 18 AWG
Voltage @ Frequency:	115.0 V @ 60 HZ	Motor Lead Exit:	Ko Box
	230.0 V @ 60 HZ	Motor Lead Termination:	Flying Leads
Agency Approvals:	CSA	Motor Type:	3310L
	UR	Mounting Arrangement:	F1
Auxillary Box:	No Auxillary Box	Power Factor:	52
Auxillary Box Lead Termination:	None	Product Family:	General Purpose
Base Indicator:	Rigid	Pulley End Bearing Type:	Ball
Bearing Grease Type:	Polyrex EM (-20F +300F)	Pulley Face Code:	Standard
Blower:	None	Pulley Shaft Indicator:	Standard
Current @ Voltage:	1.000 A @ 230.0 V	Rodent Screen:	None
	1.150 A @ 208.0 V	RoHS Status:	ROHS COMPLIANT
	2.000 A @ 115.0 V	Shaft Extension Location:	Pulley End

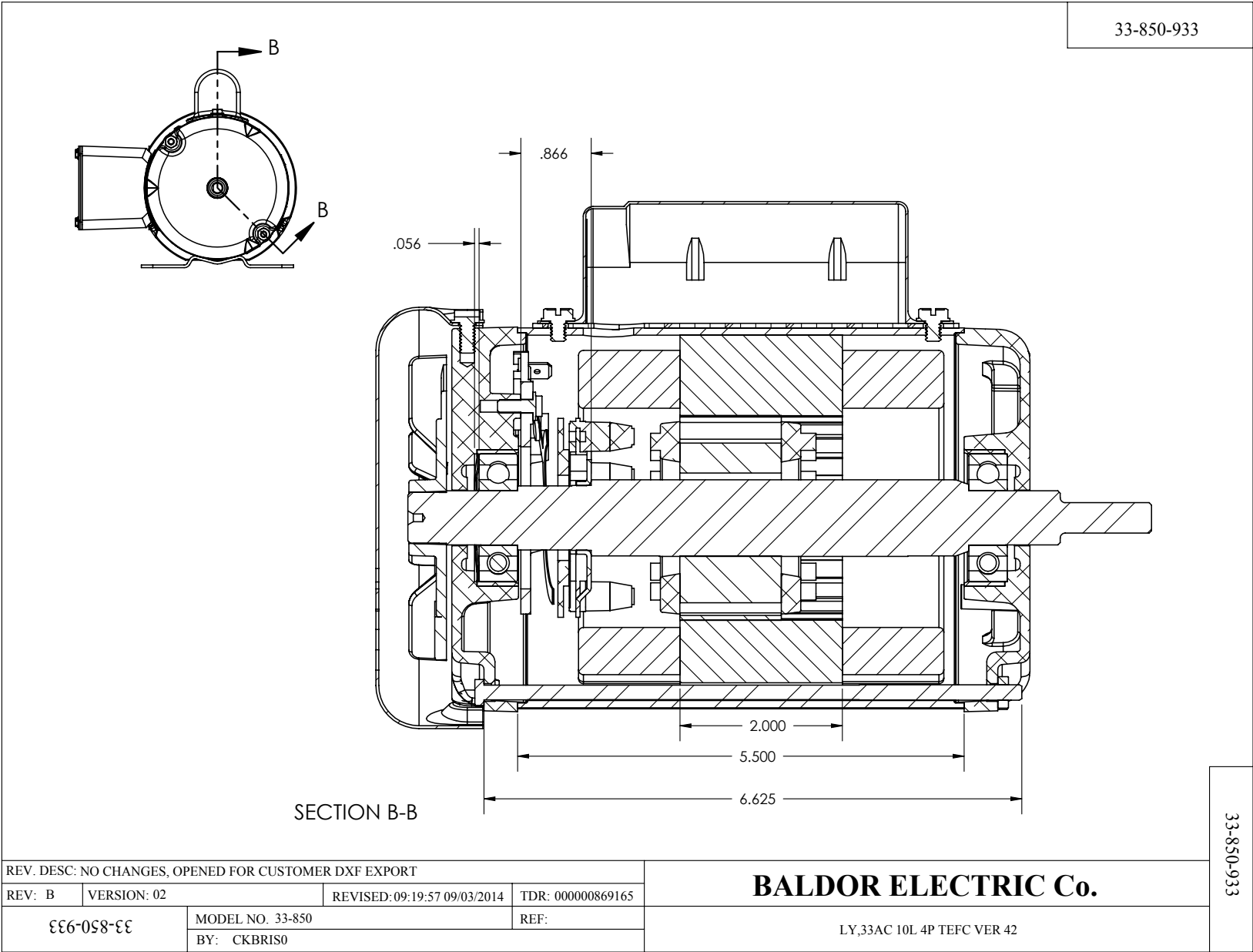
Design Code:	-	Shaft Ground Indicator:	No Shaft Grounding
Drip Cover:	No Drip Cover	Shaft Rotation:	Reversible
Duty Rating:	CONT	Shaft Slinger Indicator:	No Slinger
Electrically Isolated Bearing:	Not Electrically Isolated	Speed Code:	Single Speed
Feedback Device:	NO FEEDBACK	Motor Standards:	NEMA
Feedback Signal:	NONE	Starting Method:	Direct on line
Front Face Code:	Standard	Thermal Device - Bearing:	None
Front Shaft Indicator:	None	Thermal Device - Winding:	None
Heater Indicator:	No Heater	Vibration Sensor Indicator:	No Vibration Sensor

Nameplate NP1256L

CAT.NO.	L3351										
SPEC.	33-850-933										
HP	.08										
VOLTS	115/230										
AMP	2/1										
RPM	1725										
FRAME	42				HZ	60				PH	1
SER.F.	1.40			CODE	M	DES	-		CLASS	B	
NEMA-NOM-EFF	44			PF	52						
RATING	40C AMB-CONT										
CC				USABLE AT 208V						1.15	
DE	6203			ODE							
ENCL	TEFC			SN							
	SFA 2.2/1.1										

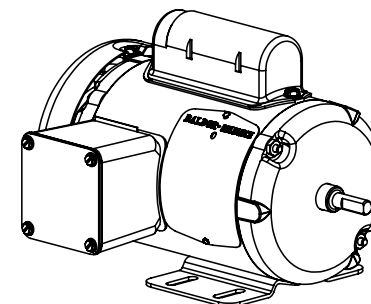
No performance data has been
assigned to this product.





ITEM NO.	PART NUMBER	33-850-933/QTY.
1	33EP3100A02	1
2	33SH7158A01	1
3	BG6203	2
4	33RA4110A00A01	1
5	RS9005	1
6	33SA9210A32	1
7	33EP3100A01	1
8	HW5100A03	1
9	SP5073	1
10	51XB1016A07	2
11	51XB1016A04	2
12	NS2512A01	1
13	HA3100A	2
14	34CB3002A64	1
15	11XW1032G06	1
16	34GS1031A01	1
17	34CB4517	1
18	34GS3000	1
19	34CB4800	1
20	NS2500A01	1
21	33FN3000	1
22	12XN0832A16	1
23	XY1032A02	3
24	HW1003A08	1
25	33FH4001A01	1
26	LB1119	1
27	51XT0832A07	6
28	99XM0440S01	2
29	NP1256	1
30	33 Frame A01	1
31	51XB1016A06	3

33-850-933



33-850-933

REV. DESC: NO CHANGES, OPENED FOR CUSTOMER DXF EXPORT

REV: B VERSION: 02 REVISED: 09:19:57 09/03/2014 TDR: 000000869165

££6-058-££

MODEL NO. 33-850

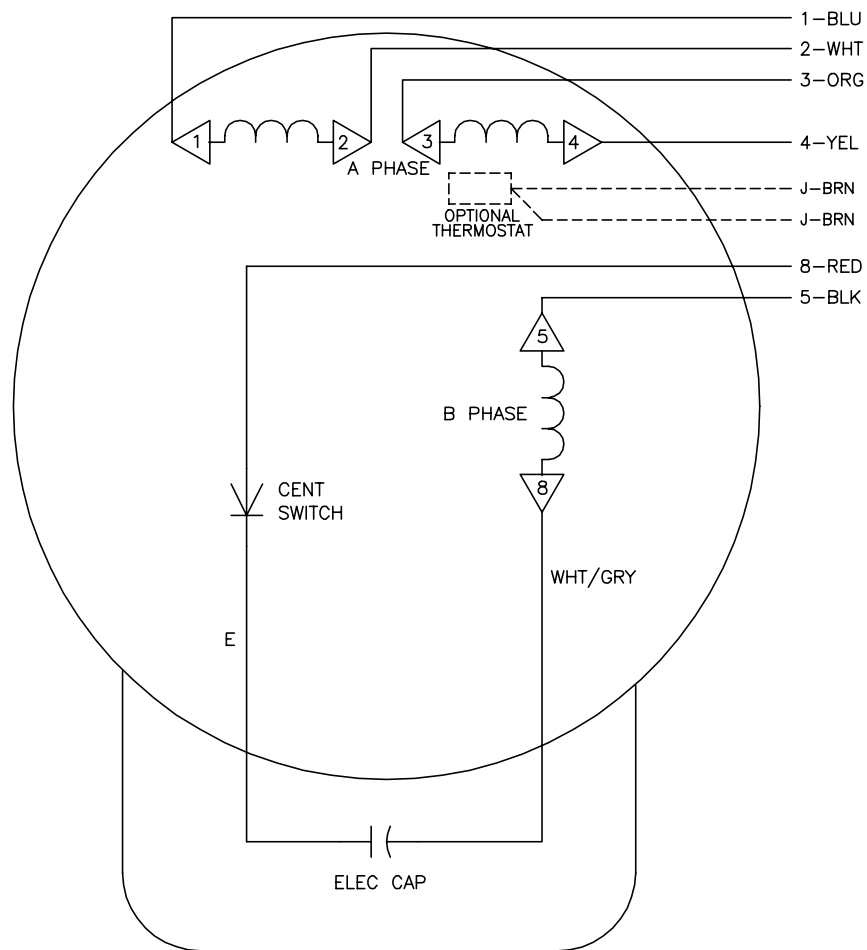
BY: CKBRIS0

REF:

BALDOR ELECTRIC Co.

LY_33AC 10L 4P TEFC VER 42

CD0001A10



	LINE A	LINE B	JOIN
HIGH STD	1	4,5	2,3,8
HIGH OPP	1	4,8	2,3,5
LOW STD	1,3,8	2,4,5	—
LOW OPP	1,3,5	2,4,8	—

NOTES:

1. STANDARD ROTATION IS CCW FACING LEAD END
2. OPTIONAL THERMOSTAT IS PROVIDED WHEN SPECIFIED.
3. MULTIPLE CAPACITORS ARE CONNECTED IN PARALLEL UNLESS OTHERWISE SPECIFIED.
4. LEAD COLORS ARE OPTIONAL. LEADS MUST ALWAYS BE NUMBERED AS SHOWN.
5. = MAGNET WIRE COIL END WITH I.D. NUMBER

REV. DESC: NEW		
REV. LTR: —	VERSION: 00	TDR: 000000435106
01V100000	FILE: \CKA\00032\277	REVISED: 10:15:16 06/19/2007
	MTL: —	BY: CKNATLO

Baldor • Dodge • Reliance

TYPE L, DV, REV, 6 LD, CK

CD0001A10