

BALDOR® • ***RELIANCE***

Product Information Packet

D5003R

3HP, 1750RPM, DC, 1811ATZ, DPG,

| Part Detail | | | | | | | |
|-------------|----|-------------|-------|----------------|----|---------------|------------|
| Revision: | F | Status: | PRD/A | Change #: | | Proprietary: | No |
| Type: | DC | Prod. Type: | | Elec. Spec: | | CD Diagram: | |
| Enclosure: | | Mfg Plant: | | Mech. Spec: | | Layout: | 609980-001 |
| Frame: | | Mounting: | | Poles: | 00 | Created Date: | 02-17-2014 |
| Base: | | Rotation: | R | Insulation: | | Eff. Date: | 10-28-2016 |
| Field Type: | | Literature: | | Elec. Diagram: | | Replaced By: | |

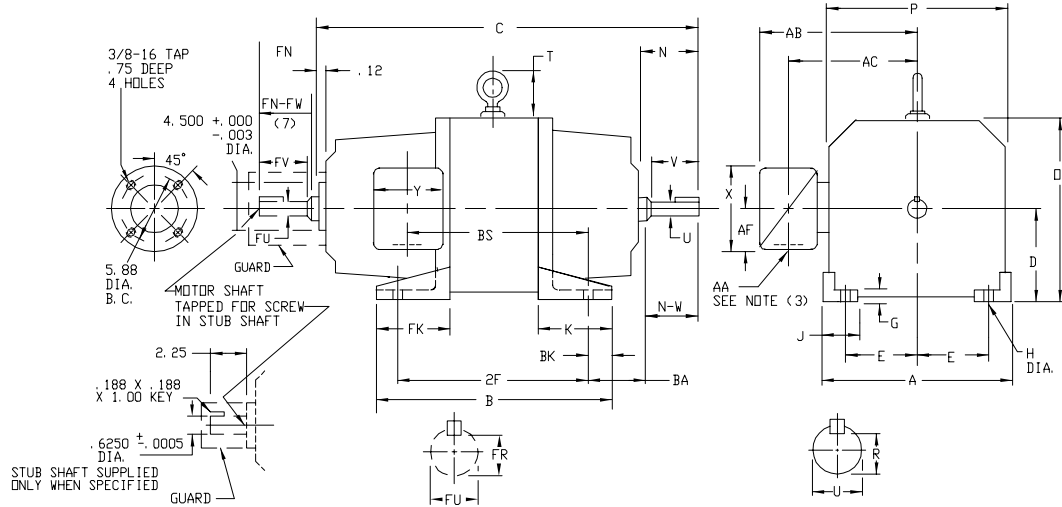
| Specs | | | |
|---------------------------|-------------------------|--|--|
| Frame: | C1811ATZ | | |
| Frame Material: | Exposed Laminations | | |
| Agency Approvals: | CCSA US | | |
| Bearing Grease Type: | Polyrex EM (-20F +300F) | | |
| Drip Cover: | No Drip Cover | | |
| Feedback Device: | NO FEEDBACK | | |
| Frame Prefix: | C | | |
| Heater Indicator: | No Heater | | |
| Lifting Lugs: | Standard Lifting Lugs | | |
| Shaft Extension Location: | Pulley End | | |
| Shaft Ground Indicator: | No Shaft Grounding | | |
| Shaft Slinger Indicator: | No Slinger | | |
| Motor Standards: | NEMA | | |

609980-001

INDUSTRIAL DIRECT CURRENT MOTORS AND GENERATORS - RPM III

MOUNTING: FOOT ENCLOSURE: DRIP-PROOF FULLY-GUARDED COOLING: SELF-VENTILATED ACCESSORIES: PROVISION FOR TACHOMETER MOUNTING ONLY WHEN SPECIFIED
 METHOD OF DRIVE: COUPLED OR BELTED SPLASHPROOF, TOTALLY ENCLOSED NON-VENTILATED

FRAMES C180ATZ



- (1) 'D' DIMENSION WILL NOT BE EXCEEDED. SHIMS UP TO .03 INCHES IN THICKNESS ARE USUALLY REQUIRED FOR COUPLED OR GEARED MACHINES.
 - (2) 'U' AND 'FU' VARY +.000 - .0005
 - (3) TERMINAL BOX CAN BE ROTATED FOR LEAD OUTLET AT TOP, SIDES OR BOTTOM.
FOR 'X/P' TERMINAL BOX DIMENSIONS SEE 609989-1.
FOR MILL TYPE TERMINAL BOX DIMENSIONS SEE 609989-2.
 - (4) 'R' AND 'FR' VARY +.000, -.015.
 - (5) AA CONDUIT, TERMINAL BOX PROVIDED WITH DOUBLE KNOCKOUT.
 - (6) AA PIPE TAP.
 - (7) OPPOSITE DRIVE END SHAFT SUPPLIED ONLY WHEN SPECIFIED.
 - (8) WHEN THE MOTOR APPLICATION DOES NOT REQUIRE THE USE OF OPP. DRIVE END, ADD .25 TO 'C' DIM. FOR BRACKET COVER.
- TERMINAL BOX LOCATED ON OPPOSITE SIDE WHEN F-2, W-1, W-4, W-5, W-7 OR C-1 MOUNTING IS SPECIFIED. BOX LOCATED ON TOP WHEN SPECIFIED.
- MOTOR WEIGHT MAY VARY 15% FOR NON-STANDARD RATINGS AND/OR ACCESSORIES.
- IF MOUNTING CLEARANCE DETAILS ARE REQUIRED, CONSULT FACTORY.

DIMENSIONS ARE IN INCHES

| FRAME | A | D(1) | E | G | H | J | D | P | T | BA | K | FK | BK |
|-------------------|------|------|------|-----|-----|------|------|------|------|------|------|------|-----|
| C1811ATZ-C1812ATZ | 9.00 | 4.50 | 3.75 | .31 | .44 | 1.50 | 8.88 | 8.75 | 1.88 | 2.75 | 4.38 | 4.38 | .50 |

| FRAME | C(8) | B | BS | 2F | N | N-V | U(2) | V | R(4) | SO. | LGTH | FN | FN-FW | FU(2) | FV | FR(4) | SO. | LGTH. | LBS. |
|----------|-------|-------|-------|-------|------|------|--------|------|-------|------|------|------|-------|--------|------|-------|-------|-------|------|
| C1811ATZ | 23.94 | 14.00 | 11.00 | 12.50 | 3.00 | 2.75 | 1.3750 | 2.50 | 1.201 | .312 | 1.75 | 2.44 | 2.25 | 1.1250 | 2.00 | .986 | 1.250 | 1.38 | 175 |
| C1812ATZ | 25.44 | 15.50 | 12.50 | 14.00 | 3.00 | 2.75 | 1.3750 | 2.50 | 1.201 | .312 | 1.75 | 2.44 | 2.25 | 1.1250 | 2.00 | .986 | 1.250 | 1.38 | 210 |

| STEEL TERMINAL BOX DIMENSIONS | | | | | | | | | | | | | | | |
|-------------------------------|-----------|---------------|------|------|------|------|-------------|-----------------|---------------|------|------|------|-------------|------|------------|
| FRAME | MAX. AMPS | STANDARD SIZE | | | | | PART NUMBER | ONE SIZE LARGER | | | | | PART NUMBER | | |
| | | AA(5) | AB | AC | AF | X | Y | | AA(5) | AB | AC | AF | X | Y | |
| C180ATZ | 40 | 3/4 & 1" | 7.31 | 5.75 | 1.94 | 4.38 | 5.00 | 705028-1-R | 1-1/4 & 1-1/2 | 8.31 | 6.31 | 2.50 | 5.50 | 6.12 | 705029-1-R |
| | 96 | 1-1/4 & 1-1/2 | 8.31 | 6.31 | 2.50 | 5.50 | 6.12 | 705029-1-R | 2" & 2-1/2 | 9.44 | 6.69 | 3.19 | 7.00 | 7.62 | 705030-1-R |

| CAST IRON TERMINAL BOX DIMENSIONS | | | | | | | | | | | | | | | |
|-----------------------------------|----------|---------------|-------|------|------|------|-------------|-----------------|-------|-------|------|------|-------------|------|------------|
| FRAME | MAX AMPS | STANDARD SIZE | | | | | PART NUMBER | ONE SIZE LARGER | | | | | PART NUMBER | | |
| | | AA(6) | AB | AC | AF | X | Y | | AA(6) | AB | AC | AF | X | Y | |
| C180ATZ | 18 | 3/4 | 9.38 | 7.38 | 2.50 | 5.00 | 5.75 | 705028-2-S | 1 | 9.38 | 7.38 | 2.50 | 5.00 | 5.75 | 705028-2-T |
| | 40 | 1 | 9.38 | 7.38 | 2.50 | 5.00 | 5.75 | 705028-2-T | 1-1/2 | 10.31 | 7.88 | 3.00 | 6.00 | 7.00 | 705029-2-R |
| | 96 | 1-1/2 | 10.31 | 7.88 | 3.00 | 6.00 | 7.00 | 705029-2-R | 2 | 10.31 | 7.88 | 3.00 | 6.00 | 7.00 | 705029-2-S |

CUSTOMER IS RESPONSIBLE FOR DETERMINING THAT BALDOR'S PRODUCT WILL PERFORM SUITABLY IN THE INTENDED APPLICATION.

| | | | | | |
|----------------------------|------------------------------|------------|-------------------|--|--|
| REV. DESC: REVISED DRAWING | | | TDR: 000000870292 | | |
| REV. LTR: A | VERSION: 01 | | | | |
| FILE: \RSN\00029\768 | REVISED: 08:54:53 09/23/2014 | BY: RSNPSB | | | |
| MTL: - | | | | | |

BALDOR

DIMENSION DRAWING, C180ATZ, DPP, TENV, FOOT MTG.
SH 1 of 1

609980-001