

BALDOR® • **RELIANCE**

Product Information Packet

CTM1764T

30/7.5HP, 1760/870RPM, 3PH, 60HZ, 286T, 1050M

Part Detail							
Revision:	D	Status:	PRD/A	Change #:		Proprietary:	No
Type:	AC	Elec. Spec:	10WGW469	CD Diagram:	CD0032	Mfg Plant:	
Mech. Spec:	10H161	Layout:	10LYH161	Poles:	04/08	Created Date:	08-15-2014
Base:	RG	Eff. Date:	02-21-2017	Leads:	6#10		

Specs			
Catalog Number:	CTM1764T	Insulation Class:	F
Enclosure:	TEFC	Inverter Code:	Not Inverter
Frame:	286T	KVA Code:	G
Frame Material:	Iron	Lifting Lugs:	Standard Lifting Lugs
Output @ Frequency:	7.500 HP @ 60 HZ	Locked Bearing Indicator:	Locked Bearing
	30.000 HP @ 60 HZ	Motor Lead Quantity/Wire Size:	6 @ 10 AWG
Synchronous Speed @ Frequency:	1800 RPM @ 60 HZ	Motor Lead Exit:	Ko Box
Voltage @ Frequency:	460.0 V @ 60 HZ	Motor Lead Termination:	Flying Leads
XP Class and Group:	None	Motor Type:	1050M
XP Division:	Not Applicable	Mounting Arrangement:	F1
Agency Approvals:	UR	Product Family:	Chemical Processing (Not DC)
	CSA	Pulley End Bearing Type:	Ball
Auxillary Box:	No Auxillary Box	Pulley Face Code:	Standard
Auxillary Box Lead Termination:	None	Pulley Shaft Indicator:	Standard
Base Indicator:	Rigid	Rodent Screen:	None
Bearing Grease Type:	Polyrex EM (-20F +300F)	Shaft Extension Location:	Pulley End
Blower:	None	Shaft Ground Indicator:	No Shaft Grounding
Current @ Voltage:	36.000 A @ 460.0 V	Shaft Rotation:	Reversible

Design Code:	B	Shaft Slinger Indicator:	Shaft Slinger
Drip Cover:	No Drip Cover	Speed Code:	2S-1W-VT
Duty Rating:	CONT	Motor Standards:	NEMA
Electrically Isolated Bearing:	Not Electrically Isolated	Starting Method:	Direct on line
Feedback Device:	NO FEEDBACK	Thermal Device - Bearing:	None
Front Face Code:	Standard	Thermal Device - Winding:	None
Front Shaft Indicator:	None	Vibration Sensor Indicator:	No Vibration Sensor
Heater Indicator:	No Heater	Winding Thermal 1:	None
		Winding Thermal 2:	None

Nameplate NP1258E											
CAT.NO.	CTM1764T										
SPEC.	10H161W469G1										
HP	30/7.5										
VOLTS	460										
AMP	36/13										
RPM	1760/870										
FRAME	286T				HZ	60		PH	3		
SER.F.	1.15			CODE	G		DES	B		CL	F
NEMA-NOM-EFF					PF						
RATING	40C AMB-CONT										
CC									USABLE AT 208V		
DE	6311				ODE	6311					
ENCL	TEFC			SN							

Nameplate NP0090E

FRONT 6311

PULLEY 6311

LUBRICATE WITH

GREASE POLYREX EM

AC Induction Motor Performance Data

Record # 34539 - Typical performance - not guaranteed values

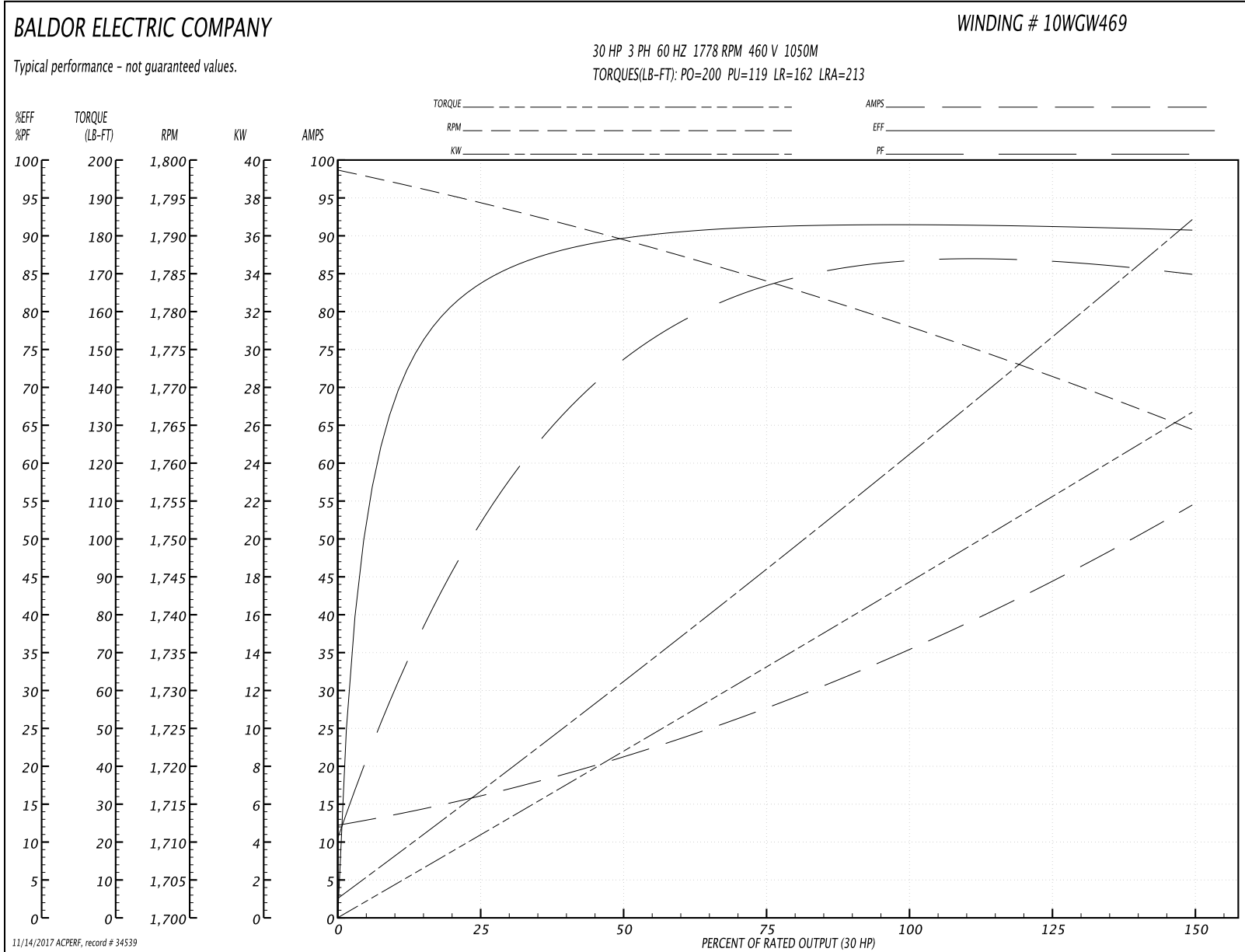
Winding: 10WGW469-R007	Type: 1050M	Enclosure: TEFC
-------------------------------	--------------------	------------------------

Nameplate Data				460 V, 60 Hz: High Speed Connection	
Rated Output (HP)	30/7.5			Full Load Torque	89 LB-FT
Volts	460			Start Configuration	direct on line
Full Load Amps	36/13			Breakdown Torque	200 LB-FT
R.P.M.	1760/870			Pull-up Torque	119 LB-FT
Hz	60	Phase	3	Locked-rotor Torque	162 LB-FT
NEMA Design Code	B	KVA Code	G	Starting Current	213 A
Service Factor (S.F.)	1.15			No-load Current	12.7 A
NEMA Nom. Eff.	0	Power Factor	0	Line-line Res. @ 25°C	0.318 Ω
Rating - Duty	40C AMB-CONT			Temp. Rise @ Rated Load	88°C
S.F. Amps				Temp. Rise @ S.F. Load	102°C

Load Characteristics 460 V, 60 Hz, 30 HP

% of Rated Load	25	50	75	100	125	150	S.F.
Power Factor	55	75	83	86	86	85	86
Efficiency	83.8	89.6	91.2	91.5	91.3	90.7	91.4
Speed	1794	1789	1784	1778	1772	1764	1774
Line amperes	15.5	21.1	28	36	44.6	54.2	41.2

Performance Graph at 460V, 60Hz, 30.0HP Typical performance - Not guaranteed values



AC Induction Motor Performance Data

Record # 34540 - Typical performance - not guaranteed values

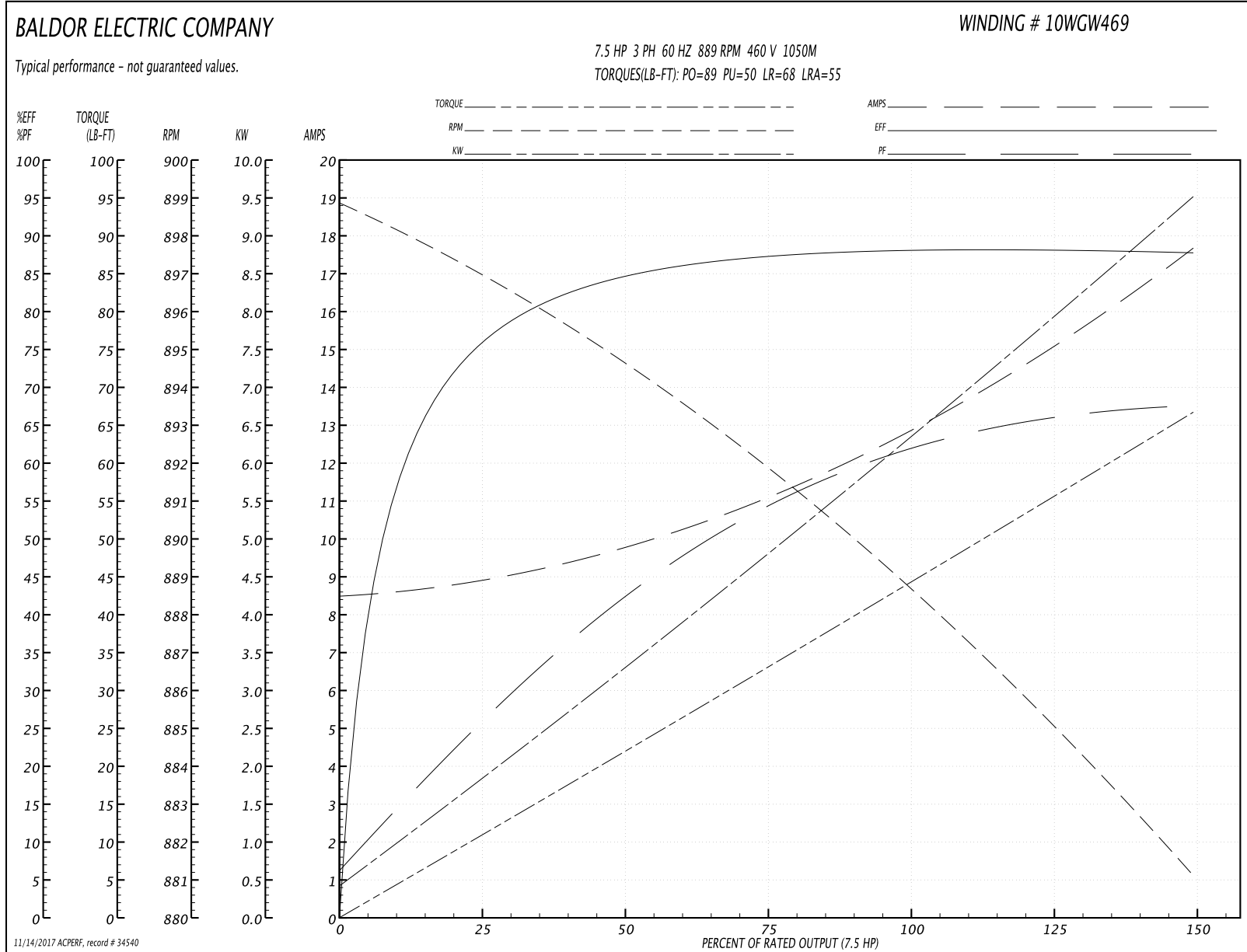
Winding: 10WGW469-R007	Type: 1050M	Enclosure: TEFC
-------------------------------	--------------------	------------------------

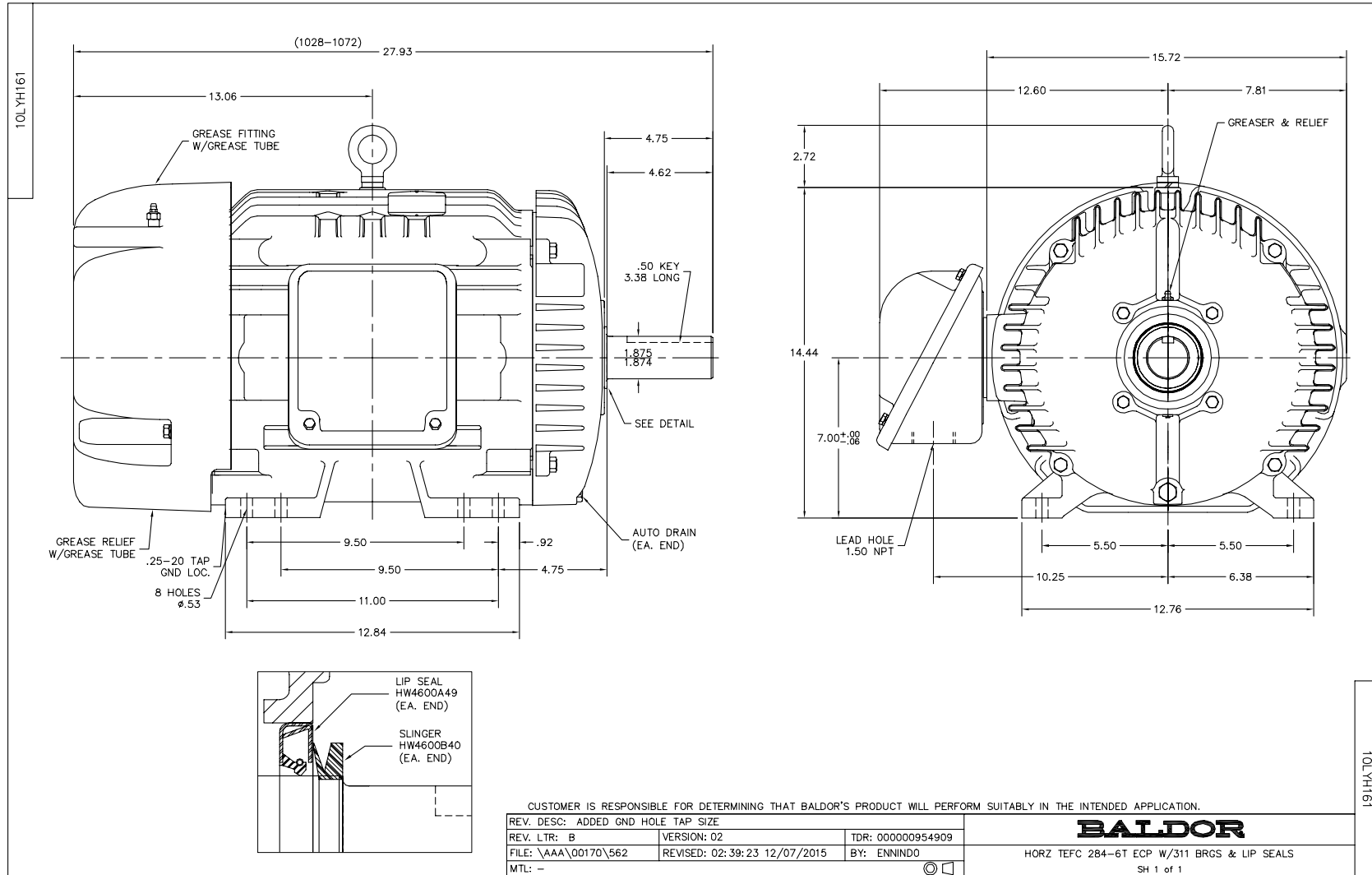
Nameplate Data				460 V, 60 Hz: Low Speed Connection	
Rated Output (HP)	30/7.5			Full Load Torque	44.5 LB-FT
Volts	460			Start Configuration	direct on line
Full Load Amps	36/13			Breakdown Torque	89 LB-FT
R.P.M.	1760/870			Pull-up Torque	50 LB-FT
Hz	60	Phase	3	Locked-rotor Torque	68 LB-FT
NEMA Design Code	B	KVA Code	G	Starting Current	55 A
Service Factor (S.F.)	1.15			No-load Current	8.5 A
NEMA Nom. Eff.	0	Power Factor	0	Line-line Res. @ 25°C	1.31 Ω
Rating - Duty	40C AMB-CONT			Temp. Rise @ Rated Load	45°C
S.F. Amps				Temp. Rise @ S.F. Load	52°C

Load Characteristics 460 V, 60 Hz, 7.5 HP

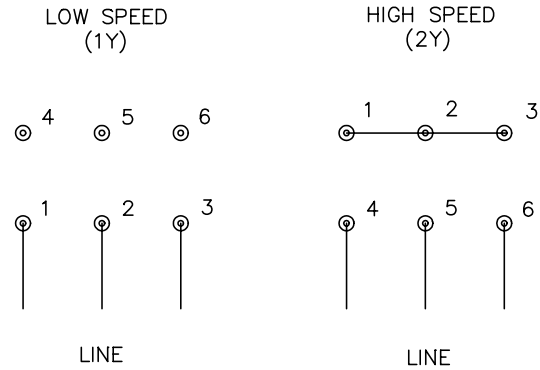
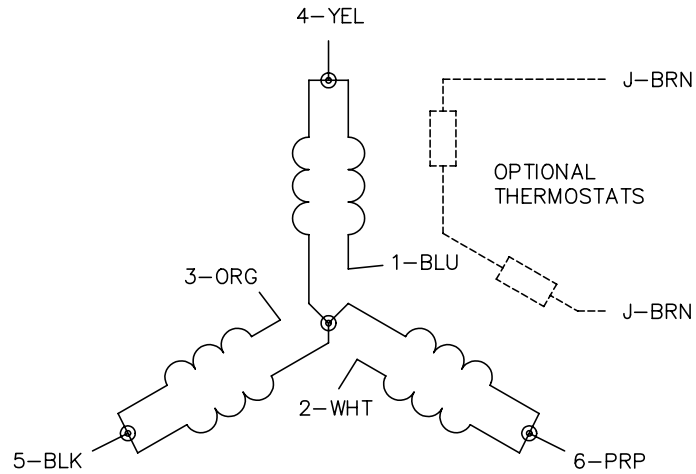
% of Rated Load	25	50	75	100	125	150	S.F.
Power Factor	26	43	55	61	66	68	64
Efficiency	75.5	84.4	87.3	88.3	88.3	87.6	88.3
Speed	897	894	892	889	885	881	887
Line amperes	8.9	9.8	11.1	13	15	17.7	14.2

Performance Graph at 460V, 60Hz, 7.5HP Typical performance - Not guaranteed values





CD0032



NOTES:

1. INTERCHANGE ANY TWO LINE LEADS TO REVERSE ROTATION.
2. OPTIONAL THERMOSTATS ARE PROVIDED WHEN SPECIFIED.
3. ACTUAL NUMBER OF INTERNAL PARALLEL CIRCUITS MAY BE A MULTIPLE OF THOSE SHOWN ABOVE.
4. LEAD COLORS ARE OPTIONAL. LEADS MUST ALWAYS BE NUMBERED AS SHOWN.

REV. DESC: REVISE TO SHOW OPTIONAL COLORS			
REV. LTR: E	BY: JLP	REVISED: 01/22/99 8:27	TDR: 0171435
CD0032		FILE: AAA00005145	MDL: -
		MTL: -	

BALDOR ELECTRIC Co.

3PH, SV, 6 LEADS, 2-SPEED 1-WINDING VARIABLE TORQUE

CD0032