

BALDOR® • RELIANCE

Product Information Packet

ECP84314T-5

60HP, 1780RPM, 3PH, 60HZ, 364T, TEFC, FOOT

Part Detail							
Revision:	N	Status:	PRD/A	Change #:		Proprietary:	No
Type:	AC	Elec. Spec:	A36WG0722	CD Diagram:	416820-036	Mfg Plant:	
Mech. Spec:		Layout:	617428-005	Poles:	04	Created Date:	10-19-2010
Base:		Eff. Date:	02-21-2017	Leads:	3#4		

Specs			
Catalog Number:	ECP84314T-5	Feedback Device:	NO FEEDBACK
Enclosure:	TEFC	Heater Indicator:	No Heater
Frame:	364T	Insulation Class:	F
Frame Material:	Iron	Inverter Code:	Inverter Ready
Output @ Frequency:	60.000 HP @ 60 HZ	KVA Code:	G
Synchronous Speed @ Frequency:	1800 RPM @ 60 HZ	Lifting Lugs:	Standard Lifting Lugs
Voltage @ Frequency:	575.0 V @ 60 HZ	Motor Lead Quantity/Wire Size:	3 @ 4 AWG
XP Class and Group:	CLI GP A,B,C,D	Motor Type:	A36062M
XP Division:	Division II	Mounting Arrangement:	F1
Agency Approvals:	UR	Power Factor:	87
	CSA EEV	Pulley End Bearing Type:	Ball
	CCSA US	Pulley Face Code:	Standard
Auxillary Box:	No Auxillary Box	Shaft Ground Indicator:	No Shaft Grounding
Base Indicator:	Rigid	Shaft Rotation:	Phase Seq-Std Rot (CCWODE)
Bearing Grease Type:	Polyrex EM (-20F +300F)	Shaft Slinger Indicator:	No Slinger
Constant Torque Speed Range:	10-60	Speed Code:	Single Speed
Current @ Voltage:	54.400 A @ 575.0 V	Motor Standards:	None
Design Code:	B	Starting Method:	Direct on line

Drip Cover:	No Drip Cover	Thermal Device - Bearing:	None
Duty Rating:	CONT	Thermal Device - Winding:	None
		XP Temp Code:	T3

Nameplate NP3237									
CAT NO	ECP84314T-5		SPEC NO.	P36G5242		DESIGN	B		
HP	60	AMPS	54.4	VOLTS	575	SF	1.15	DUTY	CONT
FRAME SIZE	364T	RPM	1780	HZ	60	AMB	40	PH	3
D.E. BRG.DATA	6313	O.D.E. BRG.DATA	6313	TYPE	P	ENCL	TEFC	CODE	G
D.E. BRG.	65BC03J30X	POWER FACTOR	87	NEMA-NOM-EFFICIENCY	95		INSUL.CLASS	F	
O.D.E. BRG.	65BC03J30X	MAX CORR KVAR	10.0	GUARANTEED EFFICIENCY	94.5				
3/4 LOAD EFF.	95.3	IP	56	TEMP	=	200			
TEMP CODE	T3	CT HZ	10-60	VT HZ	0-60				
CHP HZ	60-90	INVERTER-TEMP-CODE	T3	MOTOR WEIGHT	937				
SER.NO.									

Nameplate 000613007EX

CAT NO	ECP84314T-5	SPEC NO.	P36G5242
NO. ROTOR BARS	47	GREASE TYPE	POLYREX EM
NO. SLOTS	60	NL AMPS AT RATED VOLTAGE	15.2
5 YEAR WARRANTY		WINDING RES @25 C	.1711
MFG. DATE		SER.NO	
			OHMS

REL. S. O.	FRAME	HP	TYPE	PHASE/HERTZ	RPM	VOLTS
	364HP	60	P	3/60	1780	575
AMPS	DUTY	AMB °C/INSUL.	S. F.	NEMA DESIGN	CODE LETTER	ENCL.
54.4	CONT	40/F	1.15	B	G	TEFC
E/S	ROTOR	TEST S. O.	TEST DATE	STATOR RES. @25 °C OHMS (BETWEEN LINES)		
492282	418141-35-YE	---	---	.173		

PERFORMANCE

LOAD	HP	AMPERES	RPM	POWER FACTOR %	EFFICIENCY %
NO LOAD	0	16.1	1800	4.67	0
1/4	15.0	20.7	1795	58.6	93.0
2/4	30.0	30.0	1791	78.7	95.2
3/4	45.0	41.6	1786	85.0	95.3
4/4	60.0	54.4	1781	87.0	95.0
5/4	75.0	68.1	1775	87.5	94.3

SPEED TORQUE

	RPM	TORQUE % FULL LOAD	TORQUE LB.-FT.	AMPERES
LOCKED ROTOR	0	181	320	344
PULL UP	720	161	285	316
BREAKDOWN	1703	251	445	195
FULL LOAD	1781	100	177	54.4

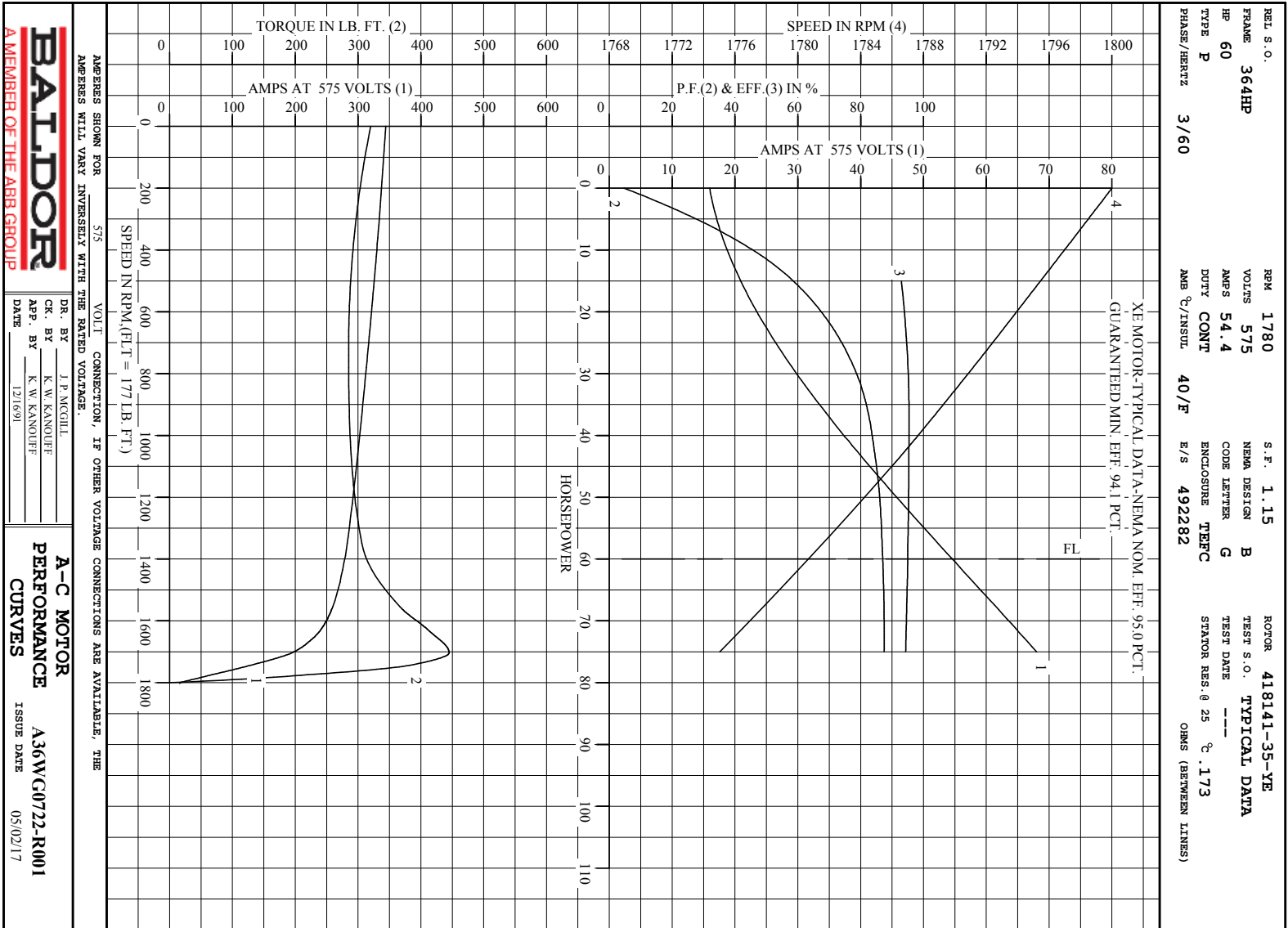
AMPERES SHOWN FOR 575. VOLT CONNECTION. IF OTHER VOLTAGE CONNECTIONS ARE AVAILABLE, THE AMPERES WILL VARY INVERSELY WITH THE RATED VOLTAGE

REMARKS : TYPICAL DATA
 XE MOTOR-TYPICAL DATA-NEMA NOM. EFF. 95.0 PCT.
 GUARANTEED MIN. EFF. 94.1 PCT.



DR. BY J. P. MCGILL
 CK. BY K. W. KANOUE
 APP. BY K. W. KANOUE
 DATE 12/16/91

A-C MOTOR PERFORMANCE DATA
 A36WG0722-R001
 ISSUE DATE 05/02/17

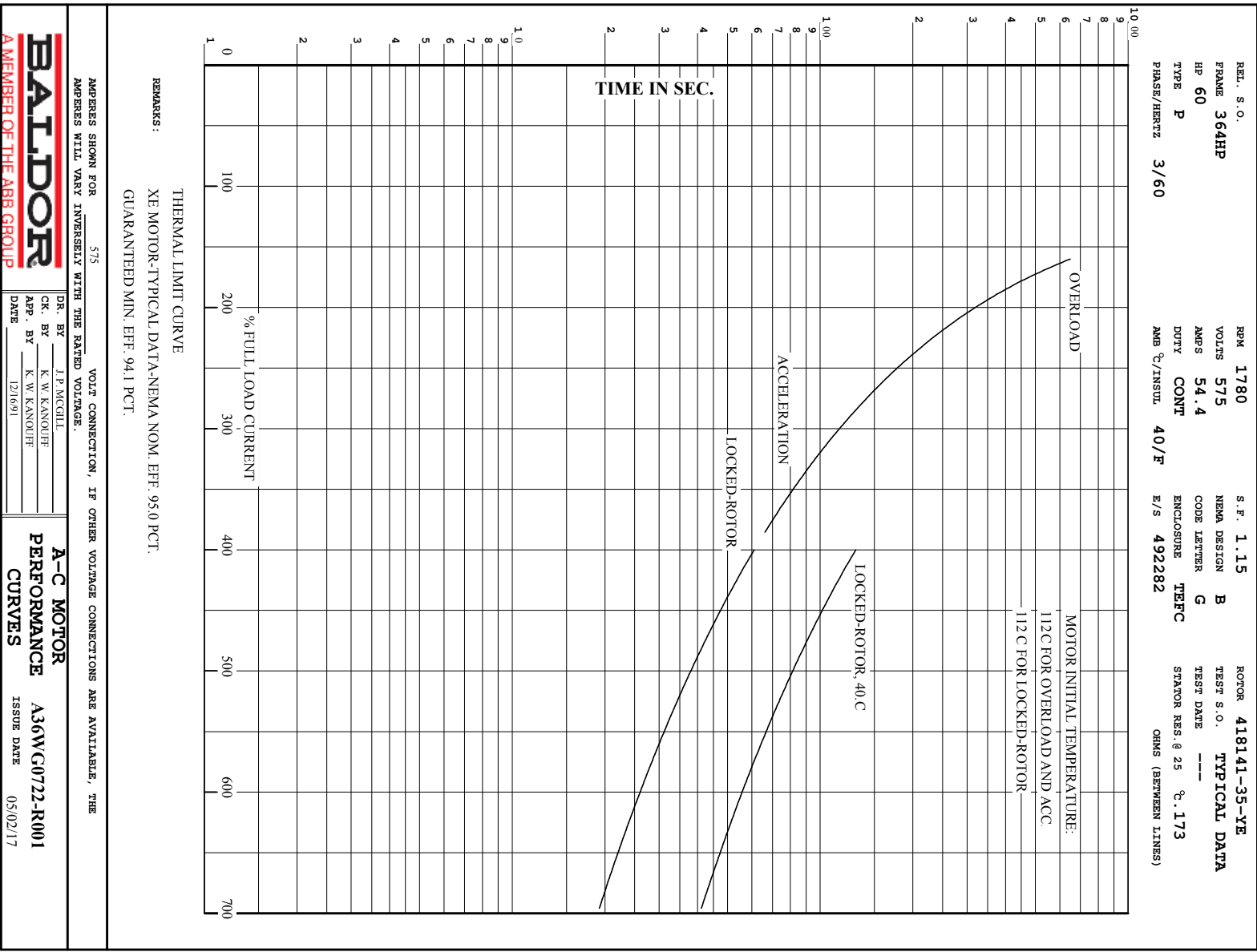


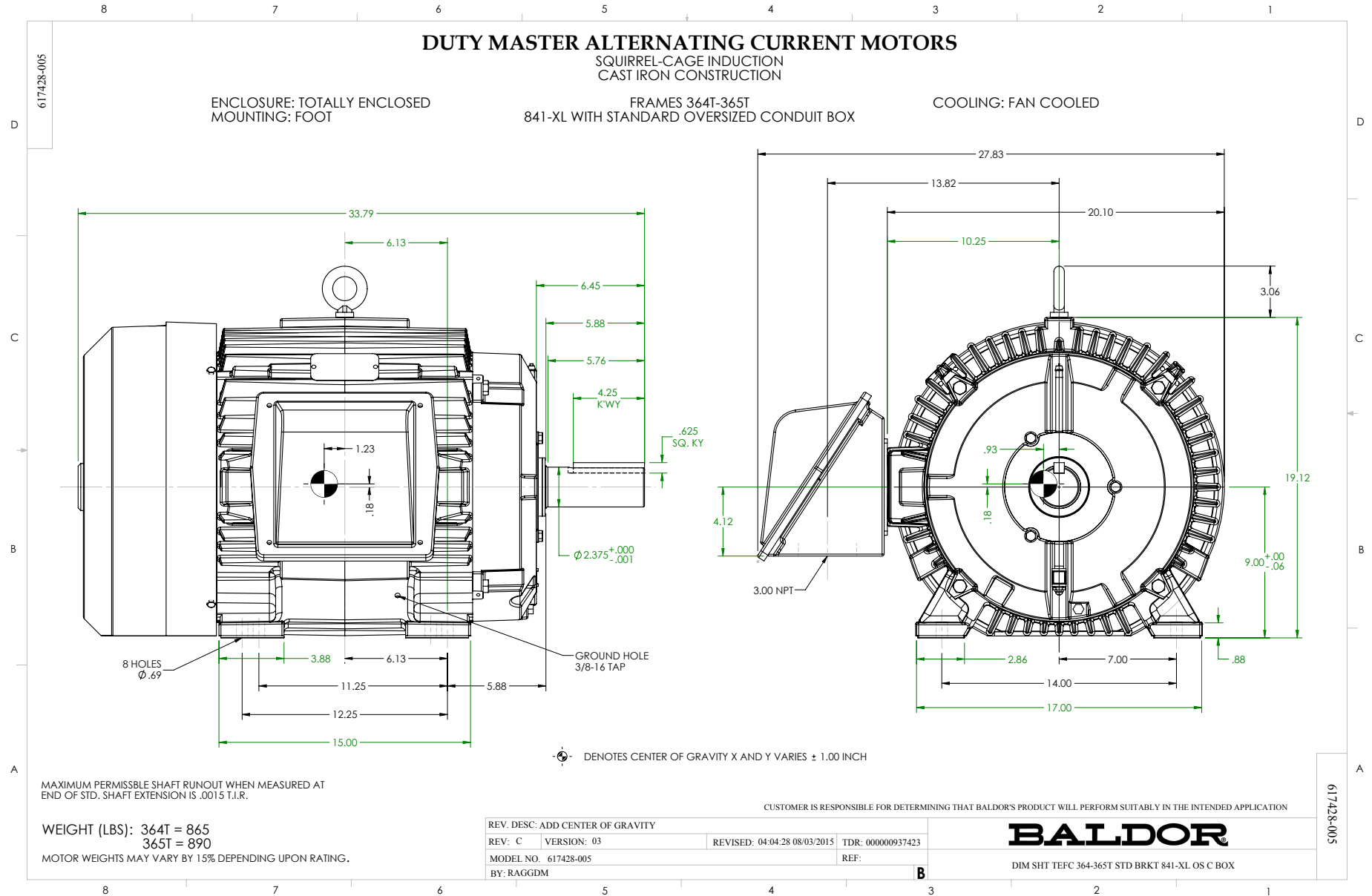
BALDOR
A MEMBER OF THE ABB GROUP

DR. BY J. P. MCCULL
CK. BY K. W. KANOUFF
APP. BY K. W. KANOUFF
DATE 12/16/91

A-C MOTOR
PERFORMANCE A36W00722-R001
CURVES ISSUE DATE 05/02/17

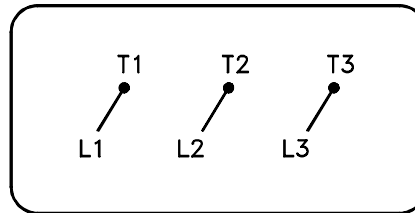
Printed on 5/2/17 14:44 @ bengap01.baldor.com





416820-036

A-C MOTOR
 CONNECTION DIAGRAM
 STANDARD 3 LEAD CONNECTED



(N.P. 1575-BA)

416820-036

REV. DESC: LOADED TO BUS, C/R 335225		
REV. LTR: -	VERSION: 00	TDR: 000000538207
FILE: \MGA\00000\682	REVISED: 11:54:06 04/30/2010	
MTL: -	BY: RAGRA	

BALDOR

CONN DIAG - STANDARD 3 LEAD

SH 1 of 1