

BALDOR® • ***RELIANCE***

Product Information Packet

VM3534

.33HP,1725RPM,3PH,60HZ,56C,3413M,TEFC,F1

| Part Detail | | | | | | | |
|-------------|------|-------------|-------|----------------|----------|---------------|------------|
| Revision: | S | Status: | PRD/A | Change #: | | Proprietary: | No |
| Type: | AC | Prod. Type: | 3413M | Elec. Spec: | 34WG0884 | CD Diagram: | |
| Enclosure: | TEFC | Mfg Plant: | | Mech. Spec: | 34A063 | Layout: | |
| Frame: | 56C | Mounting: | F1 | Poles: | 04 | Created Date: | |
| Base: | N | Rotation: | R | Insulation: | B | Eff. Date: | 06-06-2011 |
| Leads: | 9#18 | Literature: | | Elec. Diagram: | | Replaced By: | |

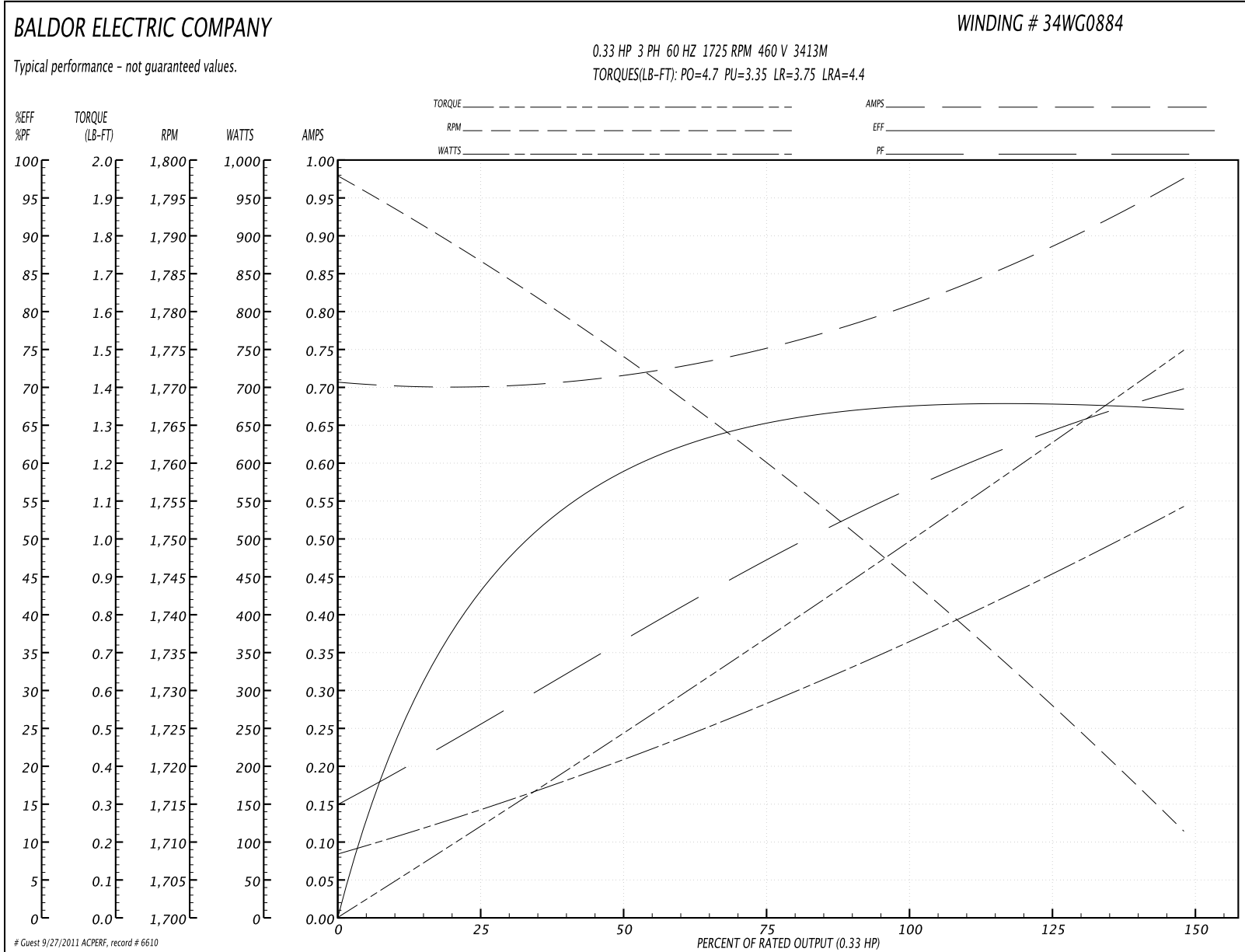
| Nameplate NP1256L | | | | | | | | | |
|-------------------|--------------|------|--|----------------|------|-----|---|-------|---|
| CAT.NO. | VM3534 | | | | | | | | |
| SPEC. | 34A63-884 | | | | | | | | |
| HP | .33 | | | | | | | | |
| VOLTS | 230/460 | | | | | | | | |
| AMP | 1.6/.8 | | | | | | | | |
| RPM | 1725 | | | | | | | | |
| FRAME | 56C | HZ | | | 60 | PH | 3 | | |
| SER.F. | 1.35 | CODE | | | M | DES | B | CLASS | B |
| NEMA-NOM-EFF | 68 | PF | | | 57 | | | | |
| RATING | 40C AMB-CONT | | | | | | | | |
| CC | | | | USABLE AT 208V | | 1.9 | | | |
| DE | 6203 | ODE | | | 6203 | | | | |
| ENCL | TEFC | SN | | | | | | | |
| | SFA 1.8/.9 | | | | | | | | |

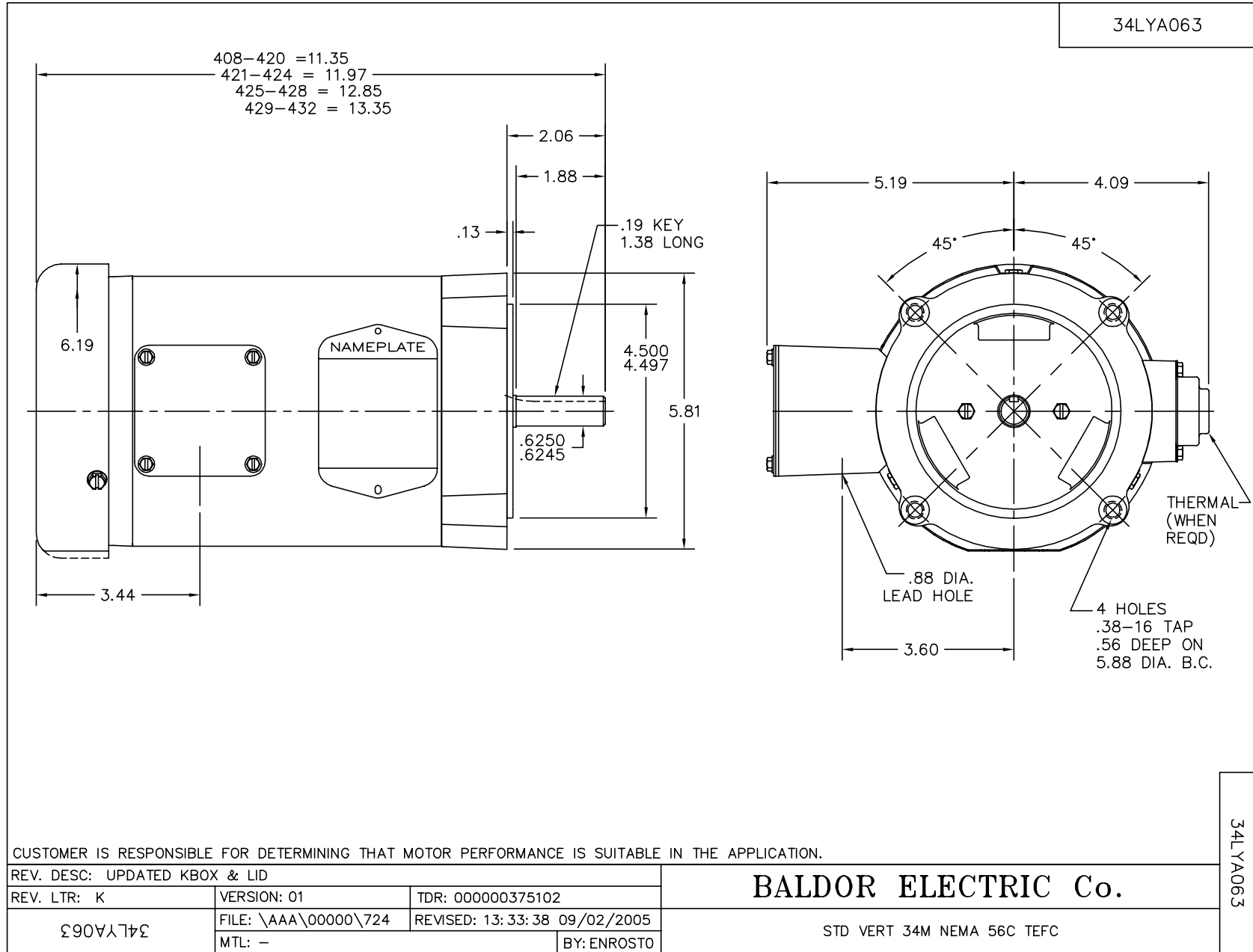
| Parts List | | |
|---------------|--|----------|
| Part Number | Description | Quantity |
| SA009892 | SA 34A63-884 | 1.000 EA |
| RA006337 | RA 34A63-884 | 1.000 EA |
| NS2512A01 | INSULATOR, CONDUIT BOX X | 1.000 EA |
| 34CB3002A | CB CAST W/.88 DIA HOLE | 1.000 EA |
| 34GS1029A01 | GASKET, CONDUIT BOX | 1.000 EA |
| 51XB1016A07 | 10-16 X 7/16 HXWSSLD SERTYB | 2.000 EA |
| 11XW1032G06 | 10-32 X .38, TAPTITE II, HEX WSHR SLTD U | 1.000 EA |
| 34EP3102A01SP | FR ENDPLATE, MACH | 1.000 EA |
| HW5100A03SP | WAVY WASHER (W1543-017) | 1.000 EA |
| 34EP3300A24SP | PU ENDPLATE, MACH | 1.000 EA |
| 51XN1032A20 | 10-32 X 1 1/4 HX WS SL SR | 2.000 EA |
| 34FN3002A01SP | EXTERNAL FAN, PLASTIC, .637/.639 HUB W/ | 1.000 EA |
| 51XW1032A06 | 10-32 X .38, TAPTITE II, HEX WSHR SLTD S | 3.000 EA |
| 34CB4517 | CB LID 4 MTG HOLES .22 DIA STAMPED, FOR | 1.000 EA |
| 34GS1031A01 | GASKET, FLAT CONDUIT BOX LID (LEXIDE) | 1.000 EA |
| 51XW0832A07 | 8-32 X .44, TAPTITE II, HEX WSHR SLTD SE | 4.000 EA |
| HW2501D13SP | KEY, 3/16 SQ X 1.375 | 1.000 EA |
| 34FH4002A01SP | IEC FH NO GREASER | 1.000 EA |
| HA7000A04 | KEY RETAINER 0.625 DIA SHAFTS | 1.000 EA |
| MG1000G27 | PAINT- S9282E CHARCOAL GREY 55 GALLONS | 0.014 GA |
| 10XF0440S02 | 04-40 X 1/8 TYPE F HEX HD STAINLESS STIC | 2.000 EA |
| HA3100A12 | THRUBOLT 10-32 X 7.375 | 4.000 EA |
| LB1125C01 | STD (STOCK) CARTON LABEL BALDOR WITH FLA | 1.000 EA |
| LC0005E01 | CONN.DIA./WARNING LABEL (LC0005/LB1119) | 1.000 EA |

| Parts List (continued) | | |
|------------------------|-------------------------------------|----------|
| Part Number | Description | Quantity |
| NP1256L | ALUM, UL CSA CC, W/O THERMAL, LASER | 1.000 EA |
| 34PA1002 | PACKING GROUP, BALDOR | 1.000 EA |
| PK3083T | STYROFOAM PACKING CRADLE W/TAPE | 1.000 EA |

| Performance Data at 460V, 60Hz, 0.33HP (Typical performance - Not guaranteed values) | | | | | | | |
|--|--------------------------------|--------|--------|----------------------|------------|--------|--------|
| General Characteristics | | | | | | | |
| Full Load Torque: | 1.0 LB-FT | | | Start Configuration: | DOL | | |
| No-Load Current: | 0.7 Amps | | | Break-Down Torque: | 4.7 LB-FT | | |
| Line-line Res. @ 25°C.: | 49.1 Ohms A Ph / 0.0 Ohms B Ph | | | Pull-Up Torque: | 3.35 LB-FT | | |
| Temp. Rise @ Rated Load: | 47 C | | | Locked-Rotor Torque: | 3.75 LB-FT | | |
| Temp. Rise @ S.F. Load: | 61 C | | | Starting Current: | 4.4 Amps | | |
| Load Characteristics | | | | | | | |
| % of Rated Load | 25 | 50 | 75 | 100 | 125 | 150 | S.F. |
| Power Factor: | 28.0 | 40.0 | 50.0 | 57.0 | 64.0 | 69.0 | 66.0 |
| Efficiency: | 44.0 | 59.0 | 65.0 | 68.0 | 68.0 | 67.0 | 68.0 |
| Speed: | 1788.0 | 1770.0 | 1760.0 | 1745.0 | 1730.0 | 1710.0 | 1725.0 |
| Line Amperes: | 0.7 | 0.73 | 0.77 | 0.8 | 0.85 | 1.0 | 0.9 |

Performance Graph at 460V, 60Hz, 0.33HP Typical performance - Not guaranteed values





CD0005

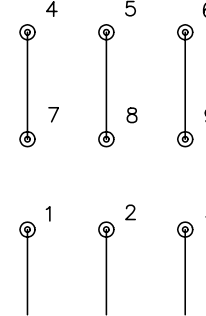


LOW VOLTAGE
(2Y)



LINE

HIGH VOLTAGE
(1Y)



LINE

NOTES:

1. INTERCHANGE ANY TWO LINE LEADS TO REVERSE ROTATION.
2. OPTIONAL THERMOSTATS ARE PROVIDED WHEN SPECIFIED.
3. ACTUAL NUMBER OF INTERNAL PARALLEL CIRCUITS MAY BE A MULTIPLE OF THOSE SHOWN ABOVE.
4. LEAD COLORS ARE OPTIONAL. LEADS MUST ALWAYS BE NUMBERED AS SHOWN.

REV. DESC: REVISE TO SHOW OPTIONAL COLORS

REV. LTR: E BY: JLP

REVISED: 01/19/99 10:15

TDR: 0171435

900000

FILE: AAA00005140

MDL: -

MTL: -

BALDOR ELECTRIC Co.

3PH, DV, 9 LEADS

CD0005