

# **BALDOR**® • ***RELIANCE***

## **Product Information Packet**

# **JMM2534T**

**30HP,3510RPM,3PH,60HZ,284JM,3936M,OPSB**

Part Detail							
Revision:	T	Status:	INA/A	Change #:		Proprietary:	No
Type:	AC	Elec. Spec:	39WGW883	CD Diagram:	CD0180	Mfg Plant:	
Mech. Spec:	39N090	Layout:	39LYN090	Poles:	02	Created Date:	
Base:	RG	Eff. Date:	03-08-2016	Leads:	9#10		

Specs			
Catalog Number:	JMM2534T	Insulation Class:	B
Enclosure:	ODP	Inverter Code:	Not Inverter
Frame:	284JM	KVA Code:	G
Output @ Frequency:	30.000 HP @ 60 HZ	Lifting Lugs:	Standard Lifting Lugs
Synchronous Speed @ Frequency:	3600 RPM @ 60 HZ	Locked Bearing Indicator:	Locked Bearing
Voltage @ Frequency:	230.0 V @ 60 HZ	Motor Lead Quantity/Wire Size:	9 @ 10 AWG
	460.0 V @ 60 HZ	Motor Lead Exit:	Ko Box
XP Division:	Not Applicable	Motor Lead Termination:	Flying Leads
Agency Approvals:	CSA	Motor Type:	3936M
	UR	Mounting Arrangement:	F1
Auxillary Box:	No Auxillary Box	Power Factor:	89
Auxillary Box Lead Termination:	None	Product Family:	General Purpose
Base Indicator:	Rigid	Pulley End Bearing Type:	Ball
Bearing Grease Type:	Polyrex EM (-20F +300F)	Pulley Face Code:	C-Face
Blower:	None	Pulley Shaft Indicator:	Tapped & Key
Current @ Voltage:	35.000 A @ 460.0 V	Rodent Screen:	Included
	70.000 A @ 230.0 V	Shaft Extension Location:	Pulley End
	75.000 A @ 208.0 V	Shaft Ground Indicator:	No Shaft Grounding

<b>Design Code:</b>	B	<b>Shaft Rotation:</b>	Reversible
<b>Drip Cover:</b>	No Drip Cover	<b>Shaft Slinger Indicator:</b>	Shaft Slinger
<b>Duty Rating:</b>	CONT	<b>Speed Code:</b>	Single Speed
<b>Electrically Isolated Bearing:</b>	Not Electrically Isolated	<b>Motor Standards:</b>	NEMA
<b>Feedback Device:</b>	NO FEEDBACK	<b>Starting Method:</b>	Direct on line
<b>Front Face Code:</b>	Standard	<b>Thermal Device - Bearing:</b>	None
<b>Front Shaft Indicator:</b>	None	<b>Thermal Device - Winding:</b>	None
<b>Heater Indicator:</b>	No Heater	<b>Vibration Sensor Indicator:</b>	No Vibration Sensor

Nameplate NP1256L										
CAT.NO.	JMM2534T									
SPEC.	39N090W883H1									
HP	30									
VOLTS	230/460									
AMP	70/35									
RPM	3510									
FRAME	284JM				HZ	60			PH	3
SER.F.	1.15		CODE	G	DES	B		CLASS	B	
NEMA-NOM-EFF	91		PF	89						
RATING	40C AMB-CONT									
CC	010A				USABLE AT 208V			75		
DE	6312				ODE	6208				
ENCL	OPSB		SN							

**AC Induction Motor Performance Data**

Record # 12976 - Typical performance - not guaranteed values

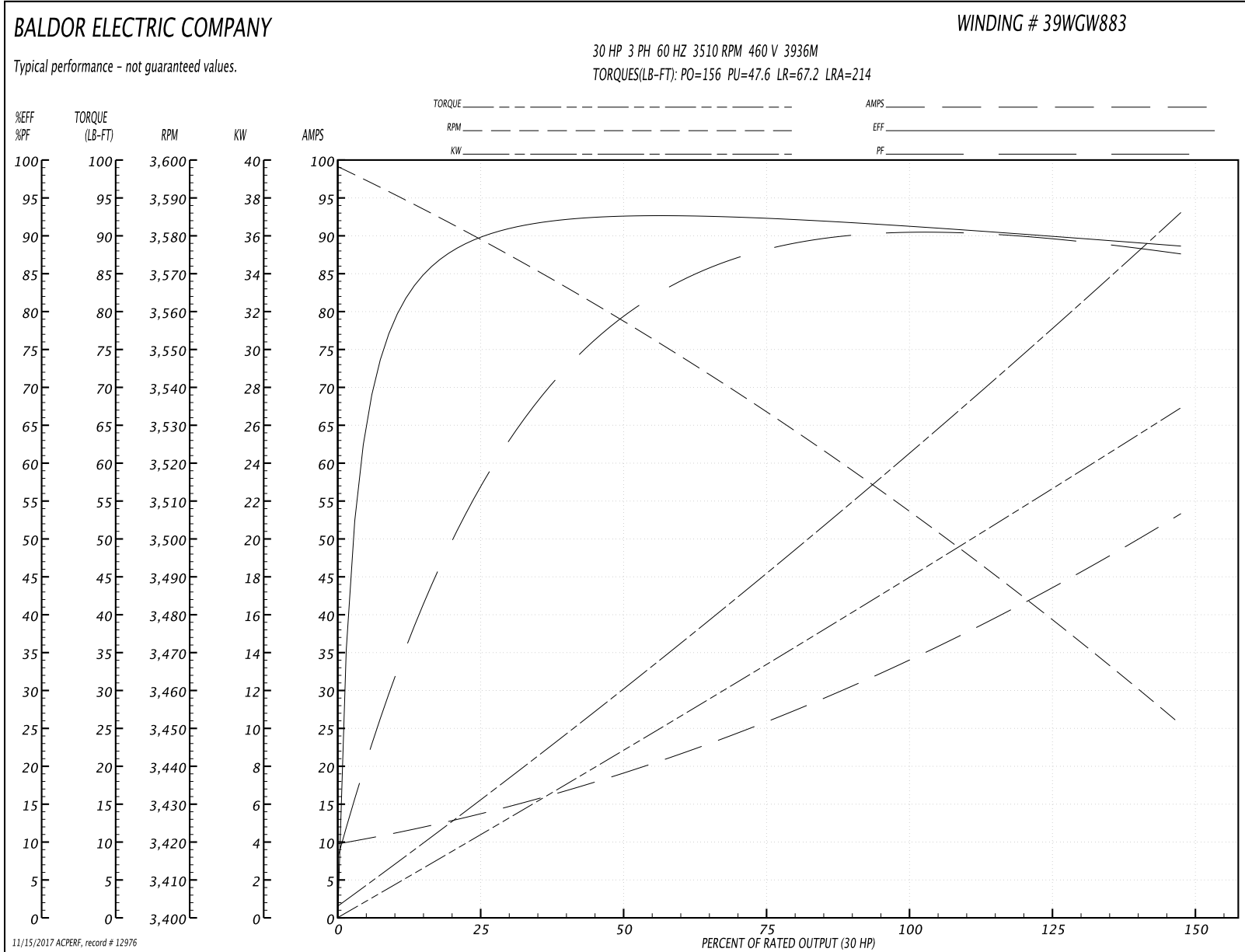
<b>Winding:</b> 39WGW883-R001	<b>Type:</b> 3936M	<b>Enclosure:</b> OPSB
-------------------------------	--------------------	------------------------

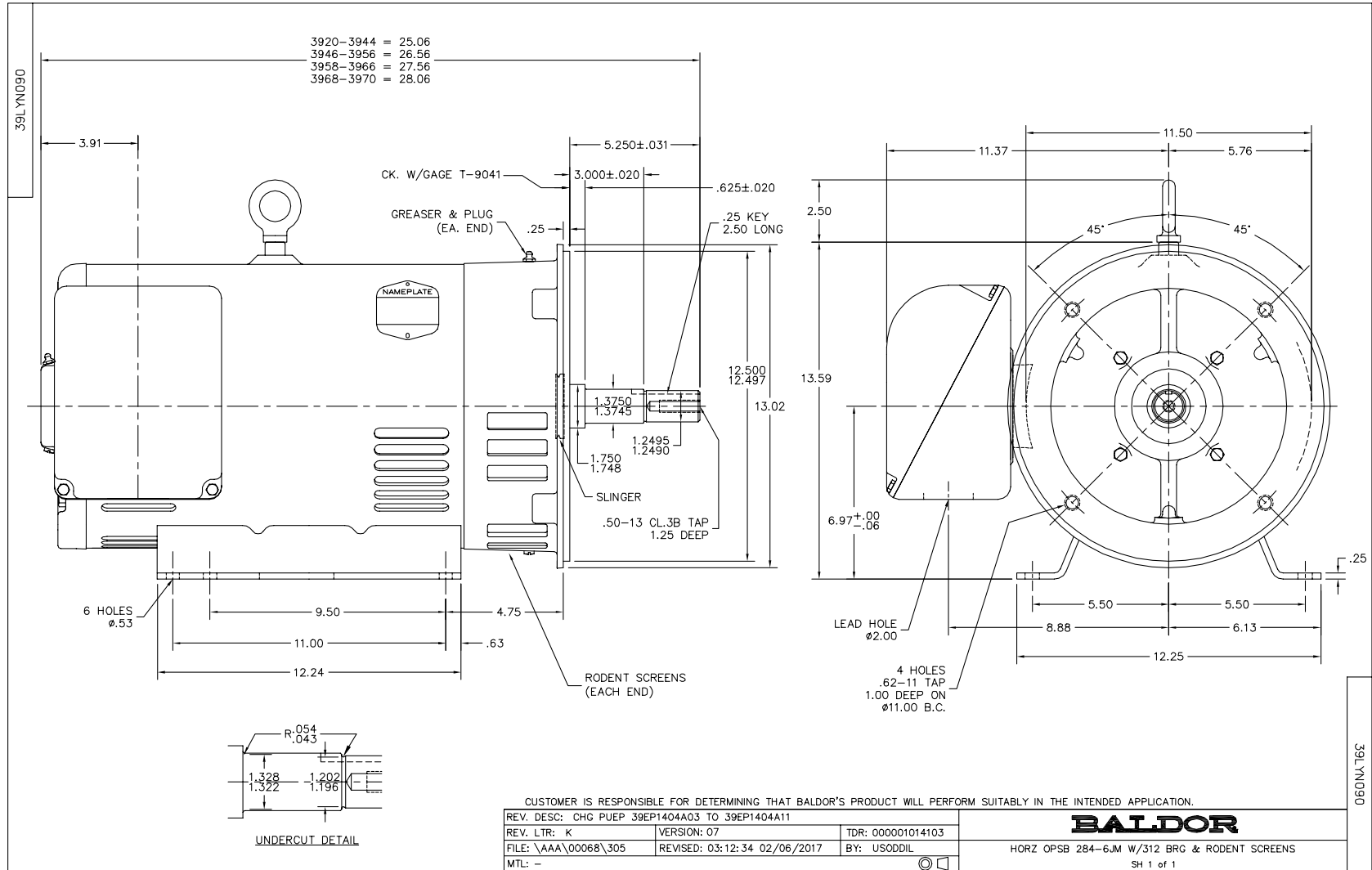
Nameplate Data				460 V, 60 Hz: High Voltage Connection	
Rated Output (HP)	30			Full Load Torque	44.9 LB-FT
Volts	230/460			Start Configuration	direct on line
Full Load Amps	70/35			Breakdown Torque	156 LB-FT
R.P.M.	3510			Pull-up Torque	47.6 LB-FT
Hz	60	Phase	3	Locked-rotor Torque	67.2 LB-FT
NEMA Design Code	B	KVA Code	G	Starting Current	214 A
Service Factor (S.F.)	1.15			No-load Current	10.3 A
NEMA Nom. Eff.	91	Power Factor	89	Line-line Res. @ 25°C	0.393 Ω
Rating - Duty	40C AMB-CONT			Temp. Rise @ Rated Load	37°C
S.F. Amps				Temp. Rise @ S.F. Load	51°C
				Locked-rotor Power Factor	30
				Rotor inertia	0.92 LB-FT <sup>2</sup>

Load Characteristics 460 V, 60 Hz, 30 HP

% of Rated Load	25	50	75	100	125	150	S.F.
Power Factor	60	80	87	89	90	90	90
Efficiency	89.4	92.2	92.3	91.4	90.2	88.5	90.7
Speed	3578	3556	3533	3508	3481	3450	3492
Line amperes	13.03	19	26.36	34.4	43.2	53.1	39.7

Performance Graph at 460V, 60Hz, 30.0HP Typical performance - Not guaranteed values

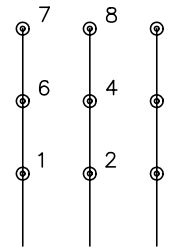




CD0180

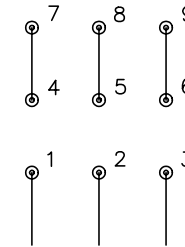


LOW VOLTAGE  
(2D)



LINE

HIGH VOLTAGE  
(1D)



LINE

NOTES:

1. INTERCHANGE ANY TWO LINE LEADS TO REVERSE ROTATION.
2. OPTIONAL THERMOSTATS ARE PROVIDED WHEN SPECIFIED.
3. ACTUAL NUMBER OF INTERNAL PARALLEL CIRCUITS MAY BE A MULTIPLE OF THOSE SHOWN ABOVE.
4. LEAD COLORS ARE OPTIONAL. LEADS MUST ALWAYS BE NUMBERED AS SHOWN.

REV. DESC: REVISE TO SHOW OPTIONAL COLORS			
REV. LTR: C	BY: JLP	REVISED: 01/21/99 2:28	TDR: 0171435
0810D0		FILE: AAA00005148	MDL: -
		MTL: -	

**BALDOR ELECTRIC Co.**

3PH, DV, 9 LEADS, DELTA CONNECTION

CD0180