

# **BALDOR**® • ***RELIANCE***

## **Product Information Packet**

# **ECP4407TR-4**

**200 HP SEV DUTY MTR**

| Part Detail |    |             |            |             |                      |               |            |
|-------------|----|-------------|------------|-------------|----------------------|---------------|------------|
| Revision:   | N  | Status:     | PRD/A      | Change #:   |                      | Proprietary:  | No         |
| Type:       | AC | Elec. Spec: | A44WG0690  | CD Diagram: | 416820-036           | Mfg Plant:    |            |
| Mech. Spec: |    | Layout:     | 617427-002 | Poles:      | 04                   | Created Date: | 08-10-2012 |
| Base:       |    | Eff. Date:  | 10-30-2017 | Leads:      | 3#1/0 (02 per group) |               |            |

| Specs                          |                             |                                |                    |
|--------------------------------|-----------------------------|--------------------------------|--------------------|
| Catalog Number:                | ECP4407TR-4                 | Heater Indicator:              | No Heater          |
| Enclosure:                     | TEFC                        | Insulation Class:              | F                  |
| Frame:                         | 447T                        | Inverter Code:                 | Inverter Ready     |
| Frame Material:                | Iron                        | KVA Code:                      | G                  |
| Output @ Frequency:            | 200.000 HP @ 60 HZ          | Lifting Lugs:                  | No Lifting Lugs    |
| Synchronous Speed @ Frequency: | 1800 RPM @ 60 HZ            | Motor Lead Quantity/Wire Size: | 6 @ 1/0 AWG        |
| Voltage @ Frequency:           | 460.0 V @ 60 HZ             | Motor Type:                    | A44120M            |
| XP Class and Group:            | None                        | Mounting Arrangement:          | F1                 |
| XP Division:                   | Division II                 | Power Factor:                  | 87                 |
| Agency Approvals:              | CSA EEV                     | Pulley End Bearing Type:       | Roller             |
| Auxillary Box:                 | No Auxillary Box            | Pulley Face Code:              | Standard           |
| Base Indicator:                | Rigid                       | Shaft Ground Indicator:        | No Shaft Grounding |
| Bearing Grease Type:           | Mobil SHC 220 (Athens Only) | Shaft Rotation:                | Reversible         |
| Constant Torque Speed Range:   | 30-60                       | Shaft Slinger Indicator:       | Shaft Slinger      |
| Current @ Voltage:             | 222.000 A @ 460.0 V         | Speed Code:                    | Single Speed       |
| Design Code:                   | B                           | Motor Standards:               | Other              |
| Drip Cover:                    | No Drip Cover               | Starting Method:               | Direct on line     |
| Duty Rating:                   | CONT                        | Thermal Device - Bearing:      | None               |

|                         |             |                                  |      |
|-------------------------|-------------|----------------------------------|------|
| <b>Feedback Device:</b> | NO FEEDBACK | <b>Thermal Device - Winding:</b> | None |
|                         |             | <b>XP Temp Code:</b>             | T3   |

| Nameplate NP3238   |             |                 |          |               |      |                       |      |                     |      |
|--------------------|-------------|-----------------|----------|---------------|------|-----------------------|------|---------------------|------|
| CAT NO             | ECP4407TR-4 | SPEC NO.        | P44G3934 |               |      |                       |      |                     |      |
| HP                 | 200         | AMPS            | 222      | VOLTS         | 460  | DESIGN                | B    |                     |      |
| FRAME              | 447T        | RPM             | 1785     | HZ            | 60   | AMB                   | 40   | SF                  | 1.15 |
| D.E. BRG.DATA      | NU222       | O.D.E. BRG.DATA | 6318     | PH            | 3    | DUTY                  | CONT | INSUL.CLASS         | F    |
| D.E. BRG.          | 110RU02M30X | TYPE            | P        | ENCL          | TEFC | CODE                  | G    | NEMA NOM EFFICIENCY | 96.2 |
| O.D.E. BRG.        | 90BC03J30X  | POWER FACTOR    | 87       | MAX CORR KVAR | 32.0 | GUARANTEED EFFICIENCY | 95.4 |                     |      |
| 3/4 LOAD EFF.      | 96.5        | TEMP            | = 200    |               |      |                       |      |                     |      |
| TEMP CODE          | T3          | CT HZ           | 30-60    | VT HZ         | 0-60 |                       |      |                     |      |
| CHP HZ             | 60-90       |                 |          |               |      |                       |      |                     |      |
| INVERTER-TEMP-CODE | T3          |                 |          |               |      |                       |      |                     |      |
| SER.NO.            |             | MOTOR WEIGHT    |          |               |      |                       |      |                     |      |

Nameplate NP2496L

MOBIL SHC -220 GREASE

|           |             |               |           |   |             |       |
|-----------|-------------|---------------|-----------|---|-------------|-------|
| REL. S.O. | FRAME       | HP            | TYPE      | PHASE/HERTZ                             | RPM         | VOLTS |
|           | 449TS       | 200           | P         | 3/60                                    | 1785        | 460   |
| AMPS      | DUTY        | AMB °C/INSUL. | S.F.      | NEMA DESIGN                             | CODE LETTER | ENCL. |
| 222       | CONT        | 40/F          | 1.15      | B                                       | G           | TEFC  |
| E/S       | ROTOR       | TEST S.O.     | TEST DATE | STATOR RES. @25 °C OHMS (BETWEEN LINES) |             |       |
| ---       | 418143052CE | ---           | ---       | .0169                                   |             |       |

PERFORMANCE


| LOAD    | HP   | AMPERES | RPM  | POWER FACTOR % | EFFICIENCY % |
|---------|------|---------|------|----------------|--------------|
| NO LOAD | 0    | 62.7    | 1800 | 4.06           | 0            |
| 1/4     | 50.0 | 88.9    | 1796 | 55.9           | 94.2         |
| 2/4     | 100  | 126     | 1793 | 77.1           | 96.2         |
| 3/4     | 150  | 172     | 1789 | 84.7           | 96.4         |
| 4/4     | 200  | 222     | 1785 | 87.5           | 96.2         |
| 5/4     | 250  | 276     | 1781 | 88.4           | 95.8         |

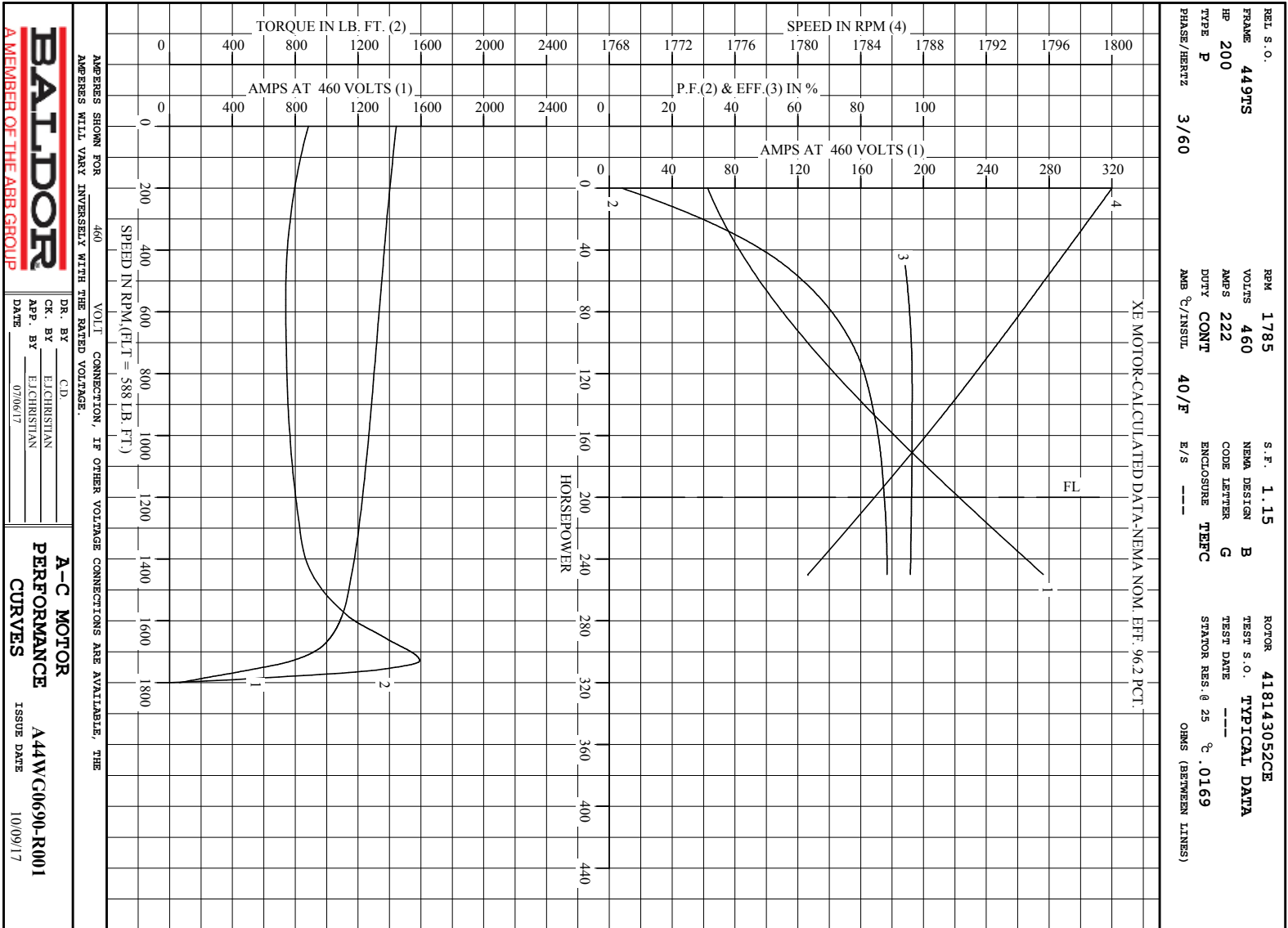
SPEED TORQUE

|              | RPM  | TORQUE % FULL LOAD | TORQUE LB.-FT. | AMPERES |
|--------------|------|--------------------|----------------|---------|
| LOCKED ROTOR | 0    | 150                | 883            | 1443    |
| PULL UP      | 540  | 126                | 740            | 1345    |
| BREAKDOWN    | 1730 | 271                | 1593           | 777     |
| FULL LOAD    | 1785 | 100                | 588            | 222     |

AMPERES SHOWN FOR 460. VOLT CONNECTION. IF OTHER VOLTAGE CONNECTIONS ARE AVAILABLE, THE AMPERES WILL VARY INVERSELY WITH THE RATED VOLTAGE

REMARKS: TYPICAL DATA  
 XE MOTOR--CALCULATED DATA--NEMA NOM. EFF. 96.2 PCT.

|  |         |                |  |
|--|---------|----------------|--|
| <br>A MEMBER OF THE ABB GROUP | DR. BY  | C.D.           | A-C MOTOR<br>PERFORMANCE DATA<br>A44WG0690-R001<br>ISSUE DATE 10/09/17 |
|  | CR. BY  | E.J. CHRISTIAN |  |
|  | APP. BY | E.J. CHRISTIAN |  |
|  | DATE    | 07/06/17       |  |

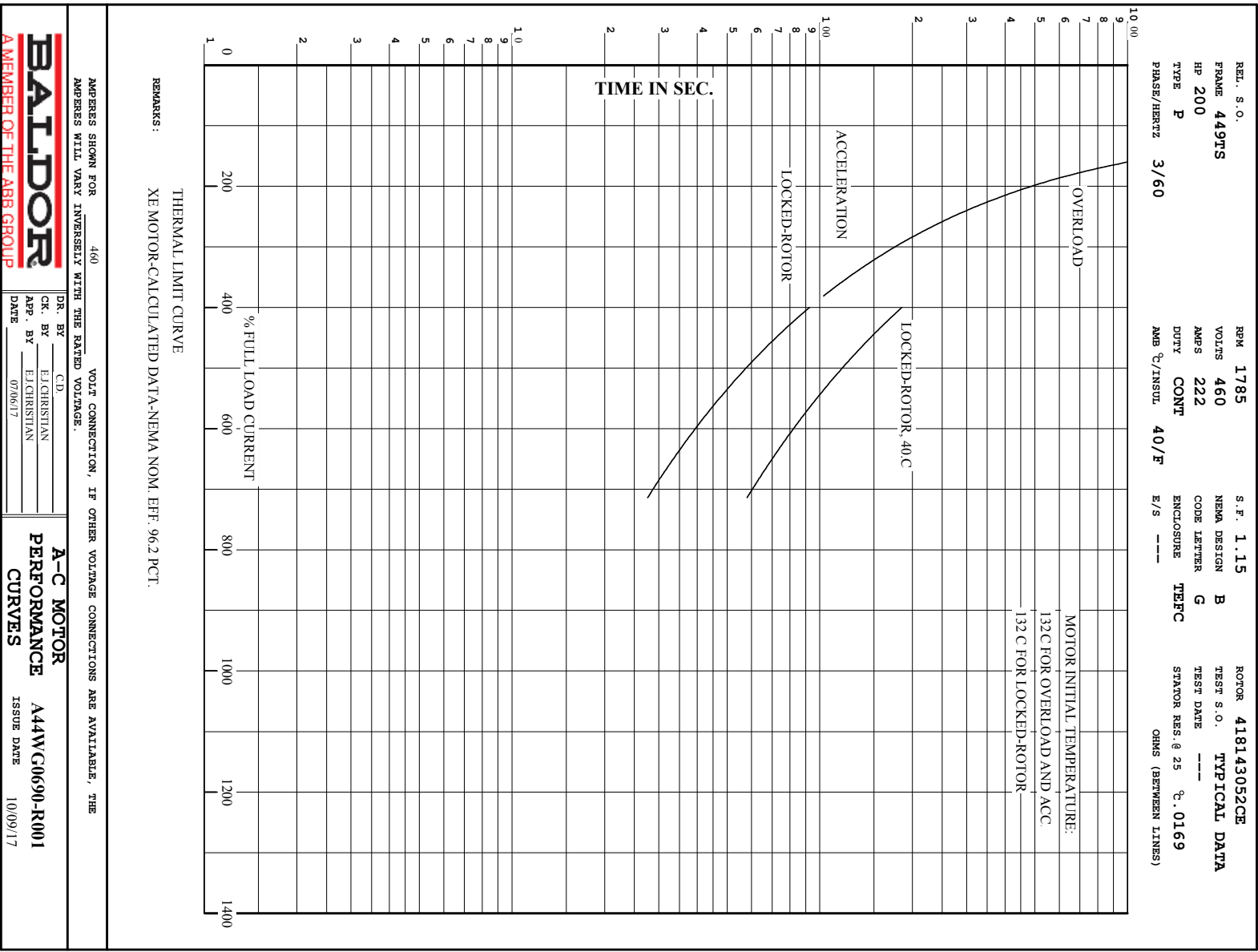


**BALDOR**  
A MEMBER OF THE ABB GROUP

DR. BY C.D.  
CK. BY E.J. CHRISTIAN  
APP. BY E.J. CHRISTIAN  
DATE 07/06/17

**A-C MOTOR**  
**PERFORMANCE** A44WC0690-R001  
**CURVES** ISSUE DATE 10/09/17

Printed on 10/9/17 11:58 @ bengap01.baldor.com



**BALDOR**  
 A MEMBER OF THE ABB GROUP

DR. BY C.D.  
 CK. BY E. CHRISTIAN  
 APP. BY E. CHRISTIAN  
 DATE 07/06/17

**A-C MOTOR**  
**PERFORMANCE** A44W/C0690-R001  
**CURVES** ISSUE DATE 10/09/17

617427-002

## DUTY MASTER ALTERNATING CURRENT MOTORS

SQUIRREL-CAGE INDUCTION

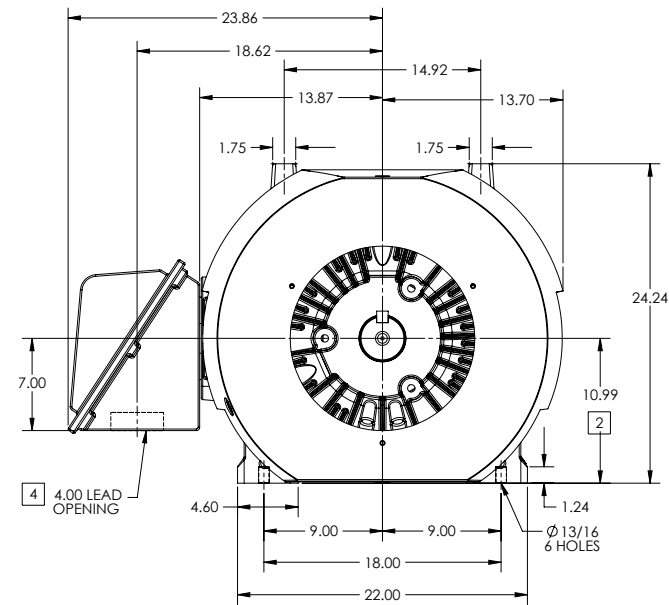
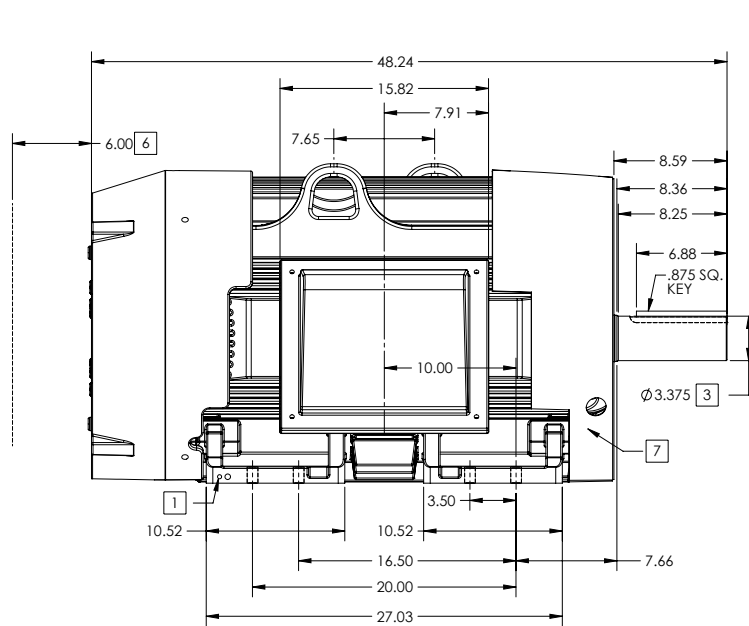
ENCLOSURE: TOTALLY ENCLOSED

FRAME G447T ABOVE NEMA RATINGS

COOLING: FAN COOLED

MOUNTING: FOOT

INCLUDES 445T FRAME MOUNTING HOLES



1. GROUND HOLES QTY 1 1/2-13 TAP; QTY 1 3/8-16 TAP
2. VARIES +.00, -.06
3. VARIES +.000, -.001
4. ON STANDARD MOTORS THIS IS CONDUIT SIZE. ON XT AND CORROSION PROOF MOTOR THIS IS PIPE TAP.
5. MOTOR WEIGHTS MAY VARY BY 15% DEPENDING ON RATING.
6. OBSTRUCTION MUST NOT ENCR OACH ON AIR INLET.
7. AIR DEFLECTOR INSTALLED WHEN REQUIRED.

CONDUIT BOX LOCATED ON OPPOSITE SIDE WHEN F-2.  
IF MOUNTING CLEARANCE DETAILS ARE REQUIRED, CONSULT FACTORY.  
MAXIMUM PERMISSIBLE SHAFT RUNOUT WHEN MEASURED AT END OF STANDARD SHAFT EXTENSION IS .003" T.I.R. TO 5 INCH DIA.

**5** WEIGHT (LBS): 2515

DRIVE END AIR DEFLECTOR IS ONLY INCLUDED WHEN NECESSARY.

DIMENSIONS ARE IN INCHES; SEE SHEET 2 FOR DIMENSIONS IN MILLIMETERS

CUSTOMER IS RESPONSIBLE FOR DETERMINING THAT MOTOR PERFORMANCE IS SUITABLE IN THE APPLICATION.

SHEET NUMBER  
1 OF 2

2007-27-19

|            |             |                              |                   |
|------------|-------------|------------------------------|-------------------|
| REV. A     | VERSION: 01 | REVISED: 08-25-13 02/15/2013 | TDR: 000000786306 |
| MODEL NO.  | 617427-002  | REF:                         |                   |
| BY: MGHWCG | Material:   |                              |                   |

**BALDOR**

G447T-445T STD - FOOTED - SIDE/CENTER CB

617427-002

617427-002

# DUTY MASTER ALTERNATING CURRENT MOTORS

## SQUIRREL-CAGE INDUCTION

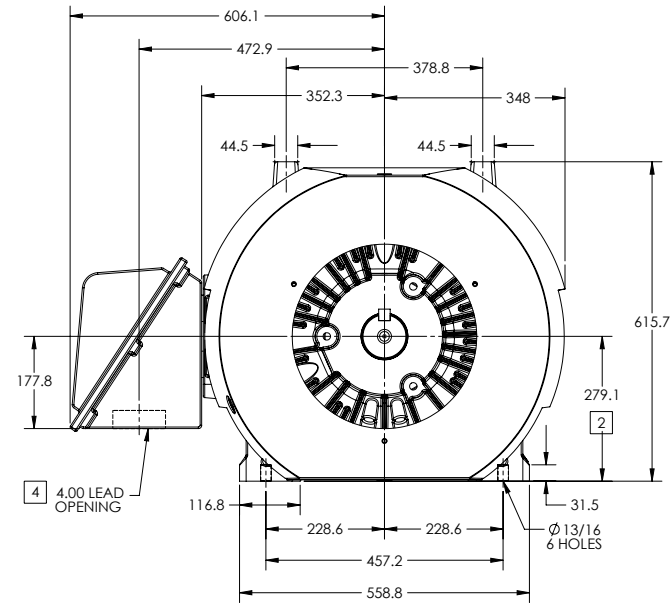
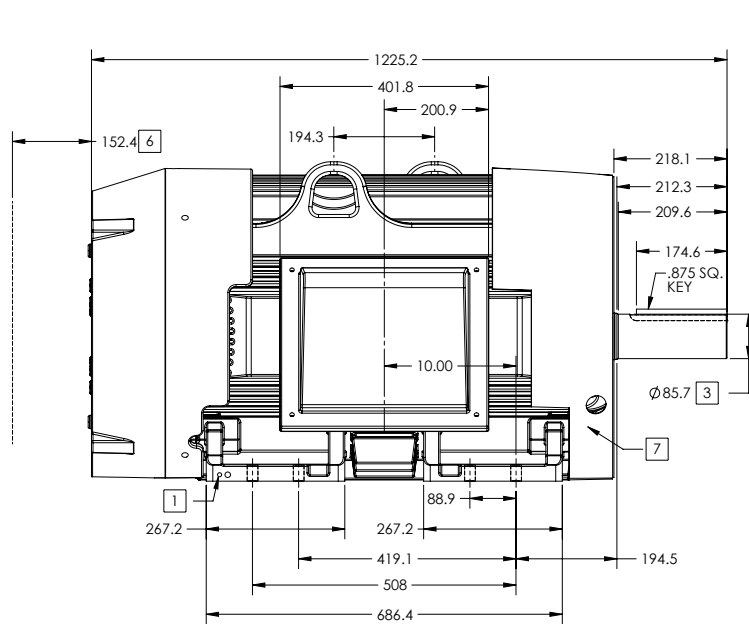
ENCLOSURE: TOTALLY ENCLOSED

FRAME G447T ABOVE NEMA RATINGS

COOLING: FAN COOLED

MOUNTING: FOOT

INCLUDES 445T FRAME MOUNTING HOLES



1. GROUND HOLES QTY 1 1/2-13 TAP; QTY 1 3/8-16 TAP
2. VARIES +.00, -.06
3. VARIES +.000, -.001
4. ON STANDARD MOTORS THIS IS CONDUIT SIZE. ON XT AND CORROSION PROOF MOTOR THIS IS PIPE TAP.
5. MOTOR WEIGHTS MAY VARY BY 15% DEPENDING ON RATING.
6. OBSTRUCTION MUST NO ENCROACH ON AIR INLET.
7. AIR DEFLECTOR INSTALLED WHEN REQUIRED.

CONDUIT BOX LOCATED ON OPPOSITE SIDE WHEN F-2.  
IF MOUNTING CLEARANCE DETAILS ARE REQUIRED, CONSULT FACTORY.  
MAXIMUM PERMISSIBLE SHAFT RUNOUT WHEN MEASURED AT END OF STANDARD SHAFT EXTENSION IS .08 MM T.I.R. TO 127 MM DIA.

**5** WEIGHT (KGS): 1140

DRIVE END AIR DEFLECTOR IS ONLY INCLUDED WHEN NECESSARY.

DIMENSIONS ARE IN MILLIMETERS; SEE SHEET 1 FOR DIMENSIONS IN INCHES

CUSTOMER IS RESPONSIBLE FOR DETERMINING THAT MOTOR PERFORMANCE IS SUITABLE IN THE APPLICATION.

|  |             |                              |                   |
|--|-------------|------------------------------|-------------------|
| REV. DESC-CHANGING ENCLOSURE TO "TOTALLY ENCLOSED" WAS "UL..." |             |                              |                   |
| REV: A   | VERSION: 01 | REVISED: 08-25-13 02/15/2013 | TDR: 000000786306 |
| MODEL NO. 617427-002   |             | REF:                         |                   |
| BY: MGHWC  | Material:   | C                            |                   |

**BALDOR**

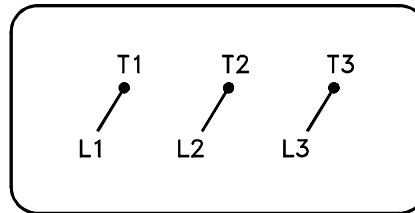
G447T-445T STD - FOOTED - SIDE/CENTER CB

617427-002

200-272719

416820-036

A-C MOTOR  
 CONNECTION DIAGRAM  
 STANDARD 3 LEAD CONNECTED



(N.P. 1575-BA)

416820-036

|                                      |                              |                   |
|--------------------------------------|------------------------------|-------------------|
| REV. DESC: LOADED TO BUS, C/R 335225 |                              |                   |
| REV. LTR: -                          | VERSION: 00                  | TDR: 000000538207 |
| FILE: \MGA\00000\682                 | REVISED: 11:54:06 04/30/2010 |                   |
| MTL: -                               | BY: RAGRA                    |                   |

**BALDOR**

CONN DIAG - STANDARD 3 LEAD

SH 1 of 1