

# **BALDOR**® • ***RELIANCE***

## **Product Information Packet**

# **1250**

**2HP,1800RPM,1PH,60HZ,3634L,BUFF**

Part Detail							
Revision:	V	Status:	PRD/A	Change #:		Proprietary:	No
Type:	AC	Elec. Spec:	G2WG0002	CD Diagram:	CD0253	Mfg Plant:	
Mech. Spec:	G12-120	Layout:	G2LY0120	Poles:	04	Created Date:	
Base:	RG	Eff. Date:	12-01-2016	Leads:	4#16 12" FROM IRON		Y

Specs			
Nameplate Output:	2		
Product Style:	GRINDER		

## Nameplate NP3352L

CAT.NO.	1250		
HP	2	VOLTS	115/230
PHASE	1	AMPS	20/10
HZ	60	RPM	1800
SER.NO			
SPEC.	G12-120A-0002		
BLANK			

**AC Induction Motor Performance Data**

Record # 21971 - Typical performance - not guaranteed values

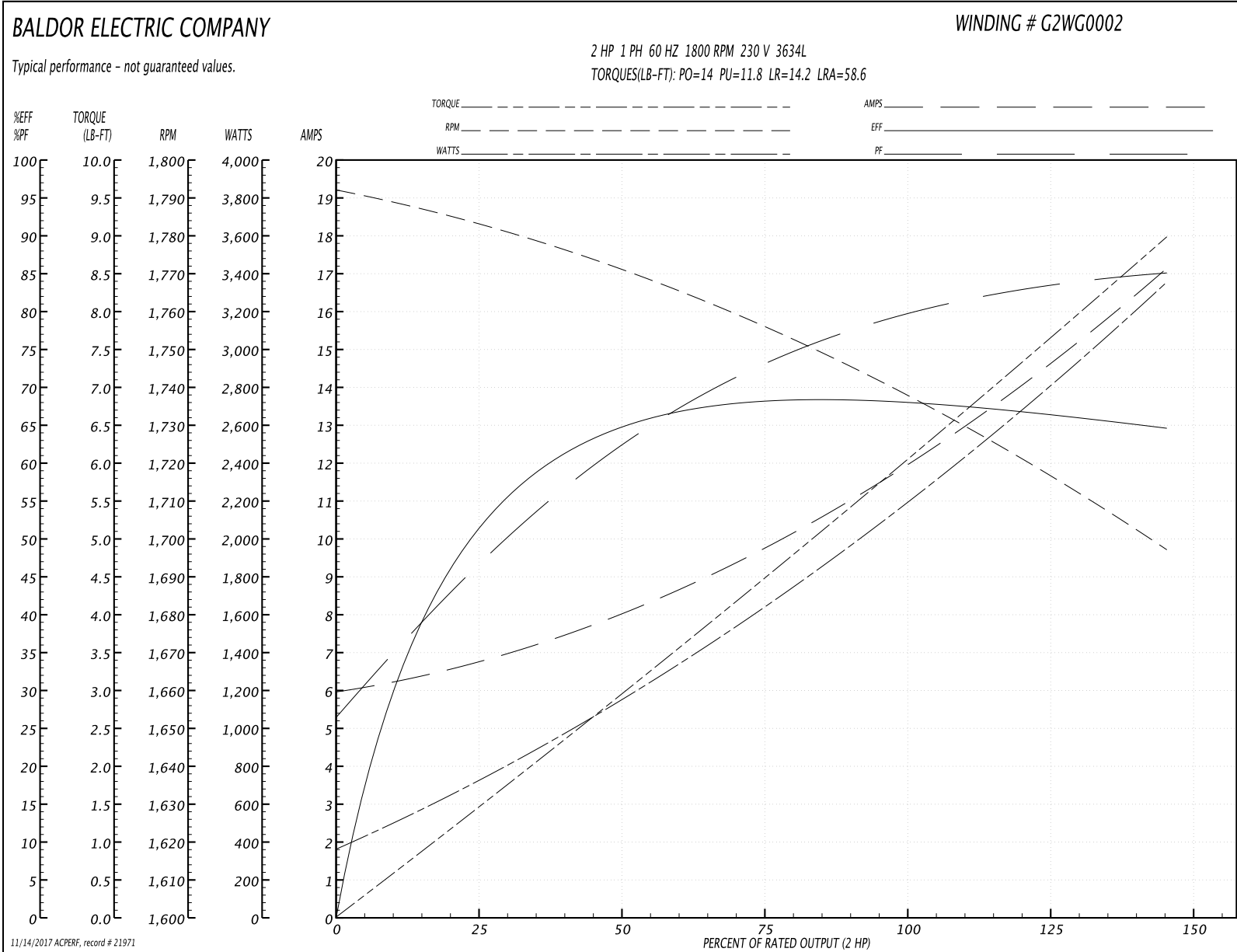
<b>Winding:</b> G2WG0002-R001	<b>Type:</b> 3634L	<b>Enclosure:</b> TENV
-------------------------------	--------------------	------------------------

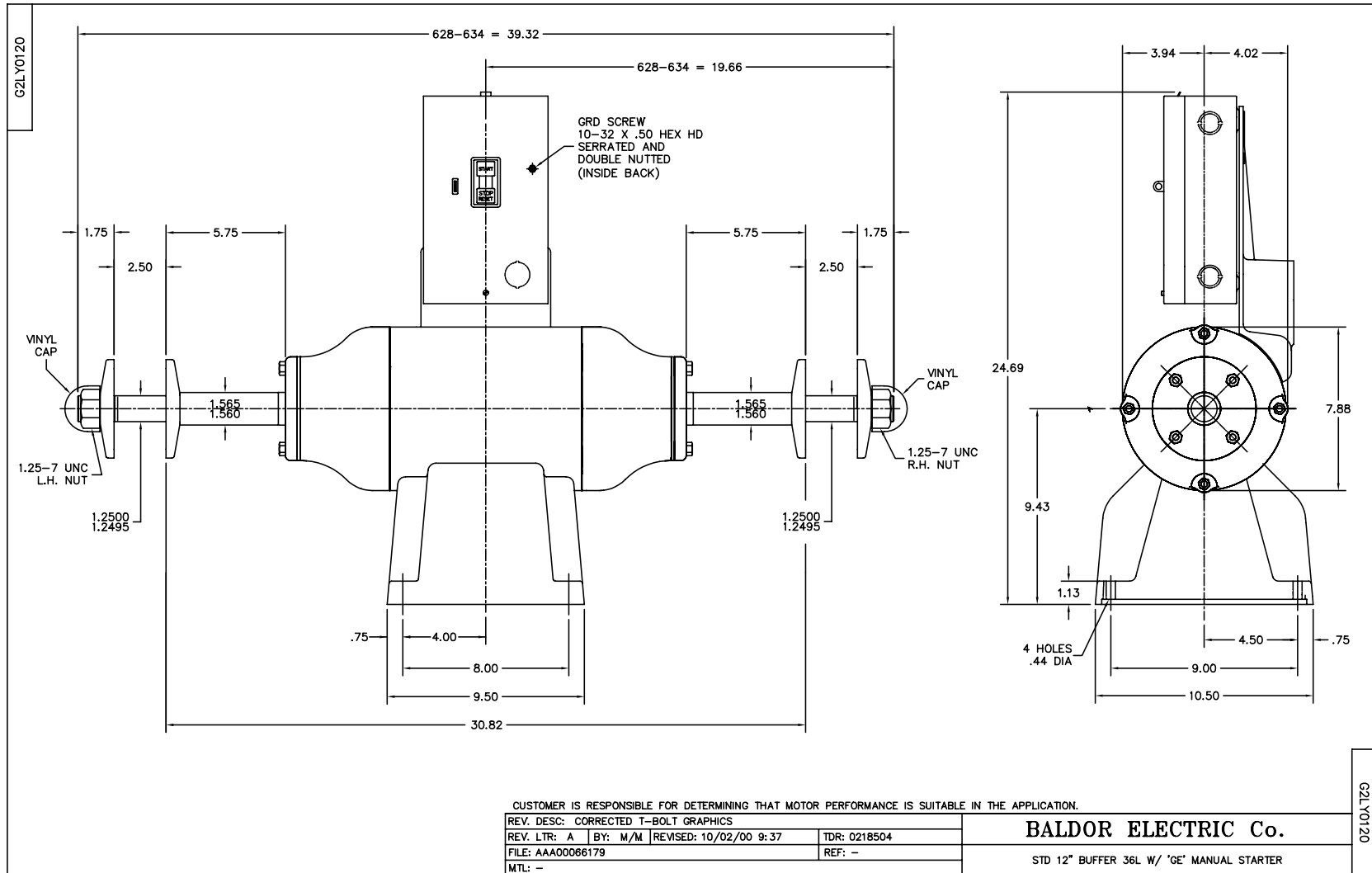
Nameplate Data				230 V, 60 Hz: High Voltage Connection	
Rated Output (HP)	2			Full Load Torque	6 LB-FT
Volts	115/230			Start Configuration	direct on line
Full Load Amps	20/10			Breakdown Torque	14 LB-FT
R.P.M.	1800			Pull-up Torque	11.8 LB-FT
Hz	60	Phase	1	Locked-rotor Torque	14.2 LB-FT
NEMA Design Code	-	KVA Code	-	Starting Current	58.6 A
Service Factor (S.F.)	1			No-load Current	6.04 A
NEMA Nom. Eff.	0	Power Factor	0	Line-line Res. @ 25°C	0.997 Ω A Ph 0.665 Ω B Ph
Rating - Duty	40C AMB-CONT			Temp. Rise @ Rated Load	

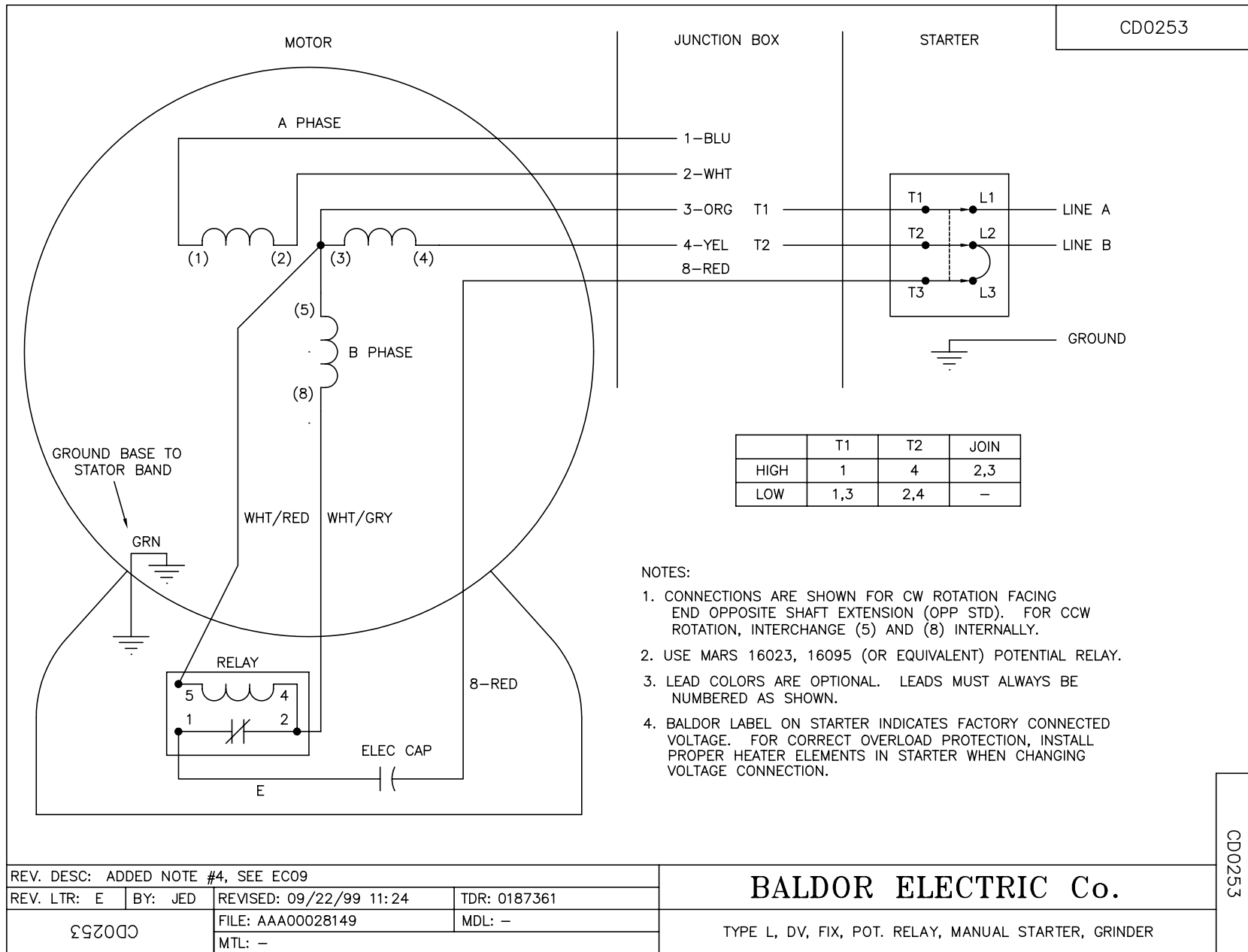
Load Characteristics 230 V, 60 Hz, 2 HP

% of Rated Load	25	50	75	100	125	150
Power Factor	49	64	73	79	82	86
Efficiency	50.6	64.5	68.3	68.7	66.4	64.6
Speed	1782	1770	1756	1739	1720	1696
Line amperes	6.7	7.99	9.76	11.9	14.6	17

Performance Graph at 230V, 60Hz, 2.0HP Typical performance - Not guaranteed values







**BALDOR ELECTRIC Co.**

TYPE L, DV, FIX, POT. RELAY, MANUAL STARTER, GRINDER