

BALDOR® • ***RELIANCE***

Product Information Packet

CL3403

11L 4P TEFC HOR 56C

Part Detail							
Revision:	T	Status:	PRD/A	Change #:		Proprietary:	No
Type:	AC	Elec. Spec:	34WG5506	CD Diagram:	CD0001	Mfg Plant:	
Mech. Spec:	34C062	Layout:	34LYC062	Poles:	04	Created Date:	
Base:	RG	Eff. Date:	07-20-2015	Leads:	6#18		

Specs			
Catalog Number:	CL3403	Heater Indicator:	No Heater
Enclosure:	TEFC	Insulation Class:	B
Frame:	56C	Inverter Code:	Not Inverter
Frame Material:	Steel	KVA Code:	L
Output @ Frequency:	.250 HP @ 60 HZ	Lifting Lugs:	No Lifting Lugs
Synchronous Speed @ Frequency:	1800 RPM @ 60 HZ	Locked Bearing Indicator:	Locked Bearing
Voltage @ Frequency:	230.0 V @ 60 HZ	Motor Lead Quantity/Wire Size:	6 @ 18 AWG
	115.0 V @ 60 HZ	Motor Lead Exit:	Ko Box
XP Class and Group:	None	Motor Lead Termination:	Flying Leads
XP Division:	Not Applicable	Motor Type:	3411L
Agency Approvals:	UR	Mounting Arrangement:	F1
	CSA	Power Factor:	57
Auxillary Box:	No Auxillary Box	Product Family:	General Purpose
Auxillary Box Lead Termination:	None	Pulley End Bearing Type:	Ball
Base Indicator:	Rigid	Pulley Face Code:	C-Face
Bearing Grease Type:	Polyrex EM (-20F +300F)	Pulley Shaft Indicator:	Standard
Blower:	None	Rodent Screen:	None
Current @ Voltage:	2.500 A @ 230.0 V	Shaft Extension Location:	Pulley End

Product Information Packet: CL3403 - 11L 4P TEFC HOR 56C

	3.000 A @ 208.0 V	Shaft Ground Indicator:	No Shaft Grounding
	5.000 A @ 115.0 V	Shaft Rotation:	Reversible
Design Code:	N	Shaft Slinger Indicator:	No Slinger
Drip Cover:	No Drip Cover	Speed Code:	Single Speed
Duty Rating:	CONT	Motor Standards:	NEMA
Electrically Isolated Bearing:	Not Electrically Isolated	Starting Method:	Direct on line
Feedback Device:	NO FEEDBACK	Thermal Device - Bearing:	None
Front Face Code:	Standard	Thermal Device - Winding:	None
Front Shaft Indicator:	None	Vibration Sensor Indicator:	No Vibration Sensor

Nameplate NP1256L										
CAT.NO.	CL3403									
SPEC.	34C62-5506									
HP	.25									
VOLTS	115/230									
AMP	5/2.5									
RPM	1725									
FRAME	56C				HZ	60			PH	1
SER.F.	1.35//		CODE	L	DES	N		CLASS	B	
NEMA-NOM-EFF	55		PF	57						
RATING	40C AMB-CONT									
CC									USABLE AT 208V	3
DE	6203				ODE	6203				
ENCL	TEFC		SN							
	SFA 5.6/2.8									

AC Induction Motor Performance Data
Record # 6772 - Typical performance - not guaranteed values

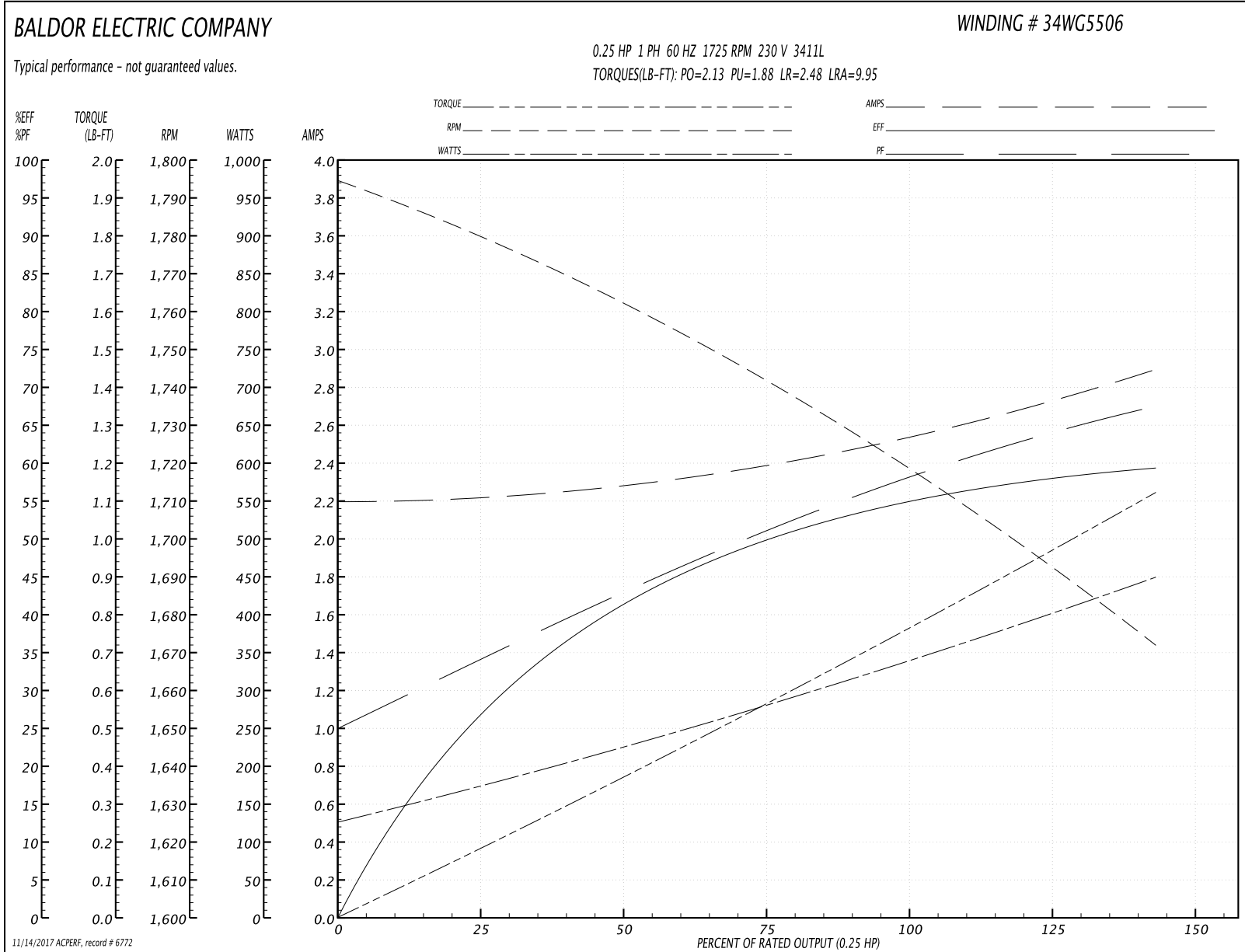
Winding: 34WG5506-R001	Type: 3411L	Enclosure: TEFC
-------------------------------	--------------------	------------------------

Nameplate Data				230 V, 60 Hz: High Voltage Connection	
Rated Output (HP)	.25			Full Load Torque	0.75 LB-FT
Volts	115/230			Start Configuration	direct on line
Full Load Amps	5/2.5			Breakdown Torque	2.13 LB-FT
R.P.M.	1725			Pull-up Torque	1.88 LB-FT
Hz	60	Phase	1	Locked-rotor Torque	2.48 LB-FT
NEMA Design Code	N	KVA Code	L	Starting Current	9.95 A
Service Factor (S.F.)	1.35			No-load Current	2.2 A
NEMA Nom. Eff.	55	Power Factor	57	Line-line Res. @ 25°C	8.88 Ω A Ph 7.06 Ω B Ph
Rating - Duty	40C AMB-CONT			Temp. Rise @ Rated Load	57°C
S.F. Amps	5.6/2.8			Temp. Rise @ S.F. Load	70°C

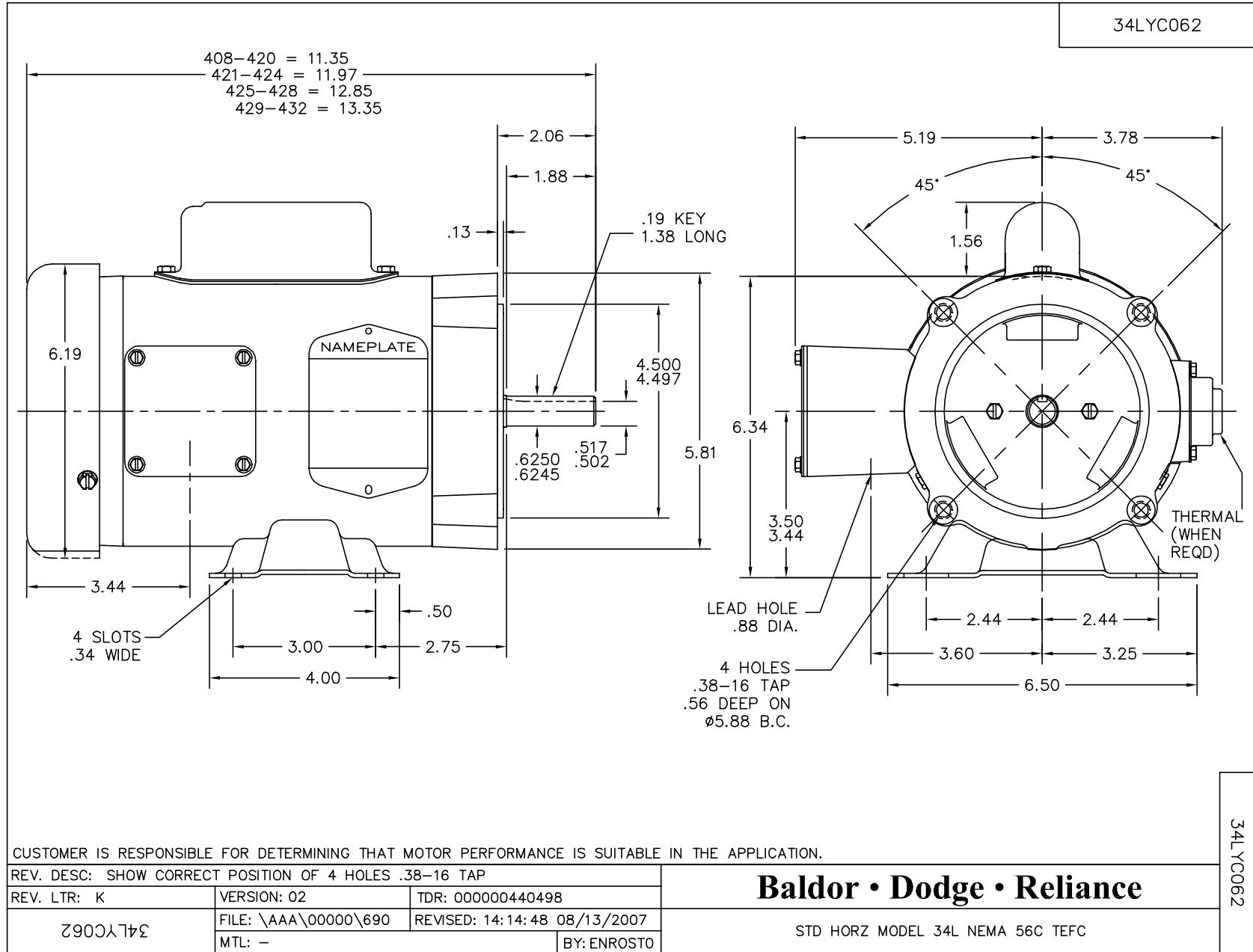
Load Characteristics 230 V, 60 Hz, 0.25 HP

% of Rated Load	25	50	75	100	125	150	S.F.
Power Factor	32	40	49	57	63	69	67
Efficiency	28	40	50	55	58	59	59
Speed	1779	1763	1740	1720	1700	1670	1680
Line amperes	2.2	2.3	2.4	2.5	2.7	2.9	2.8

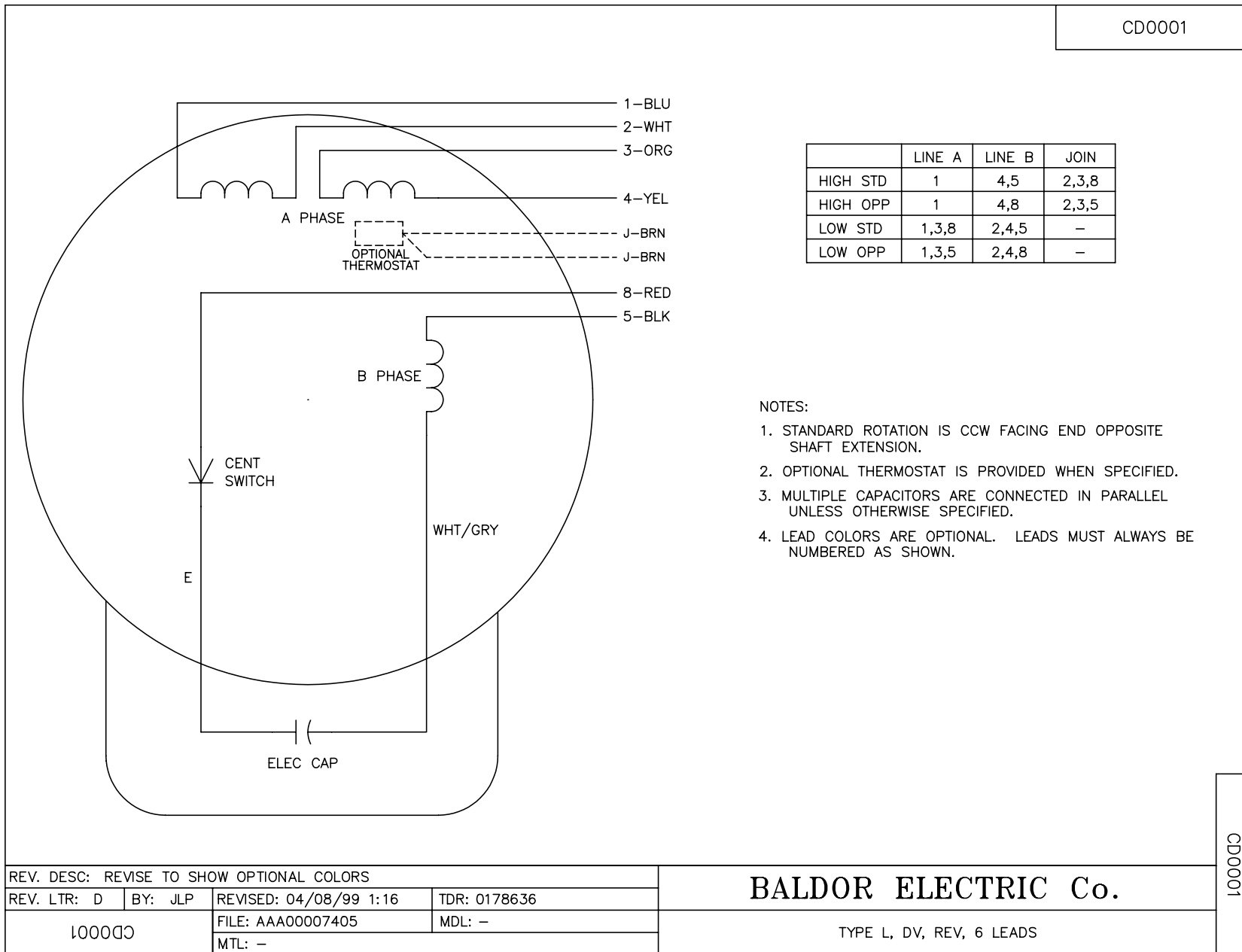
Performance Graph at 230V, 60Hz, 0.25HP Typical performance - Not guaranteed values



11/14/2017 ACPERF: record # 6772



CD0001



REV. DESC: REVISE TO SHOW OPTIONAL COLORS			
REV. LTR: D	BY: JLP	REVISED: 04/08/99 1:16	TDR: 0178636
100000		FILE: AAA00007405	MDL: -
		MTL: -	

BALDOR ELECTRIC Co.

TYPE L, DV, REV, 6 LEADS

CD0001