

BALDOR® • ***RELIANCE***

Product Information Packet

PSC3416A

.33HP, 1625RPM, 1PH, 60HZ, 48Z, 3414C, TEAO, F1

Part Detail							
Revision:	J	Status:	PRD/A	Change #:		Proprietary:	No
Type:	AC	Elec. Spec:	34WGW426	CD Diagram:	CD0028	Mfg Plant:	
Mech. Spec:	34G144	Layout:	34LYG144	Poles:	04	Created Date:	
Base:	RG	Eff. Date:	04-01-2011	Leads:	7#18		

Specs			
Catalog Number:	PSC3416A	Insulation Class:	B
Enclosure:	TEAO	Inverter Code:	Not Inverter
Frame:	48Z	KVA Code:	-
Frame Material:	Steel	Lifting Lugs:	No Lifting Lugs
Output @ Frequency:	.330 HP @ 60 HZ	Locked Bearing Indicator:	No Locked Bearing
Synchronous Speed @ Frequency:	1800 RPM @ 60 HZ	Motor Lead Quantity/Wire Size:	7 @ 18 AWG
Voltage @ Frequency:	115.0 V @ 60 HZ	Motor Lead Exit:	Terminal Panel Or Lead Hole
	230.0 V @ 60 HZ	Motor Lead Termination:	Flying Leads
XP Class and Group:	None	Motor Type:	3414C
XP Division:	Not Applicable	Mounting Arrangement:	F1
Agency Approvals:	UR	Power Factor:	95
	CSA	Product Family:	General Purpose
Auxillary Box:	No Auxillary Box	Pulley End Bearing Type:	Ball
Auxillary Box Lead Termination:	None	Pulley Face Code:	Standard
Base Indicator:	Rigid	Pulley Shaft Indicator:	Standard
Bearing Grease Type:	Polyrex EM (-20F +300F)	Rodent Screen:	None
Blower:	None	Shaft Extension Location:	Pulley End
Current @ Voltage:	1.800 A @ 230.0 V	Shaft Ground Indicator:	No Shaft Grounding

	3.600 A @ 115.0 V	Shaft Rotation:	Reversible
Design Code:	N	Shaft Slinger Indicator:	No Slinger
Drip Cover:	No Drip Cover	Speed Code:	Single Speed
Duty Rating:	CONT	Motor Standards:	NEMA
Electrically Isolated Bearing:	Not Electrically Isolated	Starting Method:	Direct on line
Feedback Device:	NO FEEDBACK	Thermal Device - Bearing:	None
Front Face Code:	Terminal Panel	Thermal Device - Winding:	None
Front Shaft Indicator:	None	Vibration Sensor Indicator:	No Vibration Sensor
Heater Indicator:	No Heater	Winding Thermal 1:	Automatic Thermal Overload
		Winding Thermal 1 Location:	SB

Nameplate NP1257L	
CAT.NO.	PSC3416A
SPEC.	34G144W426
HP	.33 AIR OVER
VOLTS	115/230
AMP	3.6/1.8
RPM	1625
FRAME	48Z HZ 60 PH 1
SER.F.	1.00 CODE - DES N CL B
NEMA-NOM-EFF	62 PF 95
RATING	40C AMB-CONT
CC	USABLE AT 208V
DE	6203 ODE 6203
ENCL	TEAO SN

AC Induction Motor Performance Data
Record # 6977 - Typical performance - not guaranteed values

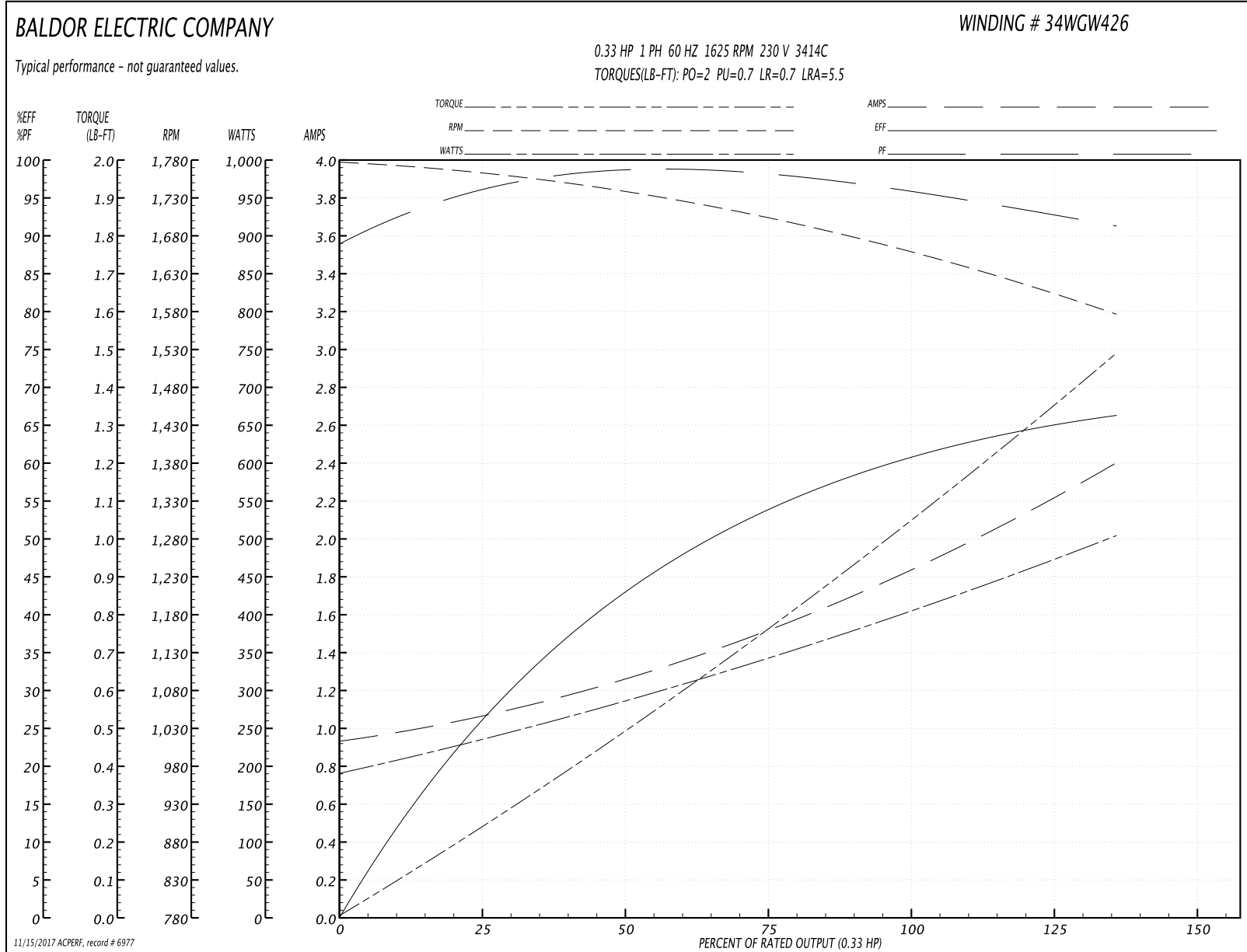
Winding: 34WGW426-R001	Type: 3414C	Enclosure: TEAO
-------------------------------	--------------------	------------------------

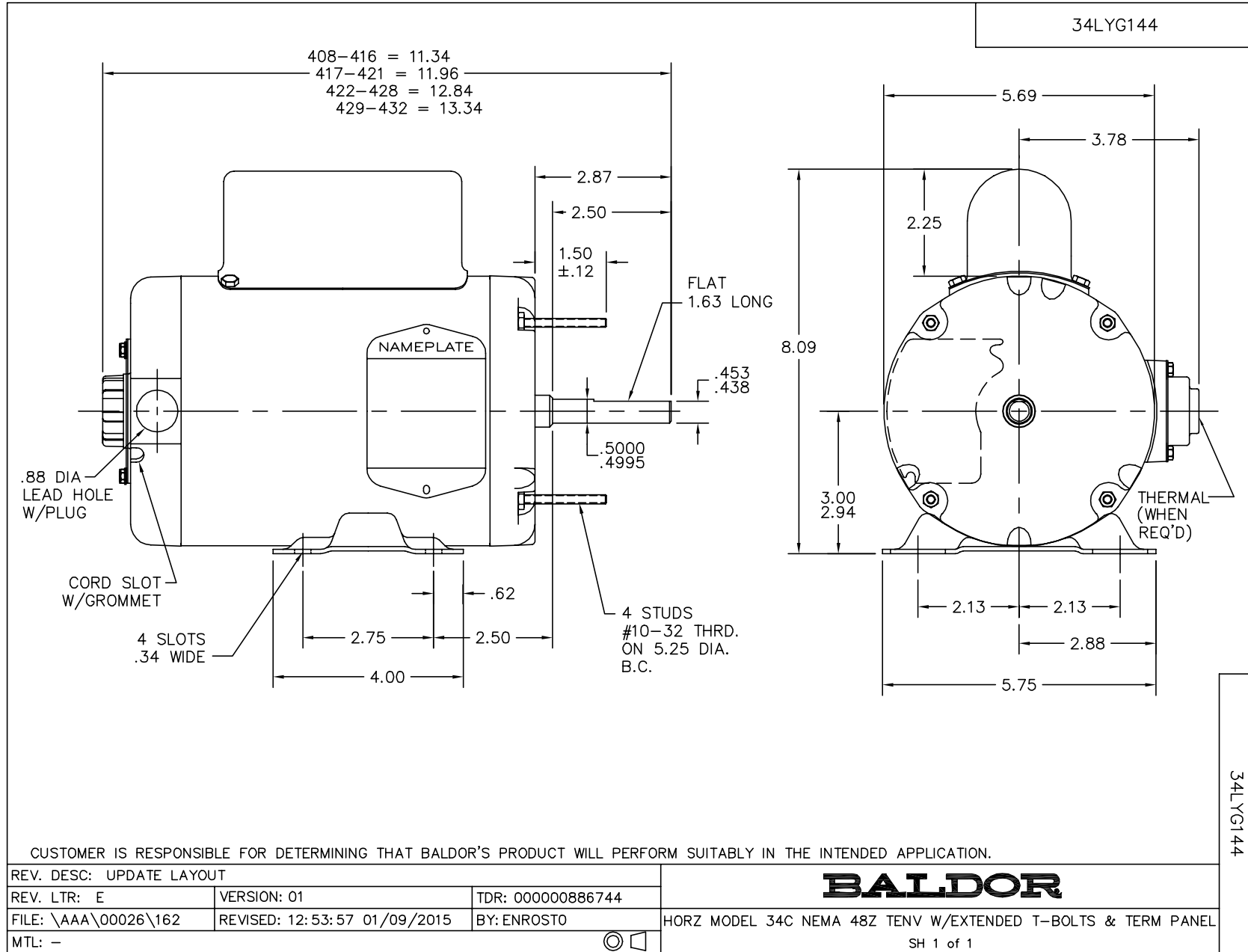
Nameplate Data				230 V, 60 Hz: High Voltage Connection	
Rated Output (HP)	.33 AIR OVER			Full Load Torque	1 LB-FT
Volts	115/230			Start Configuration	direct on line
Full Load Amps	3.6/1.8			Breakdown Torque	2 LB-FT
R.P.M.	1625			Pull-up Torque	0.7 LB-FT
Hz	60	Phase	1	Locked-rotor Torque	0.7 LB-FT
NEMA Design Code	N	KVA Code	-	Starting Current	5.5 A
Service Factor (S.F.)	1			No-load Current	0.9 A
NEMA Nom. Eff.	62	Power Factor	95	Line-line Res. @ 25°C	10.7 Ω A Ph 10.7 Ω B Ph
Rating - Duty	40C AMB-CONT			Temp. Rise @ Rated Load	

Load Characteristics 230 V, 60 Hz, 0.33 HP

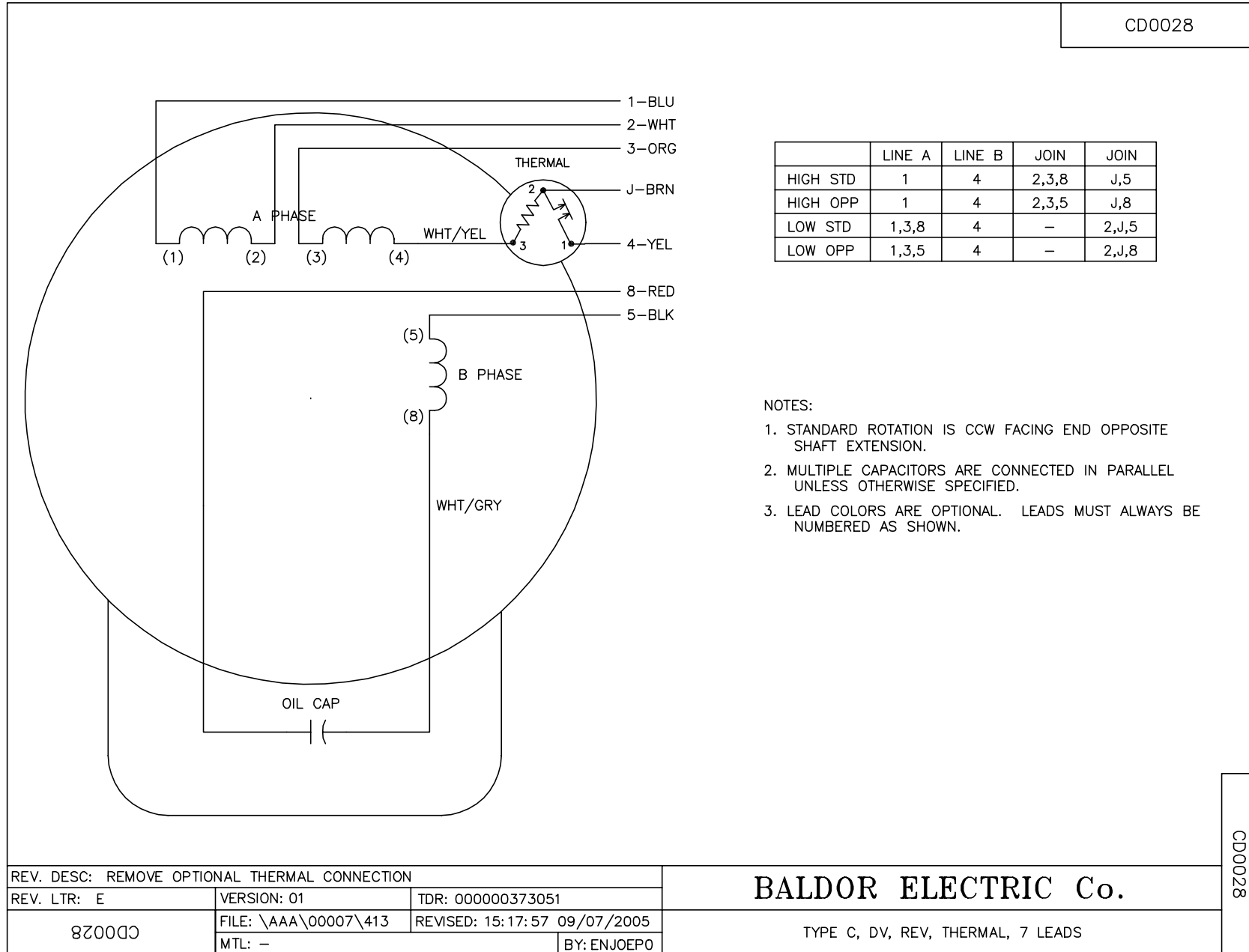
% of Rated Load	25	50	75	100	125	150
Power Factor	94	97	99	99	99	99
Efficiency	25.8	42.5	53.6	60.7	64.7	65.6
Speed	1759	1734	1705	1671	1628	1570
Line amperes	1.1	1.3	1.5	1.75	2.05	2.45

Performance Graph at 230V, 60Hz, 0.33HP Typical performance - Not guaranteed values





CD0028



CD0028

REV. DESC: REMOVE OPTIONAL THERMAL CONNECTION		
REV. LTR: E	VERSION: 01	TDR: 000000373051
8Z0028	FILE: \AAA\00007\413	REVISED: 15:17:57 09/07/2005
	MTL: -	BY: ENJOEPO

BALDOR ELECTRIC Co.

TYPE C, DV, REV, THERMAL, 7 LEADS