

BALDOR® • ***RELIANCE***

Product Information Packet

WCL1509T

7.5HP,3450RPM,1PH,60HZ,213TCZ,3729L,OPEN

Part Detail							
Revision:	AJ	Status:	PRD/A	Change #:		Proprietary:	No
Type:	AC	Elec. Spec:	37WG077	CD Diagram:	CD0017A01	Mfg Plant:	
Mech. Spec:	37E284	Layout:	37LYE284	Poles:	02	Created Date:	
Base:	RG	Eff. Date:	03-01-2017	Leads:	2#8 A PH,2#14 B PH		

Specs			
Catalog Number:	WCL1509T	Inverter Code:	Not Inverter
Enclosure:	OPEN	KVA Code:	G
Frame:	213TCZ	Lifting Lugs:	No Lifting Lugs
Frame Material:	Steel	Locked Bearing Indicator:	Locked Bearing
Output @ Frequency:	7.500 HP @ 60 HZ	Motor Lead Quantity/Wire Size:	2 @ 8 AWG, A PH
Synchronous Speed @ Frequency:	3600 RPM @ 60 HZ	Motor Lead Exit:	Ko Box
Voltage @ Frequency:	230.0 V @ 60 HZ	Motor Lead Termination:	Flying Leads
XP Class and Group:	None	Motor Type:	3729L
XP Division:	Not Applicable	Mounting Arrangement:	F1
Agency Approvals:	UR	Power Factor:	82
	CSA	Product Family:	General Purpose
Auxillary Box:	No Auxillary Box	Pulley End Bearing Type:	Ball
Auxillary Box Lead Termination:	None	Pulley Face Code:	C-Face
Base Indicator:	Rigid	Pulley Shaft Indicator:	Tapped & Key
Bearing Grease Type:	Polyrex EM (-20F +300F)	Rodent Screen:	Included
Blower:	None	Shaft Extension Location:	Pulley End
Current @ Voltage:	37.000 A @ 230.0 V	Shaft Ground Indicator:	No Shaft Grounding
Design Code:	L	Shaft Rotation:	Reversible

Drip Cover:	No Drip Cover	Shaft Slinger Indicator:	No Slinger
Duty Rating:	CONT	Speed Code:	Single Speed
Electrically Isolated Bearing:	Not Electrically Isolated	Motor Standards:	NEMA
Feedback Device:	NO FEEDBACK	Starting Method:	Direct on line
Front Face Code:	Standard	Thermal Device - Bearing:	None
Front Shaft Indicator:	None	Thermal Device - Winding:	None
Heater Indicator:	No Heater	Vibration Sensor Indicator:	No Vibration Sensor
Insulation Class:	B	Winding Thermal 1:	None
		Winding Thermal 2:	None

Nameplate NP1256L										
CAT.NO.	WCL1509T									
SPEC.	37E284X77									
HP	7.5									
VOLTS	230									
AMP	37									
RPM	3450									
FRAME	213TCZ				HZ	60			PH	1
SER.F.	1.15		CODE	G	DES	L		CLASS	B	
NEMA-NOM-EFF	81		PF	82						
RATING	40C AMB-CONT									
CC									USABLE AT 208V	
DE	6309				ODE	6206				
ENCL	OPEN		SN							

AC Induction Motor Performance Data

Record # 11980 - Typical performance - not guaranteed values

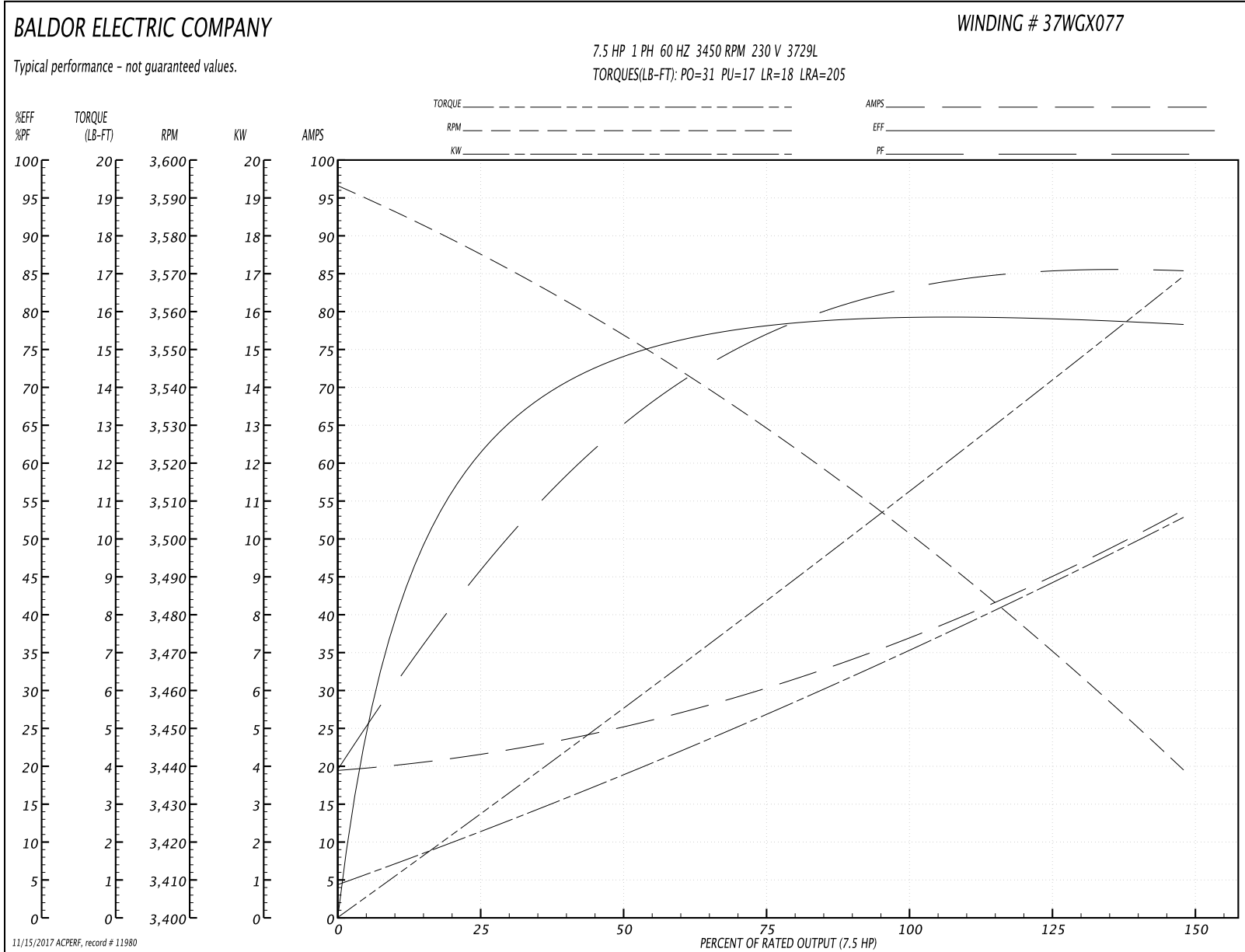
Winding: 37WGX077-R001	Type: 3729L	Enclosure: OPEN
-------------------------------	--------------------	------------------------

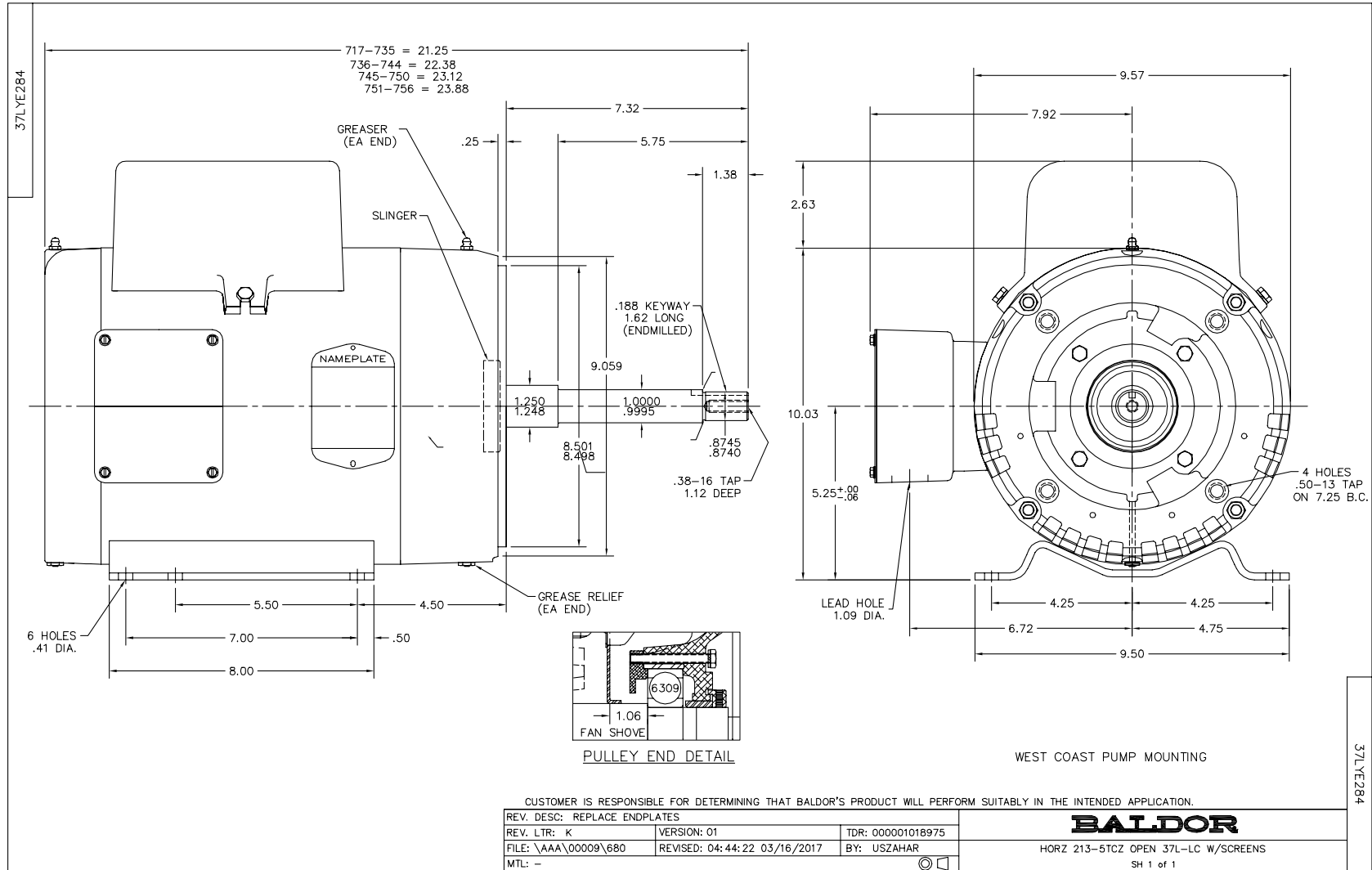
Nameplate Data				230 V, 60 Hz: Single Voltage Motor	
Rated Output (HP)	7.5			Full Load Torque	11.3 LB-FT
Volts	230			Start Configuration	direct on line
Full Load Amps	37			Breakdown Torque	31 LB-FT
R.P.M.	3450			Pull-up Torque	17 LB-FT
Hz	60	Phase	1	Locked-rotor Torque	18 LB-FT
NEMA Design Code	L	KVA Code	G	Starting Current	205 A
Service Factor (S.F.)	1.15			No-load Current	19.5 A
NEMA Nom. Eff.	81	Power Factor	82	Line-line Res. @ 25°C	0.23 Ω A Ph 0.799 Ω B Ph
Rating - Duty	40C AMB-CONT			Temp. Rise @ Rated Load	58°C
S.F. Amps				Temp. Rise @ S.F. Load	73°C

Load Characteristics 230 V, 60 Hz, 7.5 HP

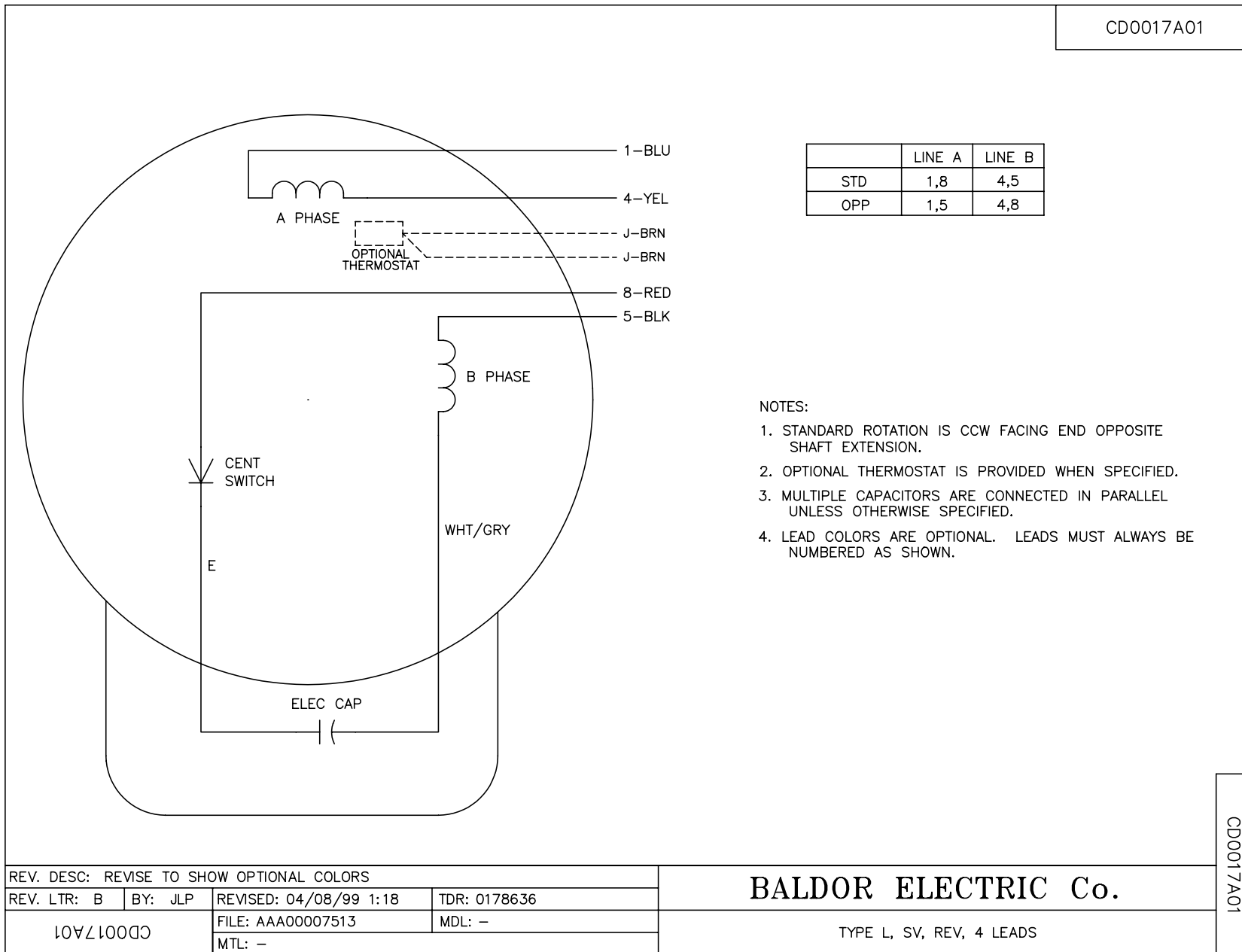
% of Rated Load	25	50	75	100	125	150	S.F.
Power Factor	46	65	76	82	85	87	0
Efficiency	61.3	73.9	78.2	79.5	79.3	78.1	0
Speed	3574	3552	3528	3502	3472	3438	0
Line amperes	21.6	25.5	30.1	37.4	45	53.7	42

Performance Graph at 230V, 60Hz, 7.5HP Typical performance - Not guaranteed values





CD0017A01



REV. DESC: REVISE TO SHOW OPTIONAL COLORS			
REV. LTR: B	BY: JLP	REVISED: 04/08/99 1:18	TDR: 0178636
CD0017A01		FILE: AAA00007513	MDL: -
		MTL: -	

BALDOR ELECTRIC Co.

TYPE L, SV, REV, 4 LEADS

CD0017A01