

# **BALDOR® • RELIANCE**

## **Product Information Packet**

### **GCP3305**

**OUTPUTHP,1700RPM,1PH,60HZ,PSLH,3316C,TEN**

Part Detail							
Revision:	X	Status:	PRD/A	Change #:		Proprietary:	No
Type:	AC	Elec. Spec:	33WGW200	CD Diagram:	CD0014A03	Mfg Plant:	
Mech. Spec:		Layout:	33E604W200K1	Poles:	04	Created Date:	02-28-2006
Base:		Eff. Date:	05-02-2017	Leads:	4#18		

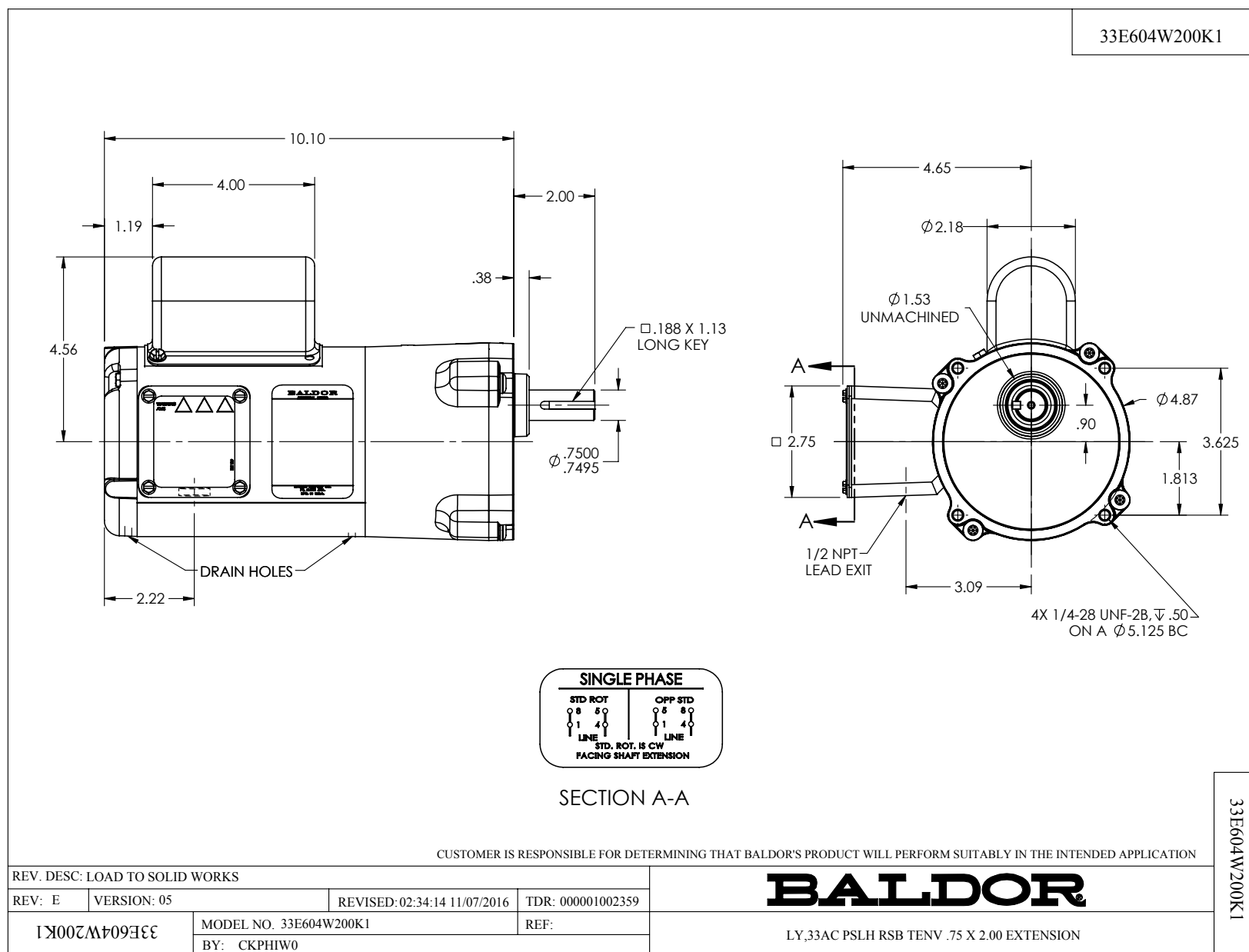
Specs			
Catalog Number:	GCP3305		
Enclosure:	TENV		
Frame Material:	Steel		
Output @ Frequency:	.170 HP @ 60 HZ		
Synchronous Speed @ Frequency:	1800 RPM @ 60 HZ		
Voltage @ Frequency:	115.0 V @ 60 HZ		
Agency Approvals:	CSA		
	UR		
Current @ Voltage:	1.900 A @ 115.0 V		
Duty Rating:	CONT		
Feedback Signal:	NONE		
Heater Indicator:	No Heater		
Insulation Class:	B		
Inverter Code:	Not Inverter		
KVA Code:	-		
Motor Lead Quantity/Wire Size:	4 @ 18 AWG		
Motor Type:	3316C		
Product Family:	General Purpose		

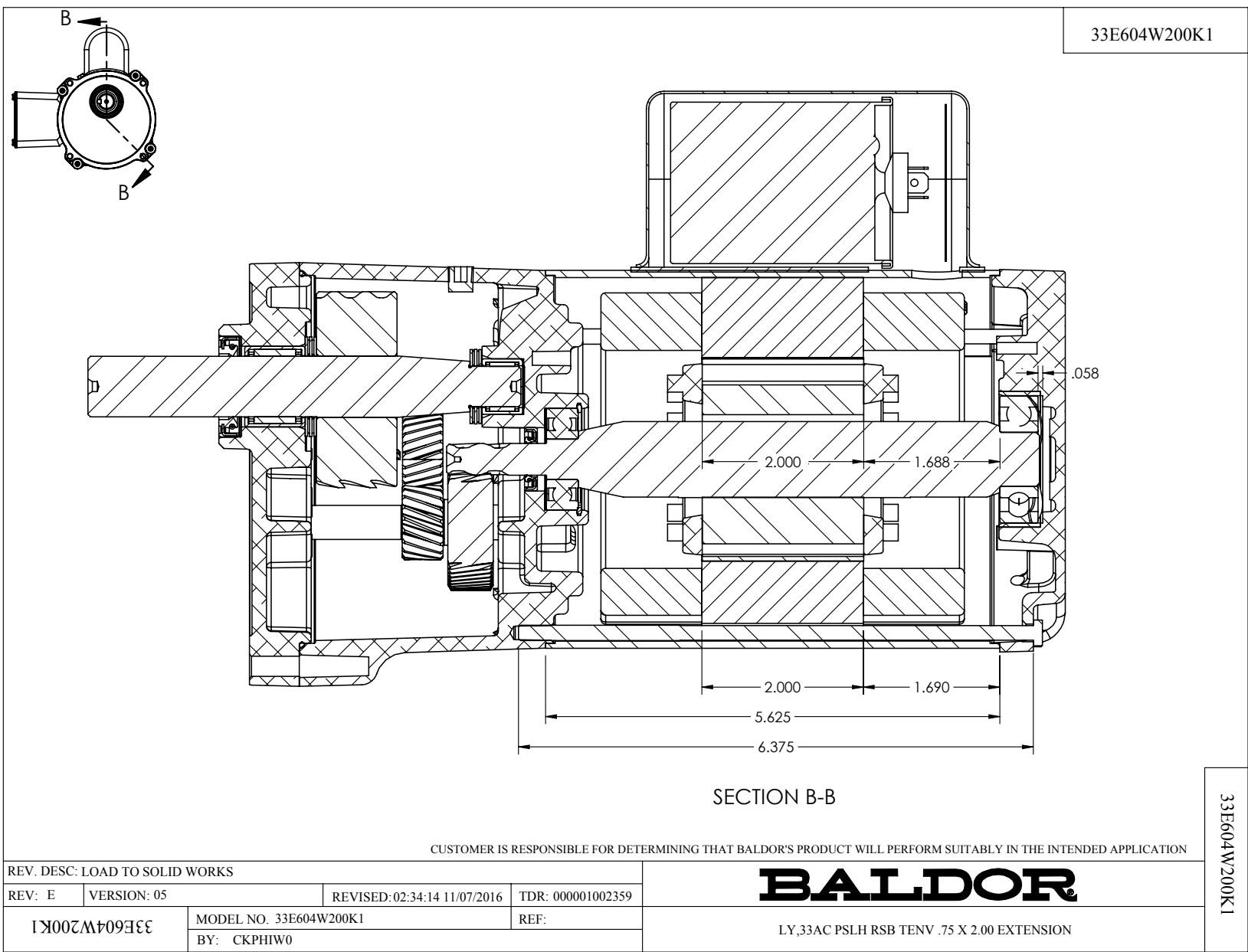
<b>RoHS Status:</b>	ROHS COMPLIANT		
<b>Shaft Rotation:</b>	Reversible		
<b>Motor Standards:</b>	NEMA		
<b>Starting Method:</b>	Full Voltage		
<b>Thermal Device - Winding:</b>	None		
<b>Winding Thermal 1:</b>	None		
<b>Winding Thermal 2:</b>	None		

**Nameplate NP1220A07**

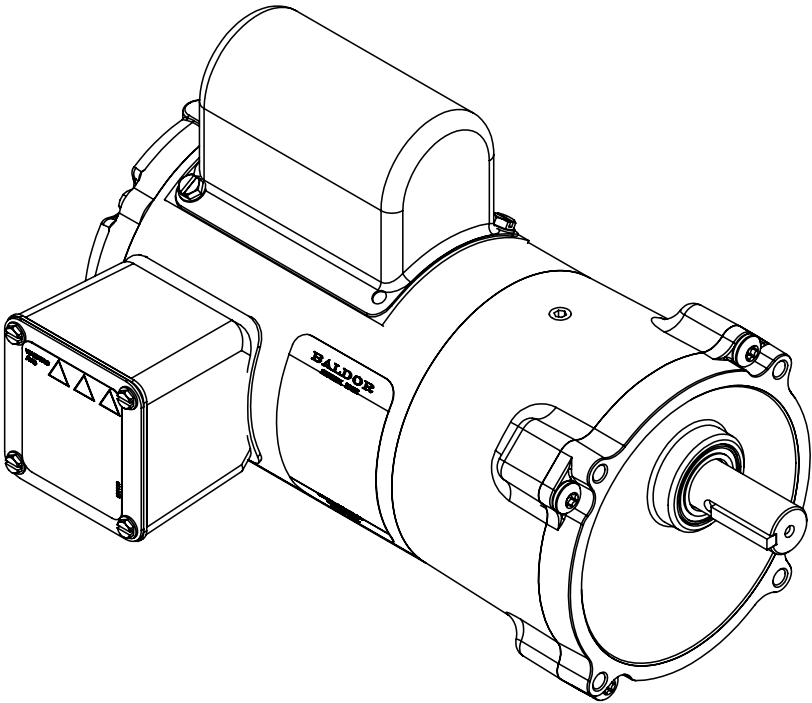
CAT.NO.	GCP3305									
SER.NO										
SPEC.	33E604W200K1									
HP	1/6	TE								
VOLTS	115									
AMP	2.1									
HZ	60					PH	1			
AMB.	40					DUTY	CONT			
CAP	20					CODE	-			
SER.F.	1.00					CLASS		B		
R.P.M.	56.6									
TORQ/IN LB	164									
RATIO	30:1									
APRV-CSA		APRV-UL								

No performance data has been  
assigned to this product.





ITEM NO.	PART NUMBER	QTY.
1	HG0076A01	1
2	BMH1714	2
3	BH1165A02	1
4	HW5002A95	1
5	HW3064E05	1
6	HW4600G58	1
7	BH1163A02	1
8	HA4021A05	1
9	33SH2668R01	1
10	33RC4116-00	1
11	BG6203C03	1
12	33SA9200R155	1
13	35GS3003A01	1
14	33CB4800A01	1
15	OC3020F12	1
16	NS2501A01	1
17	51XB1016A05	2
18	NS2512A01	1
19	34GS1029A01	1
20	34CB3002A16	1
21	51XB1016A07	2
22	11XW1032G06	1
23	34GS1031A01	1
24	34CB4517	1
25	51XW0832A07	4
26	33EP3100A04	1
27	HW5109A05	1
28	HA3100A39	2
29	BGS01238	1
30	BGS01239	1
31	BGS01219	1
32	CG0012A01	1
33	RM1020A22	1
34	BH1163A03	1
35	HW4600G71	1
36	60XM2520A12	4
37	BMH1910	1
38	NP1220A07	1
39	LB1119	1
40	LC0899A57	1



CUSTOMER IS RESPONSIBLE FOR DETERMINING THAT BALDOR'S PRODUCT WILL PERFORM SUITABLY IN THE INTENDED APPLICATION

REV. DESC: LOAD TO SOLID WORKS			
REV: E	VERSION: 05	REVISED: 02:34:14 11/07/2016	TDR: 000001002359
33E604W200K1		MODEL NO. 33E604W200K1	REF:
		BY: CKPHIW0	

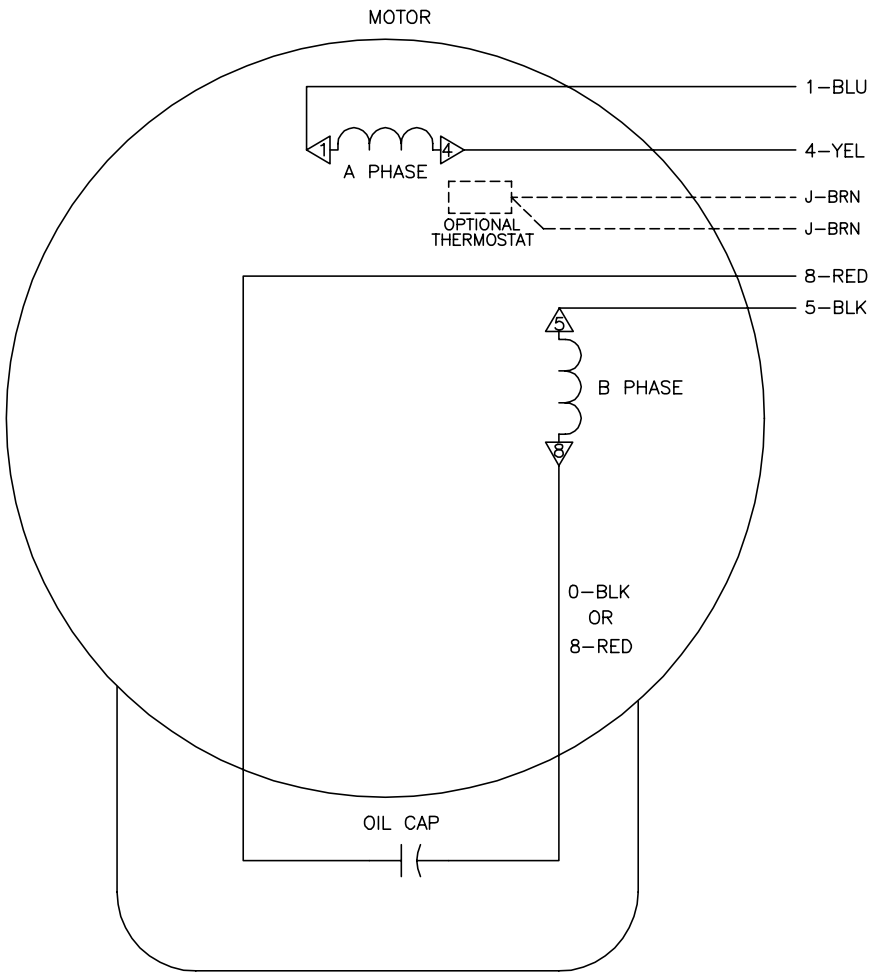
**BALDOR**

LY,33AC PSLH RSB TENV .75 X 2.00 EXTENSION


33E604W200K1



CD0014A03



	LINE A	LINE B
STD	1,8	4,5
OPP	1,5	4,8

- NOTES:
1. STANDARD ROTATION IS CCW FACING LEAD END
  2. OPTIONAL THERMOSTAT IS PROVIDED WHEN SPECIFIED.
  3. MULTIPLE CAPACITORS ARE CONNECTED IN PARALLEL UNLESS OTHERWISE SPECIFIED.
  4. LEAD COLORS ARE OPTIONAL. LEADS MUST ALWAYS BE NUMBERED AS SHOWN.
  5.  = MAGNET WIRE COIL END WITH I.D. #

REV. DESC: NW	VERSION: 00	TDR: 000000421500
REV. LTR: -	FILE: \CKA\00031\837	REVISED: 19:56:10 06/20/2007
CD0014A03	MTL: -	BY: CKNATLO

**Baldor • Dodge • Reliance**

TYPE C, SV, REV, 4 LEADS, CK

CD0014A03