

BALDOR® • ***RELIANCE***

Product Information Packet

EM4400T-12

100HP, 1785RPM, 3PH, 60HZ, 405T, A40064M, TEFC

| Part Detail | | | | | | | |
|-------------|----|-------------|------------|-------------|------------|---------------|------------|
| Revision: | G | Status: | PRD/A | Change #: | | Proprietary: | No |
| Type: | AC | Elec. Spec: | A40WG0690 | CD Diagram: | 416820-020 | Mfg Plant: | |
| Mech. Spec: | | Layout: | 617429-001 | Poles: | 04 | Created Date: | 07-17-2013 |
| Base: | | Eff. Date: | 02-24-2017 | Leads: | 12#4 | | |

| Specs | | | |
|--------------------------------|-------------------------|--|--|
| Catalog Number: | EM4400T-12 | | |
| Enclosure: | TEFC | | |
| Frame: | 405T | | |
| Frame Material: | Iron | | |
| Output @ Frequency: | 100.000 HP @ 60 HZ | | |
| Synchronous Speed @ Frequency: | 1800 RPM @ 60 HZ | | |
| Voltage @ Frequency: | 460.0 V @ 60 HZ | | |
| | 230.0 V @ 60 HZ | | |
| XP Class and Group: | None | | |
| XP Division: | Not Applicable | | |
| Agency Approvals: | CSA EEV | | |
| | CCSA US | | |
| Base Indicator: | Rigid | | |
| Bearing Grease Type: | Polyrex EM (-20F +300F) | | |
| Current @ Voltage: | 112.000 A @ 460.0 V | | |
| | 224.000 A @ 230.0 V | | |
| Design Code: | B | | |
| Duty Rating: | CONT | | |

| | | | |
|---------------------------------------|-----------------------|--|--|
| Insulation Class: | F | | |
| Inverter Code: | Inverter Ready | | |
| KVA Code: | G | | |
| Lifting Lugs: | Standard Lifting Lugs | | |
| Motor Lead Quantity/Wire Size: | 12 @ 4 AWG | | |
| Motor Type: | A40064M | | |
| Mounting Arrangement: | F1 | | |
| Power Factor: | 87 | | |
| Product Family: | Other | | |
| Pulley End Bearing Type: | Ball | | |
| Pulley Face Code: | Standard | | |
| Shaft Ground Indicator: | No Shaft Grounding | | |
| Shaft Rotation: | Reversible | | |
| Speed Code: | Single Speed | | |
| Motor Standards: | NEMA | | |
| Starting Method: | Wye Start - Delta Run | | |

| Nameplate NP2383L | | | | | | | | | | |
|-------------------------|------------|------|---------|---------------|----------|---------|-----------------------|--------|-------------|---|
| CAT.NO. | EM4400T-12 | | | SPEC NO. | P40G3925 | | | | | |
| HP | 100 | AMPS | 224/112 | | VOLTS | 230/460 | | DESIGN | B | |
| FRAME | 405T | RPM | 1785 | HZ | 60 | AMB | 40 | SF | 1.15 | |
| DRIVE END BEARING | 80BC03J30X | | | PHASE | 3 | DUTY | CONT | | INSUL.CLASS | F |
| OPP D.E. BEARING | 80BC03J30X | | | TYPE | P | ENCL | TEFC | CODE | G | |
| SER.NO. | | | | POWER FACTOR | 87 | | NEMA-NOM-EFFICIENCY | 95.4 | | |
| NEMA NOM/CSA QUOTED EFF | | | | MAX CORR KVAR | 18 | | GUARANTEED EFFICIENCY | 94.5 | | |
| | | | | MOTOR WEIGHT | 1326 | | | | | |

| | | | | | | |
|-----------|--------------|-------------------|-----------|--|-------------|---------|
| REL. S.O. | FRAME | HP | TYPE | PHASE/HERTZ | RPM | VOLTS |
| | 405T | 100 | P | 3/60 | 1785 | 230/460 |
| AMPS | DUTY | AMB °C/ INSUL. | S.F. | NEMA DESIGN | CODE LETTER | ENCL. |
| 224/112 | CONT | 40/F | 1.15 | B | G | FOXE |
| E/S | ROTOR | TEST S.O. | TEST DATE | STATOR RES. @25 °C OHMS (BETWEEN LINES) | | |
| 496453 | 418142-33-RE | --- | --- | .0123/.0492 | | |

PERFORMANCE

| LOAD | HP | AMPERES | RPM | POWER FACTOR % | EFFICIENCY % |
|---------|------|---------|------|----------------|--------------|
| NO LOAD | 0 | 28.6 | 1800 | 5.49 | 0 |
| 1/4 | 25.0 | 39.2 | 1796 | 64.3 | 93.0 |
| 2/4 | 50.0 | 59.5 | 1792 | 82.5 | 95.4 |
| 3/4 | 75.0 | 84.6 | 1788 | 86.7 | 95.7 |
| 4/4 | 100 | 112 | 1783 | 87.4 | 95.4 |
| 5/4 | 125 | 141 | 1778 | 87.3 | 94.9 |

SPEED TORQUE

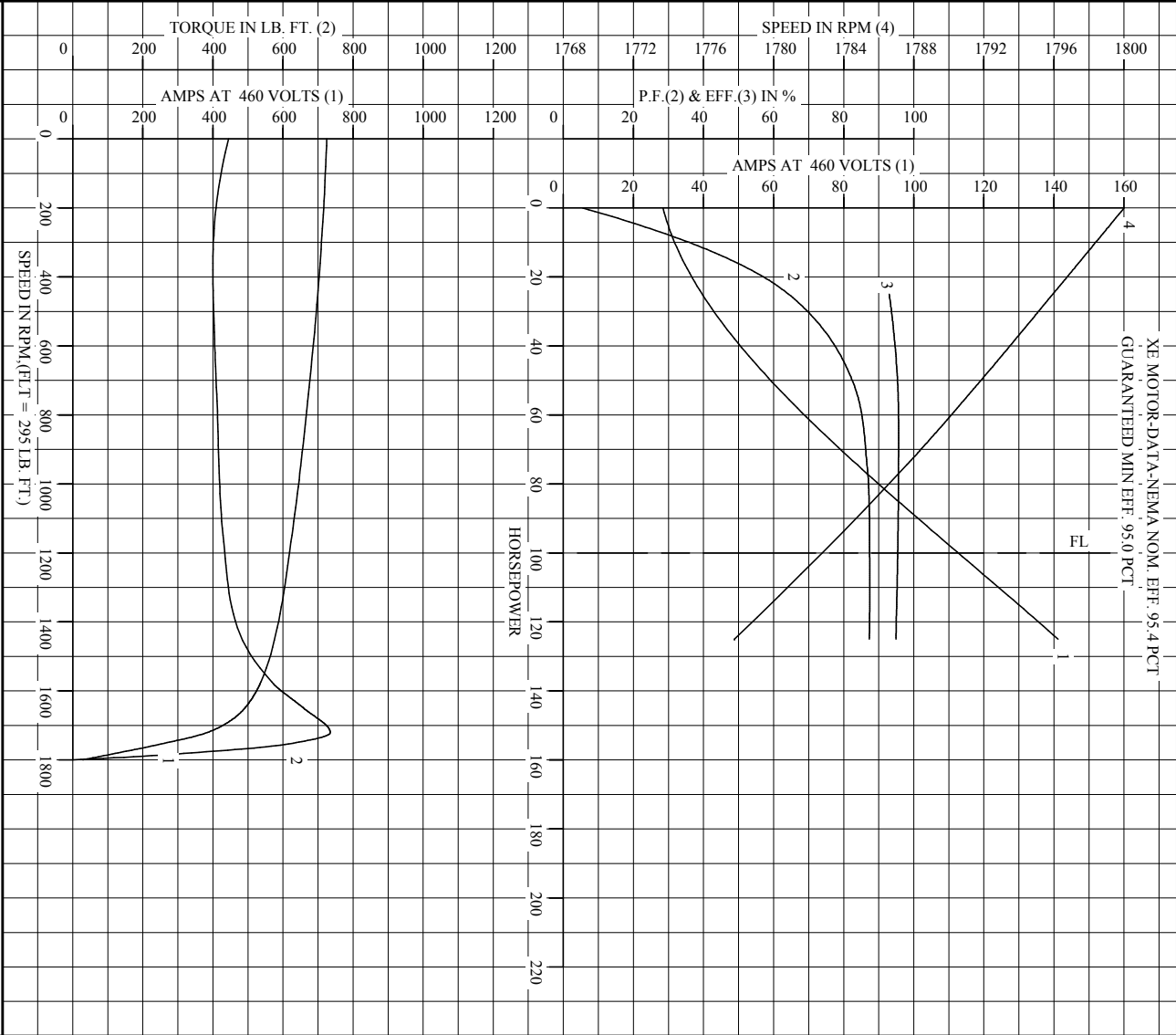
| | RPM | TORQUE % FULL LOAD | TORQUE LB.-FT. | AMPERES |
|--------------|------|--------------------|----------------|---------|
| LOCKED ROTOR | 0 | 151 | 445 | 725 |
| PULL UP | 360 | 136 | 400 | 706 |
| BREAKDOWN | 1721 | 250 | 735 | 382 |
| FULL LOAD | 1783 | 100 | 295 | 112 |

AMPERES SHOWN FOR 460. VOLT CONNECTION. IF OTHER VOLTAGE CONNECTIONS ARE AVAILABLE, THE AMPERES WILL VARY INVERSELY WITH THE RATED VOLTAGE

REMARKS: TYPICAL DATA
 XE MOTOR-DATA-NEMA NOM. EFF. 95.4 PCT
 GUARANTEED MIN EFF. 95.0 PCT

| | | |
|---------------|--|---|
| BALDOR | DR. BY R. I. STEPHENS | A-C MOTOR PERFORMANCE DATA |
| | CK. BY K. W. KANOUFF APP. BY K. W. KANOUFF DATE 06/07/96 | |
| | | A40WG0690-R001 ISSUE DATE 06/07/96 |

REL. S.O. _____ RPM 1785 S.F. 1.15 ROTOR 418142-33-RE
 FRAME 405T VOLTS 230/460 NEMA DESIGN B TEST S.O. TYPICAL DATA
 HP 100 AMPS 224/112 DUTY CONT DUTY LETTER G TEST DATE ---
 TYPE P AMB °C/INSUL 40/F ENCLOSURE FCXE STATOR RES. @ 25 °C .0123/ .0492
 PHASE/HERTZ 3/60 E/S 496453 OHMS (BETWEEN LINES)



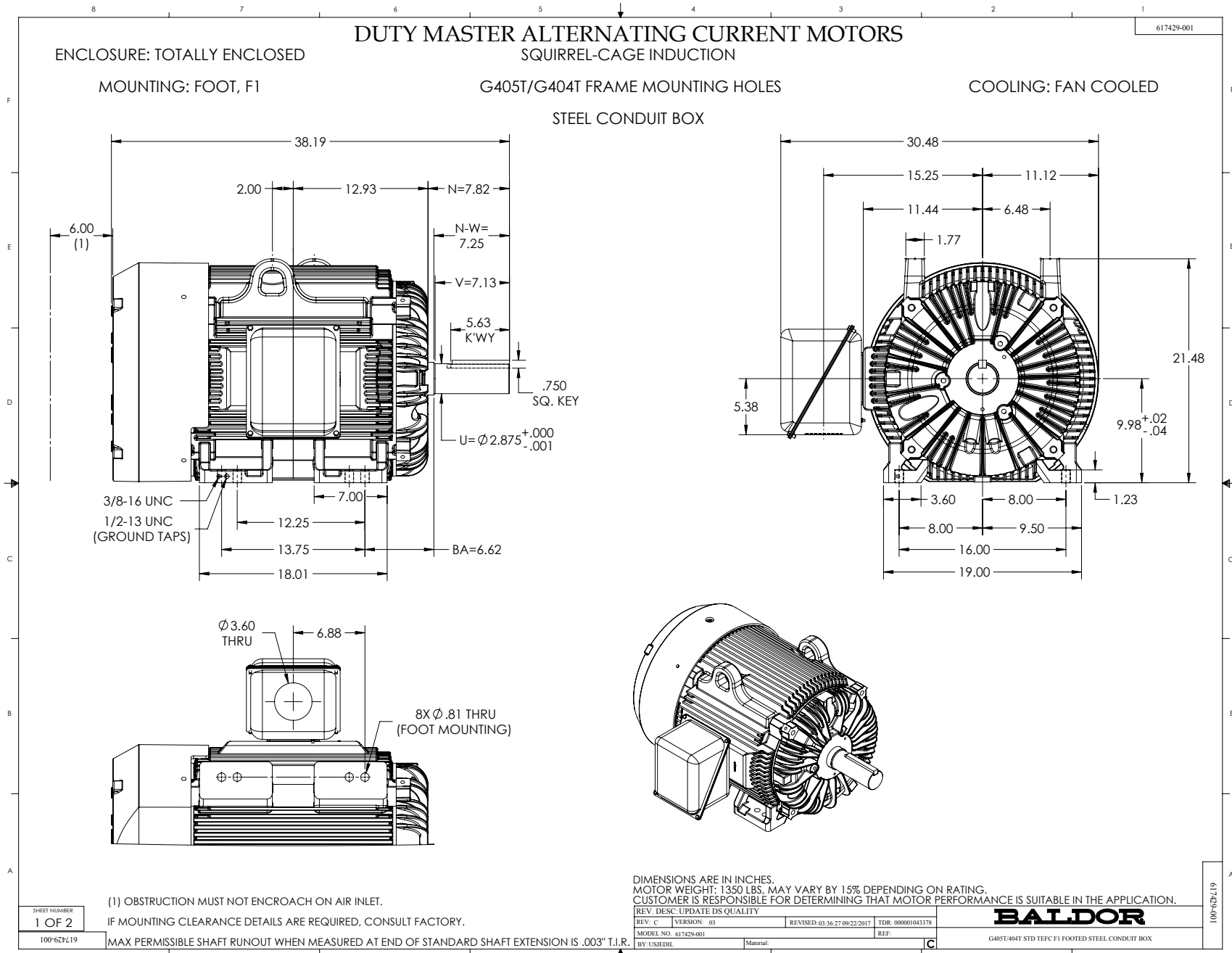
AMPERES SHOWN FOR 460 VOLT CONNECTION, IF OTHER VOLTAGE CONNECTIONS ARE AVAILABLE, THE AMPERES WILL VARY INVERSELY WITH THE RATED VOLTAGE.

BALDOR

DR. BY R.L. STEPHENS
 CK. BY K.W. KANOUFF
 APP. BY K.W. KANOUFF
 DATE 06/07/96

A-C MOTOR PERFORMANCE CURVES A40W/G0690-R001
 ISSUE DATE 06/07/96

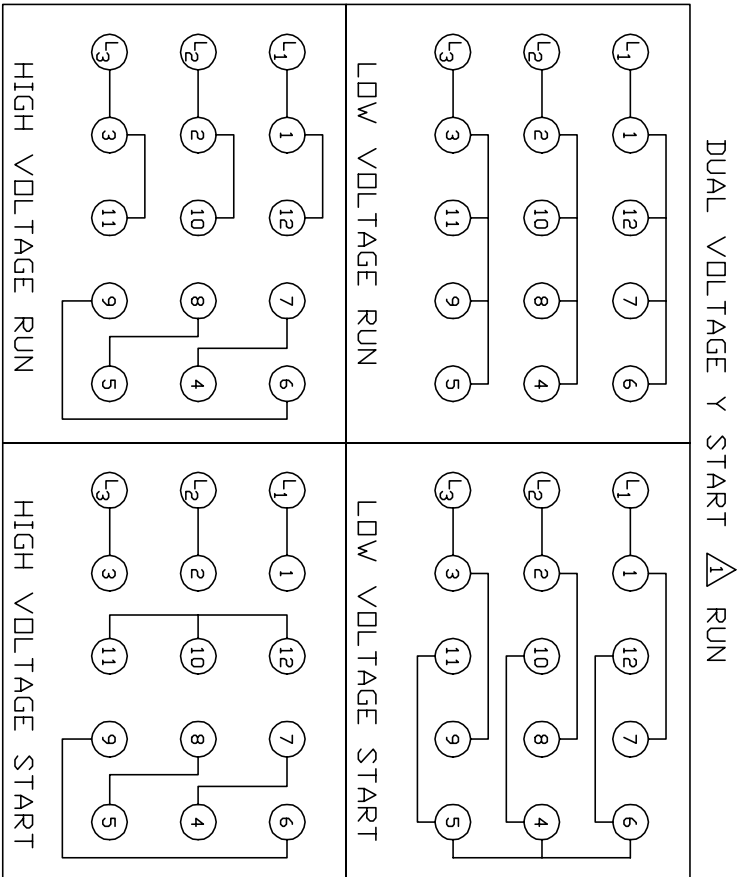
Printed on 2/2/11 11:22 @ usmghengdev1



416820-020

A-C MOTOR
CONNECTION DIAGRAM

416820-020



<410961-39/ 1575-AC>

CUSTOMER _____ CUSTOMER ORDER NO. _____ S. D. NO. _____

| | | |
|--------------------------|------------------------------|-------------------|
| REV. DESC: LOADED TO BUS | | |
| REV. LTR: A | VERSION: 01 | TDR: 000000553773 |
| FILE: \RAG\00011\270 | REVISED: 01:15:19 08/12/2010 | |
| MTL: - | BY: RAGMTC | |

BALDOR

A-C MOTOR CONNECTION DIAGRAM

SH 1 of 1