

BALDOR® • ***RELIANCE***

Product Information Packet

D50150P

150HP, 1750/2000RPM, DC, 409AT, DPFG, F1, N

Part Detail							
Revision:	-	Status:	PRD/A	Change #:		Proprietary:	No
Type:	DC	Prod. Type:		Elec. Spec:	K0108A A	CD Diagram:	15209
Enclosure:	DPFG	Mfg Plant:		Mech. Spec:		Layout:	877-2
Frame:	409AT	Mounting:	F1	Poles:	00	Created Date:	04-09-2015
Base:		Rotation:	R	Insulation:	F	Eff. Date:	04-13-2015
Field Type:		Literature:		Elec. Diagram:		Replaced By:	

Specs			
Enclosure:	DPFG		
Frame:	409AT		
Frame Material:	Steel		
Agency Approvals:	CSA		
Bearing Grease Type:	Polyrex EM (-20F +300F)		
Drip Cover:	No Drip Cover		
Duty Rating:	CONT		
Feedback Device:	NO FEEDBACK		
Field Winding Type:	STR. SHUNT		
Heater Indicator:	No Heater		
Insulation Class:	F		
Lifting Lugs:	Standard Lifting Lugs		
Mounting Arrangement:	F1		
Shaft Extension Location:	Pulley End		
Shaft Ground Indicator:	No Shaft Grounding		
Shaft Slinger Indicator:	No Slinger		

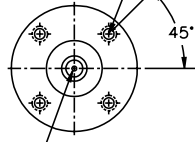
Motor Standards:	NEMA		
-------------------------	------	--	--

Nameplate NP1734										
CAT.NO.	D50150P			MODEL	T40R8002					
HP	150	RPM	1750/ 2000		FRAME	0409AT				
ARM V	500	ARM A	237.00		WOUND	STR. SHUNT				
FLD V	150/ 300	FLD A	4.70-3.40/2.35-1.70							
CONN		OHMS				CL	F			
ENCL	DPFG	DUTY	CONT			MX AMB	40			
P CODE	D	CTSR				SER.F.	1.0			
S/N				E/S	K0108A A					
	BRUSH:40019-3									
O.D.E. BRG.	6213	D.E. BRG.	6214	BRUSH					QTY	

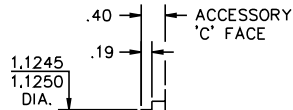
CUSTOMER NAME			MODEL NO.			MTG.		REMARKS:		
CUSTOMER P.O.			FRAME		R.P.M.	PHASE		INSUL		
CERTIFIED BY			H.P.		TYPE	VOLTS		AMB.		
DATE						ENCL		SHEET 2 OF 3		

UNITS: INCH	SCALE: NONE	PROPORTION: NONE	PART NUMBER	DWG. SIZE
			877	A

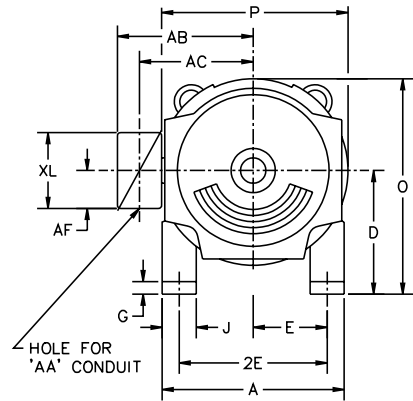
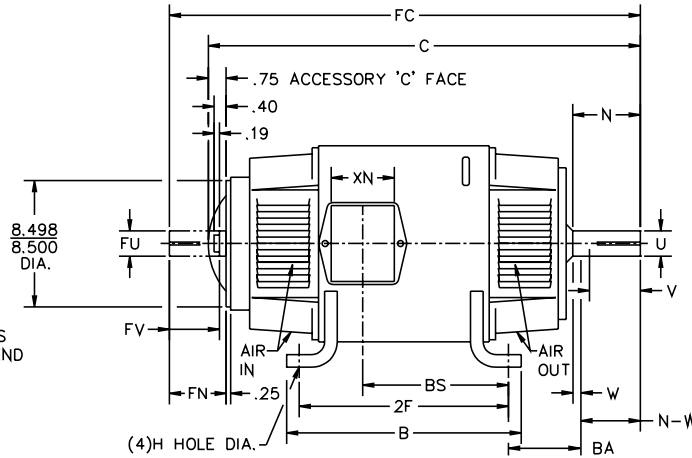
1/2-13UNC-2B THD X 1.00 DEEP
4-HOLES EQUALLY SPACED
ON A 7.250 DIA. B.C.



1/2-13 UNC-2B THD'S
1.00 DEEP IN SHAFT END



STANDARD COMM END
FOR SINGLE SHAFT EXTENSION



FRAME	FOOT MOUNTING				D.E. SHAFT EXTENSION						DRIVE KEY		ACC SHAFT EXTENSION			ACC KEY		FRAME							
	BA	E	2F	G	H	J	N	N-W	U	V	W	KEY-SQ.	KEY-LONG	FN	FU	FV	KEY-SQ.	KEY-LONG	A	B	C	FC	D	O	P
407AT	6.63	8.00	18.00	.81	.938	4.00	5.44	5.25	2.625	5.00 ³	.19	.625	4.00	4.95	2.375	4.70	.625	3.50	20.00	20.00	40.13	44.34	10.00 ²	20.19	20.38
L407AT	6.63	8.00	18.00	.81	.938	4.00	5.44	5.25	2.625	5.00 ³	.19	.625	4.00	4.95	2.375	4.70	.625	3.50	20.00	20.00	41.25	45.46	10.00 ²	20.19	20.38
409AT	6.63	8.00	22.00	.81	.938	4.00	5.44	5.25	2.625	5.00 ³	.19	.625	4.00	4.95	2.375	4.70	.625	3.50	20.00	24.00	44.63	48.84	10.00 ²	20.19	20.38
L409AT	6.63	8.00	22.00	.81	.938	4.00	5.44	5.25	2.625	5.00 ³	.19	.625	4.00	4.95	2.375	4.70	.625	3.50	20.00	24.00	45.75	49.96	10.00 ²	20.19	20.38
L4011AT	6.63	8.00	28.00	.81	.938	4.00	5.44	5.25	2.625	5.00 ³	.19	.625	4.00	4.95	2.375	4.70	.625	3.50	20.00	30.00	52.75	56.96	10.00 ²	20.19	20.38

FRAME	CONDUIT BOX							ARM APPROX. WK ² LBS.FT. ²	APPROXIMATE WEIGHT
	AA	AB	AC	AF	BS	XL	XN		
407AT	3	18.28	14.45	3.34	14.50	11.63	7.76	35.47	1317 ⁵
L407AT	3	18.28	14.45	3.34	15.62	11.63	7.76	35.47	1367 ⁵
409AT	3	18.28	14.45	3.34	19.00	11.63	7.76	43.81	1613 ⁵
L409AT	3	18.28	14.45	3.34	20.12	11.63	7.76	43.81	1663 ⁵
L4011AT	4	19.28	14.63	3.50	27.70	13.40	13.50	55.64	2260 ⁵

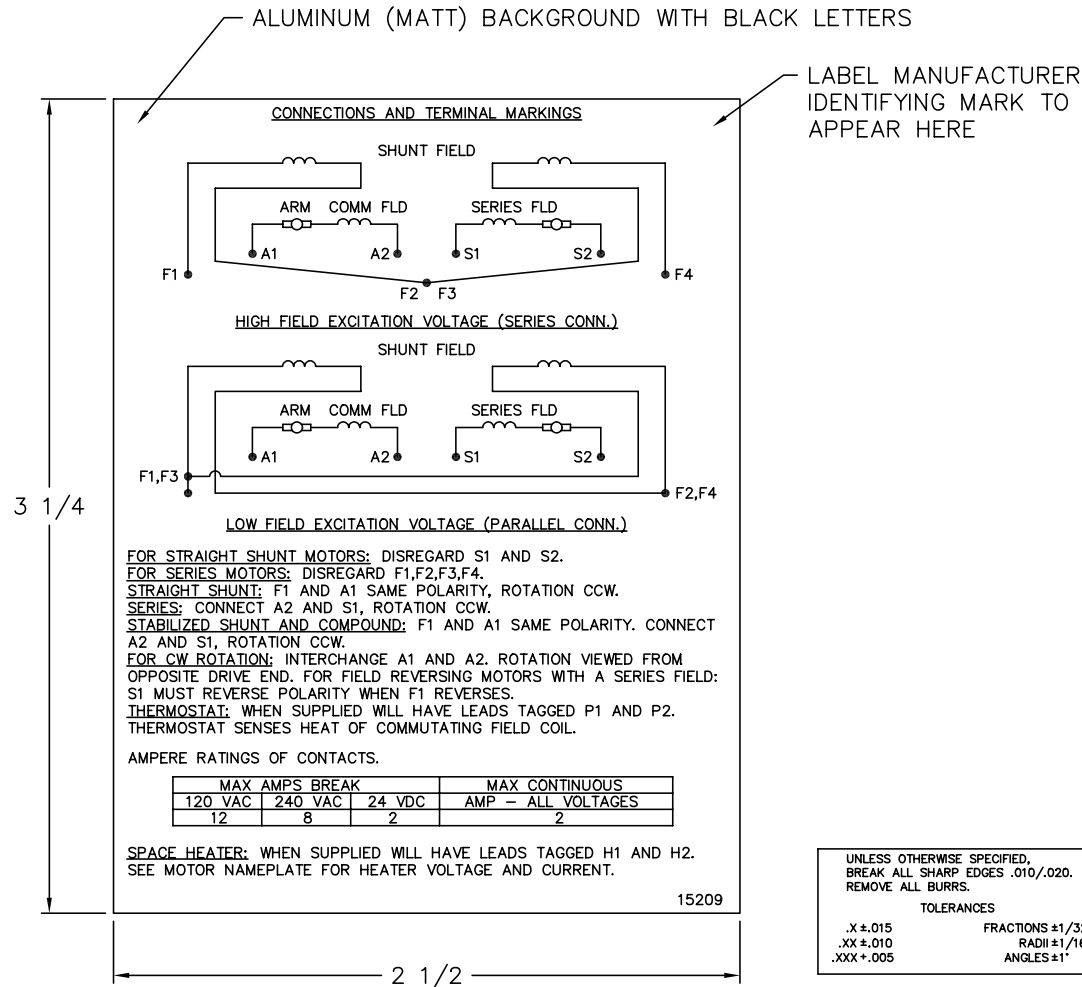
- 1) SHAFT DIAMETERS TO 1.500 TOLERANCE +.0000 - .0005
SHAFT DIAMETERS ABOVE 1.500 TOLERANCE +.0000 - .0010
SHAFT DIAMETERS TO 1.625 RUNOUT .002 T.I.R. MAX.
SHAFT DIAMETERS ABOVE 1.625 RUNOUT .003 T.I.R. MAX.
- 2) 'D' DIMENSION TOLERANCE +.000 - .060
- 3) 'Y' DIMENSION IS MAX. HUB LENGTH ON SHAFT
- 4) CONDUIT BOX CAN BE ROTATED IN 90° STEPS ON ITS OWN AXIS.
- 5) TOTAL WEIGHT OF MOTOR.
- 6) ALL DIMENSIONS NOT NOTED ARE NOMINAL DIMENSIONS CONSULT FACTORY FOR TOLERANCES.

FOR F1 OR F2 CONDUIT BOX
LOCATION SEE SALES ORDER

B	54100	ADD L4011AT FRAME	CSL	3-16-1994
REV.	ECO.	DESCRIPTION	BY	DATE

DESIGNER CSL 7-19-91	BALDOR
ENGINEER RFL 7-19-91	
ENGINEER DAG 7-19-91	
MANUF. RWL 7-19-91	
TITLE: DIMENSION SHEET DPFG, STD AT SHEET 2 OF 3	
PART NUMBER 877	DWG. SIZE A
REV. B	

15209



NOTE:
 MATERIAL .005 MINIMUM FULL HARD ALUMINUM DULL FINISH.
 TEMP. RANGE -20°C TO +125°C MAXIMUM.
 FOR INDOOR AND OUTDOOR MOUNTING BACK.
 METAL, PRESSURE SENSITIVE BACK. MUST MEET CSA STANDARD.
 THE CSA IDENTIFYING MARK OF THE LABEL MANUFACTURER MUST APPEAR IN THE UPPER RIGHT HAND CORNER AS INDICATED.

MATL: NOTED

REV: G CHANGE ALL "NAMEPLATE" TEXT TO "LABEL"

60Z91

SCALE: -

BY: BKW

REVISED: 02/19/97

FILE: CHB00002485

TDR: 0115147

BALDOR ELECTRIC Co.

LABEL, CONNECTIONS AND TERMINAL MARKINGS DC

15209