

BALDOR® • **RELIANCE**

Product Information Packet

ECP44302T-4

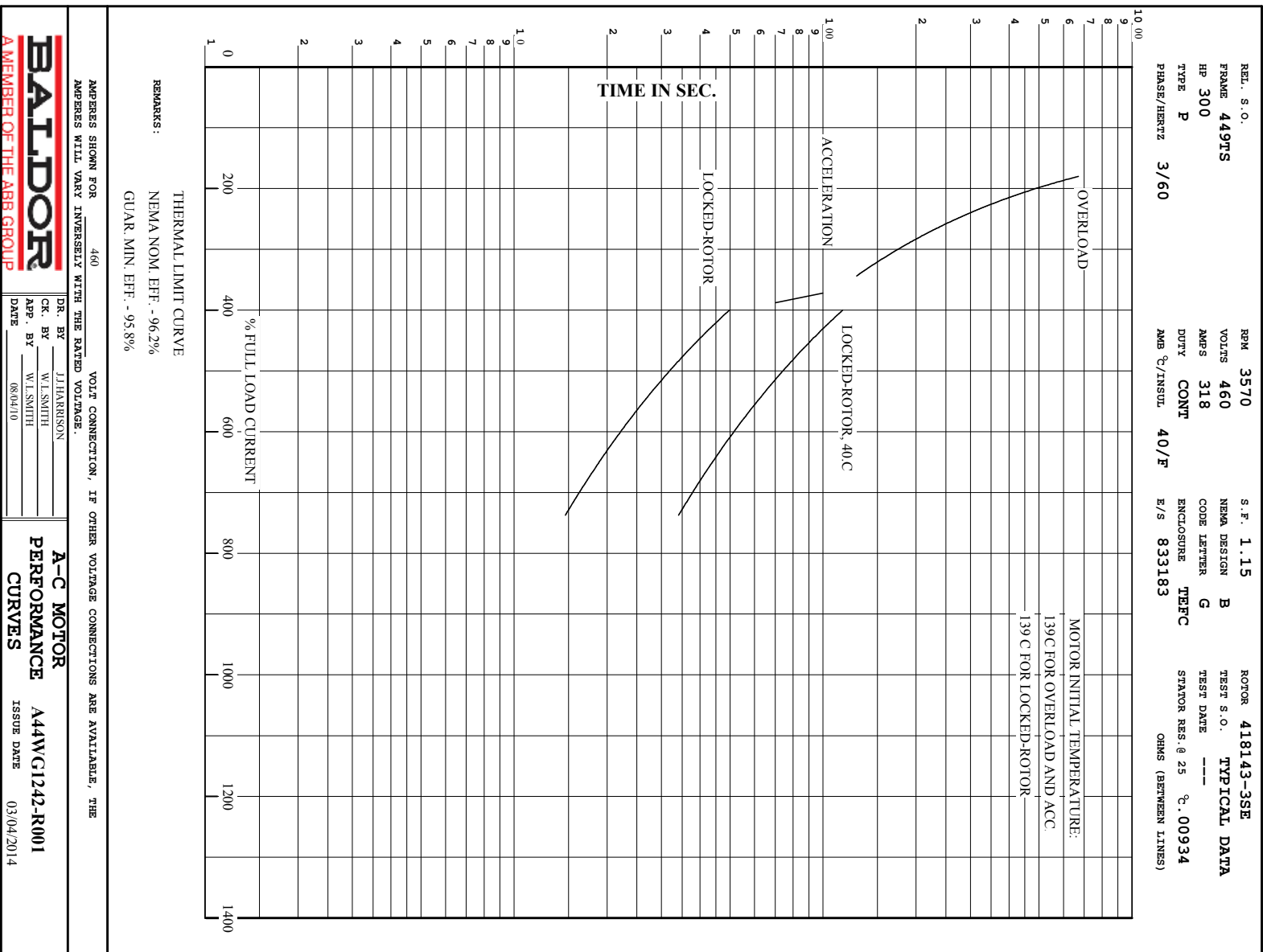
300HP,3570RPM,3PH,60HZ,449TS,A44128M,TEF

Part Detail							
Revision:	P	Status:	PRD/A	Change #:		Proprietary:	No
Type:	AC	Elec. Spec:	A44WG1242	CD Diagram:	416820-036	Mfg Plant:	
Mech. Spec:		Layout:	617427-006	Poles:	02	Created Date:	08-16-2012
Base:		Eff. Date:	10-16-2017	Leads:	3#2/0 (02 per group)		

Specs			
Catalog Number:	ECP44302T-4	Heater Indicator:	No Heater
Enclosure:	TEFC	Insulation Class:	F
Frame:	449TS	Inverter Code:	Not Inverter
Frame Material:	Iron	KVA Code:	G
Output @ Frequency:	300.000 HP @ 60 HZ	Lifting Lugs:	No Lifting Lugs
Synchronous Speed @ Frequency:	3600 RPM @ 60 HZ	Motor Lead Quantity/Wire Size:	6 @ 2/0 AWG
Voltage @ Frequency:	460.0 V @ 60 HZ	Motor Type:	A44128M
XP Class and Group:	None	Mounting Arrangement:	F1
XP Division:	Division II	Power Factor:	91
Agency Approvals:	CSA EEV	Pulley End Bearing Type:	Ball
Auxillary Box:	No Auxillary Box	Pulley Face Code:	Standard
Base Indicator:	Rigid	Shaft Ground Indicator:	No Shaft Grounding
Bearing Grease Type:	Polyrex EM (-20F +300F)	Shaft Rotation:	Reversible
Constant Torque Speed Range:	30-60	Shaft Slinger Indicator:	No Slinger
Current @ Voltage:	318.000 A @ 460.0 V	Speed Code:	Single Speed
Design Code:	B	Motor Standards:	NEMA
Drip Cover:	No Drip Cover	Starting Method:	Direct on line
Duty Rating:	CONT	Thermal Device - Bearing:	None

Feedback Device:	NO FEEDBACK	Thermal Device - Winding:	None
		XP Temp Code:	T2C

Nameplate NP3238									
CAT NO	ECP44302T-4	SPEC NO.	P44G3953						
HP	300	AMPS	318	VOLTS	460	DESIGN	B		
FRAME	449TS	RPM	3570	HZ	60	AMB	40	SF	1.15
D.E. BRG.DATA	6313	O.D.E. BRG.DATA	6313	PH	3	DUTY	CONT	INSUL.CLASS	F
D.E. BRG.	65BC03J30X	TYPE	P	ENCL	TEFC	CODE	G	NEMA NOM EFFICIENCY	96.2
O.D.E. BRG.	65BC03J30X	POWER FACTOR	91	MAX CORR KVAR	30.0	GUARANTEED EFFICIENCY	95.8		
3/4 LOAD EFF.	96.5	TEMP	= 230						
TEMP CODE	T2C	CT HZ	30-60	VT HZ	0-60				
CHP HZ	60-75								
INVERTER-TEMP-CODE	T2C								
SER.NO.		MOTOR WEIGHT							



REL. S.O.	FRAME	HP	TYPE	PHASE/ HERTZ	RPM	VOLTS
	449TS	300	P	3/60	3570	460
AMPS	DUTY	AMB °C/ INSUL.	S.F.	NEMA DESIGN	CODE LETTER	ENCL.
318	CONT	40/F	1.15	B	G	TEFC
E/S	ROTOR	TEST S.O.	TEST DATE	STATOR RES. @25 °C OHMS (BETWEEN LINES)		
833183	418143-3SE	---	---	---		.00934

PERFORMANCE

LOAD	HP	AMPERES	RPM	POWER FACTOR %	EFFICIENCY %
NO LOAD	0	59.3	3600	6.34	0
1/4	75.0	109	3593	68.4	94.3
2/4	150	172	3586	84.8	96.3
3/4	225	244	3578	89.4	96.5
4/4	300	321	3571	90.8	96.4
5/4	375	402	3562	91.0	96.0
SPEED TORQUE					
	RPM	TORQUE % FULL LOAD	TORQUE LB.-FT.	AMPERES	
LOCKED ROTOR	0	159	703	2149	
PULL UP	1620	142	627	1977	
BREKDOWN	3464	274	1208	1062	
FULL LOAD	3571	100	441	321	

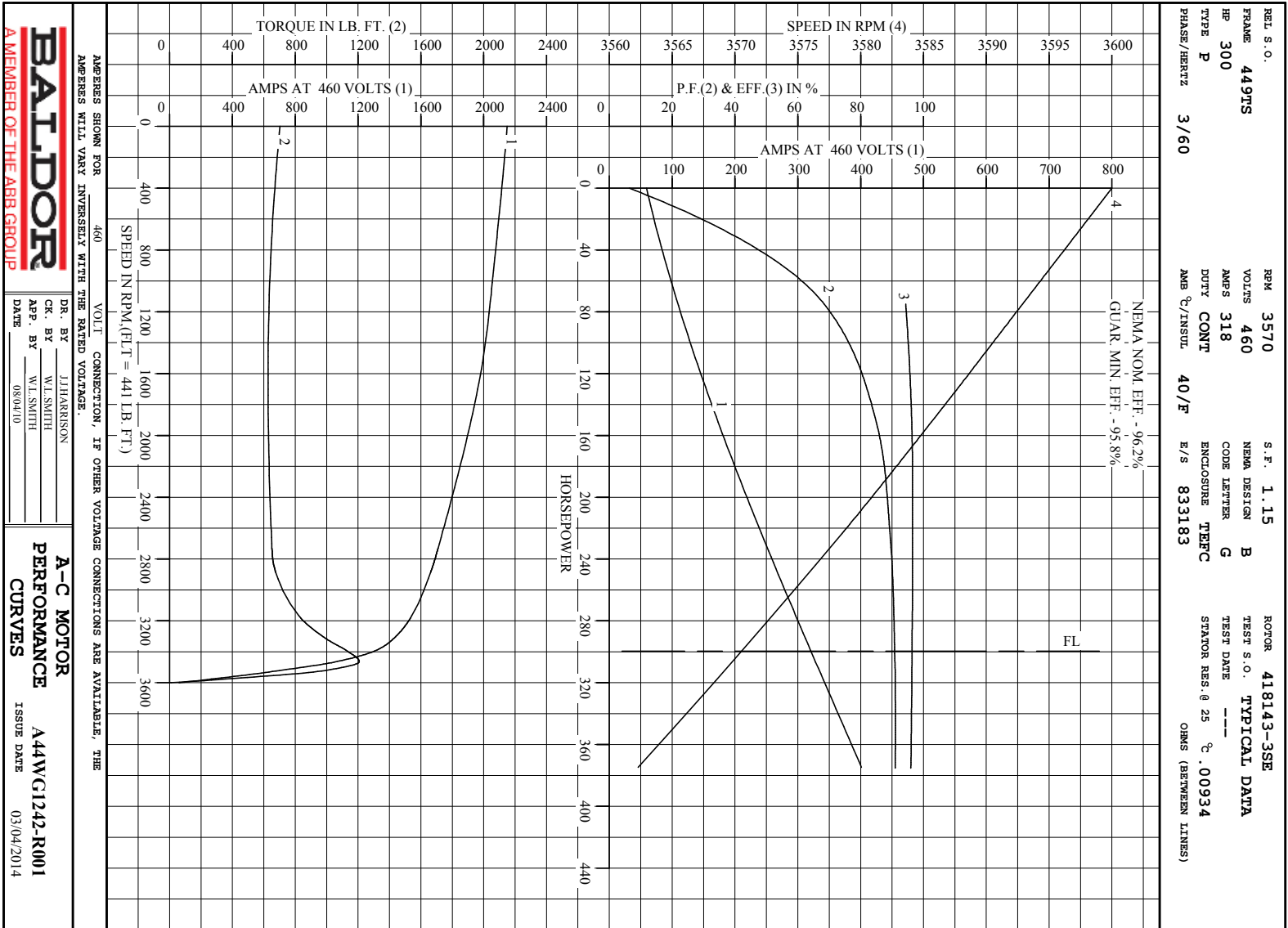
AMPERES SHOWN FOR 460. VOLT CONNECTION. IF OTHER VOLTAGE CONNECTIONS ARE AVAILABLE, THE AMPERES WILL VARY INVERSELY WITH THE RATED VOLTAGE

REMARKS: TYPICAL DATA
 NEMA NOM. EFF. - 96.2%
 GUAR. MIN. EFF. - 95.8%



DR. BY J.J. HARRISON
 CK. BY W.L. SMITH
 APP. BY W.L. SMITH
 DATE 08/04/10

A-C MOTOR PERFORMANCE DATA
 A44WG1242-R001
 ISSUE DATE 03/04/20



BALDOR
 A MEMBER OF THE ABB GROUP

DR. BY J. HARRISON
 CK. BY W. L. SMITH
 App. BY W. L. SMITH
 DATE 08/04/10

A-C MOTOR
PERFORMANCE
CURVES
 A44WC1242-R001
 ISSUE DATE 03/04/2014

Printed on 3/4/14 7:46 @ fagsun

DUTY MASTER ALTERNATING CURRENT MOTORS
SQUIRREL-CAGE INDUCTION

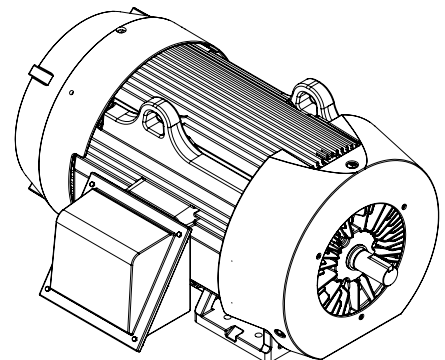
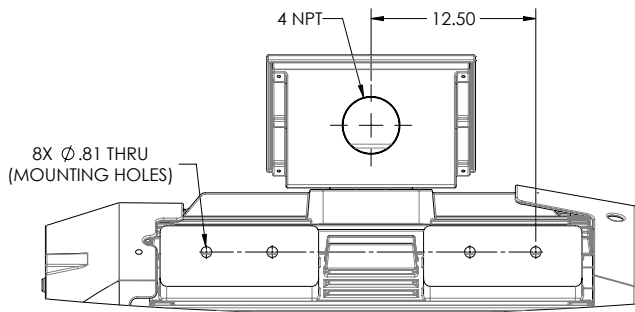
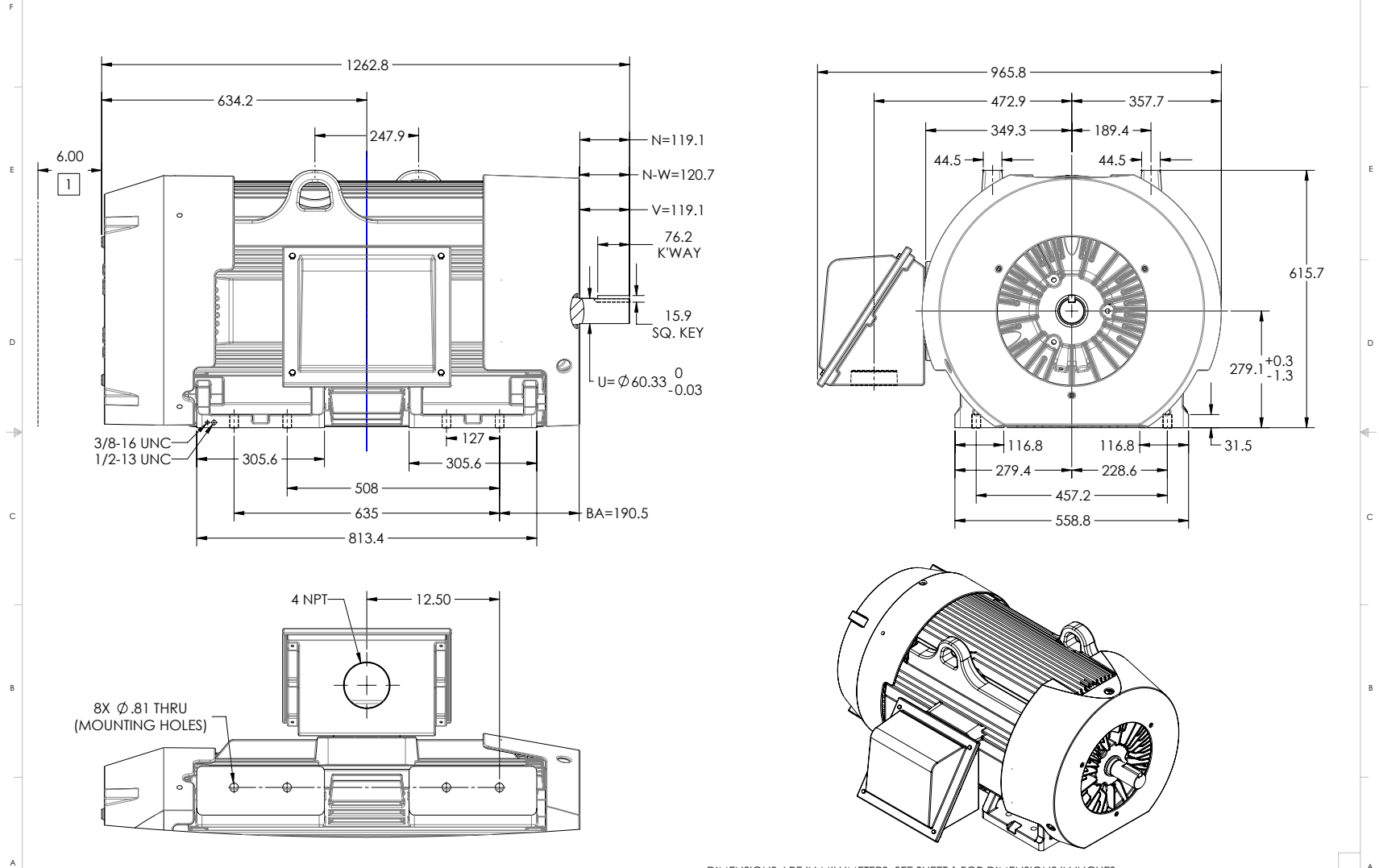
617427-006

ENCLOSURE: TOTALLY ENCLOSED

MOUNTING: FOOT, F-1

449TS/447TS FRAME MOUNTING HOLES

COOLING: FAN COOLED



1. OBSTRUCTION MUST NO ENCROACH ON AIR INLET
CONDUIT BOX LOCATED ON OPPOSITE SIDE WHEN F-2.
IF MOUNTING CLEARANCE DETAILS ARE REQUIRED, CONSULT FACTORY.
MAXIMUM PERMISSIBLE SHAFT RUNOUT WHEN MEASURED AT END OF
STANDARD SHAFT EXTENSION IS .08 MM T.I.R. TO 127 MM DIA.

DIMENSIONS ARE IN MILLIMETERS; SEE SHEET 1 FOR DIMENSIONS IN INCHES.
WEIGHT (KGS): 1380. MOTOR WEIGHTS MAY VARY BY 15% DEPENDING ON RATING.
CUSTOMER IS RESPONSIBLE FOR DETERMINING THAT MOTOR PERFORMANCE IS SUITABLE IN THE APPLICATION.

SHEET NUMBER
2 OF 2
9007-27219

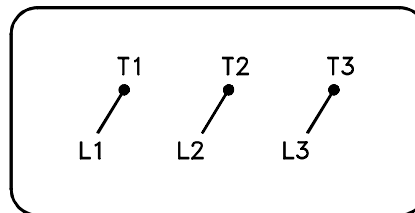
REV. DESC: CHANGED TO CAST IRON BOX, DS ON MULTIPLE SPECS
REV: C VERSION: 03 REVISED: 11-09-10 03:30/2016 TDR: 00000973129
MODEL NO. 617427-006
BY: USJEDIL

BALDOR
G449TS/447TS STD TEF C F1 FT -S/C CAST IRON C/BOX-

617427-006

416820-036

A-C MOTOR
CONNECTION DIAGRAM
STANDARD 3 LEAD CONNECTED



(N.P. 1575-BA)

416820-036

REV. DESC: LOADED TO BUS, C/R 335225		
REV. LTR: -	VERSION: 00	TDR: 000000538207
FILE: \MGA\00000\682	REVISED: 11:54:06 04/30/2010	
MTL: -	BY: RAGRA	

BALDOR

CONN DIAG - STANDARD 3 LEAD

SH 1 of 1