

BALDOR® • **RELIANCE**

Product Information Packet

CL3506

.75HP, 3450RPM, 1PH, 60HZ, 56C, 3424L, TEFC, F1

Part Detail							
Revision:	Z	Status:	PRD/A	Change #:		Proprietary:	No
Type:	AC	Elec. Spec:	34WG3405	CD Diagram:	CD0001	Mfg Plant:	
Mech. Spec:	34K053	Layout:	34LYK053	Poles:	02	Created Date:	
Base:	RG	Eff. Date:	05-09-2017	Leads:	6#18		

Specs			
Catalog Number:	CL3506	Heater Indicator:	No Heater
Enclosure:	TEFC	Insulation Class:	B
Frame:	56C	Inverter Code:	Not Inverter
Frame Material:	Steel	KVA Code:	K
Output @ Frequency:	.750 HP @ 60 HZ	Lifting Lugs:	No Lifting Lugs
Synchronous Speed @ Frequency:	3600 RPM @ 60 HZ	Locked Bearing Indicator:	Locked Bearing
Voltage @ Frequency:	230.0 V @ 60 HZ	Motor Lead Quantity/Wire Size:	6 @ 18 AWG
	115.0 V @ 60 HZ	Motor Lead Exit:	Ko Box
XP Class and Group:	None	Motor Lead Termination:	Flying Leads
XP Division:	Not Applicable	Motor Type:	3424L
Agency Approvals:	UR	Mounting Arrangement:	F1
	CSA	Power Factor:	74
Auxillary Box:	No Auxillary Box	Product Family:	General Purpose
Auxillary Box Lead Termination:	None	Pulley End Bearing Type:	Ball
Base Indicator:	Rigid	Pulley Face Code:	C-Face
Bearing Grease Type:	Polyrex EM (-20F +300F)	Pulley Shaft Indicator:	Standard
Blower:	None	Rodent Screen:	None
Current @ Voltage:	4.800 A @ 230.0 V	Shaft Extension Location:	Pulley End

	6.100 A @ 208.0 V	Shaft Ground Indicator:	No Shaft Grounding
	9.600 A @ 115.0 V	Shaft Rotation:	Reversible
Design Code:	N	Shaft Slinger Indicator:	No Slinger
Drip Cover:	No Drip Cover	Speed Code:	Single Speed
Duty Rating:	CONT	Motor Standards:	NEMA
Electrically Isolated Bearing:	Not Electrically Isolated	Starting Method:	Direct on line
Feedback Device:	NO FEEDBACK	Thermal Device - Bearing:	None
Front Face Code:	Standard	Thermal Device - Winding:	None
Front Shaft Indicator:	None	Vibration Sensor Indicator:	No Vibration Sensor

Nameplate NP1256L										
CAT.NO.	CL3506									
SPEC.	34K53-3405									
HP	.75									
VOLTS	115/230									
AMP	9.6/4.8									
RPM	3450									
FRAME	56C				HZ	60			PH	1
SER.F.	1.25		CODE	K	DES	N		CLASS	B	
NEMA-NOM-EFF	66		PF	74						
RATING	40C AMB-CONT									
CC									USABLE AT 208V	6.1
DE	6203				ODE	6203				
ENCL	TEFC		SN							
	SFA 11.6/5.8									

AC Induction Motor Performance Data
Record # 6684 - Typical performance - not guaranteed values

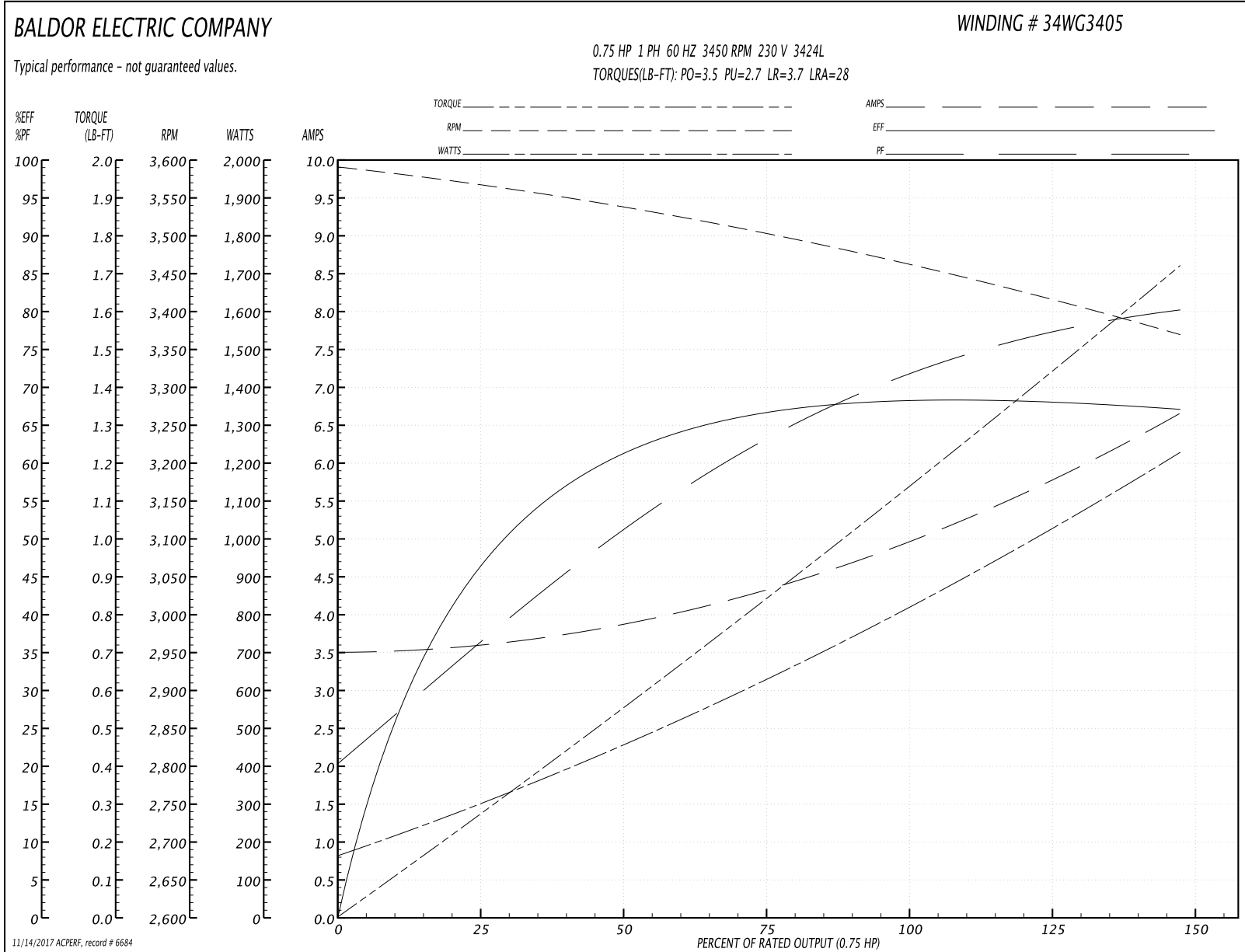
Winding: 34WG3405-R001	Type: 3424L	Enclosure: TEFC
-------------------------------	--------------------	------------------------

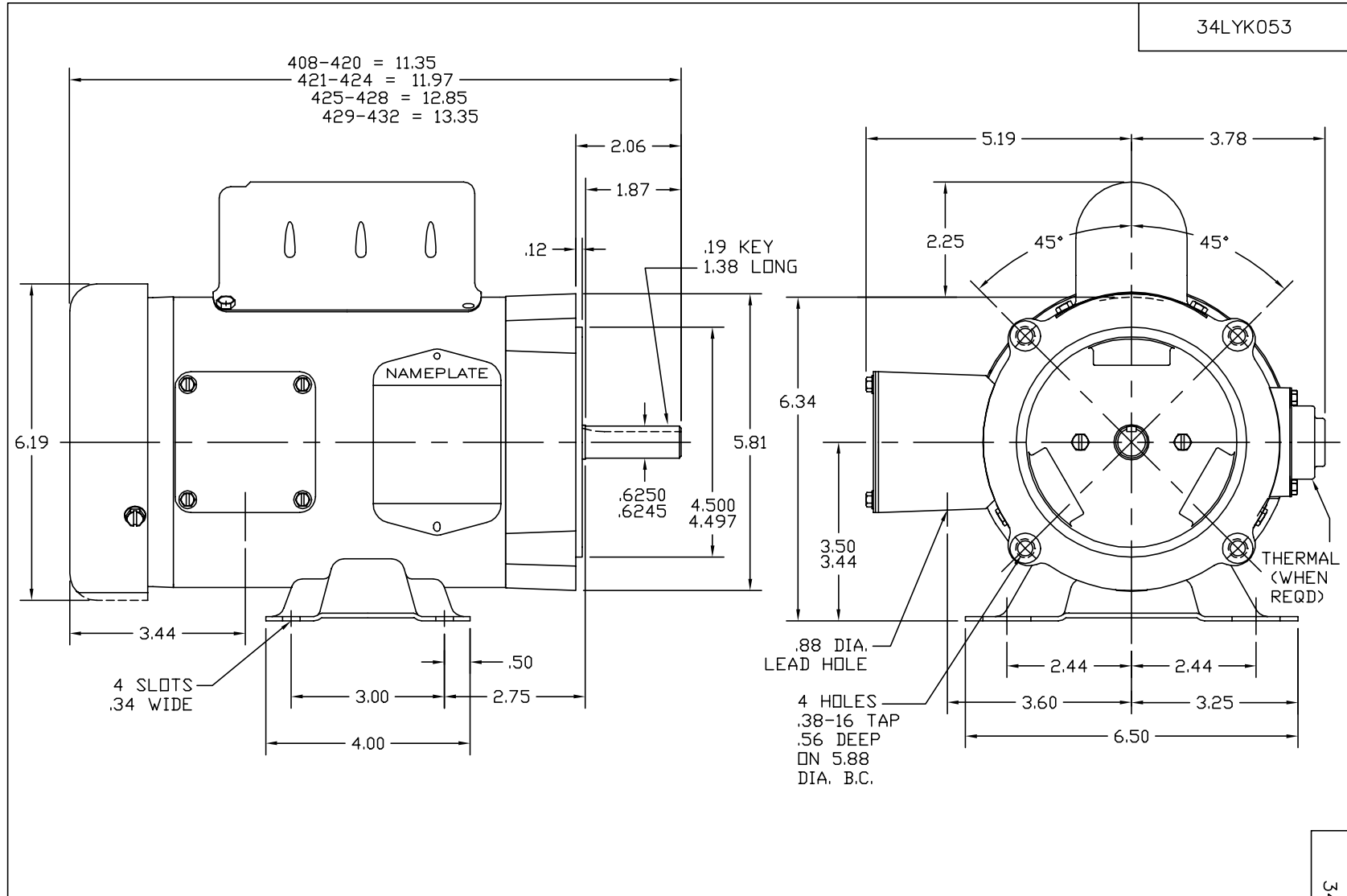
Nameplate Data				230 V, 60 Hz: High Voltage Connection	
Rated Output (HP)	.75			Full Load Torque	1.15 LB-FT
Volts	115/230			Start Configuration	direct on line
Full Load Amps	9.6/4.8			Breakdown Torque	3.5 LB-FT
R.P.M.	3450			Pull-up Torque	2.7 LB-FT
Hz	60	Phase	1	Locked-rotor Torque	3.7 LB-FT
NEMA Design Code	N	KVA Code	K	Starting Current	28 A
Service Factor (S.F.)	1.25			No-load Current	3.5 A
NEMA Nom. Eff.	66	Power Factor	74	Line-line Res. @ 25°C	2.5 Ω A Ph 2.5 Ω B Ph
Rating - Duty	40C AMB-CONT			Temp. Rise @ Rated Load	78°C
S.F. Amps	11.6/5.8			Temp. Rise @ S.F. Load	92°C

Load Characteristics 230 V, 60 Hz, 0.75 HP

% of Rated Load	25	50	75	100	125	150	S.F.
Power Factor	36	51	62	70	76	81	0
Efficiency	47.2	61.1	66.5	68.7	68.7	66.7	0
Speed	3561	3534	3500	3464	3421	3365	0
Line amperes	3.6	3.9	4.4	5	5.7	6.7	5.7

Performance Graph at 230V, 60Hz, 0.75HP Typical performance - Not guaranteed values





CUSTOMER IS RESPONSIBLE FOR DETERMINING THAT MOTOR PERFORMANCE IS SUITABLE IN THE APPLICATION.

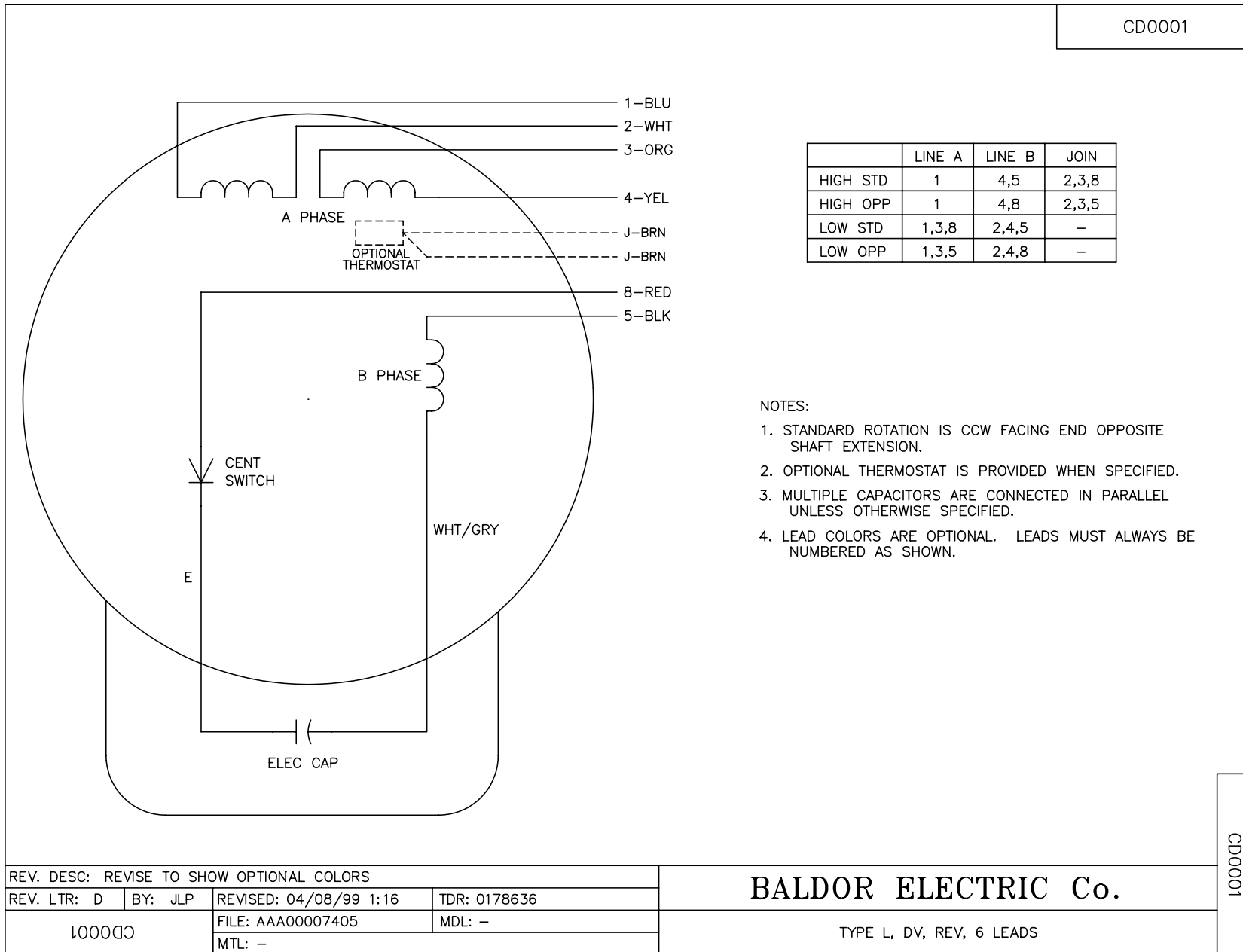
REV. DESC: UPDATED DRAWING			
REV. LTR: E	VERSION: 01	TDR: 000000424850	
34LYK053	FILE: \AAA\00025\923	REVISED: 06:11:13 03/13/2007	
	MTL: -	BY: ENROSTO	

BALDOR ELECTRIC Co.

STD HORZ 34L NEMA 56C TEFC W/35 CAPAC BOX

34LYK053

CD0001



CD0001

REV. DESC: REVISE TO SHOW OPTIONAL COLORS			
REV. LTR: D	BY: JLP	REVISED: 04/08/99 1:16	TDR: 0178636
100000		FILE: AAA00007405	MDL: -
		MTL: -	

BALDOR ELECTRIC Co.

TYPE L, DV, REV, 6 LEADS