

# **BALDOR**® • *RELIANCE*

## **Product Information Packet**

# **L5013**

**1.5HP,1725RPM,1PH,60HZ,184,X3628L,XPFC**

Part Detail							
Revision:	AK	Status:	PRD/A	Change #:		Proprietary:	No
Type:	AC	Elec. Spec:	36WG0079	CD Diagram:	CD0001	Mfg Plant:	
Mech. Spec:	36N007	Layout:	36LYN007	Poles:	04	Created Date:	
Base:	RG	Eff. Date:	09-10-2015	Leads:	4#14 A PH,2#16 B PH		

Specs			
Catalog Number:	L5013	Inverter Code:	Not Inverter
Enclosure:	XPFC	KVA Code:	L
Frame:	184	Lifting Lugs:	No Lifting Lugs
Frame Material:	Steel	Locked Bearing Indicator:	No Locked Bearing
Output @ Frequency:	1.500 HP @ 60 HZ	Motor Lead Quantity/Wire Size:	4 @ 14 AWG, A PH
Synchronous Speed @ Frequency:	1800 RPM @ 60 HZ	Motor Lead Exit:	Ko Box
Voltage @ Frequency:	115.0 V @ 60 HZ	Motor Lead Termination:	Flying Leads
	230.0 V @ 60 HZ	Motor Type:	3628L
XP Class and Group:	CLI GP D; CLII GP F,G	Mounting Arrangement:	F1
XP Division:	Division I	Power Factor:	70
Agency Approvals:	UL	Product Family:	General Purpose
	CSA	Pulley End Bearing Type:	Ball
Auxillary Box:	No Auxillary Box	Pulley Face Code:	Standard
Auxillary Box Lead Termination:	None	Pulley Shaft Indicator:	Standard
Base Indicator:	Rigid	Rodent Screen:	None
Bearing Grease Type:	Polyrex EM (-20F +300F)	Shaft Extension Location:	Pulley End
Blower:	None	Shaft Ground Indicator:	No Shaft Grounding
Current @ Voltage:	19.000 A @ 115.0 V	Shaft Rotation:	Reversible

	9.500 A @ 230.0 V	<b>Shaft Slinger Indicator:</b>	No Slinger
<b>Design Code:</b>	L	<b>Speed Code:</b>	Single Speed
<b>Drip Cover:</b>	No Drip Cover	<b>Motor Standards:</b>	NEMA
<b>Duty Rating:</b>	CONT	<b>Starting Method:</b>	Direct on line
<b>Electrically Isolated Bearing:</b>	Not Electrically Isolated	<b>Thermal Device - Bearing:</b>	None
<b>Feedback Device:</b>	NO FEEDBACK	<b>Thermal Device - Winding:</b>	Normally Closed Thermostat
<b>Front Face Code:</b>	Standard	<b>Vibration Sensor Indicator:</b>	No Vibration Sensor
<b>Front Shaft Indicator:</b>	None	<b>Winding Thermal 1:</b>	None
<b>Heater Indicator:</b>	No Heater	<b>Winding Thermal 2:</b>	None
<b>Insulation Class:</b>	B	<b>XP Temp Code:</b>	T3C

<b>Nameplate NP1426XPSL</b>	
NO.	<input type="text"/>
SER.	<input type="text"/>
SPEC.	36N07-79
CAT.NO.	L5013
HP	1.5
VOLTS	115/230
AMPS	19/9.5
RPM	1725
HZ	60
SER.F.	1.00
RATING	40C AMB-CONT
FRAME	184
USABLE AT 208V	<input type="text"/>
BLANK	<input type="text"/>

CC	<input type="text"/>
T. CODE	T3C
PH	1
CL	B
DES	L
CODE	L
NEMA-NOM-EFF	70
PF	70

**AC Induction Motor Performance Data**

Record # 20842 - Typical performance - not guaranteed values

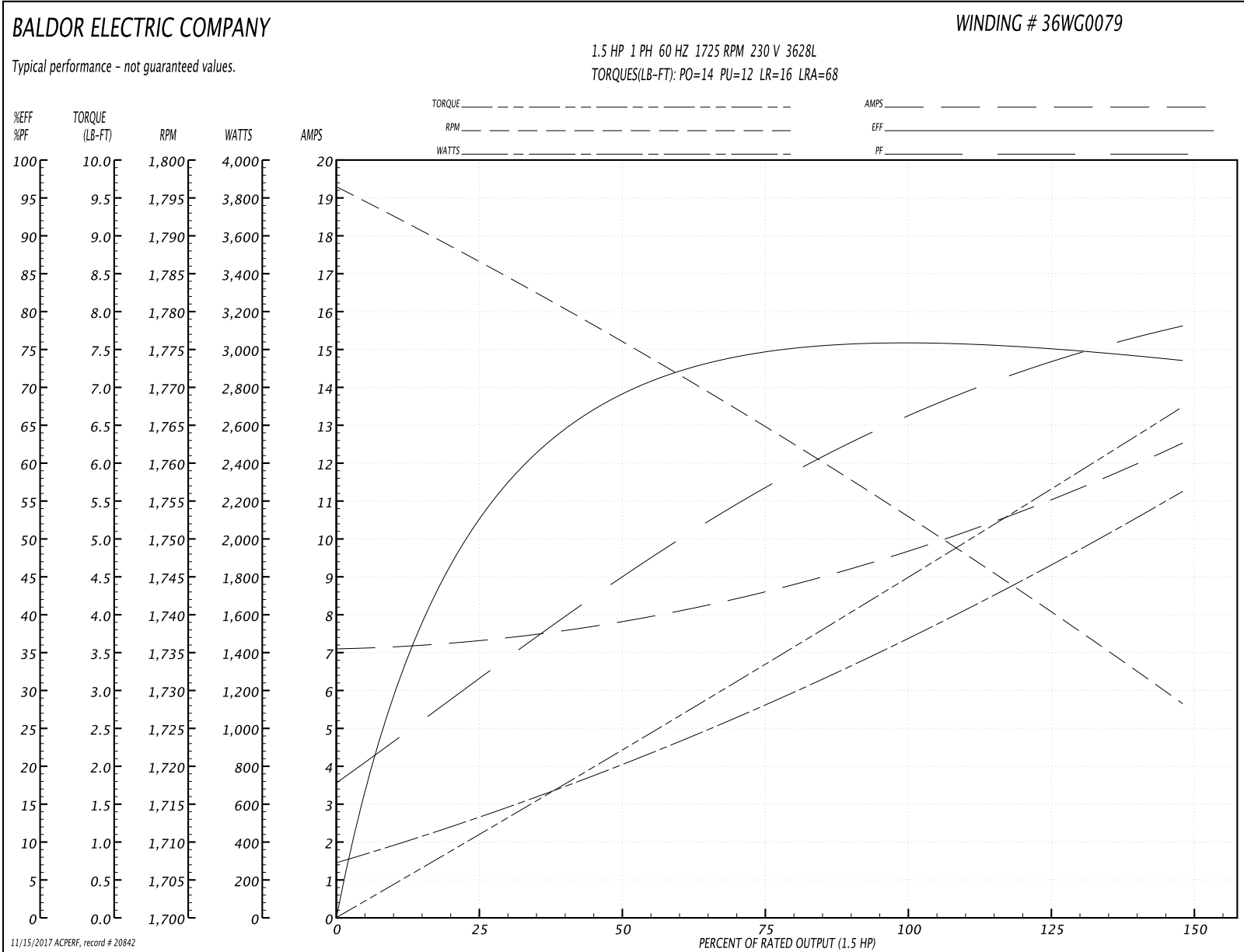
<b>Winding:</b> 36WG0079-R003	<b>Type:</b> 3628L	<b>Enclosure:</b> XPFC
-------------------------------	--------------------	------------------------

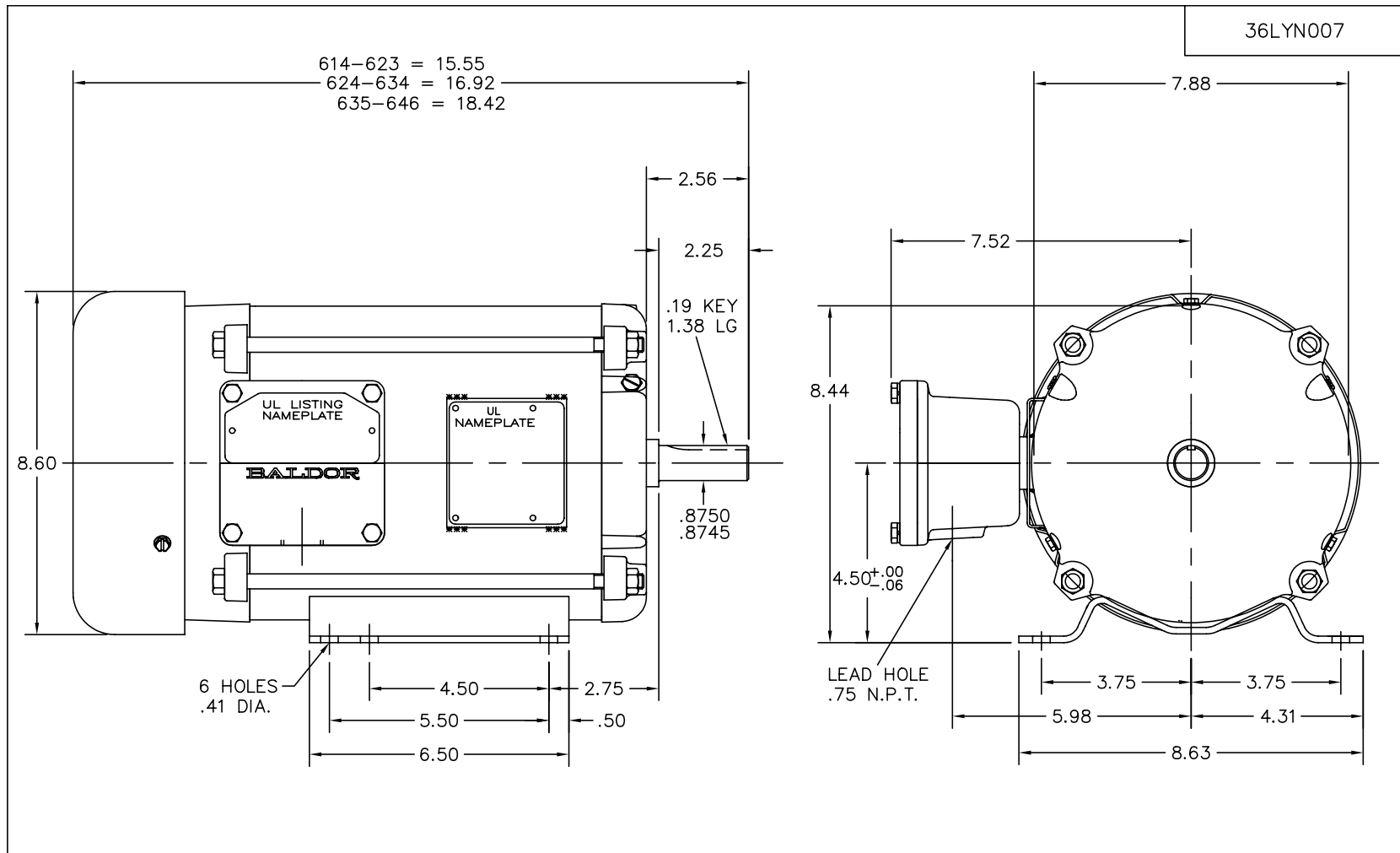
Nameplate Data				230 V, 60 Hz: High Voltage Connection	
Rated Output (HP)	1.5			Full Load Torque	4.5 LB-FT
Volts	115/230			Start Configuration	direct on line
Full Load Amps	19/9.5			Breakdown Torque	14 LB-FT
R.P.M.	1725			Pull-up Torque	12 LB-FT
Hz	60	Phase	1	Locked-rotor Torque	16 LB-FT
NEMA Design Code	L	KVA Code	L	Starting Current	68 A
Service Factor (S.F.)	1			No-load Current	7.1 A
NEMA Nom. Eff.	70	Power Factor	70	Line-line Res. @ 25°C	1.16 Ω A Ph 0.581 Ω B Ph
Rating - Duty	40C AMB-CONT			Temp. Rise @ Rated Load	67°C

Load Characteristics 230 V, 60 Hz, 1.5 HP

% of Rated Load	25	50	75	100	125	150	S.F.
Power Factor	38	50	61	68	75	79	0
Efficiency	56.2	66.9	72.6	77.7	76.2	72.8	0
Speed	1784	1776	1764	1754	1742	1727	0
Line amperes	7.3	7.8	8.8	9.6	10.9	12.6	10.4

Performance Graph at 230V, 60Hz, 1.5HP Typical performance - Not guaranteed values



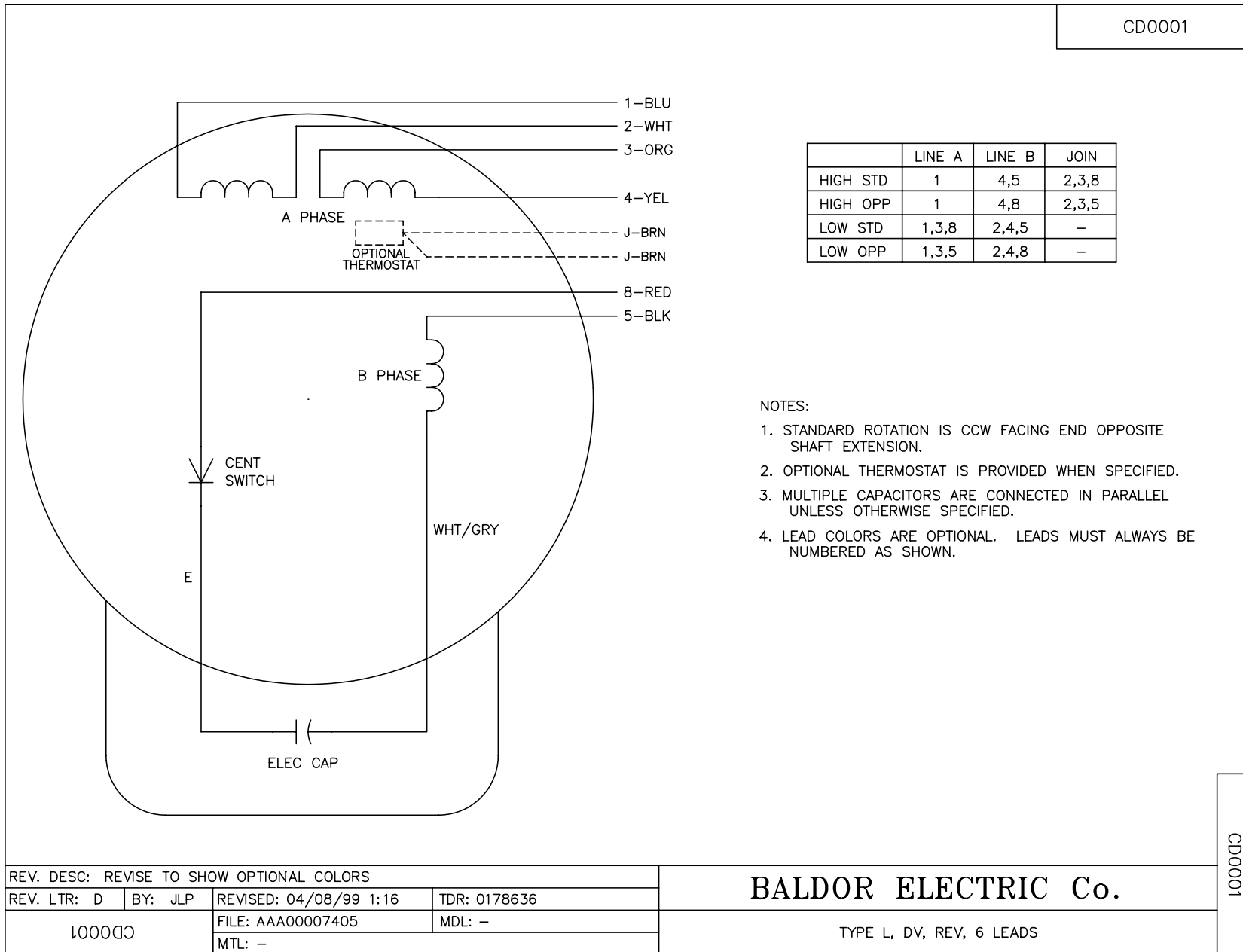


UL CLASS I - GROUP D - CLASS II - GROUPS F & G

CUST. NAME		CUST. P.O.		CERTIFIED BY		MODEL		INSUL		AMB							
H.P.		MTG		TYPE		R.P.M.		VOLTS		ENCL							
PHASE		FREQ		FRAME		<p><b>BALDOR ELECTRIC Co.</b></p> <p>HORZ 182-4 TEFC X36L CL-I, GP D-CL II, GP F&amp;G</p>											
REV. LTR: E   BY: JED   REVISED: 06/04/99 2:37   TDR: 0183315																	
FILE: AAA00004642   MDL: -																	
Z00NΛ79Σ				MTL: -													

36LYN007

CD0001



REV. DESC: REVISE TO SHOW OPTIONAL COLORS			
REV. LTR: D	BY: JLP	REVISED: 04/08/99 1:16	TDR: 0178636
100000		FILE: AAA00007405	MDL: -
		MTL: -	

**BALDOR ELECTRIC Co.**

TYPE L, DV, REV, 6 LEADS

CD0001