

# **BALDOR**® • *RELIANCE*

## **Product Information Packet**

# **VM3550**

**1.5HP,3450RPM,3PH,60HZ,56C,3424M,TEFC,F1**

Part Detail							
Revision:	X	Status:	PRD/A	Change #:		Proprietary:	No
Type:	AC	Prod. Type:	3424M	Elec. Spec:	34WG0283	CD Diagram:	CD0005
Enclosure:	TEFC	Mfg Plant:		Mech. Spec:	34A063	Layout:	34LYA063
Frame:	56C	Mounting:	F1	Poles:	02	Created Date:	
Base:	N	Rotation:	R	Insulation:	B	Eff. Date:	08-27-2014
Leads:	9#18					Replaced By:	
Literature:		Elec. Diagram:					

Nameplate NP1256L							
CAT.NO.	VM3550						
SPEC.	34A63-283						
HP	1.5						
VOLTS	208-230/460						
AMP	4.9-4.6/2.3						
RPM	3450						
FRAME	56C	HZ	60	PH	3		
SER.F.	1.15	CODE	L	DES	B	CLASS	B
NEMA-NOM-EFF	80	PF	74				
RATING	40C AMB-CONT						
CC		USABLE AT 208V	5.3				
DE	6203	ODE	6203				
ENCL	TEFC	SN					
	SFA 5.3-5/2.5						

**AC Induction Motor Performance Data**  
Record # 6569 - Typical performance - not guaranteed values

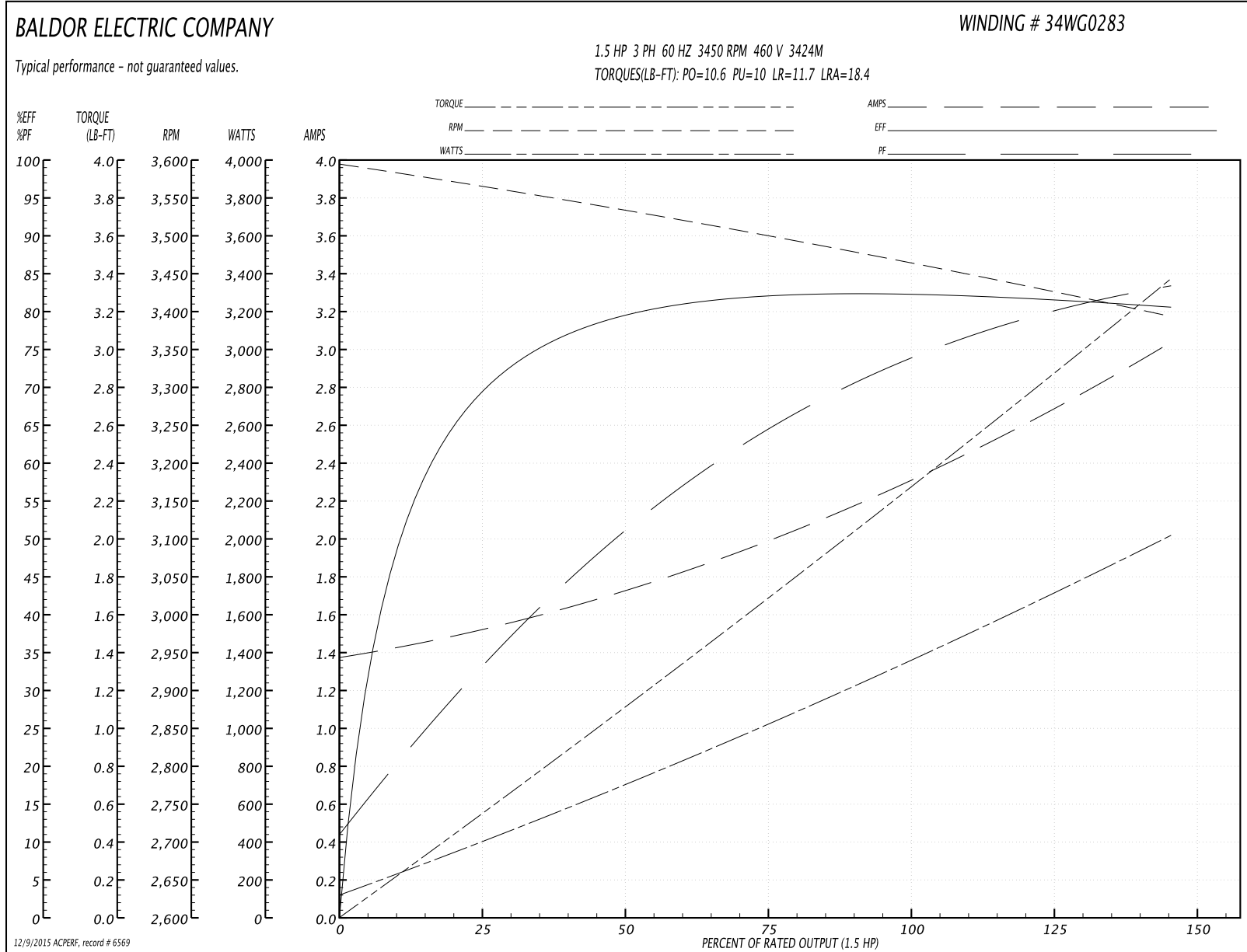
<b>Winding:</b> 34WG0283-R001	<b>Type:</b> 3424M	<b>Enclosure:</b> TEFC
-------------------------------	--------------------	------------------------

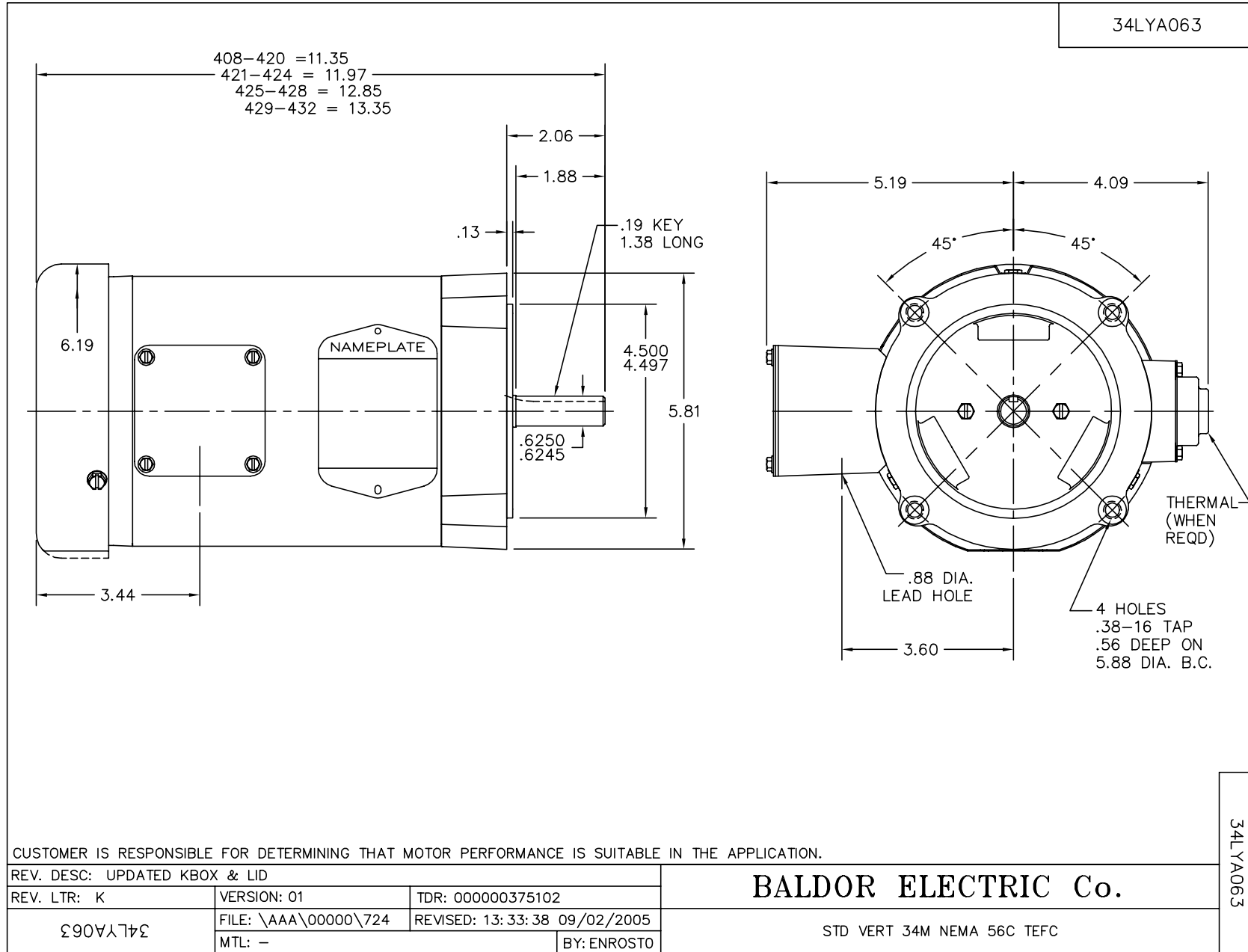
Nameplate Data				460 V, 60 Hz: High Voltage Connection	
Rated Output (HP)	1.5			Full Load Torque	2.25 LB-FT
Volts	208-230/460			Start Configuration	direct on line
Full Load Amps	4.9-4.6/2.3			Breakdown Torque	10.6 LB-FT
R.P.M.	3450			Pull-up Torque	10 LB-FT
Hz	60	Phase	3	Locked-rotor Torque	11.7 LB-FT
NEMA Design Code	B	KVA Code	L	Starting Current	18.4 A
Service Factor (S.F.)	1.15			No-load Current	1.4 A
NEMA Nom. Eff.	80	Power Factor	74	Line-line Res. @ 25°C	8.53 Ω
Rating - Duty	40C AMB-CONT			Temp. Rise @ Rated Load	71°C
S.F. Amps	5.3-5/2.5			Temp. Rise @ S.F. Load	83°C
				Rotor inertia	0.0223 LB-FT <sup>2</sup>

**Load Characteristics 460 V, 60 Hz, 1.5 HP**

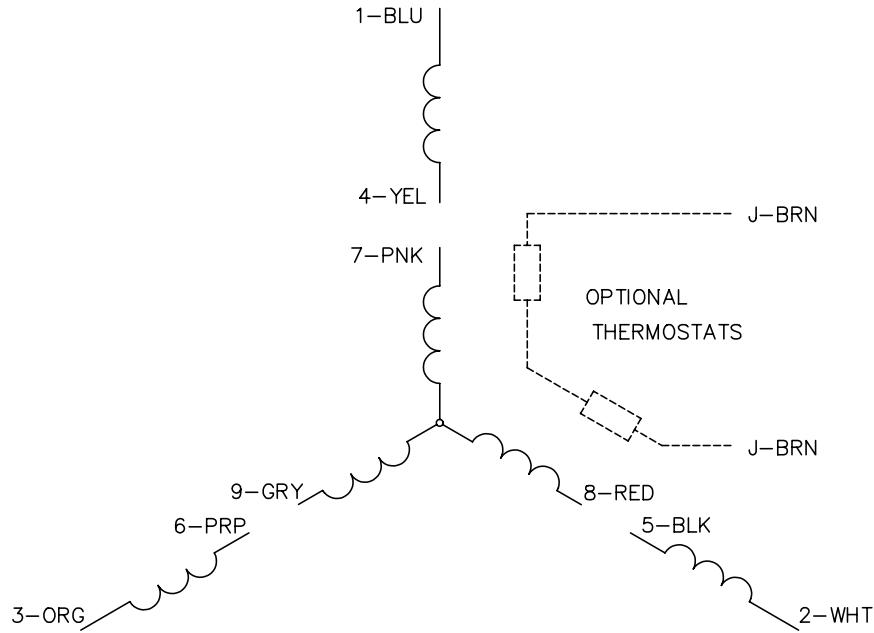
% of Rated Load	25	50	75	100	125	150	S.F.
Power Factor	39	57	68	76	81	84	79
Efficiency	70.7	79.6	81.8	82.3	81.7	80.6	81.9
Speed	3564	3533	3501	3466	3429	3394	3444
Line amperes	1.5	1.7	2	2.3	2.7	3	2.54

Performance Graph at 460V, 60Hz, 1.5HP Typical performance - Not guaranteed values

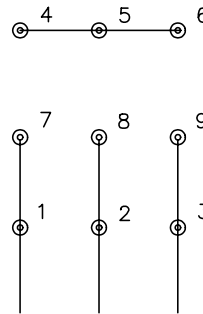




CD0005

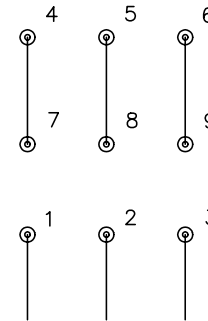


LOW VOLTAGE  
(2Y)



LINE

HIGH VOLTAGE  
(1Y)



LINE

NOTES:

1. INTERCHANGE ANY TWO LINE LEADS TO REVERSE ROTATION.
2. OPTIONAL THERMOSTATS ARE PROVIDED WHEN SPECIFIED.
3. ACTUAL NUMBER OF INTERNAL PARALLEL CIRCUITS MAY BE A MULTIPLE OF THOSE SHOWN ABOVE.
4. LEAD COLORS ARE OPTIONAL. LEADS MUST ALWAYS BE NUMBERED AS SHOWN.

REV. DESC: REVISE TO SHOW OPTIONAL COLORS			
REV. LTR: E	BY: JLP	REVISED: 01/19/99 10:15	TDR: 0171435
900000		FILE: AAA00005140	MDL: -
		MTL: -	

**BALDOR ELECTRIC Co.**

3PH, DV, 9 LEADS

CD0005