

BALDOR® • ***RELIANCE***

Product Information Packet

CBM3615T

5HP, 1745RPM, 3PH, 60HZ, 184TC, 3634M, TEFC, F1

| Part Detail | | | | | | | |
|-------------|--------|-------------|------------|-------------|--------|---------------|------------|
| Revision: | D | Status: | INA/A | Change #: | | Proprietary: | No |
| Type: | AC | Elec. Spec: | 36WGS543 | CD Diagram: | CD0005 | Mfg Plant: | |
| Mech. Spec: | 36E047 | Layout: | 36LYE047 | Poles: | 04 | Created Date: | 04-18-2012 |
| Base: | RG | Eff. Date: | 03-08-2016 | Leads: | 9#16 | | |

| Specs | | | |
|---------------------------------|-------------------------|--------------------------------|-----------------|
| Catalog Number: | CBM3615T | Insulation Class: | F |
| Enclosure: | TEFC | Inverter Code: | Not Inverter |
| Frame: | 184TC | KVA Code: | J |
| Frame Material: | Steel | Lifting Lugs: | No Lifting Lugs |
| Output @ Frequency: | 5.000 HP @ 60 HZ | Locked Bearing Indicator: | Locked Bearing |
| Synchronous Speed @ Frequency: | 1800 RPM @ 60 HZ | Motor Lead Quantity/Wire Size: | 9 @ 16 AWG |
| Voltage @ Frequency: | 460.0 V @ 60 HZ | Motor Lead Exit: | Ko Box |
| | 230.0 V @ 60 HZ | Motor Lead Termination: | Flying Leads |
| | 208.0 V @ 60 HZ | Motor Type: | 3634M |
| XP Division: | Not Applicable | Mounting Arrangement: | F1 |
| Agency Approvals: | CSA | Power Factor: | 78 |
| | UR | Product Family: | General Purpose |
| Auxillary Box: | No Auxillary Box | Product Type: | BRAKE MOTOR |
| Auxillary Box Lead Termination: | None | Pulley End Bearing Type: | Ball |
| Base Indicator: | RG | Pulley Face Code: | C-Face |
| Bearing Grease Type: | Polyrex EM (-20F +300F) | Pulley Shaft Indicator: | Standard |
| Blower: | None | Rodent Screen: | None |
| Current @ Voltage: | 13.600 A @ 230.0 V | Shaft Extension Location: | Pulley End |

| | | | |
|---------------------------------------|---------------------------|------------------------------------|---------------------|
| | 14.200 A @ 208.0 V | Shaft Ground Indicator: | No Shaft Grounding |
| | 6.800 A @ 460.0 V | Shaft Rotation: | Reversible |
| Design Code: | A | Shaft Slinger Indicator: | No Slinger |
| Drip Cover: | No Drip Cover | Speed Code: | Single Speed |
| Duty Rating: | CONT | Motor Standards: | NEMA |
| Electrically Isolated Bearing: | Not Electrically Isolated | Starting Method: | Direct on line |
| Feedback Device: | NO FEEDBACK | Thermal Device - Bearing: | None |
| Front Face Code: | Brake Mounting | Thermal Device - Winding: | None |
| Front Shaft Indicator: | None | Vibration Sensor Indicator: | No Vibration Sensor |
| Heater Indicator: | No Heater | Winding Thermal 1: | None |
| | | Winding Thermal 2: | None |

| Nameplate NP1256L | | | | | | | | | | |
|-------------------|----------------|--|------|----|-----|------|--|-------|----|---|
| CAT.NO. | CBM3615T | | | | | | | | | |
| SPEC. | 36E047S543G1 | | | | | | | | | |
| HP | 5 | | | | | | | | | |
| VOLTS | 208-230/460 | | | | | | | | | |
| AMP | 14.2-13.6/6.8 | | | | | | | | | |
| RPM | 1745 | | | | | | | | | |
| FRAME | 184TC | | | | HZ | 60 | | | PH | 3 |
| SER.F. | 1.15 | | CODE | J | DES | A | | CLASS | F | |
| NEMA-NOM-EFF | 87.5 | | PF | 78 | | | | | | |
| RATING | 40C AMB-CONT | | | | | | | | | |
| CC | USABLE AT 208V | | | | | | | | | |
| DE | 6206 | | | | ODE | 6205 | | | | |
| ENCL | TEFC | | | SN | | | | | | |

AC Induction Motor Performance Data

Record # 32154 - Typical performance - not guaranteed values

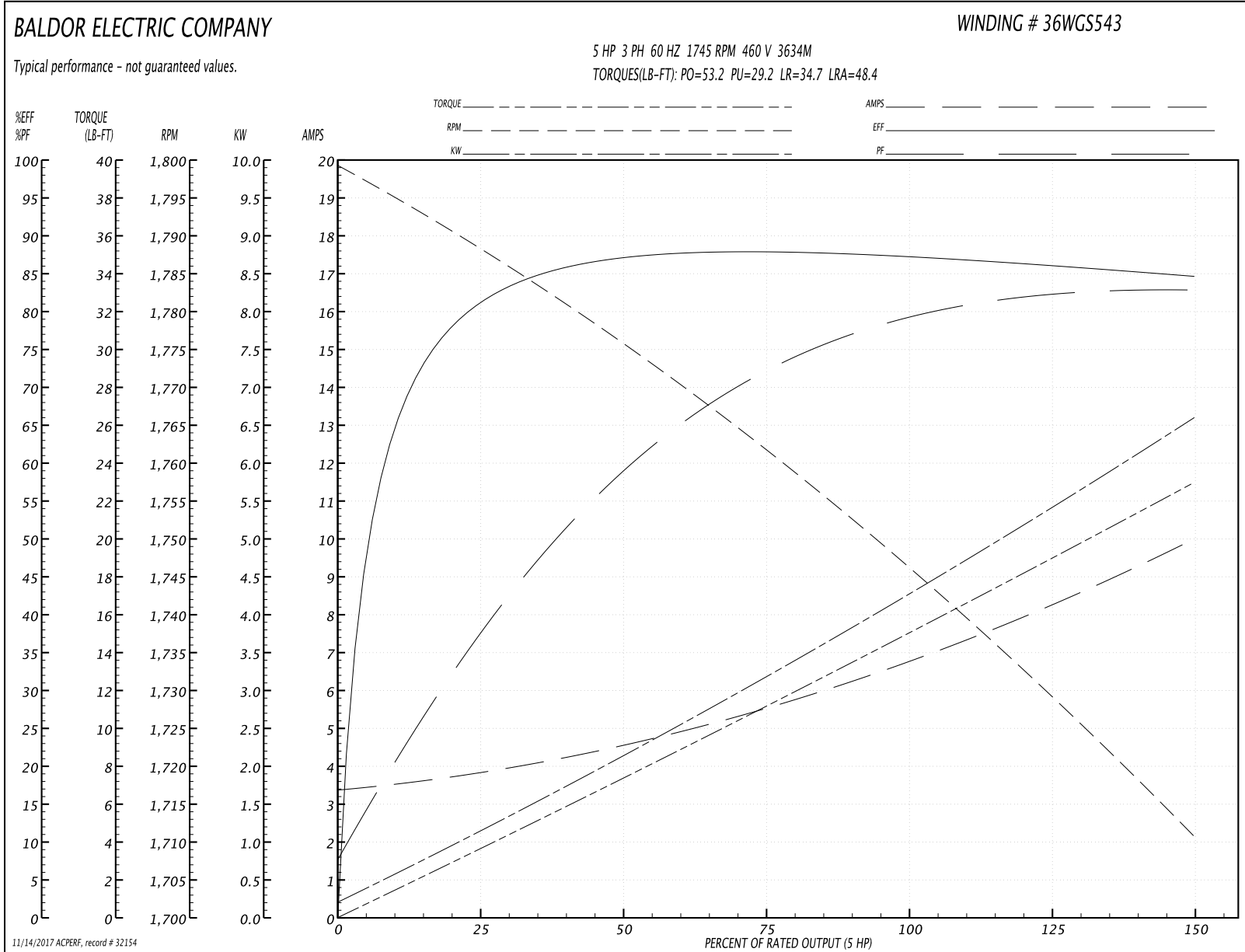
| | | |
|-------------------------------|--------------------|------------------------|
| Winding: 36WGS543-R001 | Type: 3634M | Enclosure: TEFC |
|-------------------------------|--------------------|------------------------|

| Nameplate Data | | | | 460 V, 60 Hz: High Voltage Connection | |
|-----------------------|---------------|--------------|----|--|--------------------------|
| Rated Output (HP) | 5 | | | Full Load Torque | 15 LB-FT |
| Volts | 208-230/460 | | | Start Configuration | direct on line |
| Full Load Amps | 14.2-13.6/6.8 | | | Breakdown Torque | 53.2 LB-FT |
| R.P.M. | 1745 | | | Pull-up Torque | 29.2 LB-FT |
| Hz | 60 | Phase | 3 | Locked-rotor Torque | 34.7 LB-FT |
| NEMA Design Code | A | KVA Code | J | Starting Current | 48.4 A |
| Service Factor (S.F.) | 1.15 | | | No-load Current | 3.42 A |
| NEMA Nom. Eff. | 87.5 | Power Factor | 78 | Line-line Res. @ 25°C | 2.6196 Ω |
| Rating - Duty | 40C AMB-CONT | | | Temp. Rise @ Rated Load | 78°C |
| S.F. Amps | | | | Temp. Rise @ S.F. Load | 96°C |
| | | | | Locked-rotor Power Factor | 42 |
| | | | | Rotor inertia | 0.317 LB-FT ² |

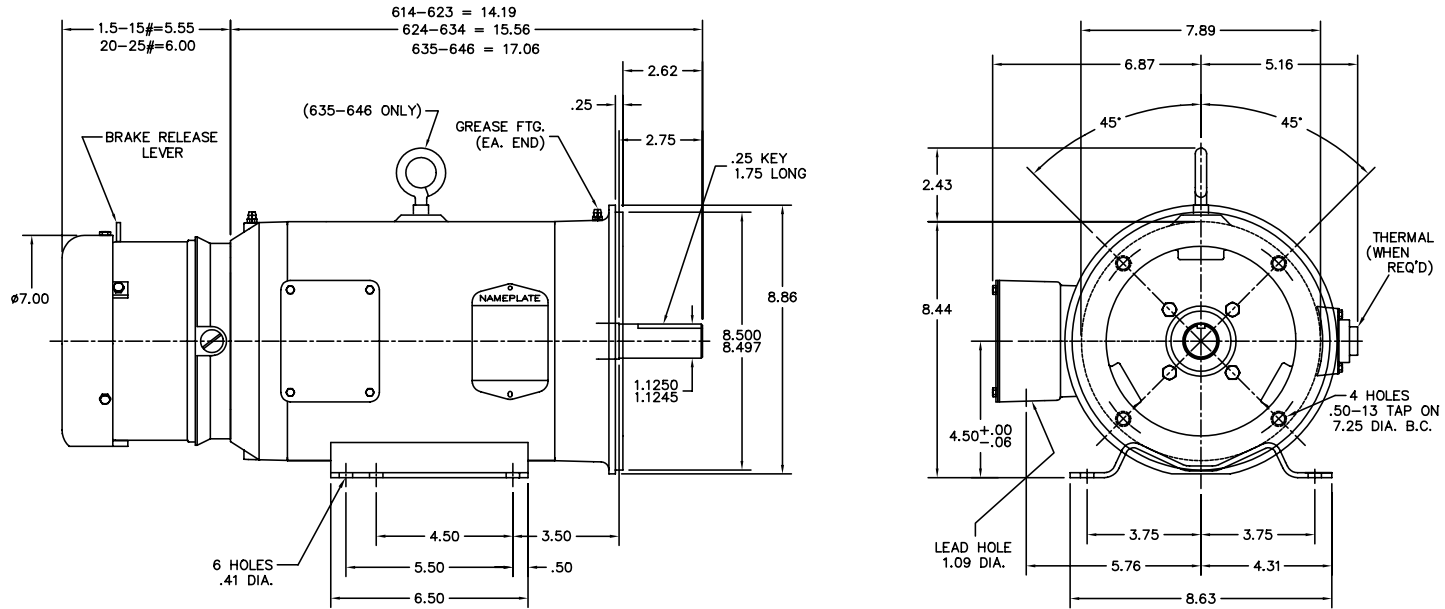
Load Characteristics 460 V, 60 Hz, 5 HP

| % of Rated Load | 25 | 50 | 75 | 100 | 125 | 150 | S.F. |
|-----------------|--------|--------|--------|--------|--------|--------|------|
| Power Factor | 38 | 59 | 72 | 78 | 82 | 83 | 80 |
| Efficiency | 80.9 | 87.1 | 88.3 | 87.8 | 86.6 | 84.7 | 87.1 |
| Speed | 1788.2 | 1775.7 | 1761.9 | 1747.1 | 1729.5 | 1710.5 | 1737 |
| Line amperes | 3.77 | 4.5 | 5.5 | 6.83 | 8.24 | 9.97 | 7.68 |

Performance Graph at 460V, 60Hz, 5.0HP Typical performance - Not guaranteed values



36LYE047



CUSTOMER IS RESPONSIBLE FOR DETERMINING THAT MOTOR PERFORMANCE IS SUITABLE IN THE APPLICATION.

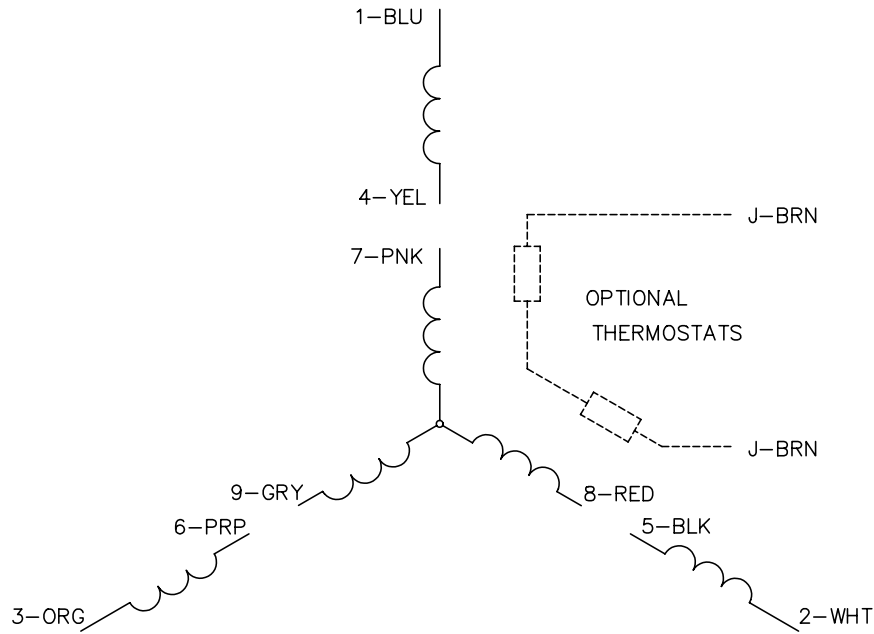
| | |
|------------|--|
| REV. DESC: | 36EP3306A04 WAS 36EP1303A49 |
| REV. LTR: | L BY: JMB REVISED: 08/04/00 10:46 TDR: 0214694 |
| FILE: | AAA00003641 REF: - |
| MTL: | - |

BALDOR ELECTRIC Co.

STD HORZ 182-4TC TEFC 36M W/ BRAKE

36LYE047

CD0005

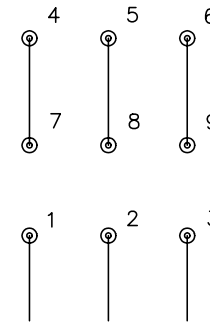


LOW VOLTAGE
(2Y)



LINE

HIGH VOLTAGE
(1Y)



LINE

NOTES:

1. INTERCHANGE ANY TWO LINE LEADS TO REVERSE ROTATION.
2. OPTIONAL THERMOSTATS ARE PROVIDED WHEN SPECIFIED.
3. ACTUAL NUMBER OF INTERNAL PARALLEL CIRCUITS MAY BE A MULTIPLE OF THOSE SHOWN ABOVE.
4. LEAD COLORS ARE OPTIONAL. LEADS MUST ALWAYS BE NUMBERED AS SHOWN.

| | | | |
|---|---------|-------------------------|--------------|
| REV. DESC: REVISE TO SHOW OPTIONAL COLORS | | | |
| REV. LTR: E | BY: JLP | REVISED: 01/19/99 10:15 | TDR: 0171435 |
| 900000 | | FILE: AAA00005140 | MDL: - |
| | | MTL: - | |

BALDOR ELECTRIC Co.

3PH, DV, 9 LEADS

CD0005