

# **BALDOR**® • ***RELIANCE***

## **Product Information Packet**

# **RM3108A**

**.5 AIR OVERHP,1725RPM,3PH,60HZ,56,3413M**

Part Detail							
Revision:	E	Status:	PRD/A	Change #:		Proprietary:	No
Type:	AC	Elec. Spec:	34WGR030	CD Diagram:	CD0007	Mfg Plant:	
Mech. Spec:	34K019	Layout:	34LYK019	Poles:	04	Created Date:	04-05-2013
Base:	RS	Eff. Date:	01-26-2017	Leads:	12#18		

Specs			
Catalog Number:	RM3108A	Inverter Code:	Not Inverter
Enclosure:	OPEN	KVA Code:	J
Frame:	56	Lifting Lugs:	No Lifting Lugs
Frame Material:	Steel	Locked Bearing Indicator:	No Locked Bearing
Output @ Frequency:	.500 HP @ 60 HZ	Motor Lead Quantity/Wire Size:	12 @ 18 AWG
Synchronous Speed @ Frequency:	1800 RPM @ 60 HZ	Motor Lead Exit:	Terminal Panel
Voltage @ Frequency:	460.0 V @ 60 HZ	Motor Lead Termination:	Flying Leads
	230.0 V @ 60 HZ	Motor Type:	3413M
XP Class and Group:	None	Mounting Arrangement:	F1
XP Division:	Not Applicable	Power Factor:	68
Agency Approvals:	CSA	Product Family:	General Purpose
	UR	Pulley End Bearing Type:	Ball
Auxillary Box:	No Auxillary Box	Pulley Face Code:	Resilient Mount
Auxillary Box Lead Termination:	None	Pulley Shaft Indicator:	Standard
Base Indicator:	Resilient	Rodent Screen:	None
Bearing Grease Type:	Polyrex EM (-20F +300F)	RoHS Status:	ROHS COMPLIANT
Blower:	None	Shaft Extension Location:	Pulley End
Current @ Voltage:	.900 A @ 460.0 V	Shaft Ground Indicator:	No Shaft Grounding

	1.800 A @ 230.0 V	<b>Shaft Rotation:</b>	Reversible
	2.300 A @ 208.0 V	<b>Shaft Slinger Indicator:</b>	No Slinger
<b>Design Code:</b>	B	<b>Speed Code:</b>	Single Speed
<b>Drip Cover:</b>	No Drip Cover	<b>Motor Standards:</b>	NEMA
<b>Duty Rating:</b>	CONT	<b>Starting Method:</b>	Direct on line
<b>Electrically Isolated Bearing:</b>	Not Electrically Isolated	<b>Thermal Device - Bearing:</b>	None
<b>Feedback Device:</b>	NO FEEDBACK	<b>Thermal Device - Winding:</b>	None
<b>Front Face Code:</b>	Resilient Mount	<b>Vibration Sensor Indicator:</b>	No Vibration Sensor
<b>Front Shaft Indicator:</b>	None	<b>Winding Thermal 1:</b>	Automatic Thermal Overload
<b>Heater Indicator:</b>	No Heater	<b>Winding Thermal 1 Location:</b>	SB
<b>Insulation Class:</b>	B	<b>Winding Thermal 2:</b>	None

Nameplate NP1257L	
CAT.NO.	RM3108A
SPEC.	34K019R030G1
HP	.5 AIR OVER
VOLTS	230/460
AMP	1.8/.9
RPM	1725
FRAME	56
SER.F.	1.25
NEMA-NOM-EFF	72
RATING	40C AMB-CONT
CC	USABLE AT 208V 2.3
DE	6203
ENCL	OPEN
	SFA 2/1

CODE	J	DES	B	CL	B	PH	3
PF	68						
HZ	60						
ODE	6203						
SN							

**AC Induction Motor Performance Data**

Record # 41850 - Typical performance - not guaranteed values

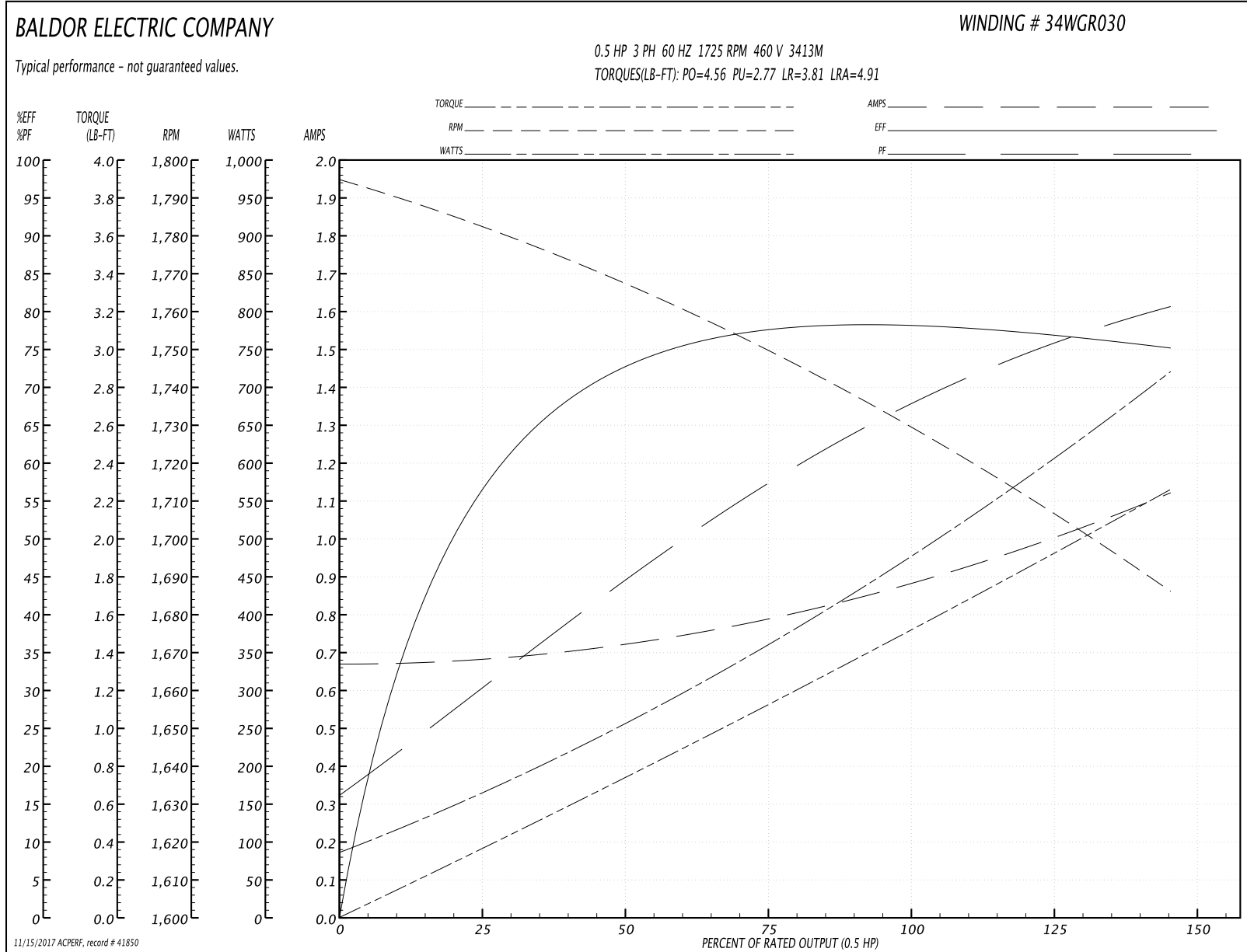
<b>Winding:</b> 34WGR030-R001	<b>Type:</b> 3413M	<b>Enclosure:</b> OPAO
-------------------------------	--------------------	------------------------

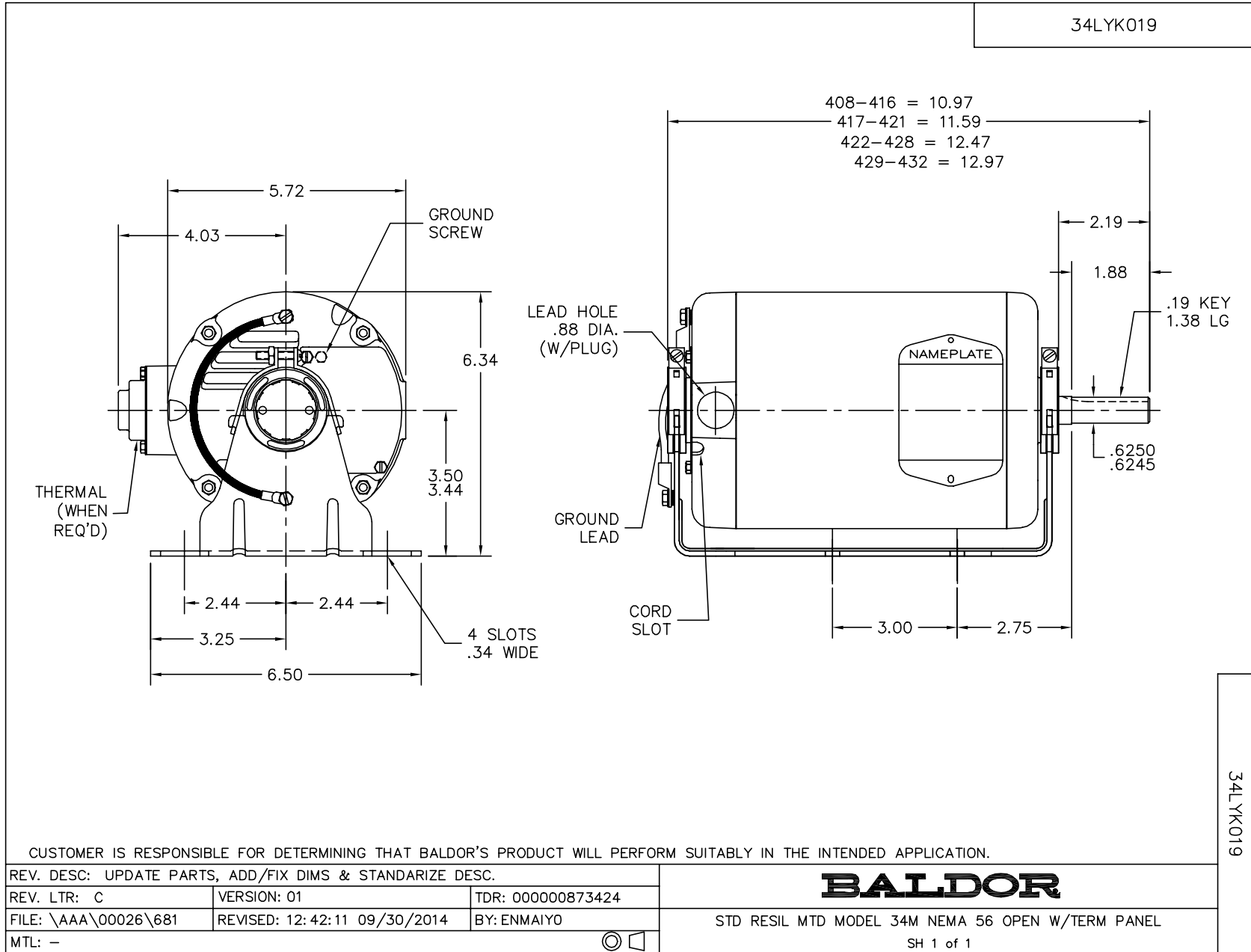
Nameplate Data				460 V, 60 Hz: High Voltage Connection	
Rated Output (HP)	.5			Full Load Torque	1.51 LB-FT
Volts	230/460			Start Configuration	direct on line
Full Load Amps	1.8/9			Breakdown Torque	4.56 LB-FT
R.P.M.	1725			Pull-up Torque	2.77 LB-FT
Hz	60	Phase	3	Locked-rotor Torque	3.81 LB-FT
NEMA Design Code	B	KVA Code	J	Starting Current	4.91 A
Service Factor (S.F.)	1.25			No-load Current	0.669 A
NEMA Nom. Eff.	72	Power Factor	68	Line-line Res. @ 25°C	48.65 Ω
Rating - Duty	40C AMB-CONT			Temp. Rise @ Rated Load	
S.F. Amps	2/1			Temp. Rise @ S.F. Load	
				Locked-rotor Power Factor	69
				Rotor inertia	0.031 LB-FT <sup>2</sup>

Load Characteristics 460 V, 60 Hz, 0.5 HP

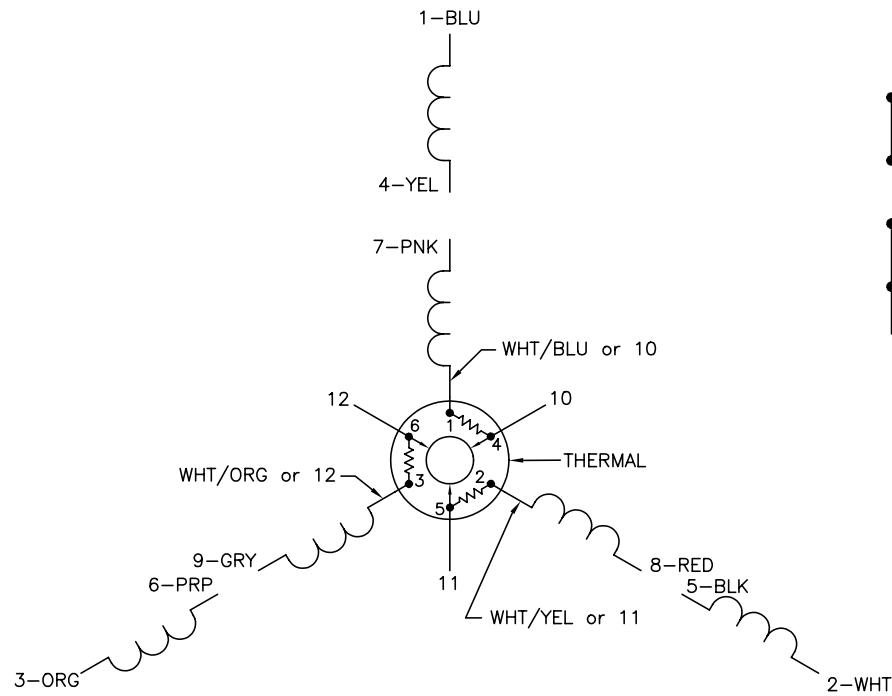
% of Rated Load	25	50	75	100	125	150	S.F.
Power Factor	31	46	58	68	74	79	74
Efficiency	55.9	74.4	77.4	77.4	77.8	75	77.8
Speed	1782	1767	1749	1729	1711	1685	1711
Line amperes	0.684	0.723	0.79	0.886	0.983	1.126	0.983

Performance Graph at 460V, 60Hz, 0.5HP Typical performance - Not guaranteed values

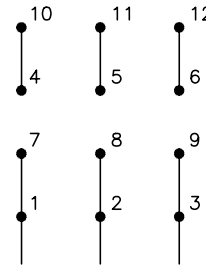




CD0007

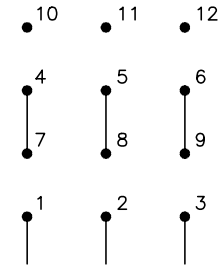


LOW VOLTAGE  
(2Y)



LINE

HIGH VOLTAGE  
(1Y)



LINE

NOTES:

1. INTERCHANGE ANY TWO LINE LEADS TO REVERSE ROTATION.
2. ACTUAL NUMBER OF INTERNAL PARALLEL CIRCUITS MAY VARY.
3. LEAD COLORS ARE OPTIONAL. LEADS MUST ALWAYS BE NUMBERED AS SHOWN.

REV. DESC: ADDED "CK" PLANT CODE			
REV. LTR: E	BY: EAH	REVISED: 05/06/99 17:1	TDR: 0181040
L00000		FILE: AAA00008370	MDL: -
		MTL: -	

**BALDOR ELECTRIC Co.**

3PH, DV, THERMAL, 12 LEADS

CD0007