

BALDOR® • **RELIANCE**

Product Information Packet

AOM3556T

1HP,1155RPM,3PH,60HZ,145T,3520M,TEAO,F1

Part Detail							
Revision:	H	Status:	PRD/A	Change #:		Proprietary:	No
Type:	AC	Elec. Spec:	35WGN025	CD Diagram:	CD0005	Mfg Plant:	
Mech. Spec:	35K695	Layout:	35LYK695	Poles:	06	Created Date:	06-02-2011
Base:	RG	Eff. Date:	01-19-2017	Leads:	9#18 36" LG		Y

Specs			
Catalog Number:	AOM3556T	Heater Indicator:	No Heater
Enclosure:	TEAO	Insulation Class:	F
Frame:	145T	Inverter Code:	Not Inverter
Frame Material:	Steel	KVA Code:	K
Output @ Frequency:	1.000 HP @ 60 HZ	Lifting Lugs:	No Lifting Lugs
Synchronous Speed @ Frequency:	1200 RPM @ 60 HZ	Locked Bearing Indicator:	Locked Bearing
Voltage @ Frequency:	208.0 V @ 60 HZ	Motor Lead Quantity/Wire Size:	9 @ 18 AWG
	230.0 V @ 60 HZ	Motor Lead Exit:	Ko Box
	460.0 V @ 60 HZ	Motor Lead Termination:	Flying Leads
XP Class and Group:	None	Motor Type:	3520M
XP Division:	Not Applicable	Mounting Arrangement:	F1
Agency Approvals:	UR	Power Factor:	63
	CSA	Product Family:	General Purpose
Auxillary Box:	No Auxillary Box	Pulley End Bearing Type:	Ball
Auxillary Box Lead Termination:	None	Pulley Face Code:	Standard
Base Indicator:	Rigid	Pulley Shaft Indicator:	Standard
Bearing Grease Type:	Polyrex EM (-20F +300F)	Rodent Screen:	None
Blower:	None	Shaft Extension Location:	Pulley End

Current @ Voltage:	1.900 A @ 460.0 V	Shaft Ground Indicator:	No Shaft Grounding
	3.800 A @ 208.0 V	Shaft Rotation:	Reversible
	3.800 A @ 230.0 V	Shaft Slinger Indicator:	No Slinger
Design Code:	B	Speed Code:	Single Speed
Drip Cover:	No Drip Cover	Motor Standards:	NEMA
Duty Rating:	CONT	Starting Method:	Direct on line
Electrically Isolated Bearing:	Not Electrically Isolated	Thermal Device - Bearing:	None
Feedback Device:	NO FEEDBACK	Thermal Device - Winding:	None
Front Face Code:	Standard	Vibration Sensor Indicator:	No Vibration Sensor
Front Shaft Indicator:	None	Winding Thermal 1:	None
		Winding Thermal 2:	None

Nameplate NP1256L										
CAT.NO.	AOM3556T									
SPEC.	35K695N025G1									
HP	1									
VOLTS	208-230/460									
AMP	3.8/1.9									
RPM	1155									
FRAME	145T				HZ	60			PH	3
SER.F.	1.00		CODE	K	DES	B		CLASS	F	
NEMA-NOM-EFF	78.5		PF	63						
RATING	40C AMB-CONT									
CC									USABLE AT 208V	
DE	6205				ODE	6203				
ENCL	TEAO		SN							
	1125 FPM AT 66 CFM									

AC Induction Motor Performance Data

Record # 61271 - Typical performance - not guaranteed values

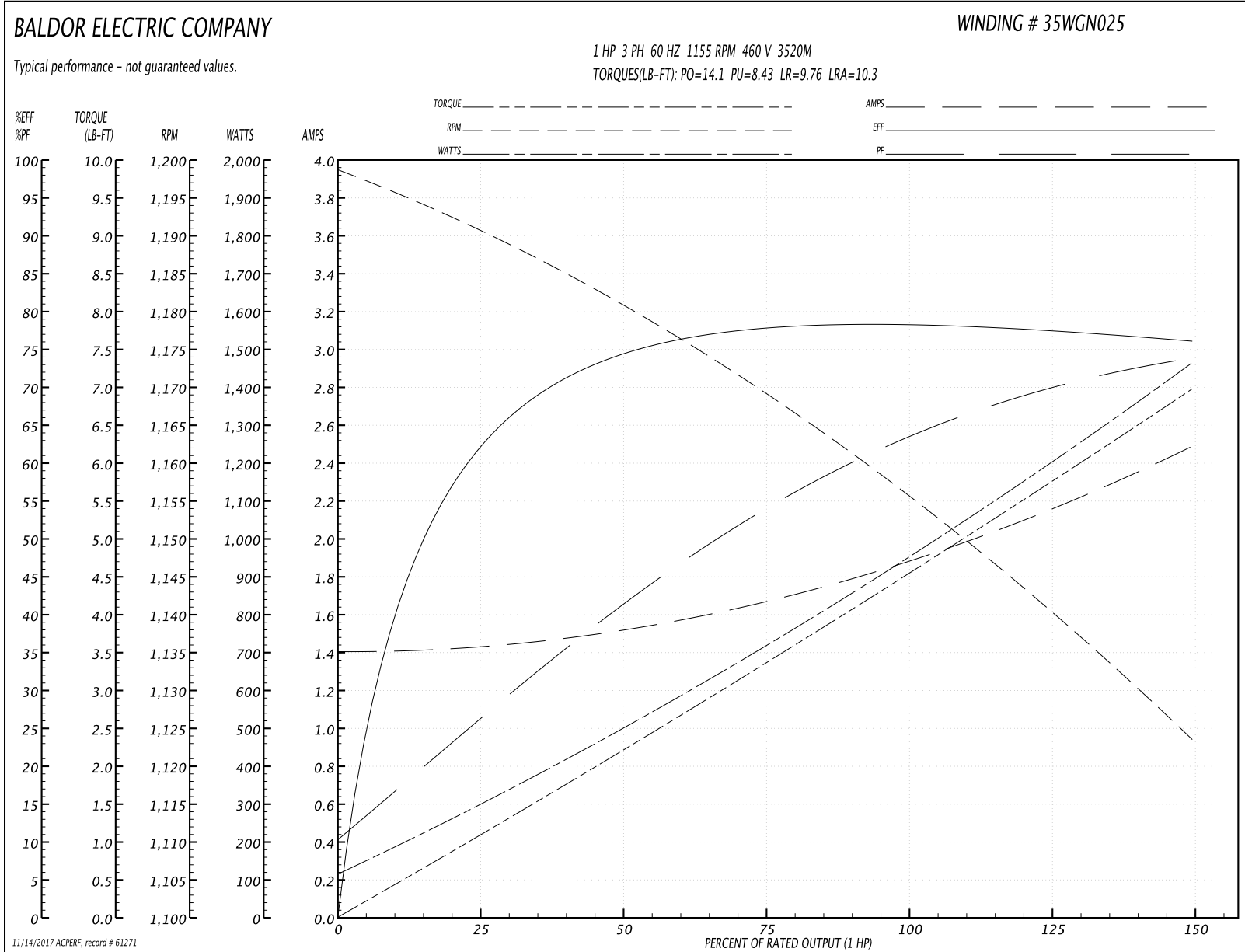
Winding: 35WGN025-R017	Type: 3520M	Enclosure: TEAO
-------------------------------	--------------------	------------------------

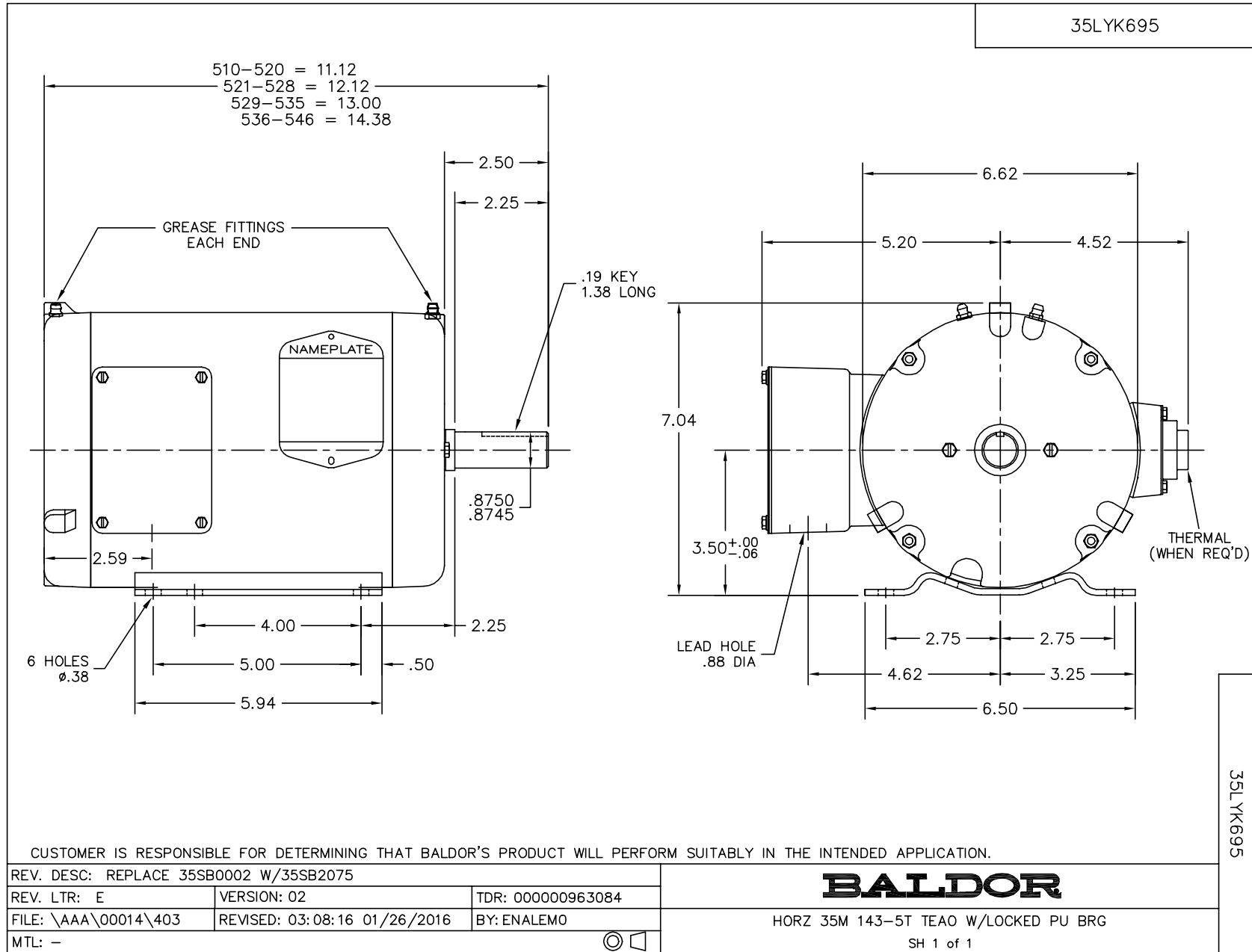
Nameplate Data				460 V, 60 Hz: High Voltage Connection	
Rated Output (HP)	1			Full Load Torque	4.52 LB-FT
Volts	208-230/460			Start Configuration	direct on line
Full Load Amps	3.8/1.9			Breakdown Torque	14.1 LB-FT
R.P.M.	1155			Pull-up Torque	8.43 LB-FT
Hz	60	Phase	3	Locked-rotor Torque	9.76 LB-FT
NEMA Design Code	B	KVA Code	K	Starting Current	10.3 A
Service Factor (S.F.)	1			No-load Current	1.41 A
NEMA Nom. Eff.	78.5	Power Factor	63	Line-line Res. @ 25°C	19.8 Ω
Rating - Duty	40C AMB-CONT			Temp. Rise @ Rated Load	67°C
S.F. Amps				Temp. Rise @ S.F. Load	78°C
				Locked-rotor Power Factor	49
				Rotor inertia	0.119 LB-FT ²

Load Characteristics 460 V, 60 Hz, 1 HP

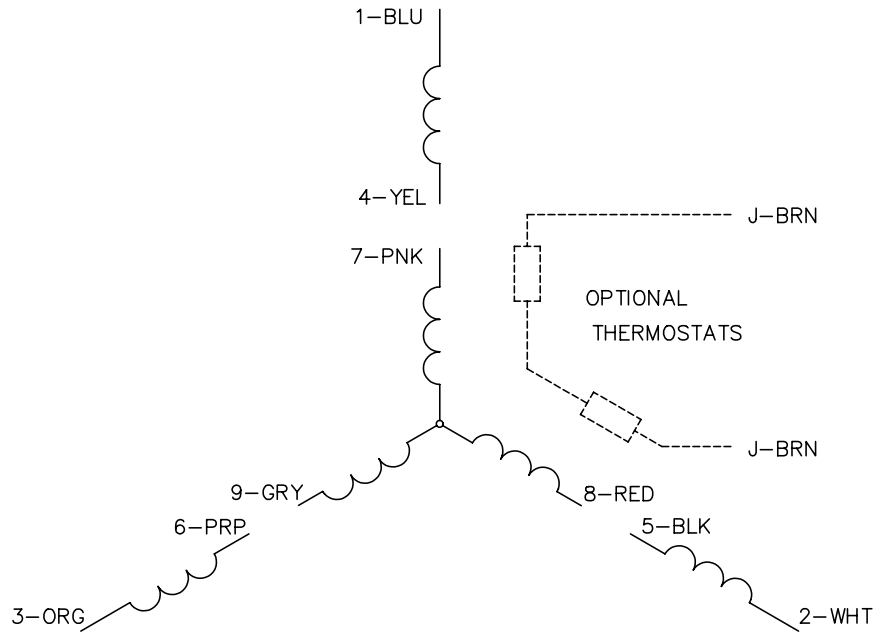
% of Rated Load	25	50	75	100	125	150
Power Factor	27	42	54	63	70	74
Efficiency	61.5	73.7	77.7	78.6	77.9	75.9
Speed	1191	1180	1169	1157	1141	1123
Line amperes	1.42	1.52	1.67	1.88	2.15	2.49

Performance Graph at 460V, 60Hz, 1.0HP Typical performance - Not guaranteed values

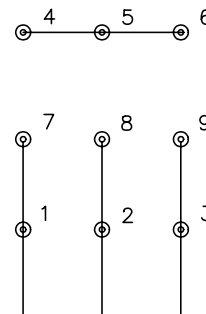




CD0005

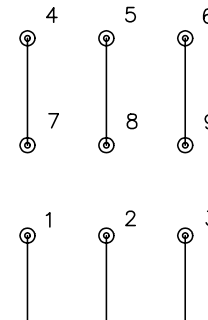


LOW VOLTAGE
(2Y)



LINE

HIGH VOLTAGE
(1Y)



LINE

NOTES:

1. INTERCHANGE ANY TWO LINE LEADS TO REVERSE ROTATION.
2. OPTIONAL THERMOSTATS ARE PROVIDED WHEN SPECIFIED.
3. ACTUAL NUMBER OF INTERNAL PARALLEL CIRCUITS MAY BE A MULTIPLE OF THOSE SHOWN ABOVE.
4. LEAD COLORS ARE OPTIONAL. LEADS MUST ALWAYS BE NUMBERED AS SHOWN.

REV. DESC: REVISE TO SHOW OPTIONAL COLORS			
REV. LTR: E	BY: JLP	REVISED: 01/19/99 10:15	TDR: 0171435
9000D		FILE: AAA00005140	MDL: -
		MTL: -	

BALDOR ELECTRIC Co.

3PH, DV, 9 LEADS

CD0005