

# **BALDOR® • RELIANCE**

## **Product Information Packet**

### **L1307-50**

**.75HP, 1425RPM, 1PH, 50HZ, 56, 3524L, OPEN, F1**

Part Detail							
Revision:	AL	Status:	PRD/A	Change #:		Proprietary:	No
Type:	AC	Elec. Spec:	35WGY978	CD Diagram:	CD0001	Mfg Plant:	
Mech. Spec:	35D011	Layout:	35LYD011	Poles:	04	Created Date:	
Base:	RG	Eff. Date:	08-21-2017	Leads:	6#18		

Specs			
Catalog Number:	L1307-50	Insulation Class:	F
Enclosure:	OPEN	Inverter Code:	Not Inverter
Frame:	56	KVA Code:	J
Frame Material:	Steel	Lifting Lugs:	No Lifting Lugs
Output @ Frequency:	.750 HP @ 50 HZ	Locked Bearing Indicator:	No Locked Bearing
Synchronous Speed @ Frequency:	1500 RPM @ 50 HZ	Motor Lead Quantity/Wire Size:	6 @ 18 AWG
Voltage @ Frequency:	220.0 V @ 50 HZ	Motor Lead Exit:	Ko Box
	110.0 V @ 50 HZ	Motor Lead Termination:	Flying Leads
XP Class and Group:	None	Motor Type:	3524L
XP Division:	Not Applicable	Mounting Arrangement:	F1
Agency Approvals:	CE	Power Factor:	76
	CSA	Product Family:	General Purpose
	UR	Pulley End Bearing Type:	Ball
Auxillary Box:	No Auxillary Box	Pulley Face Code:	Standard
Auxillary Box Lead Termination:	None	Pulley Shaft Indicator:	Standard
Base Indicator:	Rigid	Rodent Screen:	None
Bearing Grease Type:	Polyrex EM (-20F +300F)	RoHS Status:	ROHS COMPLIANT
Blower:	None	Shaft Extension Location:	Pulley End

<b>Current @ Voltage:</b>	10.000 A @ 110.0 V	<b>Shaft Ground Indicator:</b>	No Shaft Grounding
	5.000 A @ 220.0 V	<b>Shaft Rotation:</b>	Reversible
<b>Design Code:</b>	N	<b>Shaft Slinger Indicator:</b>	No Slinger
<b>Drip Cover:</b>	No Drip Cover	<b>Speed Code:</b>	Single Speed
<b>Duty Rating:</b>	CONT	<b>Motor Standards:</b>	NEMA
<b>Electrically Isolated Bearing:</b>	Not Electrically Isolated	<b>Starting Method:</b>	Direct on line
<b>Feedback Device:</b>	NO FEEDBACK	<b>Thermal Device - Bearing:</b>	None
<b>Front Face Code:</b>	Standard	<b>Thermal Device - Winding:</b>	None
<b>Front Shaft Indicator:</b>	None	<b>Vibration Sensor Indicator:</b>	No Vibration Sensor
<b>Heater Indicator:</b>	No Heater	<b>Winding Thermal 1:</b>	None
		<b>Winding Thermal 2:</b>	None

Nameplate NP1372L										
CAT.NO.	L1307-50									
SPEC.	35D11Y978									
HP	.75									
VOLTS	110/220									
AMP	10/5									
RPM	1425 IP23									
FRAME	56					HZ	50		PH	1
SER.F.	1.25					CODE	J		DES	N
NEMA-NOM-EFF	66					PF	76		CL	F
RATING	40C AMB-CONT									
CC									USABLE AT 208V	
DE	6205					ODE	6203			
ENCL	OPEN					SN				
	SFA 12/6									

**AC Induction Motor Performance Data**  
Record # 61606 - Typical performance - not guaranteed values

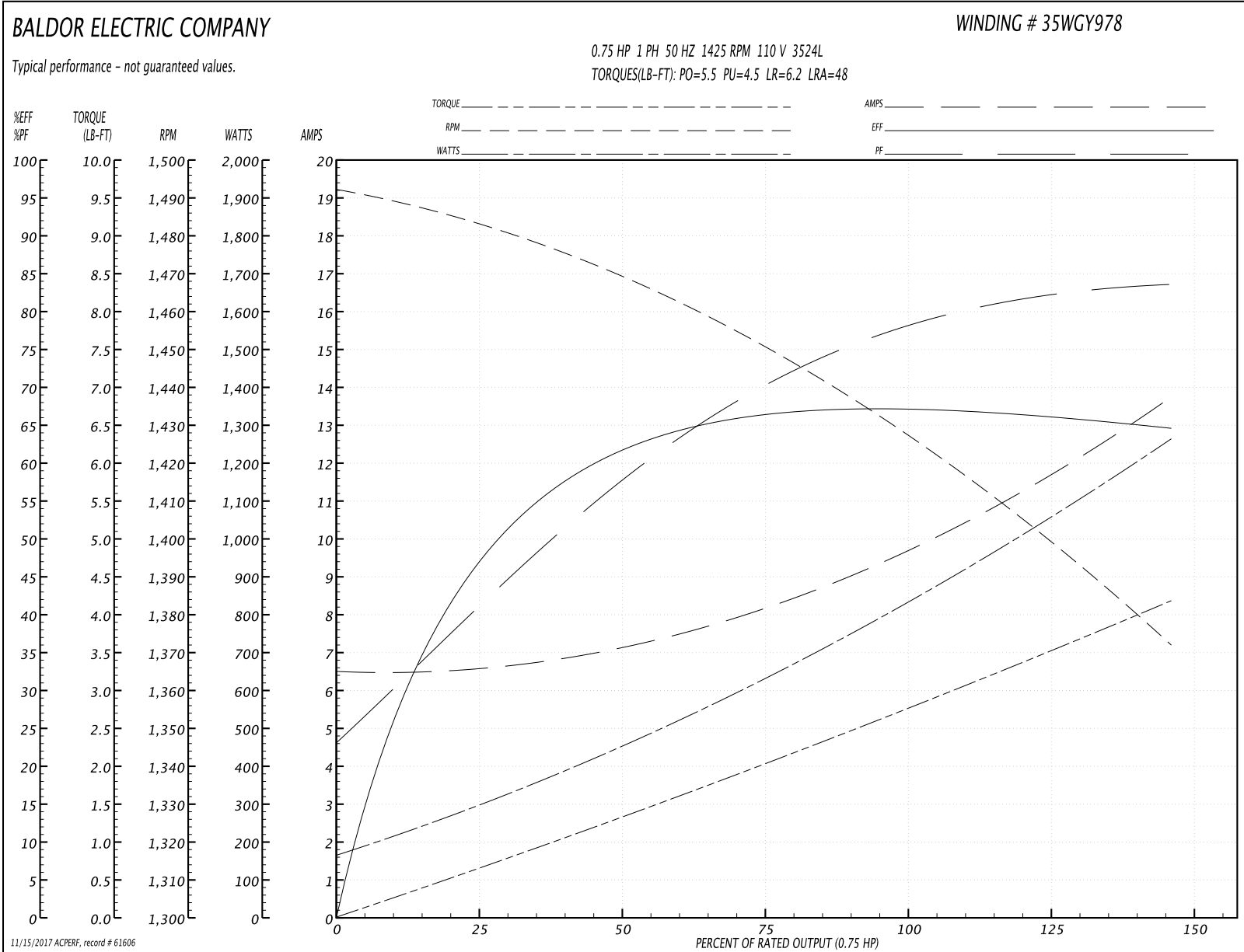
<b>Winding:</b> 35WGY978-R014	<b>Type:</b> 3524L	<b>Enclosure:</b> OPEN
-------------------------------	--------------------	------------------------

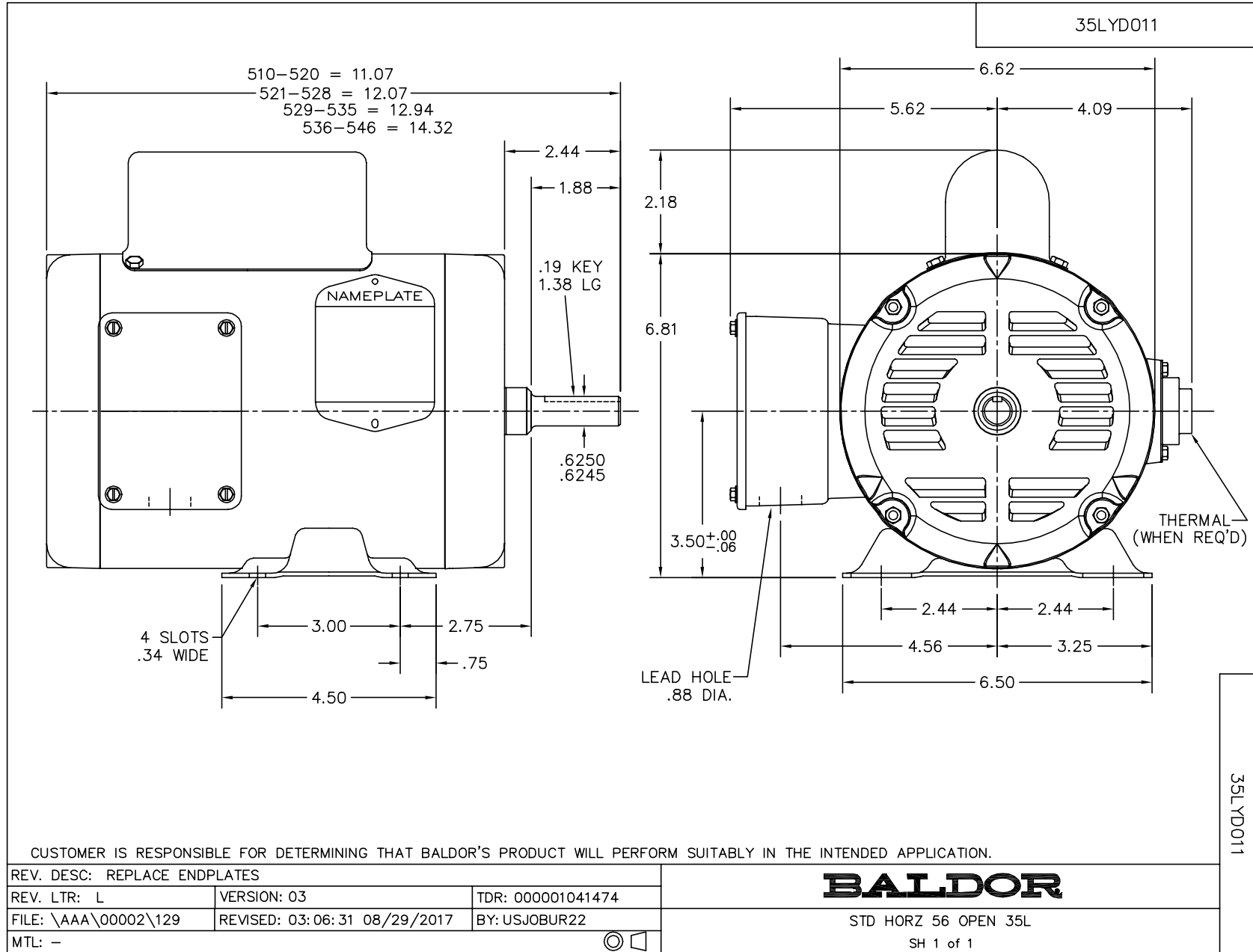
Nameplate Data				110 V, 50 Hz: Low Voltage Connection	
Rated Output (HP)	.75			Full Load Torque	2.8 LB-FT
Volts	110/220			Start Configuration	direct on line
Full Load Amps	10/5			Breakdown Torque	5.5 LB-FT
R.P.M.	1425			Pull-up Torque	4.5 LB-FT
Hz	50	Phase	1	Locked-rotor Torque	6.2 LB-FT
NEMA Design Code	N	KVA Code	J	Starting Current	48 A
Service Factor (S.F.)	1.25			No-load Current	6.4 A
NEMA Nom. Eff.	66	Power Factor	76	Line-line Res. @ 25°C	0.913 Ω A Ph 2.32 Ω B Ph
Rating - Duty	40C AMB-CONT			Temp. Rise @ Rated Load	49°C
S.F. Amps	12/6			Temp. Rise @ S.F. Load	64°C
				Locked-rotor Power Factor	95.1
				Rotor inertia	0.142 LB-FT <sup>2</sup>

Load Characteristics 110 V, 50 Hz, 0.75 HP

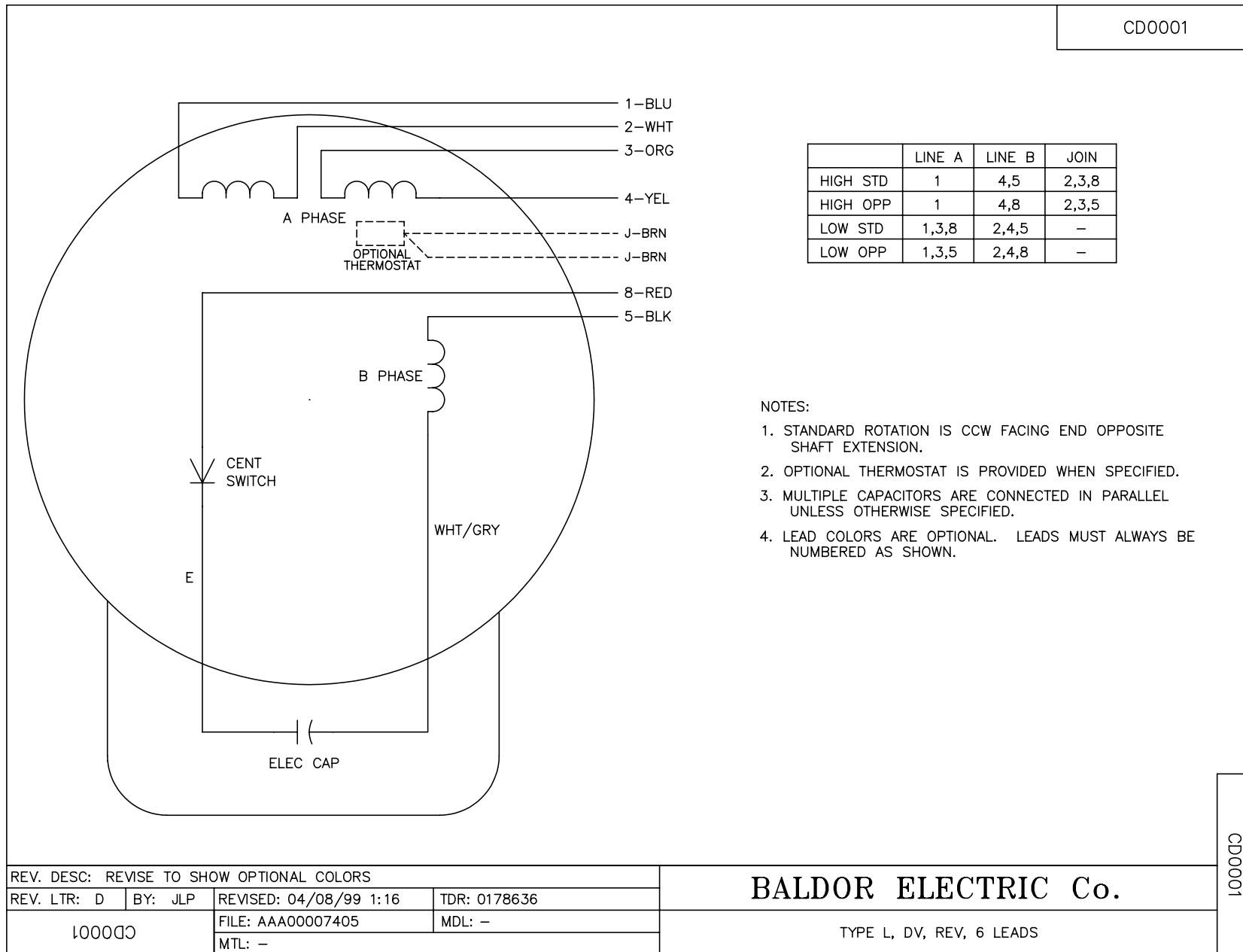
% of Rated Load	25	50	75	100	125	150	S.F.
Power Factor	43	59	71	78	82	84	82
Efficiency	46.6	61.1	66.4	68	67	63.9	67
Speed	1481	1466	1448	1428	1403	1369	1403
Line amperes	6.7	7.3	8.3	9.7	11.5	13.9	11.5

Performance Graph at 110V, 50Hz, 0.75HP Typical performance - Not guaranteed values





CD0001



REV. DESC: REVISE TO SHOW OPTIONAL COLORS			
REV. LTR: D	BY: JLP	REVISED: 04/08/99 1:16	TDR: 0178636
100000		FILE: AAA00007405	MDL: -
		MTL: -	

**BALDOR ELECTRIC Co.**

TYPE L, DV, REV, 6 LEADS

CD0001