

BALDOR® • RELIANCE

Product Information Packet

GM3329

.16HP,3425RPM,3PH,60HZ,BA-0,2512M,TEFC

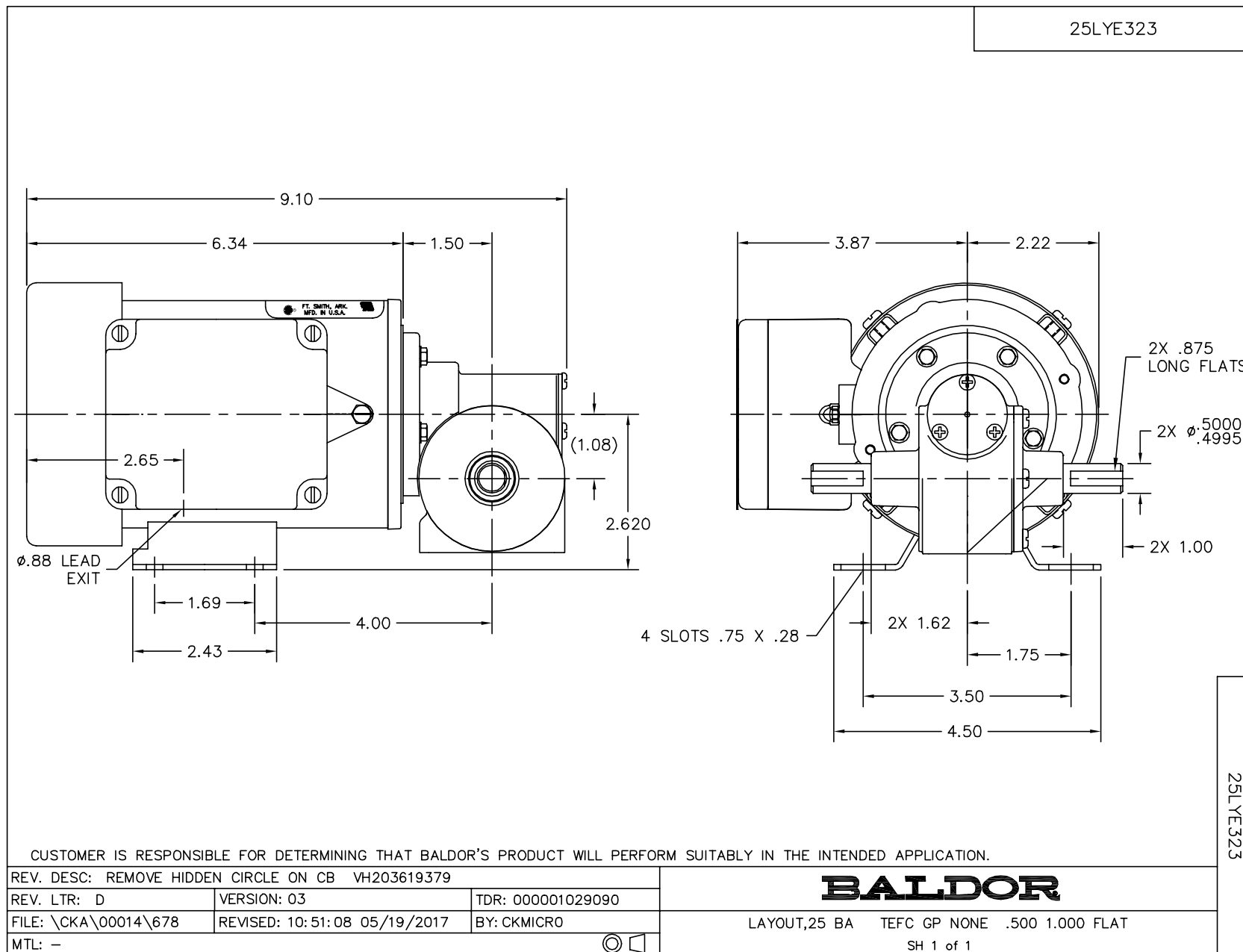
Part Detail							
Revision:	Z	Status:	PRD/A	Change #:		Proprietary:	No
Type:	AC	Elec. Spec:	25WGW219	CD Diagram:	CD0005A05	Mfg Plant:	
Mech. Spec:		Layout:	25LYE323	Poles:	02	Created Date:	
Base:		Eff. Date:	09-22-2017	Leads:	9#18		

Specs			
Enclosure:	TEFC		
Gearhead Type:	RIGHT ANGLE		
Gear Ratio:	15:1		
Gear Style:	BA		
Connection Diagram:	CD0005A05		
Dimensional Drawing Numbers:	25LYE323		
Duty Rating:	CONT		
Frame Material:	Steel		
Insulation Class:	F		
KVA Code:	-		

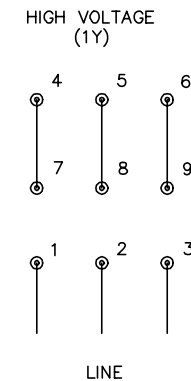
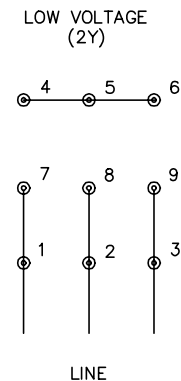
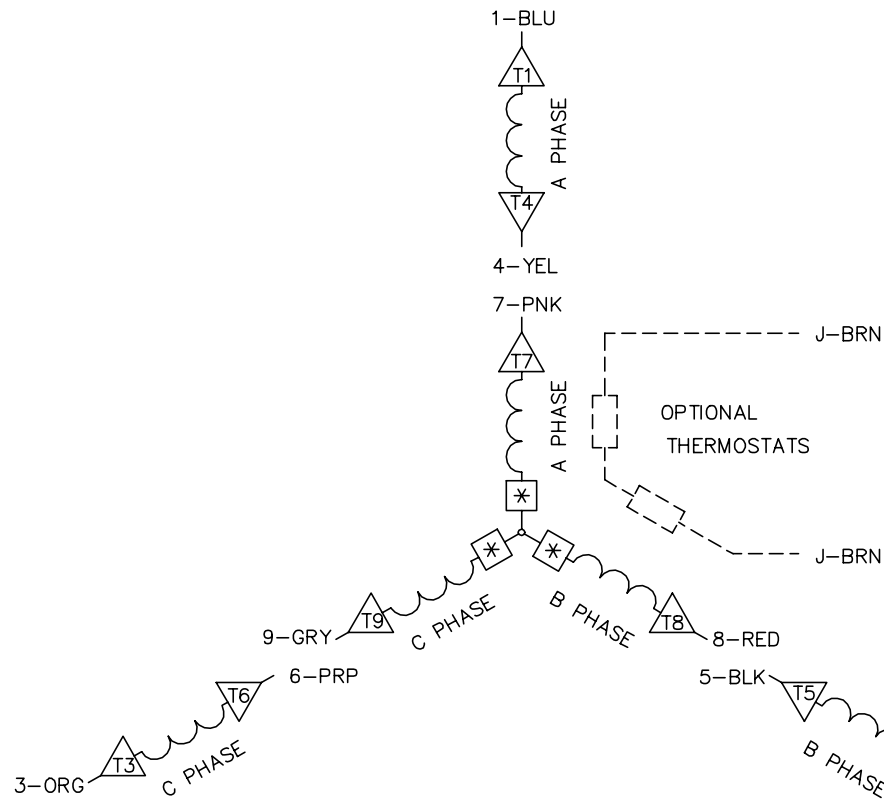
Nameplate NP1220A07

CAT.NO.	GM3329		
SER.NO			
SPEC.	25E323W219G1		
HP	.16	TE	
VOLTS	208-230/460		
AMP	.65/.33		
HZ	60	PH	3
AMB.	40	DUTY	CONT
CAP		CODE	-
SER.F.	1.00	CLASS	F
R.P.M.	230		
TORQ/IN LB	27		
RATIO	15:1		
APRV-CSA		APRV-UL	

No performance data has been
assigned to this product.



CD0005A05



NOTES:

1. INTERCHANGE ANY TWO LINE LEADS TO REVERSE ROTATION.
2. OPTIONAL THERMOSTATS ARE PROVIDED WHEN SPECIFIED.
3. ACTUAL NUMBER OF INTERNAL PARALLEL CIRCUITS MAY BE A MULTIPLE OF THOSE SHOWN ABOVE.
4. LEAD COLORS ARE OPTIONAL. LEADS MUST ALWAYS BE NUMBERED AS SHOWN.
5. =MAGNET WIRE COIL END WITH I.D. NUMBER.
6. =MAGNET WIRE COIL END WITH I.D. SYMBOL.
7. SEE CW PRINT FOR NEST TO NEST CROSSOVER CONNECTIONS.

REV. DESC: ADD NEST NOTE

REV. LTR: C

VERSION: 03

TDR: 000000445597

CD0005A05

FILE: \CKA\00024\847

REVISED: 12:51:06 11/15/2007

MTL: -

BY: CKMICRO

BALDOR • DODGE • RELIANCE

3PH, DV, 9 LEADS, CK

CD0005A05