

# **BALDOR**® • ***RELIANCE***

## **Product Information Packet**

# **L3613T**

**1.5HP, 1140RPM, 1PH, 60HZ, 184T, 3634LC, TEFC**

Part Detail							
Revision:	AP	Status:	PRD/A	Change #:		Proprietary:	No
Type:	AC	Elec. Spec:	36WG839	CD Diagram:	CD0055	Mfg Plant:	
Mech. Spec:	36E004	Layout:	36LYE004	Poles:	06	Created Date:	
Base:	RG	Eff. Date:	09-10-2015	Leads:	6#16		

Specs			
Catalog Number:	L3613T	Insulation Class:	F
Enclosure:	TEFC	Inverter Code:	Not Inverter
Frame:	184T	KVA Code:	J
Frame Material:	Steel	Lifting Lugs:	No Lifting Lugs
Output @ Frequency:	1.500 HP @ 60 HZ	Locked Bearing Indicator:	No Locked Bearing
Synchronous Speed @ Frequency:	1200 RPM @ 60 HZ	Motor Lead Quantity/Wire Size:	6 @ 16 AWG
Voltage @ Frequency:	230.0 V @ 60 HZ	Motor Lead Exit:	Ko Box
	115.0 V @ 60 HZ	Motor Lead Termination:	Flying Leads
XP Class and Group:	None	Motor Type:	3634LC
XP Division:	Not Applicable	Mounting Arrangement:	F1
Agency Approvals:	CSA	Power Factor:	81
	UR	Product Family:	General Purpose
Auxillary Box:	No Auxillary Box	Pulley End Bearing Type:	Ball
Auxillary Box Lead Termination:	None	Pulley Face Code:	Standard
Base Indicator:	Rigid	Pulley Shaft Indicator:	Standard
Bearing Grease Type:	Polyrex EM (-20F +300F)	Rodent Screen:	None
Blower:	None	Shaft Extension Location:	Pulley End
Current @ Voltage:	16.400 A @ 115.0 V	Shaft Ground Indicator:	No Shaft Grounding

	8.200 A @ 230.0 V	<b>Shaft Rotation:</b>	Reversible
	8.600 A @ 208.0 V	<b>Shaft Slinger Indicator:</b>	No Slinger
<b>Design Code:</b>	L	<b>Speed Code:</b>	Single Speed
<b>Drip Cover:</b>	No Drip Cover	<b>Motor Standards:</b>	NEMA
<b>Duty Rating:</b>	CONT	<b>Starting Method:</b>	Direct on line
<b>Electrically Isolated Bearing:</b>	Not Electrically Isolated	<b>Thermal Device - Bearing:</b>	None
<b>Feedback Device:</b>	NO FEEDBACK	<b>Thermal Device - Winding:</b>	None
<b>Front Face Code:</b>	Standard	<b>Vibration Sensor Indicator:</b>	No Vibration Sensor
<b>Front Shaft Indicator:</b>	None	<b>Winding Thermal 1:</b>	None
<b>Heater Indicator:</b>	No Heater	<b>Winding Thermal 2:</b>	None

Nameplate NP1256L										
CAT.NO.	L3613T									
SPEC.	36E04W839									
HP	1.5									
VOLTS	115/230									
AMP	16.4/8.2									
RPM	1140									
FRAME	184T				HZ	60			PH	1
SER.F.	1.15		CODE	J	DES	L		CLASS	F	
NEMA-NOM-EFF	73		PF	81						
RATING	40C AMB-CONT									
CC								USABLE AT 208V	8.6	
DE	6206				ODE	6205				
ENCL	TEFC			SN						

**AC Induction Motor Performance Data**

Record # 44641 - Typical performance - not guaranteed values

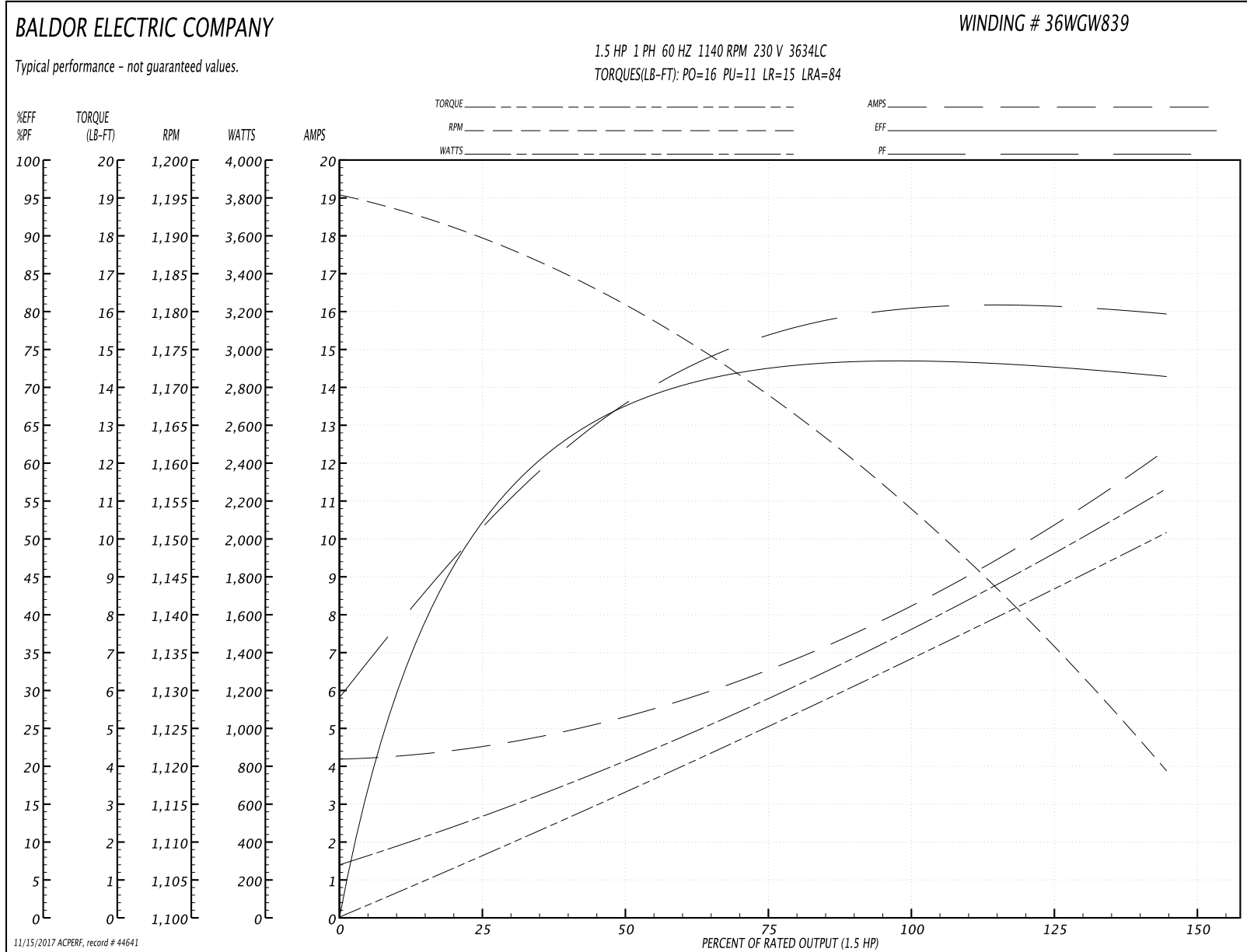
<b>Winding:</b> 36WGW839-R001	<b>Type:</b> 3634LC	<b>Enclosure:</b> TEFC
-------------------------------	---------------------	------------------------

Nameplate Data				230 V, 60 Hz: High Voltage Connection	
Rated Output (HP)	1.5			Full Load Torque	6.8 LB-FT
Volts	115/230			Start Configuration	direct on line
Full Load Amps	16.4/8.2			Breakdown Torque	16 LB-FT
R.P.M.	1140			Pull-up Torque	11 LB-FT
Hz	60	Phase	1	Locked-rotor Torque	15 LB-FT
NEMA Design Code	L	KVA Code	J	Starting Current	84 A
Service Factor (S.F.)	1.15			No-load Current	4.1 A
NEMA Nom. Eff.	73	Power Factor	81	Line-line Res. @ 25°C	0.403 Ω A Ph 1.01 Ω B Ph
Rating - Duty	40C AMB-CONT			Temp. Rise @ Rated Load	76°C
S.F. Amps				Temp. Rise @ S.F. Load	90°C
				Rotor inertia	0.319 LB-FT <sup>2</sup>

Load Characteristics 230 V, 60 Hz, 1.5 HP

% of Rated Load	25	50	75	100	125	150	S.F.
Power Factor	53	68	76	81	81	80	81
Efficiency	51.4	66.5	72.4	74.3	73.8	70.7	74
Speed	1188	1179	1168	1156	1140	1117	1146
Line amperes	4.6	5.5	6.5	8.2	10	12.5	9.2

Performance Graph at 230V, 60Hz, 1.5HP Typical performance - Not guaranteed values



**AC Induction Motor Performance Data**  
Record # 44642 - Typical performance - not guaranteed values

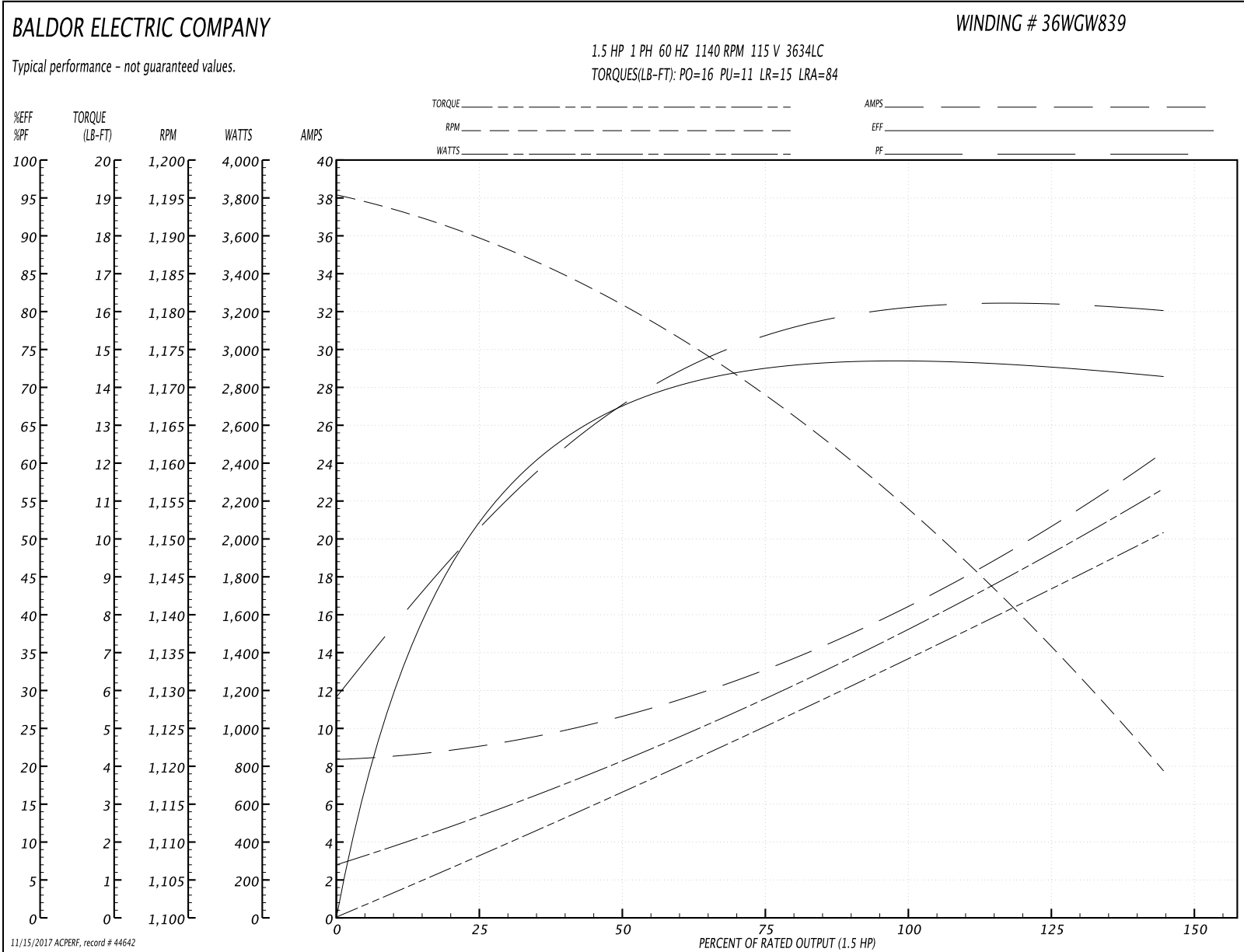
<b>Winding:</b> 36WGW839-R001	<b>Type:</b> 3634LC	<b>Enclosure:</b> TEFC
-------------------------------	---------------------	------------------------

Nameplate Data				115 V, 60 Hz: Low Voltage Connection	
Rated Output (HP)	1.5			Full Load Torque	6.8 LB-FT
Volts	115/230			Start Configuration	direct on line
Full Load Amps	16.4/8.2			Breakdown Torque	16 LB-FT
R.P.M.	1140			Pull-up Torque	11 LB-FT
Hz	60	Phase	1	Locked-rotor Torque	15 LB-FT
NEMA Design Code	L	KVA Code	J	Starting Current	84 A
Service Factor (S.F.)	1.15			No-load Current	8.2 A
NEMA Nom. Eff.	73	Power Factor	81	Line-line Res. @ 25°C	0.403 Ω A Ph 1.01 Ω B Ph
Rating - Duty	40C AMB-CONT			Temp. Rise @ Rated Load	76°C
S.F. Amps				Temp. Rise @ S.F. Load	90°C
				Rotor inertia	0.319 LB-FT <sup>2</sup>

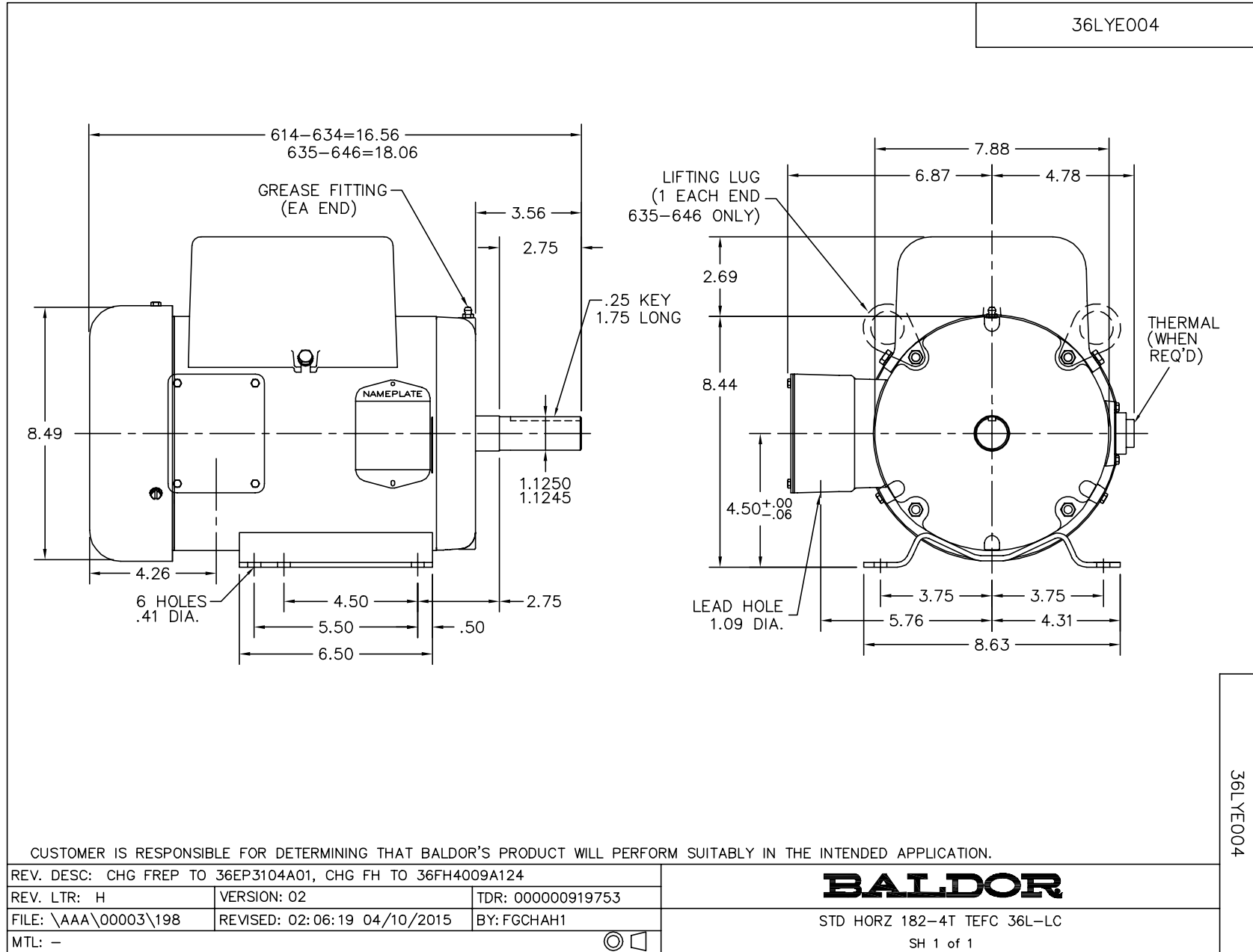
**Load Characteristics 115 V, 60 Hz, 1.5 HP**

% of Rated Load	25	50	75	100	125	150	S.F.
Power Factor	53	68	76	81	81	80	81
Efficiency	51.4	66.5	72.4	74.3	73.8	70.7	74
Speed	1188	1179	1168	1156	1140	1117	1146
Line amperes	9.2	10.9	13.3	16.2	19.9	24.9	18.4

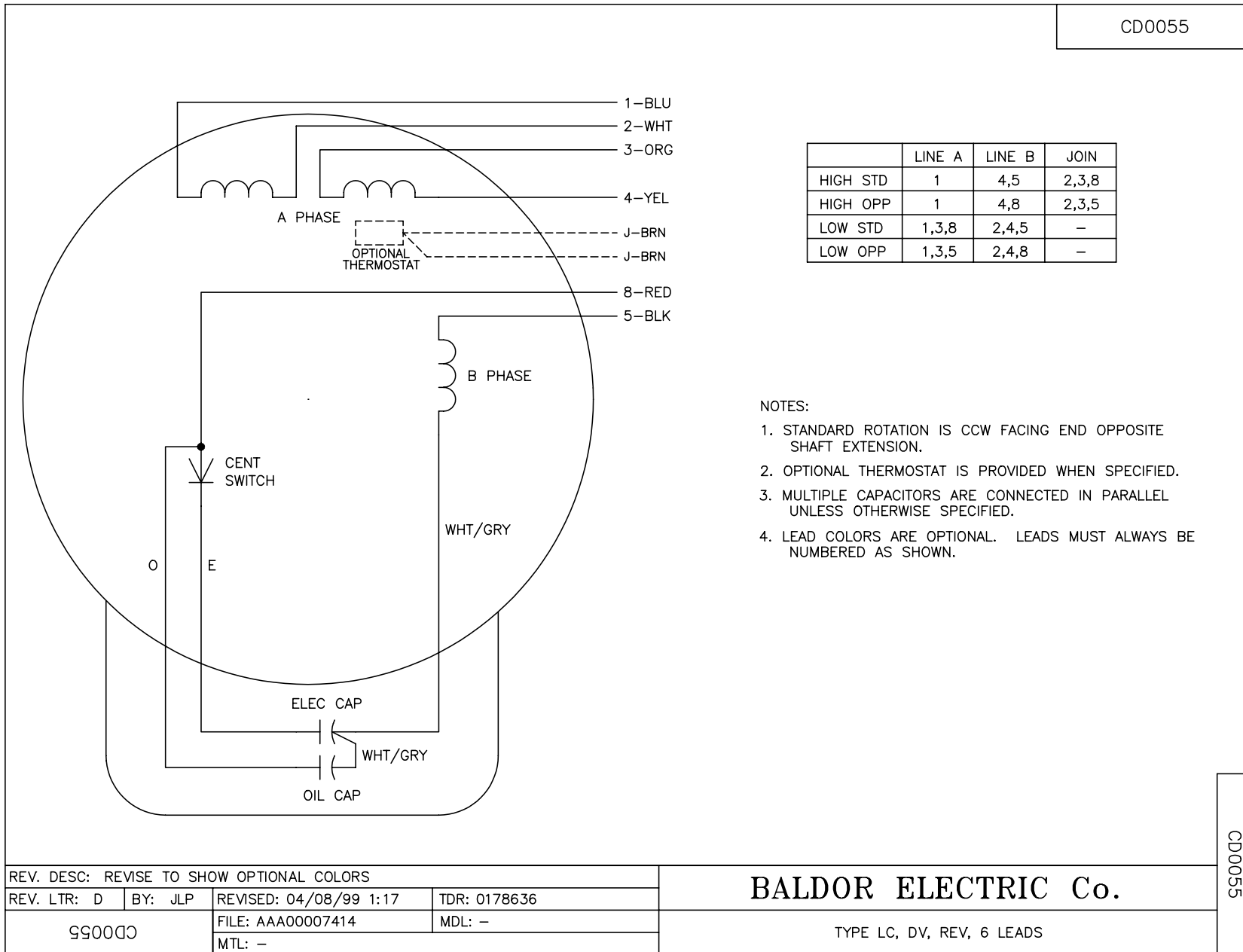
Performance Graph at 115V, 60Hz, 1.5HP Typical performance - Not guaranteed values



11/15/2017 ACPERF, record # 44642



CD0055



REV. DESC: REVISE TO SHOW OPTIONAL COLORS			
REV. LTR: D	BY: JLP	REVISED: 04/08/99 1:17	TDR: 0178636
990000		FILE: AAA00007414	MDL: -
		MTL: -	

**BALDOR ELECTRIC Co.**

TYPE LC, DV, REV, 6 LEADS

CD0055