

BALDOR® • **RELIANCE**

Product Information Packet

M3705T

3HP,860RPM,3PH,60HZ,215T,3743M,TEFC,F1,N

Part Detail							
Revision:	T	Status:	INA/A	Change #:		Proprietary:	No
Type:	AC	Elec. Spec:	37WGT900	CD Diagram:	CD0005	Mfg Plant:	
Mech. Spec:	37A001	Layout:	37LYA001	Poles:	08	Created Date:	
Base:	RG	Eff. Date:	03-08-2016	Leads:	9#14		

Specs			
Catalog Number:	M3705T	Heater Indicator:	No Heater
Enclosure:	TEFC	Insulation Class:	F
Frame:	215T	Inverter Code:	Not Inverter
Frame Material:	Steel	KVA Code:	K
Output @ Frequency:	3.000 HP @ 60 HZ	Lifting Lugs:	Standard Lifting Lugs
Synchronous Speed @ Frequency:	900 RPM @ 60 HZ	Locked Bearing Indicator:	No Locked Bearing
Voltage @ Frequency:	208.0 V @ 60 HZ	Motor Lead Quantity/Wire Size:	9 @ 14 AWG
	230.0 V @ 60 HZ	Motor Lead Exit:	Ko Box
	460.0 V @ 60 HZ	Motor Lead Termination:	Flying Leads
XP Class and Group:	None	Motor Type:	3743M
XP Division:	Not Applicable	Mounting Arrangement:	F1
Agency Approvals:	UR	Power Factor:	61
	CSA	Product Family:	General Purpose
Auxillary Box:	No Auxillary Box	Pulley End Bearing Type:	Ball
Auxillary Box Lead Termination:	None	Pulley Face Code:	Standard
Base Indicator:	Rigid	Pulley Shaft Indicator:	Standard
Bearing Grease Type:	Polyrex EM (-20F +300F)	Rodent Screen:	None
Blower:	None	Shaft Extension Location:	Pulley End

Current @ Voltage:	11.200 A @ 230.0 V	Shaft Ground Indicator:	No Shaft Grounding
	12.100 A @ 208.0 V	Shaft Rotation:	Reversible
	5.600 A @ 460.0 V	Shaft Slinger Indicator:	No Slinger
Design Code:	B	Speed Code:	Single Speed
Drip Cover:	No Drip Cover	Motor Standards:	NEMA
Duty Rating:	CONT	Starting Method:	Direct on line
Electrically Isolated Bearing:	Not Electrically Isolated	Thermal Device - Bearing:	None
Feedback Device:	NO FEEDBACK	Thermal Device - Winding:	None
Front Face Code:	Standard	Vibration Sensor Indicator:	No Vibration Sensor
Front Shaft Indicator:	None	Winding Thermal 1:	None
		Winding Thermal 2:	None

Nameplate NP1256L										
CAT.NO.	M3705T									
SPEC.	37A001T900									
HP	3									
VOLTS	208-230/460									
AMP	12.1-11.2/5.6									
RPM	865									
FRAME	215T				HZ	60			PH	3
SER.F.	1.15		CODE	K	DES	B		CLASS	F	
NEMA-NOM-EFF	84		PF	61						
RATING	40C AMB-CONT									
CC	010A				USABLE AT 208V					
DE	6307				ODE	6206				
ENCL	TEFC		SN							

AC Induction Motor Performance Data

Record # 25095 - Typical performance - not guaranteed values

Winding: 37WGT900-R001	Type: 3742M	Enclosure: TEFC
-------------------------------	--------------------	------------------------

Nameplate Data				460 V, 60 Hz: High Voltage Connection	
Rated Output (HP)	3			Full Load Torque	18.29 LB-FT
Volts	208-230/460			Start Configuration	direct on line
Full Load Amps	12.1-11.2/5.6			Breakdown Torque	57.68 LB-FT
R.P.M.	865			Pull-up Torque	34.5 LB-FT
Hz	60	Phase	3	Locked-rotor Torque	44.15 LB-FT
NEMA Design Code	B	KVA Code	K	Starting Current	32.69 A
Service Factor (S.F.)	1.15			No-load Current	3.74 A
NEMA Nom. Eff.	84	Power Factor	61	Line-line Res. @ 25°C	2.98 Ω
Rating - Duty	40C AMB-CONT			Temp. Rise @ Rated Load	66°C
S.F. Amps				Temp. Rise @ S.F. Load	76°C
				Locked-rotor Power Factor	32.5
				Rotor inertia	1.04 LB-FT ²

Load Characteristics 460 V, 60 Hz, 3 HP

% of Rated Load	25	50	75	100	125	150	S.F.
Power Factor	25	40	51	60	65	70	65
Efficiency	73.8	81.5	84.5	84.1	83	80.6	83.4
Speed	892	884	876	867	857	844	860
Line amperes	3.97	4.38	4.94	5.64	6.5	7.56	6.07

Performance Graph at 460V, 60Hz, 3.0HP Typical performance - Not guaranteed values

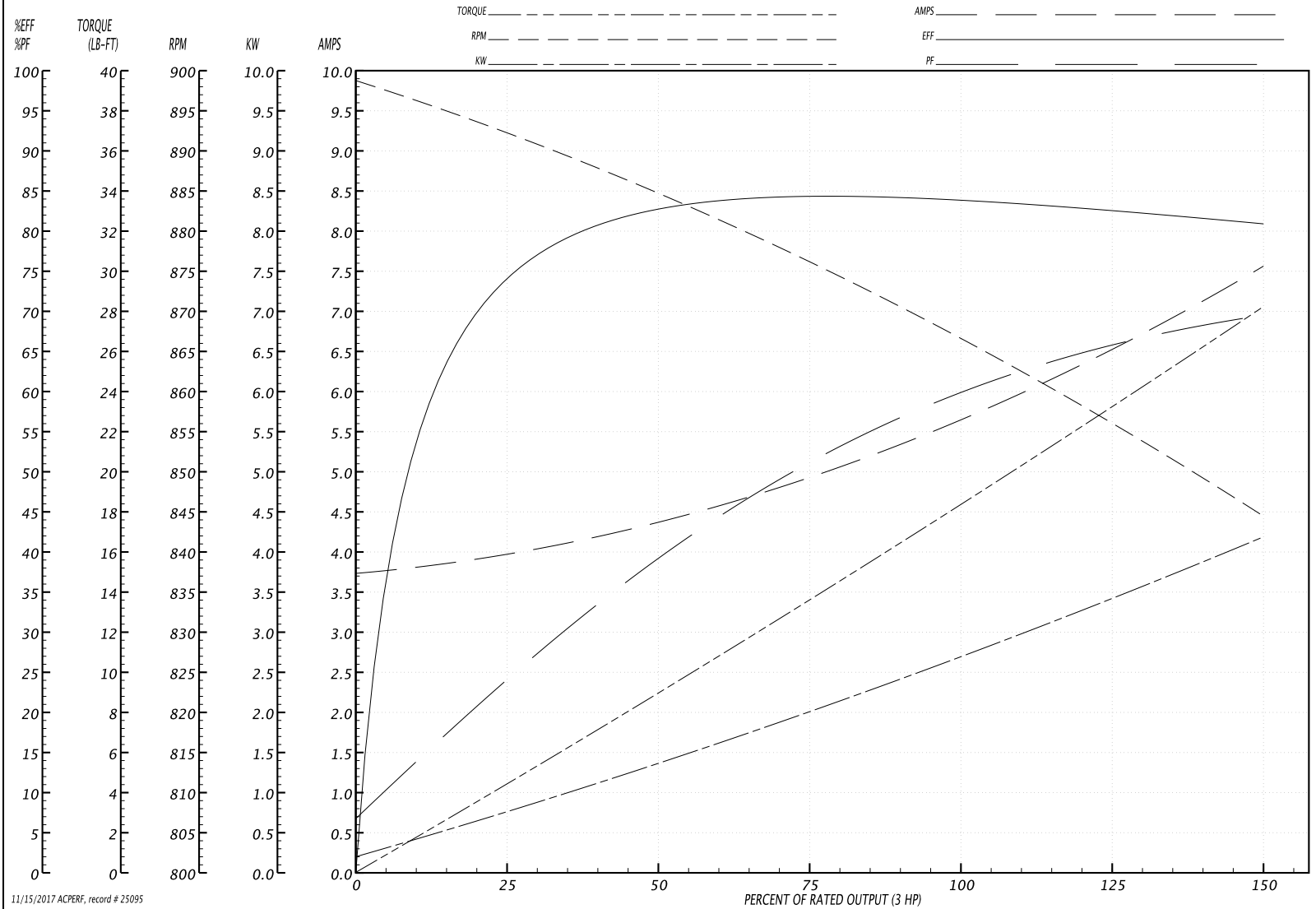
BALDOR ELECTRIC COMPANY

WINDING # 37WGT900

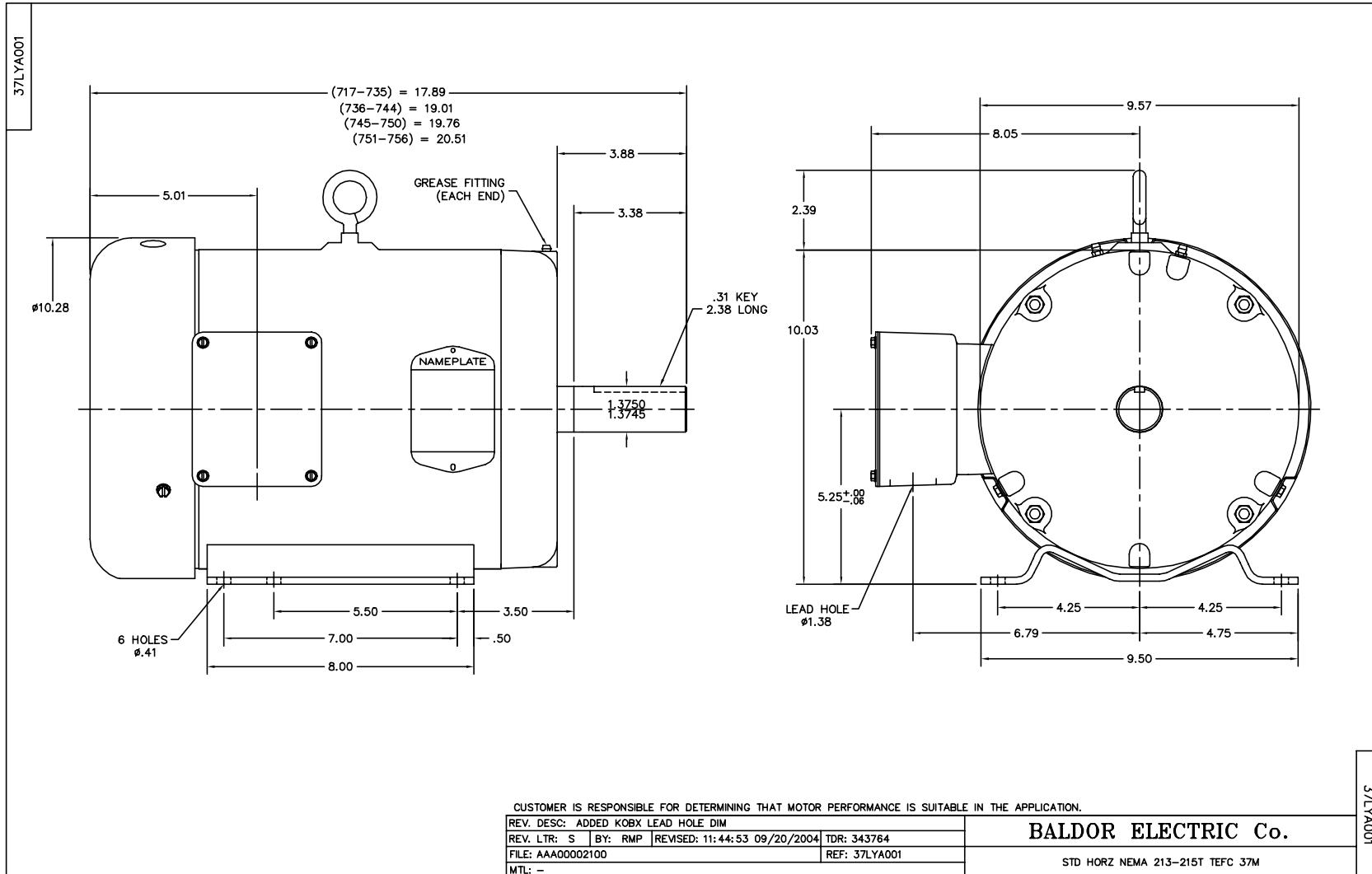
Typical performance - not guaranteed values.

3 HP 3 PH 60 HZ 865 RPM 460 V 3742M

TORQUES(LB-FT): PO=57.68 PU=34.5 LR=44.15 LRA=32.69



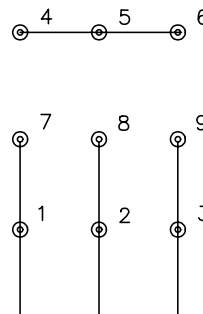
11/15/2017 ACPERF, record # 25095



CD0005

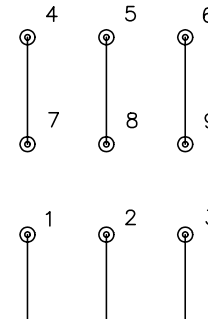


LOW VOLTAGE
(2Y)



LINE

HIGH VOLTAGE
(1Y)



LINE

NOTES:

1. INTERCHANGE ANY TWO LINE LEADS TO REVERSE ROTATION.
2. OPTIONAL THERMOSTATS ARE PROVIDED WHEN SPECIFIED.
3. ACTUAL NUMBER OF INTERNAL PARALLEL CIRCUITS MAY BE A MULTIPLE OF THOSE SHOWN ABOVE.
4. LEAD COLORS ARE OPTIONAL. LEADS MUST ALWAYS BE NUMBERED AS SHOWN.

REV. DESC: REVISE TO SHOW OPTIONAL COLORS			
REV. LTR: E	BY: JLP	REVISED: 01/19/99 10:15	TDR: 0171435
9000D		FILE: AAA00005140	MDL: -
		MTL: -	

BALDOR ELECTRIC Co.

3PH, DV, 9 LEADS

CD0005