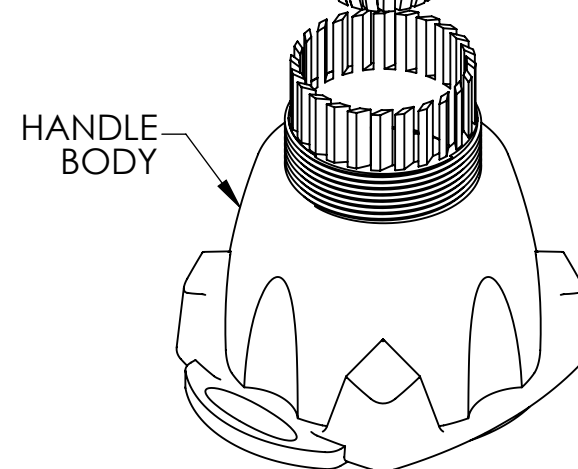
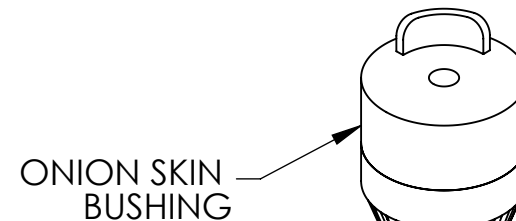
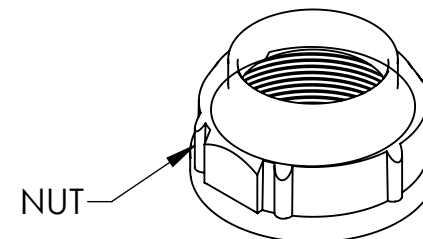
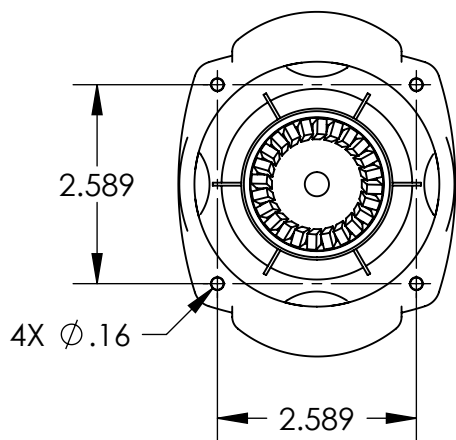
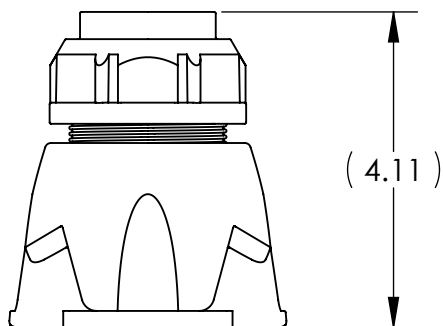
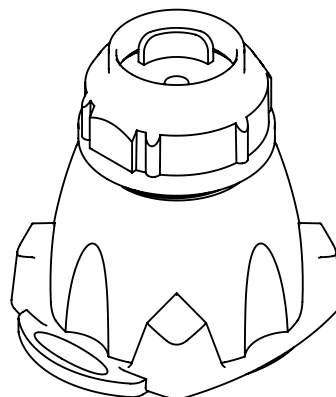
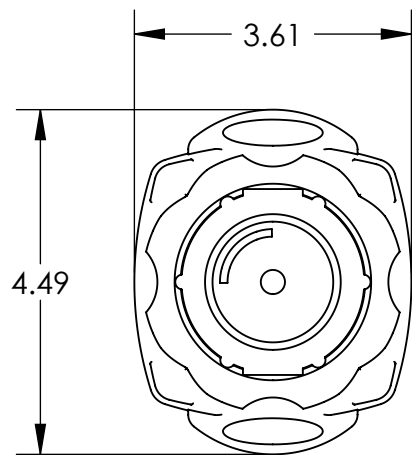




This drawing is the property of MELTRIC Corporation, Franklin, Wisconsin, USA. Any unauthorized copying of this drawing by any means, or disclosure of its contents to any person not authorized by MELTRIC Corporation or its agents to receive it, is strictly prohibited.



REV.	DATE	CHANGED BY	REMARKS	ECN#

TOLERANCES UNLESS OTHERWISE SPECIFIED			
MACHINED SURFACES GROUND SURFACES ANGLE TOLERANCE $\pm 1^\circ$ REMOVE BURRS & SHARP EDGES TO .015 MAX.		ENGLISH 0.X $\pm 0.05$ 0.XX $\pm 0.01$ 0.XXX $\pm 0.005$	
DIMENSIONS SHOWN IN OVALS ARE INSPECTION DIMENSIONS.		DRAWN:  APPROVED: 	
DATE:		SCALE: NTS	DRAWING TITLE: POLY HANDLE W/BUILT IN GRIPS
PROJECT NUMBER		PART NUMBER: FH611-473	MATERIAL: BLUE POLYAMIDE
SHEET: 1 OF 1			ISSUED DATE: 1/7/11