

BALDOR® • RELIANCE

Product Information Packet

AOM3554T

1.5 AIR OVERHP, 1735RPM, 3PH, 60HZ, 145T, 352

| Part Detail | | | | | | | |
|-------------|--------|-------------|------------|-------------|-------------|---------------|------------|
| Revision: | H | Status: | PRD/A | Change #: | | Proprietary: | No |
| Type: | AC | Elec. Spec: | 35WGP801 | CD Diagram: | CD0005 | Mfg Plant: | |
| Mech. Spec: | 35K695 | Layout: | 35LYK695 | Poles: | 04 | Created Date: | 08-13-2010 |
| Base: | RG | Eff. Date: | 02-02-2017 | Leads: | 9#18 36" LG | | Y |

| Specs | | | |
|---------------------------------|-------------------------|--------------------------------|-----------------|
| Catalog Number: | AOM3554T | Heater Indicator: | No Heater |
| Enclosure: | TEAO | Insulation Class: | F |
| Frame: | 145T | Inverter Code: | Not Inverter |
| Frame Material: | Steel | KVA Code: | L |
| Output @ Frequency: | 1.500 HP @ 60 HZ | Lifting Lugs: | No Lifting Lugs |
| Synchronous Speed @ Frequency: | 1800 RPM @ 60 HZ | Locked Bearing Indicator: | Locked Bearing |
| Voltage @ Frequency: | 208.0 V @ 60 HZ | Motor Lead Quantity/Wire Size: | 9 @ 18 AWG |
| | 230.0 V @ 60 HZ | Motor Lead Exit: | Ko Box |
| | 460.0 V @ 60 HZ | Motor Lead Termination: | Flying Leads |
| XP Class and Group: | None | Motor Type: | 3520M |
| XP Division: | Not Applicable | Mounting Arrangement: | F1 |
| Agency Approvals: | UR | Power Factor: | 74 |
| | CSA | Product Family: | General Purpose |
| Auxillary Box: | No Auxillary Box | Pulley End Bearing Type: | Ball |
| Auxillary Box Lead Termination: | None | Pulley Face Code: | Standard |
| Base Indicator: | Rigid | Pulley Shaft Indicator: | Standard |
| Bearing Grease Type: | Polyrex EM (-20F +300F) | Rodent Screen: | None |
| Blower: | None | Shaft Extension Location: | Pulley End |

| | | | |
|---------------------------------------|---------------------------|------------------------------------|---------------------|
| Current @ Voltage: | 2.300 A @ 460.0 V | Shaft Ground Indicator: | No Shaft Grounding |
| | 4.600 A @ 230.0 V | Shaft Rotation: | Reversible |
| | 5.000 A @ 208.0 V | Shaft Slinger Indicator: | No Slinger |
| Design Code: | B | Speed Code: | Single Speed |
| Drip Cover: | No Drip Cover | Motor Standards: | NEMA |
| Duty Rating: | CONT | Starting Method: | Direct on line |
| Electrically Isolated Bearing: | Not Electrically Isolated | Thermal Device - Bearing: | None |
| Feedback Device: | NO FEEDBACK | Thermal Device - Winding: | None |
| Front Face Code: | Standard | Vibration Sensor Indicator: | No Vibration Sensor |
| Front Shaft Indicator: | None | Winding Thermal 1: | None |
| | | Winding Thermal 2: | None |

| Nameplate NP1256L | | | | | | | | | | |
|-------------------|--------------------|--|------|----|-----|------|--|-------|----------------|---|
| CAT.NO. | AOM3554T | | | | | | | | | |
| SPEC. | 35K695P801G1 | | | | | | | | | |
| HP | 1.5 AIR OVER | | | | | | | | | |
| VOLTS | 208-230/460 | | | | | | | | | |
| AMP | 5-4.6/2.3 | | | | | | | | | |
| RPM | 1735 | | | | | | | | | |
| FRAME | 145T | | | | HZ | 60 | | | PH | 3 |
| SER.F. | 1.00 | | CODE | L | DES | B | | CLASS | F | |
| NEMA-NOM-EFF | 81.5 | | PF | 74 | | | | | | |
| RATING | 40C AMB-CONT | | | | | | | | | |
| CC | | | | | | | | | USABLE AT 208V | |
| DE | 6205 | | | | ODE | 6203 | | | | |
| ENCL | TEAO | | SN | | | | | | | |
| | 1500 FPM AT 66 CFM | | | | | | | | | |

AC Induction Motor Performance Data

Record # 36563 - Typical performance - not guaranteed values

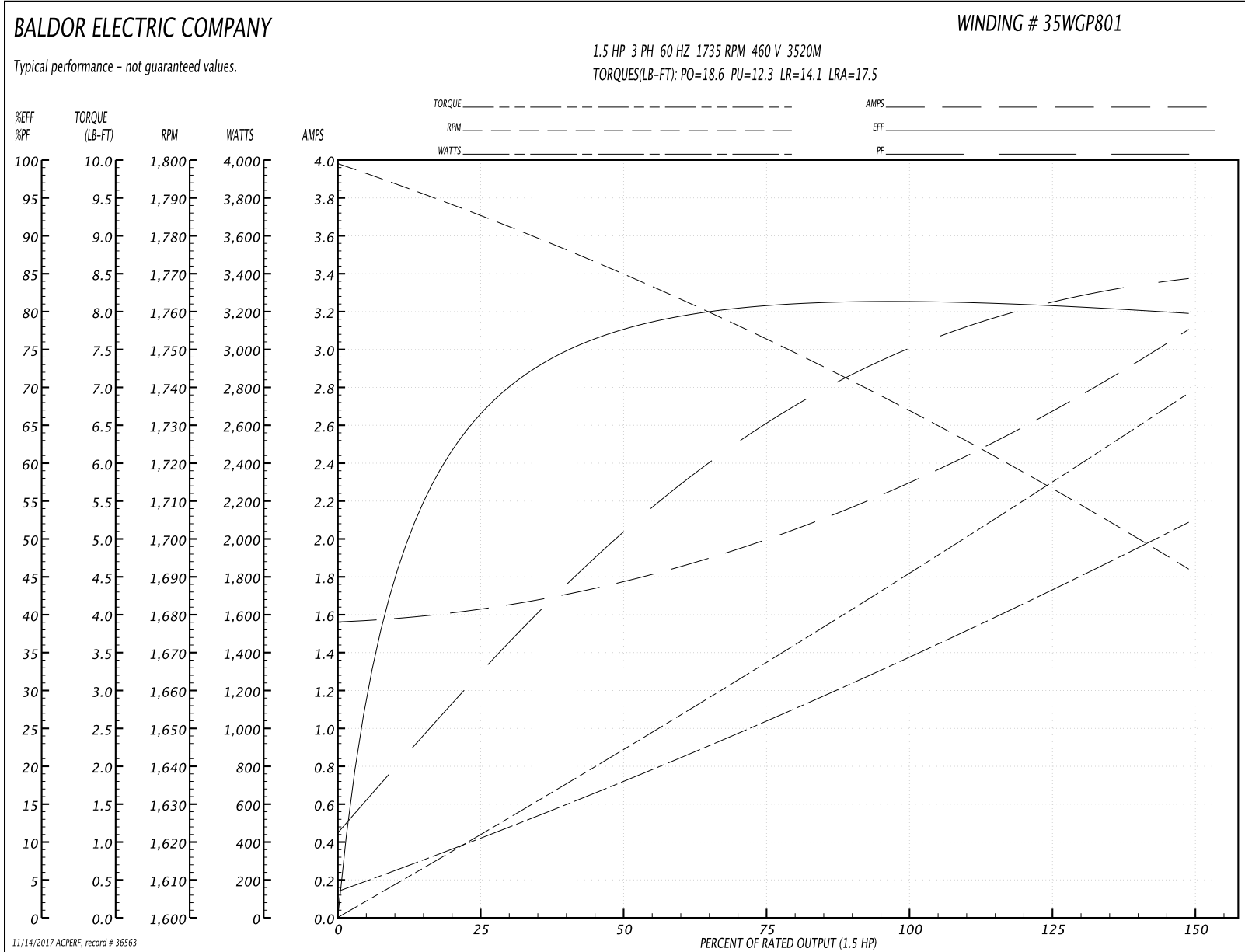
| | | |
|-------------------------------|--------------------|------------------------|
| Winding: 35WGP801-R008 | Type: 3520M | Enclosure: TEAO |
|-------------------------------|--------------------|------------------------|

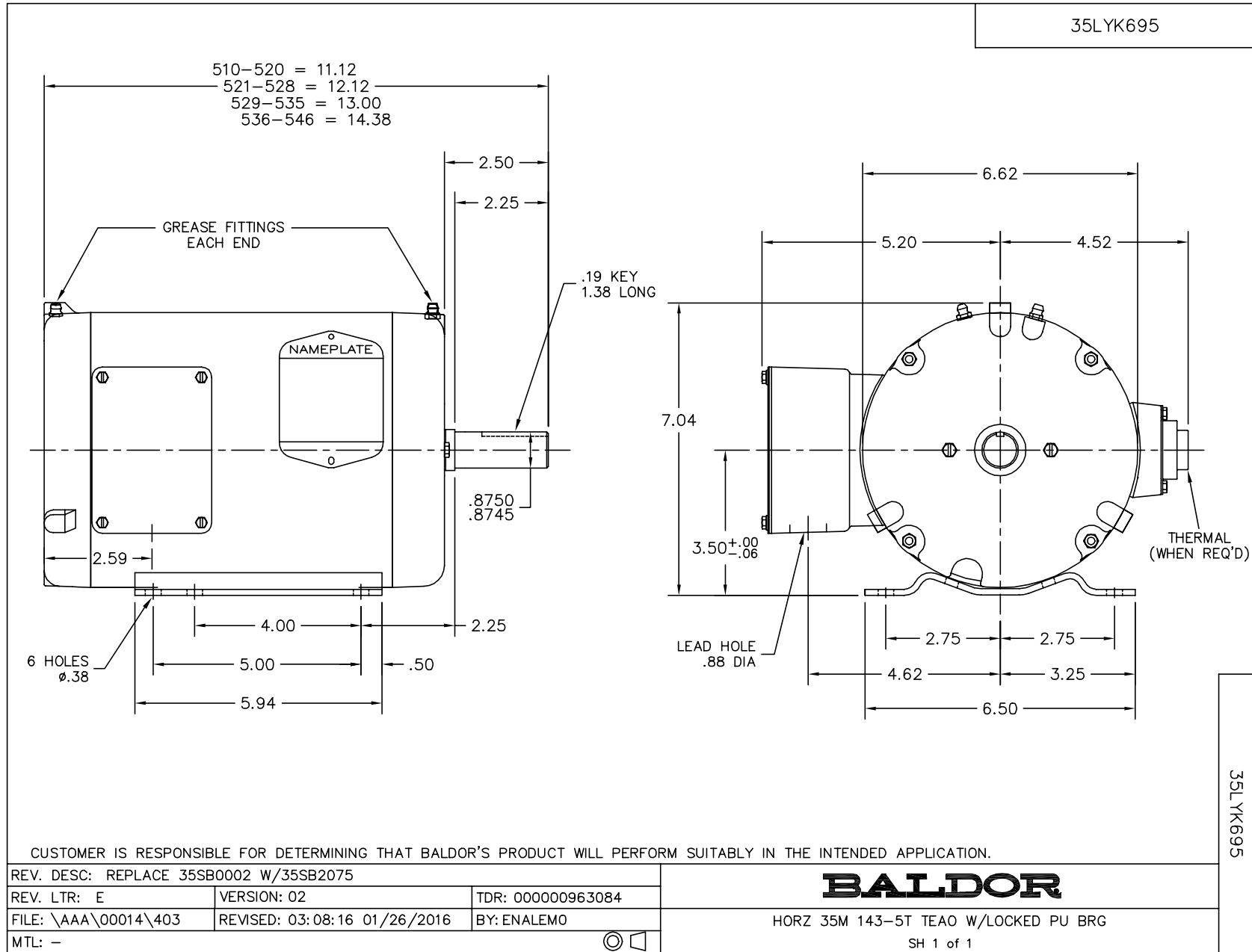
| Nameplate Data | | | | 460 V, 60 Hz: High Voltage Connection | |
|-----------------------|--------------|--------------|----|--|--------------------------|
| Rated Output (HP) | 1.5 AIR OVER | | | Full Load Torque | 4.5 LB-FT |
| Volts | 208-230/460 | | | Start Configuration | direct on line |
| Full Load Amps | 5-4.6/2.3 | | | Breakdown Torque | 18.6 LB-FT |
| R.P.M. | 1735 | | | Pull-up Torque | 12.3 LB-FT |
| Hz | 60 | Phase | 3 | Locked-rotor Torque | 14.1 LB-FT |
| NEMA Design Code | B | KVA Code | L | Starting Current | 17.5 A |
| Service Factor (S.F.) | 1 | | | No-load Current | 1.57 A |
| NEMA Nom. Eff. | 81.5 | Power Factor | 74 | Line-line Res. @ 25°C | 12.9 Ω |
| Rating - Duty | 40C AMB-CONT | | | Temp. Rise @ Rated Load | 71°C |
| S.F. Amps | | | | Temp. Rise @ S.F. Load | 81°C |
| | | | | Locked-rotor Power Factor | 70 |
| | | | | Rotor inertia | 0.118 LB-FT ² |

Load Characteristics 460 V, 60 Hz, 1.5 HP

| % of Rated Load | 25 | 50 | 75 | 100 | 125 | 150 |
|-----------------|------|------|------|------|------|------|
| Power Factor | 32 | 51 | 65 | 74 | 81 | 85 |
| Efficiency | 65.9 | 77 | 80.9 | 81.5 | 81 | 79.7 |
| Speed | 1786 | 1770 | 1753 | 1735 | 1714 | 1692 |
| Line amperes | 1.62 | 1.76 | 1.99 | 2.3 | 2.66 | 3.1 |

Performance Graph at 460V, 60Hz, 1.5HP Typical performance - Not guaranteed values

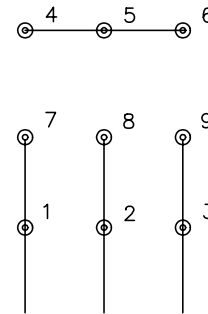




CD0005

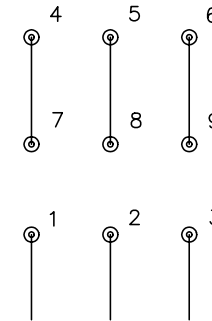


LOW VOLTAGE
(2Y)



LINE

HIGH VOLTAGE
(1Y)



LINE

NOTES:

1. INTERCHANGE ANY TWO LINE LEADS TO REVERSE ROTATION.
2. OPTIONAL THERMOSTATS ARE PROVIDED WHEN SPECIFIED.
3. ACTUAL NUMBER OF INTERNAL PARALLEL CIRCUITS MAY BE A MULTIPLE OF THOSE SHOWN ABOVE.
4. LEAD COLORS ARE OPTIONAL. LEADS MUST ALWAYS BE NUMBERED AS SHOWN.

| | | | |
|---|---------|-------------------------|--------------|
| REV. DESC: REVISE TO SHOW OPTIONAL COLORS | | | |
| REV. LTR: E | BY: JLP | REVISED: 01/19/99 10:15 | TDR: 0171435 |
| 9000D | | FILE: AAA00005140 | MDL: - |
| | | MTL: - | |

BALDOR ELECTRIC Co.

3PH, DV, 9 LEADS

CD0005