

BALDOR® • ***RELIANCE***

Product Information Packet

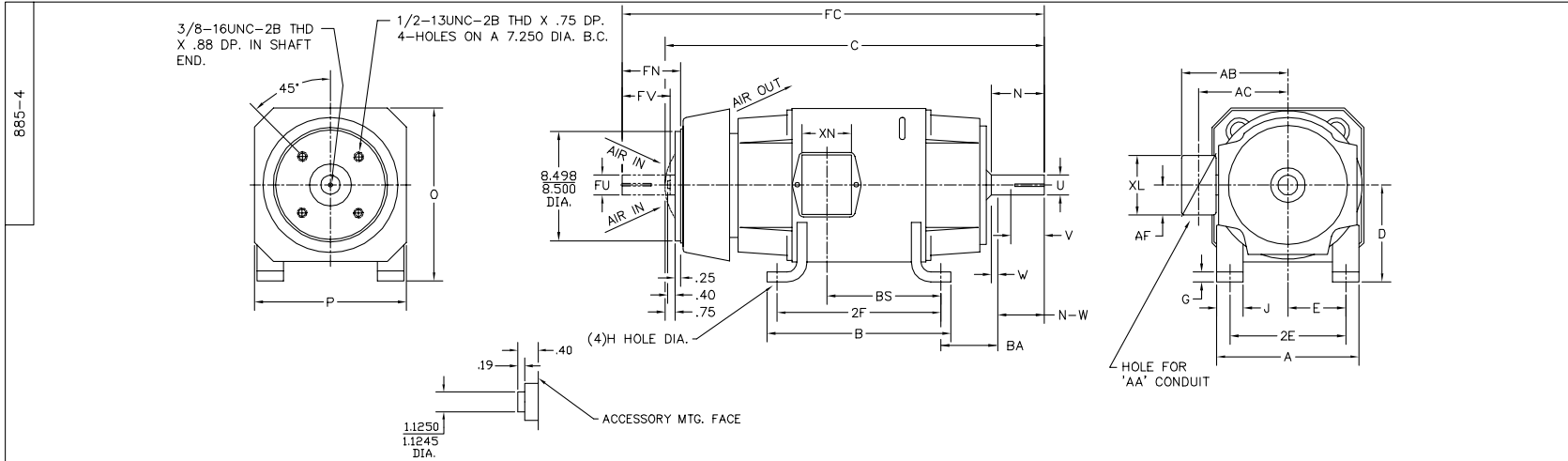
D2520P

20HP, 1750/2300RPM, DC, 328AT, TEFC, F1

Part Detail							
Revision:	E	Status:	PRD/A	Change #:		Proprietary:	No
Type:	DC	Prod. Type:		Elec. Spec:		CD Diagram:	
Enclosure:		Mfg Plant:		Mech. Spec:		Layout:	885-4
Frame:		Mounting:	F1	Poles:	00	Created Date:	04-09-2015
Base:		Rotation:	R	Insulation:		Eff. Date:	10-28-2016
Field Type:		Literature:		Elec. Diagram:		Replaced By:	

Specs			
Frame:	328AT		
Frame Material:	Steel		
Agency Approvals:	CSA		
Bearing Grease Type:	Polyrex EM (-20F +300F)		
Drip Cover:	No Drip Cover		
Feedback Device:	NO FEEDBACK		
Heater Indicator:	No Heater		
Lifting Lugs:	Standard Lifting Lugs		
Mounting Arrangement:	F1		
Shaft Extension Location:	Pulley End		
Shaft Ground Indicator:	No Shaft Grounding		
Shaft Slinger Indicator:	No Slinger		
Motor Standards:	NEMA		

Nameplate NP1734										
CAT.NO.	D2520P			MODEL	T32R8007					
HP	20	RPM	1750/ 2300		FRAME	0328AT				
ARM V	240	ARM A	68.80		WOUND	STR. SHUNT				
FLD V	300	FLD A	1.11-.60							
CONN		OHMS	170.5			CL	F			
ENCL	TEFC	DUTY	CONT			MX AMB	40			
P CODE	D	CTSR				SER.F.	1.0			
S/N			E/S	K0081A A						
	FLD. DATA FOR HIGH VOLTS									
	FLD. VOLTS 150/300									
O.D.E. BRG.	6210	D.E. BRG.	6211		BRUSH	28610-1			QTY	2



FRAME	FOOT MOUNTING						D.E. SHAFT EXTENSION						DRIVE KEY		ACC SHAFT EXTENSION			ACC KEY		FRAME							
	BA	E	2F	G	H	J	N	N-W	U	V	W	KEY-SQ.	KEY-LONG	FN	FU	FV	KEY-SQ.	KEY-LONG	A	B	C	FC	D	O	P		
327AT	5.25	6.25	14.00	.81	.656	3.00	4.40	4.25	2.125	4.00 ³	.15	.500	3.12	3.94	1.875	3.69	.500	2.81	15.88	15.75	37.06	40.57	8.00 ²	15.94	15.88		
328AT	5.25	6.25	16.00	.81	.656	3.00	4.40	4.25	2.125	4.00 ³	.15	.500	3.12	3.94	1.875	3.69	.500	2.81	15.88	17.75	38.94	42.45	8.00 ²	15.94	15.88		
329AT	5.25	6.25	18.00	.81	.656	3.00	4.40	4.25	2.125	4.00 ³	.15	.500	3.12	3.94	1.875	3.69	.500	2.81	15.88	19.75	40.94	44.45	8.00 ²	15.94	15.88		
365AT	5.88	7.00	12.25	.81	.813	3.25	4.94	4.75	2.375	4.50 ³	.19	.625	3.50	4.62	2.125	4.37	.500	3.13	17.75	13.75	37.91	42.62	9.00 ²	17.94	17.88		
366AT	5.88	7.00	14.00	.81	.813	3.25	4.94	4.75	2.375	4.50 ³	.19	.625	3.50	4.62	2.125	4.37	.500	3.13	17.75	15.50	40.10	44.81	9.00 ²	17.94	17.88		
368AT	5.88	7.00	18.00	.81	.813	3.25	4.94	4.75	2.375	4.50 ³	.19	.625	3.50	4.62	2.125	4.37	.500	3.13	17.75	19.50	43.10	47.81	9.00 ²	17.94	17.88		
3610AT	5.88	7.00	22.00	.81	.813	3.25	4.94	4.75	2.375	4.50 ³	.19	.625	3.50	4.62	2.125	4.37	.500	3.13	17.75	23.50	46.10	50.81	9.00 ²	17.94	17.88		
3612AT	5.88	7.00	28.00	.81	.813	3.25	4.94	4.75	2.375	4.50 ³	.19	.625	3.50	4.62	2.125	4.37	.500	3.13	17.75	29.50	49.10	53.81	9.00 ²	17.94	17.88		

FRAME	CONDUIT BOX							ARM APPROX. WK ² LBS.FT. ²	APPROXIMATE WEIGHT
	AA	AB	AC	AF	BS	XL	XN		
327AT	2	12.94	10.32	5.00	11.81	7.88	5.25	8.45	760 ⁵
328AT	2	12.94	10.32	5.00	13.68	7.88	5.25	9.67	835 ⁵
329AT	2	12.94	10.32	5.00	15.68	7.88	5.25	10.97	944 ⁵
365AT	2 1/2	14.06	11.38	5.00	9.06	7.88	5.25	15.61	865 ⁵
366AT	2 1/2	14.06	11.38	5.00	11.25	7.88	5.25	18.27	975 ⁵
368AT	2 1/2	14.06	11.38	5.00	14.25	7.88	5.25	22.21	1135 ⁵
3610AT	3	16.86	13.09	6.53	18.25	11.63	7.76	28.00	1213 ⁵
3612AT	3	16.86	13.09	6.53	24.25	11.63	7.76	31.60	1552 ⁵

- 1) SHAFT DIAMETERS TO 1.500 TOLERANCE +.0000 -.0005
 SHAFT DIAMETERS ABOVE 1.500 TOLERANCE +.0000 -.0010
 SHAFT DIAMETERS TO 1.625 RUNOUT .002 T.I.R. MAX.
 SHAFT DIAMETERS ABOVE 1.625 RUNOUT .003 T.I.R. MAX.
- 2) 'D' DIMENSION TOLERANCE +.000 -.000
- 3) 'V' DIMENSION IS MAX HUB LENGTH ON SHAFT
- 4) CONDUIT BOX CAN BE ROTATED IN 90° STEPS ON ITS OWN AXIS.
- 5) TOTAL WEIGHT OF MOTOR AND FAN COOLED PACKAGE.
- 6) ALL DIMENSIONS NOT NOTED ARE NOMINAL DIMENSIONS CONSULT FACTORY FOR TOLERANCES.

FOR F1 OR F2 CONDUIT BOX LOCATION SEE SALES ORDER

CUSTOMER IS RESPONSIBLE FOR DETERMINING THAT BALDOR'S PRODUCT WILL PERFORM SUITABLY IN THE INTENDED APPLICATION.

REV. DESC: 885-4 RESCALE DRAWING IN BUS	VERSION: 02	TDR: 000000763880
REV. LTR: C	REVISED: 09:37:55 09/07/2012	BY: RGGWT
FILE: \RGG\00019\544		
MTL: -		

BALDOR
 DIM SHEET
 SH 1 of 1

885-4

885-4