

BALDOR® • RELIANCE

Product Information Packet

334B

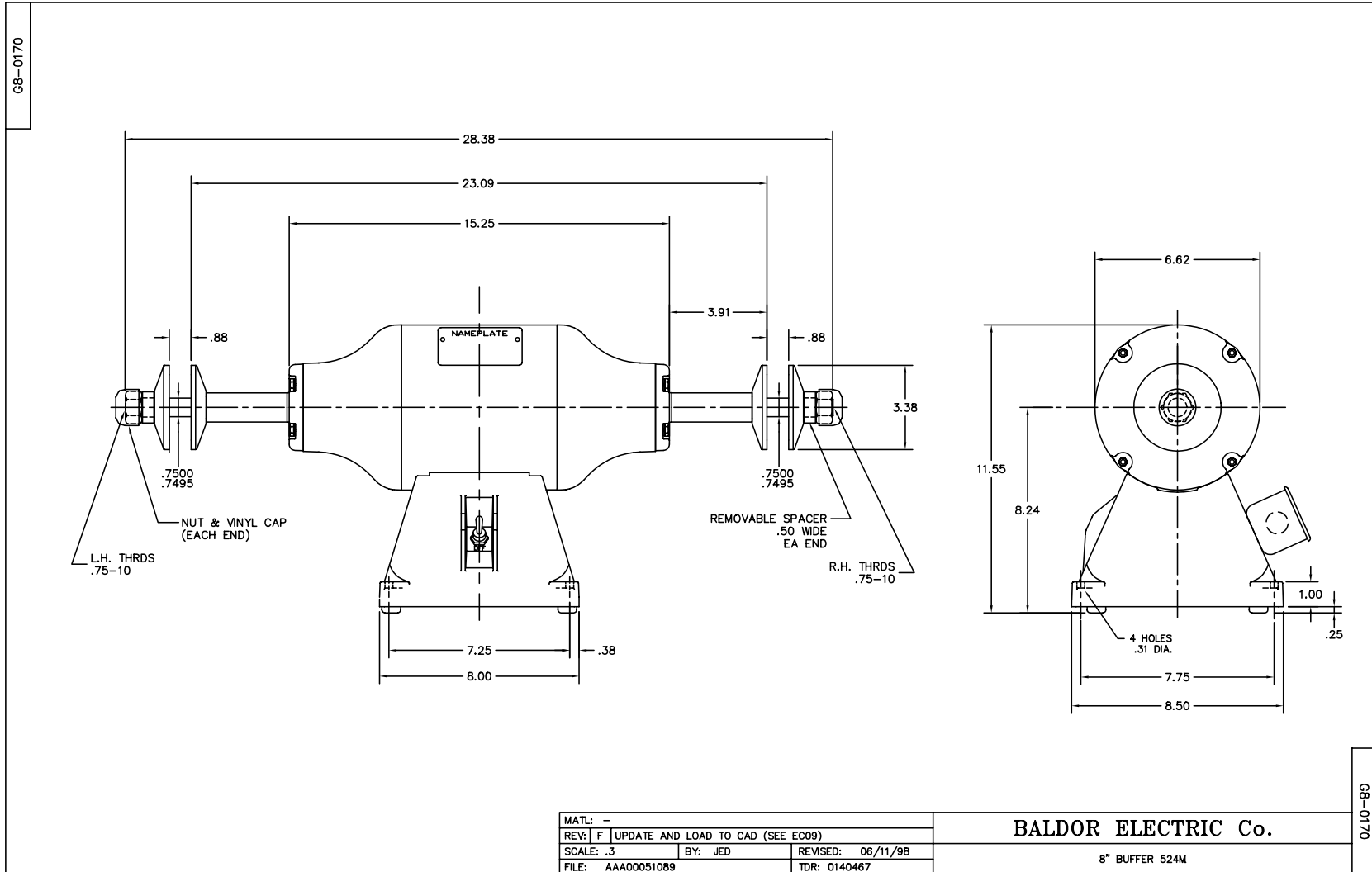
.75HP, 1500/1800RPM, 3PH, 50/60HZ, 3524M

Part Detail							
Revision:	AM	Status:	PRD/A	Change #:		Proprietary:	No
Type:	AC	Elec. Spec:	G8WG0014	CD Diagram:	CD0005	Mfg Plant:	
Mech. Spec:	G8-170	Layout:	G8LY0170	Poles:	04	Created Date:	
Base:	RG	Eff. Date:	06-14-2017	Leads:	9#18 12" LG		Y

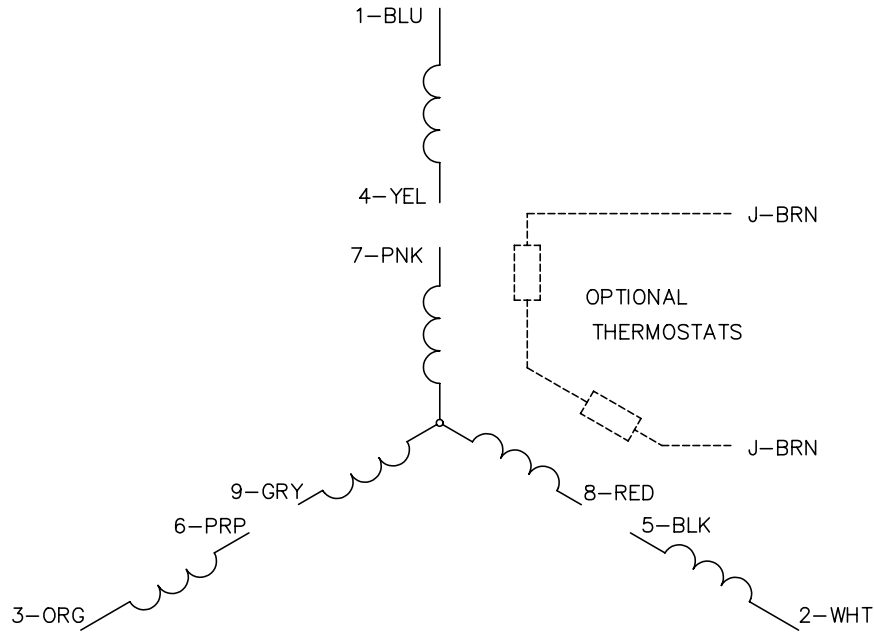
Specs			
Nameplate Output:	.75		
Product Style:	BUFFER		

Nameplate NP3411L	
CAT.NO.	334B
HP	.75
PHASE	3
HZ	50//60
SER.NO	
SPEC.	G8-170-14
BLANK	
	VOLTS 208-230/460
	AMPS 1.4/.7
	RPM 1500//1800

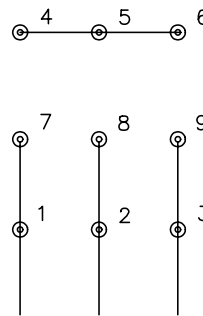
No performance data has been
assigned to this product.



CD0005

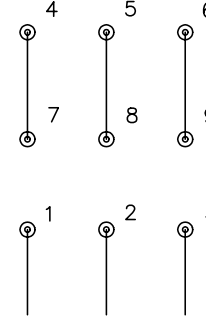


LOW VOLTAGE
(2Y)



LINE

HIGH VOLTAGE
(1Y)



LINE

NOTES:

1. INTERCHANGE ANY TWO LINE LEADS TO REVERSE ROTATION.
2. OPTIONAL THERMOSTATS ARE PROVIDED WHEN SPECIFIED.
3. ACTUAL NUMBER OF INTERNAL PARALLEL CIRCUITS MAY BE A MULTIPLE OF THOSE SHOWN ABOVE.
4. LEAD COLORS ARE OPTIONAL. LEADS MUST ALWAYS BE NUMBERED AS SHOWN.

REV. DESC: REVISE TO SHOW OPTIONAL COLORS			
REV. LTR: E	BY: JLP	REVISED: 01/19/99 10:15	TDR: 0171435
900000		FILE: AAA00005140	MDL: -
		MTL: -	

BALDOR ELECTRIC Co.

3PH, DV, 9 LEADS

CD0005