

BALDOR • RELIANCE

Customer information packet

VXT3152T-210

15HP, 3500RPM, 3PH, 60HZ, 215TC, 0750M, TEFC, F

Class - None

Division - Not Applicable

Specifications

Enclosure	TEFC
Frame	215TC
Frame Material	Iron
Frequency	60.00 Hz
Haz Area Class and Group	None
Haz Area Division	Not Applicable
Motor Letter Type	Three Phase
Output @ Frequency	15.000 HP @ 60 HZ
Phase	3
Synchronous Speed @ Frequency	3600 RPM @ 60 HZ
Voltage @ Frequency	460.0 V @ 60 HZ 208.0 V @ 60 HZ 230.0 V @ 60 HZ
Agency Approvals	UR CCSA US NEMA_PREMIUM CSA EEV CSA
Ambient Temperature	40 °C
Auxillary Box	No Auxillary Box
Auxillary Box Lead Termination	None
Base Indicator	No Mounting
Bearing Grease Type	Polyrex EM (-20F +300F)
Blower	None
Constant Torque Speed Range	15
Current @ Voltage	16.900 A @ 460.0 V 33.800 A @ 230.0 V 36.000 A @ 208.0 V
Design Code	A
Drip Cover	No Drip Cover
Duty Rating	CONT
Efficiency @ 100% Load	91.0 %

Part detail

Revision	D
Type	AC
Mech. spec.	
Base	
Status	PRD/A
Elec. spec.	07WGR536
Layout	07LYL289
Eff. date	09-19-2022
CD Diagram	CD0005
Poles	02
Leads	9#14
Proprietary	False
Created date	12-02-2020

Electrically Isolated Bearing	Not Electrically Isolated
Feedback Device	NO FEEDBACK
Haz Area Temp Code	T3C
Heater Indicator	No Heater
High Voltage Full Load Amps	16.9 a
Insulation Class	F
Inverter Code	Inverter Duty
IP Rating	NONE
KVA Code	H
Lifting Lugs	Standard Lifting Lugs
Locked Bearing Indicator	Locked Bearing
Motor Lead Termination	Flying Leads
Motor Standards	NEMA
Motor Type	0750M
Mounting Arrangement	F1
Number of Poles	2
Overall Length	19.20 IN
Power Factor	91
Product Family	General Purpose
Pulley Face Code	C-Face
Rodent Screen	None
Service Factor	1.15
Shaft Diameter	1.375 IN
Shaft Ground Indicator	No Shaft Grounding
Shaft Rotation	Reversible
Speed	3500 rpm
Speed Code	Single Speed
Starting Method	Direct on line
Thermal Device - Bearing	None
Thermal Device - Winding	None
Vibration Sensor Indicator	No Vibration Sensor
Winding Thermal 1	None
Winding Thermal 2	None

Nameplate

NP4225L										
CAT.NO.	VXT3152T-210					I.P.	54			
SPEC.	07-0000-0932					ENCL	TEFC			
FRAME	215TC		H.P.	15						
VOLTS	208-230/460		P.F.	91						
F.L. AMPS	36-33.8/16.9		RATING	40C AMB-CONT						
R.P.M.	3500		USABLE AT 208V			N/A				
HZ.	60		PH.	3		CLASS	F			
SER.F.	1.15		DES.	A		SL HZ	1.8			
NEMA NOM. EFF.	91		WK2	0.456						
DE	6307		ODE	6206						
MAG. CUR.	9.2/4.6									
INV TYPE	PWM		CHP	60		TO	90			
CT	15 TO 60		VT	15 TO 60						
CC	010A		SN							
USABLE AT 50 HZ 12.5 HP										
190/380V 34/17A										

AC Induction Motor Performance Data

Record # 51368

Typical performance - not guaranteed values

Winding: 07WGR536-R001		Type: 0750M	Enclosure: TEFC	
Nameplate Data			460 V, 60 Hz: High Voltage Connection	
Rated Output (HP)	15	Full Load Torque	22.6 LB-FT	
Volts	208-230/460	Start Configuration	direct on line	
Full Load Amps	36-32.2/16.6	Breakdown Torque	87.7 LB-FT	
R.P.M.	3500	Pull-up Torque	29.6 LB-FT	
Hz	60 Phase	Locked-rotor Torque	43.2 LB-FT	
NEMA Design Code	A KVA Code	Starting Current	133 A	
Service Factor (S.F.)	1.15	No-load Current	4.61 A	
NEMA Nom. Eff.	91 Power Factor	Line-line Res. @ 25°C	0.54448 Ω	
Rating - Duty	40C AMB-CONT	Temp. Rise @ Rated Load	66°C	
S.F. Amps		Temp. Rise @ S.F. Load	84°C	

Load Characteristics 460 V, 60 Hz, 15 HP

% of Rated Load	25	50	75	100	125	150	S.F.
Power Factor	65	83	88	91	92	91	92
Efficiency	90.2	92.6	92.5	91.6	90.2	88.6	90.8
Speed	3572	3546.2	3519.8	3490.6	3457.2	3421.4	3471
Line amperes	6.18	9.3	12.9	16.9	21.4	26	19.6

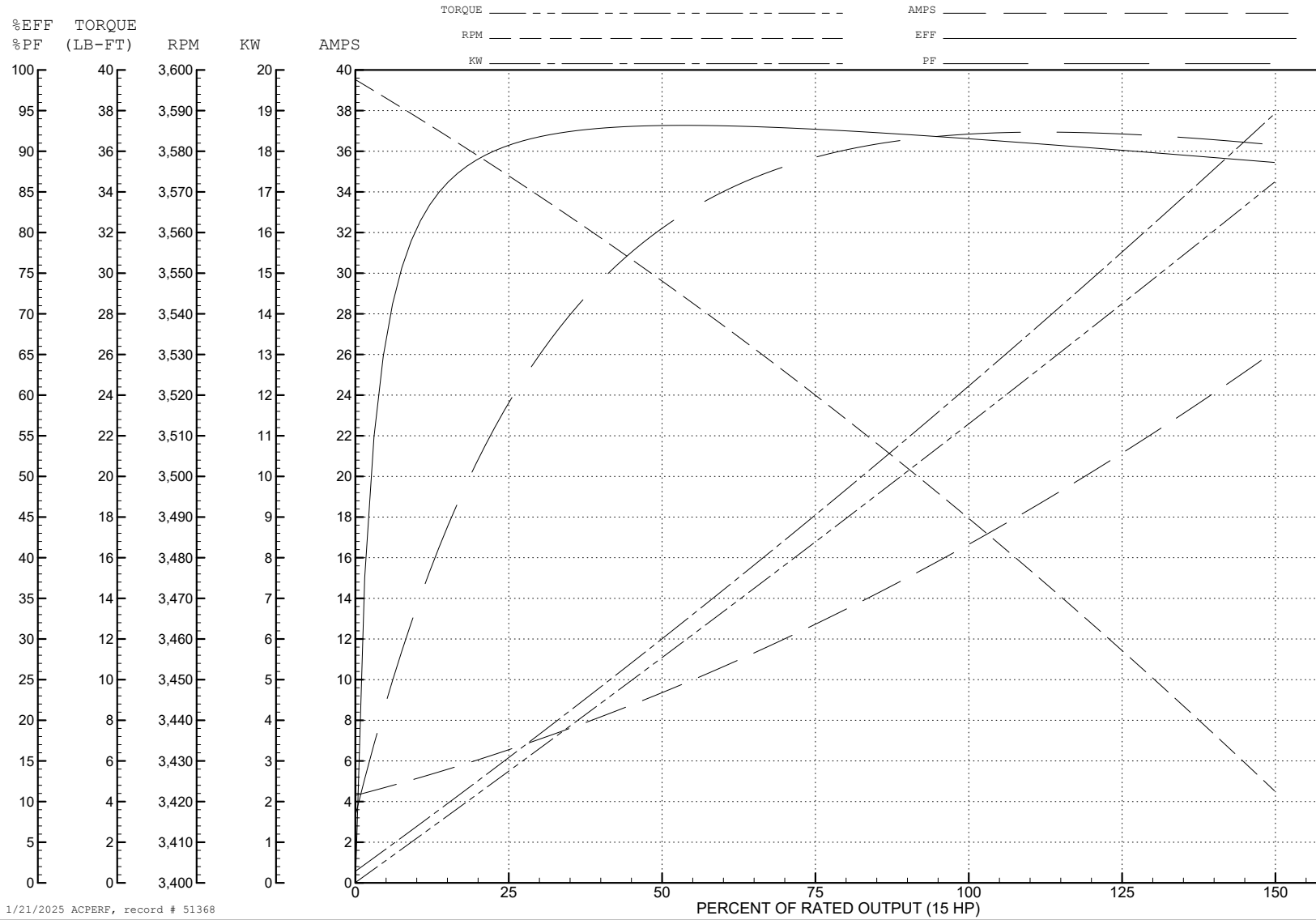
ABB Motors and Mechanical Inc.

WINDING # 07WGR536

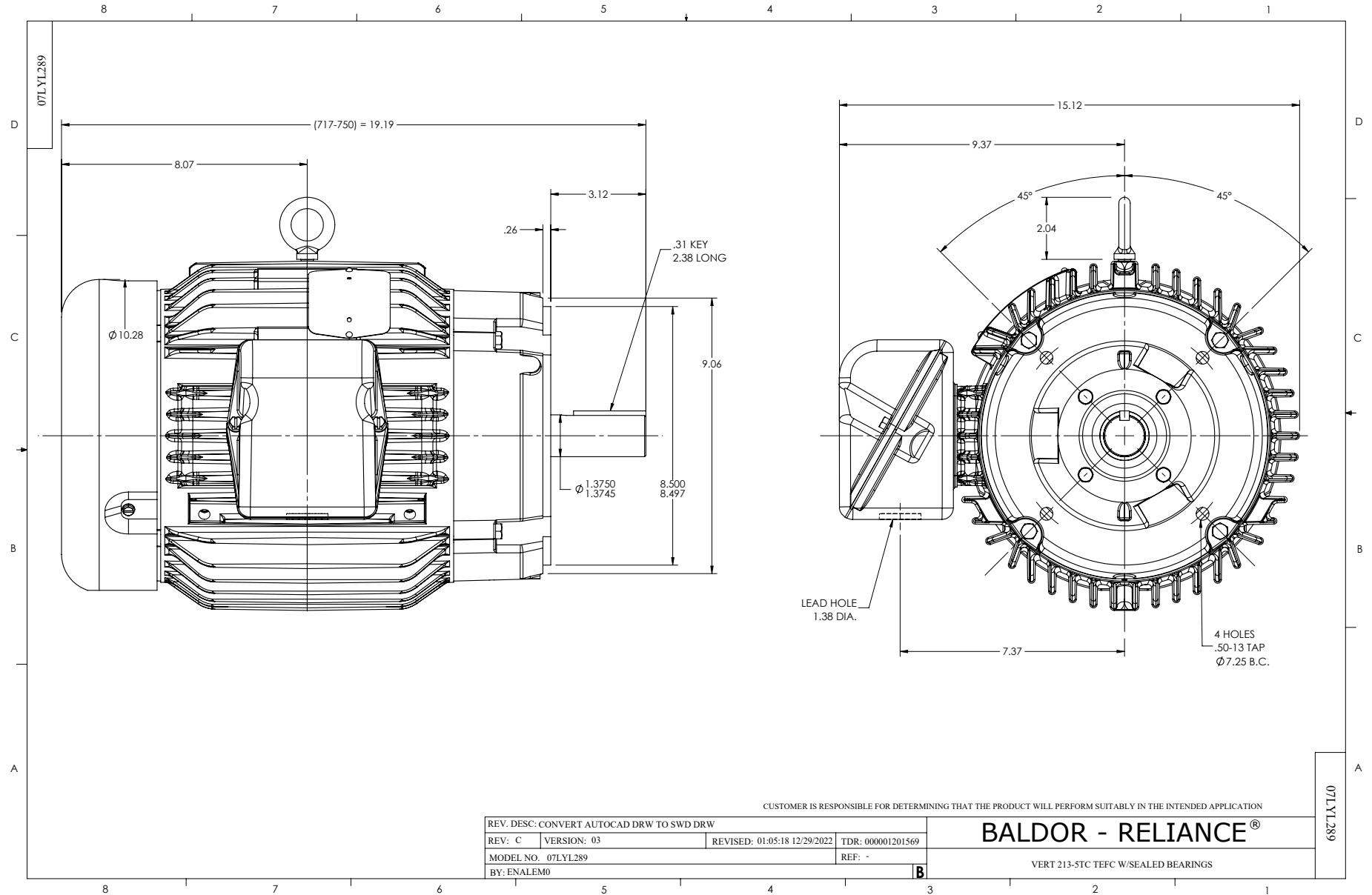
Typical performance - not guaranteed values.

15 HP 3 PH 60 HZ 3500 RPM 460 V 0750M

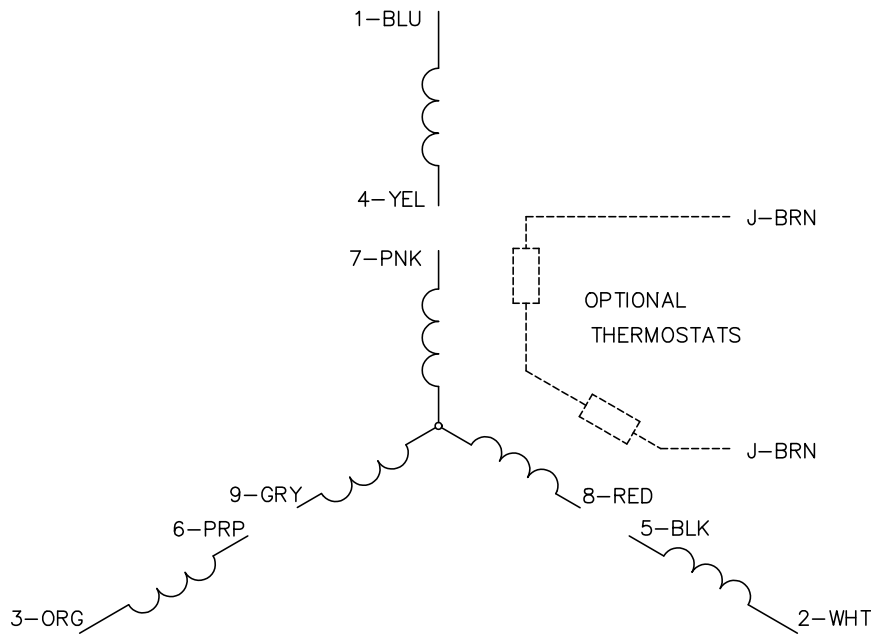
TORQUES (LB-FT): PO=87.7 PU=29.6 LR=43.2 LRA=133



1/21/2025 ACPERF, record # 51368



CD0005



LOW VOLTAGE
(2Y)



LINE

HIGH VOLTAGE
(1Y)



LINE

NOTES:

1. INTERCHANGE ANY TWO LINE LEADS TO REVERSE ROTATION.
2. OPTIONAL THERMOSTATS ARE PROVIDED WHEN SPECIFIED.
3. ACTUAL NUMBER OF INTERNAL PARALLEL CIRCUITS MAY BE A MULTIPLE OF THOSE SHOWN ABOVE.
4. LEAD COLORS ARE OPTIONAL. LEADS MUST ALWAYS BE NUMBERED AS SHOWN.

CD0005

REV. DESC: REVISE TO SHOW OPTIONAL COLORS			
REV. LTR: E	BY: JLP	REVISED: 01/19/99 10:15	TDR: 0171435
S00000		FILE: AAA00005140	MDL: -
		MTL: -	

BALDOR ELECTRIC Co.

3PH, DV, 9 LEADS