



Customer information packet

VXT3052T

5HP, 3490RPM, 3PH, 60HZ, 184TC, 0632M, TEFC, F1

Class - CLI GP A,B,C,D

Division - Division II

Specifications

Enclosure	TEFC
Frame	184TC
Frame Material	Iron
Frequency	60.00 Hz
Haz Area Class and Group	CLI GP A,B,C,D
Haz Area Division	Division II
Motor Letter Type	Three Phase
Output @ Frequency	5.000 HP @ 60 HZ
Phase	3
Synchronous Speed @ Frequency	3600 RPM @ 60 HZ
Voltage @ Frequency	460.0 V @ 60 HZ 208.0 V @ 60 HZ 230.0 V @ 60 HZ
Agency Approvals	UR CCSA US NEMA_PREMIUM NEMA PREMIUM CSA EEV
Ambient Temperature	40 °C
Auxillary Box	No Auxillary Box
Auxillary Box Lead Termination	None
Base Indicator	No Mounting
Bearing Grease Type	Polyrex EM (-20F +300F)
Blower	None
Constant Torque Speed Range	6
Current @ Voltage	11.400 A @ 230.0 V 12.500 A @ 208.0 V 5.700 A @ 460.0 V
Design Code	A
Drip Cover	No Drip Cover
Duty Rating	CONT
Efficiency @ 100% Load	90.2 %

Part detail

Revision	C
Type	AC
Mech. spec.	
Base	
Status	PRD/A
Elec. spec.	06WGW730
Layout	06LYH799
Eff. date	06-28-2024
CD Diagram	CD0005
Poles	02
Leads	9#16
Proprietary	False
Created date	11-10-2020

Electrically Isolated Bearing	Not Electrically Isolated
Feedback Device	NO FEEDBACK
Haz Area Temp Code	T3C
Heater Indicator	No Heater
High Voltage Full Load Amps	5.7 a
Insulation Class	F
Inverter Code	Inverter Duty
IP Rating	NONE
KVA Code	M
Lifting Lugs	Standard Lifting Lugs
Locked Bearing Indicator	Locked Bearing
Motor Lead Termination	Flying Leads
Motor Standards	NEMA
Motor Type	0632M
Mounting Arrangement	F1
Number of Poles	2
Overall Length	15.98 IN
Power Factor	90
Product Family	General Purpose
Pulley Face Code	C-Face
Rodent Screen	None
Service Factor	1.15
Shaft Diameter	1.125 IN
Shaft Ground Indicator	No Shaft Grounding
Shaft Rotation	Reversible
Speed	3490 rpm
Speed Code	Single Speed
Starting Method	Direct on line
Thermal Device - Bearing	None
Thermal Device - Winding	None
Vibration Sensor Indicator	No Vibration Sensor
Winding Thermal 1	None
Winding Thermal 2	None

Nameplate

NP4163L									
CAT.NO.	VXT3052T				I.P.	54			
SPEC.	06-0000-0788				ENCL	TEFC			
FRAME	184TC		H.P.	5					
VOLTS	208-230/460		P.F.	90					
F.L. AMPS	12.5-11.4/5.7		RATING	40C AMB-CONT					
R.P.M.	3490								
HZ.	60		PH.	3		CLASS	F		
SER.F.	1.15		DES.	A		SL HZ	1.8		
NEMA NOM. EFF.	90.2		WK2	0.15					
DE	6206		ODE	6205					
MAG. CUR.	3.4-4.2/2.1								
INV TYPE	PWM	CHP	60	TO	90	T. CODE	T3C		
CT	6	TO	60	VT	6	TO	60		
CC	010A		SN						
	USABLE AT 50 HZ 3HP 190/380V								
	8.8/4.4A								

AC Induction Motor Performance Data

Record # 34771

Typical performance - not guaranteed values

Winding: 06WGW730-R020		Type: 0632M	Enclosure: XPFC	
Nameplate Data			460 V, 60 Hz: High Voltage Connection	
Rated Output (HP)	5	Full Load Torque	7.54 LB-FT	
Volts	230/460	Start Configuration	direct on line	
Full Load Amps	11.4/5.7	Breakdown Torque	40.1 LB-FT	
R.P.M.	3490	Pull-up Torque	30.6 LB-FT	
Hz	60 Phase	Locked-rotor Torque	36.9 LB-FT	
NEMA Design Code	A KVA Code	Starting Current	64.8 A	
Service Factor (S.F.)	1.15	No-load Current	2.08 A	
NEMA Nom. Eff.	90.2 Power Factor	Line-line Res. @ 25°C	1.93 Ω	
Rating - Duty	40C AMB-CONT	Temp. Rise @ Rated Load	51°C	
S.F. Amps		Temp. Rise @ S.F. Load	64°C	
		Locked-rotor Power Factor	45	
		Rotor inertia	0.143 LB-FT ²	

Load Characteristics 460 V, 60 Hz, 5 HP

% of Rated Load	25	50	75	100	125	150	S.F.
Power Factor	55	76	85	90	93	93	92
Efficiency	84.4	89.7	90.8	90.7	90	89	90.3
Speed	3570	3544	3517	3489	3458	3426	3470
Line amperes	2.54	3.47	4.6	5.76	7.03	8.46	6.52

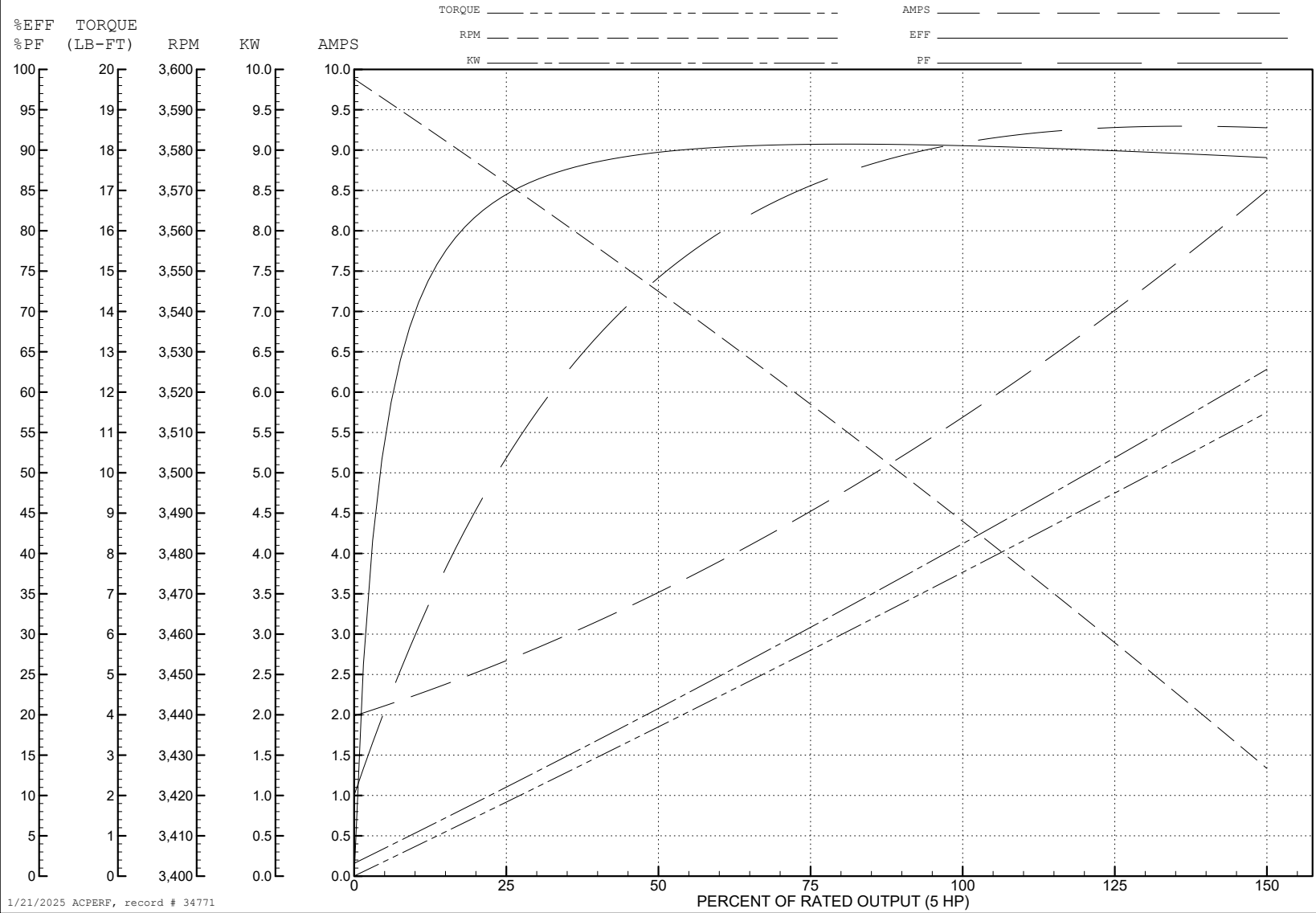
ABB Motors and Mechanical Inc.

WINDING # 06WGW730

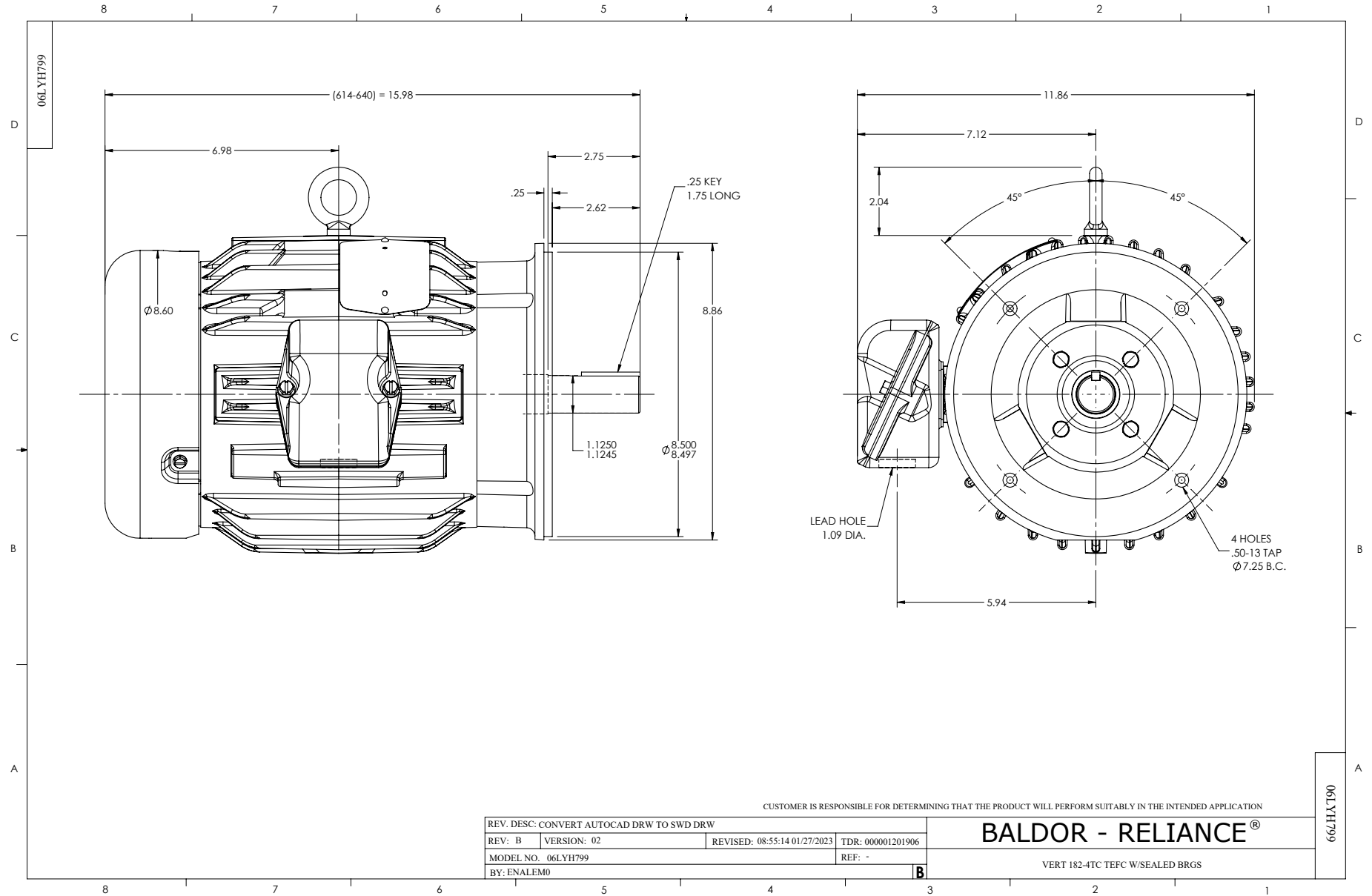
Typical performance - not guaranteed values.

5 HP 3 PH 60 HZ 3490 RPM 460 V 0632M

TORQUES (LB-FT): PO=40.1 PU=30.6 LR=36.9 LRA=64.8



1/21/2025 ACPERF, record # 34771



CD0005

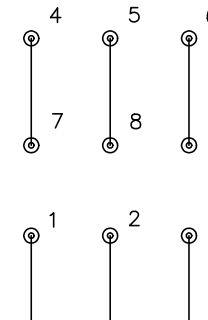


LOW VOLTAGE
(2Y)



LINE

HIGH VOLTAGE
(1Y)



LINE

NOTES:

1. INTERCHANGE ANY TWO LINE LEADS TO REVERSE ROTATION.
2. OPTIONAL THERMOSTATS ARE PROVIDED WHEN SPECIFIED.
3. ACTUAL NUMBER OF INTERNAL PARALLEL CIRCUITS MAY BE A MULTIPLE OF THOSE SHOWN ABOVE.
4. LEAD COLORS ARE OPTIONAL. LEADS MUST ALWAYS BE NUMBERED AS SHOWN.

CD0005

REV. DESC: REVISE TO SHOW OPTIONAL COLORS			
REV. LTR: E	BY: JLP	REVISED: 01/19/99 10:15	TDR: 0171435
S00000		FILE: AAA00005140	MDL: -
		MTL: -	

BALDOR ELECTRIC Co.

3PH, DV, 9 LEADS