

**BALDOR • RELIANCE**

---

# Customer information packet

## VXL051542A

1.5HP, 1725RPM, 1PH, 60HZ, 56C, 3546L, XPFC, F1  
Class - CLI GP D; CLII GP F,G  
Division - Division I

## Specifications

Enclosure	XPFC
Frame	56C
Frame Material	Steel
Frequency	60.00 Hz
Haz Area Class and Group	CLI GP D; CLII GP F,G
Haz Area Division	Division I
Motor Letter Type	Cap Start, Induction Run
Output @ Frequency	1.500 HP @ 60 HZ
Phase	1
Synchronous Speed @ Frequency	1800 RPM @ 60 HZ
Voltage @ Frequency	115.0 V @ 60 HZ 230.0 V @ 60 HZ
Agency Approvals	CSA UL
Ambient Temperature	40 °C
Auxillary Box	No Auxillary Box
Auxillary Box Lead Termination	None
Base Indicator	No Mounting
Bearing Grease Type	Polyrex EM (-20F +300F)
Blower	None
Current @ Voltage	16.000 A @ 115.0 V 8.000 A @ 230.0 V
Design Code	L
Drip Cover	No Drip Cover
Duty Rating	CONT
Efficiency @ 100% Load	75.0 %
Electrically Isolated Bearing	Not Electrically Isolated
Feedback Device	NO FEEDBACK
Haz Area Temp Code	T2C
Heater Indicator	No Heater
High Voltage Full Load Amps	8.0 a
Insulation Class	B

## Part detail

Revision	G
Type	AC
Mech. spec.	
Base	
Status	PRD/A
Elec. spec.	35WGX140
Layout	35LYE371
Eff. date	05-01-2024
CD Diagram	CD0008
Poles	04
Leads	3#16,3#18 B&J,1#14 #4TH
Proprietary	False
Created date	03-31-2021

<b>Inverter Code</b>	Not Inverter
<b>IP Rating</b>	NONE
<b>KVA Code</b>	J
<b>Lifting Lugs</b>	No Lifting Lugs
<b>Locked Bearing Indicator</b>	Locked Bearing
<b>Motor Lead Termination</b>	Flying Leads
<b>Motor Standards</b>	NEMA
<b>Motor Type</b>	3546L
<b>Mounting Arrangement</b>	F1
<b>Number of Poles</b>	4
<b>Overall Length</b>	17.40 IN
<b>Power Factor</b>	78
<b>Product Family</b>	General Purpose
<b>Pulley Face Code</b>	C-Face
<b>Rodent Screen</b>	None
<b>Service Factor</b>	1.00
<b>Shaft Diameter</b>	0.625 IN
<b>Shaft Ground Indicator</b>	No Shaft Grounding
<b>Shaft Rotation</b>	Reversible
<b>Speed</b>	1725 rpm
<b>Speed Code</b>	Single Speed
<b>Starting Method</b>	Direct on line
<b>Thermal Device - Bearing</b>	None
<b>Thermal Device - Winding</b>	Normally Closed Thermostat
<b>Vibration Sensor Indicator</b>	No Vibration Sensor
<b>Winding Thermal 1</b>	None
<b>Winding Thermal 1 Location</b>	EP
<b>Winding Thermal 2</b>	None

**Nameplate**

NP0016XPSL					
<b>NO.</b>		<b>CC</b>			
<b>SER. #</b>					
<b>SPEC</b>	35-0000-1102				
<b>CAT.NO.</b>	VXL051542A				
<b>H.P.</b>	1.5	<b>T. CODE</b>	T3C		
<b>VOLTS</b>	115/230				
<b>AMPS</b>	16/8				
<b>R.P.M.</b>	1725				
<b>HZ</b>	60	<b>PH</b>	1	<b>CLASS</b>	B
<b>SER.F.</b>	1.00	<b>DES</b>	L	<b>CODE</b>	J
<b>RATING</b>	40C AMB-CONT				
<b>FRAME</b>	56C	<b>NEMA NOM. EFF</b>	75		
	<b>PF</b>	78			
<b>BLANK</b>	NEMA MG-1 PART 5, IP54				

**AC Induction Motor Performance Data**

Record # 9948

Typical performance - not guaranteed values

<b>Winding:</b> 35WGX140-R001		<b>Type:</b> 3546L		<b>Enclosure:</b> XPFC	
<b>Nameplate Data</b>			<b>230 V, 60 Hz: High Voltage Connection</b>		
<b>Rated Output (HP)</b>	1.5		<b>Full Load Torque</b>	4.5 LB-FT	
<b>Volts</b>	115/230		<b>Start Configuration</b>	direct on line	
<b>Full Load Amps</b>	16/8		<b>Breakdown Torque</b>	11 LB-FT	
<b>R.P.M.</b>	1725		<b>Pull-up Torque</b>	6.5 LB-FT	
<b>Hz</b>	<b>60 Phase</b>	1	<b>Locked-rotor Torque</b>	8.5 LB-FT	
<b>NEMA Design Code</b>	<b>L KVA Code</b>	J	<b>Starting Current</b>	47 A	
<b>Service Factor (S.F.)</b>	1		<b>No-load Current</b>	4.55 A	
<b>NEMA Nom. Eff.</b>	<b>75 Power Factor</b>	78	<b>Line-line Res. @ 25°C</b>	1.42 Ω A Ph 1.4 Ω B Ph	
<b>Rating - Duty</b>	40C AMB-CONT		<b>Temp. Rise @ Rated Load</b>	77°C	

**Load Characteristics 230 V, 60 Hz, 1.5 HP**

<b>% of Rated Load</b>	<b>25</b>	<b>50</b>	<b>75</b>	<b>100</b>	<b>125</b>	<b>150</b>
<b>Power Factor</b>	41	59	72	79	83	86
<b>Efficiency</b>	61.7	73.9	77.8	78.6	77.9	75.9
<b>Speed</b>	1786	1774	1761	1746	1729	1708
<b>Line amperes</b>	4.85	5.55	6.55	7.85	9.4	11.3

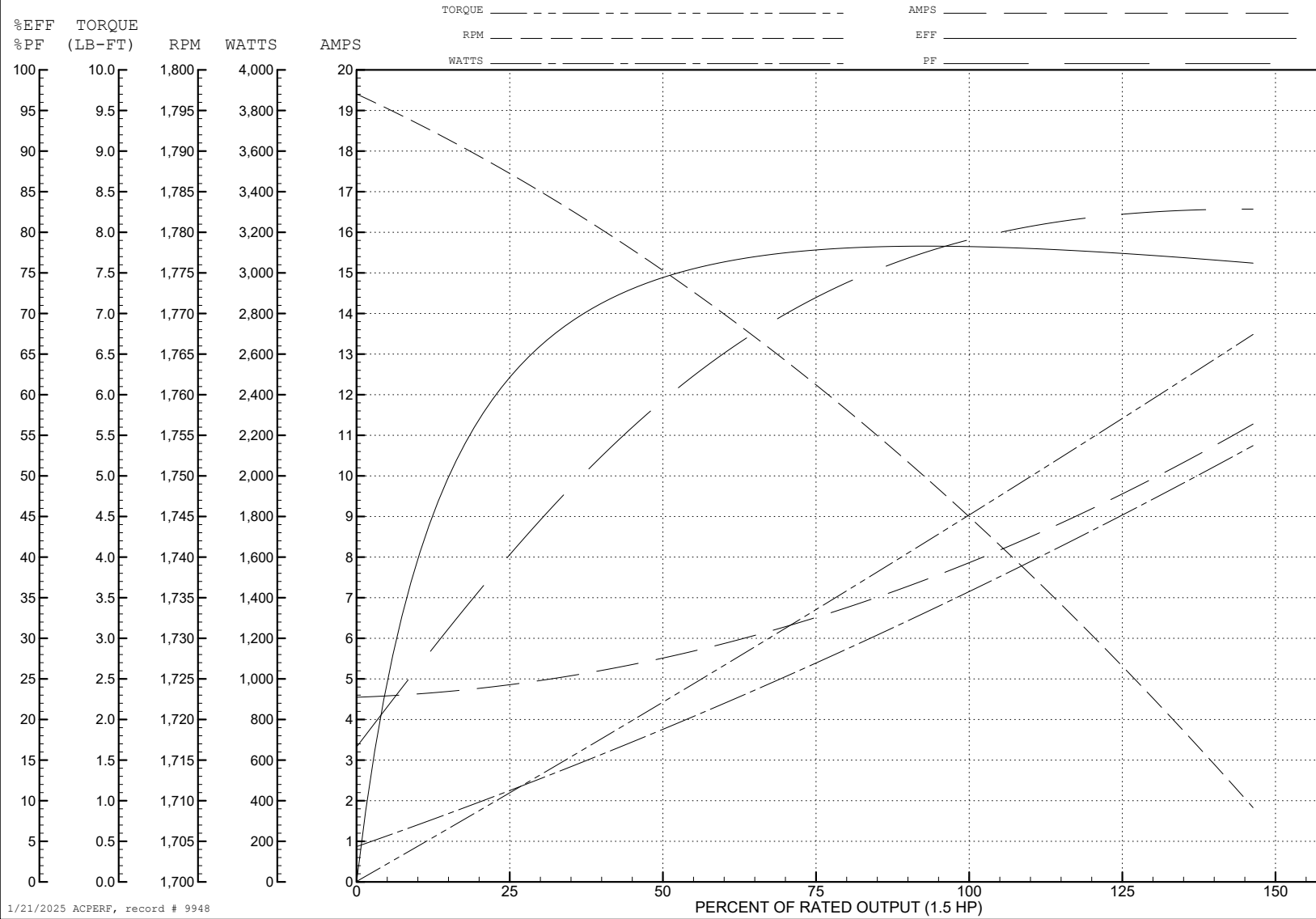
ABB Motors and Mechanical Inc.

WINDING # 35WGx140

Typical performance - not guaranteed values.

1.5 HP 1 PH 60 HZ 1725 RPM 230 V 3546L

TORQUES (LB-FT): PO=11 PU=6.5 LR=8.5 LRA=47



1/21/2025 ACPERF, record # 9948

**AC Induction Motor Performance Data**

Record # 34831

Typical performance - not guaranteed values

Winding: 35WGX140-R002		Type: 3546L	Enclosure: XPFC		
<b>Nameplate Data</b>			<b>230 V, 60 Hz: High Voltage Connection</b>		
Rated Output (HP)	1.5	Full Load Torque	4.5 LB-FT		
Volts	115/230	Start Configuration	direct on line		
Full Load Amps	16/8	Breakdown Torque	11 LB-FT		
R.P.M.	1725	Pull-up Torque	6.5 LB-FT		
Hz	60 Phase	1	Locked-rotor Torque	8.5 LB-FT	
NEMA Design Code	L	KVA Code	J	Starting Current	47 A
Service Factor (S.F.)			1	No-load Current	4.55 A
NEMA Nom. Eff.	75	Power Factor	78	Line-line Res. @ 25°C	1.42 Ω A Ph 1.4 Ω B Ph
Rating - Duty		40C AMB-CONT		Temp. Rise @ Rated Load	77°C

**Load Characteristics 230 V, 60 Hz, 1.5 HP**

% of Rated Load	25	50	75	100	125	150
Power Factor	41	59	72	79	83	86
Efficiency	61.7	73.9	77.8	78.6	77.9	75.9
Speed	1786	1774	1761	1746	1729	1708
Line amperes	4.85	5.55	6.55	7.85	9.4	11.3

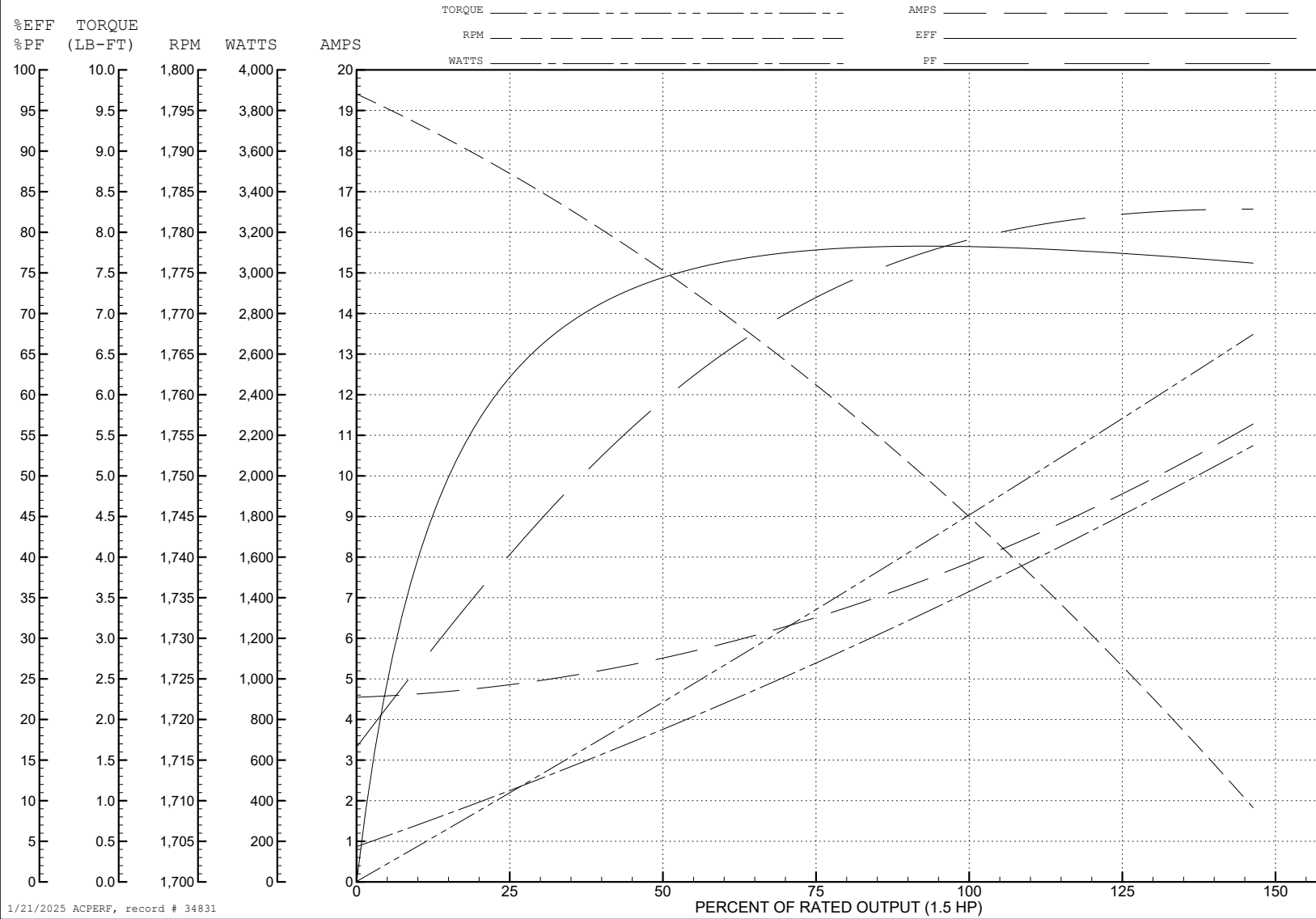
ABB Motors and Mechanical Inc.

WINDING # 35WGx140

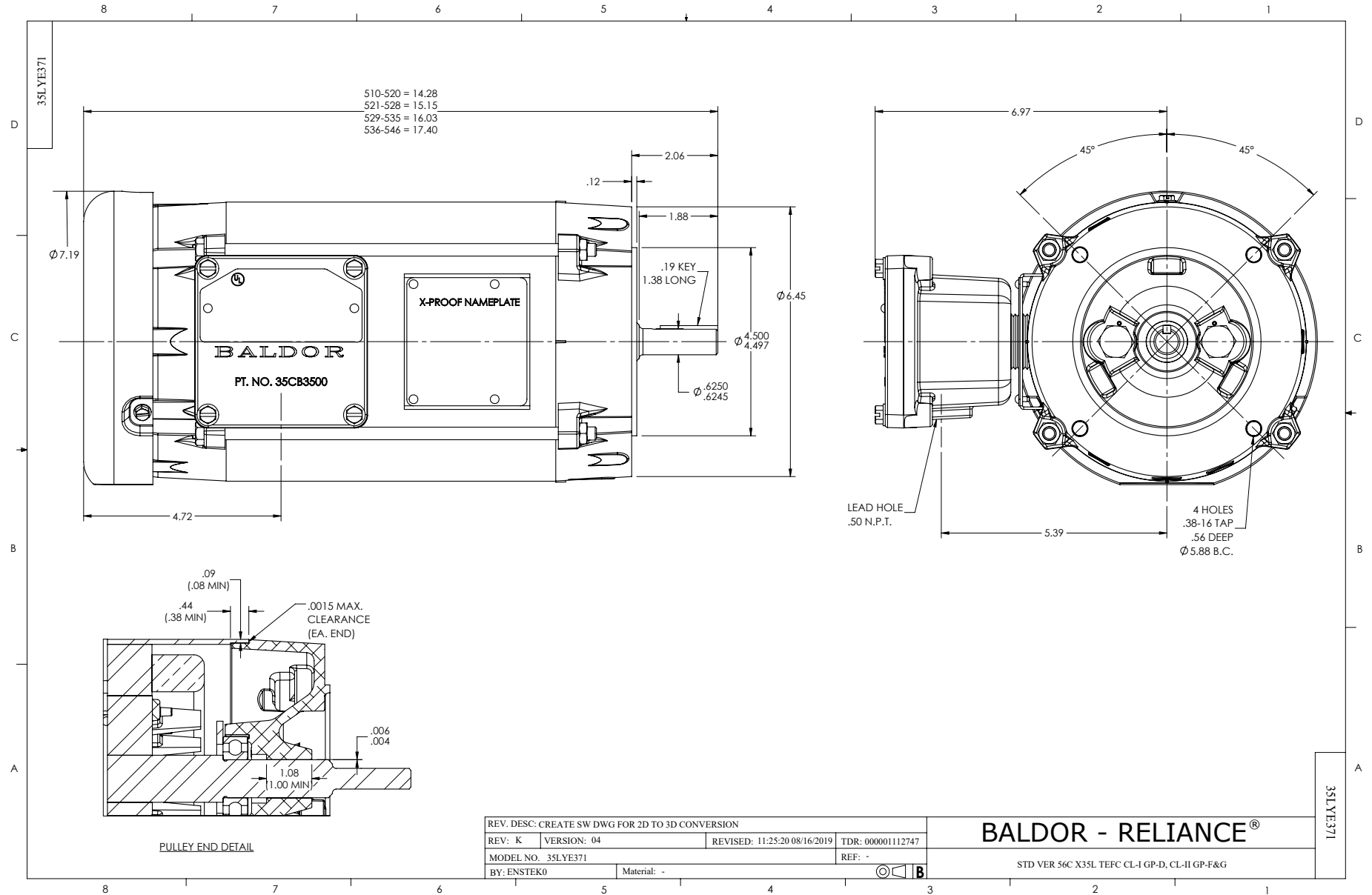
Typical performance - not guaranteed values.

1.5 HP 1 PH 60 HZ 1725 RPM 230 V 3546L

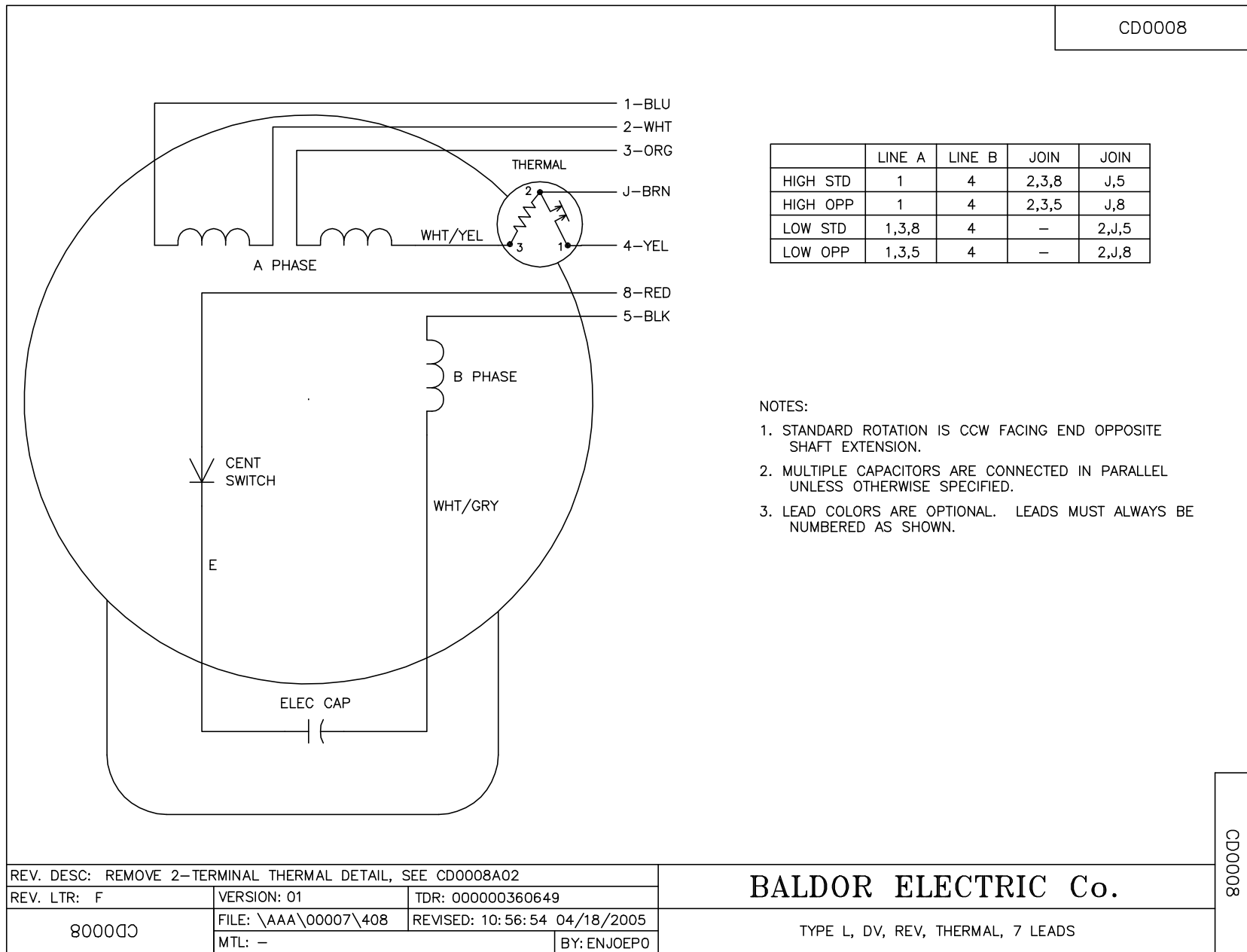
TORQUES (LB-FT): PO=11 PU=6.5 LR=8.5 LRA=47



1/21/2025 ACPERF, record # 34831



CD0008



NOTES:

1. STANDARD ROTATION IS CCW FACING END OPPOSITE SHAFT EXTENSION.
2. MULTIPLE CAPACITORS ARE CONNECTED IN PARALLEL UNLESS OTHERWISE SPECIFIED.
3. LEAD COLORS ARE OPTIONAL. LEADS MUST ALWAYS BE NUMBERED AS SHOWN.

REV. DESC: REMOVE 2-TERMINAL THERMAL DETAIL, SEE CD0008A02		
REV. LTR: F	VERSION: 01	TDR: 000000360649
800000	FILE: \AAA\00007\408	REVISED: 10:56:54 04/18/2005
	MTL: -	BY: ENJOEPO

BALDOR ELECTRIC Co.

TYPE L, DV, REV, THERMAL, 7 LEADS

CD0008