

BALDOR® • ***RELIANCE***

Product Information Packet

IDVSNM3542

.75HP,1750RPM,3PH,60HZ,56C,3516M,TENV,F1

Part Detail							
Revision:	Q	Status:	PRD/A	Change #:		Proprietary:	No
Type:	AC	Elec. Spec:	35WGP667	CD Diagram:	CD0005	Mfg Plant:	
Mech. Spec:	35T995	Layout:	35LYT995	Poles:	04	Created Date:	01-14-2008
Base:	RG	Eff. Date:	03-27-2017	Leads:	9#18		

Specs			
Catalog Number:	IDVSNM3542	Insulation Class:	F
Enclosure:	TENV	Inverter Code:	Inverter Duty
Frame:	56C	KVA Code:	M
Frame Material:	Steel	Lifting Lugs:	No Lifting Lugs
Output @ Frequency:	.750 HP @ 60 HZ	Locked Bearing Indicator:	Locked Bearing
Synchronous Speed @ Frequency:	1800 RPM @ 60 HZ	Motor Lead Quantity/Wire Size:	9 @ 18 AWG
Voltage @ Frequency:	460.0 V @ 60 HZ	Motor Lead Exit:	Ko Box
	230.0 V @ 60 HZ	Motor Lead Termination:	Flying Leads
XP Class and Group:	None	Motor Type:	3516M
XP Division:	Not Applicable	Mounting Arrangement:	F1
Agency Approvals:	CSA	Power Factor:	73
	UR	Product Family:	General Purpose
Auxillary Box:	No Auxillary Box	Pulley End Bearing Type:	Ball
Auxillary Box Lead Termination:	None	Pulley Face Code:	C-Face
Base Indicator:	Rigid	Pulley Shaft Indicator:	Standard
Bearing Grease Type:	Polyrex EM (-20F +300F)	Rodent Screen:	None
Blower:	None	RoHS Status:	ROHS COMPLIANT
Current @ Voltage:	1.150 A @ 460.0 V	Shaft Extension Location:	Pulley End

	2.300 A @ 230.0 V	Shaft Ground Indicator:	No Shaft Grounding
	2.500 A @ 208.0 V	Shaft Rotation:	Reversible
Design Code:	B	Shaft Slinger Indicator:	No Slinger
Drip Cover:	No Drip Cover	Speed Code:	Single Speed
Duty Rating:	CONT	Motor Standards:	NEMA
Electrically Isolated Bearing:	Not Electrically Isolated	Starting Method:	Direct on line
Feedback Device:	NO FEEDBACK	Thermal Device - Bearing:	None
Front Face Code:	Encoder/Feedback Device	Thermal Device - Winding:	Normally Closed Thermostat
Front Shaft Indicator:	None	Vibration Sensor Indicator:	No Vibration Sensor
Heater Indicator:	No Heater	Winding Thermal 1:	None
		Winding Thermal 2:	None

Nameplate NP3301L	
CAT NO	IDVSNM3542
SPEC.	35T995P667G1
FRAME	56C HP .75 TE
VOLTS	230/460
MAG CUR	1.5/.75 FLA 2.3/1.15
RPM	1750 RPM MAX 6000
HZ	60 PH 3 CLASS F
SER.F.	1.00 SL HZ 1.7
NEMA-NOM-EFF	84 WK2 0.946
RATING	40C AMB-CONT
DE BRG	6205 ODE BRG 6203
CC	SN

Parts List		
Part Number	Description	Quantity
SA167229	SA 35T995P667G1	1.000 EA
RA155568	RA 35T995P667G1	1.000 EA
NS2512A01	INSULATOR, CONDUIT BOX X	1.000 EA
35CB3007	35 CB CASTING W/.88 DIA. LEAD HOLE	1.000 EA
36GS1000SP	GASKET-CONDUIT BOX, .06 THICK #SV-330 LE	1.000 EA
51XB1016A07	10-16 X 7/16 HXWSSLD SERTYB	2.000 EA
11XW1032G06	10-32 X .38, TAPTITE II, HEX WSHR SLTD U	1.000 EA
35EP3100M74	FRONT TENV 203 BRG W/O GRGR W/ THRU SH E	1.000 EA
HW5100A03	WAVY WASHER (W1543-017)	1.000 EA
35EP3300A33	SPL FACE MTD EP -ENCL-205 BRG	1.000 EA
51XN1032A20	10-32 X 1 1/4 HX WS SL SR	2.000 EA
35FH4801G	THRU-SHAFT ENCODER COVER INV/VECTOR F1 &	1.000 EA
WD4129	1.50 X 1.50 GRAY SNAP IN PLUG PROMOULD #	2.000 EA
10XN2520A08	1/4-20X1/2 HEX HEAD CAP	4.000 EA
10XN2520A08	1/4-20X1/2 HEX HEAD CAP	1.000 EA
35CB4521GX	CONDUIT BOX LID KIT	1.000 EA
51XW0832A07	8-32 X .44, TAPTITE II, HEX WSHR SLTD SE	4.000 EA
HW2501D13	KEY, 3/16 SQ X 1.375	1.000 EA
HA7000A04	KEY RETAINER 0.625 DIA SHAFTS	1.000 EA
MJ5004A05	#242-21 LOCTITE GENERAL PURPOSE MED. STR	0.005 EA
85XU0407S04	4X1/4 U DRIVE PIN STAINLESS	2.000 EA
MJ1000A02	GREASE, POLYREX EM EXXON (USe 4824-15A)	0.050 LB
MG1025N19	MUNSELL 8.5BG 3.57/2.0, GLOSS 30, B/G,	0.017 GA
HA3100A12	THRUBOLT 10-32 X 7.375	4.000 EA

Parts List (continued)		
Part Number	Description	Quantity
LB1119N	WARNING LABEL	1.000 EA
LC0145B01	CONNECTION LABEL	1.000 EA
NP3301L	SS INV UL CSA CC (W/OUT DESIGN FIELD)	1.000 EA
36PA1000	PKG GRP, PRINT PK1016A06	1.000 EA
MN416A01	TAG-INSTAL-MAINT no wire (1100/bx) 11/14	1.000 EA

NP VOLTS	230/460	MAX SAFE RPM	2700	WYE CONN EQ. CKT OHMS PER PHASE (BASE RATING, 200)			
NP AMPS	2.28/1.14	Base Volt	460	R1	11.500	X1	13.800
HP	0.75HP	NL AMPS	0.8	R2	7.210	X2	8.810
BASE SPEED	1750	Slips	1.67			XM	333.000
PHASE/HZ	3/60	WK ² (lb-ft ²)	0.1				

Rated Full Load Data


	RPM	HP	Torque	Volts	Freq-Hz	Amps
Base Speed	1752	0.7	2.2	460	60	1.1
Max Speed	2628	0.7	1.5	460	90	1.0
Min Speed	0	0.0	2.2	49.54	1.67	1.1

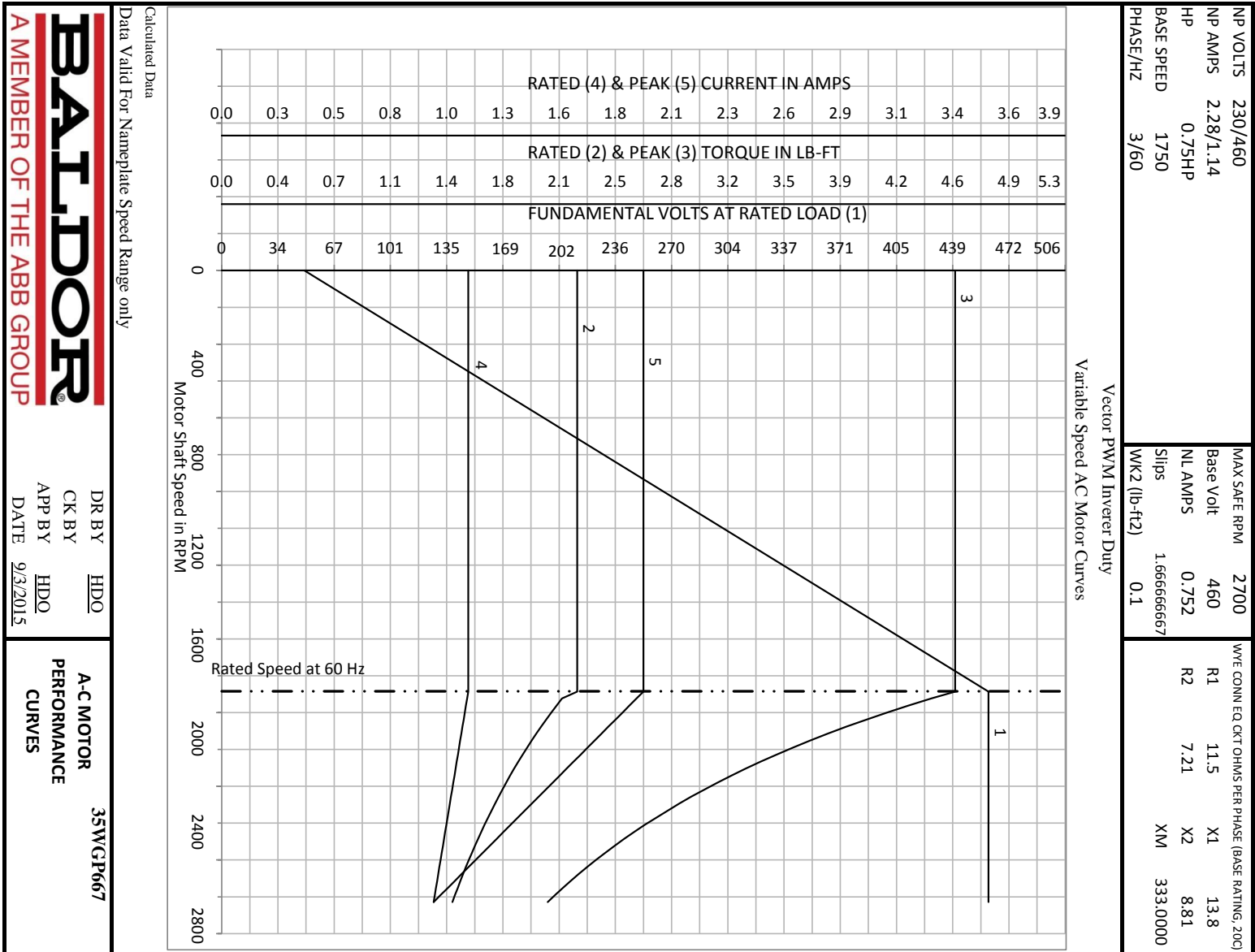
Load Performance at Base Speed

	RPM	HP	Torque	Volts	Freq-Hz	Amps
No Load	1799	0.0	0.0	460	60	0.8
1/4	1790	0.2	0.5	460	60	0.8
1/2	1778	0.4	1.1	460	60	0.9
3/4	1765	0.6	1.7	460	60	1.0
Full Load	1752	0.7	2.2	460	60	1.1
O/L	1698	1.5	4.6	460	60	2.0

Blower Data	Volts	Pn/Hz	FL Amps	LR Amps	Frame	CFM

Remarks: Calculated Data
Vector PWM Inverter Duty

 A MEMBER OF THE ABB GROUP	DR BY	HDO	A-C MOTOR PERFORMANCE CURVES
	CK BY		
	APP BY	HDO	
	DATE	9/3/2015	



BALDOR

A MEMBER OF THE ABB GROUP

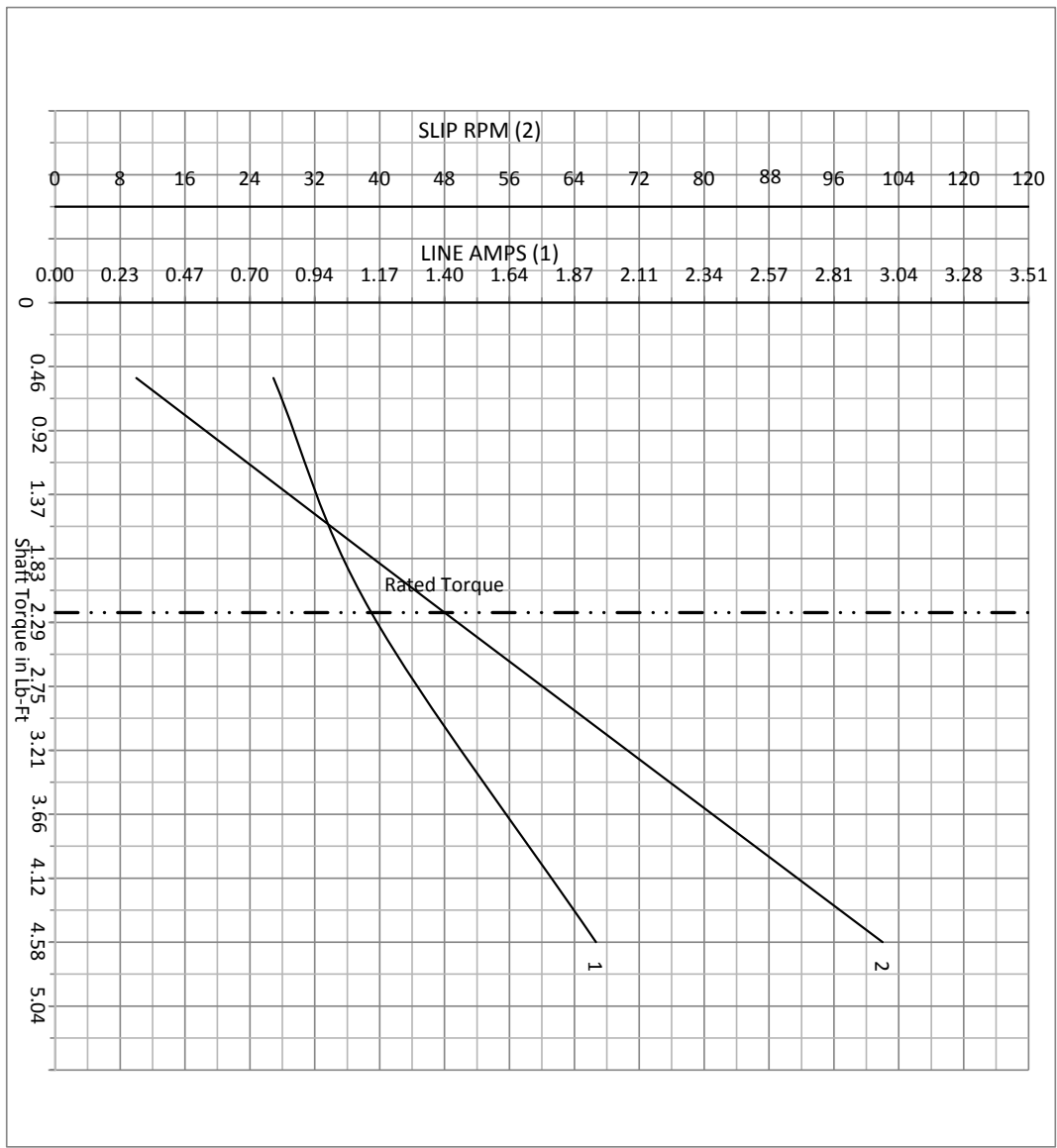
DR BY _____ HDO _____
 CK BY _____
 APP BY _____
 DATE 9/3/2015

A-C MOTOR
 PERFORMANCE
 CURVES

35WGP667

NP VOLTS	230/460	MAX SAFE RPM	2700	WYE CONN. EQ. CKT. OHMS PER PHASE (BASE RATING, 200C)			
NP AMPS	2.28/1.14	Base Volt	460	R1	11.5	X1	13.8
HP	0.75HP	NL AMPS	0.752	R2	7.21	X2	8.81
BASE SPEED	1750	Slips	1.66666667			XM	333
PHASE/HZ	3/60	WK2 (lb-ft ²)	0.1				

Vector PWM Inverter Duty
Variable Speed AC Motor Curves

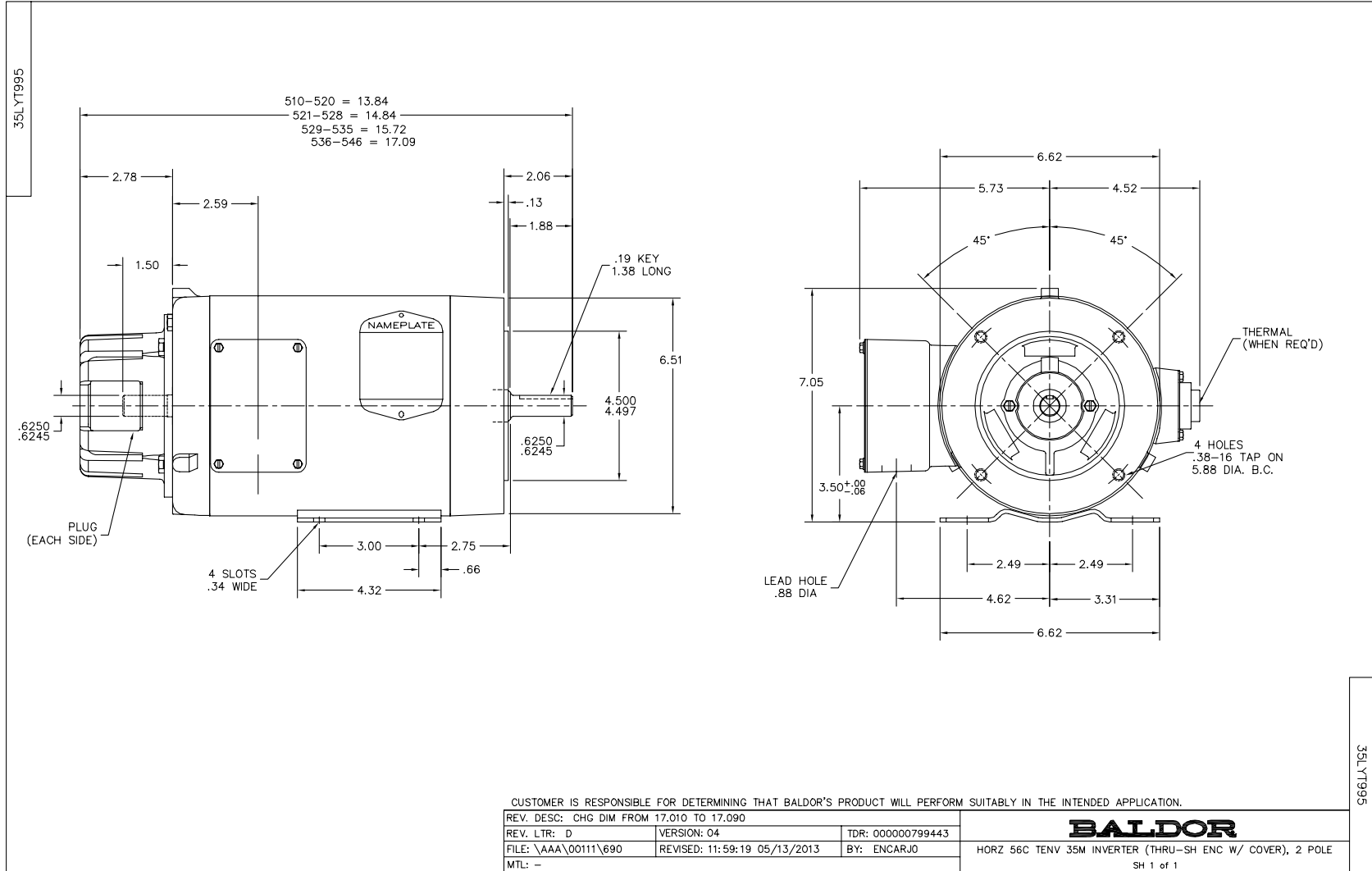


Calculated Data

Data Valid For Nameplate Speed Range only

BALDOR
A MEMBER OF THE ABB GROUP

DR BY	HDO	A-C MOTOR	35WGP667
CK BY		PERFORMANCE	
APP BY	HDO	CURVES	
DATE	9/3/2015		



CD0005

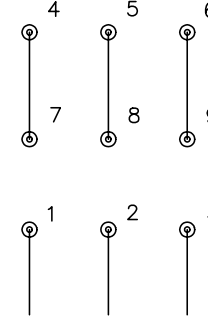


LOW VOLTAGE
(2Y)



LINE

HIGH VOLTAGE
(1Y)



LINE

NOTES:

1. INTERCHANGE ANY TWO LINE LEADS TO REVERSE ROTATION.
2. OPTIONAL THERMOSTATS ARE PROVIDED WHEN SPECIFIED.
3. ACTUAL NUMBER OF INTERNAL PARALLEL CIRCUITS MAY BE A MULTIPLE OF THOSE SHOWN ABOVE.
4. LEAD COLORS ARE OPTIONAL. LEADS MUST ALWAYS BE NUMBERED AS SHOWN.

REV. DESC: REVISE TO SHOW OPTIONAL COLORS			
REV. LTR: E	BY: JLP	REVISED: 01/19/99 10:15	TDR: 0171435
90000		FILE: AAA00005140	MDL: -
		MTL: -	

BALDOR ELECTRIC Co.

3PH, DV, 9 LEADS

CD0005