

BALDOR® • *RELIANCE*

Product Information Packet

IDNM3542

.75HP,1750RPM,3PH,60HZ,56C,3514M,TENV,F1

Part Detail							
Revision:	P	Status:	PRD/A	Change #:		Proprietary:	No
Type:	AC	Elec. Spec:	35WGP672	CD Diagram:	CD0005	Mfg Plant:	
Mech. Spec:	35T995	Layout:	35LYT995	Poles:	04	Created Date:	02-20-2008
Base:	RG	Eff. Date:	01-12-2017	Leads:	9#18		

Specs			
Catalog Number:	IDNM3542	Insulation Class:	H
Enclosure:	TENV	Inverter Code:	Inverter Duty
Frame:	56C	KVA Code:	M
Frame Material:	Steel	Lifting Lugs:	No Lifting Lugs
Output @ Frequency:	.750 HP @ 60 HZ	Locked Bearing Indicator:	Locked Bearing
Synchronous Speed @ Frequency:	1800 RPM @ 60 HZ	Motor Lead Quantity/Wire Size:	9 @ 18 AWG
Voltage @ Frequency:	230.0 V @ 60 HZ	Motor Lead Exit:	Ko Box
	460.0 V @ 60 HZ	Motor Lead Termination:	Flying Leads
XP Class and Group:	None	Motor Type:	3514M
XP Division:	Not Applicable	Mounting Arrangement:	F1
Agency Approvals:	UR	Power Factor:	66
	CSA	Product Family:	General Purpose
Auxillary Box:	No Auxillary Box	Pulley End Bearing Type:	Ball
Auxillary Box Lead Termination:	None	Pulley Face Code:	C-Face
Base Indicator:	Rigid	Pulley Shaft Indicator:	Standard
Bearing Grease Type:	Polyrex EM (-20F +300F)	Rodent Screen:	None
Blower:	None	Shaft Extension Location:	Pulley End
Current @ Voltage:	1.400 A @ 460.0 V	Shaft Ground Indicator:	No Shaft Grounding

	2.800 A @ 230.0 V	Shaft Rotation:	Reversible: Connected Standard
Design Code:	B	Shaft Slinger Indicator:	No Slinger
Drip Cover:	No Drip Cover	Speed Code:	Single Speed
Duty Rating:	CONT	Motor Standards:	NEMA
Electrically Isolated Bearing:	Not Electrically Isolated	Starting Method:	Direct on line
Feedback Device:	NO FEEDBACK	Thermal Device - Bearing:	None
Front Face Code:	Encoder/Feedback Device	Thermal Device - Winding:	Normally Closed Thermostat
Front Shaft Indicator:	None	Vibration Sensor Indicator:	No Vibration Sensor
Heater Indicator:	No Heater	Winding Thermal 1:	None
		Winding Thermal 2:	None

Nameplate NP1162L	
CAT NO	IDNM3542
SPEC.	35T995P672G1
FRAME	56C HP .75 TE
VOLTS	230/460
MAG CUR	2.2/1.1 FLA 2.8/1.4
RPM	1750 RPM MAX 6000
HZ	60 PH 3 CLASS H
SER.F.	1.00 DES B SL HZ 1.67
NEMA-NOM-EFF	78.5 WK2 0.0827
BLWR V	PH HZ A
RATING	40C AMB-CONT
DE BRG	6205 ODE BRG 6203
CC	SN

Parts List		
Part Number	Description	Quantity
SA168981	SA 35T995P672G1	1.000 EA
RA157270	RA 35T995P672G1	1.000 EA
NS2512A01	INSULATOR, CONDUIT BOX X	1.000 EA
35CB3007	35 CB CASTING W/.88 DIA. LEAD HOLE	1.000 EA
36GS1000SP	GASKET-CONDUIT BOX, .06 THICK #SV-330 LE	1.000 EA
51XB1016A07	10-16 X 7/16 HXWSSLD SERTYB	2.000 EA
11XW1032G06	10-32 X .38, TAPTITE II, HEX WSHR SLTD U	1.000 EA
35EP3100M74	FRONT TENV 203 BRG W/O GRGR W/ THRU SH E	1.000 EA
HW5100A03	WAVY WASHER (W1543-017)	1.000 EA
35EP3300A33	SPL FACE MTD EP -ENCL-205 BRG	1.000 EA
51XN1032A20	10-32 X 1 1/4 HX WS SL SR	2.000 EA
35FH4801G	THRU-SHAFT ENCODER COVER INV/VECTOR F1 &	1.000 EA
WD4129	1.50 X 1.50 GRAY SNAP IN PLUG PROMOULD #	2.000 EA
10XN2520A08	1/4-20X1/2 HEX HEAD CAP	4.000 EA
10XN2520A08	1/4-20X1/2 HEX HEAD CAP	1.000 EA
35CB4521GX	CONDUIT BOX LID KIT	1.000 EA
51XW0832A07	8-32 X .44, TAPTITE II, HEX WSHR SLTD SE	4.000 EA
HW2501D13	KEY, 3/16 SQ X 1.375	1.000 EA
HA7000A04	KEY RETAINER 0.625 DIA SHAFTS	1.000 EA
MJ5004A05	#242-21 LOCTITE GENERAL PURPOSE MED. STR	0.005 EA
85XU0407S04	4X1/4 U DRIVE PIN STAINLESS	2.000 EA
MJ1000A02	GREASE, POLYREX EM EXXON (USe 4824-15A)	0.050 LB
MG1000G27	MED CHARCOAL METALLIC GREY 400-0096	0.017 GA
HA3100A12	THRUBOLT 10-32 X 7.375	4.000 EA

Parts List (continued)		
Part Number	Description	Quantity
LB1119N	WARNING LABEL	1.000 EA
LC0145B01	CONNECTION LABEL	1.000 EA
NP1162L	SS INV UL CSA CC	1.000 EA
36PA1000	PKG GRP, PRINT PK1016A06	1.000 EA
MN416A01	TAG-INSTAL-MAINT no wire (1100/bx) 11/14	1.000 EA

AC Induction Motor Performance Data

Page 1 of 1



AC Induction Motor Performance Data

Record # 29231

Typical performance - not guaranteed values

Winding: 35WGP672	Type: 3514M	Enclosure: TENV
--------------------------	--------------------	------------------------

Nameplate Data			General Characteristics at 460 V, 60 Hz: High Volt Connection		
Rated Output (HP)	.75		Full Load Torque	2.26 LB-FT	
Volts	230/460		Start Configuration	DOL	
Full Load Amps	2.8/1.4		Break Down Torque	11.5 LB-FT	
R.P.M.	1750		Pull-Up Torque	6.93 LB-FT	
Hz	60	Phase	3	Locked-rotor Torque	7.71 LB-FT
NEMA Design Code	B	KVA Code	M	Starting Current	10.5 Amps
Service Factor	1		No-load Current	1.07 Amps	
NEMA Nom. Eff.	78.5	P.F.	66	Line-line Res. @ 25°C.	21.9 Ohms
Rating - Duty	40C AMB-CONT		Temp. Rise @ Rated Load	78°C	
S.F. Amps			Temp. Rise @ S.F. Load		

Load Characteristics at 460 Volts, 60 Hz, 0.75 HP

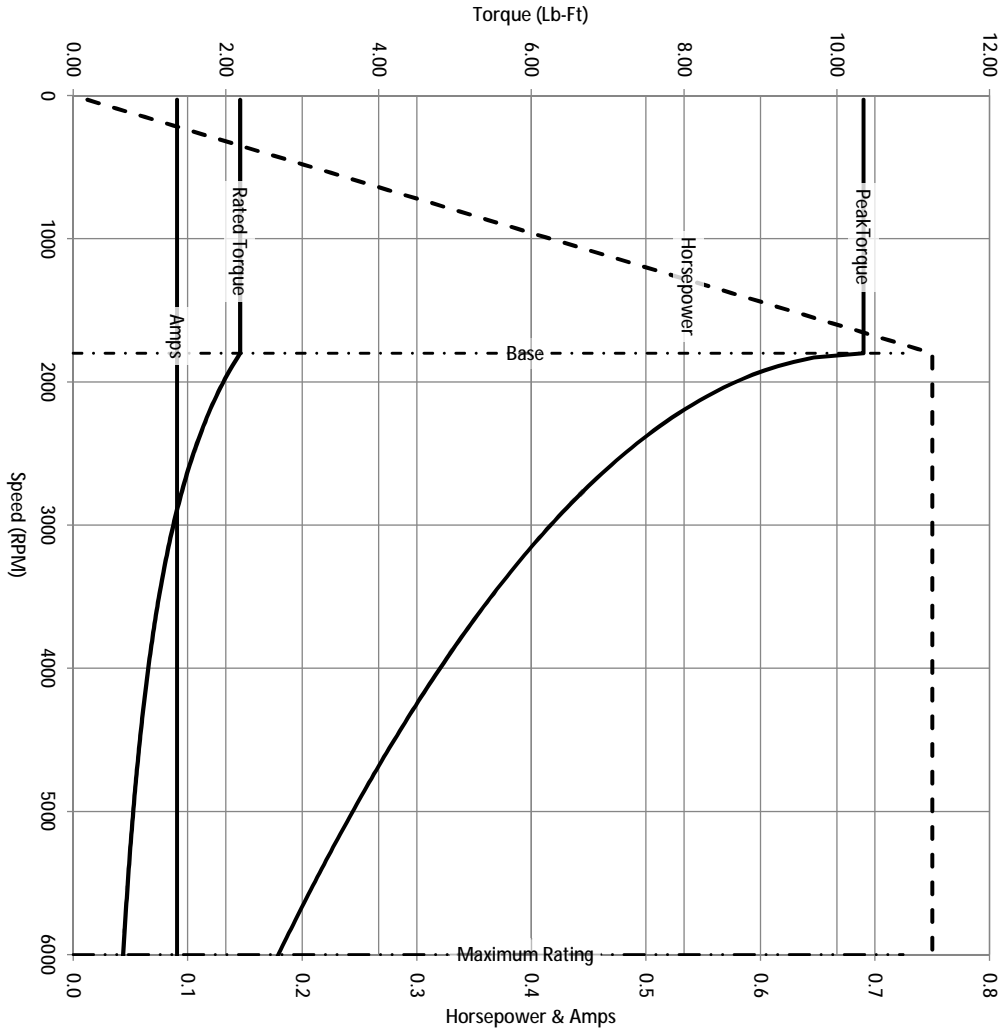
% of Rated Load	25	50	75	100	125	150	S.F.
Power Factor	28	44	56	66	74	79	
Efficiency	57.7	71.7	76.6	78.6	79	78.6	
Speed	1789	1777	1766	1751	1736	1722	
Line Amperes	1.08	1.14	1.22	1.36	1.52	1.69	

Baldor Electric Company Fort Smith, Arkansas

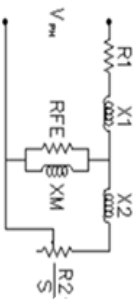


3/6/2013

Catalog	IDNM3542	NP VOLTS	230/460	ENCLOSURE	TENV	WYE CONN EO CKT OHMS PER PHASE (BASE RATING, 20C)
FRAME	56C	NP AMPS	2.8/1.4	Base Volts	460	R1 10.800 X1 11.735
HP	0.75 HP	DUTY	Cont	Base AMPS	1.36	R2 5.800 X2 6.894
BASE SPEED	1800	MAX SAFE RPM	6000	Slip Hz	1.63	XM1 236.038
PHASE/HZ	3/60	AMB ⁰ /TNSDL	40/H	WK ² (lb-ft ²)	0.0827	



Remarks: Calculated Data



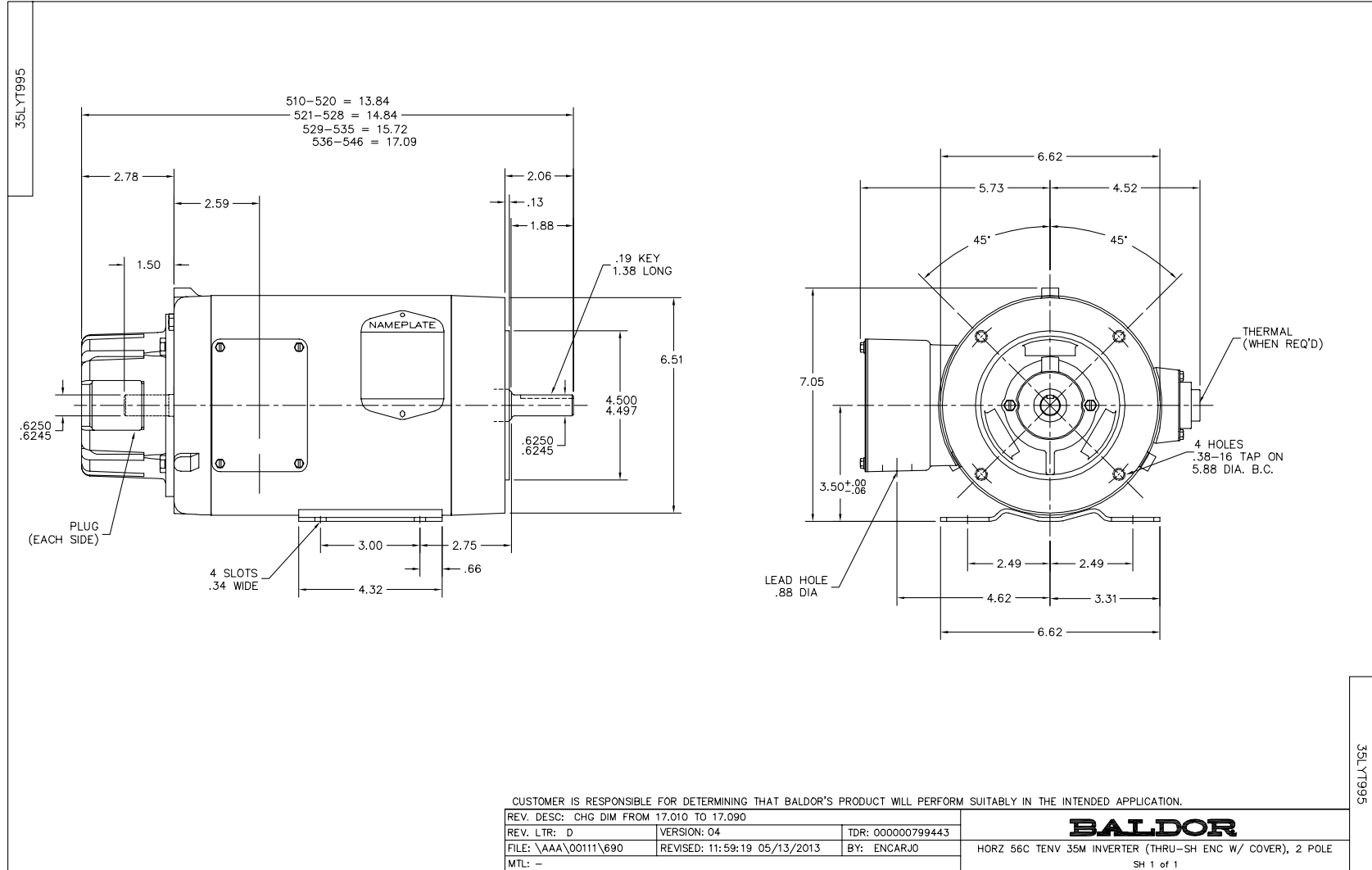
BALDOR
A MEMBER OF THE ABB GROUP

DR BY ENR
CK BY
APP BY ENR
DATE 3/6/2013

A-C MOTOR
PERFORMANCE CURVES

35T995P672G1

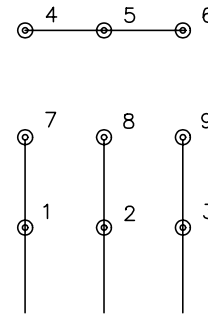
ISSUE DATE 3/6/2013



CD0005

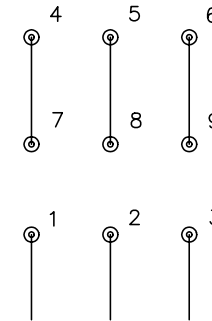


LOW VOLTAGE
(2Y)



LINE

HIGH VOLTAGE
(1Y)



LINE

NOTES:

1. INTERCHANGE ANY TWO LINE LEADS TO REVERSE ROTATION.
2. OPTIONAL THERMOSTATS ARE PROVIDED WHEN SPECIFIED.
3. ACTUAL NUMBER OF INTERNAL PARALLEL CIRCUITS MAY BE A MULTIPLE OF THOSE SHOWN ABOVE.
4. LEAD COLORS ARE OPTIONAL. LEADS MUST ALWAYS BE NUMBERED AS SHOWN.

REV. DESC: REVISE TO SHOW OPTIONAL COLORS

REV. LTR: E BY: JLP

REVISED: 01/19/99 10:15

TDR: 0171435

9000D

FILE: AAA00005140

MDL: -

MTL: -

BALDOR ELECTRIC Co.

3PH, DV, 9 LEADS

CD0005