

**BALDOR • RELIANCE**

---

# Customer information packet

## FDL3514M

1.5HP, 1750RPM, 1PH, 60HZ, 56H, 3532LC, TEFC, F

Class - None

Division - Not Applicable

## Specifications

Enclosure	TEFC
Frame	56H
Frame Material	Steel
Frequency	60.00 Hz
Haz Area Class and Group	None
Haz Area Division	Not Applicable
Motor Letter Type	Cap Start, Cap Run
Output @ Frequency	1.500 HP @ 60 HZ
Phase	1
Synchronous Speed @ Frequency	1800 RPM @ 60 HZ
Voltage @ Frequency	230.0 V @ 60 HZ 208.0 V @ 60 HZ 115.0 V @ 60 HZ
Agency Approvals	CSA UR
Ambient Temperature	40 °C
Auxillary Box	No Auxillary Box
Auxillary Box Lead Termination	None
Base Indicator	Rigid
Bearing Grease Type	Polyrex EM (-20F +300F)
Blower	None
Current @ Voltage	7.100 A @ 208.0 V 6.500 A @ 230.0 V 13.000 A @ 115.0 V
Design Code	L
Drip Cover	No Drip Cover
Duty Rating	CONT
Efficiency @ 100% Load	80.0 %
Electrically Isolated Bearing	Not Electrically Isolated
Feedback Device	NO FEEDBACK
Front Shaft Indicator	None
Heater Indicator	No Heater

## Part detail

Revision	E
Type	AC
Mech. spec.	35E2560
Base	
Status	PRD/A
Elec. spec.	35WGZ997
Layout	35LYE2560
Eff. date	07-25-2024
CD Diagram	CD0320
Poles	04
Leads	4#16 A&J,2#18 B PH,1#14 #4TH
Proprietary	False
Created date	01-16-2024

High Voltage Full Load Amps	6.5 a
Insulation Class	F
Inverter Code	Not Inverter
KVA Code	J
Lifting Lugs	No Lifting Lugs
Locked Bearing Indicator	No Locked Bearing
Motor Lead Quantity/Wire Size	4 @ 16 AWG, A&J
Motor Lead Termination	Flying Leads
Motor Standards	NEMA
Motor Type	3532LC
Mounting Arrangement	F1
Number of Poles	4
Overall Length	13.78 IN
Power Factor	95
Product Family	General Purpose
Pulley End Bearing Type	Sealed Bearing
Pulley Face Code	Standard
Pulley Shaft Indicator	Standard
Rodent Screen	None
Service Factor	1.00
Shaft Diameter	0.625 IN
Shaft Ground Indicator	No Shaft Grounding
Shaft Rotation	Reversible
Shaft Slinger Indicator	Shaft Slinger
Speed	1750 rpm
Speed Code	Single Speed
Starting Method	Direct on line
Thermal Device - Bearing	None
Thermal Device - Winding	None
Vibration Sensor Indicator	No Vibration Sensor
Winding Thermal 1	Manual Thermal Overload
Winding Thermal 1 Location	KO
Winding Thermal 2	None

**Nameplate**

<b>NP1280L</b>									
<b>CAT.NO.</b>	FDL3514M								
<b>SPEC.</b>	35E2560Z997G1								
<b>HP</b>	1.5								
<b>VOLTS</b>	115/208-230								
<b>AMP</b>	13/7.1-6.5								
<b>RPM</b>	1750								
<b>FRAME</b>	56H	<b>HZ</b>	60	<b>PH</b>	1				
<b>SER.F.</b>	1.00	<b>CODE</b>	J	<b>DES</b>	L	<b>CL</b>	F		
<b>NEMA-NOM-EFF</b>	80	<b>PF</b>	95						
<b>RATING</b>	40C AMB-CONT								
<b>CC</b>									
<b>DE</b>	6205	<b>ODE</b>	6203						
<b>ENCL</b>	TEFC	<b>SN</b>							

**Accessories**

<b>Part number</b>	<b>Description</b>	<b>Multiplier</b>
35-3300FD	C FACE KIT FARM DUTY 143-5TC ENCL, 6205	A8
35EP1506A01SP	D-FLANGE KIT	A8

**AC Induction Motor Performance Data**

Record # 104835

Typical performance - not guaranteed values

Winding: 35WGZ997-R001		Type: 3532LC	Enclosure: TEFC	
<b>Nameplate Data</b>			<b>115 V, 60 Hz: Low Voltage Connection</b>	
Rated Output (HP)	1.5	Full Load Torque	4.597 LB-FT	
Volts	115/208-230	Start Configuration	direct on line	
Full Load Amps	13/7.1-6.5	Breakdown Torque	11.5 LB-FT	
R.P.M.	1750	Pull-up Torque	9.24 LB-FT	
Hz	60 Phase	Locked-rotor Torque	11.6 LB-FT	
NEMA Design Code	L KVA Code	Starting Current	93.9 A	
Service Factor (S.F.)	1	No-load Current	3.64 A	
NEMA Nom. Eff.	80 Power Factor	Line-line Res. @ 25°C	2.1749 Ω A Ph 1.8972 Ω B Ph	
Rating - Duty	40C AMB-CONT	Temp. Rise @ Rated Load	64°C	

**Load Characteristics 115 V, 60 Hz, 1.5 HP**

% of Rated Load	25	50	75	100	125	150
Power Factor	78	89	93	95	95	95
Efficiency	64.7	76.4	80.1	80.5	79.1	75.6
Speed	1788.1	1776.5	1764.6	1750.3	1735.8	1712.2
Line amperes	4.97	7.32	9.99	13	16.1	20.2

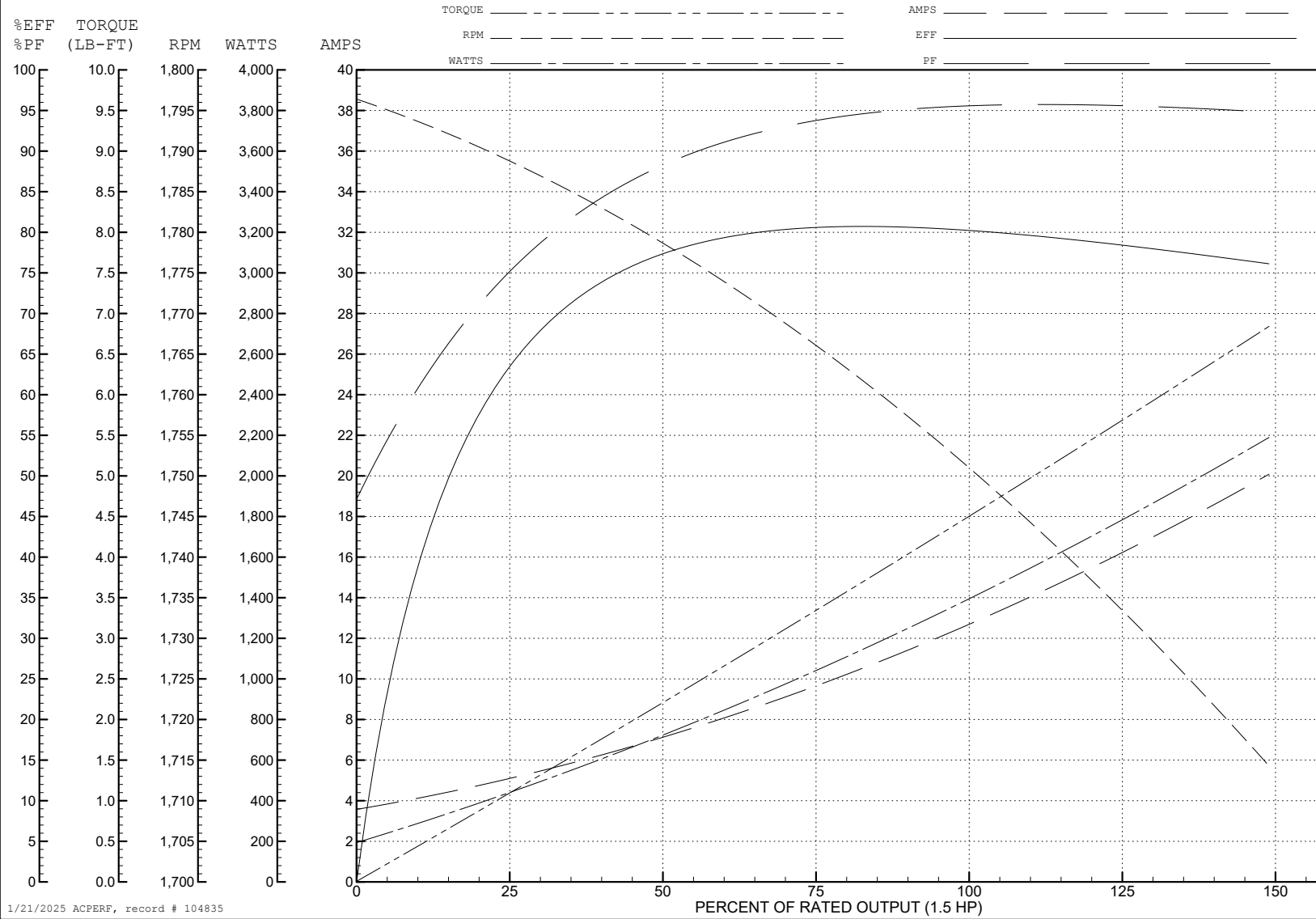
ABB Motors and Mechanical Inc.

WINDING # 35WGZ997

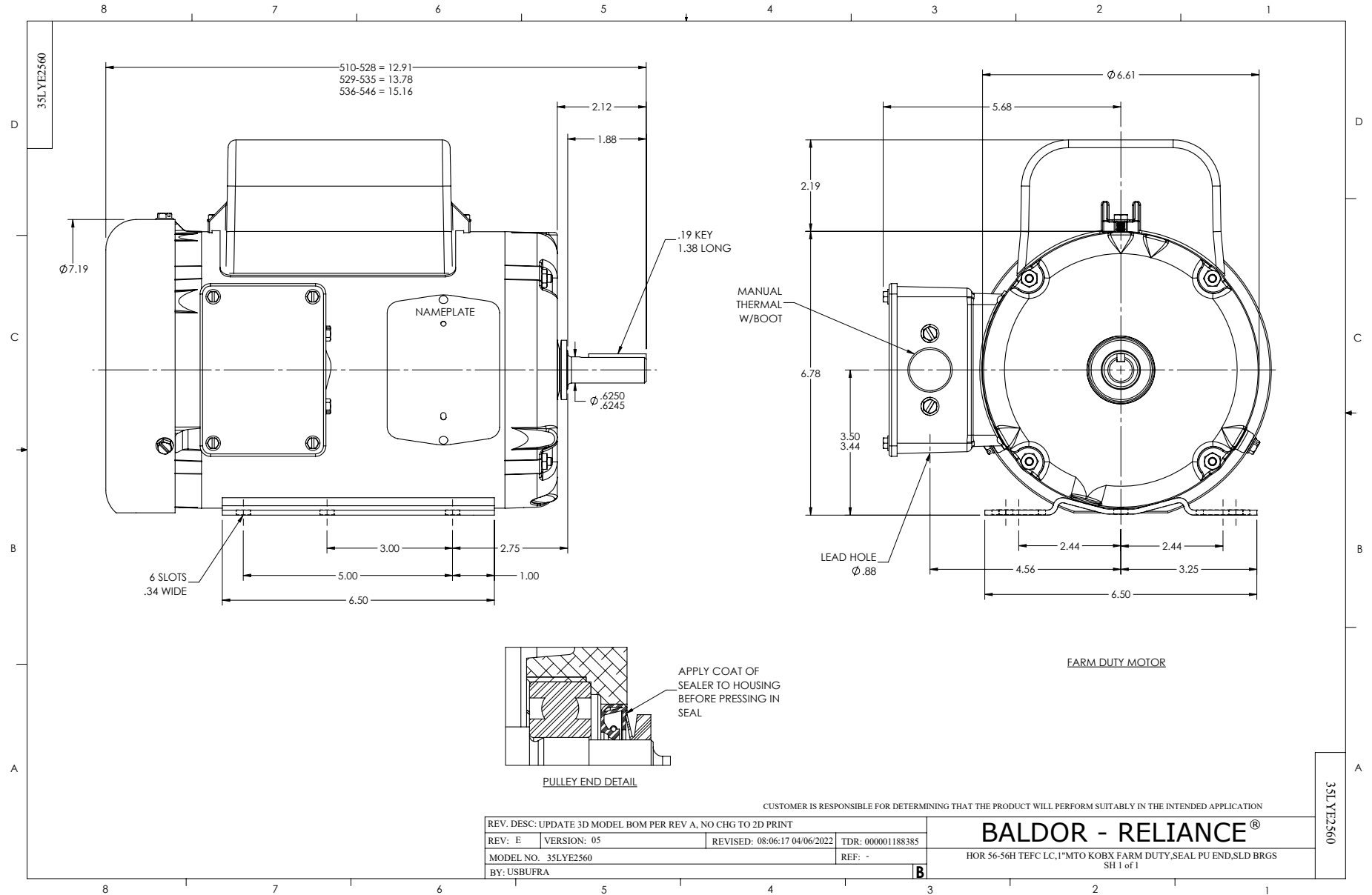
Typical performance - not guaranteed values.

1.5 HP 1 PH 60 HZ 1750 RPM 115 V 3532LC

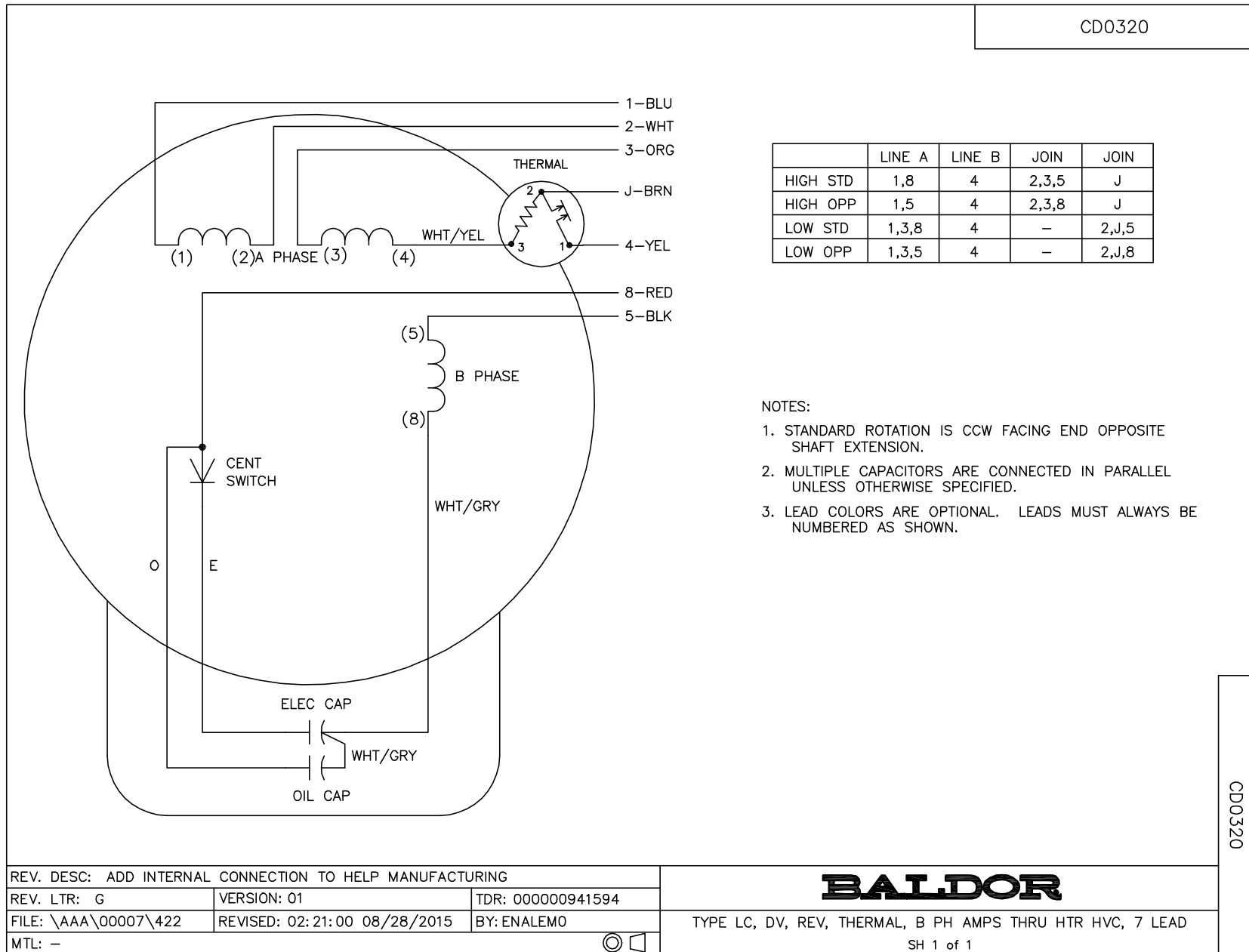
TORQUES (LB-FT): PO=11.5 PU=9.24 LR=11.6 LRA=93.9



1/21/2025 ACPERF, record # 104835



CD0320



	LINE A	LINE B	JOIN	JOIN
HIGH STD	1,8	4	2,3,5	J
HIGH OPP	1,5	4	2,3,8	J
LOW STD	1,3,8	4	-	2,J,5
LOW OPP	1,3,5	4	-	2,J,8

NOTES:

1. STANDARD ROTATION IS CCW FACING END OPPOSITE SHAFT EXTENSION.
2. MULTIPLE CAPACITORS ARE CONNECTED IN PARALLEL UNLESS OTHERWISE SPECIFIED.
3. LEAD COLORS ARE OPTIONAL. LEADS MUST ALWAYS BE NUMBERED AS SHOWN.

CD0320

REV. DESC: ADD INTERNAL CONNECTION TO HELP MANUFACTURING		
REV. LTR: G	VERSION: 01	TDR: 00000941594
FILE: \AAA\00007\422	REVISED: 02:21:00 08/28/2015	BY: ENALEMO
MTL: -		© □

**BALDOR**

TYPE LC, DV, REV, THERMAL, B PH AMPS THRU HTR HVC, 7 LEAD  
SH 1 of 1