

**BALDOR • RELIANCE**

---

# Customer information packet

## EM3663T-BG

5HP, 3480RPM, 3PH, 60HZ, 184T, TEFC, F1

Class - None

Division - Not Applicable

## Specifications

Enclosure	TEFC
Frame	184T
Frame Material	Iron
Frequency	60.00 Hz
Haz Area Class and Group	None
Haz Area Division	Not Applicable
Motor Letter Type	Three Phase
Output @ Frequency	5.000 HP @ 60 HZ
Phase	3
Synchronous Speed @ Frequency	3600 RPM @ 60 HZ
Voltage @ Frequency	460.0 V @ 60 HZ 230.0 V @ 60 HZ
Agency Approvals	CSA CSA EEV NEMA PREMIUM UR
Ambient Temperature	40 °C
Auxillary Box	No Auxillary Box
Auxillary Box Lead Termination	None
Base Indicator	Rigid
Bearing Grease Type	Polyrex EM (-20F +300F)
Blower	None
Current @ Voltage	5.800 A @ 460.0 V 12.400 A @ 208.0 V 11.600 A @ 230.0 V
Design Code	A
Drip Cover	No Drip Cover
Duty Rating	CONT
Efficiency @ 100% Load	88.5 %
Electrically Isolated Bearing	Not Electrically Isolated
Feedback Device	NO FEEDBACK
Heater Indicator	No Heater

## Part detail

Revision	C
Type	AC
Mech. spec.	
Base	
Status	PRD/A
Elec. spec.	06WGX782
Layout	06LYK800
Eff. date	04-29-2024
CD Diagram	CD0005
Poles	02
Leads	9#16
Proprietary	False
Created date	04-10-2019

High Voltage Full Load Amps	5.8 a
Insulation Class	H
Inverter Code	Inverter Ready
IP Rating	NONE
KVA Code	L
Lifting Lugs	Standard Lifting Lugs
Locked Bearing Indicator	Locked Bearing
Motor Lead Termination	Flying Leads
Motor Standards	NEMA
Motor Type	0628M
Mounting Arrangement	F1
Number of Poles	2
Overall Length	15.24 IN
Power Factor	90
Product Family	General Purpose
Pulley Face Code	Standard
Rodent Screen	None
Service Factor	1.15
Shaft Diameter	1.125 IN
Shaft Ground Indicator	Shaft Grounding
Shaft Rotation	Reversible
Speed	3480 rpm
Speed Code	Single Speed
Starting Method	Direct on line
Thermal Device - Winding	None
Vibration Sensor Indicator	No Vibration Sensor
Winding Thermal 1	None
Winding Thermal 2	None

**Nameplate**

**NP3441LUA**

<b>CAT.NO.</b>	EM3663T-BG						
<b>SPEC</b>	06-0000-0086						
<b>HP</b>	5						
<b>VOLTS</b>	230/460						
<b>AMPS</b>	11.6/5.8						
<b>RPM</b>	3480						
<b>FRAME</b>	184T		<b>HZ</b>	60		<b>PH</b>	3
<b>SF</b>	1.15	<b>CODE</b>	L	<b>DES</b>	A	<b>CLASS</b>	H
<b>NEMA NOM. EFF</b>	88.5	<b>PF</b>	90				
<b>RATING</b>	40C AMB-CONT						
<b>CC</b>	010A						
<b>ENCL</b>	TEFC	<b>SER</b>					
<b>DE</b>	6206	<b>ODE</b>	6205				
<b>VPWM INVERTER READY</b>							
<b>CT6-60H(10:1)VT3-60H(20:1</b>	50HZ 5HP 190/380V 14/7A						SF1.0

**AC Induction Motor Performance Data**

Record # 75467

Typical performance - not guaranteed values

Winding: 06WGX782-R003		Type: 0628M	Enclosure: TEFC	
<b>Nameplate Data</b>			<b>460 V, 60 Hz: High Voltage Connection</b>	
Rated Output (HP)	5	Full Load Torque	7.55 LB-FT	
Volts	230/460	Start Configuration	direct on line	
Full Load Amps	11.6/5.8	Breakdown Torque	35.8 LB-FT	
R.P.M.	3480	Pull-up Torque	23.1 LB-FT	
Hz	60 Phase	Locked-rotor Torque	27.7 LB-FT	
NEMA Design Code	A KVA Code	Starting Current	59.9 A	
Service Factor (S.F.)	1.15	No-load Current	2.05 A	
NEMA Nom. Eff.	88.5 Power Factor	Line-line Res. @ 25°C	2.85 Ω	
Rating - Duty	40C AMB-CONT	Temp. Rise @ Rated Load	57°C	
S.F. Amps		Temp. Rise @ S.F. Load	70°C	
		Locked-rotor Power Factor	51.3	
		Rotor inertia	0.125 LB-FT <sup>2</sup>	

**Load Characteristics 460 V, 60 Hz, 5 HP**

% of Rated Load	25	50	75	100	125	150	S.F.
Power Factor	56	77	86	91	93	94	92
Efficiency	85.6	89.7	90.1	89.2	87.9	85.9	88.4
Speed	3574	3547	3517	3485	3452	3413	3465
Line amperes	2.45	3.35	4.53	5.8	7.17	8.69	6.62

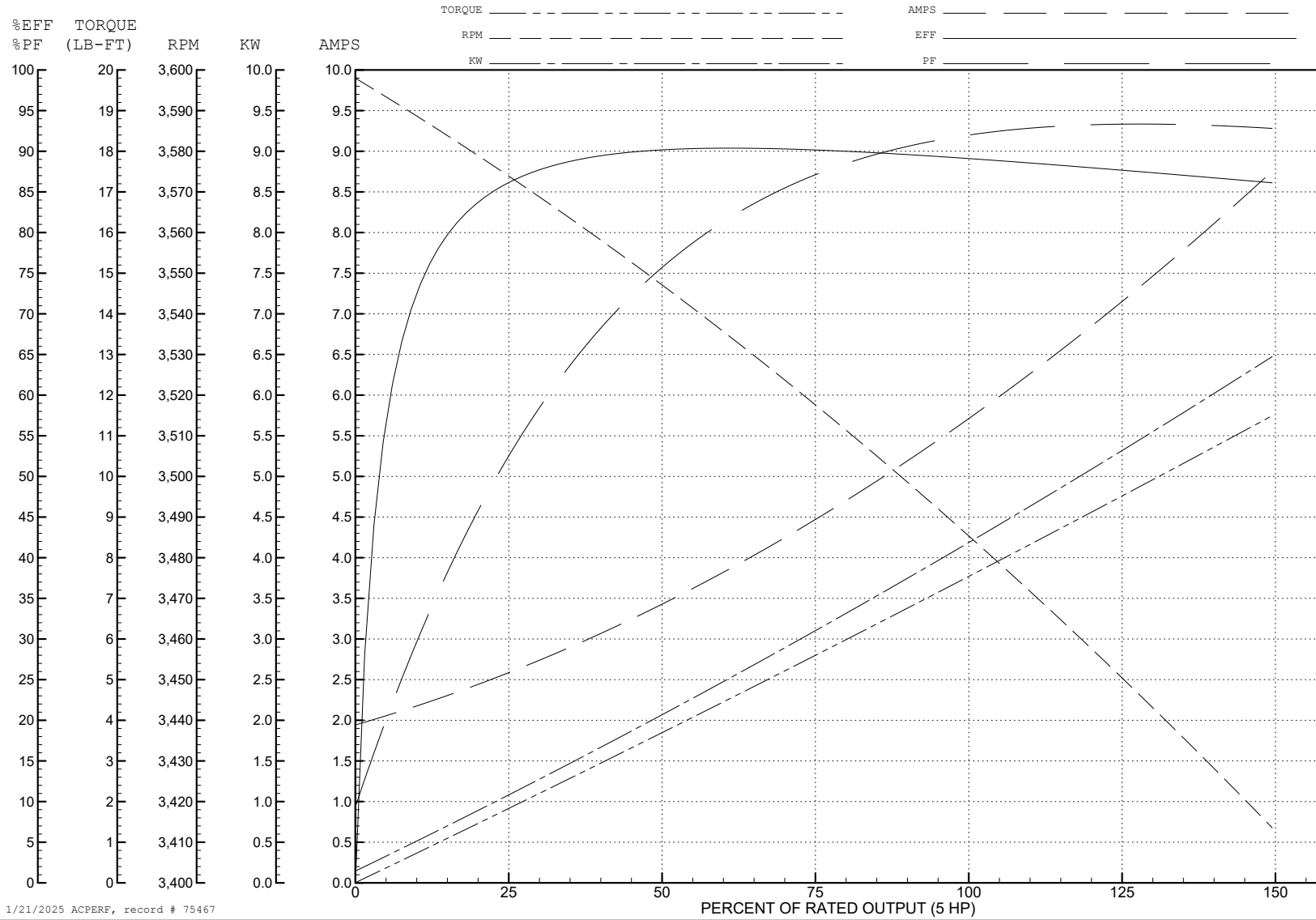
ABB Motors and Mechanical Inc.

WINDING # 06WGX782

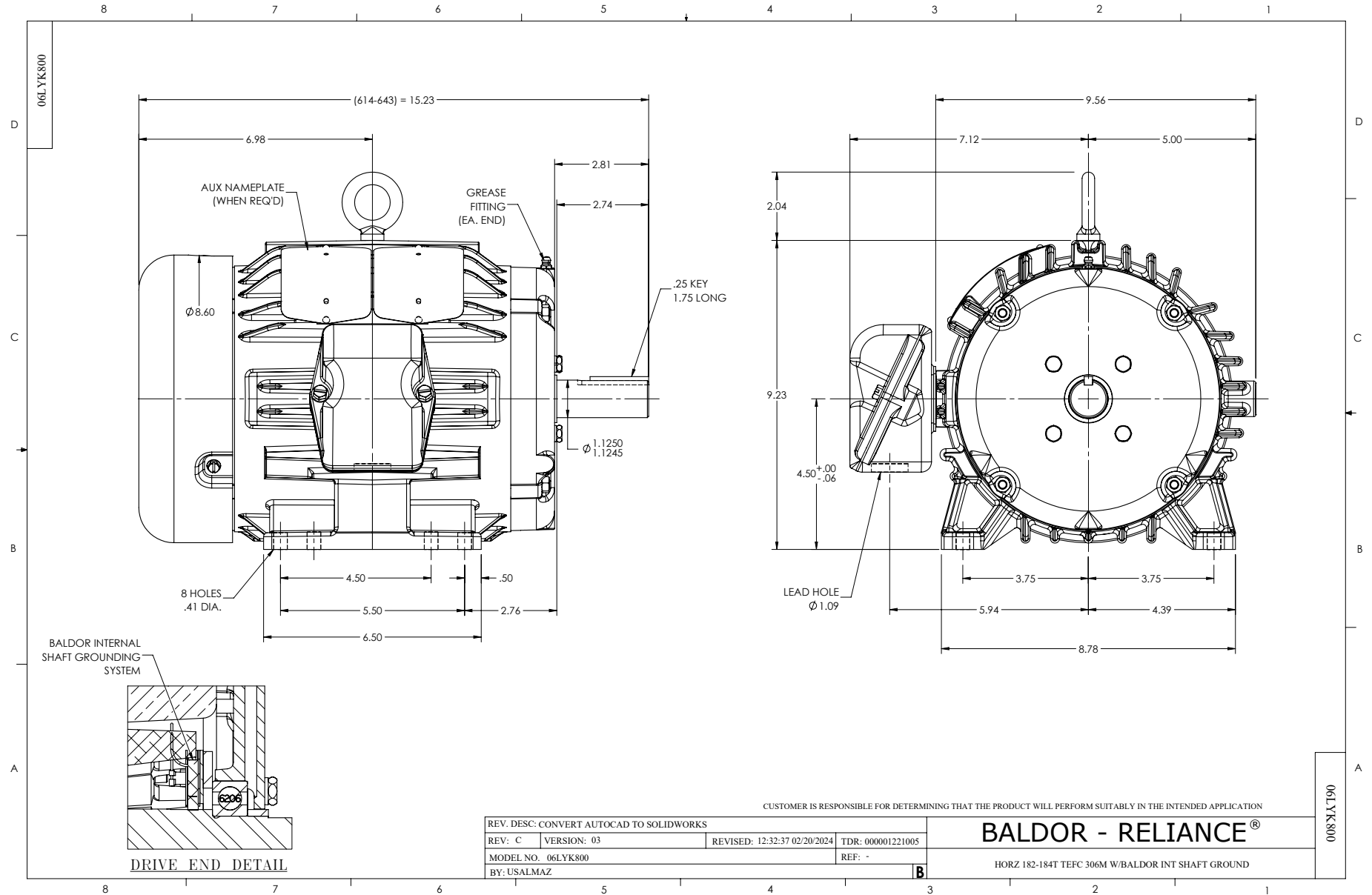
5 HP 3 PH 60 HZ 3480 RPM 460 V 0628M

Typical performance - not guaranteed values.

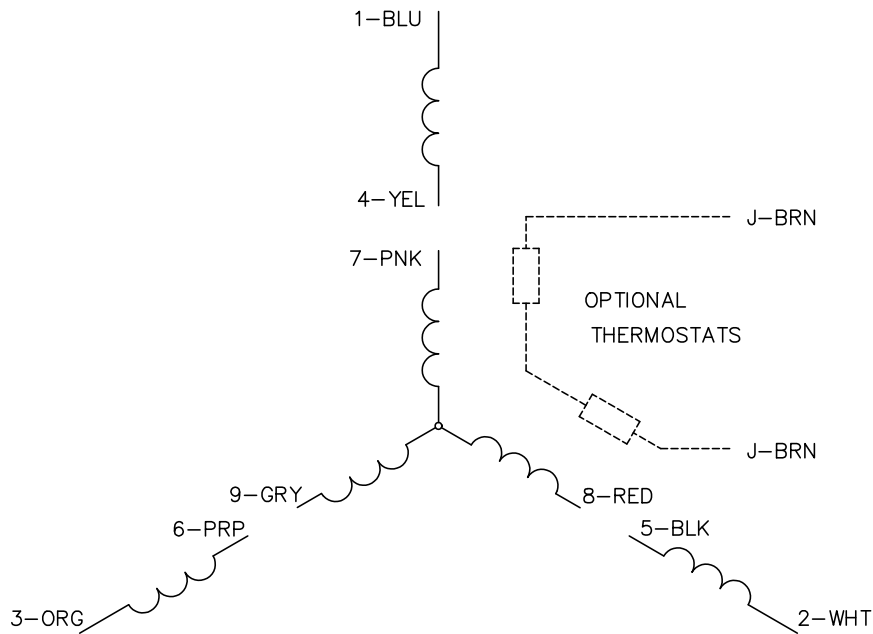
TORQUES (LB-FT): PO=35.8 PU=23.1 LR=27.7 LRA=59.9



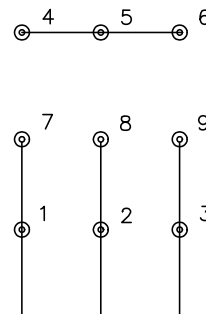
1/21/2025 ACPERF, record # 75467



CD0005



LOW VOLTAGE (2Y)



LINE

HIGH VOLTAGE (1Y)



LINE

NOTES:

1. INTERCHANGE ANY TWO LINE LEADS TO REVERSE ROTATION.
2. OPTIONAL THERMOSTATS ARE PROVIDED WHEN SPECIFIED.
3. ACTUAL NUMBER OF INTERNAL PARALLEL CIRCUITS MAY BE A MULTIPLE OF THOSE SHOWN ABOVE.
4. LEAD COLORS ARE OPTIONAL. LEADS MUST ALWAYS BE NUMBERED AS SHOWN.

CD0005

REV. DESC: REVISE TO SHOW OPTIONAL COLORS			
REV. LTR: E	BY: JLP	REVISED: 01/19/99 10:15	TDR: 0171435
S00000		FILE: AAA00005140	MDL: -
		MTL: -	

BALDOR ELECTRIC Co.

3PH, DV, 9 LEADS