

**BALDOR • RELIANCE**

---

# Customer information packet

## ECTM4100T-5G

15HP, 1175RPM, 3PH, 60HZ, 284T, 1046M, TEFC, F1

Class - None

Division - Not Applicable

## Specifications

Enclosure	TEFC
Frame	284T
Frame Material	Iron
Frequency	60.00 Hz
Haz Area Class and Group	None
Haz Area Division	Not Applicable
Motor Letter Type	Three Phase
Output @ Frequency	15.000 HP @ 60 HZ
Phase	3
Synchronous Speed @ Frequency	1200 RPM @ 60 HZ
Voltage @ Frequency	575.0 V @ 60 HZ
Agency Approvals	CSA EEV NEMA PREMIUM NEMA_PREMIUM UR
Ambient Temperature	40 °C
Auxillary Box	No Auxillary Box
Auxillary Box Lead Termination	None
Base Indicator	Rigid
Bearing Grease Type	Polyrex EM (-20F +300F)
Blower	None
Current @ Voltage	16.000 A @ 575.0 V
Design Code	A
Drip Cover	No Drip Cover
Duty Rating	CONT
Efficiency @ 100% Load	91.7 %
Electrically Isolated Bearing	Not Electrically Isolated
Feedback Device	NO FEEDBACK
Front Shaft Indicator	Tapped & Key
Heater Indicator	Heater Included, 115 V
High Voltage Full Load Amps	16.0 a
Insulation Class	F

## Part detail

Revision	E
Type	AC
Mech. spec.	10T010
Base	
Status	PRD/A
Elec. spec.	10WGY949
Layout	10LYT010
Eff. date	07-19-2023
CD Diagram	CD0006
Poles	06
Leads	3#12
Proprietary	False
Created date	04-13-2022

Inverter Code	Not Inverter
KVA Code	G
Lifting Lugs	Vertical Lifting Lugs
Locked Bearing Indicator	Locked Bearing
Motor Lead Quantity/Wire Size	3 @ 12 AWG
Motor Lead Termination	Flying Leads
Motor Standards	NEMA
Motor Type	1046M
Mounting Arrangement	F1
Number of Poles	6
Overall Length	27.57 IN
Power Factor	76
Product Family	Chemical Processing (Not DC)
Pulley End Bearing Type	Sealed Bearing
Pulley Face Code	Standard
Pulley Shaft Indicator	Tapped & Key
Rodent Screen	None
RoHS Status	ROHS COMPLIANT
Service Factor	1.15
Shaft Diameter	1.875 IN
Shaft Ground Indicator	Shaft Grounding
Shaft Rotation	Reversible
Shaft Slinger Indicator	Shaft Slinger
Speed	1175 rpm
Speed Code	Single Speed
Starting Method	Direct on line
Thermal Device - Bearing	None
Thermal Device - Winding	None
Vibration Sensor Indicator	No Vibration Sensor
Winding Thermal 1	None
Winding Thermal 2	None

**Nameplate**

<b>NP1260</b>									
<b>CAT.NO.</b>	ECTM4100T-5G								
<b>SPEC.</b>	10T010Y949G1								
<b>HP</b>	15								
<b>VOLTS</b>	575								
<b>AMP</b>	16								
<b>RPM</b>	1175								
<b>FRAME</b>	284T	<b>HZ</b>	60	<b>PH</b>	3				
<b>SER.F.</b>	1.15	<b>CODE</b>	G	<b>DES</b>	A	<b>CL</b>	F		
<b>NEMA-NOM-EFF</b>	91.7	<b>PF</b>	76						
<b>RATING</b>	40C AMB-CONT								
<b>CC</b>									
<b>DE</b>	6311	<b>ODE</b>	6309						
<b>ENCL</b>	TEFC	<b>SN</b>							
	INV DUTY 20:1VT								

**AC Induction Motor Performance Data**

Record # 35011

Typical performance - not guaranteed values

Winding: 10WGY949-R001		Type: 1046M	Enclosure: TEFC
<b>Nameplate Data</b>		<b>575 V, 60 Hz: Single Voltage Motor</b>	
Rated Output (HP)	15	Full Load Torque	66.7 LB-FT
Volts	575	Start Configuration	direct on line
Full Load Amps	16	Breakdown Torque	201 LB-FT
R.P.M.	1175	Pull-up Torque	87.8 LB-FT
Hz	60 Phase	Locked-rotor Torque	107 LB-FT
NEMA Design Code	A KVA Code	Starting Current	109 A
Service Factor (S.F.)	1.15	No-load Current	8.97 A
NEMA Nom. Eff.	91.7 Power Factor	Line-line Res. @ 25°C	0.868 Ω
Rating - Duty	40C AMB-CONT	Temp. Rise @ Rated Load	43°C
S.F. Amps		Temp. Rise @ S.F. Load	52°C
		Locked-rotor Power Factor	33.5
		Rotor inertia	5.63 LB-FT <sup>2</sup>

**Load Characteristics 575 V, 60 Hz, 15 HP**

% of Rated Load	25	50	75	100	125	150	S.F.
Power Factor	35	55	68	75	78	80	78
Efficiency	83.5	89.7	91.3	91.6	91.3	90.6	91.6
Speed	1196	1192	1189	1185	1180	1176	1180
Line amperes	9.64	11.25	13.58	16.41	19.7	23.25	18.1

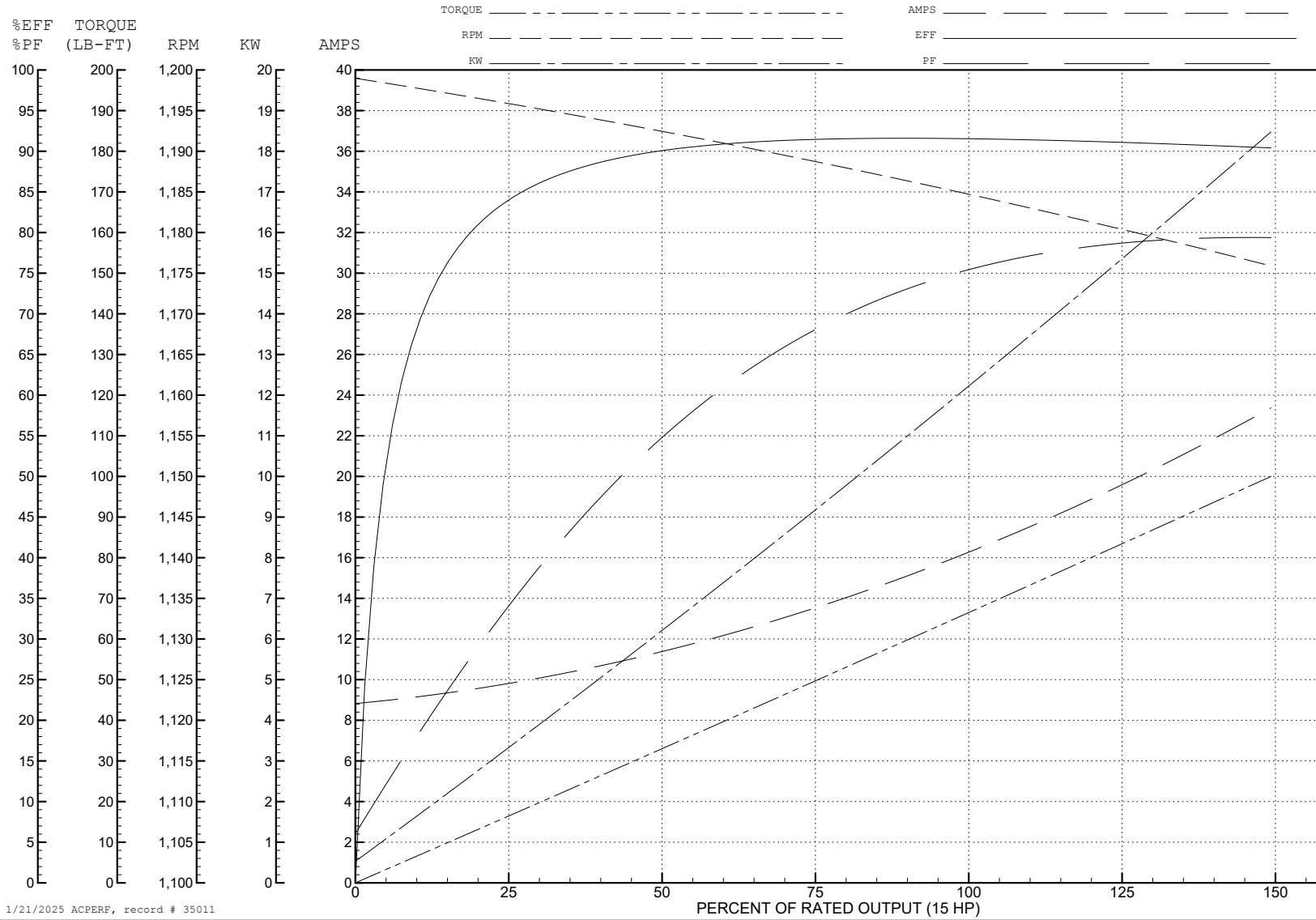
ABB Motors and Mechanical Inc.

WINDING # 10WGY949

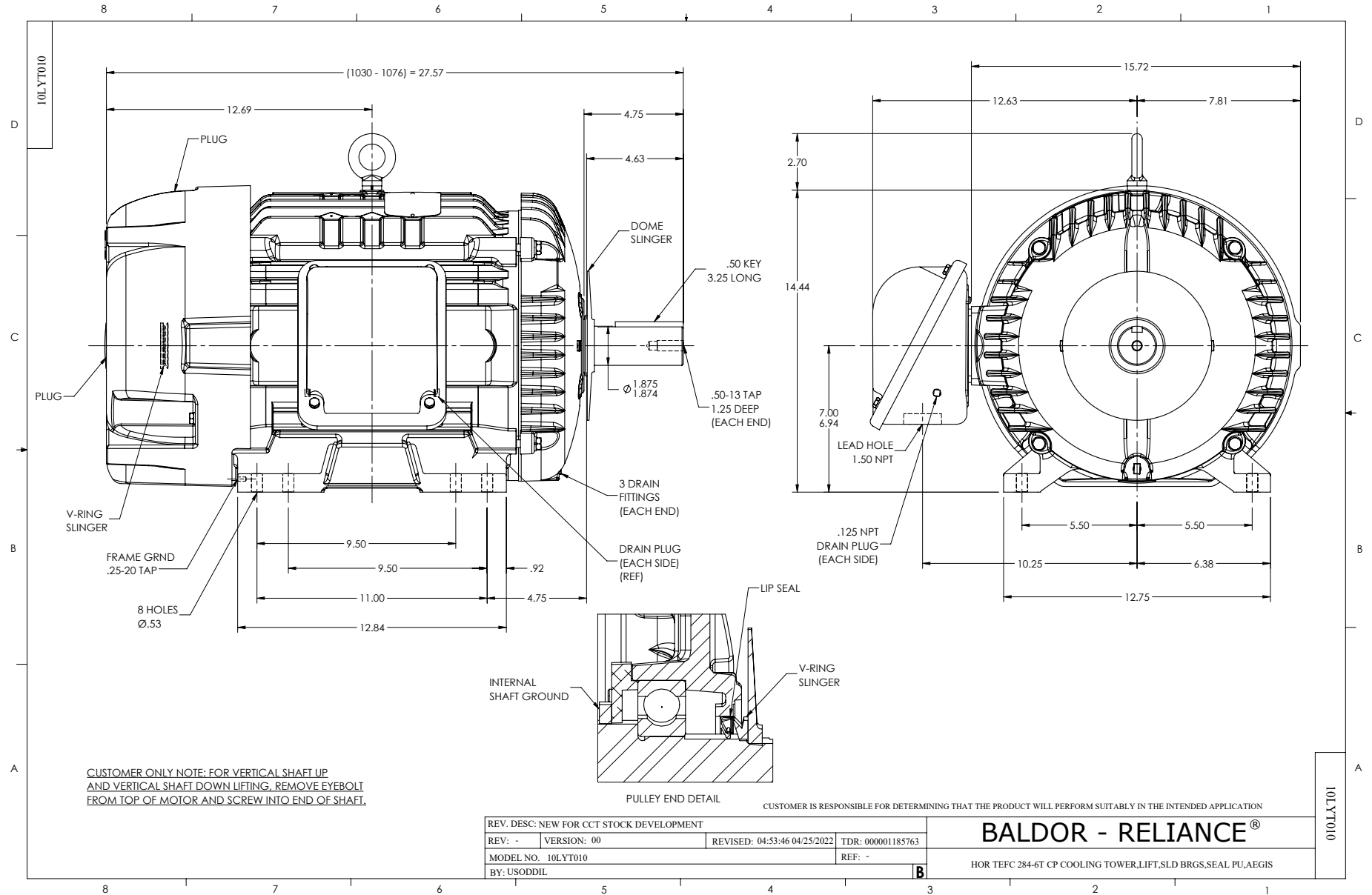
Typical performance - not guaranteed values.

15 HP 3 PH 60 HZ 1175 RPM 575 V 1046M

TORQUES (LB-FT): PO=201 PU=87.8 LR=107 LRA=109



1/21/2025 ACPERF, record # 35011



CD0006



NOTES:

1. THREE LEAD MOTOR MAY BE EITHER WYE CONNECTED OR DELTA CONNECTED.
2. INTERCHANGE ANY TWO LINE LEADS TO REVERSE ROTATION.
3. OPTIONAL THERMOSTATS ARE PROVIDED WHEN SPECIFIED.
4. ACTUAL NUMBER OF INTERNAL PARALLEL CIRCUITS MAY VARY.
5. LEAD COLORS ARE OPTIONAL. LEADS MUST BE NUMBERED AS SHOWN.

CD0006

REV. DESC: ADD CLASS CONN00000007		
REV. LTR: E	VERSION: 01	TDR: 000001099922
FILE: \AAA\00005\141	REVISED: 10:24:49 02/19/2019	BY: ENBRIRO
MTL: -	© □	

**BALDOR - RELIANCE®**

3PH, SV, 3 LEADS, WYE OR DELTA CONNECTED

SH 1 of 1