

**BALDOR • RELIANCE**

---

# Customer information packet

## DRX21564T

5HP, 1158//965RPM, 3PH, 60HZ, 215T, XPFC, F1

Class - CLI GP C,D

Division - Division I

## Specifications

Enclosure	XPFC
Frame	215T
Frame Material	Iron
Frequency	50.00 Hz 60.00 Hz
Haz Area Class and Group	CLI GP C,D
Haz Area Division	Division I
Motor Letter Type	Three Phase
Output @ Frequency	5.000 HP @ 60 HZ 3.000 HP @ 50 HZ
Phase	3
Synchronous Speed @ Frequency	1200 RPM @ 60 HZ
Voltage @ Frequency	460.0 V @ 60 HZ 190.0 V @ 50 HZ 230.0 V @ 60 HZ 380.0 V @ 50 HZ
Agency Approvals	UL CSA EEV
Ambient Temperature	40 °C
Auxillary Box	No Auxillary Box
Auxillary Box Lead Termination	None
Base Indicator	Rigid
Bearing Grease Type	Polyrex EM (-20F +300F)
Blower	None
Constant Torque Speed Range	6
Current @ Voltage	11.000 A @ 190.0 V 14.200 A @ 230.0 V 5.500 A @ 380.0 V 7.100 A @ 460.0 V
Design Code	B
Drip Cover	No Drip Cover
Duty Rating	CONT

## Part detail

Revision	D
Type	AC
Mech. spec.	
Base	
Status	PRD/A
Elec. spec.	07WGY242
Layout	07LYJ231
Eff. date	02-14-2024
CD Diagram	CD0005
Poles	06
Leads	9#14
Proprietary	False
Created date	04-01-2019

Efficiency @ 100% Load	89.8 %
Electrically Isolated Bearing	Not Electrically Isolated
Feedback Device	NO FEEDBACK
Haz Area Temp Code	T3C
Heater Indicator	No Heater
High Voltage Full Load Amps	5.5 a
Insulation Class	F
Inverter Code	Inverter Duty
IP Rating	NONE
KVA Code	J
Lifting Lugs	Standard Lifting Lugs
Locked Bearing Indicator	Locked Bearing
Max Speed	1800 rpm
Motor Lead Termination	Flying Leads
Motor Standards	NEMA
Motor Type	0748M
Mounting Arrangement	F1
Number of Poles	6
Overall Length	20.03 IN
Power Factor	74
Product Family	General Purpose
Pulley Face Code	Standard
Rodent Screen	None
RoHS Status	ROHS NON-COMPLIANT
Service Factor	1.00
Shaft Diameter	1.375 IN
Shaft Ground Indicator	No Shaft Grounding
Shaft Rotation	Reversible
Speed	1158 rpm
Speed Code	Single Speed
Starting Method	Direct on line
Thermal Device - Bearing	None
Thermal Device - Winding	Normally Closed Thermostat
Vibration Sensor Indicator	No Vibration Sensor

Winding Thermal 1	None
Winding Thermal 2	None

**Nameplate**

<b>NP1401XPSLEV</b>										
<b>NO.</b>		<b>CC</b>	010A							
<b>S/N</b>		<b>TEMP CODE</b>	T3C							
<b>SPEC.</b>	07-0000-0055		<b>INV.TYPE</b>	PWM						
<b>CAT.NO.</b>	DRX21564T		<b>C HP FR</b>	60	<b>C HP TO</b>	90				
<b>HP</b>	5//3		<b>CT HZ FROM</b>	6	<b>CT HZ TO</b>	60				
<b>VOLTS</b>	230/460//190/380		<b>VT HZ FROM</b>	6	<b>VT HZ TO</b>	60				
<b>AMPS</b>	14.2/7.1//11/5.5		<b>MAG CUR</b>	6.4/3.2						
<b>RPM</b>	1158//965		<b>MX RPM</b>	1800						
<b>HZ</b>	60//50	<b>PH</b>	3	<b>CL</b>	F	<b>NOM.EFF.</b>	89.8			
<b>SER.F.</b>	1.00	<b>DES</b>	B	<b>SL HZ</b>	2	<b>WK2</b>	1.19			
<b>FRAME</b>	215T	<b>RATING</b>	40C AMB-CONT							
	55C AMB @ 1.0 SF									
	1.15 SF SINEWAVE									

**AC Induction Motor Performance Data**

Record # 74889

Typical performance - not guaranteed values

Winding: 07WGY242-R003		Type: 0748M	Enclosure: TEFC			
<b>Nameplate Data</b>			<b>460 V, 60 Hz: High Voltage Connection</b>			
Rated Output (HP)	5//3		Full Load Torque	22.9 LB-FT		
Volts	230/460//190/380		Start Configuration	direct on line		
Full Load Amps	14.2/7.1//11/5.5		Breakdown Torque	68.1 LB-FT		
R.P.M.	1158//965		Pull-up Torque	40.7 LB-FT		
Hz	60//50	Phase	3	Locked-rotor Torque	48.9 LB-FT	
NEMA Design Code	B		KVA Code	J	Starting Current	45.7 A
Service Factor (S.F.)	1		No-load Current	3.19 A		
NEMA Nom. Eff.	89.8	Power Factor	74		Line-line Res. @ 25°C	1.91 Ω
Rating - Duty	40C AMB-CONT		Temp. Rise @ Rated Load	53°C		
			Locked-rotor Power Factor	21.7		
			Rotor inertia	1.19 LB-FT <sup>2</sup>		

**Load Characteristics 460 V, 60 Hz, 5 HP**

% of Rated Load	25	50	75	100	125	150
Power Factor	39	58	69	74	76	76
Efficiency	86.7	90.4	90.9	89.8	88.2	86.1
Speed	1189	1179	1170	1158	1144	1126
Line amperes	3.53	4.38	5.57	7.08	8.71	10.7

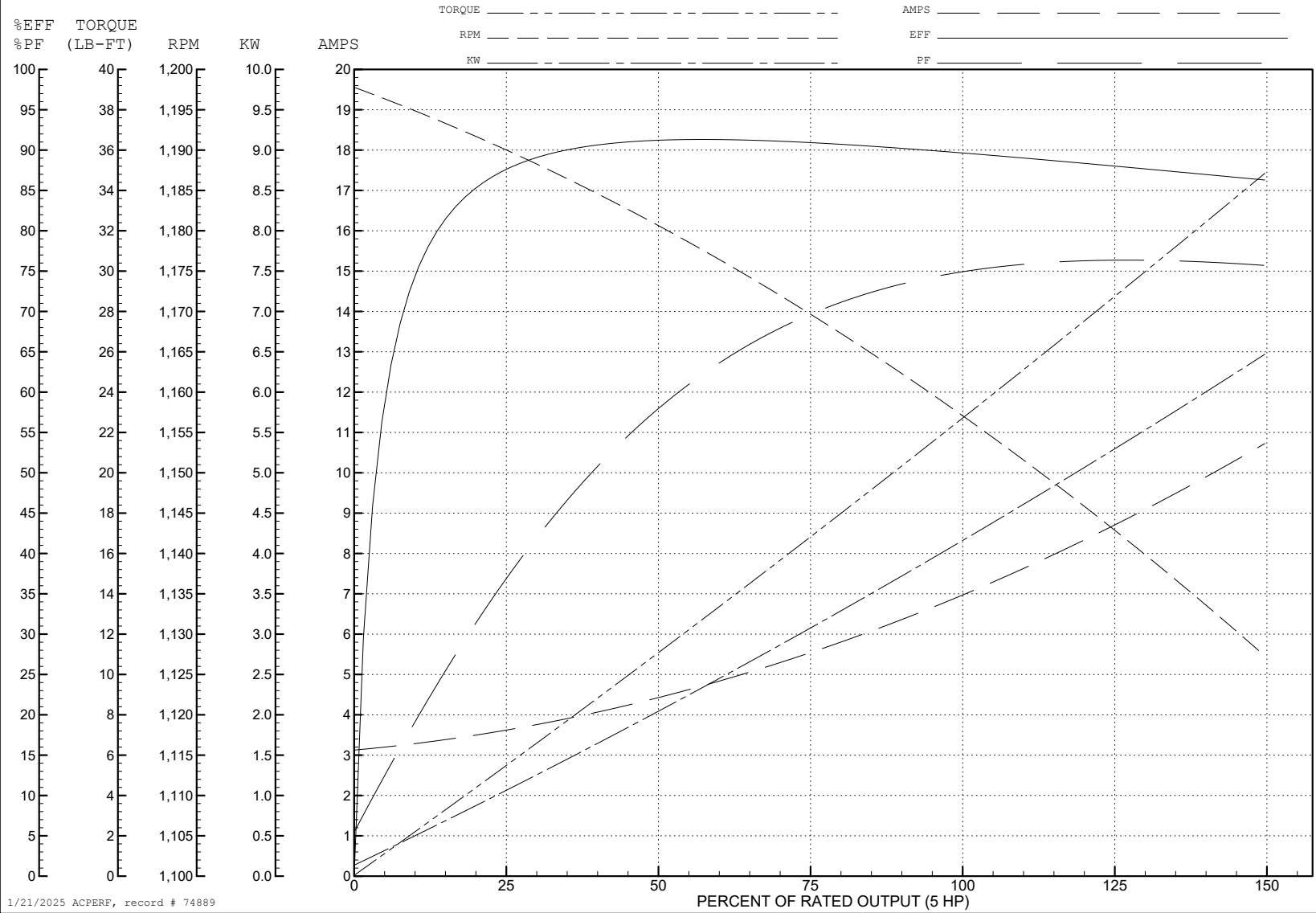
ABB Motors and Mechanical Inc.

WINDING # 07WGY242

5 HP 3 PH 60 HZ 1158 RPM 460 V 0748M

Typical performance - not guaranteed values.

TORQUES (LB-FT): PO=68.1 PU=40.7 LR=48.9 LRA=45.7



1/21/2025 ACPERF, record # 74889

**AC Induction Motor Performance Data**

Record # 74890

Typical performance - not guaranteed values

<b>Winding: 07WGY242-R003</b>		<b>Type: 0748M</b>		<b>Enclosure: TEFC</b>		
<b>Nameplate Data</b>			<b>380 V, 50 Hz: High Voltage Connection</b>			
Rated Output (HP)	5//3		Full Load Torque	16.41 LB-FT		
Volts	230/460//190/380		Start Configuration	direct on line		
Full Load Amps	14.2/7.1//11/5.5		Breakdown Torque	65.64 LB-FT		
R.P.M.	1158//965		Pull-up Torque	44.98 LB-FT		
Hz	60//50	Phase	3	Locked-rotor Torque	54.05 LB-FT	
NEMA Design Code	B		KVA Code	J	Starting Current	44.82 A
Service Factor (S.F.)	1		No-load Current	3.15 A		
NEMA Nom. Eff.	89.8	Power Factor	74	Line-line Res. @ 25°C	1.91 Ω	
Rating - Duty	40C AMB-CONT		Temp. Rise @ Rated Load	36°C		
			Locked-rotor Power Factor	25.1		
			Rotor inertia	1.19 LB-FT <sup>2</sup>		

**Load Characteristics 380 V, 50 Hz, 3 HP**

<b>% of Rated Load</b>	<b>25</b>	<b>50</b>	<b>75</b>	<b>100</b>	<b>125</b>	<b>150</b>
Power Factor	32	50	62	69	74	76
Efficiency	80.8	87.3	89	88.9	88.1	87
Speed	991	984	978	970	961	951
Line amperes	3.36	3.88	4.61	5.57	6.56	7.68

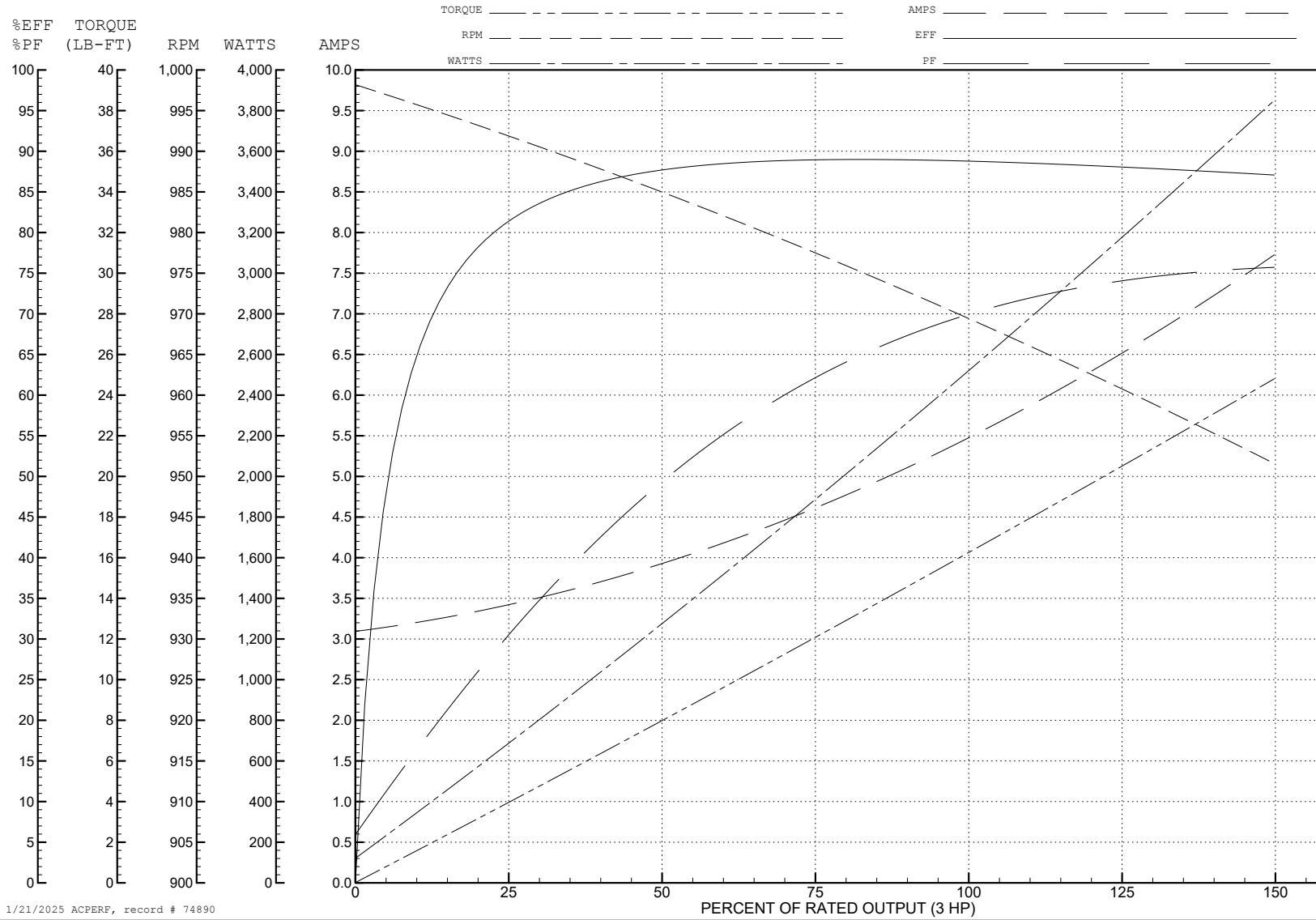
ABB Motors and Mechanical Inc.

WINDING # 07WGY242

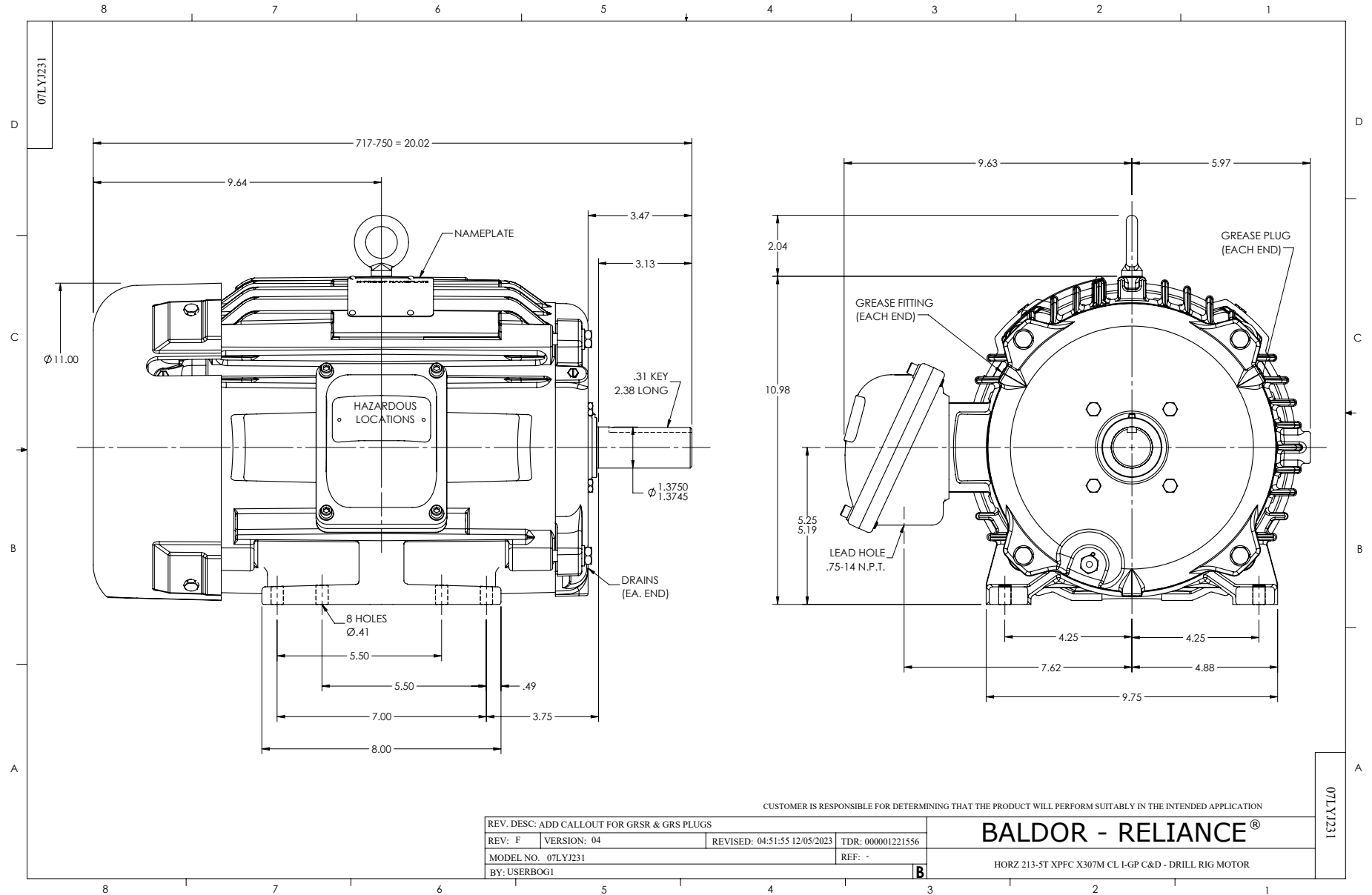
Typical performance - not guaranteed values.

3 HP 3 PH 50 HZ 970 RPM 380 V 0748M

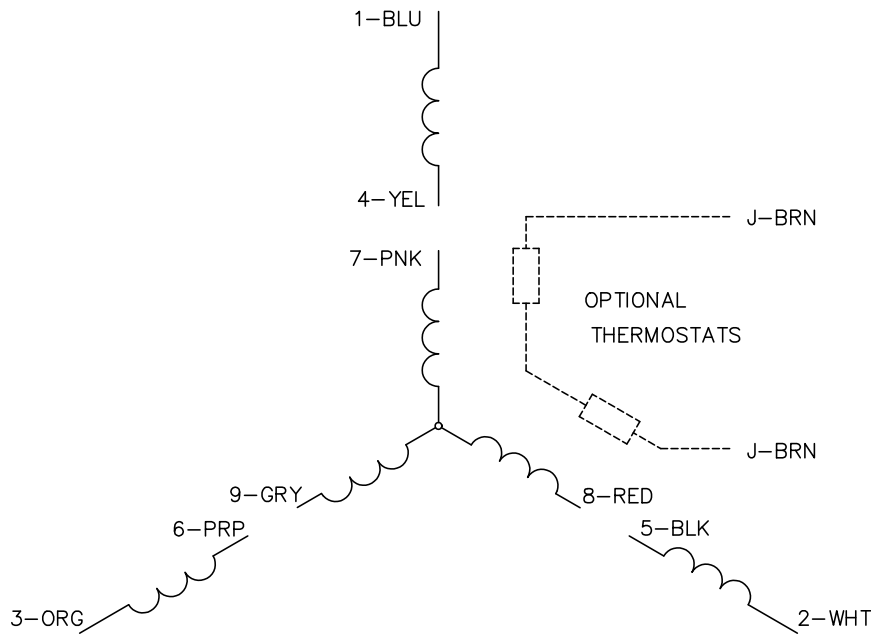
TORQUES (LB-FT): PO=65.64 PU=44.98 LR=54.05 LRA=44.82



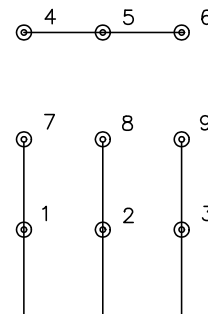
1/21/2025 ACPERF, record # 74890



CD0005

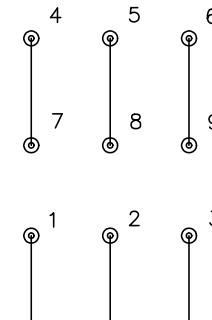


LOW VOLTAGE (2Y)



LINE

HIGH VOLTAGE (1Y)



LINE

NOTES:

1. INTERCHANGE ANY TWO LINE LEADS TO REVERSE ROTATION.
2. OPTIONAL THERMOSTATS ARE PROVIDED WHEN SPECIFIED.
3. ACTUAL NUMBER OF INTERNAL PARALLEL CIRCUITS MAY BE A MULTIPLE OF THOSE SHOWN ABOVE.
4. LEAD COLORS ARE OPTIONAL. LEADS MUST ALWAYS BE NUMBERED AS SHOWN.

CD0005

REV. DESC: REVISE TO SHOW OPTIONAL COLORS			
REV. LTR: E	BY: JLP	REVISED: 01/19/99 10:15	TDR: 0171435
S00000		FILE: AAA00005140	MDL: -
		MTL: -	

**BALDOR ELECTRIC Co.**

3PH, DV, 9 LEADS