

**BALDOR • RELIANCE**

---

# Customer information packet

## ECS100T4H3DB4

3HP, 1800RPM, 3PH, 60HZ, 145TC, 3532B, TEFC, F1

**Part detail**

<b>Revision</b>	A
<b>Type</b>	AC
<b>Mech. spec.</b>	35E5291
<b>Base</b>	
<b>Status</b>	PRD/A
<b>Elec. spec.</b>	35WGG943
<b>Layout</b>	35LYE5291
<b>Eff. date</b>	09-10-2024
<b>CD Diagram</b>	CD0006B03
<b>Poles</b>	04
<b>Leads</b>	3#116 13" LONG LEADS Y
<b>Proprietary</b>	False
<b>Created date</b>	05-08-2024

**Nameplate**

<b>NP3968A01A01</b>									
<b>CAT.NO.</b>	ECS100T4H3DB4								
<b>SPEC.</b>	35E5291G943								
<b>FRAME</b>	145TC	<b>ENCL.</b>	TEFC	<b>IP</b>	54				
<b>HP</b>	3	40	<b>C AMB</b>	CONT					
<b>NOM. EFF.</b>	91	<b>PF</b>	97	<b>SF</b>	1.15				
<b>VOLTS</b>	460		<b>FLA</b>	3.5					
<b>RPM</b>	1800		<b>RPM-MAX</b>	4000					
<b>HZ</b>	60		<b>PH.</b>	3	<b>CLASS</b>	F			
<b>BEMF (V)</b>	267		<b>RS (OHMS)</b>	6.72					
<b>LD (MH)</b>	57.9		<b>LQ (MH)</b>	218					
<b>VPWM</b>	<b>CHP</b>	60	<b>TO</b>	133					
<b>CT</b>	6	<b>TO</b>	60	<b>VT</b>	6	<b>TO</b>	60		
<b>MATCHED INV</b>	ECI4A4P1								
<b>DE</b>	6205		<b>ODE</b>	6203					
<b>SERIAL #</b>									

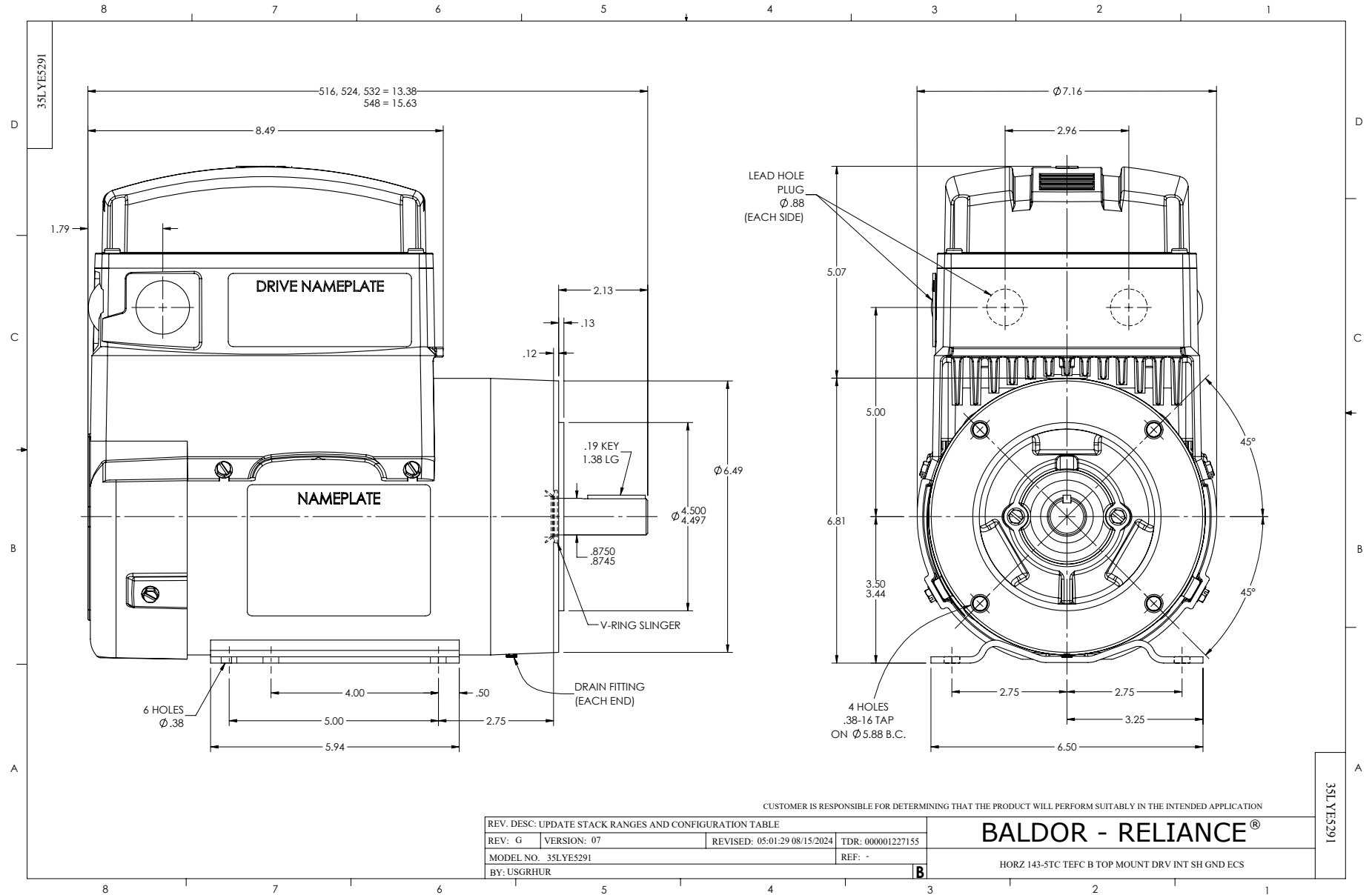
---

**NP3978A01**

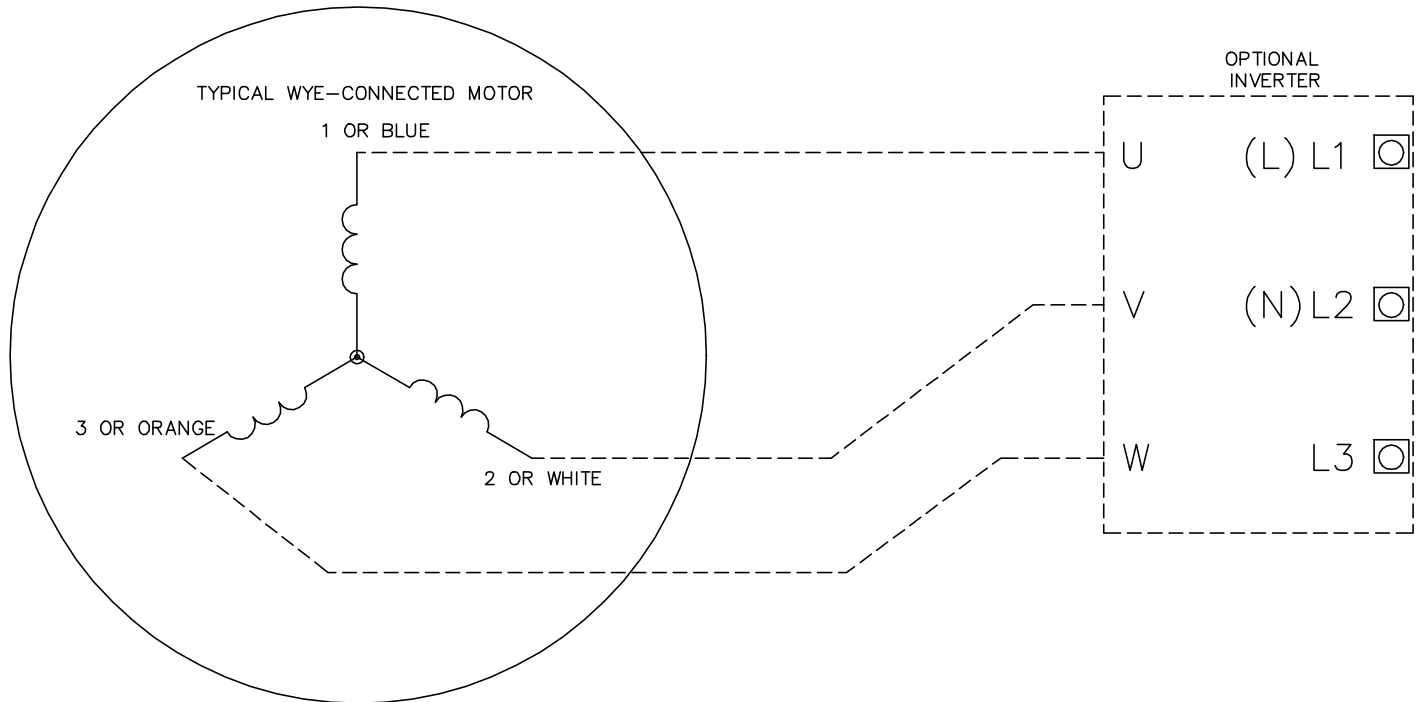
---

<b>PART NO.</b>	ECI4A4P1				
<b>U1</b>	480	<b>PH</b>	3	<b>HZ</b>	60
<b>I1</b>	4.8	<b>W/EXT. CHOKE</b>			4.5
<b>SERIAL #</b>					

---



CD0006B03



**NOTES:**

1. INTERCHANGE ANY TWO LINE LEADS TO REVERSE ROTATION.
2. ACTUAL NUMBER OF INTERNAL PARALLEL CIRCUITS MAY VARY.

CD0006B03

REV. DESC: CHANGE LEAD COLORS TO BLUE WHITE ORANGE		
REV. LTR: A	VERSION: 01	TDR: 000001158598
FILE: \AAA\00252\917	REVISED: 11:01:03 01/19/2021	BY: ENMARSO
MTL: -	© □	

**BALDOR - RELIANCE®**

3PH, SV, 3 LEADS, WYE CONNECTED, ECS

SH 1 of 1