

BALDOR • RELIANCE

Customer information packet

CXT3254T

25HP, 1770RPM, 3PH, 60HZ, 284TC, 1056M, TEFC, F

Class - CLI GP A,B,C,D

Division - Division II

Specifications

Enclosure	TEFC
Frame	284TC
Frame Material	Iron
Frequency	60.00 Hz
Haz Area Class and Group	CLI GP A,B,C,D
Haz Area Division	Division II
Motor Letter Type	Three Phase
Output @ Frequency	25.000 HP @ 60 HZ
Phase	3
Synchronous Speed @ Frequency	1800 RPM @ 60 HZ
Voltage @ Frequency	460.0 V @ 60 HZ 230.0 V @ 60 HZ
Agency Approvals	CCSA US CCSAUSEEV CSA EEV NEMA PREMIUM NEMA_PREMIUM UR
Ambient Temperature	40 °C
Auxillary Box	No Auxillary Box
Auxillary Box Lead Termination	None
Base Indicator	Rigid
Bearing Grease Type	Polyrex EM (-20F +300F)
Blower	None
Constant Torque Speed Range	1
Current @ Voltage	60.000 A @ 230.0 V 64.000 A @ 208.0 V 30.000 A @ 460.0 V
Design Code	B
Drip Cover	No Drip Cover
Duty Rating	CONT
Efficiency @ 100% Load	93.6 %

Part detail

Revision	H
Type	AC
Mech. spec.	
Base	
Status	PRD/A
Elec. spec.	10WGZ624
Layout	10LYC152
Eff. date	06-28-2024
CD Diagram	CD0005
Poles	04
Leads	9#10
Proprietary	False
Created date	08-03-2020

Electrically Isolated Bearing	Not Electrically Isolated
Feedback Device	NO FEEDBACK
Haz Area Temp Code	T3A
Heater Indicator	No Heater
High Voltage Full Load Amps	30.0 a
Insulation Class	F
Inverter Code	Inverter Duty
IP Rating	NONE
KVA Code	F
Lifting Lugs	Standard Lifting Lugs
Locked Bearing Indicator	Locked Bearing
Max Speed	2700 rpm
Motor Lead Termination	Flying Leads
Motor Standards	NEMA
Motor Type	1056M
Mounting Arrangement	F1
Number of Poles	4
Overall Length	27.76 IN
Power Factor	85
Product Family	General Purpose
Pulley Face Code	C-Face
Rodent Screen	None
Service Factor	1.15
Shaft Diameter	1.875 IN
Shaft Ground Indicator	No Shaft Grounding
Shaft Rotation	Reversible
Speed	1770 rpm
Speed Code	Single Speed
Starting Method	Direct on line
Thermal Device - Bearing	None
Thermal Device - Winding	None
Vibration Sensor Indicator	No Vibration Sensor
Winding Thermal 1	None
Winding Thermal 2	None

Nameplate

NP4163L										
CAT.NO.	CXT3254T					I.P.	54			
SPEC.	10-0001435					ENCL	TEFC			
FRAME	284TC		H.P.	25						
VOLTS	230/460		P.F.	85						
F.L. AMPS	60/30		RATING	40C AMB-CONT						
R.P.M.	1770									
HZ.	60		PH.	3		CLASS	F			
SER.F.	1.15		DES.	B		SL HZ	1			
NEMA NOM. EFF.	93.6		WK2	4.46						
DE	6311		ODE	6309						
MAG. CUR.	20.8/10.4									
INV TYPE	PWM	CHP	60		TO	90		T. CODE	T3A	
CT	1	TO	60		VT	O		TO	60	
CC	010A		SN							
USABLE AT 50HZ 20HP 190/380V										
58/29A SF1.0										

AC Induction Motor Performance Data

Record # 62434

Typical performance - not guaranteed values

Winding: 10WGZ624-R002		Type: 1056M	Enclosure: TEFC
Nameplate Data		460 V, 60 Hz: High Voltage Connection	
Rated Output (HP)	25	Full Load Torque	74.31 LB-FT
Volts	460	Start Configuration	direct on line
Full Load Amps	30	Breakdown Torque	197 LB-FT
R.P.M.	1770	Pull-up Torque	91.4 LB-FT
Hz	60 Phase	Locked-rotor Torque	115 LB-FT
NEMA Design Code	B KVA Code	Starting Current	173 A
Service Factor (S.F.)	1	No-load Current	10.4 A
NEMA Nom. Eff.	93.6 Power Factor	Line-line Res. @ 25°C	0.29877 Ω
Rating - Duty	40C AMB-CONT	Temp. Rise @ Rated Load	54°C
		Locked-rotor Power Factor	30.3

Load Characteristics 460 V, 60 Hz, 25 HP

% of Rated Load	25	50	75	100	125	150
Power Factor	51	73	81	85	86	86
Efficiency	91	93.8	94.1	93.7	92.9	91.8
Speed	1792.8	1785.5	1778.9	1770.7	1762.4	1751.5
Line amperes	12.5	17	22.9	29.5	36.5	44.7

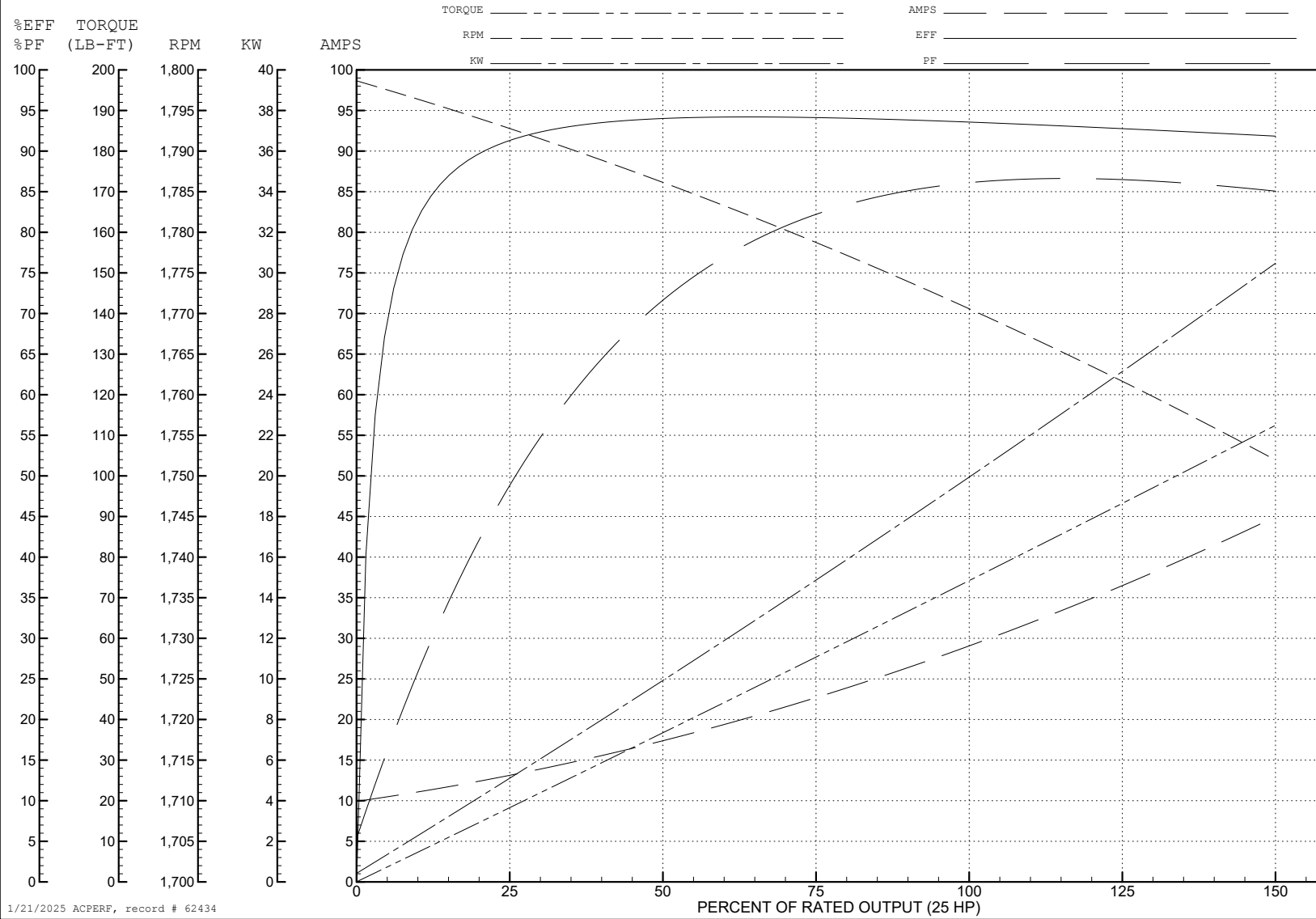
ABB Motors and Mechanical Inc.

WINDING # 10WGZ624

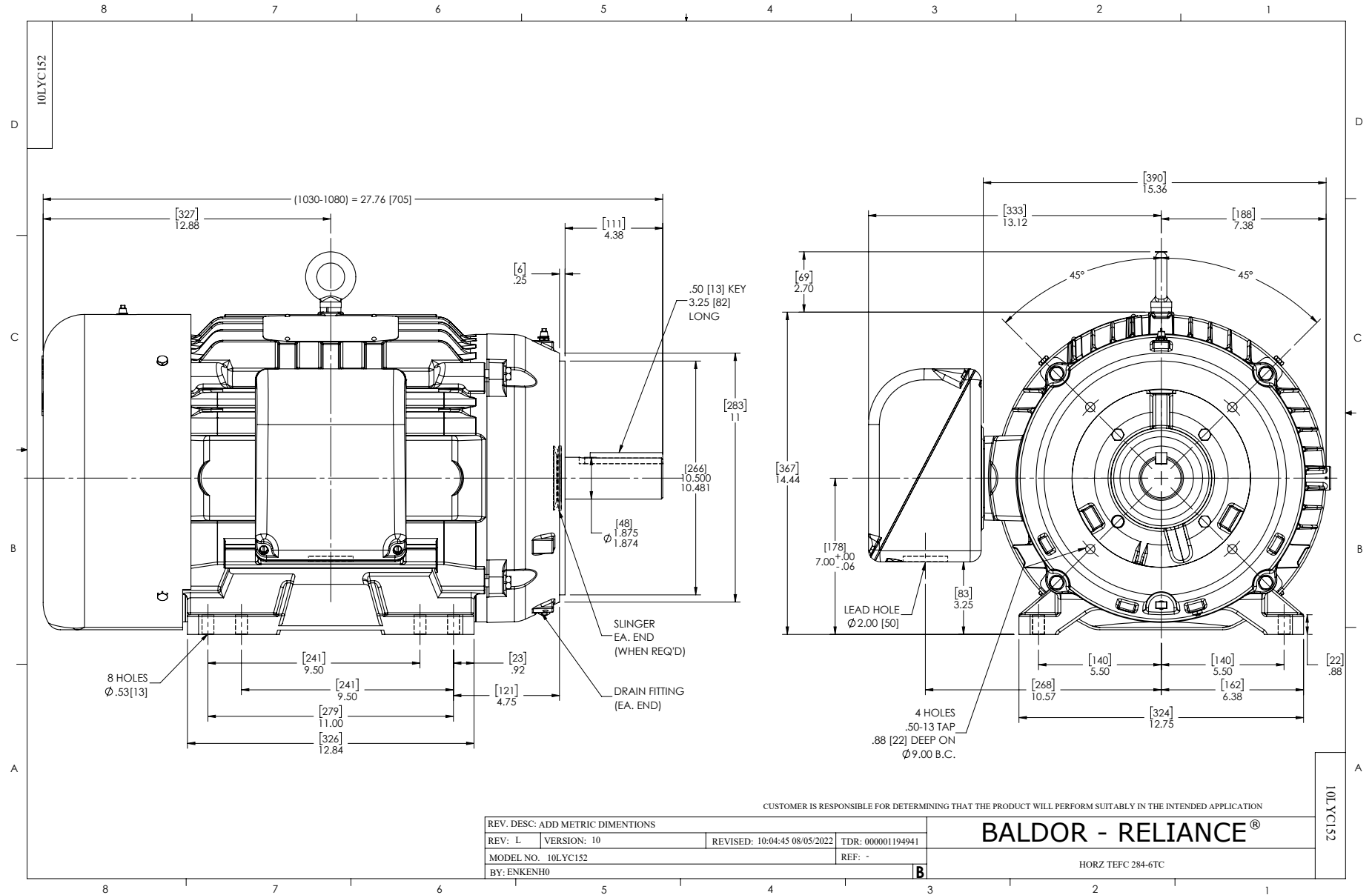
Typical performance - not guaranteed values.

25 HP 3 PH 60 HZ 1770 RPM 460 V 1056M

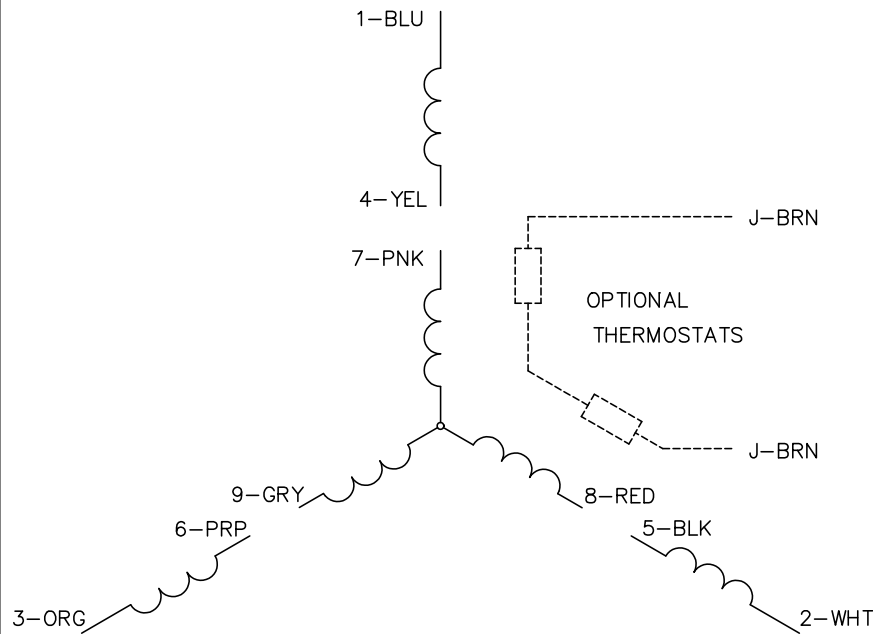
TORQUES (LB-FT): PO=197 PU=91.4 LR=115 LRA=173



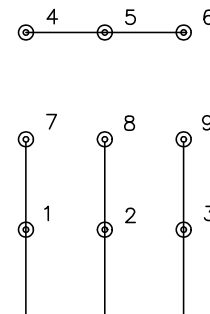
1/21/2025 ACPERF, record # 62434



CD0005

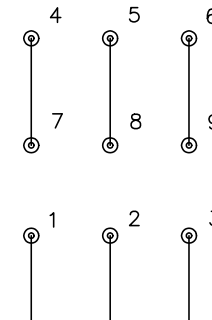


LOW VOLTAGE
(2Y)



LINE

HIGH VOLTAGE
(1Y)



LINE

NOTES:

1. INTERCHANGE ANY TWO LINE LEADS TO REVERSE ROTATION.
2. OPTIONAL THERMOSTATS ARE PROVIDED WHEN SPECIFIED.
3. ACTUAL NUMBER OF INTERNAL PARALLEL CIRCUITS MAY BE A MULTIPLE OF THOSE SHOWN ABOVE.
4. LEAD COLORS ARE OPTIONAL. LEADS MUST ALWAYS BE NUMBERED AS SHOWN.

CD0005

REV. DESC: REVISE TO SHOW OPTIONAL COLORS			
REV. LTR: E	BY: JLP	REVISED: 01/19/99 10:15	TDR: 0171435
S00000		FILE: AAA00005140	MDL: -
		MTL: -	

BALDOR ELECTRIC Co.

3PH, DV, 9 LEADS