

BALDOR • RELIANCE

Customer information packet

CXM25242T

20//15HP, 1770//1470RPM, 3PH, 60//50HZ, 256T

Class - CLI GP D; CLII GP F,G

Division - Division I

Specifications

Enclosure	XPFC
Frame	256TC
Frame Material	Iron
Frequency	50.00 Hz 60.00 Hz
Haz Area Class and Group	CLI GP D; CLII GP F,G
Haz Area Division	Division I
Motor Letter Type	Three Phase
Output @ Frequency	15.000 HP @ 50 HZ 20.000 HP @ 60 HZ
Phase	3
Synchronous Speed @ Frequency	1800 RPM @ 60 HZ
Voltage @ Frequency	380.0 V @ 50 HZ 230.0 V @ 60 HZ 190.0 V @ 50 HZ 460.0 V @ 60 HZ
Agency Approvals	CSA EEV UL
Ambient Temperature	40 °C
Auxillary Box	No Auxillary Box
Auxillary Box Lead Termination	None
Base Indicator	Rigid
Bearing Grease Type	Polyrex EM (-20F +300F)
Blower	None
Constant Torque Speed Range	6
Current @ Voltage	52.000 A @ 208.0 V 48.000 A @ 230.0 V 44.000 A @ 190.0 V 24.000 A @ 460.0 V 22.000 A @ 380.0 V
Design Code	A
Drip Cover	No Drip Cover

Part detail

Revision	D
Type	AC
Mech. spec.	
Base	
Status	PRD/A
Elec. spec.	09WGT459
Layout	09LYE689
Eff. date	11-14-2023
CD Diagram	CD0180
Poles	04
Leads	9#10
Proprietary	False
Created date	02-17-2021

Duty Rating	CONT
Efficiency @ 100% Load	93.0 %
Electrically Isolated Bearing	Not Electrically Isolated
Feedback Device	NO FEEDBACK
Haz Area Temp Code	T3C
Heater Indicator	No Heater
High Voltage Full Load Amps	22.0 a
Insulation Class	F
Inverter Code	Inverter Duty
IP Rating	NONE
KVA Code	J
Lifting Lugs	Standard Lifting Lugs
Locked Bearing Indicator	Locked Bearing
Max Speed	2700 rpm
Motor Lead Termination	Flying Leads
Motor Standards	NEMA
Motor Type	0960M
Mounting Arrangement	F1
Number of Poles	4
Overall Length	26.00 IN
Power Factor	83
Product Family	Hazardous Location Motor
Pulley Face Code	C-Face
Rodent Screen	None
Service Factor	1.00
Shaft Diameter	1.625 IN
Shaft Ground Indicator	No Shaft Grounding
Shaft Rotation	Reversible
Speed	1770 rpm
Speed Code	Single Speed
Starting Method	Direct on line
Thermal Device - Bearing	None
Thermal Device - Winding	Normally Closed Thermostat
Vibration Sensor Indicator	No Vibration Sensor

Winding Thermal 1

None

Winding Thermal 2

None

Nameplate

NP0887XPSLEV

NO.		CC	010A		
S/N		TEMP CODE	T3C		
SPEC.	09-0000-2931	INV.TYPE	PWM		
CAT.NO.	CXM25242T	C HP FR	60	C HP TO	90
HP	20//15	CT HZ FROM	6	CT HZ TO	60
VOLTS	230/460//190/380	VT HZ FROM	6	VT HZ TO	60
AMPS	48/24//44/22	MAG CUR	20.8/10.4		
RPM	1770//1470	MX RPM	2700		
HZ	60//50	PH	3	CL	F
		NOM.EFF.	93		
SER.F.	1.00	DES	A	SL HZ	1
		WK2	2.62		
FRAME	256TC	RATING	40C AMB-CONT		
	NEMA MG-1 PART 5, IP54				
	1.15 SF ON SINE WAVE				

AC Induction Motor Performance Data

Record # 68069

Typical performance - not guaranteed values

Winding: 09WGT459-R010		Type: 0960M		Enclosure: XPFC	
Nameplate Data			460 V, 60 Hz: High Voltage Connection		
Rated Output (HP)	20//15		Full Load Torque	59.27 LB-FT	
Volts	230/460//190/380		Start Configuration	direct on line	
Full Load Amps	48/24//44/22		Breakdown Torque	232 LB-FT	
R.P.M.	1770//1470		Pull-up Torque	126 LB-FT	
Hz	60//50	Phase	3	Locked-rotor Torque	141 LB-FT
NEMA Design Code	A	KVA Code	J	Starting Current	198 A
Service Factor (S.F.)	1.15		No-load Current	10.4 A	
NEMA Nom. Eff.	93	Power Factor	83	Line-line Res. @ 25°C	0.33814 Ω
Rating - Duty	40C AMB-CONT		Temp. Rise @ Rated Load	58°C	
S.F. Amps			Temp. Rise @ S.F. Load	70°C	
			Locked-rotor Power Factor	26.5	

Load Characteristics 460 V, 60 Hz, 20 HP

% of Rated Load	25	50	75	100	125	150	S.F.
Power Factor	45	67	78	83	86	87	85
Efficiency	89.2	93	93.7	93.6	93.1	92.4	93.3
Speed	1793.2	1786.4	1779.1	1771.9	1763.7	1755.3	1767
Line amperes	11.8	15	19.2	24	29.3	34.9	27.2

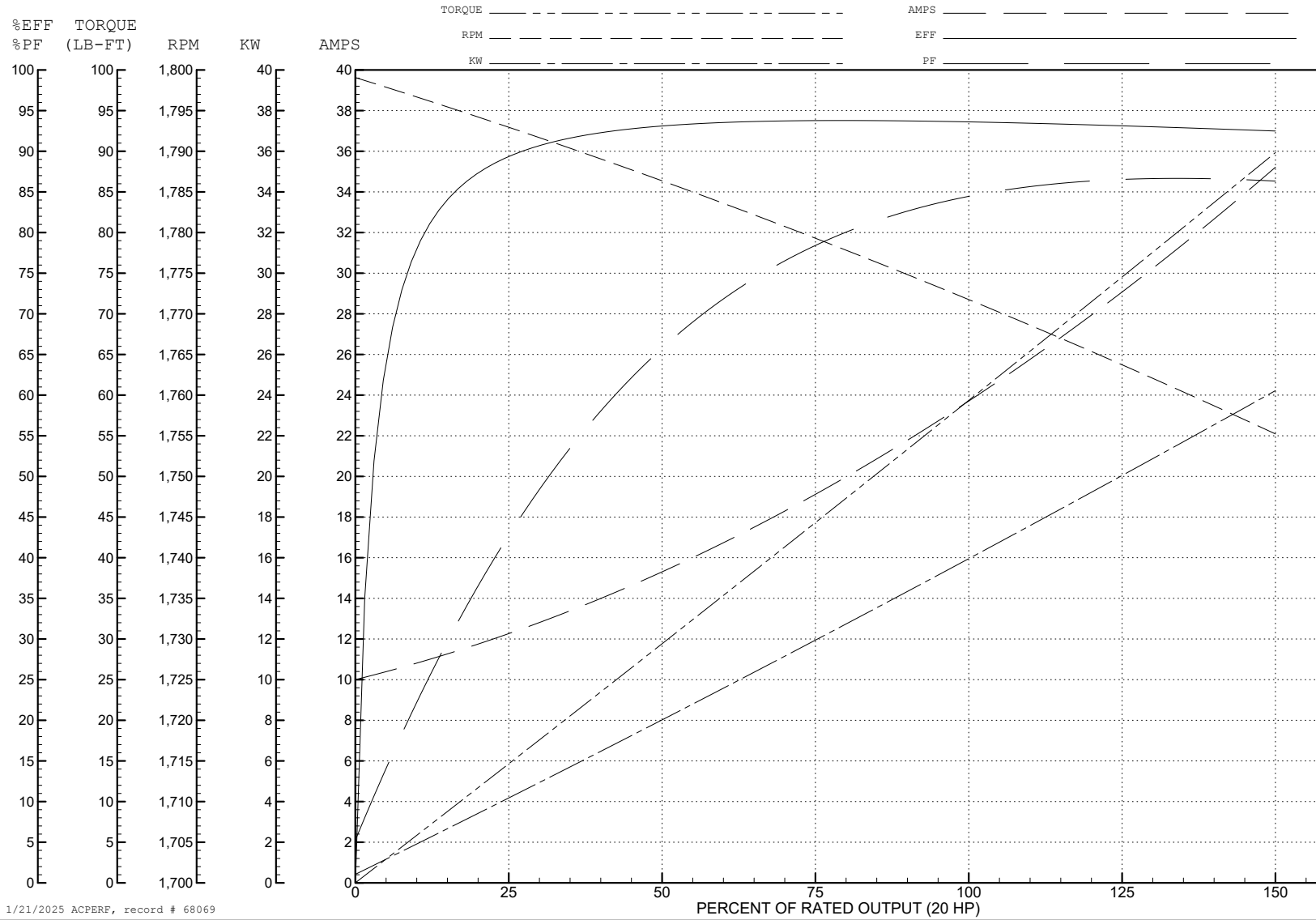
ABB Motors and Mechanical Inc.

WINDING # 09WGT459

Typical performance - not guaranteed values.

20 HP 3 PH 60 HZ 1771.9 RPM 460 V 0960M

TORQUES (LB-FT): PO=232 PU=126 LR=141 LRA=198



1/21/2025 ACPERF, record # 68069

AC Induction Motor Performance Data

Record # 68070

Typical performance - not guaranteed values

Winding: 09WGT459-R010		Type: 0960M		Enclosure: XPFC		
Nameplate Data			380 V, 50 Hz: High Voltage Connection			
Rated Output (HP)	20//15		Full Load Torque	53.45 LB-FT		
Volts	230/460//190/380		Start Configuration	direct on line		
Full Load Amps	48/24//44/22		Breakdown Torque	224 LB-FT		
R.P.M.	1770//1470		Pull-up Torque	131 LB-FT		
Hz	60//50	Phase	3	Locked-rotor Torque	146 LB-FT	
NEMA Design Code	A		KVA Code	J	Starting Current	193 A
Service Factor (S.F.)	1.15		No-load Current	10.16 A		
NEMA Nom. Eff.	93	Power Factor	83	Line-line Res. @ 25°C	0.316 Ω	
Rating - Duty	40C		AMB-CONT	Temp. Rise @ Rated Load	50°C	
S.F. Amps				Temp. Rise @ S.F. Load	61°C	
				Locked-rotor Power Factor	29.3	
				Rotor inertia	2.65 LB-FT ²	

Load Characteristics 380 V, 50 Hz, 15 HP

% of Rated Load	25	50	75	100	125	150	S.F.
Power Factor	43	66	77	83	86	87	85
Efficiency	88	92.2	93.1	93.1	92.5	91.8	92.7
Speed	1494	1488	1481	1475	1467	1460	1470
Line amperes	11.32	14.06	17.76	22.07	26.82	31.83	24.9

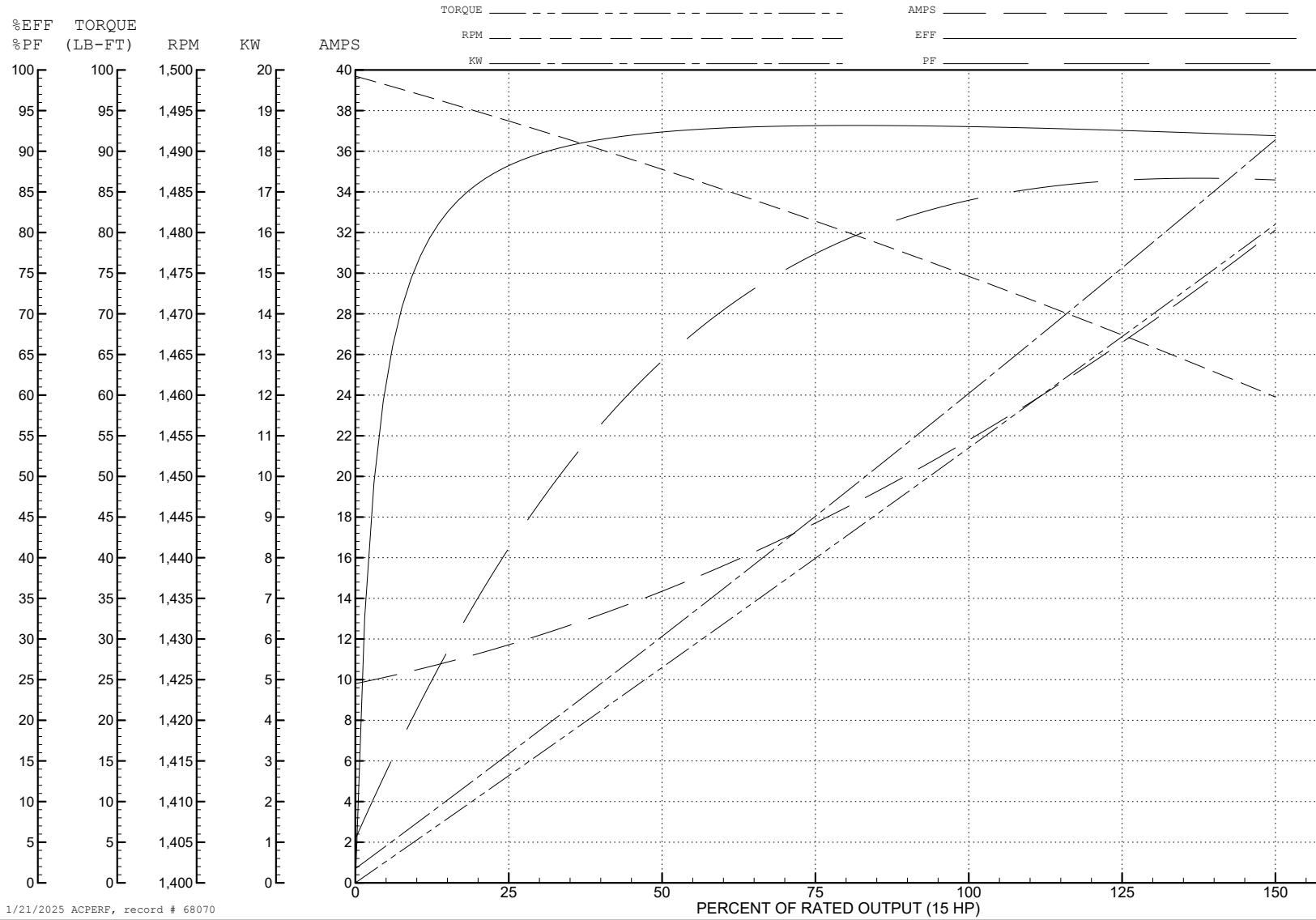
ABB Motors and Mechanical Inc.

WINDING # 09WGT459

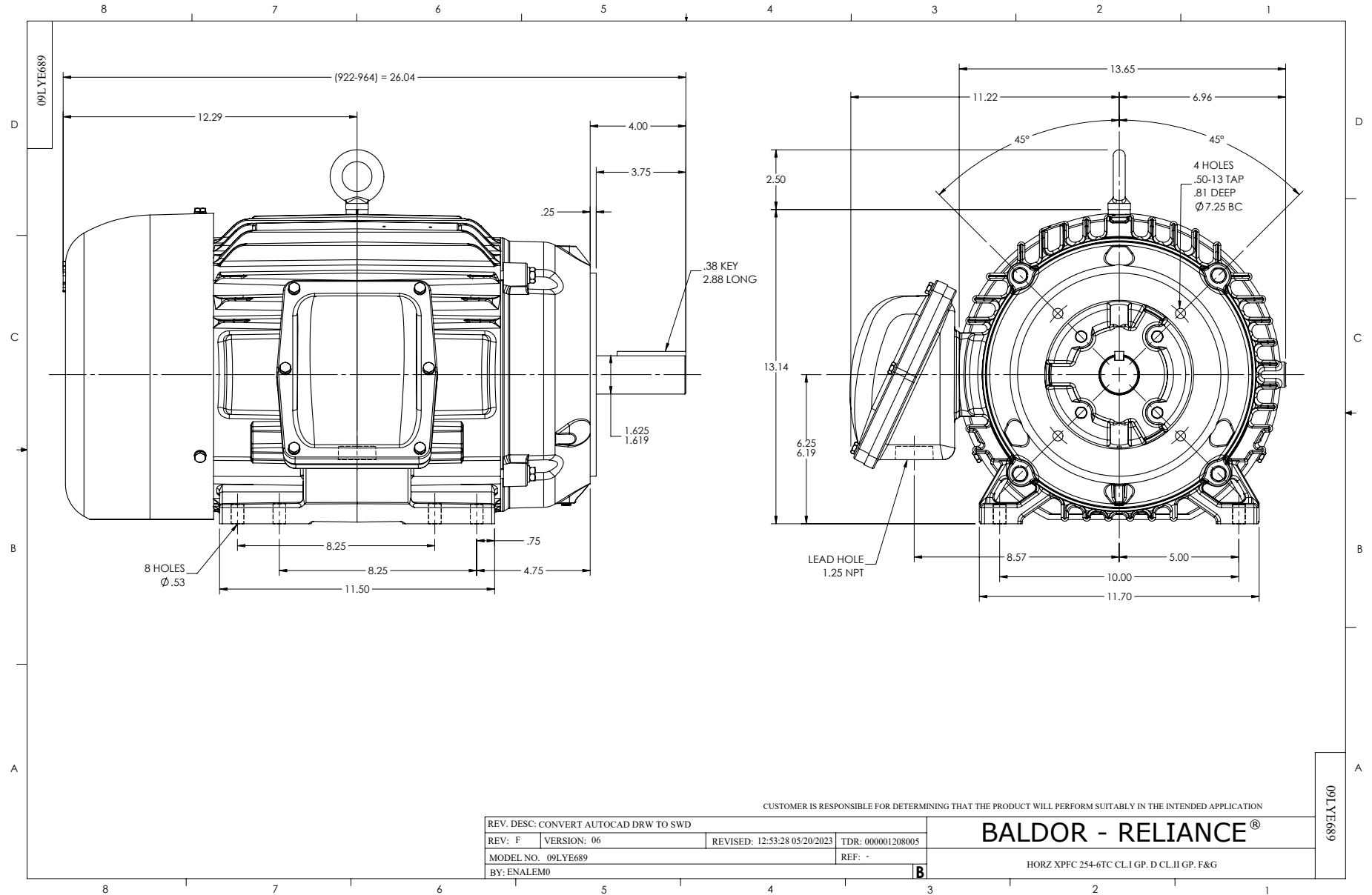
Typical performance - not guaranteed values.

15 HP 3 PH 50 HZ 1475 RPM 380 V 0960M

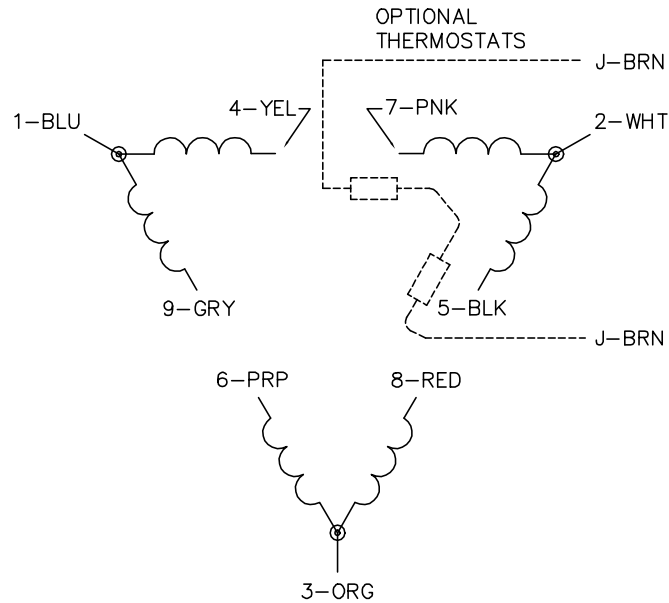
TORQUES (LB-FT): PO=224 PU=131 LR=146 LRA=193



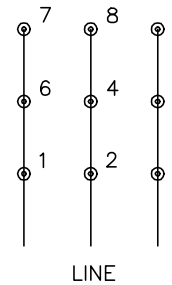
1/21/2025 ACPERF, record # 68070



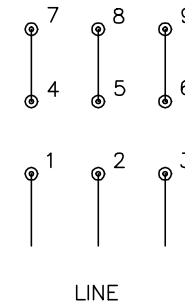
CD0180



LOW VOLTAGE
(2D)



HIGH VOLTAGE
(1D)



NOTES:

1. INTERCHANGE ANY TWO LINE LEADS TO REVERSE ROTATION.
2. OPTIONAL THERMOSTATS ARE PROVIDED WHEN SPECIFIED.
3. ACTUAL NUMBER OF INTERNAL PARALLEL CIRCUITS MAY BE A MULTIPLE OF THOSE SHOWN ABOVE.
4. LEAD COLORS ARE OPTIONAL. LEADS MUST ALWAYS BE NUMBERED AS SHOWN.

CD0180

REV. DESC: ADD CLASS CONN00000007		
REV. LTR: D	VERSION: 01	TDR: 000001099922
FILE: \AAA\00005\148	REVISED: 10:25:29 02/19/2019	BY: ENBRIRO
MTL: -	© □	

BALDOR - RELIANCE®

3PH, DV, 9 LEADS, DELTA CONNECTION

SH 1 of 1