

**BALDOR • RELIANCE**

---

# Customer information packet

## CEWDM3702T

2HP, 865RPM, 3PH, 60HZ, 213TC, TEFC, F1

Class - None

Division - Not Applicable

## Specifications

Enclosure	TEFC
Frame	213TC
Frame Material	Steel
Frequency	60.00 Hz
Haz Area Class and Group	None
Haz Area Division	Not Applicable
Motor Letter Type	Three Phase
Output @ Frequency	2.000 HP @ 60 HZ
Phase	3
Synchronous Speed @ Frequency	900 RPM @ 60 HZ
Voltage @ Frequency	230.0 V @ 60 HZ 460.0 V @ 60 HZ
Agency Approvals	CSA CSA EEV NEMA PREMIUM UR
Ambient Temperature	40 °C
Auxillary Box	No Auxillary Box
Auxillary Box Lead Termination	None
Base Indicator	Rigid
Bearing Grease Type	Polyrex EM (-20F +300F)
Blower	None
Current @ Voltage	3.500 A @ 460.0 V 7.000 A @ 230.0 V
Design Code	B
Drip Cover	No Drip Cover
Duty Rating	CONT
Efficiency @ 100% Load	85.5 %
Electrically Isolated Bearing	Not Electrically Isolated
Feedback Device	NO FEEDBACK
Heater Indicator	No Heater
High Voltage Full Load Amps	3.5 a

## Part detail

Revision	B
Type	AC
Mech. spec.	
Base	
Status	PRD/A
Elec. spec.	37WGR734
Layout	37LYE599
Eff. date	02-14-2024
CD Diagram	CD0005
Poles	08
Leads	9#14
Proprietary	False
Created date	12-02-2019

<b>Insulation Class</b>	F
<b>Inverter Code</b>	Inverter Ready
<b>KVA Code</b>	J
<b>Lifting Lugs</b>	Standard Lifting Lugs
<b>Locked Bearing Indicator</b>	Locked Bearing
<b>Motor Lead Termination</b>	Flying Leads
<b>Motor Standards</b>	NEMA
<b>Motor Type</b>	3744M
<b>Mounting Arrangement</b>	F1
<b>Number of Poles</b>	8
<b>Overall Length</b>	19.78 IN
<b>Power Factor</b>	61
<b>Product Family</b>	Wash Down
<b>Pulley Face Code</b>	C-Face
<b>Rodent Screen</b>	None
<b>Service Factor</b>	1.15
<b>Shaft Diameter</b>	1.375 IN
<b>Shaft Ground Indicator</b>	No Shaft Grounding
<b>Shaft Rotation</b>	Reversible
<b>Speed</b>	865 rpm
<b>Speed Code</b>	Single Speed
<b>Starting Method</b>	Direct on line
<b>Thermal Device - Bearing</b>	None
<b>Thermal Device - Winding</b>	None
<b>Vibration Sensor Indicator</b>	No Vibration Sensor
<b>Winding Thermal 1</b>	None
<b>Winding Thermal 2</b>	None

**Nameplate**

<b>NP1669L</b>									
<b>CAT.NO.</b>	CEWDM3702T								
<b>SPEC.</b>	37-0000-0165								
<b>HP</b>	2								
<b>VOLTS</b>	230/460								
<b>AMP</b>	7/3.5								
<b>RPM</b>	865								
<b>FRAME</b>	213TC		<b>HZ</b>	60		<b>PH</b>	3		
<b>SER.F.</b>	1.15	<b>CODE</b>	J	<b>DES</b>	B	<b>CLASS</b>	F		
<b>NEMA-NOM-EFF</b>	85.5	<b>PF</b>	61						
<b>RATING</b>	40C AMB-CONT								
<b>CC</b>	010A								
<b>DE</b>	6307	<b>ODE</b>	6206						
<b>ENCL</b>	TEFC	<b>SN</b>							
<b>BLANK</b>	10:1 CT, 10:1 VT, 1.00SF								

**AC Induction Motor Performance Data**

Record # 57476

Typical performance - not guaranteed values

<b>Winding: 37WGR734-R003</b>		<b>Type: 3744M</b>		<b>Enclosure: TEFC</b>	
<b>Nameplate Data</b>			<b>460 V, 60 Hz: High Voltage Connection</b>		
<b>Rated Output (HP)</b>	2	<b>Full Load Torque</b>	12.2 LB-FT		
<b>Volts</b>	230/460	<b>Start Configuration</b>	direct on line		
<b>Full Load Amps</b>	7/3.5	<b>Breakdown Torque</b>	36.2 LB-FT		
<b>R.P.M.</b>	865	<b>Pull-up Torque</b>	20.1 LB-FT		
<b>Hz</b>	60	<b>Locked-rotor Torque</b>	22.2 LB-FT		
<b>NEMA Design Code</b>	B	<b>Starting Current</b>	18.7 A		
<b>Service Factor (S.F.)</b>	1.15	<b>No-load Current</b>	2.25 A		
<b>NEMA Nom. Eff.</b>	85.5	<b>Line-line Res. @ 25°C</b>	4.59 Ω		
<b>Rating - Duty</b>	40C AMB-CONT	<b>Temp. Rise @ Rated Load</b>	22°C		
<b>S.F. Amps</b>		<b>Temp. Rise @ S.F. Load</b>	26°C		
		<b>Locked-rotor Power Factor</b>	32.5		
		<b>Rotor inertia</b>	1.09 LB-FT <sup>2</sup>		

**Load Characteristics 460 V, 60 Hz, 2 HP**

<b>% of Rated Load</b>	<b>25</b>	<b>50</b>	<b>75</b>	<b>100</b>	<b>125</b>	<b>150</b>	<b>S.F.</b>
<b>Power Factor</b>	26	42	53	61	65	69	63
<b>Efficiency</b>	77.6	84.9	86.8	87.3	85.9	83.9	86.5
<b>Speed</b>	892	885	877	868	857	846	861
<b>Line amperes</b>	2.37	2.65	3.06	3.57	4.16	4.86	3.92

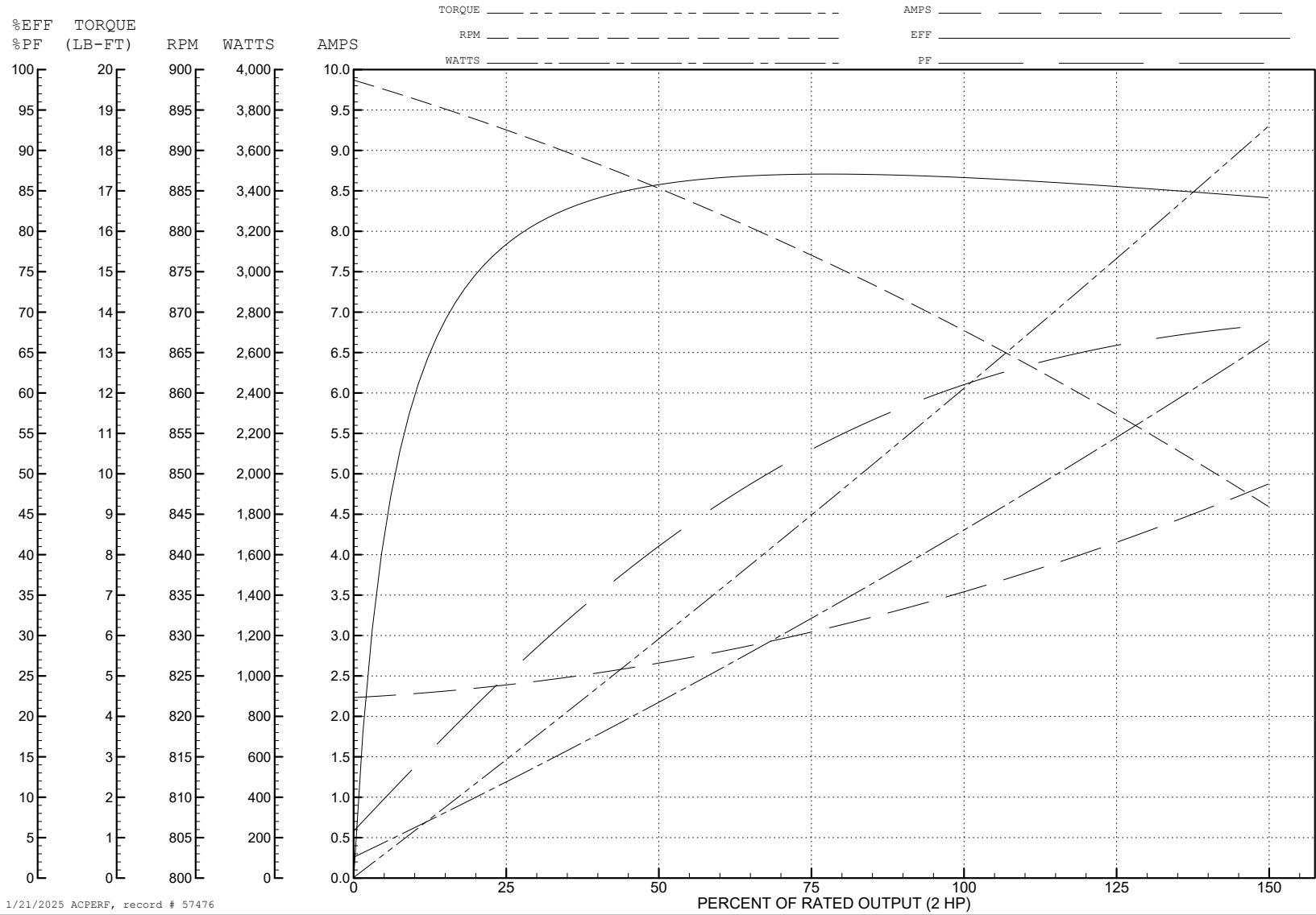
ABB Motors and Mechanical Inc.

WINDING # 37WGR734

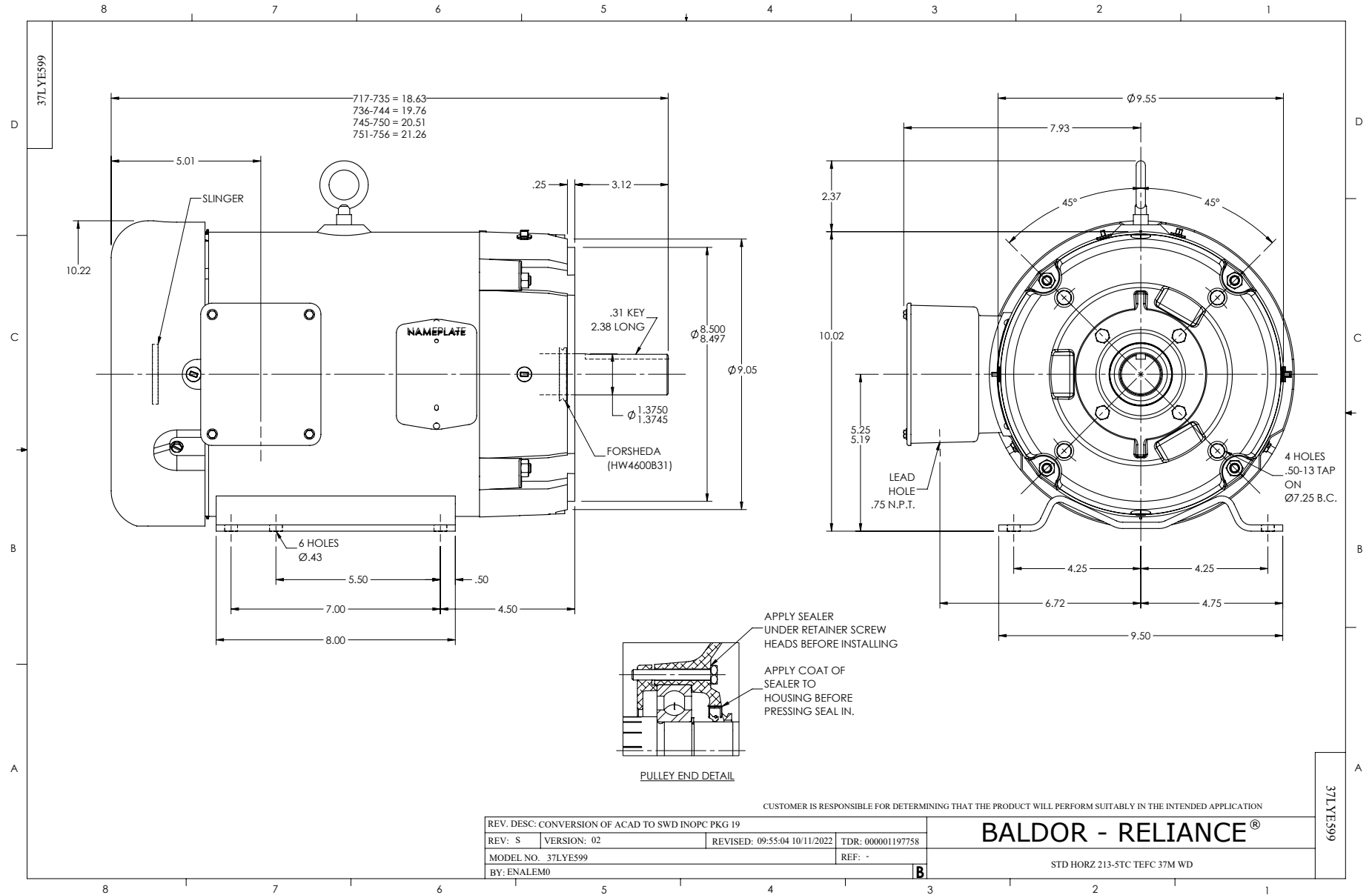
Typical performance - not guaranteed values.

2 HP 3 PH 60 HZ 865 RPM 460 V 3744M

TORQUES (LB-FT): PO=36.2 PU=20.1 LR=22.2 LRA=18.7



1/21/2025 ACPERF, record # 57476



CD0005



LOW VOLTAGE (2Y)



LINE

HIGH VOLTAGE (1Y)



LINE

NOTES:

1. INTERCHANGE ANY TWO LINE LEADS TO REVERSE ROTATION.
2. OPTIONAL THERMOSTATS ARE PROVIDED WHEN SPECIFIED.
3. ACTUAL NUMBER OF INTERNAL PARALLEL CIRCUITS MAY BE A MULTIPLE OF THOSE SHOWN ABOVE.
4. LEAD COLORS ARE OPTIONAL. LEADS MUST ALWAYS BE NUMBERED AS SHOWN.

CD0005

REV. DESC: REVISE TO SHOW OPTIONAL COLORS			
REV. LTR: E	BY: JLP	REVISED: 01/19/99 10:15	TDR: 0171435
S00000		FILE: AAA00005140	MDL: -
		MTL: -	

BALDOR ELECTRIC Co.

3PH, DV, 9 LEADS