



Customer information packet

CDRX21144T

10HP, 1765//1465RPM, 3PH, 60HZ, 215TC, XPFC, F
Class - CLI GP C,D
Division - Division I

Specifications

Enclosure	XPFC
Frame	215TC
Frame Material	Iron
Frequency	50.00 Hz 60.00 Hz
Haz Area Class and Group	CLI GP C,D
Haz Area Division	Division I
Motor Letter Type	Three Phase
Output @ Frequency	7.500 HP @ 50 HZ 10.000 HP @ 60 HZ
Phase	3
Synchronous Speed @ Frequency	1800 RPM @ 60 HZ
Voltage @ Frequency	460.0 V @ 60 HZ 190.0 V @ 50 HZ 230.0 V @ 60 HZ 380.0 V @ 50 HZ
Agency Approvals	UL CSA EEV
Ambient Temperature	40 °C
Auxillary Box	No Auxillary Box
Auxillary Box Lead Termination	None
Base Indicator	Rigid
Bearing Grease Type	Polyrex EM (-20F +300F)
Blower	None
Constant Torque Speed Range	6
Current @ Voltage	11.600 A @ 380.0 V 12.500 A @ 460.0 V 23.200 A @ 190.0 V 25.000 A @ 230.0 V
Design Code	A
Drip Cover	No Drip Cover
Duty Rating	CONT

Part detail

Revision	D
Type	AC
Mech. spec.	
Base	
Status	PRD/A
Elec. spec.	07WGX598
Layout	07LYJ232
Eff. date	02-14-2024
CD Diagram	CD0005
Poles	04
Leads	9#14
Proprietary	False
Created date	06-21-2019

Efficiency @ 100% Load	91.7 %
Electrically Isolated Bearing	Not Electrically Isolated
Feedback Device	NO FEEDBACK
Haz Area Temp Code	T3C
Heater Indicator	No Heater
High Voltage Full Load Amps	11.6 a
Insulation Class	F
Inverter Code	Inverter Duty
IP Rating	NONE
KVA Code	J
Lifting Lugs	Standard Lifting Lugs
Locked Bearing Indicator	Locked Bearing
Max Speed	2700 rpm
Motor Lead Termination	Flying Leads
Motor Standards	NEMA
Motor Type	0750M
Mounting Arrangement	F1
Number of Poles	4
Overall Length	20.78 IN
Power Factor	81
Product Family	General Purpose
Pulley Face Code	C-Face
Rodent Screen	None
RoHS Status	ROHS NON-COMPLIANT
Service Factor	1.00
Shaft Diameter	1.375 IN
Shaft Ground Indicator	No Shaft Grounding
Shaft Rotation	Reversible
Speed	1765 rpm
Speed Code	Single Speed
Starting Method	Direct on line
Thermal Device - Bearing	None
Thermal Device - Winding	Normally Closed Thermostat
Vibration Sensor Indicator	No Vibration Sensor

Winding Thermal 1

None

Winding Thermal 2

None

AC Induction Motor Performance Data

Record # 39054

Typical performance - not guaranteed values

Winding: 07WGX598-R007		Type: 0750M		Enclosure: XPFC	
Nameplate Data			460 V, 60 Hz: High Voltage Connection		
Rated Output (HP)	10//7.5		Full Load Torque	29.7 LB-FT	
Volts	230/460//190/380		Start Configuration	direct on line	
Full Load Amps	24.6/12.3//23/11.5		Breakdown Torque	94.2 LB-FT	
R.P.M.	1765//1465		Pull-up Torque	56.3 LB-FT	
Hz	60//50	Phase	3	Locked-rotor Torque	62.4 LB-FT
NEMA Design Code	A	KVA Code	J	Starting Current	95.7 A
Service Factor (S.F.)	1.15		No-load Current	5.6 A	
NEMA Nom. Eff.	92.4	Power Factor	81	Line-line Res. @ 25°C	0.867 Ω
Rating - Duty	40C AMB-CONT		Temp. Rise @ Rated Load	55°C	
S.F. Amps			Temp. Rise @ S.F. Load	70°C	
			Locked-rotor Power Factor	35	
			Rotor inertia	1.23 LB-FT ²	

Load Characteristics 460 V, 60 Hz, 10 HP

% of Rated Load	25	50	75	100	125	150	S.F.
Power Factor	41	64	76	81	84	85	83
Efficiency	89.8	93.6	92.6	92.4	91.3	90.2	91.7
Speed	1790	1782	1772	1764	1753	1743	1757
Line amperes	6.28	7.9	10	12.5	15.3	18.3	14.2

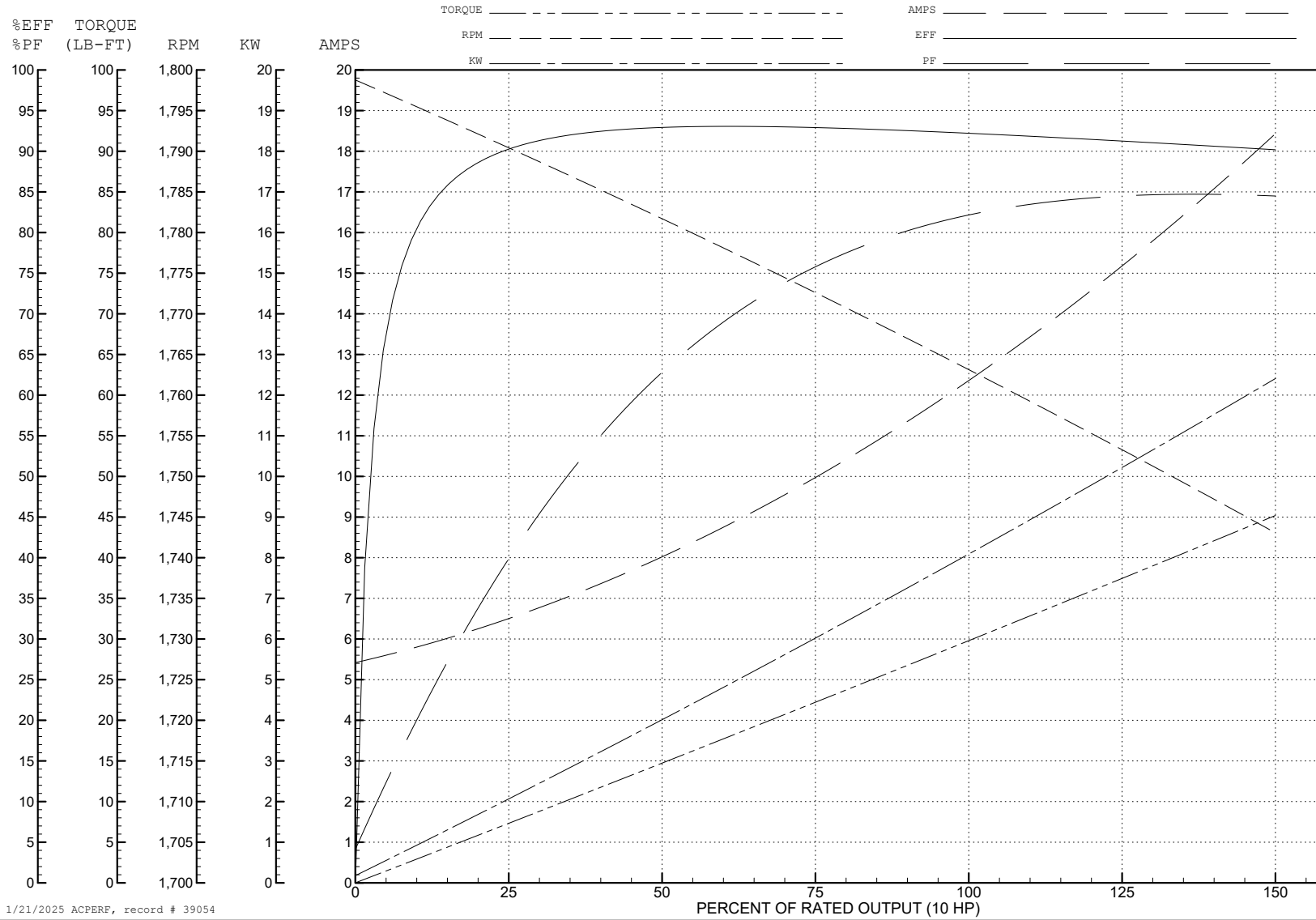
ABB Motors and Mechanical Inc.

WINDING # 07WGX598

Typical performance - not guaranteed values.

10 HP 3 PH 60 HZ 1764 RPM 460 V 0750M

TORQUES (LB-FT): PO=94.2 PU=56.3 LR=62.4 LRA=95.7



1/21/2025 ACPERF, record # 39054

AC Induction Motor Performance Data

Record # 73683

Typical performance - not guaranteed values

Winding: 07WGX598-R015		Type: 0750M		Enclosure: XPFC		
Nameplate Data			460 V, 60 Hz: High Voltage Connection			
Rated Output (HP)	10//7.5		Full Load Torque	29.7 LB-FT		
Volts	230/460//190/380		Start Configuration	direct on line		
Full Load Amps	25/12.5//23.2/11.6		Breakdown Torque	94.2 LB-FT		
R.P.M.	1765//1465		Pull-up Torque	56.3 LB-FT		
Hz	60//50	Phase	3	Locked-rotor Torque	62.4 LB-FT	
NEMA Design Code	A		KVA Code	J	Starting Current	95.7 A
Service Factor (S.F.)	1			No-load Current	5.6 A	
NEMA Nom. Eff.	91.7	Power Factor	81	Line-line Res. @ 25°C	0.866 Ω	
Rating - Duty	40C AMB-CONT			Temp. Rise @ Rated Load	55°C	
				Locked-rotor Power Factor	35.2	
				Rotor inertia	1.23 LB-FT ²	

Load Characteristics 460 V, 60 Hz, 10 HP

% of Rated Load	25	50	75	100	125	150
Power Factor	41	64	76	81	84	85
Efficiency	89.8	93.5	92.5	92.2	91.3	90.1
Speed	1790	1782	1772	1764	1753	1743
Line amperes	6.28	7.9	10	12.5	15.3	18.3

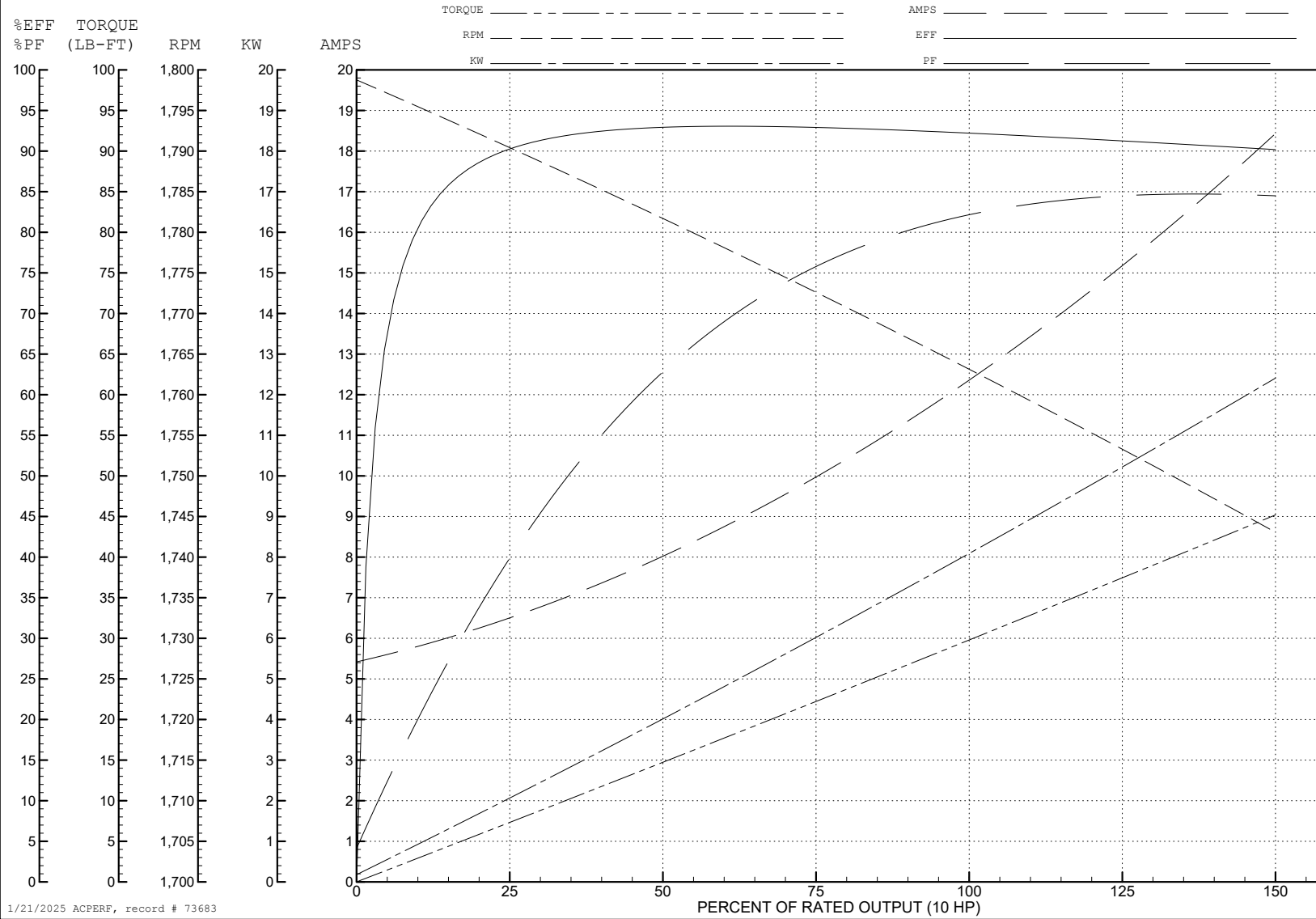
ABB Motors and Mechanical Inc.

WINDING # 07WGX598

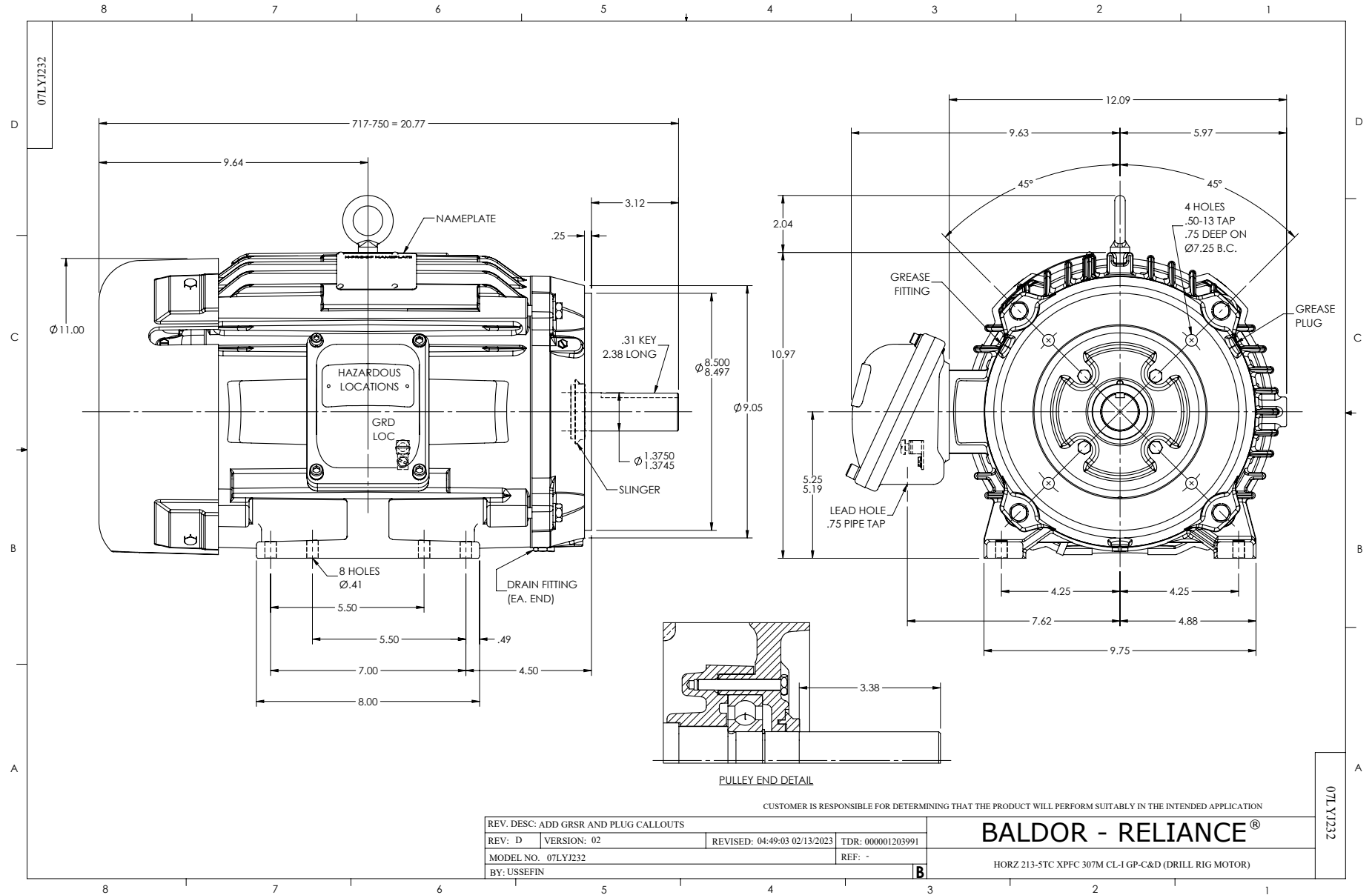
Typical performance - not guaranteed values.

10 HP 3 PH 60 HZ 1764 RPM 460 V 0750M

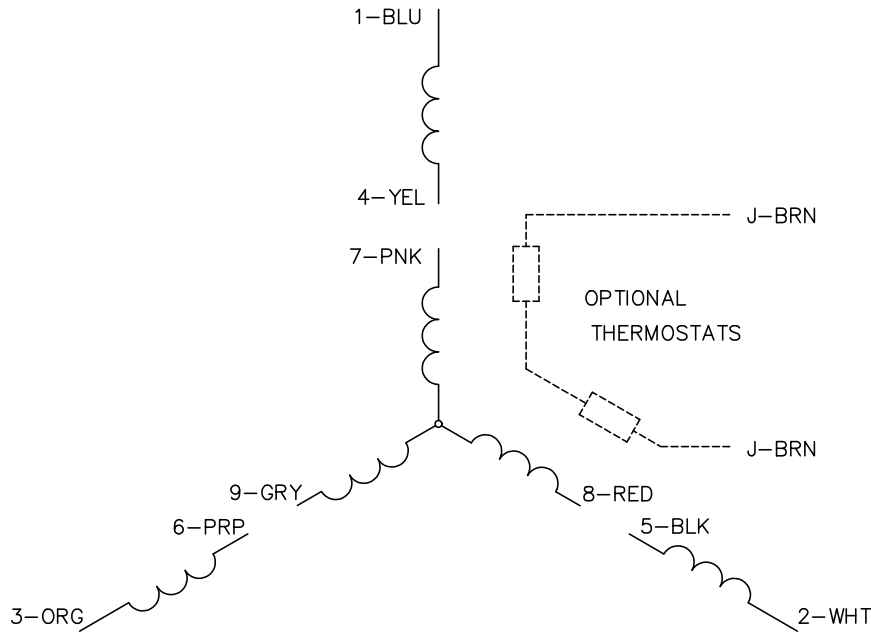
TORQUES (LB-FT): PO=94.2 PU=56.3 LR=62.4 LRA=95.7



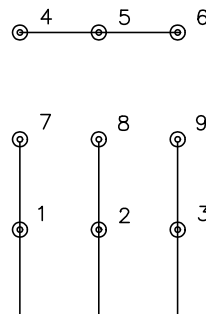
1/21/2025 ACPERF, record # 73683



CD0005

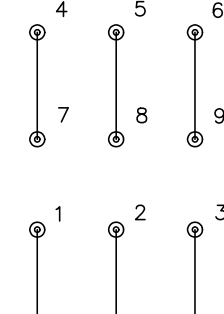


LOW VOLTAGE
(2Y)



LINE

HIGH VOLTAGE
(1Y)



LINE

NOTES:

1. INTERCHANGE ANY TWO LINE LEADS TO REVERSE ROTATION.
2. OPTIONAL THERMOSTATS ARE PROVIDED WHEN SPECIFIED.
3. ACTUAL NUMBER OF INTERNAL PARALLEL CIRCUITS MAY BE A MULTIPLE OF THOSE SHOWN ABOVE.
4. LEAD COLORS ARE OPTIONAL. LEADS MUST ALWAYS BE NUMBERED AS SHOWN.

CD0005

REV. DESC: REVISE TO SHOW OPTIONAL COLORS			
REV. LTR: E	BY: JLP	REVISED: 01/19/99 10:15	TDR: 0171435
S00000		FILE: AAA00005140	MDL: -
		MTL: -	

BALDOR ELECTRIC Co.

3PH, DV, 9 LEADS