



Customer information packet

CCPX21746T

7.5HP, 1770//1470RPM, 3PH, 60HZ, 213TCY, XPFC

Class - CLI GP C,D; CLII GP E,F,G

Division - Division I

Specifications

| | |
|--------------------------------|---|
| Enclosure | XPFC |
| Frame | 213TCY |
| Frame Material | Iron |
| Frequency | 50.00 Hz 60.00 Hz |
| Haz Area Class and Group | CLI GP C,D; CLII GP E,F,G |
| Haz Area Division | Division I |
| Motor Letter Type | Three Phase |
| Output @ Frequency | 5.000 HP @ 50 HZ 7.500 HP @ 60 HZ |
| Phase | 3 |
| Synchronous Speed @ Frequency | 1800 RPM @ 60 HZ |
| Voltage @ Frequency | 230.0 V @ 60 HZ 190.0 V @ 50 HZ 460.0 V @ 60 HZ 380.0 V @ 50 HZ |
| Agency Approvals | UL CSA EEV |
| Ambient Temperature | 40 °C |
| Auxillary Box | No Auxillary Box |
| Auxillary Box Lead Termination | None |
| Base Indicator | Rigid |
| Bearing Grease Type | Polyrex EM (-20F +300F) |
| Blower | None |
| Constant Torque Speed Range | 6 |
| Current @ Voltage | 8.700 A @ 380.0 V 20.200 A @ 230.0 V 17.400 A @ 190.0 V 10.100 A @ 460.0 V |
| Design Code | A |
| Drip Cover | No Drip Cover |
| Duty Rating | CONT |

Part detail

| | |
|--------------|--------------|
| Revision | C |
| Type | AC |
| Mech. spec. | |
| Base | |
| Status | PRD/A |
| Elec. spec. | 07WGR561 |
| Layout | 07LY-000-074 |
| Eff. date | 04-13-2021 |
| CD Diagram | CD0005 |
| Poles | 04 |
| Leads | 9#14 |
| Proprietary | False |
| Created date | 05-08-2019 |

| | |
|-------------------------------|----------------------------|
| Efficiency @ 100% Load | 91.7 % |
| Electrically Isolated Bearing | Not Electrically Isolated |
| Enclosure Modification | Severe Duty Features |
| Feedback Device | NO FEEDBACK |
| Haz Area Temp Code | T3C |
| Heater Indicator | No Heater |
| High Voltage Full Load Amps | 8.7 a |
| Insulation Class | F |
| Inverter Code | Inverter Duty |
| IP Rating | IP55 |
| KVA Code | K |
| Lifting Lugs | Standard Lifting Lugs |
| Locked Bearing Indicator | Locked Bearing |
| Max Speed | 2700 rpm |
| Motor Lead Termination | Flying Leads |
| Motor Standards | NEMA |
| Motor Type | 0738M |
| Mounting Arrangement | F1 |
| Number of Poles | 4 |
| Overall Length | 20.77 IN |
| Power Factor | 75 |
| Product Family | General Purpose |
| Pulley Face Code | C-Face |
| Rodent Screen | None |
| RoHS Status | ROHS NON-COMPLIANT |
| Service Factor | 1.00 |
| Shaft Diameter | 1.375 IN |
| Shaft Ground Indicator | No Shaft Grounding |
| Shaft Rotation | Reversible |
| Speed | 1770 rpm |
| Speed Code | Single Speed |
| Starting Method | Direct on line |
| Thermal Device - Bearing | None |
| Thermal Device - Winding | Normally Closed Thermostat |

| Vibration Sensor Indicator | No Vibration Sensor |
|-----------------------------------|----------------------------|
| Winding Thermal 1 | None |
| Winding Thermal 2 | None |

Nameplate

| NP2033XPSLEV | | | | | | | | | | |
|----------------|---------------------|------------------|-------------------|--------------|-----------------|---------------------|-------|--|--|--|
| NO. | | CC | 010A | | | | | | | |
| S/N | | TEMP CODE | T3C | | | | | | | |
| SPEC. | 07-0000-0106 | | INV.TYPE | PWM | | | | | | |
| CAT.NO. | CCPX21746T | | C HP FR | 60 | C HP TO | 90 | | | | |
| HP | 7.5//5 | | CT HZ FROM | 6 | CT HZ TO | 60 | | | | |
| VOLTS | 230/460//190/380 | | VT HZ FROM | 6 | VT HZ TO | 60 | | | | |
| AMPS | 20.2/10.1//17.4/8.7 | | MAG CUR | 10.8/5.4 | | | | | | |
| RPM | 1770//1470 | | MX RPM | 2700 | | | | | | |
| HZ | 60//50 | PH | 3 | CL | F | NOM.EFF. | 91.7 | | | |
| SER.F. | 1.00 | DES | A | SL HZ | 1 | WK2 | 0.934 | | | |
| FRAME | 213TCY | RATING | 40C AMB-CONT | | | | | | | |
| BLANK | 55C AMB @ 1.0 SF | | | | | | | | | |
| | 1.15 SF ON SINEWAVE | | | | | NEMA MG-1 PT 5,IP55 | | | | |

AC Induction Motor Performance Data

Record # 72835

Typical performance - not guaranteed values

| Winding: 07WGR561-R003 | | Type: 0738M | | Enclosure: XPFC | |
|-------------------------------|---------------------|---------------------|--|------------------------------|-------------|
| Nameplate Data | | | 460 V, 60 Hz: High Voltage Connection | | |
| Rated Output (HP) | 7.5//5 | | Full Load Torque | 22.08 LB-FT | |
| Volts | 230/460//190/380 | | Start Configuration | direct on line | |
| Full Load Amps | 20.2/10.1//17.4/8.7 | | Breakdown Torque | 81.48 LB-FT | |
| R.P.M. | 1770//1470 | | Pull-up Torque | 38.25 LB-FT | |
| Hz | 60//50 | Phase | 3 | Locked-rotor Torque | 50.29 LB-FT |
| NEMA Design Code | A | KVA Code | K | Starting Current | 82.02 A |
| Service Factor (S.F.) | 1 | | No-load Current | 5.44 A | |
| NEMA Nom. Eff. | 91.7 | Power Factor | 75 | Line-line Res. @ 25°C | 1.22 Ω |
| Rating - Duty | 40C AMB-CONT | | Temp. Rise @ Rated Load | 42°C | |
| | | | Locked-rotor Power Factor | 37.5 | |
| | | | Rotor inertia | 0.934 lb-ft ² | |

Load Characteristics 460 V, 60 Hz, 7.5 HP

| % of Rated Load | 25 | 50 | 75 | 100 | 125 | 150 |
|------------------------|-----------|-----------|-----------|------------|------------|------------|
| Power Factor | 36 | 57 | 69 | 76 | 80 | 82 |
| Efficiency | 82.1 | 88.6 | 90.3 | 90.6 | 90.2 | 89.6 |
| Speed | 1794 | 1787 | 1780 | 1773 | 1764 | 1756 |
| Line amperes | 5.93 | 6.99 | 8.43 | 10.18 | 12.2 | 14.34 |

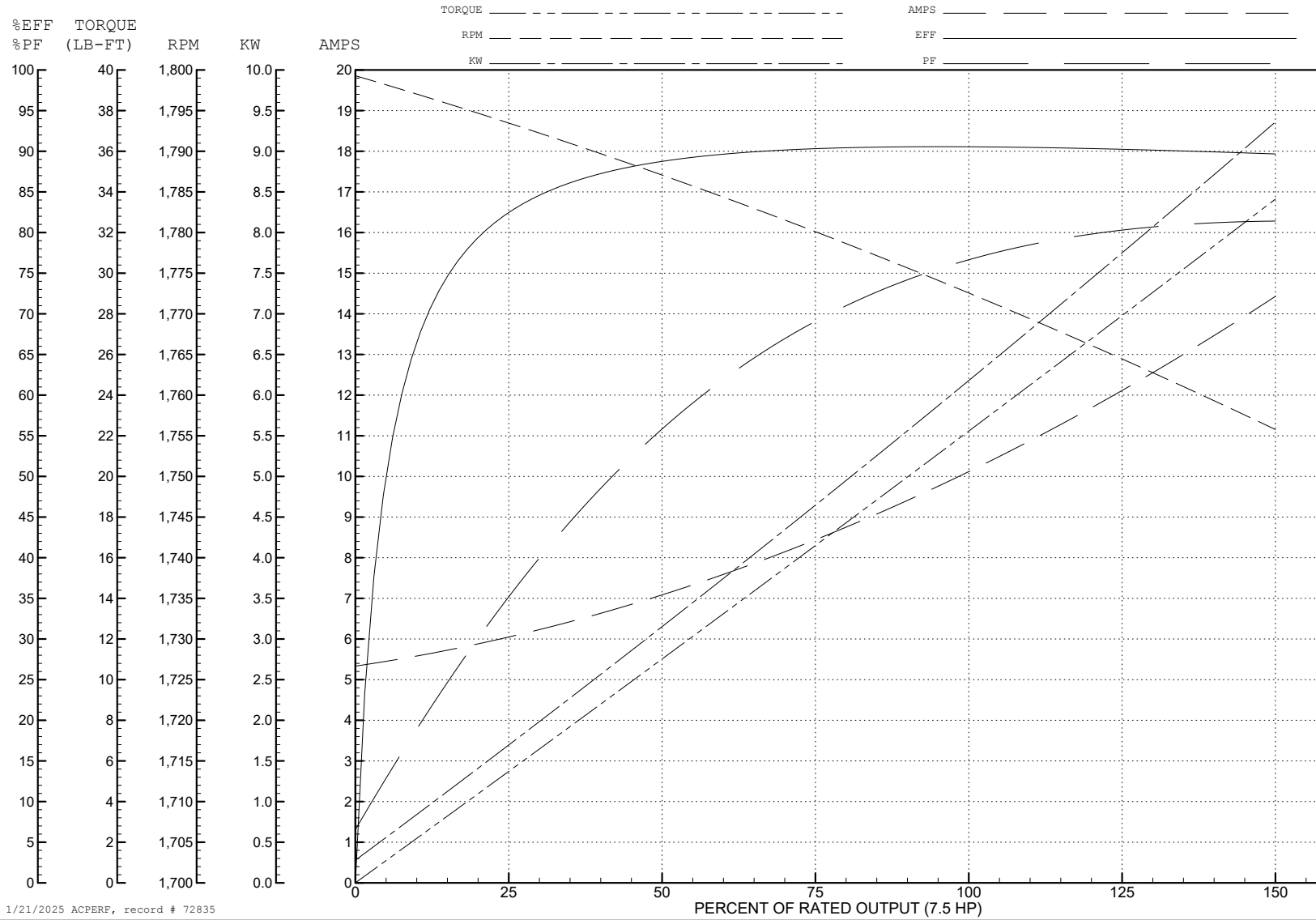
ABB Motors and Mechanical Inc.

WINDING # 07WGR561

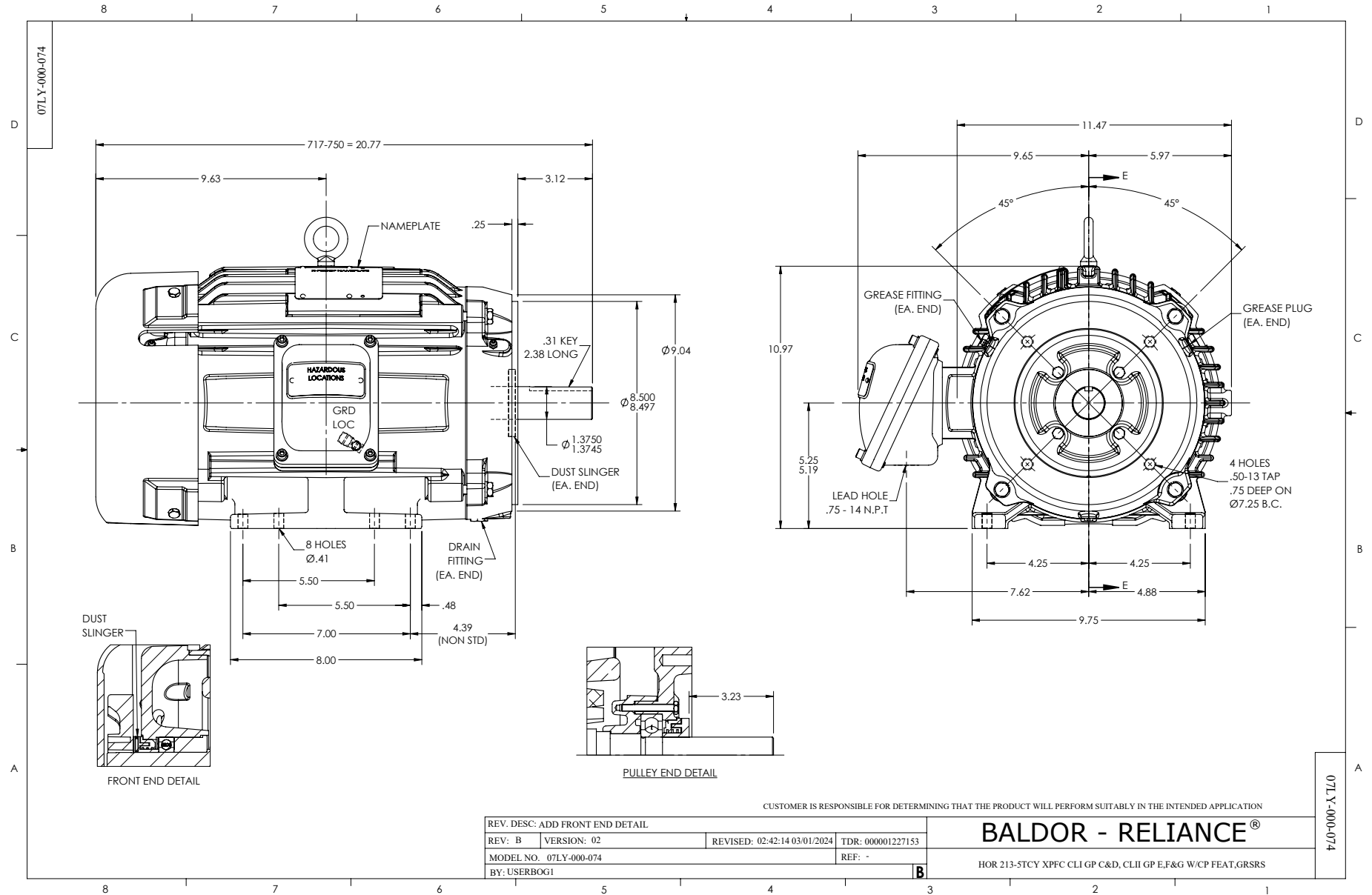
Typical performance - not guaranteed values.

7.5 HP 3 PH 60 HZ 1773 RPM 460 V 0738M

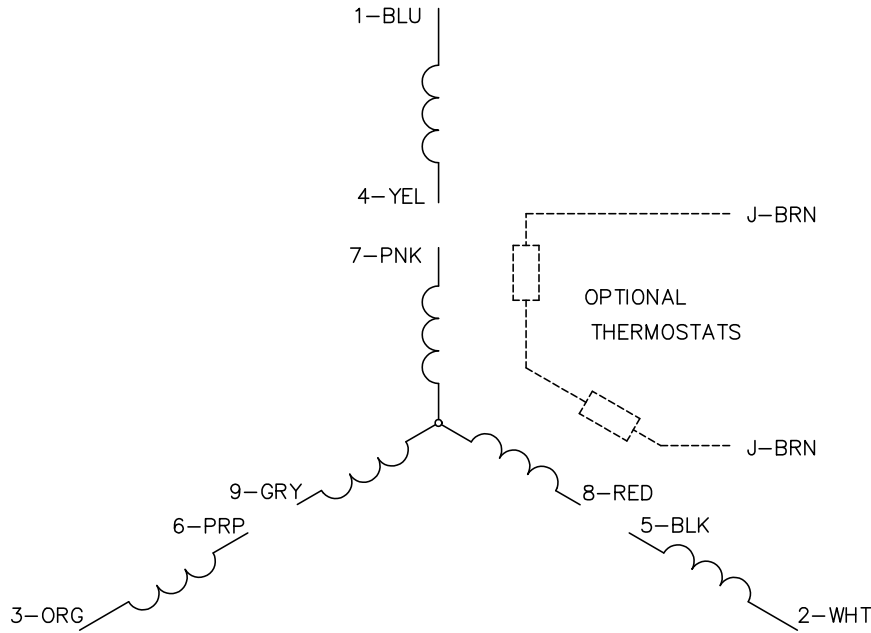
TORQUES (LB-FT): PO=81.48 PU=38.25 LR=50.29 LRA=82.02



1/21/2025 ACPERF, record # 72835



CD0005

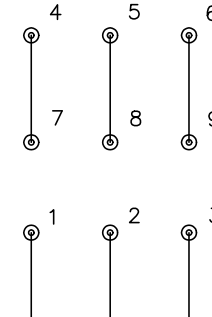


LOW VOLTAGE
(2Y)



LINE

HIGH VOLTAGE
(1Y)



LINE

NOTES:

1. INTERCHANGE ANY TWO LINE LEADS TO REVERSE ROTATION.
2. OPTIONAL THERMOSTATS ARE PROVIDED WHEN SPECIFIED.
3. ACTUAL NUMBER OF INTERNAL PARALLEL CIRCUITS MAY BE A MULTIPLE OF THOSE SHOWN ABOVE.
4. LEAD COLORS ARE OPTIONAL. LEADS MUST ALWAYS BE NUMBERED AS SHOWN.

CD0005

| | | | |
|---|---------|-------------------------|--------------|
| REV. DESC: REVISE TO SHOW OPTIONAL COLORS | | | |
| REV. LTR: E | BY: JLP | REVISED: 01/19/99 10:15 | TDR: 0171435 |
| S00000 | | FILE: AAA00005140 | MDL: - |
| | | MTL: - | |

BALDOR ELECTRIC Co.

3PH, DV, 9 LEADS